



TOWN OF BALDWIN, MAINE
OFFICE OF THE SELECTMEN
534 PEQUAWKET TRAIL, WEST BALDWIN, ME 04091



Scope of Work

Fire Alarm / Emergency Lighting / Exit Signs / Security System

1. Provide a complete fire alarm system in accordance with drawing A1.11. Exact locations of equipment to be recommended by the provider. Includes enunciator panels and monitoring services.
2. Provide emergency lighting and lighted exit signs in accordance with drawing A1.11.
3. Re-use existing equipment where possible.
4. Provide intrusion detection system with monitoring service. Re-use existing systems where possible.
5. Location of fire detection and security panels to be recommended by provider.
6. Provide equipment lists, manufacture, and system description with proposal.

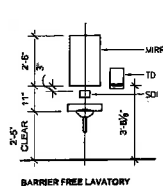


C

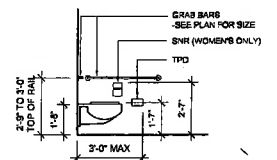
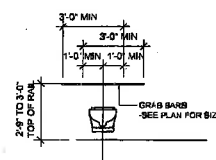
4.10.2 HEIGHT AND CLEARANCES.
LAVATORIES SHALL BE MOUNTED WITH THE RIM OR COUNTER SURFACE NO HIGHER THAN 34 IN (865 MM) ABOVE THE FINISH FLOOR. PROVIDE A CLEARANCE OF AT LEAST 29 IN (736 MM) ABOVE THE FINISH FLOOR TO THE BOTTOM OF THE APRON. KNEE AND TOE CLEARANCE SHALL COMPLY WITH FIG. 31.

4.1.3 CLEAR FLOOR SPACE.
A CLEAR FLOOR SPACE 30 IN BY 48 IN (760 MM BY 1220 MM) COMPLYING WITH 4.2.4 SHALL BE PROVIDED IN FRONT OF A LAVATORY TO ALLOW FORWARD APPROACH. SUCH CLEAR FLOOR VALVES ARE USED THE FAUCET SHALL REMAIN OPEN FOR AT LEAST 10 SECONDS.

4.10.6" MIRRORS.
MIRRORS SHALL BE MOUNTED WITH THE BOTTOM EDGE OF THE REFLECTING SURFACE NO HIGHER THAN 40 IN (1016 MM) ABOVE THE FINISH FLOOR.



BARRIER FREE LAVATORY

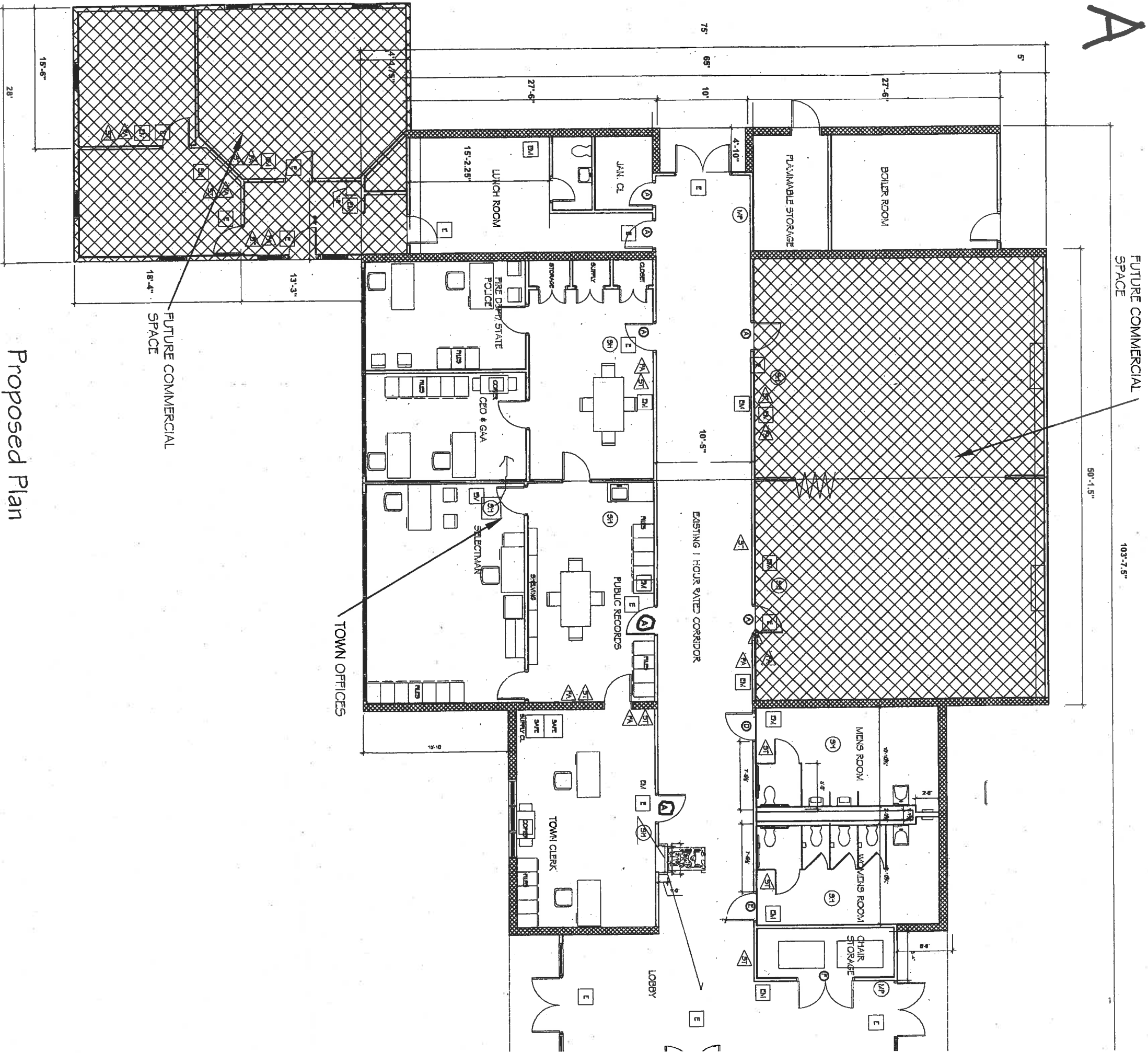
[illegible]

SAMPLE LAYOUT OF SINGLE USER TOILET ROOM

NOTE: DASHED LINES INDICATE CLEAR FLOOR SPACES PER ANSI A117.1-1986 ED.

TYPICAL ADA COMPLIANT BATH FIXTURE C

A



Proposed Plan

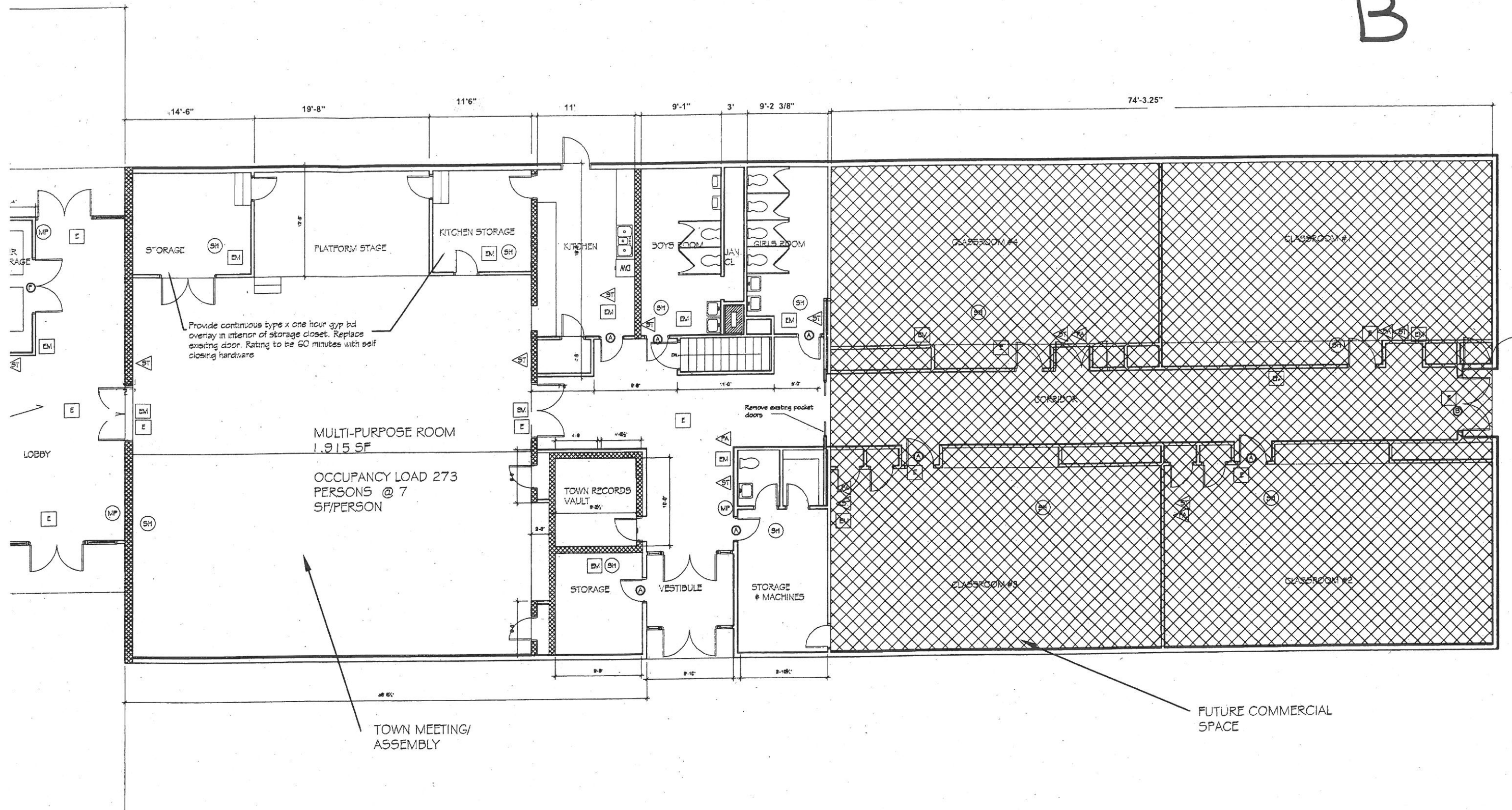
Baldwin Consolidated School
536 Pequawket Trail
W. Baldwin, Maine 04091

First Floor Plan Scale 3/32"=1'-0"
- Existing July 27, 2016
Life Safety Equipment

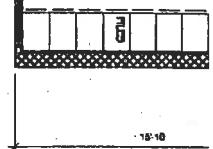
* EDITED *

A1.11

B



TOWN OFFICES



SIZE	FIRE RATING	HARDWARE	SD/ANS DOOR SELF-CLOSING DEVICE AND ADA COMPLIANT HARDWARE WITH TYPICAL LOCKING
3066	45 MINUTE	ADA ACCESSIBLE	

3066	45 MINUTE	ADA ACCESSIBLE, SELF-CLOSING	NEW
3066	45 MINUTE	ADA ACCESSIBLE, SELF-CLOSING	NEW
3066	45 MINUTE	ADA ACCESSIBLE, SELF-CLOSING	NEW

C

TOWN MEETING/
ASSEMBLY

FIRE AND EMERGENCY EQUIPMENT

Symbol Key

- MANUAL PULL FIRE ALARM
 - SMOKE AND/OR HEAT DETECTOR AS REQUIRED
 - ILLUMINATED EXIT SIGN
 - ILLUMINATED NO EXIT SIGN
 - STROBE
 - EMERGENCY LIGHTING
 - FIRE ALARM
- Re-use existing combination fire alarm and strobes where possible
 - Emergency Lighting and illuminated exit, no exit signs shall have a minimum of 90 minutes battery backup.
 - Re-use manual pull stations where possible.

ADA Bathrooms

- See drawing D1.1 for demolition for ADA bathrooms
- See drawing A1.1 for details for new ADA bathrooms
- See specifications for plumbing and product guide.

ADA Hardware, Life Safety Upgrades

- Provide ADA door hardware in accordance with above schedule.
- Provide one-hour gypboard overlay in rooms off multi-purpose room.
- Provide fire/emergency equipment in accordance with above schedule.
- Remove pocket doors in old school.