

Thermally Broken Window and Door System

MB-70



The **MB-70** is a high performing, fully integrated window and door system. The flexible design options and expansive glazing capabilities, makes the MB70 family of windows and doors an ideal choice for any new construction or retrofit project. This technologically advanced, thermally broken aluminum system promotes energy conservation through specially designed polyamide thermal break and extruded EPDM gaskets that are incorporated into the aluminum profile. MB70HI system offers excellent thermal performance with U-value of up to 0.20 with triple IG unit.

- *Flexibility of design*

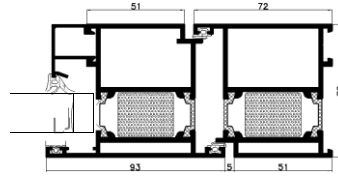
- *Thermal insulation: U-value from 0.20*

**RECOMMENDED
FOR ENERGY-EFFICIENT
CONSTRUCTIONS**

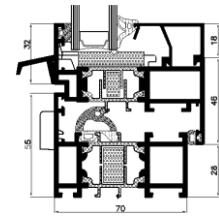


Windows, LLC
Intelligent Glazing Solutions

MB-70 / MB-70 HI



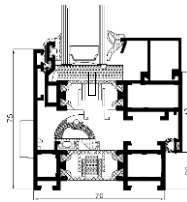
Door – cross-section MB-70 HI



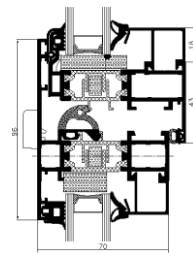
Window – cross-section MB-70 HI

The extended range of profiles allows for multitude of shapes and configurations to be manufactured on the same frame / sash platform. Inward opening sash allows for easy cleaning and maintenance of the window, and interior compression glazed frames make glass replacement fast and affordable. MB70 and MB70HI is the ideal choice for multifamily, hospitality and residential projects. The system can be utilized for new construction or retrofit projects.

MB-70US / MB-70US HI



Operable window – cross-section

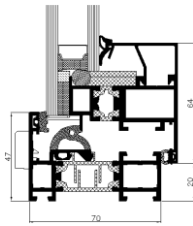


Operable to fix window – cross-section

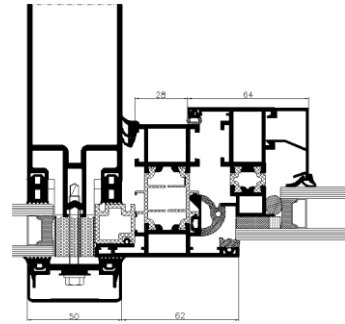
The concealed sash design creates clean and seamless transitions between multitudes of window configurations. It is ideal for a larger glass wall designs or it can be used as a storefront systems. This system is available in both regular thermal and HI (high insulation) versions.

WINDOW DIAGRAMS	SECTION A and B	U-Value		
		Glass pane with swiss spacer Ultra frame		
		TRIPLE GLASS		DUAL GLASS
		U-Value	U-Value	U-Value
	<p>MB-70</p> <p>K518101X</p> <p>K518101X + K518111X</p>	0.20	0.20	0.23
		0.20	0.20	0.25
	<p>MB-70Hi</p> <p>K518101X + K518112X</p> <p>K518102X + K518112X</p>	0.20	0.20	0.25
		0.20	0.20	0.25

MB-70SG



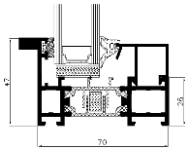
Operable window – cross-section



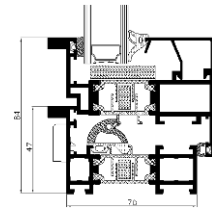
Operable window
in a curtain wall – cross-section

The frameless exterior sash of MB70SG allows it to easily intergrade into our curtain wall system. It resembles regular concealed sash, but since it utilizes 1-7/8" frame it is therefore narrower than our MB-70US window and offers slimmer and lighter look.

MB-70 INDUSTRIAL / MB-70 INDUSTRIAL HI



Fixed window – cross-section



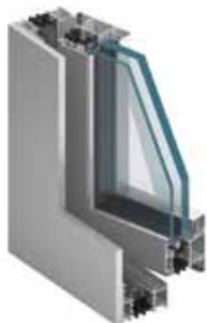
opening window – cross-section

Ideal for replacement of old narrow framed windows or for new construction MB70 Industrial system is more affordable and can fit into any budget, while maintaining stylish look and providing all the benefits of modern aluminum technology. Combining attractive design options with long term sustainability, the system features enhanced thermal insulation properties to ensure proper energy conservation.

MB-70 Casement



MB-70 RC4



MB-70 Pivot



MB-70CW / MB-70CW HI



The MB-70 system can be used for fabrication of inswing and outswing windows and doors. Possible configurations include: inswing and outswing casement, pivot, fixed, tilt and turn, awning and hopper windows. Door configurations include: inswing, outswing, tilt and slide, lift and slide and bi-fold. All configurations are available in MB70 and MB70HI versions. For more information contact your sales representative or visit our website at www.ecowindows.us.

FEATURES AND BENEFITS

- Windows available as dual action tilt and turn or fixed
- Single or double doors that open in or out
- High security multipoint locking system
- Remote entry or manual keying options
- Large multi light configurations available
- Concealed sash option
- Narrow sideline sash and frame
- Unlimited color and finish options
- Wood grain laminations available
- Glazing up to 2-3/8"
- Excellent sound blocking properties STC up to 44

TECHNICAL SPECIFICATION	MB-70 MB-70 HI	MB-70US MB-70US HI	MB-70 INDUSTRIAL MB-70 INDUSTRIAL HI	MB-70SG	MB-70CW MB-70CW HI
Depth of frame (door / window)	2-3/4" / 2-3/4"	2-3/4"			
Depth of leaf (door / window)	2-3/4" / 3-1/8"	3-1/8"			
Glazing rang (fixed window and door / opening window)	9/16" – 2" / 7/8" – 2-3/8"	3/8" – 1-7/8" / 11/16" – 2-1/8"	9/16" – 2" / 7/8" – 2-3/8"	11/16 – 2-1/8"	3/8" – 1-7/8" / 11/16" – 2-1/8"
MIN VISIBLE T-MULLION WIDTH					
Frame (door / window)	2" / 1-7/8"	2-15/16"	1/7/8"	1/7/8"	3-1/16"
Sash (door / window)	2-13/16" / 1-1/4"	–	1-1/4"	–	1-3/8"
SIZE AND WEIGHT LIMITATIONS					
Maximum size of window (WxH)	W up to 64" H up to 96"	W up to 56" H up to 96"	–	W up to 80" H up to 96"	–
Maximum size of door (WxH)	W up to 52" H upto 96"	–	–	–	–
Max weight (door / window)	265lb / 285lb	285lb	–	285lb	–
WINDOW TYPES					
Configurations	Fixed, Casement Hopper, Pivot Tilt & Turn Tilt & Slide Lift & Side Inswing & Outswing Doors	Fixed, Casement Hopper, Pivot Tilt & Turn	Fixed, Casement Hopper Tilt & Turn	Fixed, Casement Hopper Tilt & Turn	Fixed, Casement Hopper Tilt & Turn

PERFORMANCE	MB-70 MB-70 HI	MB-70US MB-70US HI	MB-70 INDUSTRIAL MB-70 INDUSTRIAL HI	MB-70SG	MB-70CW MB-70CW HI
Air Infiltration	class 4, EN 1026:2001; EN 12207:2001				–
Wind load resistance	to class C5, EN 12211:2001; EN 12210:2001			class C5, EN 12211:2001; EN 12210:2001	
Water tightness	to class E1200 (25 psf)			E750 (15 psf)	



Windows, LLC
Intelligent Glazing Solutions

ECO Windows, LLC
Bus: 775-636-8138
Fax: 775-636-8391
www.ecowindows.us
info@ecowds.com