

Quality
without
compromise

AVION Travel Coaches



Quality Just how would you determine quality in a thoroughbred? Or a masterwork of art? A sable, or a symphony? No need to. Almost at a glance, you will recognize it. Instinctively. Intuitively. The same way you feel that instant awareness of quality when you view a luxurious limousine in the salon window or on the avenue.

And how would you assess the superior quality of an Avion? You'll recognize it here, too, the moment your eyes rest on this magnificent luxury Travel Coach. At first glance, your quality-consciousness comes alive.

There's a certain suppressed excitement about the sweeping aerodynamic design. And a pleasing sensation from the distinctive harmony of the Avion as a whole.

But move in. Closer. Now the qualities of fine craftsmanship come on strong as you examine every detail, every feature. Inside and out, there's a certain air of elegance. A rare blend of beauty and utility. All expressing the Good Life for its future owner. Comfort. Ease. Spaciousness. Carefree travel living. Fun! Promise of pleasure times ahead, year after year. Perhaps for you and yours. And with it all, that well-deserved pride of ownership that's yours when you own an Avion.

What makes Avion the critics' choice — the Quality Standard of the Industry? You'll find the proven, practical answers on these pages. And at your Avion Dealer's. When you inspect the Avion for yourself.

Value The watchword. The ultimate measure of the true worth of your investment in a travel trailer. Simply stated, Value is what-you-will-get-for-your-money.

Which brand offers the most value? Which should we buy? Only through direct and detailed product comparison can these questions be answered. And Avion openly invites such comparison.

But values vary. With people as well as with products. Some purchasers will settle for less. Some products are built to lower quality standards than others within a common price category.

Some manufacturers sacrifice quality in hidden places in order to feature quality out in the open where it shows to best sales advantage — and profit.

Thus, without careful complete comparison, the truly value-conscious buyer may be misled by such on-the-surface sales strategy. It may contribute to imposing sales figures but not to lasting owner satisfaction. For that comes only from deep-down quality and value, through and through. The kind Avion builds into its luxury Travel Coaches.

Examine the Avion carefully. Critically. Completely. Study the many sound reasons for its outstanding performance, towing ease, long life. Its special way with women. Solid value will stand out for you in every aspect of this superb recreational vehicle. Value which will be with you for thousands of miles, worry-free nights and pleasure-filled days.



Compare all of Avion's features with any other travel coach, bar none. The watchword, VALUE, will take on a great new meaning for you.



"Life is easier and more fun when you're Avioning."

(Words-eye wisdom from a wife)

How true! You can take it from us, because we've discovered it after years of trailer travel experience. Before we stepped-up to our Avion we owned various other trailers. But it took our first trip in an Avion luxury coach to show us what we'd really been missing!

We had thought we knew what trailer travel was all about. Much of my own knowledge came from past experiences and problems on the road that made me sometimes wonder why we ever left home!

For Bob, my husband, *any* trailer trip was get-away fun. Away from *his* work and worries. Away from *his* routines. Roughing-it was *his* idea of relaxation and freedom. But not necessarily *mine!* Because much of his travel freedom still bound *me* to the same old routine household chores I thought I'd left back home. While *he* was free to fish and hunt and hike and roam to his heart's content.

Though I didn't for the world want to spoil *his* fun — I often thought, "Where's *my* fun? Where's all that joie-de-vivre that's supposed to go along with trailer travel togetherness?"

I think Bob sensed my feelings — and at times, felt the same way himself (as he later confessed). Then suddenly it all changed. By chance, we stopped in on Joe and Ruth, old friends who had bought a new aluminum Avion. A real beauty. A 28-foot "Travelcader" model, they called it. Having returned from their "maiden voyage" only days before, they were eager to go again — and to share their excitement with us. So we took a trip together. "Just to show you what *Avioning* is like," they challenged.

Next day at dawn we left for the mountains. It was a beautiful but blustery fall day with gusty cross winds — with Bob at the wheel for an Avion tow-test. "Man, what a difference! Complete control! Rock-steady-as-she-goes," he exclaimed.





Then Joe explained it. "The difference is in Avion's aerodynamic, jet-like design. Lets the winds slip on by, slick as silk. And there's that great, stabilizing Smooth-Glide suspension system underneath, too." This began an enthusiastic discourse on Avion's design and engineering advantages which we left strictly to the men. While I listened to "all the wonderful ways Avion has wooed women away from home", according to Ruth, "with features that add up to new feminine freedom and travel fun."

While we fixed our first Avion meal, I was amazed at how convenient, how easy and how much fun it was to command Ruth's Avion Hostess Center. Everything at hand. Scads of mica-covered table top space. Storage cabinets for everything. Hot-and-cold running water from a smart swing faucet. A 4-burner hooded gas range with a power vent fan — and a window and light in the oven! Bi-fold range top, too!

After a petite gourmet dinner in the Avion lounge and a quick-and-easy clean up of table and dishes, we toured the entire coach, stem to stern. Later, as we sat listening to dreamy taped music from the built-in stereo speakers, I looked again at all the lovely decor 'round about me.

The soft glow of valanced lighting. The thick shag wall-to-wall carpeting. The satin lustre of fine cabinetwork. Those richly lined wrap-around draperies, and choice upholstery materials. The subtly-patterned vinyl-covered walls. I looked forward to the luxury of a night-time bath in the utterly charming bathroom. And those oh-so-comfortable inner spring beds waiting for us! All in such perfect harmony and elegance. A woman's travel dream come true!

No wonder Ruth had raved about her luxury playhouse-on-wheels! How different from our own trailer. And what a departure from the cramped, typically all-male designed trailer of our own. "Here is real travel fun and freedom for both of us," I exclaimed to Bob.

And every day of the trip brought exciting new Avion revelations. We had only to return to our own trailer, take one long look at it — and at each other. Then, out-of-the-blue, Bob said, "Now I know the difference between a travel trailer and a luxury travel coach. And that difference is Avion!"

Here was my cue. So I said, "OK — let's buy an Avion!" And we did! And that's how we discovered how much easier and more fun life is when you're Avioning. Try it!





Quality and value are strikingly expressed in Avion's famous hand-crafted cabinetry. A first glance reveals the complete harmony of design, beauty of wood tones and fine finishes. A second look and you'll see the superiority, the solid, built-in character of these fine cabinets when compared with ready-made types by others.

For example, examine a typical Avion cabinet. Doors are of genuine birch veneer, mounted on full-dimension wood framework. Each piece requires a patient three-coat finishing process. After sanding, the wood is stained and then sealed. Next, more hand sanding is done before the final varnish coat is applied.

Check the edges of the doors, note the absence of exposed layers of laminated plywood. Avion doesn't cover them up with cheap plastic molding, either. Instead, a special wood grain tape is heat sealed to the edges. It matches the door face to perfection.

When installed in the coach, cabinet doors are enhanced by quality hardware at every hinge, latch and handle. You'll find no exposed screw heads or staples. And except for the mica counter tops, no synthetic materials or imitation woods. No pre-fab, assembly-line appearance either. All Avion woods are genuine. All are hand-finished the way old world craftsmen used to do it. The way others wished they could.

While you're comparing Avion with other makes in mind, just reach in and run your hand over any of Avion's shelves. No raw roughness or splinters here. Because all are sanded, stained and sealed for that more than skin-deep beauty so characteristic of Avion Quality.

But there's much more Avion cabinetry to explore — and compare with others. So now let's look above, at those overhead cupboard doors that swing up. When open, they stay entirely out of the way while you're stowing articles on the shelves. When closed, they occupy no valuable inner storage space. While comparing, also take note of the two shelves — instead of only one. And with ample space between.

Step back from the hostess center (kitchen) and look around. Take in all the wonderful storage spaces that are yours in an Avion. Doors and drawers at every hand. Really roomy, all-wood easy-gliding drawers — not plastic bins or trays.

And sturdy wood wardrobe doors, hinged for smooth, out-of-the-way opening.



cabinetry. Criterion of Avion Quality.

Many are mounted with full-length brass piano hinges. Look behind pantry doors that reveal wide openings for easy storage and removal of out-size pots and pans and odd-size articles. Even pull-out adjustable depth pantry shelves, too. And big pantry cupboard space that scores a special hit with the host and hostess.

Now look down. Open the under-sink doors. Surprised at all that usable space? No wonder! It's unencumbered by bulky plumbing, appliance equipment or clutter. And to top-off the hostess center there's far more counter space by comparison. Plus a matching sink cover board for still more counter space.

A further look about will reveal other typical Avion touches. Such as the handy cutting board in the pantry — a standard feature. Or the pull-out towel rack by the range. Avion developed every detail to give women all the hostess center convenience and easy accessibility possible. So typical of the entire Avion luxury Travel Coach planning.

Up front you'll find two more overhead cabinets flanking the instrument signal center over the couch. Here your books, binoculars, belongings and bric-a-brac will find convenient quarters. Again note the custom elegance of the cabinetry. Lift that front cushion for a peek at the generous hideaway storage space underneath.

Then step into the bedroom area and behold still more storage capacity. Avion's various clothes closets are full length for hanging your sports and travel wear or your finery, wrinkle free. Overhead along either side are deep cabinets with those same beautiful, genuine birch doors that lift up for easy access.

And under the beds are capacious, dresser-type storage drawers. Alongside these are big doors that hinge down and expose a cavernous storage space, also accessible through a convenient locked hatch door outside the Avion. This wide, pass-through space is ideal for extra jacks, cords, hoses and camping equipment ordinarily hard to store. (Other outside hatches house water hose, 110 volt electric cord).

And finally there's Avion's amazing bathroom storage space, all enclosed in handsome cabinetry. The mirrored medicine chest over the vanity cabinet lavatory. The spacious linen closet. And another full-length wardrobe. All in the bathroom.

Compare. Again you'll be delighted over how cleverly every nook and corner space is put to use. Real "space-ship" efficiency for more fun and freedom while you're Avioning.







Luxury Unlimited in Travel Living

AVION *La Grande*

La Grande by Avion ... Elegance without equal.

Hail the style sensation of all luxury travel coaches! The great new Avion *La Grande*.

Within Avion's famed and familiar aerodynamic aluminum exterior, style experts have fashioned this exciting new symbol of excellence and elegance. For *La Grande* will surround you with an aura of French Provincial luxury and chic. And a certain fun-to-live-in-it feeling you've never before experienced in any other brand of travel coach.

In brief, *La Grande* designers have far out-classed the field. They have created an advanced concept of travel-living. A refreshing decor that marks a new milestone in Avion leadership. Yet everything about *La Grande* is totally practical. Little wonder that, with women, it's love-at-first-look! And accompanying their spontaneous oh-hs and ah-hs you'll hear overtones of male approval. And from both, renewed enthusiasm for trailer travel — now à *La Grande*.

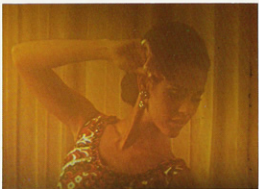
Basically, *La Grande* is an ultra-refinement of the standard Avion luxury Coach with its special Smooth-Glide suspension, deep rugged steel frame, satin-anodized and riveted aluminum body, tinted Plexiglas safety windows and weatheright Thermo-X sprayed-in insulation throughout.

Also, *La Grande* features the same superior quality equipment and cabinetry that characterize the entire line of Avion Coaches.

But beyond the basic Avion, a magical new interior transformation has taken place, to make *La Grande* the fabulous *petit palais royale* that it is. The charm of French Provincial decor and accoutrements. The French flair in the door panel trim. The grace of a finely curved and carved table leg. The accents of complimentary hardware. That extra depth in the richly-piled, wall-to-wall shag carpeting throughout — including the beautifully appointed, luxurious bathroom.

And the stylish window decor. Pleated outer draperies, when opened, reveal a complete set of sheer underdraperies at each window. No detail has been overlooked. Even the bathroom shower curtain hangs from rosette-type hooks.

La Grande's overall interior color scheme is rich, restful, relaxing. The elegant front sofa, for example, is skirted with matching upholstery material. Overhead,



the cut glass type globe of the center ceiling light glows within its antique brass trim.

The beauty of the bouclair-like sleeping area is reflected in mirrored walls. The headboard walls are totally covered with gold-veined decorator mirrors, creating an elusive air of added spaciousness and lavish charm. Women simply love it! And men frankly admire all of *La Grande's* liveability and good taste.

Avion's old-world craftsmanship in cabinetry is already famous. Now it's further enhanced by decorative embellishments and utilitarian extras à *La Grande*. Behind the richly hand-finished cabinet doors are fun features and conveniences to delight any proud hostess.

Thoughtful touches such as a spice rack inside the pantry door. A trash bag holder under the sink (the sink cover panel incorporates a maple chopping block). An aromatic cedar-lined closet is optional. And scores of other delightful highlights stand ready to reveal themselves on further inspection of *La Grande*. As with all Avions there are a number of extra cabinet options. All woodwork is genuine and is available in a choice of avocado or walnut finish.

La Grande interiors are featured in the 31-foot Imperial, 28-foot Travelcader and 25-foot Voyageur Avions.

The Avion *La Grande* was conceived in the unhurried spirit of the illustrious custom automobile coach designers of the past. To make traveling a rich and joyful experience. To liberate both the man and woman traveler from the sometimes humdrum conventional trailering. To establish an unrivaled tradition of *Elegance without Equal*.

Years ago, Rolls Royce of England introduced its legendary Silver Ghost model, still remembered as an epic motor car. Ownership was an unforgettable experience for those fortunate enough to possess one. *La Grande* by Avion will, we believe, become a legend in our own time. It will instill a well-deserved pride of ownership above all others.

Here is the ultimate in Travel Coaches. Luxury Unlimited. Elegance without Equal. The new *La Grande* by Avion. Tour a *La Grande* at your Avion dealer's.



1971 Avion *La Grande* Specifications

Exclusive Features

Avion La Grande*

Elegance without equal

*Identified by the Avion escutcheon on each external side ribband.

Exclusive Appointments

(In addition to features listed in specifications, at left)

- * PROVINCIAL CABINET TRIM on all doors and drawers.
- * DELUXE PROVINCIAL CABINET HARDWARE.
- * PROVINCIAL CARVED TABLE LEG on extension table.
- * SHEER UNDERDRAPERIES on each window. (In addition to special pleated overdraperies).
- * SKIRTED SOFA BED
- * Extra Deep Pile Polyester SHAG CARPETING wall-to-wall including bathroom.
- * CUT GLASS TYPE CEILING LIGHT in living room.
- * BUILT-IN WASTEBASKET under the sink.
- * WOODEN SPICE RACK inside pantry door.
- * MAPLE CHOPPING BLOCK on underside of mica-top sink cover.
- * DELUXE SHOWER CURTAIN and ball-trimmed window valance.
- * GOLD-VEINED DECORATOR MIRRORS wall-to-wall across bed-head walls of sleeping area.

BASIC CONSTRUCTION

- Riveted aluminum interior and exterior construction
- Anodized aluminum exterior
- Triple channel heavy duty 5" tubular steel frame (6" on 31 ft.)
- Smooth-Glide suspension by MOR/ryde with shock absorbers
- Three tandem axle coach lengths: 25 ft., 28 ft., 31 ft.
- Steel rear bumper for storing waste hose and adapter
- Sprayed-in Thermo-X urethane foam insulation in ceiling and walls
- Thermo-X urethane foam sandwich panel sub-floor
- Vinyl foam seam sealant tape
- Astrovision safety windows of tinted Plexiglas® I.C.C. approved and certified
- Electric brakes, all wheels
- Deluxe full wheel covers
- Tires: White solid wall Firestone H78-15; Deluxe Champion Fiberglass Run-Flat on 31 ft.; Bireta Street on 25 ft. and 28 ft.
- Code-approved wiring, plumbing and heating systems
- Wiring and bracing for roof-mounted air conditioner

EXTERIOR CONVENIENCES

- Double 30 lb. aluminum butane tanks
- Roof window awning
- Frosted Plexiglas® rear bath window
- Awning rail
- Full size aluminum swing out screen door
- Disappearing door step
- 25-foot heavy-duty 110-V cord with storage compartment
- Recessed amber porch entrance light
- Telescoping radio antenna
- Backup lights
- Weatherproof double patio outlet
- Outside trunk door
- Exterior water hose storage compartment with concealed water hose connection
- Automatic switch-over regulator
- Automatic Ignition quick recovery gas/electric water heater
- Exterior deluxe trim

INTERIOR CONVENIENCES

- Screens in all windows
- Onmpower electric system with 12-volt batteries, (two 80 amp. in 28 ft. and 31 ft.; two 65 amp. in 25 ft.) interior battery case, 110-volt converter-charger and fuse panel
- High density 5" superfoam deluxe cushions, buttoned w/rolled fronts
- Bay View front window
- Translucent ceiling vents
- Two ceiling fans
- Two-speed ceiling fan in bath
- Cutting board with built-in storage rack
- Pull-out towel rack
- Crystal clear mirrors with ground edges
- Divider curtain between living and bedroom area
- Instrument signal center
- Wrap-around living room draperies, lined
- Choice of hand-crafted woodwork in walnut or avocado finishes
- Cornice boards with recessed lighting
- Mica gallely worktops
- High intensity interior lighting system with bayonet type bulbs
- Built-eye reading lights
- Choice of twin or double beds or side gauche
- Choice of dining arrangements — front sofa bed with extension table or on rear door with extension table
- Choice of color-coordinated interiors

- Treated, soil-resistant upholstery
- Seamless vinyl cushion floor covering
- Washable vinyl interior wall covering
- Decorative window shades in kitchen and bathroom
- Double shelf locker cabinets
- Bedroom wall comfort pads, vinyl upholstered
- Quilted bedspreads
- Sealy Posturepedic mattress(es) on permanent bed(s)
- Marine track drapery rods
- Clothes rod in shower

APPLIANCES & COMFORT FEATURES

- Suburban Dyna-Trail forced air gas furnace with fan, 30,000 BTU in 28 ft. and 31 ft.; 22,000 BTU in 25 ft.; thermostat controlled; ducted heat in living, bedroom and bathroom areas
- Stainless steel double sink with sink cover
- Water system includes 35-gallon tank with exterior inlet and automatic 12-volt pump
- Television jack with shielded lead-in wire installed in walls
- Complete bath with waste holding tank with shut-off valve, 2-speed ceiling fan, Marine type toilet, laundry, combination shower/bath, linen closet, clothes hamper, medicine chest with sliding mirror doors, shower curtain
- 7 cu. ft. combination gas/electric refrigerator with separate freezer compartment in 28 ft. and 31 ft., 6 cu. ft. in 25 ft.
- Built-in 4 burner Magic Chef gas range with tinted window oven door interior light, and bi-fold top
- Range hood with filter, 12-volt power fan and light
- Moen single handle swing faucet with swivel spray aerator

OPTIONS

- Spare tire and carrier
- Extra wheel for spare
- Wheel cover for spare
- Spare tire cover with lock
- Firestone H78-15 Deluxe Champion tires, Fiberglass Sup-R-belt (standard in 31 ft.)
- Auxiliary gas light
- Directional TV antenna, UHF and VHF
- Roof mounted air conditioner, 110-volt, 10,000 BTU and 12,000 BTU (Recommended for any trailer over 26 ft.)
- TV antenna (UHF & VHF) with swivel shelf
- Music center: Stereo tape player, one tape, and AM and FM radio cartridges
- Extra large front dinette with 57" cushions in 28 ft. and 31 ft. models
- 7 cu. ft. combination gas/electric refrigerator with separate freezer compartment in 25 ft.
- Gas light
- Hydraulic frame jacks
- Power jack in "A" frame, 12-volt
- Two 80 ampere batteries (standard in 28' and 31')
- Storm windows
- Slumber bags
- Gas bottle gauges
- Water purifier
- Additional 12-volt outlets
- Built-in cabinet options:
 - Shirt hanging closet
 - Entertainment bar cabinet
 - Two drawer utility cabinet
 - Living room corner cabinet
 - Cedar-lined wardrobe
 - Provincial folding chair

Avion Coach Corporation reserves the right to make changes at any time, without notice, in prices, color, materials, equipment, specifications and models, and also to discontinue models or make improvements without incorporating such changes in previous models.

AVION®

COACH CORPORATION, 1300 EAST EMPIRE AVENUE,
BENTON HARBOR, MICHIGAN

Astrovision windows mean more comfort for you... added protection and beauty for your Avion.

Windows are windows to most people. Except Avion owners. Because Astrovision windows add a whole new dimension of livability, safety and good looks to every Avion. Made of tinted "Plexiglas" acrylic plastic, the same material used in jet aircraft and helicopters, they have amazing impact strength and flexing properties. Avion was the first to use it in the industry... and still is the only manufacturer to use Plexiglas so extensively in all its windows.

To start with, Astrovision windows have a bronze tint that shields sky glare. At the same time they have inherent solar control that cuts heat gain by as much as 50%. So when others are sweltering in their trailers, you stay cooler, more comfortable in your Avion.

You also enjoy an unexpected element of privacy not found with clear glass windows. From the inside looking out, you get a clear unobstructed view of your surroundings. On the other hand, for those looking in from the outside, the bronze tint shields their view almost like a sheer window shade.

Astrovision windows are many times stronger than safety glass. And they are shatterproof. They have a high resistance to impact from flying objects and other road hazards. Naturally, they comply with the requirements of the USASI 26.1 safety standard.

They weigh less than other travel trailer windows, too. Which helps keep weight at the floor level for easier, better balanced towing.

Then there's the smart high-styled appearance. The bronze tinted Plexiglas framed in black anodized aluminum is a pleasing contrast to the satiny anodized aluminum skin. There's no mistaking your Avion on the road.

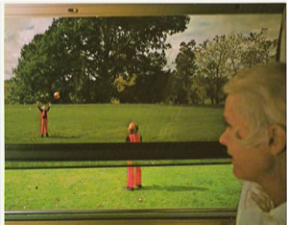
You'll notice too, how the shape of these windows follows Avion monocoque design. That term simply means the sides of your Avion, when viewed from the front and rear, look like parentheses (). Side winds roll off your Avion without affecting steering. Even the big, wide Bay View front window sweeps around the aerodynamic corners.

Yes, Astrovision safety windows are just one more exclusive feature you get only in an Avion.



When you're not looking at each other your most exciting sights will be those seen through Avion's Bay View front window. The broad, tinted expanse lets you enjoy all the beauty you came to see... in the luxury of your Avion.

Tinted Plexiglas adds a marvelous difference to Avion windows. Note the picture at the right. See how the bronze tinted windows temper the sun's glare. Reduce heat gain, too. Also gives you more visual privacy.



For lifetime beauty and low maintenance Avion's



More contoured end-shell segments mean less stretch-forming, more rigidity, strength and beauty. Another Avion extra effort to give you the best.

Avion's anodized aluminum combines structural strength and satin-like, non-glare surface. For easy maintenance, simply wash it as you do your car.



anodized aluminum exterior is more than skin deep.

When you first view an Avion you see aluminum, round corners and rivets. Looks like an airplane fuselage. The construction is much the same—intentionally.

Obviously, wind resistance is a hindrance to any moving object, travel trailers as well as jet planes. That's why we round the corners, to reduce resistance. To engineers it's aerodynamics. To you it means much easier towing and more gas mileage.

Weight is another towing factor. And aluminum is the most practical lightweight metal known to man. It's nearly half the weight of wood. Jets use it; Avion uses it. With Avion's combination of tough, lightweight aluminum and aerodynamic styling, your tow car doesn't work as hard. Makes sense, doesn't it?

Rivets are key parts of Avion's jet-age aluminum construction. Look at them. See how evenly spaced, how perfectly aligned they are? Compare this precise workmanship to other riveted aluminum trailers. If you look closely, it's easy to see there's really no comparison. It's all part of Avion quality — unmatched in the industry.

In a 28-foot Avion Travelcader for instance, there are 3,900 rivets. We believe a 28-foot Avion needs 3,900 rivets, and we won't skimp just to save a few hours of labor and a couple of pounds of rivets. Again this reflects the Avion quality philosophy of producing the *finest* for your safety, peace of mind, pride of ownership.

And here's another comparison detail worth examining. Other bullet-shaped trailers have contoured end shells similar to Avion. Now count the *number* of segments in the end shells. For extra strength and rigidity, Avion has 12 segments plus a center panel. Each segment is pre-drilled for rivets with military uniformity. Other trailer makers, with fewer than 12 segments must stretch-form their aluminum-segments over many more compound curved surfaces. When aluminum is formed in this way, it's like stretching a balloon over your finger. At the point of strain, it is weakened. By using more end-shell segments, Avion aluminum is not subjected to such strain. So it is stronger.

Even Avion's aluminum is *different* from most others. It's *anodized*. Just as tempering makes steel stronger, anodizing makes aluminum harder, tougher. You benefit because your Avion exterior shrugs off corrosion and stains. It resists scratches, dents and abrasion better than ordinary aluminum. You can drive down brushy trails without fear of marring your beautiful Avion.

Only aluminum of extremely high purity will "take" anodizing properly. So Avion starts with a higher priced aluminum, called 5005 by metallurgists.

The alloy content of Avion aluminum substitutes magnesium and manganese for copper. It's the same high grade alloy used in the finest aluminum yachts costing tens of thousands of dollars.

To anodize Avion's aluminum, the metal is passed through a series of electrolytic cells. The current and temperature are carefully controlled to achieve an oxide coating of specific thickness and properties.

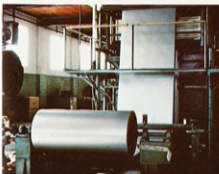
All metal, even aluminum, oxidizes after being exposed to the elements. Anodizing is a method of *controlled oxidation* so that a uniform oxide coating is achieved. The process adds a mil or two of thickness to the 30 thousandths of an inch metal. But it also impregnates the aluminum, and becomes a part of it. The anodized surface is then sealed to give it permanent coloration. Scientists compare the hardness of the surface to that of a ruby. So your Avion has tough, gem-like finish with visible depth you can almost see into. Yet its satin-like anodized finish is non-reflective, giving you coach an additional highway safety advantage.

What about the finish on other bullet-shaped trailers? All have surface coatings, which are attractive when new. But in time, these coatings have been known to scratch, peel and wear off. The owner must then polish and buff the metal to regain its original luster. Not so with an anodized Avion.

The pre-oxidized exterior retains its like-new beauty after years of outdoor exposure. For maintenance, simply wash it as you do your car.

To fortify the important lightweight factor, the anodized aluminum is then riveted to strong all-aluminum ribs and channels. No wood is used in the superstructure. And here's where Avion goes another step beyond the others: Wherever aluminum is riveted to aluminum ribs, the metals are separated by a vinyl foam tape. This tape is 1/16 of an inch thick and serves as a seal against road dust, moisture and temperature transference — one more Avion quality feature.

Now add up all of these Avion *plus* benefits. Classic aerodynamic styling. Costlier aluminum alloy. The magic of anodizing. Skillful riveting. It's easy to understand why your Avion has the finest, toughest, most beautiful exterior skin in the travel trailer world.

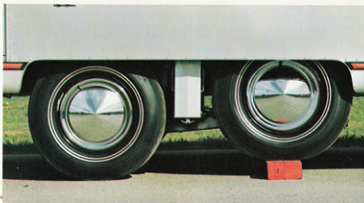


Avion aluminum being anodized in giant electrolytic tanks. This process is time-consuming and costly, but well worth the advantages to Avion owners.

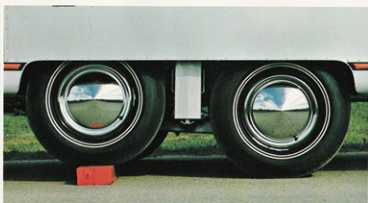
Here's a close look at the non-reflective characteristics of Avion's anodizing. Compare to the ordinary type of travel trailer aluminum.



Smooth-glide Suspension means just that... easier towing, safer belongings, longer tire life.



Smooth-Glide Suspension... standard on all Avions. Here you can see how it is in full control at all times. As your Avion travels across a bump or a rut, the front wheels go up while the rear wheels maintain its ride level.



This absorbing action of Smooth-Glide continues as the rear wheels rise over the jolt. Equilibrium is governed by the front wheels which have now traveled past the bump. There is no bouncing, no-frame twisting with Smooth-Glide.

How would you like to tow a travel coach over all kinds of rough, tough road conditions without fear or worry? A coach that responds smoothly to sudden stops without jerks, jolts or jumps? A coach that can give you up to twice the tire mileage you expect? One that follows your car like a shadow, regardless of terrain, and doesn't scramble your belongings inside?

Avion's unique Smooth-Glide suspension system is the positive answer to all these questions. Hard to believe? Not when you understand Smooth-Glide.

The secret is in the rubber springs. Yes, *rubber*. There are no coil springs, no leaf springs as in conventional suspensions. Smooth-Glide's specially formulated rubber blocks are bonded to steel plates. These friction-free blocks "work" in all directions — up, down and sideways. They soak up action in all directions, spare your frame and baby your contents inside. (Leaf springs are resilient only in a vertical direction. So many road shocks go directly to the frame. Can't happen with Smooth-Glide.) The ride produced by Avion's magic rubber blocks is so amazing, it's almost unreal.

But the advantages are very real to the many Avion owners who have traveled thousands upon thousands of miles with Smooth-Glide Avions.

They find steering easier. Stability rock solid. Control effortless. And so

will you. And maintenance is unknown because there's nothing to lubricate.

The design of Smooth-Glide's rubber springs places the spring centers in line with the tires. Gives a "wide track" advantage that makes your Avion 96% more stable...virtually roll-proof.

Then there's the added advantage of Smooth-Glide's greater road clearance over conventional axles. At least 4" more than some others. With springs as wide apart as the tires and sides of the coach, it gives a nearly perfect foundation to the whole unit. (Most conventional springs are *inside* the wheels giving narrower spring centers and a less stabilizing effect.)

Three vital parts working together make Smooth-Glide's ride so sensational — the rubber blocks, shock absorbers and walking beam. Over a high bump or in a deep chuck hole, weight and shock are evenly distributed between the four wheels. (See photos on this page.) Over high bumps or through deep chuck holes, weight and shock are evenly distributed between the wheels. The wheels walk over obstacles like a caterpillar, without the resultant bounce and jounce of other suspensions.

The 3-way action of the system divides the shock. Tire wear is more even. Many owners boast amazing tire mileage.



Avion has a tremendously strong triple-beam frame of heavy duty steel, including a rugged center beam for added support. Frame members are 5" deep (6" on 31 ft.).

And since Smooth-Glide rubber springs have no wearing or bearing surfaces, there's no rust, no breakage, no lubrication required. Simple. Efficient. Maintenance-free. The rubber isn't affected by temperature extremes, either.

Here's a point women like, too. Smooth-Glide's floating action lets her belongings lead a soft life inside. Clothes stay racked, dishes stay stacked, and appliances are better protected. Your entire Avion stays younger, longer.

Avion adopted this revolutionary system back in 1967. Engineering tests proved it to be so good, that it soon became standard equipment.

Since then a growing number of other travel trailer makers have offered it in their lines. But Avion, along with the supplier, MOR/ryde, pioneered and perfected it on travel trailers.

Now, thousands of Avion owners over countless road miles have verified Smooth-Glide's superiority. Their experience has been so satisfying that Avion fully warrants the system for the original owner's lifetime. This warranty includes axles, hubs, spindles, brakes, rubber springs, shock absorbers and *even the frame!*

We know of no other trailer manufacturers who back their products to this extent. (It's something to consider seriously, when making a purchase.)

Your best way to believe these advantages is to make the tow test with your Avion dealer's cooperation. He will welcome your request.



For your all-weather comfort, Avion's Thermo-X out-insulates them all.

Nearly all travel trailers are insulated. But in varying degrees of effectiveness.

It's an important feature that's difficult to compare.

How do you tell where a trailer is insulated? You can't. And many so-called "insulated" trailers do not have insulated floors.

And to what extent is the roof insulated? Insulation from top to bottom is essential when you travel in different climates.

Then, what kind of insulation is used? Is it glass fiber? It's the traditionally accepted insulation used in all types of construction. But how thick are the bats? And how are they applied to withstand the rigors of road travel? You never know. Because you can't see.

Avion has solved the question with the most advanced insulating material known to man. Urethane foam — an amazing missile-age plastic that will some day replace today's traditional materials.

Urethane foam, called THERMO-X by Avion, is so new, so superior, that its use has been limited to sophisticated government projects and a few commercial applications. For example, rigid urethane foam insulation is used in nuclear submarines and on the fuel tanks of both Atlas and Saturn S-IVB third stage engines. In various capsules and satellites, this foam insulates the entire skin against the extreme temperatures of space. Even the crushable landing pads of the Surveyor moon ship were cushioned by urethane foam.

Commercially, this revolutionary material is used in thin-wall refrigerators, as well as refrigerated transport trucks and freight cars. It will keep the contents of a sealed refrigerated railway car within a few degrees of required temperatures for as long as ten days or more.

In the recreational vehicle industry, only Avion uses Thermo-X throughout — including the floor. Avion introduced it in 1966 and is still alone in offering it. It's expensive to buy and difficult to apply. Small wonder that others shy away from its use.

But Avion believes Thermo-X's advantages for you far outweigh its expense to Avion. Because it has nearly twice the insulating value of conventional glass fiber.

Thermo-X is sprayed on in liquid form. Dramatically, it foams (expands) like a rising cake to 30 times its original volume. And because it is liquid when applied, it creeps into all riveted seams and channels for a positive weatherproof and dustproof seal.

Almost immediately it hardens, enclosing millions of tiny air cells for extra insulating value. Its hardened solid state adds rigidity to Avion exterior walls.

Test the rigidity yourself. Push your hand against the corner of a competitive aluminum trailer of similar shape. Notice how much the skin flexes and yields. Then try it on an Avion. No give at all.

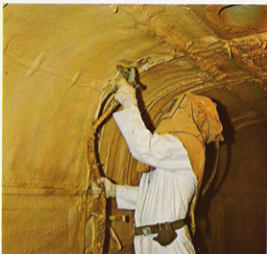
On the other hand, during many miles of road travel, glass fiber blankets tend to sag and settle toward the floor, leaving large areas of uninsulated wall space. Avion's Thermo-X is heat-sealed to the walls in a permanent rigid position. It can't sag or pack. It's permanent. It also surrounds and locks all wiring into position for extra protection.

Because of its closed cellular composition, Thermo-X will not absorb moisture, either. It is effective at temperature extremes from 200° above to 300° below Fahrenheit. These are extremes you'll never trailer into, but it's assuring to know you have this superb protection. Result: you keep cooler in summer and warmer in winter. *Whether you go in heat or snow — Thermo-X protects!*

You enjoy this total protection that's in every niche and cranny of your Avion — walls, ceiling, wheel wells and even throughout the floor. No other trailer made, regardless of price, is so thoroughly insulated.

What about the weight factor? Well, a good grade of balsa — the lightest of woods — weighs approximately 9 pounds per cubic foot. Thermo-X averages only two pounds per cubic foot.

So when you put it all together, Avion's Thermo-X insulation "out-protects" any other insulation material in the industry. It's just one more example of why you get more value, more comfort, and more quality in an Avion Travel Coach.





31' IMPERIAL

Curb Weight* 5100 pounds

Hitch Weight 700 pounds

Overall Length 31' 8"

Wall-to-Wall Inside Length 26' 6"



28' TRAVELCADER

Curb Weight* 4525 pounds

Hitch Weight 640 pounds

Overall Length 28' 2"

Wall-to-Wall Inside Length 23' 7"

Avion Travel Luxury...
in a choice of
four lengths
and a wide variety
of decors



25' VOYAGEUR

Curb Weight* 4325 pounds
Hitch Weight 560 pounds
Overall Length 25' 10"
Wall-to-Wall Inside Length 21' 4"



22' EXPLORER

Curb Weight* 3850 pounds
Hitch Weight 525 pounds
Overall Length 22' 2"
Wall-to-Wall Inside Length 17' 7"

*Includes all standard equipment less fuel and water.

The Travelcade Club... built-in fun with an Avion



Ownership of an Avion Coach assures you a most pleasant surprise! You are immediately eligible for membership in the now-famous Avion Travelcade Club. Never has travel been offered to you in such an exciting, exclusive manner! You can enjoy new travel freedom, added security, new friends, pleasant companionship and new scenes.

Travel adventure is planned and directed by seasoned Travelcaders with the assistance of the professional Avion International Travelcade Director. Gone is the worry about trips to remote areas. Plans and details are set well in advance. You are free to enjoy your trip in complete confidence and relaxation.

Travelcading means more than just trips of thousands of miles. Your local Travelcade Unit conducts frequent weekend Rallies where you'll meet other Avioners in your area. People who enjoy the same travel excitement you do. And find extra fun in just being together.

Naturally, as a member of your Local Unit, you're also a member of the Avion International Travelcade Club.

The official Travelcade cap and insignia (along with your Avion) are your passports to exciting fun! You and other Travelcaders will share group breakfasts, potluck suppers, singing around a campfire, games and dancing, even amateur shows. Sundays there are group church services to crown your week.

Travelcade trips and tours perfectly blend your life-long ambitions with actual trips. You'll visit those wonderful places you've always dreamed of and meet the greatest people in the world... Avioners like yourself.

Want to know more about the Avion Travelcade Club? Stop at your Avion dealer and ask him for a folder and the latest copy of the Travelcade News, or write to Avion Coach Corporation, 1300 East Empire Avenue, Benton Harbor, Michigan 49022.



1971 Avion Travel Coach Specifications



BASIC CONSTRUCTION

- Riveted aluminum interior and exterior construction
- Anodized aluminum exterior
- Triple channel heavy duty 5" subular steel frame (9" on 31 ft.)
- Smooth-ride suspension by MDR/ryde with shock absorbers
- Four tandem axle coach lengths: 22 ft., 26 ft., 28 ft., 31 ft.
- Steel rear bumper for storing waste hose and adapter
- Sprayed-in Thermo-X urethane foam insulation in ceiling and walls
- Thermo-X urethane foam sandwich panel sub-floor
- Vinyl foam seam sealant tape
- Astrovision safety windows of tinted Plexiglas®
- I.C.C. approved running lights
- Electric brakes, all wheels
- Deluxe full wheel covers
- Tires: White side wall Firestone H78-15; Deluxe Champion Fiberglass Sup-R-Roll on 31 ft., Stevia Stevia on 22 ft., 26 ft., and 28 ft.
- Code-approved wiring, plumbing and heating systems
- Wiring and bracing for roof-mounted air conditioner

EXTERIOR CONVENIENCES

- Double 30 lb. aluminum butane tanks
- Front window awning
- Fronted Plexiglas® rear view window
- Awning rail
- Full size aluminum swing out screen door
- Disappearing door step
- 25-foot heavy-duty 110-V cord with storage compartment
- Recessed amber porch entrance light
- Telescoping radio antenna
- Backup lights
- Weatherproof double patio outlet
- Outside trunk door (except in 22 ft.)
- Exterior water hose storage compartment with concealed water hose connection
- Automatic switch-over regulator
- Automatic 6-gallon quick recovery gas/electric water heater
- Exterior deluxe trim

INTERIOR CONVENIENCES

- Screens in all windows
- Onispower electric system with 12-volt batteries, (two 30 amp. in 26 ft. and 31 ft.; two 65 amp. in 22 ft., and 26 ft.) exterior battery case, 110-volt converter-charger and fuse panel
- High density 5" superfoam deluxe cushions, buttoned w/rolled fronts
- Bay View front window
- Deluxe cabinet hardware
- Translucent ceiling vents
- Two ceiling fans
- Two-speed ceiling fan in bath
- Cutting board with built-in storage rack
- Pull-out towel rack
- Crystal color mirrors with ground edges
- Divider curtain between living and bedroom area
- Instrument signal center
- Wrap-around living room draperies, lined
- Choice of hand-crafted woodwork in walnut or avocado finishes
- Cornice beads with recessed lighting
- Mica galley worktops
- High intensity interior lighting system with bayonet type bulbs
- Rule-eye reading lights
- Choice of twin or double beds or side seats in 22 ft., 26 ft., and 31 ft.
- Choice of dining arrangements — front sofa bed with extension table or 46" front dinette with extension table
- Choice of 6 color-coordinated interiors
- Treated, soil-resistant upholstery

- Seamless vinyl cushion floor covering
- Washable vinyl interior wall covering
- Decorative window shades in kitchen and bathroom
- Double shelf locker cabinets
- Bedroom wall comfort pads, vinyl upholstered
- Sealy Posturepedic mattress(es) on permanent bed(s)
- Marine track drapery rods

APPLIANCES & COMFORT FEATURES

- Suburban dyna-Trol forced air gas furnace with fin, 30,000 BTU in 26 ft. and 31 ft.; 22,000 BTU in 22 ft. and 25 ft.; thermostat-controlled; ducted heat in living, bedroom and bathroom areas
- Stainless steel double sink with sink cover
- Water system includes 35-gallon tank with exterior inlet and automatic 12-volt pump
- Television jack with shielded lead-in wire installed in walls
- Complete bath with waste holding tank with shut-off valve, 2-speed ceiling fan, Marine type toilet, lavatory, combination shower/tub, linen closet, clothes hamper, medicine chest with sliding mirror doors, shower curtain
- 7 cu. ft. combination gas/electric refrigerator with separate freezer compartment in 26 ft. and 31 ft., 6 cu. ft. in 25 ft., 4 cu. ft. in 22 ft.
- Built-in 4 burner Magic Chef gas range with tinted window oven door interior light, and bi-fold top
- Range hood with filter, 12-volt power fan and light
- Moon single handle swing faucet with swivel spray aerator

OPTIONS


- Spare tire and carrier
- Extra wheel for spare
- Wheel cover for spare
- Spare tire cover with lock
- Firestone H78-15 Deluxe Champion tires, Fiberglass Sup-R-Roll (standard in 31 ft.)
- Foldaway upper rear bunk with mattress
- Canvas bunks
- Auxiliary gas light
- Roof mounted air conditioner, 110-volt, 10,000 BTU and 12,000 BTU (Recommended for any trailer over 26 ft.)
- TV antenna (UHF & VHF) with swivel shelf
- Music center: Stereo tape player, one tape, and AM and FM radio cartridges
- Extra large hood dinette with 51" cushions in 26 ft. and 31 ft. models
- 7 cu. ft. combination gas/electric refrigerator with separate freezer compartment in 25 ft.
- Gas light
- Hydraulic frame jacks
- Power jack in "A" frame, 12-volt
- Two 80 ampere batteries (standard in 26' and 31')
- Storm windows
- Slumber bags
- Gas bottle gauges
- Water purifier
- Clothes rod in shower
- Choice of 3 color-coordinated carpets
- Choice of 2 color-coordinated quilted bedspreads
- Additional 12-volt outlets
- Built-in cabinet options
 - Shirt hanging closet
 - Entertainment bar cabinet
 - Two drawer utility cabinet
 - Living room corner cabinet
- Provincial folding chair

Avion Coach Corporation reserves the right to make changes at any time, without notice, in prices, color, materials, equipment, specifications and models, and also to discontinue models or make improvements without incorporating such changes in previous models.

AVION

COACH CORPORATION, 1300 EAST EMPIRE AVENUE, BENTON HARBOR, MICHIGAN

® Registered trademark of Avion Coach Corporation

A vintage Avion travel trailer is being towed by a station wagon on a grassy hillside. The scene is captured at sunset, with a warm, orange-red glow in the sky and silhouettes of trees in the background. The trailer is a classic, rounded design with a white exterior and a dark roof. The station wagon is a dark color, likely black or dark brown, and is positioned in front of the trailer, pulling it up the hill. The overall mood is serene and nostalgic, suggesting a peaceful outdoor excursion.

The more you know about travel trailers,
the sooner you'll buy Avion.

Printed in U.S.A.

PARKWAY TRLR SALES
R. 3 1 MI N. OF SHIVELY MOTO
CHAMBERSBURG, PA. 17201