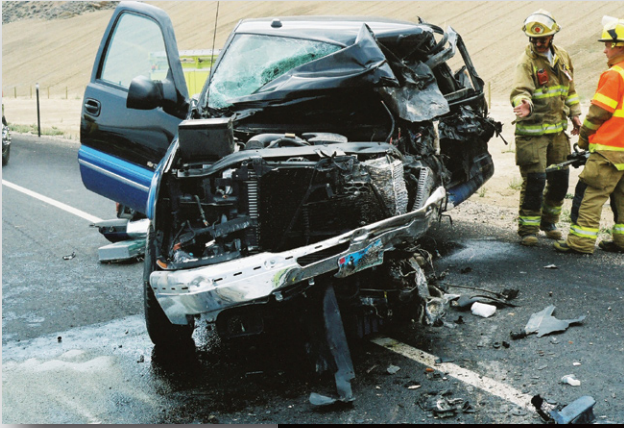


WYOMING DEPARTMENT OF TRANSPORTATION



Highway Safety Program



Evaluation of **ALCOHOL FACTORS** IN CUSTODIAL ARRESTS IN THE STATE OF WYOMING

Supplemental Report (County Statistics)

Wyoming Association of Sheriffs and Chiefs of Police
June 2007

WYOMING DEPARTMENT OF
TRANSPORTATION – Highway Safety Program

EVALUATION OF ALCOHOL FACTORS
IN CUSTODIAL ARRESTS IN THE STATE OF WYOMING

SUPPLEMENTAL REPORT
(COUNTY STATISTICS)

June 2007

This evaluation project was conducted by the Wyoming Association of Sheriffs and Chiefs of Police with Federal 402 Highway Safety funds received from a grant from the Wyoming Department of Transportation - Project No. 070107.

Evaluation of Alcohol Factors in Wyoming Custodial Arrests

INTRODUCTION

The report contains alcohol-related information collected in all twenty-three counties in the State of Wyoming for a period of six months (April 1 through September 30, 2006) by the Wyoming Association of Sheriffs and Chiefs of Police. Information was collected from a total of 9,711 persons who were arrested and subsequently detained in a county detention facility. It also includes statistics from persons booked into the Fremont County Alcohol Crisis Center.

This report provides detailed county specific alcohol-related information and is a Supplemental Report to the Evaluation of Alcohol Factors – May 2007 Report.

TABLE OF CONTENTS

1. ALBANY.....	1-4
2. BIG HORN	5-8
3. CAMPBELL	9-12
4. CARBON	13-16
5. CONVERSE	17-20
6. CROOK	21-24
7. FREMONT	25-28
8. FREMONT – Alcohol Crisis Center	29-32
9. GOSHEN	33-36
10. HOT SPRINGS	37-40
11. JOHNSON	41-44
12. LARAMIE	45-48
13. LINCOLN	49-52
14. NATRONA	53-56
15. NIOBRARA	57-60
16. PARK	61-64
17. PLATTE	65-68
18. SHERIDAN	69-72
19. SUBLETTE	73-76
20. SWEETWATER	77-80
21. TETON	81-84
22. UINTA	85-88
23. WASHAKIE	89-92
24. WESTON	93-96

Albany County
April 1, 2006 – September 30, 2006

Numbers by Department

<i>County</i>	<i>Total</i>			<i>Domestic</i>	<i>Resisting</i>		<i>Public</i>	<i>Alcohol</i>	<i>Traffic</i>			<i>Unknown</i>	<i>Ave.</i>
<i>Department</i>	<i>Offenses</i>	<i>Misdemeanor</i>	<i>Felony</i>	<i>Violence</i>	<i>Arrest</i>	<i>Assault</i>	<i>Intoxication</i>	<i>Involved</i>	<i>Crash</i>	<i>Female</i>	<i>Male</i>	<i>Gender</i>	<i>Age</i>
Albany	413	351	35	10	1	7	38	297	12	52	356	5	26.88
Unknown	1		1								1		19.00
Albany SO	60	46	8	2		1	2	24	2	2	57	1	30.92
Circuit Court	1	1									1		22.00
DCI	3		3					1		1	2		23.00
Laramie PD	279	245	18	8	1	6	32	221	6	35	241	3	26.26
Marshals	1		1							1			42.00
UW PD	30	27	1				4	28	1	9	21		20.79
WHP	38	32	3					23	3	4	33	1	30.44

Percents by Department

<i>County</i>	<i>Total</i>			<i>Domestic</i>	<i>Resisting</i>		<i>Public</i>	<i>Alcohol</i>	<i>Traffic</i>			<i>Unknown</i>
<i>Department</i>	<i>Offenses</i>	<i>Misdemeanor</i>	<i>Felony</i>	<i>Violence</i>	<i>Arrest</i>	<i>Assault</i>	<i>Intoxication</i>	<i>Involved</i>	<i>Crash</i>	<i>Female</i>	<i>Male</i>	<i>Gender</i>
Albany	413	84.99%	8.47%	2.42%	0.24%	1.69%	9.20%	71.91%	2.91%	12.59%	86.20%	1.21%
Unknown	1		100.00%								100.00%	
Albany SO	60	76.67%	13.33%	3.33%		1.67%	3.33%	40.00%	3.33%	3.33%	95.00%	1.67%
Circuit Court	1	100.00%									100.00%	
DCI	3		100.00%					33.33%		33.33%	66.67%	
Laramie PD	279	87.81%	6.45%	2.87%	0.36%	2.15%	11.47%	79.21%	2.15%	12.54%	86.38%	1.08%
Marshals	1		100.00%							100.00%		
UW PD	30	90.00%	3.33%				13.33%	93.33%	3.33%	30.00%	70.00%	
WHP	38	84.21%	7.89%					60.53%	7.89%	10.53%	86.84%	2.63%

MIP Arrests

County Department	DUI Offenses	MIP Arrests	% MIP to DUI	Average MIP BAC
Albany	113	25	22.12%	0.1684
Unknown				
Albany SO	11	1	9.09%	0.1700
Circuit Court				
DCI				
Laramie PD	88	16	18.18%	0.1656
Marshals				
UW PD	7	7	100.00%	0.1711
WHP	8	1	12.50%	0.1940

DUI Arrests

County Department	Total Offenses	DUI Offenses	% DUI Of Total	Average BAC	Open Container	Passenger in Vehicle
Albany	413	113	27.36%	0.1677		
Unknown	1					
Albany SO	60	11	18.33%	0.1688	1	
Circuit Court	1					
DCI	3					
Laramie PD	279	88	31.54%	0.1686	3	3
Marshals	1					
UW PD	30	7	23.33%	0.1937	2	
WHP	38	8	21.05%	0.1375		

Underage DUI Arrests

County Department	DUI Offenses	Underage Offenses	% DUI Of Total	Average BAC	Open Container	Passenger in Vehicle
Albany	113	25	22.12%	0.1579		
Unknown						
Albany SO	11	2	18.18%	0.1750		
Circuit Court						
DCI						
Laramie PD	88	20	22.73%	0.1254	2	1
Marshals						
UW PD	7	2	28.57%	0.1900		
WHP	8	1	12.50%	0.1700		

Meth, Drugs and Public Intoxication

County Department	Total Offenses	Meth Involved	Other Drugs Involved	Public Intox.	Pub. Intox. Average BAC
Albany	413	4	32	38	0.1930
Unknown	1				
Albany SO	60		5	2	
Circuit Court	1				
DCI	3		3		
Laramie PD	279		18	32	0.1930
Marshals	1	1			
UW PD	30		1	4	
WHP	38	3	5		

Notes:

- Other Drugs Involved does not include Meth Involved numbers.
- Laramie PD was the only agency which reported Public Intoxication BAC - it reported BAC for four of its thirty-two Public Intoxication records.

Traffic Crashes

County Department	Traffic Crashes	Alcohol Involved	Wearing Seatbelt	Average BAC
Albany	12	11	4	0.1576
Unknown				
Albany SO	2	2		0.2900
Circuit Court				
DCI				
Laramie PD	6	6	3	0.1342
Marshals				
UW PD	1	1		0.1300
WHP	3	2	1	0.1700

Total Offenses-Alcohol Involvement

<i>County Department</i>	<i>Total Offenses</i>	<i>Number Involving Alcohol</i>	<i>Percent of Total Involving Alcohol</i>
Albany	413	297	71.9%
Unknown	1		
Albany SO	60	24	40.0%
Circuit Court	1		
DCI	3	1	33.3%
Laramie PD	279	221	79.2%
Marshals	1		
UW PD	30	28	93.3%
WHP	38	23	60.5%

Domestic Violence-Alcohol Involvement

<i>County Department</i>	<i>Domestic Violence Offenses</i>	<i>Number Involving Alcohol</i>	<i>Percent of Domestic Violence Offenses Involving Alcohol</i>
Albany	10	3	30.0%
Unknown			
Albany SO	2		
Circuit Court			
DCI			
Laramie PD	8	3	37.5%
Marshals			
UW PD			
WHP			

Felony Offenses-Alcohol Involvement

<i>County Department</i>	<i>Felony Offenses</i>	<i>Number Involving Alcohol</i>	<i>Percent of Felony Offenses Involving Alcohol</i>
Albany	35	7	20.0%
Unknown	1		
Albany SO	8		
Circuit Court			
DCI	3	1	33.3%
Laramie PD	18	5	27.8%
Marshals	1		
UW PD	1		
WHP	3	1	33.3%

Resisting Arrest-Alcohol Involvement

<i>County Department</i>	<i>Resisting Arrest Offenses</i>	<i>Number Involving Alcohol</i>	<i>Percent of Resisting Arrest Offenses Involving Alcohol</i>
Albany	1	1	100.0%
Unknown			
Albany SO			
Circuit Court			
DCI			
Laramie PD	1	1	100.0%
Marshals			
UW PD			
WHP			

Misdemeanor Offenses-Alcohol Involvement

<i>County Department</i>	<i>Misdemeanor Offenses</i>	<i>Number Involving Alcohol</i>	<i>Percent of Misdemeanor Offenses Involving Alcohol</i>
Albany	351	277	78.9%
Unknown			
Albany SO	46	23	50.0%
Circuit Court	1		
DCI			
Laramie PD	245	208	84.9%
Marshals			
UW PD	27	26	96.3%
WHP	32	20	62.5%

Assault-Alcohol Involvement

<i>County Department</i>	<i>Assault Offenses</i>	<i>Number Involving Alcohol</i>	<i>Percent of Assault Offenses Involving Alcohol</i>
Albany	7	2	28.6%
Unknown			
Albany SO	1		
Circuit Court			
DCI			
Laramie PD	6	2	33.3%
Marshals			
UW PD			
WHP			

Location of Alcohol Consumption and Point of Sale by Department

<i>Department</i>	<i>Alcohol Involved</i>	<i>Location of Consumption</i>					<i>No Response</i>	<i>Point of Sale</i>					
		<i>Home</i>	<i>Bar</i>	<i>Party</i>	<i>Car</i>	<i>Other</i>		<i>Home</i>	<i>Bar</i>	<i>Drive Up</i>	<i>Party</i>	<i>Liquor Store</i>	<i>No Response</i>
Unknown													
Albany SO	24	5	5	5		1	8	3	5		4	2	10
Circuit Court													
DCI	1	1						1					
Laramie PD	221	26	68	43	2	6	79	11	66	1	36	14	93
Marshals													
UW PD	28			15	1	1	11				13	1	14
WHP	23	3	7	1	4		8	1	9	2	1	1	9
<i>Albany County Totals</i>	297	35	80	64	7	8	106	16	80	3	54	18	126

Location of Alcohol Consumption

<i>Department</i>	<i>Bar Name</i>	<i>Number of Reports</i>
Albany SO	Centennial Bar	1
	Ranger	3
Laramie PD	3 rd Steet	1
	Buckhorn	10
	Clown's Den	1
	Cowboy	3
	Elks	1
	Elmay's Love Joy	2
	Every bar in Laramie	1
	Jeffrey's	1
	JJ's	3
	Mingles	3
	Mulligan's	1
	Parlor	3
	Ranger	3
WHP	Buckhorn	1
	Mingles	1
	Mulligan's	2
	Woods Landing	1

Big Horn County
April 1, 2006 – September 30, 2006

Numbers by Department

<i>County</i>	<i>Total</i>		<i>Domestic</i>	<i>Resisting</i>		<i>Public</i>	<i>Alcohol</i>	<i>Traffic</i>		<i>Unknown</i>	<i>Ave.</i>		
<i>Department</i>	<i>Offenses</i>	<i>Misdemeanor</i>	<i>Felony</i>	<i>Violence</i>	<i>Arrest</i>	<i>Assault</i>	<i>Intoxication</i>	<i>Involved</i>	<i>Crash</i>	<i>Female</i>	<i>Male</i>	<i>Gender</i>	<i>Age</i>
Big Horn	161	149	161	11	2	8	13	115	5	35	125	1	33.2
Basin PD	9	6	2	1		1		5		2	7		37.3
Big Horn SO	119	113	4	10	2	6	12	83	5	28	90	1	32.2
Deaver PD	2	2								1	1		40.5
Lovell PD	10	8					1	9		1	9		41.2
Probation & Parole	1	1						1			1		42.0
WHP	19	18	1					16		3	16		31.9

Percents by Department

<i>County</i>	<i>Total</i>		<i>Domestic</i>	<i>Resisting</i>		<i>Public</i>	<i>Alcohol</i>	<i>Traffic</i>		<i>Unknown</i>		
<i>Department</i>	<i>Offenses</i>	<i>Misdemeanor</i>	<i>Felony</i>	<i>Violence</i>	<i>Arrest</i>	<i>Assault</i>	<i>Intoxication</i>	<i>Involved</i>	<i>Crash</i>	<i>Female</i>	<i>Male</i>	<i>Gender</i>
Big Horn	161	92.55%	100.00%	6.83%	1.24%	4.97%	8.07%	71.43%	3.11%	21.74%	77.64%	0.62%
Basin PD	9	66.67%	22.22%	11.11%		11.11%		55.56%		22.22%	77.78%	
Big Horn SO	119	94.96%	3.36%	8.40%	1.68%	5.04%	10.08%	69.75%	4.20%	23.53%	75.63%	0.84%
Deaver PD	2	100.00%								50.00%	50.00%	
Lovell PD	10	80.00%					10.00%	90.00%		10.00%	90.00%	
Probation & Parole	1	100.00%						100.00%			100.00%	
WHP	19	94.74%	5.26%					84.21%		15.79%	84.21%	

MIP Arrests

County Department	DUI Offenses	MIP Arrests	% MIP to DUI	Average MIP BAC
Big Horn	48	8	16.67%	0.0981
Basin PD	2			
Big Horn SO	31	8	25.81%	0.0981
Deaver PD				
Lovell PD	3			
Probation & Parole				
WHP	12			

DUI Arrests

County Department	Total Offenses	DUI Offenses	% DUI Of Total	Average BAC	Open Container	Passenger in Vehicle
Big Horn	161	48	29.81%		5	
Basin PD	9	2	22.22%	0.0905		
Big Horn SO	119	31	26.05%	0.1538	4	
Deaver PD	2					
Lovell PD	10	3	30.00%	0.1257		
Probation & Parole	1					
WHP	19	12	63.16%	0.1155	1	1

Underage DUI Arrests

County Department	DUI Offenses	Underage Offenses	% DUI Of Total	Average BAC	Open Container	Passenger in Vehicle
Big Horn	48	5	10.52%		2	
Basin PD	2					
Big Horn SO	31	3	9.68%	0.1580	2	
Deaver PD						
Lovell PD	3	1	33.33%	0.1900		
Probation & Parole						
WHP	12	1	8.33%	0.1700		

Meth, Drugs and Public Intoxication

County Department	Total Offenses	Meth Involved	Other Drugs Involved	Public Intox.	Pub. Intox. Average BAC
Big Horn	161	2	19	13	0.1317
Basin PD	9	1			
Big Horn SO	119	1	18	12	0.1317
Deaver PD	2				
Lovell PD	10		1	1	
Probation & Parole	1				
WHP	19				

Notes:

- Other Drugs Involved does not include Meth Involved numbers.
- Big Horn SO was the only agency which reported Public Intoxication BAC - it reported BAC for six of its twelve Public Intoxication records.

Traffic Crashes

County Department	Traffic Crashes	Alcohol Involved	Wearing Seatbelt	Average BAC
Big Horn	5	5	0	0.1620
Basin PD				
Big Horn SO	5	5		0.1620
Deaver PD				
Lovell PD				
Probation & Parole				
WHP				

Total Offenses-Alcohol Involvement

<i>County Department</i>	<i>Total Offenses</i>	<i>Number Involving Alcohol</i>	<i>Percent of Total Involving Alcohol</i>
Big Horn	161	115	71.43%
Basin PD	9	5	55.56%
Big Horn SO	119	83	69.75%
Deaver PD	2		
Lovell PD	10	9	90.00%
Probation & Parole	1	1	100.00%
WHP	19	16	84.21%

Domestic Violence-Alcohol Involvement

<i>County Department</i>	<i>Domestic Violence Offenses</i>	<i>Number Involving Alcohol</i>	<i>Percent of Domestic Violence Offenses Involving Alcohol</i>
Big Horn	11	9	81.82%
Basin PD	1	1	100.00%
Big Horn SO	10	8	80.00%
Deaver PD			
Lovell PD			
Probation & Parole			
WHP			

Felony Offenses-Alcohol Involvement

<i>County Department</i>	<i>Felony Offenses</i>	<i>Number Involving Alcohol</i>	<i>Percent of Felony Offenses Involving Alcohol</i>
Big Horn	161	2	1.24%
Basin PD	2	1	50.00%
Big Horn SO	4		
Deaver PD			
Lovell PD			
Probation & Parole			
WHP	1	1	100.00%

Resisting Arrest-Alcohol Involvement

<i>County Department</i>	<i>Resisting Arrest Offenses</i>	<i>Number Involving Alcohol</i>	<i>Percent of Resisting Arrest Offenses Involving Alcohol</i>
Big Horn	2	2	100.00%
Basin PD			
Big Horn SO	2	2	100.00%
Deaver PD			
Lovell PD			
Probation & Parole			
WHP			

Misdemeanor Offenses-Alcohol Involvement

<i>County Department</i>	<i>Misdemeanor Offenses</i>	<i>Number Involving Alcohol</i>	<i>Percent of Misdemeanor Offenses Involving Alcohol</i>
Big Horn	149	108	72.48%
Basin PD	6	3	50.00%
Big Horn SO	113	81	71.68%
Deaver PD	2		
Lovell PD	8	7	87.50%
Probation & Parole	1	1	100.00%
WHP	18	15	83.33%

Assault-Alcohol Involvement

<i>County Department</i>	<i>Assault Offenses</i>	<i>Number Involving Alcohol</i>	<i>Percent of Assault Offenses Involving Alcohol</i>
Big Horn	8	6	75.00%
Basin PD	1	1	100.00%
Big Horn SO	6	4	66.67%
Deaver PD			
Lovell PD			
Probation & Parole			
WHP			

Location of Alcohol Consumption and Point of Sale by Department

<i>Department</i>	<i>Location of Consumption</i>							<i>Point of Sale</i>					
	<i>Alcohol Involved</i>	<i>Home</i>	<i>Bar</i>	<i>Party</i>	<i>Car</i>	<i>Other</i>	<i>No Response</i>	<i>Home</i>	<i>Bar</i>	<i>Drive Up</i>	<i>Party</i>	<i>Liquor Store</i>	<i>No Response</i>
Basin PD	5	1			1		3					1	4
Big Horn SO	83	15	24	14	8	3	19	7	25	1	10	8	33
Deaver PD													
Lovell PD	9		2		1	1	5		2				7
Probation & Parole	1	1						1					
WHP	16	4	5		4	1	2	3	7			1	4
<i>Big Horn County Totals</i>	115	22	31	14	14	5	29	12	34	1	10	10	48

Location of Alcohol Consumption

<i>Department</i>	<i>Bar Name</i>	<i>Number of Reports</i>
Big Horn SO	Branding Iron	6
	Byron Bar	1
	Hideout, Shell, WY	1
	Silver Spur	1
	Smokehouse	6
	Stockman's	2
WHP	Highway Bar	2
	Stockman's	1

Campbell County
April 1, 2006 – September 30, 2006

Numbers by Department

<i>County</i>	<i>Total</i>			<i>Domestic</i>	<i>Resisting</i>		<i>Public</i>	<i>Alcohol</i>	<i>Traffic</i>			<i>Unknown</i>	<i>Ave.</i>
<i>Department</i>	<i>Offenses</i>	<i>Misdemeanor</i>	<i>Felony</i>	<i>Violence</i>	<i>Arrest</i>	<i>Assault</i>	<i>Intoxication</i>	<i>Involved</i>	<i>Crash</i>	<i>Female</i>	<i>Male</i>	<i>Gender</i>	<i>Age</i>
Campbell	805	684	70	47	7	16	59	522	44	142	661	2	31.78
Campbell SO	316	264	41	15	3	4	2	162	20	62	253	1	30.45
Gillette PD	449	383	27	32	4	12	57	326	22	73	375	1	32.44
Probation & Parole	1									1			30.00
WHP	33	32	1					29	2	6	27		33.70
Wright PD	6	5	1					5			6		42.17

Percents by Department

<i>County</i>	<i>Total</i>			<i>Domestic</i>	<i>Resisting</i>		<i>Public</i>	<i>Alcohol</i>	<i>Traffic</i>			<i>Unknown</i>
<i>Department</i>	<i>Offenses</i>	<i>Misdemeanor</i>	<i>Felony</i>	<i>Violence</i>	<i>Arrest</i>	<i>Assault</i>	<i>Intoxication</i>	<i>Involved</i>	<i>Crash</i>	<i>Female</i>	<i>Male</i>	<i>Gender</i>
Campbell	805	84.97%	8.70%	5.84%	0.87%	1.99%	7.33%	64.84%	5.47%	17.64%	82.11%	0.25%
Campbell SO	316	83.54%	12.97%	4.75%	0.95%	1.27%	0.63%	51.27%	6.33%	19.62%	80.06%	0.32%
Gillette PD	449	85.30%	6.01%	7.13%	0.89%	2.67%	12.69%	72.61%	4.90%	16.26%	83.52%	0.22%
Probation & Parole	1									100.00%		
WHP	33	96.97%	3.03%					87.88%	6.06%	18.18%	81.82%	
Wright PD	6	83.33%	16.67%					83.33%			100.00%	

MIP Arrests

<i>County</i>	<i>DUI</i>	<i>MIP</i>	<i>% MIP to</i>	<i>Average</i>
<i>Department</i>	<i>Offenses</i>	<i>Arrests</i>	<i>DUI</i>	<i>MIP BAC</i>
Campbell	217	15	6.91%	0.1139
Campbell SO	86	7	8.14%	0.1153
Gillette PD	106	8	7.55%	0.1128
Probation & Parole				
WHP	21			
Wright PD	4			

Meth, Drugs and Public Intoxication

<i>County</i>	<i>Total</i>	<i>Meth</i>	<i>Other</i>	<i>Public</i>	<i>Pub. Intox.</i>
<i>Department</i>	<i>Offenses</i>	<i>Involved</i>	<i>Drugs</i>	<i>Intox.</i>	<i>Average</i>
			<i>Involved</i>		<i>BAC</i>
Campbell	805	12	47	59	0.2693
Campbell SO	316	5	21	2	0.2170
Gillette PD	449	7	25	57	0.2788
Probation & Parole	1				
WHP	33		1		
Wright PD	6				

DUI Arrests

<i>County</i>	<i>Total</i>	<i>DUI</i>	<i>% DUI</i>	<i>Average</i>	<i>Open</i>	<i>Passenger</i>
<i>Department</i>	<i>Offenses</i>	<i>Offenses</i>	<i>Of Total</i>	<i>BAC</i>	<i>Container</i>	<i>in Vehicle</i>
Campbell	805	217	26.96%	0.1625	11	8
Campbell SO	316	86	27.22%	0.1474	9	5
Gillette PD	449	106	23.61%	0.1775	2	3
Probation & Parole	1					
WHP	33	21	63.64%	0.1518		
Wright PD	6	4	66.67%	0.1468		

Traffic Crashes

<i>County</i>	<i>Traffic</i>	<i>Alcohol</i>	<i>Wearing</i>	<i>Average</i>
<i>Department</i>	<i>Crashes</i>	<i>Involved</i>	<i>Seatbelt</i>	<i>BAC</i>
Campbell	44	39	14	0.1540
Campbell SO	20	19	4	0.1593
Gillette PD	22	18	9	0.1581
Probation & Parole				
WHP	2	2	1	0.1110
Wright PD				

Underage DUI Arrests

<i>County</i>	<i>DUI</i>	<i>Underage</i>	<i>% DUI</i>	<i>Average</i>	<i>Open</i>	<i>Passenger</i>
<i>Department</i>	<i>Offenses</i>	<i>Offenses</i>	<i>Of Total</i>	<i>BAC</i>	<i>Container</i>	<i>in Vehicle</i>
Campbell	217	23	10.60%	0.1186	1	
Campbell SO	86	15	17.44%	0.1090	1	
Gillette PD	106	7	6.60%	0.1377		
Probation & Parole						
WHP	21	1	4.76%	0.1290		
Wright PD	4					

Total Offenses-Alcohol Involvement

County Department	Total Offenses	Number Involving Alcohol	Percent of Total Involving Alcohol
Campbell	805	522	64.84%
Campbell SO	316	162	51.27%
Gillette PD	449	326	72.61%
Probation & Parole	1		
WHP	33	29	87.88%
Wright PD	6	5	83.33%

Domestic Violence-Alcohol Involvement

County Department	Domestic Violence Offenses	Number Involving Alcohol	Percent of Domestic Violence Offenses Involving Alcohol
Campbell	47	27	57.45%
Campbell SO	15	8	53.33%
Gillette PD	32	19	59.38%
Probation & Parole			
WHP			
Wright PD			

Felony Offenses-Alcohol Involvement

County Department	Felony Offenses	Number Involving Alcohol	Percent of Felony Offenses Involving Alcohol
Campbell	70	14	20.00%
Campbell SO	41	6	14.63%
Gillette PD	27	8	29.63%
Probation & Parole			
WHP	1		
Wright PD	1		

Resisting Arrest-Alcohol Involvement

County Department	Resisting Arrest Offenses	Number Involving Alcohol	Percent of Resisting Arrest Offenses Involving Alcohol
Campbell	7	6	85.71%
Campbell SO	3	2	66.67%
Gillette PD	4	4	100.00%
Probation & Parole			
WHP			
Wright PD			

Misdemeanor Offenses-Alcohol Involvement

County Department	Misdemeanor Offenses	Number Involving Alcohol	Percent of Misdemeanor Offenses Involving Alcohol
Campbell	684	477	69.74%
Campbell SO	264	150	56.82%
Gillette PD	383	293	76.50%
Probation & Parole			
WHP	32	29	90.63%
Wright PD	5	5	100.00%

Assault-Alcohol Involvement

County Department	Assault Offenses	Number Involving Alcohol	Percent of Assault Offenses Involving Alcohol
Campbell	16	7	43.75%
Campbell SO	4	1	25.00%
Gillette PD	12	6	50.00%
Probation & Parole			
WHP			
Wright PD			

Location of Alcohol Consumption and Point of Sale by Department

<i>Department</i>	<i>Location of Consumption</i>							<i>Point of Sale</i>					
	<i>Alcohol Involved</i>	<i>Home</i>	<i>Bar</i>	<i>Party</i>	<i>Car</i>	<i>Other</i>	<i>No Response</i>	<i>Home</i>	<i>Bar</i>	<i>Drive Up</i>	<i>Party</i>	<i>Liquor Store</i>	<i>No Response</i>
Campbell SO	162	30	64	13	12	10	34	25	28	5	5	12	47
Gillette PD	326	59	137	7	11	17	95	33	140	9	9	23	110
Probation & Parole													
WHP	29	5	14	1	2	2	4	3	17			1	7
Wright PD	5	1	1		2		1	1	1	1		1	1

Campbell County Totals

Location of Alcohol Consumption

<i>Department</i>	<i>Bar Name</i>	<i>Number of Reports</i>	<i>Department</i>	<i>Bar Name</i>	<i>Number of Reports</i>	
Campbell SO		4	Gillette PD	Jack's	3	
		2		Mingles	8	
	Attitudes	1		Ole's Bar	1	
	Brian's Place	3		Other Side	4	
	Camel Lanes	1		Pat's	1	
	Fireside	1		WHP	Towers West	2
	Golf Course	1			Bowling Alley (Frontier)	1
	Hank's Lounge	3			Brian's Place	1
	Jack's	1			Fireside	1
	Jake's	3			Hank's Lounge	1
	Lakeside	1			Jake's	1
	Mingles	2			Lakeside	1
	Montgomery	1			Mingles	1
	Other Side	1			Spotted Horse	1
	Pine Haven	2			Turf	1
	Rozet	3		Silverado – Deadwood	1	
	Rusty Nail					
	Sports Bar					
Gillette PD	Attitudes	15				
	Brian's Place	1				
	Camel Lanes	1				
	East Side Liquor	4				
	Fireside	3				
Goodtimes	5					

Carbon County
April 1, 2006 – September 30, 2006

Numbers by Department

<i>County</i>	<i>Total</i>			<i>Domestic</i>	<i>Resisting</i>		<i>Public</i>	<i>Alcohol</i>	<i>Traffic</i>			<i>Unknown</i>	<i>Ave.</i>
<i>Department</i>	<i>Offenses</i>	<i>Misdemeanor</i>	<i>Felony</i>	<i>Violence</i>	<i>Arrest</i>	<i>Assault</i>	<i>Intoxication</i>	<i>Involved</i>	<i>Crash</i>	<i>Female</i>	<i>Male</i>	<i>Gender</i>	<i>Age</i>
Carbon	405	353	50	17	7	30	8	213	25	76	321	8	31.51
Unknown	1	1									1		21.00
Baggs PD	2	1					1	2			2		26.00
Carbon SO	86	61	25	2	1	9	1	26	3	17	69		28.57
DCI	3	2	2							2	1		38.33
Encampment PD	1	1									1		18.00
Hanna PD	2	2			1	2		2			2		42.50
Rawlins PD	245	225	19	14	4	19	5	154	17	48	192	5	31.77
Saratoga PD	5	4		1				2		1	4		35.40
Sinclair PD	6	4	2					1		1	5		30.00
WHP	54	52	2		1		1	26	5	7	44	3	34.68

Percents by Department

<i>County</i>	<i>Total</i>			<i>Domestic</i>	<i>Resisting</i>		<i>Public</i>	<i>Alcohol</i>	<i>Traffic</i>			<i>Unknown</i>
<i>Department</i>	<i>Offenses</i>	<i>Misdemeanor</i>	<i>Felony</i>	<i>Violence</i>	<i>Arrest</i>	<i>Assault</i>	<i>Intoxication</i>	<i>Involved</i>	<i>Crash</i>	<i>Female</i>	<i>Male</i>	<i>Gender</i>
Carbon	405	87.16%	12.35%	4.20%	1.73%	7.41%	1.98%	52.59%	6.17%	18.77%	79.26%	1.98%
Unknown	1	100.00%									100.00%	
Baggs PD	2	50.00%					50.00%	100.00%			100.00%	
Carbon SO	86	70.93%	29.07%	2.33%	1.16%	10.47%	1.16%	30.23%	3.49%	19.77%	80.23%	
DCI	3	66.67%	66.67%							66.67%	33.33%	
Encampment PD	1	100.00%									100.00%	
Hanna PD	2	100.00%			50.00%	100.00%		100.00%			100.00%	
Rawlins PD	245	91.84%	7.76%	5.71%	1.63%	7.76%	2.04%	62.86%	6.94%	19.59%	78.37%	2.04%
Saratoga PD	5	80.00%		20.00%				40.00%		20.00%	80.00%	
Sinclair PD	6	66.67%	33.33%					16.67%		16.67%	83.33%	
WHP	54	96.30%	3.70%		1.85%		1.85%	48.15%	9.26%	12.96%	81.48%	5.56%

MIP Arrests

County Department	DUI Offenses	MIP Arrests	% MIP to DUI	Average MIP BAC
Carbon	80	10	12.50%	0.1144
Unknown				
Baggs PD	1	1	100.00%	0.1890
Carbon SO	9	1	11.11%	0.1400
DCI				
Encampment PD				
Hanna PD				
Rawlins PD	57	8	14.04%	0.1019
Saratoga PD	1			
Sinclair PD	1			
WHP	11			

DUI Arrests

County Department	Total Offenses	DUI Offenses	% DUI Of Total	Ave. BAC	Open Container	Passenger in Vehicle
Carbon	405	80	19.75%	0.1569		
Unknown	1					
Baggs PD	2	1	50.00%	0.1890		
Carbon SO	86	9	10.47%	0.1872	1	
DCI	3					
Encampment PD	1					
Hanna PD	2					
Rawlins PD	245	57	23.27%	0.1492	4	3
Saratoga PD	5	1	20.00%	0.1800		
Sinclair PD	6	1	16.67%	0.1000	1	
WHP	54	11	20.37%	0.1722	3	2

Underage DUI Arrests

County Department	DUI Offenses	Underage Offenses	% DUI Of Total	Ave. BAC	Open Container	Passenger in Vehicle
Carbon	80	7	8.75%	0.1456	1	2
Unknown						
Baggs PD	1	1	100.00%	0.1890		
Carbon SO	9	1	11.11%	0.1400		
DCI						
Encampment PD						
Hanna PD						
Rawlins PD	57	4	7.02%	0.1325		1
Saratoga PD	1					
Sinclair PD	1					
WHP	11	1	9.09%	0.1600	1	1

Meth, Drugs and Public Intoxication

County Department	Total Offenses	Meth Involved	Other Drugs Involved	Public Intox.	Pub. Intox. Ave. BAC
Carbon	405	6	40	8	0.1983
Unknown	1		1		
Baggs PD	2			1	0.2700
Carbon SO	86	2	4	1	0.2000
DCI	3	1	1		
Encampment PD	1				
Hanna PD	2				
Rawlins PD	245	3	26	5	
Saratoga PD	5				
Sinclair PD	6				
WHP	54		8	1	0.1250

Traffic Crashes

County Department	Traffic Crashes	Alcohol Involved	Wearing Seatbelt	Average BAC
Carbon	25	24	3	0.1369
Unknown				
Baggs PD				
Carbon SO	3	3	1	0.1385
DCI				
Encampment PD				
Hanna PD				
Rawlins PD	17	16		0.1199
Saratoga PD				
Sinclair PD				
WHP	5	5	2	0.1950

Total Offenses-Alcohol Involvement

County Department	Total Offenses	Number Involving Alcohol	Percent of Total Involving Alcohol
Carbon	405	213	52.59%
Unknown	1		
Baggs PD	2	2	100.0%
Carbon SO	86	26	30.23%
DCI	3		
Encampmt PD	1		
Hanna PD	2	2	100.0%
Rawlins PD	245	154	62.86%
Saratoga PD	5	2	40.00%
Sinclair PD	6	1	16.67%
WHP	54	26	48.15%

Felony Offenses-Alcohol Involvement

County Department	Felony Offenses	Number Involving Alcohol	Percent of Felony Offenses Involving Alcohol
Carbon	50	13	26.00%
Unknown			
Baggs PD			
Carbon SO	25	5	20.00%
DCI	2		
Encampmt PD			
Hanna PD			
Rawlins PD	19	8	42.11%
Saratoga PD			
Sinclair PD	2		
WHP	50		

Misdemeanor Offenses-Alcohol Involvement

County Department	Misdemeanor Offenses	Number Involving Alcohol	Percent of Misdemeanor Offenses Involving Alcohol
Carbon	353	199	56.37%
Unknown	1		
Baggs PD	1	1	100.00%
Carbon SO	61	20	32.79%
DCI	2		
Encampmt PD	1		
Hanna PD	2	2	100.00%
Rawlins PD	225	147	65.33%
Saratoga PD	4	2	50.00%
Sinclair PD	4	1	25.00%
WHP	52	26	50.00%

Domestic Violence-Alcohol Involvement

County Department	Domestic Violence Offenses	Number Involving Alcohol	Percent of Domestic Violence Offenses Involving Alcohol
Carbon	17	13	76.47%
Unknown			
Baggs PD			
Carbon SO	2	2	100.00%
DCI			
Encampmt PD			
Hanna PD			
Rawlins PD	14	11	78.57%
Saratoga PD	1		
Sinclair PD			
WHP			

Resisting Arrest-Alcohol Involvement

County Department	Resisting Arrest Offenses	Number Involving Alcohol	Percent of Resisting Arrest Offenses Involving Alcohol
Carbon	7	3	42.76%
Unknown			
Baggs PD			
Carbon SO	1		
DCI			
Encampmt PD			
Hanna PD	1	1	100.00%
Rawlins PD	4	1	25.00%
Saratoga PD			
Sinclair PD			
WHP	1	1	100.00%

Assault-Alcohol Involvement

County Department	Assault Offenses	Number Involving Alcohol	Percent of Assault Offenses Involving Alcohol
Carbon	30	19	63.33%
Unknown			
Baggs PD			
Carbon SO	9	4	44.44%
DCI			
Encampmt PD			
Hanna PD	2	2	100.00%
Rawlins PD	19	13	68.42%
Saratoga PD			
Sinclair PD			
WHP			

Location of Alcohol Consumption and Point of Sale by Department

<i>Department</i>	<i>Alcohol Involved</i>	<i>Location of Consumption</i>						<i>Point of Sale</i>					
		<i>Home</i>	<i>Bar</i>	<i>Party</i>	<i>Car</i>	<i>Other</i>	<i>No Response</i>	<i>Home</i>	<i>Bar</i>	<i>Drive Up</i>	<i>Party</i>	<i>Liquor Store</i>	<i>No Response</i>
Unknown													
Baggs PD	2	1	1						1				1
Carbon SO	26	5	6	1	4	2	8	2	8	1	1	1	13
DCI													
Encampmt PD													
Hanna PD	2	1	1					1	1				
Rawlins PD	154	33	61	7	7	11	36	16	63	1	6	19	49
Saratoga PD	2		1				1		1				1
Sinclair PD	1				1							1	
WHP	26	3	8	1	6		8		9	1		5	11
<i>Carbon County Totals</i>	213	43	78	9	18	13	53	19	83	3	7	26	75

Location of Alcohol Consumption

<i>Department</i>	<i>Bar Name</i>	<i>Number of Reports</i>	<i>Department</i>	<i>Bar Name</i>	<i>Number of Reports</i>
Baggs PD	Drifters	1	Rawlins PD	Office	2
Carbon SO	American Legion	1		Pepper Mill	7
	Drifter's	1		Pizza Hut	1
	Old Baby Club	1		Rifleman	5
	Wyoming Bar	1		Sportsman	1
Hanna PD	Skinny's	1		Wyoming Bar	2
	Dingy Dan's	1	Saratoga PD	Rustic Bar	1
Rawlins PD	After House	1	WHP	Mike's Big City	2
	Elks	1		Rustic	2
	Hole in the Wall	3		Virginian	2
	Iron Horse	1		Whistle Pig	1
	Keg Bar	2			
	Legends	1			
	Mike's Big City	10			

Converse County
April 1, 2006 – September 30, 2006

Numbers by Department

<i>County</i> <i>Department</i>	<i>Total</i> <i>Offenses</i>	<i>Misdemeanor</i>	<i>Felony</i>	<i>Domestic</i> <i>Violence</i>	<i>Resisting</i> <i>Arrest</i>	<i>Assault</i>	<i>Public</i> <i>Intoxication</i>	<i>Alcohol</i> <i>Involved</i>	<i>Traffic</i> <i>Crash</i>	<i>Female</i>	<i>Male</i>	<i>Unknown</i> <i>Gender</i>	<i>Ave.</i> <i>Age</i>
Converse	209	180	21	19	6	6	15	137	8	45	156	8	34.15
Unknown	1	1						1			1		
Converse SO	41	38	7	6	1	4	1	18	1	7	33	1	37.43
DCI	1		1								1		
Douglas PD	115	96	12	10	5	2	8	82	4	29	80	6	32.12
Glenrock PD	22	17		3			6	18	2	4	18		34.76
WHP	29	28	1					18	1	5	23	1	41.79

Percents by Department

<i>County</i> <i>Department</i>	<i>Total</i> <i>Offenses</i>	<i>Misdemeanor</i>	<i>Felony</i>	<i>Domestic</i> <i>Violence</i>	<i>Resisting</i> <i>Arrest</i>	<i>Assault</i>	<i>Public</i> <i>Intoxication</i>	<i>Alcohol</i> <i>Involved</i>	<i>Traffic</i> <i>Crash</i>	<i>Female</i>	<i>Male</i>	<i>Unknown</i> <i>Gender</i>
Converse	209	86.12%	10.05%	9.09%	2.87%	2.87%	7.18%	65.55%	3.83%	21.53%	74.64%	3.83%
Unknown	1	100.00%						100.00%			100.00%	
Converse SO	41	92.68%	17.07%	14.63%	2.44%	9.76%	2.44%	43.90%	2.44%	17.07%	80.49%	2.44%
DCI	1		100.00%								100.00%	
Douglas PD	115	83.48%	10.43%	8.70%	4.35%	1.74%	6.96%	71.30%	3.48%	25.22%	69.57%	5.22%
Glenrock PD	22	77.27%		13.64%			27.27%	81.82%	9.09%	18.18%	81.82%	
WHP	29	96.55%	3.45%				0.00%	62.07%	3.45%	17.24%	79.31%	3.45%

Note: The percent of felonies and misdemeanors in Converse County or in a given department do not add to 100% because there were a number of reports which did not indicate either category.

MIP Arrests

County Department	DUI Offenses	MIP Arrests	% MIP to DUI	Average MIP BAC
Converse	68	6	8.82%	0.1337
Converse SO	9	2	22.22%	0.1200
DCI				
Douglas PD	38	3	7.89%	0.1743
Glenrock PD	3			
WHP	13	1	7.69%	0.1200

DUI Arrests

County Department	Total Offenses	DUI Offenses	% DUI Of Total	Average BAC	Open Container	Passenger in Vehicle
Converse	209	68	32.54%	0.1495	14	7
Unknown	1	1	100.00%	0.0900		
Converse SO	41	9	21.95%	0.1649	4	2
Douglas PD	115	38	33.04%	0.1467	7	3
Glenrock PD	22	3	13.64%	0.1733		
WHP	29	13	44.83%	0.1373	3	2

Underage DUI Arrests

County Department	DUI Offenses	Underage Offenses	% DUI Of Total	Average BAC	Open Container	Passenger in Vehicle
Converse	68	41	60.29%		9	5
Unknown	1					
Converse SO	9	4	44.44%	0.2290	2	1
Douglas PD	38	32	84.21%	0.1463	6	3
Glenrock PD	3	1	33.33%	0.1100		
WHP	13	4	30.77%	0.1805	1	1

Meth, Drugs and Public Intoxication

County Department	Total Offenses	Meth Involved	Other Drugs Involved	Public Intox.	Pub. Intox. Average BAC
Converse	209	9	16	15	0.205
Unknown	1				
Converse SO	41	6	3	1	
DCI	1	1			
Douglas PD	115	1	10	8	
Glenrock PD	22		1	6	0.205
WHP	29	1	1		

Notes:

- Other Drugs Involved does not include Meth Involved numbers.
- Glenrock PD was the only agency which reported Public Intoxication BAC - it reported BAC for three of the six Public Intoxication records.

Traffic Crashes

County Department	Traffic Crashes	Alcohol Involved	Wearing Seatbelt	Average BAC
Converse	8	7	1	0.235
Converse SO	1	1		0.290
DCI				
Douglas PD	4	3	1	0.235
Glenrock PD	2	2		
WHP	1	1		0.180

Note: Two of the four alcohol-involved traffic accidents in Douglas PD did not report BAC and neither of the Glenrock PD alcohol-involved traffic accidents reported BAC.

Total Offenses-Alcohol Involvement

<i>County Department</i>	<i>Total Offenses</i>	<i>Number Involving Alcohol</i>	<i>Percent of Total Involving Alcohol</i>
Converse	209	137	65.6%
Unknown	1	1	100.0%
Converse SO	41	18	43.9%
DCI	1		
Douglas PD	115	82	71.3%
Glenrock PD	22	18	81.8%
WHP	29	18	62.1%

Felony Offenses-Alcohol Involvement

<i>County Department</i>	<i>Felony Offenses</i>	<i>Number Involving Alcohol</i>	<i>Percent of Felony Offenses Involving Alcohol</i>
Converse	21	7	33.3%
Unknown			
Converse SO	7	2	28.6%
DCI	1		
Douglas PD	12	5	41.7%
Glenrock PD			
WHP	1		

Misdemeanor Offenses-Alcohol Involvement

<i>County Department</i>	<i>Misdemeanor Offenses</i>	<i>Number Involving Alcohol</i>	<i>Percent of Misdemeanor Offenses Involving Alcohol</i>
Converse	180	120	66.7%
Unknown	1	1	100.0%
Converse SO	38	17	44.7%
DCI			
Douglas PD	96	72	75.0%
Glenrock PD	17	13	76.5%
WHP	28	17	60.7%

Domestic Violence-Alcohol Involvement

<i>County Department</i>	<i>Domestic Violence Offenses</i>	<i>Number Involving Alcohol</i>	<i>Percent of Domestic Violence Offenses Involving Alcohol</i>
Converse	19	14	73.7%
Unknown			
Converse SO	6	3	50.0%
DCI			
Douglas PD	10	8	80.0%
Glenrock PD	3	3	100.0%
WHP			

Resisting Arrest-Alcohol Involvement

<i>County Department</i>	<i>Resisting Arrest Offenses</i>	<i>Number Involving Alcohol</i>	<i>Percent of Resisting Arrest Offenses Involving Alcohol</i>
Converse	6	6	100.0%
Unknown			
Converse SO	1	1	0.0%
DCI			
Douglas PD	5	5	100.0%
Glenrock PD			
WHP			

Assault-Alcohol Involvement

<i>County Department</i>	<i>Assault Offenses</i>	<i>Number Involving Alcohol</i>	<i>Percent of Assault Offenses Involving Alcohol</i>
Converse	6	3	50.0%
Unknown			
Converse SO	4	2	50.0%
DCI			
Douglas PD	2	1	50.0%
Glenrock PD			
WHP			

Converse County

Location of Alcohol Consumption and Point of Sale by Department

<i>Department</i>	<i>Alcohol Involved</i>	<i>Location of Consumption</i>					<i>No Response</i>	<i>Point of Sale</i>					
		<i>Home</i>	<i>Bar</i>	<i>Party</i>	<i>Car</i>	<i>Other</i>		<i>Home</i>	<i>Bar</i>	<i>Drive Up</i>	<i>Party</i>	<i>Liquor Store</i>	<i>No Response</i>
Unknown	1		1					1					
Converse SO	18	3	4	2	4		5	4		1		2	11
DCI													
Douglas PD	82	13	43	7	5		14	6	41	1	6	4	25
Glenrock PD	18	3	6				9	2	6			1	9
WHP	18	3	7		5		3	2	7	1		1	7
<i>Converse County Totals</i>	137	22	61	9	14	0	31	10	59	2	7	8	52

Location of Alcohol Consumption

<i>Department</i>	<i>Bar Name</i>	<i>Number of Reports</i>
Converse SO	Knotty Pine	1
	Waterhole	1
Douglas PD	Chutes	3
	Douglas Liquor	2
	La Bonte	11
	La Bonte Waterhole	2
	Northgate	8
	Plains	2
	Waterhole	9
Glenrock PD	4 Aces	1
	Knotty Pine	3
	La Bonte	1
WHP	Applebee's	1
	Butch's	1
	Northgate	1
	Paisley Shawl	1

Crook County
April 1, 2006 – September 30, 2006

Numbers by Department

<i>County</i>	<i>Total</i>			<i>Domestic</i>	<i>Resisting</i>		<i>Public</i>	<i>Alcohol</i>	<i>Traffic</i>			<i>Unknown</i>	<i>Ave.</i>
<i>Department</i>	<i>Offenses</i>	<i>Misdemeanor</i>	<i>Felony</i>	<i>Violence</i>	<i>Arrest</i>	<i>Assault</i>	<i>Intoxication</i>	<i>Involved</i>	<i>Crash</i>	<i>Female</i>	<i>Male</i>	<i>Gender</i>	<i>Age</i>
Crook	101	91	10	5	2	5	9	72	5	8	90	1	31.9
Unknown	1	1						1			1		22
Crook SO	32	27	4	3			1	21	2	2	30		32.1
Game & Fish	1	1						1			1		47
Hulett PD	2	2			1	1	1	1			2		34
Moorcroft PD	4	4	1			2		3		1	3		29
State Parks	13	13			1	2	4	12		2	11		27.3
Sundance PD	16	15	1	2			2	11		1	14	1	29.2
WHP	32	28	4				1	22	3	2	28		34.7

Percents by Department

<i>County</i>	<i>Total</i>			<i>Domestic</i>	<i>Resisting</i>		<i>Public</i>	<i>Alcohol</i>	<i>Traffic</i>			<i>Unknown</i>
<i>Department</i>	<i>Offenses</i>	<i>Misdemeanor</i>	<i>Felony</i>	<i>Violence</i>	<i>Arrest</i>	<i>Assault</i>	<i>Intoxication</i>	<i>Involved</i>	<i>Crash</i>	<i>Female</i>	<i>Male</i>	<i>Gender</i>
Crook	101	90.10%	9.90%	4.95%	1.98%	4.95%	8.91%	71.29%	4.95%	7.92%	89.11%	0.99%
Unknown	1	100.00%						100.00%			100.00%	
Crook SO	32	84.38%	12.50%	9.38%			3.13%	65.63%	6.25%	6.25%	93.75%	
Game & Fish	1	100.00%						100.00%			100.00%	
Hulett PD	2	100.00%			50.00%	50.00%	50.00%	50.00%			100.00%	
Moorcroft PD	4	100.00%	25.00%			50.00%		75.00%		25.00%	75.00%	
State Parks	13	100.00%			7.69%	15.38%	30.77%	92.31%		15.38%	84.62%	
Sundance PD	16	93.75%	6.25%	12.50%			12.50%	68.75%		6.25%	87.50%	6.25%
WHP	32	87.50%	12.50%				3.13%	68.75%	9.38%	6.25%	87.50%	

MIP Arrests

County Department	DUI Offenses	MIP Arrests	% MIP to DUI	Average MIP BAC
Crook	37	9	24.32%	0.0710
Unknown	1			
Crook SO	13	3	23.08%	0.0606
Game & Fish	1			
Hulett PD				
Moorcroft PD	2			
State Parks	4	4	100.00%	0.0945
Sundance PD	5	2	40.00%	0.0395
WHP	15			

DUI Arrests

County Department	Total Offenses	DUI Offenses	% DUI Of Total	Ave. BAC	Open Container	Passenger in Vehicle
Crook	101	37	36.63%	0.1425	13	6
Unknown	1	1	100.00%	0.1100	1	1
Crook SO	32	13	40.63%	0.1422	7	3
Game & Fish	1	1	100.00%	0.1700		
Hulett PD	2					
Moorcroft PD	4	2	50.00%	0.1750		
State Parks	13	4	30.77%	0.0945		
Sundance PD	16	5	31.25%	0.0764	2	1
WHP	32	15	46.88%	0.1608	3	1

Underage DUI Arrests

County Department	DUI Offenses	Underage Offenses	% DUI Of Total	Ave. BAC	Open Container	Passenger in Vehicle
Crook	37	4	10.81%	0.2190	2	3
Unknown	1					
Crook SO	13	2	15.38%	0.0560	1	2
Game & Fish	1					
Hulett PD						
Moorcroft PD	2					
State Parks	4					
Sundance PD	5	1	20.00%	0.0300	1	1
WHP	15	1	6.67%	0.0770		

Meth, Drugs and Public Intoxication

County Department	Total Offenses	Meth Involved	Other Drugs Involved	Public Intox.	Pub. Intox. Ave. BAC
Crook	101	4	6	9	0.2160
Unknown	1				
Crook SO	32	2	1	1	
Game & Fish	1				
Hulett PD	2			1	
Moorcroft PD	4				
State Parks	13			4	
Sundance PD	16		1	2	
WHP	32	2	1	1	0.2160

Traffic Crashes

County Department	Traffic Crashes	Alcohol Involved	Wearing Seatbelt	Average BAC
Crook	5	3	2	0.1100
Unknown				
Crook SO	2	1	1	
Game & Fish				
Hulett PD				
Moorcroft PD				
State Parks				
Sundance PD				
WHP	3	2	1	0.1100

Total Offenses-Alcohol Involvement

County Department	Total Offenses	Number Involving Alcohol	Percent of Total Involving Alcohol
Crook	101	72	71.29%
Unknown	1	1	100.00%
Crook SO	32	21	65.63%
Game & Fish	1	1	100.00%
Hulett PD	2	1	50.00%
Moorcroft PD	4	3	75.00%
State Parks	13	12	92.31%
Sundance PD	16	11	68.75%
WHP	32	22	68.75%

Felony Offenses-Alcohol Involvement

County Department	Felony Offenses	Number Involving Alcohol	Percent of Felony Offenses Involving Alcohol
Crook	10		0.00%
Unknown			
Crook SO	4		
Game & Fish			
Hulett PD			
Moorcroft PD	1		
State Parks			
Sundance PD	1		
WHP	4		

Misdemeanor Offenses-Alcohol Involvement

County Department	Misdemeanor Offenses	Number Involving Alcohol	Percent of Misdemeanor Offenses Involving Alcohol
Crook	91	71	78.02%
Unknown	1	1	100.00%
Crook SO	27	20	74.07%
Game & Fish	1	1	100.00%
Hulett PD	2	1	50.00%
Moorcroft PD	4	3	75.00%
State Parks	13	12	92.31%
Sundance PD	15	11	73.33%
WHP	28	22	78.57%

Domestic Violence-Alcohol Involvement

County Department	Domestic Violence Offenses	Number Involving Alcohol	Percent of Domestic Violence Offenses Involving Alcohol
Crook	5	1	20.00%
Unknown			
Crook SO	3	1	33.33%
Game & Fish			
Hulett PD			
Moorcroft PD			
State Parks			
Sundance PD	2		
WHP			

Resisting Arrest-Alcohol Involvement

County Department	Resisting Arrest Offenses	Number Involving Alcohol	Percent of Resisting Arrest Offenses Involving Alcohol
Crook	2	1	50.00%
Unknown			
Crook SO			
Game & Fish			
Hulett PD	1	1	100.00%
Moorcroft PD			
State Parks	1		
Sundance PD			
WHP			

Assault-Alcohol Involvement

County Department	Assault Offenses	Number Involving Alcohol	Percent of Assault Offenses Involving Alcohol
Crook	5	4	80.00%
Unknown			
Crook SO			
Game & Fish			
Hulett PD	1	1	100.00%
Moorcroft PD	2	1	50.00%
State Parks	2	2	100.00%
Sundance PD			
WHP			

Location of Alcohol Consumption and Point of Sale by Department

<i>Department</i>	<i>Alcohol Involved</i>	<i>Location of Consumption</i>						<i>Point of Sale</i>					
		<i>Home</i>	<i>Bar</i>	<i>Party</i>	<i>Car</i>	<i>Other</i>	<i>No Response</i>	<i>Home</i>	<i>Bar</i>	<i>Drive Up</i>	<i>Party</i>	<i>Liquor Store</i>	<i>No Response</i>
Unknown	1												
Crook SO	32	2	6	3	4	1	6	1	6		4	1	9
Game & Fish	1						1				1		
Hulett PD	2		1						1				
Moorcroft PD	4		3						3				
State Parks	13			3		8	1	1	1		2		8
Sundance PD	16		3	2	4		2		3		2		6
WHP	32	3	10	1	4	1	3	4	12		1		5
<i>Crook County Totals</i>	101	5	23	9	12	10	13	6	26		10	1	28

Location of Alcohol Consumption

<i>Department</i>	<i>Bar Name</i>	<i>Number of Reports</i>
Crook SO	Buffalo Jump Saloon	1
	Hoppers	2
Moorcroft PD	Dewey's Place	3
WHP	Dungeons	1
	Eastside Bar	2

Fremont County
April 1, 2006 – September 30, 2006

Numbers by Department

<i>County</i>	<i>Total</i>			<i>Domestic</i>	<i>Resisting</i>		<i>Public</i>	<i>Alcohol</i>	<i>Traffic</i>		<i>Unknown</i>	<i>Ave.</i>	
<i>Department</i>	<i>Offenses</i>	<i>Misdemeanor</i>	<i>Felony</i>	<i>Violence</i>	<i>Arrest</i>	<i>Assault</i>	<i>Intoxication</i>	<i>Involved</i>	<i>Crash</i>	<i>Female</i>	<i>Male</i>	<i>Gender</i>	<i>Age</i>
Fremont	547	488	24	21	24	26	53	474	21	131	404	12	31.38
Freemont SO	149	126	12	6	6	4	4	113	5	27	117	5	30.23
Lander PD	153	139	7	7	3	12	19	132	5	38	112	3	32.36
Other *	6		1			1		5		2	4		35.50
Prob. & Parole	1	1		1		1		1			1		32.00
Reservation PD	6	6		1	1		2	5		4	2		18.80
Riverton PD	187	174	4	5	14	8	26	179	9	53	130	4	30.66
Shoshoni PD	2	2					1	2		1	1		33.00
WHP	43	40		1			1	37	2	6	37		36.88

Percents by Department

<i>County</i>	<i>Total</i>			<i>Domestic</i>	<i>Resisting</i>		<i>Public</i>	<i>Alcohol</i>	<i>Traffic</i>		<i>Unknown</i>	
<i>Department</i>	<i>Offenses</i>	<i>Misdemeanor</i>	<i>Felony</i>	<i>Violence</i>	<i>Arrest</i>	<i>Assault</i>	<i>Intoxication</i>	<i>Involved</i>	<i>Crash</i>	<i>Female</i>	<i>Male</i>	<i>Gender</i>
Fremont	547	89.21%	4.39%	3.84%	4.39%	4.75%	9.69%	86.65%	3.84%	23.95%	73.86%	2.19%
Freemont SO	149	84.56%	8.05%	4.03%	4.03%	2.68%	2.68%	75.84%	3.36%	18.12%	78.52%	3.36%
Lander PD	153	90.85%	4.58%	4.58%	1.96%	7.84%	12.42%	86.27%	3.27%	24.84%	73.20%	1.96%
Other	6		16.67%			16.67%		83.33%		33.33%	66.67%	
Prob. & Parole	1	100.00%		100.00%		100.00%		100.00%			100.00%	
Reservation PD	6	100.00%		16.67%	16.67%		33.33%	83.33%		66.67%	33.33%	
Riverton PD	187	93.05%	2.14%	2.67%	7.49%	4.28%	13.90%	95.72%	4.81%	28.34%	69.52%	2.14%
Shoshoni PD	2	100.00%					50.00%	100.00%		50.00%	50.00%	
WHP	43	93.02%		2.33%			2.33%	86.05%	4.65%	13.95%	86.05%	

* "Other" department includes department reported as: Drug Court (2), ER (1), FBI (1), Rosen (1), Self (1).

MIP Arrests

County Department	DUI Offenses	MIP Arrests	% MIP to DUI	Average MIP BAC
Fremont	236	61	25.85%	0.1404
Freemont SO	57	6	10.53%	0.1222
Lander PD	68	14	20.59%	0.1753
Other				
Prob. & Parole	1			
Reservation PD	2	2	100.00%	0.1310
Riverton PD	78	38	48.72%	0.1290
Shoshoni PD	1			
WHP	30	1	3.33%	0.2120

DUI Arrests

County Department	Total Offenses	DUI Offenses	% DUI Of Total	Ave. BAC	Open Container	Passenger in Vehicle
Fremont	547	236	43.14%	0.1691	22	11
Freemont SO	149	57	38.26%	0.1450	5	3
Lander PD	153	68	44.44%	0.1717	4	1
Other	6					
Prob. & Parole	1	1	100.00%	0.1610		
Reservation PD	6	2	33.33%	0.2700		
Riverton PD	187	78	41.71%	0.1902	10	6
Shoshoni PD	2	1	50.00%	0.1000	1	1
WHP	43	30	69.77%	0.1538	2	

Underage DUI Arrests

County Department	DUI Offenses	Underage Offenses	% DUI Of Total	Ave. BAC	Open Container	Passenger in Vehicle
Fremont	236	24	10.17%	0.1574	1	1
Freemont SO	57	5	8.77%	0.1390	1	1
Lander PD	68	11	16.18%	0.1673		
Other						
Prob. & Parole	1					
Reservation PD	2	1	50.00%	0.2700		
Riverton PD	78	5	6.41%	0.1428		
Shoshoni PD	1					
WHP	30	2	6.67%	0.1290		

Meth, Drugs and Public Intoxication

County Department	Total Offenses	Meth Involved	Other Drugs Involved	Public Intox.	Pub. Intox. Ave. BAC
Fremont	547	5	22	53	0.2098
Freemont SO	149		7	4	0.2267
Lander PD	153	2	7	19	0.2084
Other	6	1			
Prob. & Parole	1				
Reservation PD	6	1		2	0.1590
Riverton PD	187	1	7	26	0.2293
Shoshoni PD	2			1	0.0300
WHP	43		1	1	

Traffic Crashes

County Department	Traffic Crashes	Alcohol Involved	Wearing Seatbelt	Average BAC
Fremont	21	21	1	0.1731
Freemont SO	5	5		0.1467
Lander PD	5	5		0.0990
Other				
Prob. & Parole				
Reservation PD				
Riverton PD	9	9	1	0.2137
Shoshoni PD				
WHP	2	2		0.1450

Total Offenses-Alcohol Involvement

County Department	Total Offenses	Number Involving Alcohol	Percent of Total Involving Alcohol
Fremont	547	474	86.65%
Freemont SO	149	113	75.84%
Lander PD	153	132	86.27%
Other	6	5	83.33%
Prob. & Parole	1	1	100.00%
Reservation PD	6	5	83.33%
Riverton PD	187	179	95.72%
Shoshoni PD	2	2	100.00%
WHP	43	37	86.05%

Felony Offenses-Alcohol Involvement

County Department	Felony Offenses	Number Involving Alcohol	Percent of Felony Offenses Involving Alcohol
Fremont	24	14	58.33%
Freemont SO	12	6	50.00%
Lander PD	7	3	42.86%
Other	1	1	100.00%
Prob. & Parole			
Reservation PD			
Riverton PD	4	4	100.00%
Shoshoni PD			
WHP			

Misdemeanor Offenses-Alcohol Involvement

County Department	Misdemeanor Offenses	Number Involving Alcohol	Percent of Misdemeanor Offenses Involving Alcohol
Fremont	488	431	88.32%
Freemont SO	126	99	78.57%
Lander PD	139	122	87.77%
Other			
Prob. & Parole	1	1	100.00%
Reservation PD	6	5	83.33%
Riverton PD	174	168	96.55%
Shoshoni PD	2	2	100.00%
WHP	40	34	85.00%

Domestic Violence-Alcohol Involvement

County Department	Domestic Violence Offenses	Number Involving Alcohol	Percent of Domestic Violence Offenses Involving Alcohol
Fremont	21	15	71.43%
Freemont SO	6	2	33.33%
Lander PD	7	6	85.71%
Other			
Prob. & Parole	1	1	100.00%
Reservation PD	1	1	100.00%
Riverton PD	5	5	100.00%
Shoshoni PD			
WHP	1		

Resisting Arrest-Alcohol Involvement

County Department	Resisting Arrest Offenses	Number Involving Alcohol	Percent of Resisting Arrest Offenses Involving Alcohol
Fremont	24	23	95.83%
Freemont SO	6	6	100.00%
Lander PD	3	2	66.67%
Other			
Prob. & Parole			
Reservation PD	1	1	100.00%
Riverton PD	14	14	100.00%
Shoshoni PD			
WHP			

Assault-Alcohol Involvement

County Department	Assault Offenses	Number Involving Alcohol	Percent of Assault Offenses Involving Alcohol
Fremont	26	22	84.62%
Freemont SO	4	3	75.00%
Lander PD	12	9	75.00%
Other	1	1	100.00%
Prob. & Parole	1	1	100.00%
Reservation PD			
Riverton PD	8	8	100.00%
Shoshoni PD			
WHP			

Location of Alcohol Consumption and Point of Sale by Department

<i>Department</i>	<i>Location of Consumption</i>							<i>Point of Sale</i>					
	<i>Alcohol Involved</i>	<i>Home</i>	<i>Bar</i>	<i>Party</i>	<i>Car</i>	<i>Other</i>	<i>No Response</i>	<i>Home</i>	<i>Bar</i>	<i>Drive Up</i>	<i>Party</i>	<i>Liquor Store</i>	<i>No Response</i>
Freemont SO	113	12	32	9	15	6	40	10	30		6	5	62
Lander PD	132	33	21	14	16	3	45	11	22	3	4	14	78
Other	5					2	3						5
Prob. & Parole	1	1						1					
Reservation PD	5	2				1	2	2					3
Riverton PD	179	26	30	12	12	20	75	19	30	1	7	11	107
Shoshoni PD	2		1				1		1				1
WHP	37	6	11	5	8	1	6	3	11		1	2	20
<i>Freemont County Totals</i>	474												

Location of Alcohol Consumption

<i>Department</i>	<i>Bar Name</i>	<i>Number of Reports</i>	<i>Department</i>	<i>Bar Name</i>	<i>Number of Reports</i>		
Freemont SO	Club Impluse	1	Riverton PD	Cedar	1		
	Lucky 5	1		Club Impluse	4		
	Outlaw	3		Hilltop	1		
	Ram's Horn	5		Livestock	2		
	Rezer Ride	2		Ralph's Lounge	3		
	River City	1		River City	2		
	Roadhouse	1		WHP	Bic's Bait Shop	1	
	Rocky Mountain	1			Rezer Ride	1	
	Rustic Pine	1			River City	1	
	Thunderbird	1			Roadhouse	1	
	Time Out	1			Rocky Mountain	1	
	Lander PD	B&B			1	Sady's	2
		Lander Bar			8		
		Pizza Hut			1		
Sady's		1					
Sandford's		1					
Union Bar		1					
Vicki's		3					

***Fremont County Crisis Center
April 1, 2006 – September 30, 2006***

Numbers by Department

<i>County Department</i>	<i>Total Offenses</i>	<i>Misdemeanor</i>	<i>Felony</i>	<i>Domestic Violence</i>	<i>Resisting Arrest</i>	<i>Assault</i>	<i>Public Intoxication</i>	<i>Alcohol Involved</i>	<i>Traffic Crash</i>	<i>Female</i>	<i>Male</i>	<i>Unknown Gender</i>	<i>Ave. Age</i>
Fremont	1092	888	0	5	2	1	875	1066	4	214	877	1	37.95
Fremont SO	87	86		1			80	83		25	62		33.99
Other	220	24					32	204	1	24	196		38.97
Reservation PD	14	13					11	13		6	8		39.07
Riverton PD	768	762		4	2	1	750	763	3	158	609	1	38.11
Shoshoni PD	1	1					1	1			1		33.00
WHP	2	2					1	2		1	1		20.00

Percents by Department

<i>County Department</i>	<i>Total Offenses</i>	<i>Misdemeanor</i>	<i>Felony</i>	<i>Domestic Violence</i>	<i>Resisting Arrest</i>	<i>Assault</i>	<i>Public Intoxication</i>	<i>Alcohol Involved</i>	<i>Traffic Crash</i>	<i>Female</i>	<i>Male</i>	<i>Unknown Gender</i>
Fremont	1092	81.32%	0.00%	0.46%	0.18%	0.09%	80.13%	97.62%	0.37%	19.60%	80.31%	0.09%
Fremont SO	87	98.85%		1.15%			91.95%	95.40%		28.74%	71.26%	
Other	220	10.91%					14.55%	92.73%	00.45%	10.91%	89.09%	
Reservation PD	14	92.86%					78.57%	92.86%		42.86%	57.14%	
Riverton PD	768	99.22%		0.52%	00.26%	00.13%	97.68%	99.35%	00.39%	20.57%	79.30%	00.13%
Shoshoni PD	1	100.00%					100.00%	100.00%			100.00%	
WHP	2	100.00%					50.00%	100.00%		50.00%	50.00%	

* "Other" department includes department reported as: Blank (20), Crow Agency (2), DFS (1), Drug Court (6), ER (50), Family (5), Friend (2), Other (1), Probation & Parole (1), Self (129), Wife (1), WRPD (1).

MIP Arrests

<i>County</i>	<i>DUI</i>	<i>MIP</i>	<i>% MIP</i>	<i>Average</i>
<i>Department</i>	<i>Offenses</i>	<i>Arrests</i>	<i>to DUI</i>	<i>MIP BAC</i>
Fremont	9	17	188.89%	0.1682
Fremont SO	1	2	200.00%	0.1650
Other		1		0.1200
Reservation PD				
Riverton PD	7	13	185.71%	0.1754
Shoshoni PD				
WHP	1	1	100.00%	0.1300

DUI Arrests

<i>County</i>	<i>Total</i>	<i>DUI</i>	<i>% DUI</i>	<i>Ave.</i>	<i>Open</i>	<i>Passenger</i>
<i>Department</i>	<i>Offenses</i>	<i>Offenses</i>	<i>Of Total</i>	<i>BAC</i>	<i>Container</i>	<i>in Vehicle</i>
Fremont	1092	9	0.82%	0.1489	2	0
Fremont SO	87	1	1.15%	0.1400		
Other	220					
Reservation PD	14					
Riverton PD	768	7	0.91%	0.1487	1	
Shoshoni PD	1					
WHP	2	1	50.00%	0.1500	1	

Underage DUI Arrests

<i>County</i>	<i>DUI</i>	<i>Underage</i>	<i>% DUI</i>	<i>Ave.</i>	<i>Open</i>	<i>Passenger</i>
<i>Department</i>	<i>Offenses</i>	<i>Offenses</i>	<i>Of Total</i>	<i>BAC</i>	<i>Container</i>	<i>in Vehicle</i>
Fremont	9	0	0.00%			
Fremont SO	1					
Other						
Reservation PD						
Riverton PD	7					
Shoshoni PD						
WHP	1					

Meth, Drugs and Public Intoxication

<i>County</i>	<i>Total</i>	<i>Meth</i>	<i>Other</i>	<i>Public</i>	<i>Pub.</i>
<i>Department</i>	<i>Offenses</i>	<i>Involved</i>	<i>Drugs</i>	<i>Intox.</i>	<i>Intox.</i>
			<i>Involved</i>		<i>Ave. BAC</i>
Fremont	1092	6	96	875	0.2449
Fremont SO	87			80	0.2140
Other	220	5	4	32	0.2160
Reservation PD	14			11	0.2110
Riverton PD	768	1	5	750	0.2506
Shoshoni PD	1			1	0.1800
WHP	2			1	0.1300

Traffic Crashes

<i>County</i>	<i>Traffic</i>	<i>Alcohol</i>	<i>Wearing</i>	<i>Average</i>
<i>Department</i>	<i>Crashes</i>	<i>Involved</i>	<i>Seatbelt</i>	<i>BAC</i>
Fremont	4	4	0	0.0700
Fremont SO				
Other	1	1		
Reservation PD				
Riverton PD	3	3		0.0700
Shoshoni PD				
WHP				

Total Offenses-Alcohol Involvement

County Department	Total Offenses	Number Involving Alcohol	Percent of Total Involving Alcohol
Fremont	1092	1066	97.62%
Fremont SO	87	83	95.40%
Other	220	204	92.73%
Reservation PD	14	13	92.86%
Riverton PD	768	763	99.35%
Shoshoni PD	1	1	100.00%
WHP	2	2	100.00%

Domestic Violence-Alcohol Involvement

County Department	Domestic Violence Offenses	Number Involving Alcohol	Percent of Domestic Violence Offenses Involving Alcohol
Fremont	5	4	80.00%
Fremont SO	1		0.00%
Other			
Reservation PD			
Riverton PD	4	4	100.00%
Shoshoni PD			
WHP			

Felony Offenses-Alcohol Involvement

County Department	Felony Offenses	Number Involving Alcohol	Percent of Felony Offenses Involving Alcohol
Fremont	0	0	0.00%
Fremont SO			
Other			
Reservation PD			
Riverton PD			
Shoshoni PD			
WHP			

Resisting Arrest-Alcohol Involvement

County Department	Resisting Arrest Offenses	Number Involving Alcohol	Percent of Resisting Arrest Offenses Involving Alcohol
Fremont	2	2	100.00%
Fremont SO			
Other			
Reservation PD			
Riverton PD	2	2	100.00%
Shoshoni PD			
WHP			

Misdemeanor Offenses-Alcohol Involvement

County Department	Misdemeanor Offenses	Number Involving Alcohol	Percent of Misdemeanor Offenses Involving Alcohol
Fremont	888	878	98.87%
Fremont SO	86	83	96.51%
Other	24	23	95.83%
Reservation PD	13	12	92.31%
Riverton PD	762	757	99.34%
Shoshoni PD	1	1	100.00%
WHP	2	2	100.00%

Assault-Alcohol Involvement

County Department	Assault Offenses	Number Involving Alcohol	Percent of Assault Offenses Involving Alcohol
Fremont	1	1	100.00%
Fremont SO			
Other			
Reservation PD			
Riverton PD	1	1	100.00%
Shoshoni PD			
WHP			

Location of Alcohol Consumption and Point of Sale by Department

<i>Department</i>	<i>Alcohol Involved</i>	<i>Location of Consumption</i>						<i>Point of Sale</i>					
		<i>Home</i>	<i>Bar</i>	<i>Party</i>	<i>Car</i>	<i>Other</i>	<i>No Response</i>	<i>Home</i>	<i>Bar</i>	<i>Drive Up</i>	<i>Party</i>	<i>Liquor Store</i>	<i>No Response</i>
Fremont SO	83	10	5	4	3	15	46	2	5	1	4	8	63
Other	204	24		9		38	133	5		6	6	12	175
Reservation PD	13	2				2	9	1					12
Riverton PD	763	29	21	24	19	219	451	11	20	15	21	56	640
Shoshoni PD	1						1						1
WHP	2	1					1			1			1
<i>Fremont County Crisis Center Totals</i>	1066	66	26	37	22	274	641	19	25	23	31	76	892

Goshen County
April 1, 2006 – September 30, 2006

Numbers by Department

<i>County Department</i>	<i>Total Offenses</i>	<i>Misdemeanor</i>	<i>Felony</i>	<i>Domestic Violence</i>	<i>Resisting Arrest</i>	<i>Assault</i>	<i>Public Intoxication</i>	<i>Alcohol Involved</i>	<i>Traffic Crash</i>	<i>Female</i>	<i>Male</i>	<i>Unknown Gender</i>	<i>Ave. Age</i>
Goshen	135	109	24	11	5	8	8	84	5	23	105	7	32.99
Ft. Laramie PD	4	3	1					3		2	2		30.7
Goshen SO	45	34	12	6	2	1		25	2	7	37	1	40.5
Lingle PD	2	2	1							1	1		
Torrington PD	78	64	10	5	3	7	8	51	2	12	60	6	34.06
WHP	6	6						5	1	1	5		41

Percents by Department

<i>County Department</i>	<i>Total Offenses</i>	<i>Misdemeanor</i>	<i>Felony</i>	<i>Domestic Violence</i>	<i>Resisting Arrest</i>	<i>Assault</i>	<i>Public Intoxication</i>	<i>Alcohol Involved</i>	<i>Traffic Crash</i>	<i>Female</i>	<i>Male</i>	<i>Unknown Gender</i>
Goshen	137	80.74%	17.78%	8.15%	3.70%	5.93%	5.93%	62.22%	3.70%	17.04%	77.78%	5.19%
Ft. Laramie PD	4	75.00%	25.00%					75.00%		50.00%	50.00%	
Goshen SO	45	75.56%	26.67%	13.33%	4.44%	2.22%		55.56%	4.44%	15.56%	82.22%	2.22%
Lingle PD	2	100.00%	50.00%							50.00%	50.00%	
Torrington PD	78	82.05%	12.82%	6.41%	3.85%	8.97%	10.26%	65.38%	2.56%	15.38%	76.92%	7.69%
WHP	6	100.00%						83.33%	16.67%	16.67%	83.33%	

MIP Arrests

<i>County Department</i>	<i>DUI Offenses</i>	<i>MIP Arrests</i>	<i>% MIP to DUI</i>	<i>Average MIP BAC</i>
Goshen	25	2	8.00%	0.1150
Ft. Laramie PD	1			
Goshen SO	5	1	20.00%	0.1000
Lingle PD				
Torrington PD	16	1	6.25%	0.1300
WHP	3			

DUI Arrests

<i>County Department</i>	<i>Total Offenses</i>	<i>DUI Offenses</i>	<i>% DUI Of Total</i>	<i>Average BAC</i>	<i>Open Container</i>	<i>Passenger in Vehicle</i>
Goshen	135	25	18.52%	0.1554	6	1
Ft. Laramie PD	4	1	25.00%	0.1590		
Goshen SO	45	5	8.89%	0.1662	2	
Lingle PD	2					
Torrington PD	78	16	20.51%	0.1521	3	1
WHP	6	3	50.00%	0.1533	1	

Underage DUI Arrests

<i>County Department</i>	<i>DUI Offenses</i>	<i>Underage Offenses</i>	<i>% DUI Of Total</i>	<i>Average BAC</i>	<i>Open Container</i>	<i>Passenger in Vehicle</i>
Goshen	25	0	0.00%			
Ft. Laramie PD	1					
Goshen SO	5					
Lingle PD						
Torrington PD	16					
WHP	3					

Meth, Drugs and Public Intoxication

<i>County Department</i>	<i>Total Offenses</i>	<i>Meth Involved</i>	<i>Other Drugs Involved</i>	<i>Public Intox.</i>	<i>Pub. Intox. Average BAC</i>
Goshen	135	6	13	8	
Ft. Laramie PD	4	1			
Goshen SO	45	3	3		
Lingle PD	2	1			
Torrington PD	78	1	10	8	
WHP	6				

Note: No Public Intoxication BACs reported.

Traffic Crashes

<i>County Department</i>	<i>Traffic Crashes</i>	<i>Alcohol Involved</i>	<i>Wearing Seatbelt</i>	<i>Average BAC</i>
Goshen	5	5	3	0.2505
Ft. Laramie PD				
Goshen SO	2	2	1	0.1600
Lingle PD				
Torrington PD	2	2	1	0.3410
WHP	1	1	1	

Total Offenses-Alcohol Involvement

<i>County Department</i>	<i>Total Offenses</i>	<i>Number Involving Alcohol</i>	<i>Percent of Total Involving Alcohol</i>
Goshen	135	84	62.22%
Ft. Laramie PD	4	3	75.00%
Goshen SO	45	25	55.56%
Lingle PD	2		
Torrington PD	78	51	65.38%
WHP	6	5	83.33%

Domestic Violence-Alcohol Involvement

<i>County Department</i>	<i>Domestic Violence Offenses</i>	<i>Number Involving Alcohol</i>	<i>Percent of Domestic Violence Offenses Involving Alcohol</i>
Goshen	11	8	72.73%
Ft. Laramie PD			
Goshen SO	6	5	83.33%
Lingle PD			
Torrington PD	5	3	60.00%
WHP			

Felony Offenses-Alcohol Involvement

<i>County Department</i>	<i>Felony Offenses</i>	<i>Number Involving Alcohol</i>	<i>Percent of Felony Offenses Involving Alcohol</i>
Goshen	24	4	16.67%
Ft. Laramie PD	1		
Goshen SO	12	1	8.33%
Lingle PD	1		
Torrington PD	10	3	30.00%
WHP			

Resisting Arrest-Alcohol Involvement

<i>County Department</i>	<i>Resisting Arrest Offenses</i>	<i>Number Involving Alcohol</i>	<i>Percent of Resisting Arrest Offenses Involving Alcohol</i>
Goshen	5	3	60.00%
Ft. Laramie PD			
Goshen SO	2	1	50.00%
Lingle PD			
Torrington PD	3	2	66.67%
WHP			

Misdemeanor Offenses-Alcohol Involvement

<i>County Department</i>	<i>Misdemeanor Offenses</i>	<i>Number Involving Alcohol</i>	<i>Percent of Misdemeanor Offenses Involving Alcohol</i>
Goshen	109	76	69.72%
Ft. Laramie PD	3	3	100.00%
Goshen SO	34	24	70.59%
Lingle PD	2		
Torrington PD	64	44	68.75%
WHP	6	5	83.33%

Assault-Alcohol Involvement

<i>County Department</i>	<i>Assault Offenses</i>	<i>Number Involving Alcohol</i>	<i>Percent of Assault Offenses Involving Alcohol</i>
Goshen	8	6	75.00%
Ft. Laramie PD			
Goshen SO	1		
Lingle PD			
Torrington PD	7	6	85.71%
WHP			

Location of Alcohol Consumption and Point of Sale by Department

<i>Department</i>	<i>Alcohol Involved</i>	<i>Location of Consumption</i>						<i>Point of Sale</i>					
		<i>Home</i>	<i>Bar</i>	<i>Party</i>	<i>Car</i>	<i>Other</i>	<i>No Response</i>	<i>Home</i>	<i>Bar</i>	<i>Drive Up</i>	<i>Party</i>	<i>Liquor Store</i>	<i>No Response</i>
Ft. Laramie PD	3		2		1			1	2				
Goshen SO	25	5	10	1		2	7	2	10	1	1	3	8
Lingle PD													
Torrington PD	51	11	14		5	2	18	7	14	1		1	27
WHP	5	3	2					1	2			2	
<i>Goshen County Totals</i>	84	19	28	1	9	4	25	11	28	2	1	6	35

Location of Alcohol Consumption

<i>Department</i>	<i>Bar Name</i>	<i>Number of Reports</i>
Ft. Laramie PD	Red Line	2
Goshen SO	Broncos	2
	Red Line	1
	State Line	3
Torrington PD	Broncos	7
	Main Street Saloon	1
	State Line	1
WHP	Country Cottage	1
	Red Line	1

Hot Springs County
April 1, 2006 – September 30, 2006

Numbers by Department

<i>County</i>	<i>Total</i>			<i>Domestic</i>	<i>Resisting</i>		<i>Public</i>	<i>Alcohol</i>	<i>Traffic</i>			<i>Unknown</i>	<i>Ave.</i>
<i>Department</i>	<i>Offenses</i>	<i>Misdemeanor</i>	<i>Felony</i>	<i>Violence</i>	<i>Arrest</i>	<i>Assault</i>	<i>Intoxication</i>	<i>Involved</i>	<i>Crash</i>	<i>Female</i>	<i>Male</i>	<i>Gender</i>	<i>Age</i>
Hot Springs	85	76	3	2	2	3	13	74	3	17	66	2	31.48
Hot Springs SO	9	8	1					7	1	1	8		28.38
Thermopolis PD	66	58	2	2	2	3	12	58	1	15	49	2	31.88
WHP	10	10					1	9	1	1	9		31.83

Percents by Department

<i>County</i>	<i>Total</i>			<i>Domestic</i>	<i>Resisting</i>		<i>Public</i>	<i>Alcohol</i>	<i>Traffic</i>			<i>Unknown</i>
<i>Department</i>	<i>Offenses</i>	<i>Misdemeanor</i>	<i>Felony</i>	<i>Violence</i>	<i>Arrest</i>	<i>Assault</i>	<i>Intoxication</i>	<i>Involved</i>	<i>Crash</i>	<i>Female</i>	<i>Male</i>	<i>Gender</i>
Hot Springs	85	89.41%	3.53%	2.35%	2.35%	3.53%	15.29%	87.06%	3.53%	20.00%	77.65%	2.35%
Hot Springs SO	9	88.89%	11.11%					77.78%	11.11%	11.11%	88.89%	
Thermopolis PD	66	87.88%	3.03%	3.03%	3.03%	4.55%	18.18%	87.88%	1.52%	22.73%	74.24%	3.03%
WHP	10	100.00%					10.00%	90.00%	10.00%	10.00%	90.00%	

MIP Arrests

<i>County</i>	<i>DUI</i>	<i>MIP</i>	<i>% MIP to</i>	<i>Average</i>
<i>Department</i>	<i>Offenses</i>	<i>Arrests</i>	<i>DUI</i>	<i>MIP BAC</i>
Hot Springs	35	5	14.29%	0.1048
Hot Springs SO	2	1	50.00%	0.1000
Thermopolis PD	28	3	10.71%	0.1280
WHP	7	1	14.29%	0.0400

DUI Arrests

<i>County</i>	<i>Total</i>	<i>DUI</i>	<i>% DUI</i>	<i>Average</i>	<i>Open</i>	<i>Passenger</i>
<i>Department</i>	<i>Offenses</i>	<i>Offenses</i>	<i>Of Total</i>	<i>BAC</i>	<i>Container</i>	<i>in Vehicle</i>
Hot Springs	85	35	41.18%	0.1336	11	5
Hot Springs SO	9	2	22.22%	0.1745		
Thermopolis PD	66	28	42.42%	0.1392	9	5
WHP	10	7	70.00%	0.0999	2	

Underage DUI Arrests

<i>County</i>	<i>DUI</i>	<i>Underage</i>	<i>% DUI</i>	<i>Average</i>	<i>Open</i>	<i>Passenger</i>
<i>Department</i>	<i>Offenses</i>	<i>Offenses</i>	<i>Of Total</i>	<i>BAC</i>	<i>Container</i>	<i>in Vehicle</i>
Hot Springs	35	6	17.14%	0.1040	3	1
Hot Springs SO	2					
Thermopolis PD	28	5	17.86%	0.1168	3	1
WHP	7	1	14.29%	0.0400		

Meth, Drugs and Public Intoxication

<i>County</i>	<i>Total</i>	<i>Meth</i>	<i>Other</i>	<i>Public</i>	<i>Pub. Intox.</i>
<i>Department</i>	<i>Offenses</i>	<i>Involved</i>	<i>Drugs</i>	<i>Intox.</i>	<i>Average</i>
			<i>Involved</i>		<i>BAC</i>
Hot Springs	85	3	11	13	0.2060
Hot Springs SO	9				
Thermopolis PD	66	3	10	12	0.2060
WHP	10		1	1	

Traffic Crashes

<i>County</i>	<i>Traffic</i>	<i>Alcohol</i>	<i>Wearing</i>	<i>Average</i>
<i>Department</i>	<i>Crashes</i>	<i>Involved</i>	<i>Seatbelt</i>	<i>BAC</i>
Hot Springs	3	3	1	0.1400
Hot Springs SO	1	1		
Thermopolis PD	1	1		0.1700
WHP	1	1	1	0.1100

Total Offenses-Alcohol Involvement

<i>County Department</i>	<i>Total Offenses</i>	<i>Number Involving Alcohol</i>	<i>Percent of Total Involving Alcohol</i>
Hot Springs	85	74	87.06%
Hot Springs SO	9	7	77.78%
Thermopolis PD	66	58	87.88%
WHP	10	9	90.00%

Felony Offenses-Alcohol Involvement

<i>County Department</i>	<i>Felony Offenses</i>	<i>Number Involving Alcohol</i>	<i>Percent of Felony Offenses Involving Alcohol</i>
Hot Springs	3	2	66.67%
Hot Springs SO	1		
Thermopolis PD	2	2	100.00%
WHP			

Misdemeanor Offenses-Alcohol Involvement

<i>County Department</i>	<i>Misdemeanor Offenses</i>	<i>Number Involving Alcohol</i>	<i>Percent of Misdemeanor Offenses Involving Alcohol</i>
Hot Springs	76	67	88.16%
Hot Springs SO	8	7	87.50%
Thermopolis PD	58	51	87.93%
WHP	10	9	90.00%

Domestic Violence-Alcohol Involvement

<i>County Department</i>	<i>Domestic Violence Offenses</i>	<i>Number Involving Alcohol</i>	<i>Percent of Domestic Violence Offenses Involving Alcohol</i>
Hot Springs	2	1	50.00%
Hot Springs SO			
Thermopolis PD	2	1	50.00%
WHP			

Resisting Arrest-Alcohol Involvement

<i>County Department</i>	<i>Resisting Arrest Offenses</i>	<i>Number Involving Alcohol</i>	<i>Percent of Resisting Arrest Offenses Involving Alcohol</i>
Hot Springs	2	2	100.00%
Hot Springs SO			
Thermopolis PD	2	2	100.00%
WHP			

Assault-Alcohol Involvement

<i>County Department</i>	<i>Assault Offenses</i>	<i>Number Involving Alcohol</i>	<i>Percent of Assault Offenses Involving Alcohol</i>
Hot Springs	3	3	100.00%
Hot Springs SO			
Thermopolis PD	3	3	100.00%
WHP			

Location of Alcohol Consumption and Point of Sale by Department

<i>Department</i>	<i>Alcohol Involved</i>	<i>Location of Consumption</i>						<i>Point of Sale</i>					
		<i>Home</i>	<i>Bar</i>	<i>Party</i>	<i>Car</i>	<i>Other</i>	<i>No Response</i>	<i>Home</i>	<i>Bar</i>	<i>Drive Up</i>	<i>Party</i>	<i>Liquor Store</i>	<i>No Response</i>
Hot Springs SO	7	1		2	2	2			2	1		4	
Thermopolis PD	58	15	25	1	7	2	8	8	24	7	1	6	12
WHP	9	1	3		1	3	1	1	3			1	4
<i>Hot Springs County Totals</i>	74	17	28	3	10	7	9	9	29	8	1	11	16

Location of Alcohol Consumption

<i>Department</i>	<i>Bar Name</i>	<i>Number of Reports</i>
Thermopolis PD	Holiday Inn	1
	Mac's	12
	One Eyed Jack's	3
	Safari Club	2
	Shorty's	2
WHP	Holiday Inn	1
	Mac's	1
	One Eyed Jack's	1

Johnson County
April 1, 2006 – September 30, 2006

Numbers by Department

<i>County</i> <i>Department</i>	<i>Total</i> <i>Offenses</i>	<i>Misdemeanor</i>	<i>Felony</i>	<i>Domestic</i> <i>Violence</i>	<i>Resisting</i> <i>Arrest</i>	<i>Assault</i>	<i>Public</i> <i>Intoxication</i>	<i>Alcohol</i> <i>Involved</i>	<i>Traffic</i> <i>Crash</i>	<i>Female</i>	<i>Male</i>	<i>Unknown</i> <i>Gender</i>	<i>Ave.</i> <i>Age</i>
Johnson	154	134	22	6	5	3	14	103	16	16	138		33.36
Buffalo PD	55	49	7	3	3	2	6	39	2	4	51		31.98
DCI	7		7							2	5		30.71
Johnson SO	70	69	2	3	2	1	8	51	4	6	64		34.56
Kaycee PD	1	1									1		30.00
Probation & Parole	1	1									1		37.00
US Marshalls	1		1								1		36.00
WHP	19	14	5					13	10	4	15		33.79

Percents by Department

<i>County</i> <i>Department</i>	<i>Total</i> <i>Offenses</i>	<i>Misdemeanor</i>	<i>Felony</i>	<i>Domestic</i> <i>Violence</i>	<i>Resisting</i> <i>Arrest</i>	<i>Assault</i>	<i>Public</i> <i>Intoxication</i>	<i>Alcohol</i> <i>Involved</i>	<i>Traffic</i> <i>Crash</i>	<i>Female</i>	<i>Male</i>	<i>Unknown</i> <i>Gender</i>
Johnson	154	87.01%	14.29%	3.90%	3.25%	1.95%	9.09%	66.88%	10.39%	10.39%	89.61%	
Buffalo PD	55	89.09%	12.73%	5.45%	5.45%	3.64%	10.91%	70.91%	3.64%	7.27%	92.73%	
DCI	7		100.00%							28.57%	71.43%	
Johnson SO	70	98.57%	2.86%	4.29%	2.86%	1.43%	11.43%	72.86%	5.71%	8.57%	91.43%	
Kaycee PD	1	100.00%									100.00%	
Probation & Parole	1	100.00%									100.00%	
US Marshalls	1		100.00%								100.00%	
WHP	19	73.68%	26.32%					68.42%	52.63%	21.05%	78.95%	

MIP Arrests

County Department	DUI Offenses	MIP Arrests	% MIP to DUI	Average MIP BAC
Johnson	53	3	5.66%	0.2000
Buffalo PD	22	2	9.09%	0.1350
DCI				
Johnson SO	24	1	4.17%	0.3300
Kaycee PD				
Probation & Parole				
US Marshalls				
WHP	7			

DUI Arrests

County Department	Total Offenses	DUI Offenses	% DUI Of Total	Ave. BAC	Open Container	Passenger in Vehicle
Johnson	154	53	34.42%	0.1726	8	4
Buffalo PD	55	22	40.00%	0.1729	3	1
DCI	7					
Johnson SO	70	24	34.29%	0.1681	4	2
Kaycee PD	1					
Probation & Parole	1					
US Marshalls	1					
WHP	19	7	36.84%	0.1873	1	1

Underage DUI Arrests

County Department	DUI Offenses	Underage Offenses	% DUI Of Total	Ave. BAC	Open Container	Passenger in Vehicle
Johnson	53	3	5.66%	0.1500	1	1
Buffalo PD	22	2	9.09%	0.1300	1	1
DCI						
Johnson SO	24	1	4.17%	0.1900		
Kaycee PD						
Probation & Parole						
US Marshalls						
WHP	7					

Meth, Drugs and Public Intoxication

County Department	Total Offenses	Meth Involved	Other Drugs Involved	Public Intox.	Pub. Intox. Ave. BAC
Johnson	154	14	17	14	0.3030
Buffalo PD	55	1	8	6	0.3030
DCI	7	6	1		
Johnson SO	70	2	7	8	
Kaycee PD	1				
Probation & Parole	1				
US Marshalls	1	1			
WHP	19	4	1		

Traffic Crashes

County Department	Traffic Crashes	Alcohol Involved	Wearing Seatbelt	Average BAC
Johnson	16	11	2	0.1328
Buffalo PD	2	2		0.1250
DCI				
Johnson SO	4	3		0.1340
Kaycee PD				
Probation & Parole				
US Marshalls				
WHP	10	6	2	0.1400

Total Offenses-Alcohol Involvement

County Department	Total Offenses	Number Involving Alcohol	Percent of Total Involving Alcohol
Johnson	154	103	66.88%
Buffalo PD	55	39	70.91%
DCI	7		
Johnson SO	70	51	72.86%
Kaycee PD	1		
Probation & Parole	1		
US Marshalls	1		
WHP	19	13	68.42%

Felony Offenses-Alcohol Involvement

County Department	Felony Offenses	Number Involving Alcohol	Percent of Felony Offenses Involving Alcohol
Johnson	22	0	0.00%
Buffalo PD	7		
DCI	7		
Johnson SO	2		
Kaycee PD			
Probation & Parole			
US Marshalls	1		
WHP	5		

Misdemeanor Offenses-Alcohol Involvement

County Department	Misdemeanor Offenses	Number Involving Alcohol	Percent of Misdemeanor Offenses Involving Alcohol
Johnson	134	53	39.55%
Buffalo PD	49	22	44.90%
DCI			
Johnson SO	69	24	34.78%
Kaycee PD	1		
Probation & Parole	1		
US Marshalls			
WHP	14	7	50.00%

Domestic Violence-Alcohol Involvement

County Department	Domestic Violence Offenses	Number Involving Alcohol	Percent of Domestic Violence Offenses Involving Alcohol
Johnson	6	1	16.67%
Buffalo PD	3	1	33.33%
DCI			
Johnson SO	3		
Kaycee PD			
Probation & Parole			
US Marshalls			
WHP			

Resisting Arrest-Alcohol Involvement

County Department	Resisting Arrest Offenses	Number Involving Alcohol	Percent of Resisting Arrest Offenses Involving Alcohol
Johnson	5	0	0.00%
Buffalo PD	3		
DCI			
Johnson SO	2		
Kaycee PD			
Probation & Parole			
US Marshalls			
WHP			

Assault-Alcohol Involvement

County Department	Assault Offenses	Number Involving Alcohol	Percent of Assault Offenses Involving Alcohol
Johnson	3	1	33.33%
Buffalo PD	2	1	50.00%
DCI			
Johnson SO	1		
Kaycee PD			
Probation & Parole			
US Marshalls			
WHP			

Location of Alcohol Consumption and Point of Sale by Department

<i>Department</i>	<i>Location of Consumption</i>						<i>Point of Sale</i>						
	<i>Alcohol Involved</i>	<i>Home</i>	<i>Bar</i>	<i>Party</i>	<i>Car</i>	<i>Other</i>	<i>No Response</i>	<i>Home</i>	<i>Bar</i>	<i>Drive Up</i>	<i>Party</i>	<i>Liquor Store</i>	<i>No Response</i>
Buffalo PD	39	5	18	1	3		12	3	18	3	1	4	13
DCI													
Johnson SO	51	1	30	4	4		12	1	31	1	2	3	14
Kaycee PD													
Probation & Parole													
US Marshalls													
WHP	13	1	5	3	2		2	1	5	1	2	1	3
<i>Johnson County Totals</i>	103	7	53	8	9		26	5	54	5	5	8	30

Location of Alcohol Consumption

<i>Department</i>	<i>Bar Name</i>	<i>Number of Reports</i>
Buffalo PD	Century Club	8
	Cowboy Saloon	8
	Outback Lounge	2
Johnson SO	Century Club	2
	Cowboy Saloon	15
	Cowboy Town	2
	Hole in the Wall	1
	Hoot n Howl	2
	Outback Lounge	1
	Scoters	1
	White Buffalo	1
WHP	Cowboy Saloon	3
	Hole in the Wall	1
	Hoot n Howl	1

Laramie County
April 1, 2006 – September 30, 2006

Numbers by Department

<i>County</i> <i>Department</i>	<i>Total</i> <i>Offenses</i>	<i>Misdemeanor</i>	<i>Felony</i>	<i>Domestic</i> <i>Violence</i>	<i>Resisting</i> <i>Arrest</i>	<i>Assault</i>	<i>Public</i> <i>Intoxication</i>	<i>Alcohol</i> <i>Involved</i>	<i>Traffic</i> <i>Crash</i>	<i>Female</i>	<i>Male</i>	<i>Unknown</i> <i>Gender</i>	<i>Ave.</i> <i>Age</i>
Laramie	1272	932	222	71	16	32	50	642	18	269	975	28	31.97
Burns PD	6	3	2	1				4		1	5		40.17
Cheyenne PD	627	427	122	56	15	23	45	331	8	142	473	12	31.48
DCI	5		5							1	4		26.33
Diamondville PD	1	1									1		29.00
Laramie SO	407	305	73	12	1	8	1	138	3	85	314	8	31.17
Other	11	7	4				3	4		1	9	1	30.78
Pine Bluffs PD	3	3		1				1			3		24.67
Wheatland PD	1		1			1				1			13.00
WHP	211	186	15	1			1	164	7	38	166	7	35.44

Percents by Department

<i>County</i> <i>Department</i>	<i>Total</i> <i>Offenses</i>	<i>Misdemeanor</i>	<i>Felony</i>	<i>Domestic</i> <i>Violence</i>	<i>Resisting</i> <i>Arrest</i>	<i>Assault</i>	<i>Public</i> <i>Intoxication</i>	<i>Alcohol</i> <i>Involved</i>	<i>Traffic</i> <i>Crash</i>	<i>Female</i>	<i>Male</i>	<i>Unknown</i> <i>Gender</i>
Laramie	1272	73.27%	17.45%	5.58%	1.26%	2.52%	3.93%	50.47%	1.42%	21.15%	76.65%	2.20%
Burns PD	6	50.00%	33.33%	16.67%				66.67%		16.67%	83.33%	
Cheyenne PD	627	68.10%	19.46%	8.93%	2.39%	3.67%	7.18%	52.79%	1.28%	22.65%	75.44%	1.91%
DCI	5		100.00%							20.00%	80.00%	
Diamondville PD	1	100.00%									100.00%	
Laramie SO	407	74.94%	17.94%	2.95%	0.25%	1.97%	0.25%	33.91%	0.74%	20.88%	77.15%	1.97%
Other	11	63.64%	36.36%				27.27%	36.36%		9.09%	81.82%	9.09%
Pine Bluffs PD	3	100.00%		33.33%				33.33%			100.00%	
Wheatland PD	1		100.00%			100.00%				100.00%		
WHP	211	88.15%	7.11%	0.47%			0.47%	77.73%	3.32%	18.01%	78.67%	3.32%

* "Other" includes: Game & Fish (1), ICE (1), USAF (1), USMS (1) and reports not designating a department (7).

MIP Arrests

County Department	DUI Offenses	MIP Arrests	% MIP to DUI	Average MIP BAC
Laramie	212	16	7.55%	0.1143
Burns PD	1			
Cheyenne PD	57	6	10.53%	0.1297
DCI				
Diamondville PD				
Laramie SO	60	5	8.33%	0.1032
Other	1	1	100.00%	0.2000
Pine Bluffs PD				
Wheatland PD				
WHP	93	4	4.30%	0.0835

DUI Arrests

County Department	Total Offenses	DUI Offenses	% DUI Of Total	Ave. BAC	Open Container	Passenger in Vehicle
Laramie	1272	212	16.67%	0.1523	12	9
Burns PD	6	1	16.67%	0.2100		
Cheyenne PD	627	57	9.09%	0.1777	2	
DCI	5					
Diamondville PD	1					
Laramie SO	407	60	14.74%	0.1542	1	1
Other	11	1	9.09%	0.0900		
Pine Bluffs PD	3					
Wheatland PD	1					
WHP	211	93	44.08%	0.1356	9	8

Underage DUI Arrests

County Department	DUI Offenses	Underage Offenses	% DUI Of Total	Ave. BAC	Open Container	Passenger in Vehicle
Laramie	212	17	8.02%	0.1124	2	2
Burns PD	1					
Cheyenne PD	57	3	5.26%	0.1430		
DCI						
Diamondville PD						
Laramie SO	60	7	11.67%	0.1160		
Other	1					
Pine Bluffs PD						
Wheatland PD						
WHP	93	7	7.53%	0.0957	2	2

Meth, Drugs and Public Intoxication

County Department	Total Offenses	Meth Involved	Other Drugs Involved	Public Intox.	Pub. Intox. Ave. BAC
Laramie	1272	45	105	50	0.2018
Burns PD	6				
Cheyenne PD	627	19	44	45	0.2395
DCI	5	2	2		
Diamondville PD	1		1		
Laramie SO	407	20	26	1	0.2800
Other	11			3	0.1250
Pine Bluffs PD	3		1		
Wheatland PD	1				
WHP	211	4	31	1	

Traffic Crashes

County Department	Traffic Crashes	Alcohol Involved	Wearing Seatbelt	Average BAC
Laramie	18	17	8	0.1731
Burns PD				
Cheyenne PD	8	8	3	0.1675
DCI				
Diamondville PD				
Laramie SO	3	3	2	0.1595
Other				
Pine Bluffs PD				
Wheatland PD				
WHP	7	6	3	0.1980

Total Offenses-Alcohol Involvement

County Department	Total Offenses	Number Involving Alcohol	Percent of Total Involving Alcohol
Laramie	1272	642	50.47%
Burns PD	6	4	66.67%
Cheyenne PD	627	331	52.79%
DCI	5		
Diamondville PD	1		
Laramie SO	407	138	33.91%
Other	11	4	36.36%
Pine Bluffs PD	3	1	33.33%
Wheatland PD	1		
WHP	211	164	77.73%

Felony Offenses-Alcohol Involvement

County Department	Felony Offenses	Number Involving Alcohol	Percent of Felony Offenses Involving Alcohol
Laramie	222	37	16.67%
Burns PD	2		
Cheyenne PD	122	25	20.49%
DCI	5		
Diamondville PD			
Laramie SO	73	9	12.33%
Other	4		
Pine Bluffs PD			
Wheatland PD	1		
WHP	15	3	20.00%

Misdemeanor Offenses-Alcohol Involvement

County Department	Misdemeanor Offenses	Number Involving Alcohol	Percent of Misdemeanor Offenses Involving Alcohol
Laramie	932	556	59.66%
Burns PD	3	3	100.00%
Cheyenne PD	427	271	63.47%
DCI			
Diamondville PD	1		
Laramie SO	305	124	40.66%
Other	7	4	57.14%
Pine Bluffs PD	3	1	33.33%
Wheatland PD			
WHP	186	153	82.26%

Domestic Violence-Alcohol Involvement

County Department	Domestic Violence Offenses	Number Involving Alcohol	Percent of Domestic Violence Offenses Involving Alcohol
Laramie	71	31	43.66%
Burns PD	1	1	100.00%
Cheyenne PD	56	25	44.64%
DCI			
Diamondville PD			
Laramie SO	12	4	33.33%
Other			
Pine Bluffs PD	1	1	100.00%
Wheatland PD			
WHP	1		

Resisting Arrest-Alcohol Involvement

County Department	Resisting Arrest Offenses	Number Involving Alcohol	Percent of Resisting Arrest Offenses Involving Alcohol
Laramie	16	11	68.75%
Burns PD			
Cheyenne PD	15	11	73.33%
DCI			
Diamondville PD			
Laramie SO	1		
Other			
Pine Bluffs PD			
Wheatland PD			
WHP			

Assault-Alcohol Involvement

County Department	Assault Offenses	Number Involving Alcohol	Percent of Assault Offenses Involving Alcohol
Laramie	32	9	28.13%
Burns PD			
Cheyenne PD	23	8	34.78%
DCI			
Diamondville PD			
Laramie SO	8	1	12.50%
Other			
Pine Bluffs PD			
Wheatland PD	1		
WHP			

Location of Alcohol Consumption and Point of Sale by Department

<i>Department</i>	<i>Location of Consumption</i>						<i>Point of Sale</i>						
	<i>Alcohol Involved</i>	<i>Home</i>	<i>Bar</i>	<i>Party</i>	<i>Car</i>	<i>Other</i>	<i>No Response</i>	<i>Home</i>	<i>Bar</i>	<i>Drive Up</i>	<i>Party</i>	<i>Liquor Store</i>	<i>No Response</i>
Burns PD	4	1	2			1		1	3				
Cheyenne PD	331	91	106	20	7	14	91	54	114	6	20	26	109
DCI													
Diamondville PD													
Laramie SO	138	59	32	8	3	9	28	40	33	1	6	21	37
Other	4	1	1			2			1				3
Pine Bluffs PD	1	1						1					
Wheatland PD													
WHP	164	32	69	16	17	12	18	25	68	2	13	21	34
<i>Laramie County Totals</i>	642	185	210	44	27	38	137	121	219	9	39	68	183

Location of Alcohol Consumption

<i>Department</i>	<i>Bar Name</i>	<i>Number of Reports</i>	<i>Department</i>	<i>Bar Name</i>	<i>Number of Reports</i>	<i>Department</i>	<i>Bar Name</i>	<i>Number of Reports</i>
Burns PD	Antelope	1	Laramie SO	Albany	1	WHP	American Legion	1
Cheyenne PD	Albany	5		Cheyenne Club	1		Antelope	3
	American GI Forum	2		Clown's Den	1		Bunckhouse	1
	Anderson's Corner	1		Crown Snakeriver	2		Chili's	1
	Big Horn	1		DT's	1		Clown's Den	3
	CB Potts	2		Lamp Lounge	1		Cowboy	1
	Cheyenne Club	13		Outlaw	2		Crown Snakeriver	2
	City Club	1		Rock n Rodeo	1		DT's	1
	Clown's Den	2		Scooter's	1		Eagle's Nest	3
	Crown Snakeriver	6		The Den	1		Four Winds	1
	DT's	1					Goofy's	5
	Eagle's Nest	1					Green Door	1
	Four Winds	2					Hitching Post	1
	Goofy's	3					Keg & Cork	1
	Green Door	2					Lamp Lounge	1
	Hitching Post	1					Outlaw	2
	Juke's	1					Redwood	3
	Lakewood Grill	1					T Joe's	2
	Lamp Lounge	4					Tumbleweed	1
	Outlaw	2						
	Scooter's	1						
	Uncle Charlie's	1						
	VFW	1						

Lincoln County
April 1, 2006 – September 30, 2006

Numbers by Department

<i>County</i> <i>Department</i>	<i>Total</i> <i>Offenses</i>	<i>Misdemeanor</i>	<i>Felony</i>	<i>Domestic</i> <i>Violence</i>	<i>Resisting</i> <i>Arrest</i>	<i>Assault</i>	<i>Public</i> <i>Intoxication</i>	<i>Alcohol</i> <i>Involved</i>	<i>Traffic</i> <i>Crash</i>	<i>Female</i>	<i>Male</i>	<i>Unknown</i> <i>Gender</i>	<i>Ave.</i> <i>Age</i>
Lincoln	169	137	22	16	4	10	6	105	13	31	134	4	33.86
Afton PD	6	6		1	1	1		4			6		31.17
Alpine PD	4	3						2			4		29.25
Cokeville PD	13	10	3					3		3	9	1	28.00
Diamondville PD	14	12	2			1		8		3	11		34.85
Kemmerer PD	29	22	3	3	2	1	4	21	2	6	23		34.17
LaBarge PD	9	5		5		1		2		2	7		33.71
Lincoln SO	70	56	13	7	1	6	2	47	5	12	55	3	35.11
WHP	24	23	1					18	6	5	19		34.58

Percents by Department

<i>County</i> <i>Department</i>	<i>Total</i> <i>Offenses</i>	<i>Misdemeanor</i>	<i>Felony</i>	<i>Domestic</i> <i>Violence</i>	<i>Resisting</i> <i>Arrest</i>	<i>Assault</i>	<i>Public</i> <i>Intoxication</i>	<i>Alcohol</i> <i>Involved</i>	<i>Traffic</i> <i>Crash</i>	<i>Female</i>	<i>Male</i>	<i>Unknown</i> <i>Gender</i>
Lincoln	169	81.07%	13.02%	9.47%	2.37%	5.92%	3.55%	62.13%	7.69%	18.34%	79.29%	2.37%
Afton PD	6	100.00%		16.67%	16.67%	16.67%		66.67%			100.00%	
Alpine PD	4	75.00%						50.00%			100.00%	
Cokeville PD	13	76.92%	23.08%					23.08%		23.08%	69.23%	7.69%
Diamondville PD	14	85.71%	14.29%			7.14%		57.14%		21.43%	78.57%	
Kemmerer PD	29	75.86%	10.34%	10.34%	6.90%	3.45%	13.79%	72.41%	6.90%	20.69%	79.31%	
LaBarge PD	9	55.56%		55.56%		11.11%		22.22%		22.22%	77.78%	
Lincoln SO	70	80.00%	18.57%	10.00%	1.43%	8.57%	2.86%	67.14%	7.14%	17.14%	78.57%	4.29%
WHP	24	95.83%	4.17%					75.00%	25.00%	20.83%	79.17%	

MIP Arrests

County Department	DUI Offenses	MIP Arrests	% MIP to DUI	Average MIP BAC
Lincoln	55	4	7.27%	0.1048
Afton PD	3			
Alpine PD	1			
Cokeville PD	2	1	50.00%	0.0990
Diamondville PD	7	1	14.29%	0.1270
Kemmerer PD	6			
LaBarge PD				
Lincoln SO	23	1	4.35%	0.0830
WHP	13	1	7.69%	0.1100

DUI Arrests

County Department	Total Offenses	DUI Offenses	% DUI Of Total	Ave. BAC	Open Container	Passenger in Vehicle
Lincoln	169	55	32.54%	0.1304	18	9
Afton PD	6	3	50.00%	0.1233	1	1
Alpine PD	4	1	25.00%	0.1300	1	
Cokeville PD	13	2	15.38%	0.1470		
Diamondville PD	14	7	50.00%	0.1677	3	2
Kemmerer PD	29	6	20.69%	0.1415	1	
LaBarge PD	9					
Lincoln SO	70	23	32.86%	0.1157	8	5
WHP	24	13	54.17%	0.1303	4	1

Underage DUI Arrests

County Department	DUI Offenses	Underage Offenses	% DUI Of Total	Ave. BAC	Open Container	Passenger in Vehicle
Lincoln	55	3	5.45%	0.1253	0	0
Afton PD	3					
Alpine PD	1					
Cokeville PD	2					
Diamondville PD	7	1	14.29%	0.1270		
Kemmerer PD	6					
LaBarge PD						
Lincoln SO	23	1	4.35%	0.1590		
WHP	13	1	7.69%	0.0900		

Meth, Drugs and Public Intoxication

County Department	Total Offenses	Meth Involved	Other Drugs Involved	Public Intox.	Pub. Intox. Ave. BAC
Lincoln	169	15	32	6	0.2420
Afton PD	6		2		
Alpine PD	4		1		
Cokeville PD	13	4	6		
Diamondville PD	14	2	1		
Kemmerer PD	29		4	4	
LaBarge PD	9	3	2		
Lincoln SO	70	4	13	2	0.2420
WHP	24	2	3		

Traffic Crashes

County Department	Traffic Crashes	Alcohol Involved	Wearing Seatbelt	Average BAC
Lincoln	13	13	6	0.1094
Afton PD				
Alpine PD				
Cokeville PD				
Diamondville PD				
Kemmerer PD	2	2		
LaBarge PD				
Lincoln SO	5	5	1	0.1138
WHP	6	6	5	0.1050

Total Offenses-Alcohol Involvement

County Department	Total Offenses	Number Involving Alcohol	Percent of Total Involving Alcohol
Lincoln	169	105	62.13%
Afton PD	6	4	66.67%
Alpine PD	4	2	50.00%
Cokeville PD	13	3	23.08%
Diamondville PD	14	8	57.14%
Kemmerer PD	29	21	72.41%
LaBarge PD	9	2	22.22%
Lincoln SO	70	47	67.14%
WHP	24	18	75.00%

Felony Offenses-Alcohol Involvement

County Department	Felony Offenses	Number Involving Alcohol	Percent of Felony Offenses Involving Alcohol
Lincoln	22	6	27.27%
Afton PD			
Alpine PD			
Cokeville PD	3		
Diamondville PD	2	1	50.00%
Kemmerer PD	3	2	66.67%
LaBarge PD			
Lincoln SO	13	3	23.08%
WHP	1		

Misdemeanor Offenses-Alcohol Involvement

County Department	Misdemeanor Offenses	Number Involving Alcohol	Percent of Misdemeanor Offenses Involving Alcohol
Lincoln	137	94	68.61%
Afton PD	6	4	66.67%
Alpine PD	3	2	66.67%
Cokeville PD	10	3	30.00%
Diamondville PD	12	7	58.33%
Kemmerer PD	22	16	72.73%
LaBarge PD	5	1	20.00%
Lincoln SO	56	43	76.79%
WHP	23	18	78.26%

Domestic Violence-Alcohol Involvement

County Department	Domestic Violence Offenses	Number Involving Alcohol	Percent of Domestic Violence Offenses Involving Alcohol
Lincoln	16	7	43.75%
Afton PD	1		
Alpine PD			
Cokeville PD			
Diamondville PD			
Kemmerer PD	3	3	100.00%
LaBarge PD	5		
Lincoln SO	7	4	57.14%
WHP			

Resisting Arrest-Alcohol Involvement

County Department	Resisting Arrest Offenses	Number Involving Alcohol	Percent of Resisting Arrest Offenses Involving Alcohol
Lincoln	4	4	100.00%
Afton PD	1	1	100.00%
Alpine PD			
Cokeville PD			
Diamondville PD			
Kemmerer PD	2	2	100.00%
LaBarge PD			
Lincoln SO	1	1	100.00%
WHP			

Assault-Alcohol Involvement

County Department	Assault Offenses	Number Involving Alcohol	Percent of Assault Offenses Involving Alcohol
Lincoln	10	4	40.00%
Afton PD	1	1	100.00%
Alpine PD			
Cokeville PD			
Diamondville PD	1	1	100.00%
Kemmerer PD	1	1	100.00%
LaBarge PD	1	1	100.00%
Lincoln SO	6		
WHP			

Location of Alcohol Consumption and Point of Sale by Department

<i>Department</i>	<i>Alcohol Involved</i>	<i>Location of Consumption</i>					<i>No Response</i>	<i>Point of Sale</i>					
		<i>Home</i>	<i>Bar</i>	<i>Party</i>	<i>Car</i>	<i>Other</i>		<i>Home</i>	<i>Bar</i>	<i>Drive Up</i>	<i>Party</i>	<i>Liquor Store</i>	<i>No Response</i>
Afton PD	4		1		1	2	1		1			1	2
Alpine PD	2		1				1		1				1
Cokeville PD	3				3			1		1			1
Diamondville PD	8	1	2		1	1	3	1	3				4
Kemmerer PD	21	2	7		1	3	8	1	7			3	10
LaBarge PD	2		1				1						2
Lincoln SO	47	6	10	4	10		17	3	11		1	4	27
WHP	18	1	7	3	4	3	1		9		2	3	4
<i>Lincoln County Totals</i>	105	10	29	7	20	9	32	6	32	1	3	11	51

Location of Alcohol Consumption

<i>Department</i>	<i>Bar Name</i>	<i>Number of Reports</i>
Alpine PD	Bull Moose Saloon	1
Diamondville PD	Grumpy's	1
Kemmerer PD	Grid Iron	4
	Grumpy's	1
	Stock Exchange	1
Lincoln SO	Bull Moose	2
	Outlaw	1
WHP	Dad's Bar	2
	Grumpy's	1
	Snake Pit	1
	Snake River Saloon	2

Natrona County
April 1, 2006 – September 30, 2006

Numbers by Department

<i>County</i> <i>Department</i>	<i>Total</i> <i>Offenses</i>	<i>Misdemeanor</i>	<i>Felony</i>	<i>Domestic</i> <i>Violence</i>	<i>Resisting</i> <i>Arrest</i>	<i>Assault</i>	<i>Public</i> <i>Intoxication</i>	<i>Alcohol</i> <i>Involved</i>	<i>Traffic</i> <i>Crash</i>	<i>Female</i>	<i>Male</i>	<i>Unknown</i> <i>Gender</i>	<i>Ave.</i> <i>Age</i>
Natrona	1691	1422	181	70	24	50	173	1021	67	345	1257	89	32.10
Casper PD	1113	960	104	57	17	39	162	729	49	227	828	58	31.77
DCI	14	3	12					1		7	6	1	31.88
Evansville PD	74	64	1	3	2	1	5	41		15	52	7	29.83
Midwest PD	1		1							1			39.00
Mills PD	140	125	9		2	1	6	79	5	32	104	4	35.41
Natrona SO	259	194	44	10	3	8		110	8	46	199	14	30.60
Other *	14	3	6					3		3	8	3	30.57
WHP	76	73	4			1		58	5	14	60	2	36.35

Percents by Department

<i>County</i> <i>Department</i>	<i>Total</i> <i>Offenses</i>	<i>Misdemeanor</i>	<i>Felony</i>	<i>Domestic</i> <i>Violence</i>	<i>Resisting</i> <i>Arrest</i>	<i>Assault</i>	<i>Public</i> <i>Intoxication</i>	<i>Alcohol</i> <i>Involved</i>	<i>Traffic</i> <i>Crash</i>	<i>Female</i>	<i>Male</i>	<i>Unknown</i> <i>Gender</i>
Natrona	1691	84.09%	10.70%	4.14%	1.42%	2.96%	10.23%	60.38%	3.96%	20.40%	74.33%	5.26%
Casper PD	1113	86.25%	9.34%	5.12%	1.53%	3.50%	14.56%	65.50%	4.40%	20.40%	74.39%	5.21%
DCI	14	21.43%	85.71%					7.14%		50.00%	42.86%	7.14%
Evansville PD	74	86.49%	1.35%	4.05%	2.70%	1.35%	6.76%	55.41%		20.27%	70.27%	9.46%
Midwest PD	1		100.00%							100.00%		
Mills PD	140	89.29%	6.43%		1.43%	0.71%	4.29%	56.43%	3.57%	22.86%	74.29%	2.86%
Natrona SO	259	74.90%	16.99%	3.86%	1.16%	3.09%		42.47%	3.09%	17.76%	76.83%	5.41%
Other	14	21.43%	42.86%					21.43%		21.43%	57.14%	21.43%
WHP	76	96.05%	5.26%			1.32%		76.32%	6.58%	18.42%	78.95%	2.63%

* "Other" includes DCF (1), DEA (3), Game & Fish (3), Other (2), US Marshal (2) and those records which did not indicate a department (3)

MIP Arrests

County Department	DUI Offenses	MIP Arrests	% MIP to DUI	Average MIP BAC
Natrona	246	25	10.16%	0.1384
Casper PD	149	19	12.75%	0.1368
DCI				
Evansville PD	8	1	12.50%	0.1400
Midwest PD				
Mills PD	23			
Natrona SO	38	4	10.53%	0.1500
Other	2			
WHP	26	1	3.85%	0.1200

DUI Arrests

County Department	Total Offenses	DUI Offenses	% DUI Of Total	Ave. BAC	Open Container	Passenger in Vehicle
Natrona	1691	246	14.55%	0.1662	24	11
Casper PD	1113	149	13.39%	0.1699	12	7
DCI	14					
Evansville PD	74	8	10.81%	0.1654	2	1
Midwest PD	1					
Mills PD	140	23	16.43%	0.1570		1
Natrona SO	259	38	14.67%	0.1660	5	1
Other	14	2	14.29%	0.1250		
WHP	76	26	34.21%	0.1567	5	1

Underage DUI Arrests

County Department	DUI Offenses	Underage Offenses	% DUI Of Total	Ave. BAC	Open Container	Passenger in Vehicle
Natrona	246	33	13.41%	0.1481	2	2
Casper PD	149	26	17.45%	0.1484	2	2
DCI						
Evansville PD	8	1	12.50%	0.1400		
Midwest PD						
Mills PD	23	2	8.70%	0.1350		
Natrona SO	38	3	7.89%	0.1667		
Other	2					
WHP	26	1	3.85%	0.1200		

Meth, Drugs and Public Intoxication

County Department	Total Offenses	Meth Involved	Other Drugs Involved	Public Intox.	Pub. Intox. Ave. BAC
Natrona	1691	53	106	173	0.1807
Casper PD	1113	29	63	162	0.1852
DCI	14	5	3		
Evansville PD	74	1	4	5	
Midwest PD	1				
Mills PD	140	10	12	6	0.1400
Natrona SO	259	4	16		
Other	14	3	1		
WHP	76	1	7		

Traffic Crashes

County Department	Traffic Crashes	Alcohol Involved	Wearing Seatbelt	Average BAC
Natrona	67	61	11	0.1681
Casper PD	49	46	8	0.1623
DCI				
Evansville PD				
Midwest PD				
Mills PD	5	4		0.1750
Natrona SO	8	7	2	0.1833
Other				
WHP	5	4	1	0.1900

Total Offenses-Alcohol Involvement

County Department	Total Offenses	Number Involving Alcohol	Percent of Total Involving Alcohol
Natrona	1691	1021	60.38%
Casper PD	1113	729	65.50%
DCI	14	1	7.14%
Evansville PD	74	41	55.41%
Midwest PD	1		
Mills PD	140	79	56.43%
Natrona SO	259	110	42.47%
Other	14	3	21.43%
WHP	76	58	76.32%

Felony Offenses-Alcohol Involvement

County Department	Felony Offenses	Number Involving Alcohol	Percent of Felony Offenses Involving Alcohol
Natrona	181	48	26.52%
Casper PD	104	40	38.46%
DCI	12	1	8.33%
Evansville PD	1	1	100.00%
Midwest PD	1		
Mills PD	9	2	22.22%
Natrona SO	44	3	6.82%
Other	6		
WHP	4	1	25.00%

Misdemeanor Offenses-Alcohol Involvement

County Department	Misdemeanor Offenses	Number Involving Alcohol	Percent of Misdemeanor Offenses Involving Alcohol
Natrona	1422	929	65.33%
Casper PD	960	657	68.44%
DCI	3		
Evansville PD	64	35	54.69%
Midwest PD			
Mills PD	125	74	59.20%
Natrona SO	194	103	53.09%
Other	3	3	100.00%
WHP	73	57	78.08%

Domestic Violence-Alcohol Involvement

County Department	Domestic Violence Offenses	Number Involving Alcohol	Percent of Domestic Violence Offenses Involving Alcohol
Natrona	70	47	67.14%
Casper PD	57	38	66.67%
DCI			
Evansville PD	3	3	100.00%
Midwest PD			
Mills PD			
Natrona SO	10	6	60.00%
Other			
WHP			

Resisting Arrest-Alcohol Involvement

County Department	Resisting Arrest Offenses	Number Involving Alcohol	Percent of Resisting Arrest Offenses Involving Alcohol
Natrona	24	19	79.17%
Casper PD	17	13	76.47%
DCI			
Evansville PD	2	2	100.00%
Midwest PD			
Mills PD	2	2	100.00%
Natrona SO	3	2	66.67%
Other			
WHP			

Assault-Alcohol Involvement

County Department	Assault Offenses	Number Involving Alcohol	Percent of Assault Offenses Involving Alcohol
Natrona	50	25	50.00%
Casper PD	39	20	51.28%
DCI			
Evansville PD	1	1	100.00%
Midwest PD			
Mills PD	1	1	100.00%
Natrona SO	8	3	37.50%
Other			
WHP	1		

Location of Alcohol Consumption and Point of Sale by Department

<i>Department</i>	<i>Alcohol Involved</i>	<i>Location of Consumption</i>						<i>Point of Sale</i>					
		<i>Home</i>	<i>Bar</i>	<i>Party</i>	<i>Car</i>	<i>Other</i>	<i>No Response</i>	<i>Home</i>	<i>Bar</i>	<i>Drive Up</i>	<i>Party</i>	<i>Liquor Store</i>	<i>No Response</i>
Casper PD	729	161	218	56	34	51	208	98	223	9	39	53	307
DCI	1						1						1
Evansville PD	41	5	10	2	4	1	19	1	11		4		25
Midwest PD													
Mills PD	79	15	36	3	2	3	19	4	34	1	1	5	33
Natrona SO	110	20	41	10	9	6	22	11	41	4	11	5	35
Other	3			2		1					2		1
WHP	58	11	20	1	13	9	5	6	19	5	3	8	20
<i>Natrona County Totals</i>	1021	212	325	74	62	71	274	120	328	19	60	71	422

Location of Alcohol Consumption

<i>Department</i>	<i>Bar Name</i>	<i>Number of Reports</i>								
Casper PD	Alibi	9		Rosie's	1		Sidelines	2		
	Applebee's	1		Sandbar	18		VFW	1		
	Avalon	1	Evansville PD	Sidelines	31	WHP	Alibi	1		
	Beacon	6		Wonder Bar	7		Beacon Club	1		
	Butch's	9		Avalon	1		Butch's Cowboys	1		
	Cowboys	4	Mills PD	Butch's	2		Glenrock	2		
	Drake's	1		Sidelines	1		Moonlight	1		
	Eagle Bowling	1		Baja Beach Club	2		Northern Dreams	1		
	El Marko	2		Beacon Club	16		Old Chicago	1		
	Elks	1		Butch's	1		Sage Club	1		
	Fire Rock	1		Cowboys	2		Shoshoni	1		
	Fireside	2		Hidaway	4		Sunset Bar & Grill	1		
	Four Aces	1		OT	4					
	Galles	2	Natrona SO	Sandbar	2					
	Holiday Inn	1		Sidelines	2					
	Mill View	1		Bayou	1					
	Moonlight	17		Beacon Club	3					
	Northern Dreams	1		Butch's	1					
	Paradise Liquor	3		Cowboys	1					
	Parkway Plaza	1		Eagles	1					
	Powder River	1		Fireside	1					
				Horshoe	2					
				North 40	1					
			Roadway	1						

Niobrara County
April 1, 2006 – September 30, 2006

Numbers by Department

<i>County Department</i>	<i>Total Offenses</i>	<i>Misdemeanor</i>	<i>Felony</i>	<i>Domestic Violence</i>	<i>Resisting Arrest</i>	<i>Assault</i>	<i>Public Intoxication</i>	<i>Alcohol Involved</i>	<i>Traffic Crash</i>	<i>Female</i>	<i>Male</i>	<i>Unknown Gender</i>	<i>Ave. Age</i>
Niobrara	24	20	4	0	0	0	2	16	1	7	17		32.33
Game & Fish	1	1									1		
Lusk PD	4	4						2		1	3		42.67
Marshals	4		4							4			30.25
Niobrara SO	7	7					2	7	1	1	6		29.17
WHP	8	8						7		1	7		31.88

Percents by Department

<i>County Department</i>	<i>Total Offenses</i>	<i>Misdemeanor</i>	<i>Felony</i>	<i>Domestic Violence</i>	<i>Resisting Arrest</i>	<i>Assault</i>	<i>Public Intoxication</i>	<i>Alcohol Involved</i>	<i>Traffic Crash</i>	<i>Female</i>	<i>Male</i>	<i>Unknown Gender</i>
Niobrara	24	83.33%	16.67%				8.33%	66.67%	4.17%	29.17%	70.83%	
Game & Fish	1	100.00%									100.00%	
Lusk PD	4	100.00%						50.00%		25.00%	75.00%	
Marshals	4		100.00%							100.00%		
Niobrara SO	7	100.00%					28.57%	100.00%	14.29%	14.29%	85.71%	
WHP	8	100.00%						87.50%		12.50%	87.50%	

MIP Arrests

<i>County</i>	<i>DUI</i>	<i>MIP</i>	<i>% MIP to</i>	<i>Average</i>
<i>Department</i>	<i>Offenses</i>	<i>Arrests</i>	<i>DUI</i>	<i>MIP BAC</i>
Niobrara	3	1	33.33%	0.1000
Game & Fish				
Lusk PD	1			
Marshals				
Niobrara SO	1	1	33.33%	0.1000
WHP	2			

DUI Arrests

<i>County</i>	<i>Total</i>	<i>DUI</i>	<i>% DUI</i>	<i>Average</i>	<i>Open</i>	<i>Passenger</i>
<i>Department</i>	<i>Offenses</i>	<i>Offenses</i>	<i>Of Total</i>	<i>BAC</i>	<i>Container</i>	<i>in Vehicle</i>
Niobrara	24	3	12.50%	0.2033	2	1
Game & Fish	1					
Lusk PD	4	1	25.00%	0.2300		
Marshals	4					
Niobrara SO	7	1	14.29%			
WHP	8	2	25.00%	0.1900	2	1

Underage DUI Arrests

<i>County</i>	<i>DUI</i>	<i>Underage</i>	<i>% DUI</i>	<i>Average</i>	<i>Open</i>	<i>Passenger</i>
<i>Department</i>	<i>Offenses</i>	<i>Offenses</i>	<i>Of Total</i>	<i>BAC</i>	<i>Container</i>	<i>in Vehicle</i>
Niobrara	3	0	0.00			
Game & Fish						
Lusk PD	1					
Marshals						
Niobrara SO	1					
WHP	2					

Meth, Drugs and Public Intoxication

<i>County</i>	<i>Total</i>	<i>Meth</i>	<i>Other</i>	<i>Public</i>	<i>Pub. Intox.</i>
<i>Department</i>	<i>Offenses</i>	<i>Involved</i>	<i>Drugs</i>	<i>Intox.</i>	<i>Average</i>
			<i>Involved</i>		<i>BAC</i>
Niobrara	24	0	1	2	0.0950
Game & Fish	1				
Lusk PD	4		1		
Marshals	4				
Niobrara SO	7			2	0.0950
WHP	8				

Traffic Crashes

<i>County</i>	<i>Traffic</i>	<i>Alcohol</i>	<i>Wearing</i>	<i>Average</i>
<i>Department</i>	<i>Crashes</i>	<i>Involved</i>	<i>Seatbelt</i>	<i>BAC</i>
Niobrara	1	1	1	
Game & Fish				
Lusk PD				
Marshals				
Niobrara SO	1	1	1	
WHP				

Total Offenses-Alcohol Involvement

<i>County Department</i>	<i>Total Offenses</i>	<i>Number Involving Alcohol</i>	<i>Percent of Total Involving Alcohol</i>
Niobrara	24	16	66.67%
Game & Fish	1		
Lusk PD	4	2	50.00%
Marshals	4		
Niobrara SO	7	7	100.00%
WHP	8	7	87.50%

Felony Offenses-Alcohol Involvement

<i>County Department</i>	<i>Felony Offenses</i>	<i>Number Involving Alcohol</i>	<i>Percent of Felony Offenses Involving Alcohol</i>
Niobrara	4	0	0.00%
Game & Fish			
Lusk PD			
Marshals	4		
Niobrara SO			
WHP			

Misdemeanor Offenses-Alcohol Involvement

<i>County Department</i>	<i>Misdemeanor Offenses</i>	<i>Number Involving Alcohol</i>	<i>Percent of Misdemeanor Offenses Involving Alcohol</i>
Niobrara	20	16	80.00%
Game & Fish	1		
Lusk PD	4	2	50.00%
Marshals			
Niobrara SO	7	7	100.00%
WHP	8	7	87.50%

Domestic Violence-Alcohol Involvement

<i>County Department</i>	<i>Domestic Violence Offenses</i>	<i>Number Involving Alcohol</i>	<i>Percent of Domestic Violence Offenses Involving Alcohol</i>
Niobrara	0	0	0.00%
Game & Fish			
Lusk PD			
Marshals			
Niobrara SO			
WHP			

Resisting Arrest-Alcohol Involvement

<i>County Department</i>	<i>Resisting Arrest Offenses</i>	<i>Number Involving Alcohol</i>	<i>Percent of Resisting Arrest Offenses Involving Alcohol</i>
Niobrara	0	0	0.00%
Game & Fish			
Lusk PD			
Marshals			
Niobrara SO			
WHP			

Assault-Alcohol Involvement

<i>County Department</i>	<i>Assault Offenses</i>	<i>Number Involving Alcohol</i>	<i>Percent of Assault Offenses Involving Alcohol</i>
Niobrara	0	0	0.00%
Game & Fish			
Lusk PD			
Marshals			
Niobrara SO			
WHP			

Location of Alcohol Consumption and Point of Sale by Department

<i>Department</i>	<i>Alcohol Involved</i>	<i>Location of Consumption</i>						<i>Point of Sale</i>					
		<i>Home</i>	<i>Bar</i>	<i>Party</i>	<i>Car</i>	<i>Other</i>	<i>No Response</i>	<i>Home</i>	<i>Bar</i>	<i>Drive Up</i>	<i>Party</i>	<i>Liquor Store</i>	<i>No Response</i>
Game & Fish													
Lusk PD	2		1		1			1					1
Marshals													
Niobrara SO	7		1		1	1	4		1				6
WHP	7		1		4		2	2	1			1	3
<i>Niobrara County Totals</i>	1624	0	3	0	6	1	6	3	2	0	0	1	10

Location of Alcohol Consumption

<i>Department</i>	<i>Bar Name</i>	<i>Number of Reports</i>
Lusk PD	Harrison	1
Niobrara SO	El Jarro	1

Park County
April 1, 2006 – September 30, 2006

Numbers by Department

<i>County</i>	<i>Total</i>			<i>Domestic</i>	<i>Resisting</i>		<i>Public</i>	<i>Alcohol</i>	<i>Traffic</i>			<i>Unknown</i>	<i>Ave.</i>
<i>Department</i>	<i>Offenses</i>	<i>Misdemeanor</i>	<i>Felony</i>	<i>Violence</i>	<i>Arrest</i>	<i>Assault</i>	<i>Intoxication</i>	<i>Involved</i>	<i>Crash</i>	<i>Female</i>	<i>Male</i>	<i>Gender</i>	<i>Age</i>
Park	267	225	31	18	4	3	12	189	5	55	206	6	32.40
Cody PD	104	95	4	9	1		5	84	2	24	78	2	34.30
DCI	2		2							1	1		33.50
Other *	5	4	2							1	4		24.20
Park SO	32	21	9	4		1		13	1	5	27		34.38
Powell PD	93	78	10	5	3	2	7	71	1	17	73	3	29.13
WHP	31	27	4					21	1	7	23	1	34.00

Percents by Department

<i>County</i>	<i>Total</i>			<i>Domestic</i>	<i>Resisting</i>		<i>Public</i>	<i>Alcohol</i>	<i>Traffic</i>			<i>Unknown</i>
<i>Department</i>	<i>Offenses</i>	<i>Misdemeanor</i>	<i>Felony</i>	<i>Violence</i>	<i>Arrest</i>	<i>Assault</i>	<i>Intoxication</i>	<i>Involved</i>	<i>Crash</i>	<i>Female</i>	<i>Male</i>	<i>Gender</i>
Park	267	84.27%	11.61%	6.74%	1.50%	1.12%	4.49%	70.79%	1.87%	20.60%	77.15%	2.25%
Cody PD	104	91.35%	3.85%	8.65%	0.96%		4.81%	80.77%	1.92%	23.08%	75.00%	1.92%
DCI	2		100.00%							50.00%	50.00%	
Other	5	80.00%	40.00%							20.00%	80.00%	
Park SO	32	65.63%	28.13%	12.50%		3.13%		40.63%	3.13%	15.63%	84.38%	
Powell PD	93	83.87%	10.75%	5.38%	3.23%	2.15%	7.53%	76.34%	1.08%	18.28%	78.49%	3.23%
WHP	31	87.10%	12.90%					67.74%	3.23%	22.58%	74.19%	3.23%

* "Other" includes ICE (1), Park Service (1) and Walk-in (2).

MIP Arrests

<i>County Department</i>	<i>DUI Offenses</i>	<i>MIP Arrests</i>	<i>% MIP to DUI</i>	<i>Average MIP BAC</i>
Park	91	13	14.29%	0.0908
Cody PD	42	2	4.76%	0.1000
DCI				
Other				
Park SO	6			
Powell PD	30	8	26.67%	0.0926
WHP	13	3	23.08%	0.0800

DUI Arrests

<i>County Department</i>	<i>Total Offenses</i>	<i>DUI Offenses</i>	<i>% DUI Of Total</i>	<i>Average BAC</i>	<i>Open Container</i>	<i>Passenger in Vehicle</i>
Park	267	91	34.08%	0.1525	5	2
Cody PD	104	42	40.38%	0.1581	3	
DCI	2					
Other	5					
Park SO	32	6	18.75%	0.1662	1	1
Powell PD	93	30	32.26%	0.1443	1	1
WHP	31	13	41.94%	0.1470		

Underage DUI Arrests

<i>County Department</i>	<i>DUI Offenses</i>	<i>Underage Offenses</i>	<i>% DUI Of Total</i>	<i>Average BAC</i>	<i>Open Container</i>	<i>Passenger in Vehicle</i>
Park	91	7	7.69%	0.1161	0	0
Cody PD	42	2	4.76%	0.1025		
DCI						
Other						
Park SO	6					
Powell PD	30	2	6.67%	0.1900		
WHP	13	3	23.08%	0.0760		

Meth, Drugs and Public Intoxication

<i>County Department</i>	<i>Total Offenses</i>	<i>Meth Involved</i>	<i>Other Drugs Involved</i>	<i>Public Intox.</i>	<i>Pub. Intox. Average BAC</i>
Park	267	13	15	12	0.1687
Cody PD	104		2	5	0.1610
DCI	2	2			
Other	5		3		
Park SO	32	5	1		0.0620
Powell PD	93	4	8	7	0.2335
WHP	31	4	1		

Traffic Crashes

<i>County Department</i>	<i>Traffic Crashes</i>	<i>Alcohol Involved</i>	<i>Wearing Seatbelt</i>	<i>Average BAC</i>
Park	5	5	0	0.1035
Cody PD	2	2		0.1100
DCI				
Other				
Park SO	1	1		0.1400
Powell PD	1	1		0.0900
WHP	1	1		0.0740

Total Offenses-Alcohol Involvement

County Department	Total Offenses	Number Involving Alcohol	Percent of Total Involving Alcohol
Park	267	189	70.79%
Cody PD	104	84	80.77%
DCI	2		
Other	5		
Park SO	32	13	40.63%
Powell PD	93	71	76.34%
WHP	31	21	67.74%

Felony Offenses-Alcohol Involvement

County Department	Felony Offenses	Number Involving Alcohol	Percent of Felony Offenses Involving Alcohol
Park	31	3	9.68%
Cody PD	4		
DCI	2		
Other	2		
Park SO	9		
Powell PD	10	3	30.00%
WHP	4		

Misdemeanor Offenses-Alcohol Involvement

County Department	Misdemeanor Offenses	Number Involving Alcohol	Percent of Misdemeanor Offenses Involving Alcohol
Park	225	180	80.00%
Cody PD	95	81	85.26%
DCI			
Other	4		
Park SO	21	11	52.38%
Powell PD	78	67	85.90%
WHP	27	21	77.78%

Domestic Violence-Alcohol Involvement

County Department	Domestic Violence Offenses	Number Involving Alcohol	Percent of Domestic Violence Offenses Involving Alcohol
Park	18	9	50.00%
Cody PD	9	6	66.67%
DCI			
Other			
Park SO	4	3	75.00%
Powell PD	5	3	60.00%
WHP			

Resisting Arrest-Alcohol Involvement

County Department	Resisting Arrest Offenses	Number Involving Alcohol	Percent of Resisting Arrest Offenses Involving Alcohol
Park	4	3	75.00%
Cody PD	1	1	100.00%
DCI			
Other			
Park SO			
Powell PD	3	2	66.67%
WHP			

Assault-Alcohol Involvement

County Department	Assault Offenses	Number Involving Alcohol	Percent of Assault Offenses Involving Alcohol
Park	3	2	66.67%
Cody PD			
DCI			
Other			
Park SO	1	1	100.00%
Powell PD	2	1	50.00%
WHP			

Location of Alcohol Consumption and Point of Sale by Department

<i>Department</i>	<i>Alcohol Involved</i>	<i>Location of Consumption</i>					<i>No Response</i>	<i>Point of Sale</i>					
		<i>Home</i>	<i>Bar</i>	<i>Party</i>	<i>Car</i>	<i>Other</i>		<i>Home</i>	<i>Bar</i>	<i>Drive Up</i>	<i>Party</i>	<i>Liquor Store</i>	<i>No Response</i>
Cody PD	84	16	41	3		1	23	11	43	2	1		27
DCI													
Other													
Park SO	13	6	2	1	3		1	4	2	1	1	2	3
Powell PD	71	7	38	1	3	5	20	3	33	4	1		31
WHP	21	2	6	2	3	2	6	3	6			1	11
<i>Converse County Totals</i>	189	31	87	7	9	8	50	21	84	7	3	3	72

Location of Alcohol Consumption

<i>Department</i>	<i>Bar Name</i>	<i>Number of Reports</i>
Cody PD	Cassie's	2
	Cooter Brown's	2
	Down Towner	1
	Irma	1
	Silver Dollar	2
	Whiskey River	3
Park SO	3 H	1
Powell PD	Backstreet	3
	Fireside	1
	Hansel & Gretel's	4
	Hooley's	1
	Joe's	2
	K-Bar	2
	Lavina's	6
	Legend	2
	Red Stag	1
WHP	Cassie's	1
	Joey's	1
	Silver Dollar	1

Platte County
April 1, 2006 – September 30, 2006

Numbers by Department

<i>County</i> <i>Department</i>	<i>Total</i> <i>Offenses</i>	<i>Misdemeanor</i>	<i>Felony</i>	<i>Domestic</i> <i>Violence</i>	<i>Resisting</i> <i>Arrest</i>	<i>Assault</i>	<i>Public</i> <i>Intoxication</i>	<i>Alcohol</i> <i>Involved</i>	<i>Traffic</i> <i>Crash</i>	<i>Female</i>	<i>Male</i>	<i>Unknown</i> <i>Gender</i>	<i>Ave.</i> <i>Age</i>
Platte	144	115	17	6	2	6	2	76	3	31	111	2	30.34
DCI	7	6	1					1			7		26.00
Guernsey PD	4	3				1		1			4		32.33
Other *	10	8		1		1	1	9		2	8		32.56
Platte SO	40	26	5	4	1	3		17		7	31	2	30.24
Wheatland PD	65	58	7	1	1	1	1	41	2	19	46		30.29
WHP	18	14	4					7	1	3	15		30.75

Percents by Department

<i>County</i> <i>Department</i>	<i>Total</i> <i>Offenses</i>	<i>Misdemeanor</i>	<i>Felony</i>	<i>Domestic</i> <i>Violence</i>	<i>Resisting</i> <i>Arrest</i>	<i>Assault</i>	<i>Public</i> <i>Intoxication</i>	<i>Alcohol</i> <i>Involved</i>	<i>Traffic</i> <i>Crash</i>	<i>Female</i>	<i>Male</i>	<i>Unknown</i> <i>Gender</i>
Platte	144	79.86%	11.81%	4.17%	1.39%	4.17%	1.39%	52.78%	2.08%	21.53%	77.08%	1.39%
DCI	7	85.71%	14.29%					14.29%			100.00%	
Guernsey PD	4	75.00%				25.00%		25.00%			100.00%	
Other	10	80.00%		10.00%		10.00%	10.00%	90.00%		20.00%	80.00%	
Platte SO	40	65.00%	12.50%	10.00%	2.50%	7.50%		42.50%		17.50%	77.50%	5.00%
Wheatland PD	65	89.23%	10.77%	1.54%	1.54%	1.54%	1.54%	63.08%	3.08%	29.23%	70.77%	
WHP	18	77.78%	22.22%					38.89%	5.56%	16.67%	83.33%	

* "Other" includes Game & Fish (7) , Probation & Parole (1) and State Park (2).

MIP Arrests

County Department	DUI Offenses	MIP Arrests	% MIP to DUI	Average MIP BAC
Platte	28	8	28.57%	0.1096
DCI				
Guernsey PD	1			
Other	4			
Platte SO	5	5	100.00%	0.1278
Wheatland PD	17	3	17.65%	0.0793
WHP	3			

DUI Arrests

County Department	Total Offenses	DUI Offenses	% DUI Of Total	Average BAC	Open Container	Passenger in Vehicle
Platte	144	28	19.44%	0.1464	3	1
DCI	7					
Guernsey PD	4	1	25.00%	0.1020		
Other	10	4	40.00%	0.0913		
Platte SO	40	5	12.50%	0.2593		
Wheatland PD	65	17	26.15%	0.1396	2	
WHP	18	3	16.67%	0.1600	1	1

Underage DUI Arrests

County Department	DUI Offenses	Underage Offenses	% DUI Of Total	Average BAC	Open Container	Passenger in Vehicle
Platte	28	4	14.29%	0.1135	1	0
DCI						
Guernsey PD	1					
Other	4					
Platte SO	5					
Wheatland PD	17	4	23.53%	0.1135	1	
WHP	3					

Meth, Drugs and Public Intoxication

County Department	Total Offenses	Meth Involved	Other Drugs Involved	Public Intox.	Pub. Intox. Average BAC
Platte	144	5	15	2	No report
DCI	7	2	2		
Guernsey PD	4				
Other	10			1	
Platte SO	40	1	3		
Wheatland PD	65	1	7	1	
WHP	18	1	3		

Traffic Crashes

County Department	Traffic Crashes	Alcohol Involved	Wearing Seatbelt	Average BAC
Platte	3	3	0	0.1550
DCI				
Guernsey PD				
Other				
Platte SO				
Wheatland PD	2	2		0.1550
WHP	1	1		

Total Offenses-Alcohol Involvement

County Department	Total Offenses	Number Involving Alcohol	Percent of Total Involving Alcohol
Platte	144	76	52.78%
DCI	7	1	14.29%
Guernsey PD	4	1	25.00%
Other	10	9	90.00%
Platte SO	40	17	42.50%
Wheatland PD	65	41	63.08%
WHP	18	7	38.89%

Domestic Violence-Alcohol Involvement

County Department	Domestic Violence Offenses	Number Involving Alcohol	Percent of Domestic Violence Offenses Involving Alcohol
Platte	6	1	16.67%
DCI			
Guernsey PD			
Other	1	1	100.00%
Platte SO	4		
Wheatland PD	1		
WHP			

Felony Offenses-Alcohol Involvement

County Department	Felony Offenses	Number Involving Alcohol	Percent of Felony Offenses Involving Alcohol
Platte	17	2	11.76%
DCI	1		
Guernsey PD			
Other			
Platte SO	5		
Wheatland PD	7	2	28.57%
WHP	4		

Resisting Arrest-Alcohol Involvement

County Department	Resisting Arrest Offenses	Number Involving Alcohol	Percent of Resisting Arrest Offenses Involving Alcohol
Platte	2	2	100.00%
DCI			
Guernsey PD			
Other			
Platte SO	1	1	100.00%
Wheatland PD	1	1	100.00%
WHP			

Misdemeanor Offenses-Alcohol Involvement

County Department	Misdemeanor Offenses	Number Involving Alcohol	Percent of Misdemeanor Offenses Involving Alcohol
Platte	115	67	58.26%
DCI	6	1	16.67%
Guernsey PD	3	1	33.33%
Other	8	7	87.50%
Platte SO	26	12	46.15%
Wheatland PD	58	39	67.24%
WHP	14	7	50.00%

Assault-Alcohol Involvement

County Department	Assault Offenses	Number Involving Alcohol	Percent of Assault Offenses Involving Alcohol
Platte	6	3	50.00%
DCI			
Guernsey PD	1		
Other	1	1	100.00%
Platte SO	3	1	33.33%
Wheatland PD	1	1	100.00%
WHP			

Location of Alcohol Consumption and Point of Sale by Department

<i>Department</i>	<i>Alcohol Involved</i>	<i>Location of Consumption</i>						<i>Point of Sale</i>					
		<i>Home</i>	<i>Bar</i>	<i>Party</i>	<i>Car</i>	<i>Other</i>	<i>No Response</i>	<i>Home</i>	<i>Bar</i>	<i>Drive Up</i>	<i>Party</i>	<i>Liquor Store</i>	<i>No Response</i>
DCI	1						1						1
Guernsey PD	1				1						1		
Other	9			4		5	1					7	2
Platte SO	17	2	1	8	2	3	1	1	1		6	3	6
Wheatland PD	41	8	15	3	4	1	10	6	15	1	4	4	11
WHP	7		4		1	2		1	4	1			1
<i>Platte County Totals</i>	76	10	20	15	8	11	13	8	20	2	11	14	21

Location of Alcohol Consumption

<i>Department</i>	<i>Bar Name</i>	<i>Number of Reports</i>
Wheatland PD	Commadore	9
	Landmark	3
	Vimbo's	2
WHP	Commadore	1

Sheridan County
April 1, 2006 – September 30, 2006

Numbers by Department

<i>County</i>	<i>Total</i>			<i>Domestic</i>	<i>Resisting</i>		<i>Public</i>	<i>Alcohol</i>	<i>Traffic</i>			<i>Unknown</i>	<i>Ave.</i>
<i>Department</i>	<i>Offenses</i>	<i>Misdemeanor</i>	<i>Felony</i>	<i>Violence</i>	<i>Arrest</i>	<i>Assault</i>	<i>Intoxication</i>	<i>Involved</i>	<i>Crash</i>	<i>Female</i>	<i>Male</i>	<i>Gender</i>	<i>Age</i>
Sheridan	468	353	32	32	6	9	32	299	22	90	369	9	33.55
DCI	14	2	1					1		6	8		28.71
Other *	6	3	1							1	5		28.50
Ranchester PD	2	1	1			1		2			2		25.50
Sheridan PD	266	205	8	23	5	3	29	201	13	55	205	6	34.15
Sheridan SO	165	129	21	9	1	5	2	83	8	22	140	3	33.13
WHP	15	13					1	12	1	6	9		36.00

Percents by Department

<i>County</i>	<i>Total</i>			<i>Domestic</i>	<i>Resisting</i>		<i>Public</i>	<i>Alcohol</i>	<i>Traffic</i>			<i>Unknown</i>
<i>Department</i>	<i>Offenses</i>	<i>Misdemeanor</i>	<i>Felony</i>	<i>Violence</i>	<i>Arrest</i>	<i>Assault</i>	<i>Intoxication</i>	<i>Involved</i>	<i>Crash</i>	<i>Female</i>	<i>Male</i>	<i>Gender</i>
Sheridan	468	75.43%	6.84%	6.84%	1.28%	1.92%	6.84%	63.89%	4.70%	19.23%	78.85%	1.92%
DCI	14	14.29%	7.14%					7.14%		42.86%	57.14%	
Other	6	50.00%	16.67%							16.67%	83.33%	
Ranchester PD	2	50.00%	50.00%			50.00%		100.00%			100.00%	
Sheridan PD	266	77.07%	3.01%	8.65%	1.88%	1.13%	10.90%	75.56%	4.89%	20.68%	77.07%	2.26%
Sheridan SO	165	78.18%	12.73%	5.45%	0.61%	3.03%	1.21%	50.30%	4.85%	13.33%	84.85%	1.82%
WHP	15	86.67%					6.67%	80.00%	6.67%	40.00%	60.00%	

* "Other" includes: Court (1), Game & Fish (2), Other (2) and a single record which indicated no department.

MIP Arrests

<i>County</i>	<i>DUI</i>	<i>MIP</i>	<i>% MIP</i>	<i>Average</i>
<i>Department</i>	<i>Offenses</i>	<i>Arrests</i>	<i>to DUI</i>	<i>MIP BAC</i>
Sheridan	96	5	5.21%	0.1196
DCI				
Other				
Ranchester PD	1			
Sheridan PD	57	5	8.77%	0.1196
Sheridan SO	31			
WHP	7			

DUI Arrests

<i>County</i>	<i>Total</i>	<i>DUI</i>	<i>% DUI</i>	<i>Ave.</i>	<i>Open</i>	<i>Passenger</i>
<i>Department</i>	<i>Offenses</i>	<i>Offenses</i>	<i>Of Total</i>	<i>BAC</i>	<i>Container</i>	<i>in Vehicle</i>
Sheridan	468	96	20.51%	0.1712	4	3
DCI	14					
Other	6					
Ranchester PD	2	1	50.00%	0.2500		
Sheridan PD	266	57	21.43%	0.1773	3	2
Sheridan SO	165	31	18.79%	0.1561	1	
WHP	15	7	46.67%	0.1777		1

Underage DUI Arrests

<i>County</i>	<i>DUI</i>	<i>Underage</i>	<i>% DUI</i>	<i>Ave.</i>	<i>Open</i>	<i>Passenger</i>
<i>Department</i>	<i>Offenses</i>	<i>Offenses</i>	<i>Of Total</i>	<i>BAC</i>	<i>Container</i>	<i>in Vehicle</i>
Sheridan	96	13	13.54%	0.1358	2	2
DCI						
Other						
Ranchester PD	1					
Sheridan PD	57	8	14.04%	0.1418	2	2
Sheridan SO	31	5	16.13%	0.1264		
WHP	7					

Meth, Drugs and Public Intoxication

<i>County</i>	<i>Total</i>	<i>Meth</i>	<i>Other</i>	<i>Public</i>	<i>Pub. Intox.</i>
<i>Department</i>	<i>Offenses</i>	<i>Involved</i>	<i>Drugs</i>	<i>Intox.</i>	<i>Ave. BAC</i>
Sheridan	468	13	23	32	0.2219
DCI	14	7	3		
Other	6				
Ranchester PD	2				
Sheridan PD	266	2	8	29	0.2187
Sheridan SO	165	4	9	2	0.2315
WHP	15		3	1	

Traffic Crashes

<i>County</i>	<i>Traffic</i>	<i>Alcohol</i>	<i>Wearing</i>	<i>Average</i>
<i>Department</i>	<i>Crashes</i>	<i>Involved</i>	<i>Seatbelt</i>	<i>BAC</i>
Sheridan	22	21	5	0.1682
DCI				
Other				
Ranchester PD				
Sheridan PD	13	12	2	0.1851
Sheridan SO	8	8	2	0.1387
WHP	1	1	1	0.1380

Total Offenses-Alcohol Involvement

County Department	Total Offenses	Number Involving Alcohol	Percent of Total Involving Alcohol
Sheridan	468	299	63.89%
DCI	14	1	7.14%
Other	6		
Ranchester PD	2	2	100.00%
Sheridan PD	266	201	75.56%
Sheridan SO	165	83	50.30%
WHP	15	12	80.00%

Felony Offenses-Alcohol Involvement

County Department	Felony Offenses	Number Involving Alcohol	Percent of Felony Offenses Involving Alcohol
Sheridan	32	5	15.63%
DCI	1	1	100.00%
Other	1		
Ranchester PD	1	1	100.00%
Sheridan PD	8	2	25.00%
Sheridan SO	21	1	4.76%
WHP			

Misdemeanor Offenses-Alcohol Involvement

County Department	Misdemeanor Offenses	Number Involving Alcohol	Percent of Misdemeanor Offenses Involving Alcohol
Sheridan	353	238	67.42%
DCI	2		
Other	3		
Ranchester PD	1	1	100.00%
Sheridan PD	205	153	74.63%
Sheridan SO	129	74	57.36%
WHP	13	10	76.92%

Domestic Violence-Alcohol Involvement

County Department	Domestic Violence Offenses	Number Involving Alcohol	Percent of Domestic Violence Offenses Involving Alcohol
Sheridan	32	19	59.38%
DCI			
Other			
Ranchester PD			
Sheridan PD	23	17	73.91%
Sheridan SO	9	2	22.22%
WHP			

Resisting Arrest-Alcohol Involvement

County Department	Resisting Arrest Offenses	Number Involving Alcohol	Percent of Resisting Arrest Offenses Involving Alcohol
Sheridan	6	5	83.33%
DCI			
Other			
Ranchester PD			
Sheridan PD	5	4	80.00%
Sheridan SO	1	1	100.00%
WHP			

Assault-Alcohol Involvement

County Department	Assault Offenses	Number Involving Alcohol	Percent of Assault Offenses Involving Alcohol
Sheridan	9	4	44.44%
DCI			
Other			
Ranchester PD	1	1	100.00%
Sheridan PD	3	1	33.33%
Sheridan SO	5	2	40.00%
WHP			

Location of Alcohol Consumption and Point of Sale by Department

<i>Department</i>	<i>Location of Consumption</i>							<i>Point of Sale</i>					
	<i>Alcohol Involved</i>	<i>Home</i>	<i>Bar</i>	<i>Party</i>	<i>Car</i>	<i>Other</i>	<i>No Response</i>	<i>Home</i>	<i>Bar</i>	<i>Drive Up</i>	<i>Party</i>	<i>Liquor Store</i>	<i>No Response</i>
DCI	1	1							1				
Other													
Ranchester PD	2		1	1					1		1		
Sheridan PD	201	30	79	14	3	9	66	19	82	4	15	9	73
Sheridan SO	83	14	30	7	3	2	28	4	31	2	6	9	31
WHP	12	1	2	1	1	1	6	1	3			2	6
<i>Sheridan County Totals</i>	299	45	112	23	7	12	100	24	118	6	22	20	110

Location of Alcohol Consumption

<i>Department</i>	<i>Bar Name</i>	<i>Number of Reports</i>	
Ranchester PD	Ranchester Liquor	1	
Sheridan PD	Beaver Creek	4	
	Caboose	2	
	Crazy Woman	1	
	Mint Bar	4	
	OK Corral	1	
	Rainbow	9	
	Scoter's	2	
	Sutton's	2	
	TNC Liquor	1	
	Sheridan SO	Bighorn Lodge	2
		Crazy Woman	3
Kurby		1	
Mint Bar		1	
My Buddy's Place		1	
Rainbow		1	
Red Dawg Saloon		1	
Scoter's		1	
Silver Spur		2	
Sutton's		1	

Sublette County
April 1, 2006 – September 30, 2006

Numbers by Department

<i>County Department</i>	<i>Total Offenses</i>	<i>Misdemeanor</i>	<i>Felony</i>	<i>Domestic Violence</i>	<i>Resisting Arrest</i>	<i>Assault</i>	<i>Public Intoxication</i>	<i>Alcohol Involved</i>	<i>Traffic Crash</i>	<i>Female</i>	<i>Male</i>	<i>Unknown Gender</i>	<i>Ave. Age</i>
Sublette	149	125	14	11	2	13	11	92	4	11	135	3	33.25
DOC	1		1								1		35.00
LaBarge PD	1	1									1		17.00
Sublette SO	132	109	13	11	2	13	11	81	2	7	122	3	33.36
WHP	15	15						11	2	4	11		33.40

Percents by Department

<i>County Department</i>	<i>Total Offenses</i>	<i>Misdemeanor</i>	<i>Felony</i>	<i>Domestic Violence</i>	<i>Resisting Arrest</i>	<i>Assault</i>	<i>Public Intoxication</i>	<i>Alcohol Involved</i>	<i>Traffic Crash</i>	<i>Female</i>	<i>Male</i>	<i>Unknown Gender</i>
Sublette	149	83.89%	9.40%	7.38%	1.34%	8.72%	7.38%	61.74%	2.68%	7.38%	90.60%	2.01%
DOC	1		100.00%								100.00%	
LaBarge PD	1	100.00%									100.00%	
Sublette SO	132	82.58%	9.85%	8.33%	1.52%	9.85%	8.33%	61.36%	1.52%	5.30%	92.42%	2.27%
WHP	15	100.00%						73.33%	13.33%	26.67%	73.33%	

MIP Arrests

<i>County</i>	<i>DUI</i>	<i>MIP</i>	<i>% MIP to</i>	<i>Average</i>
<i>Department</i>	<i>Offenses</i>	<i>Arrests</i>	<i>DUI</i>	<i>MIP BAC</i>
Sublette	21	1	4.76%	0.0400
DOC				
LaBarge PD				
Sublette SO	14	1	7.14%	0.0400
WHP	7			

Meth, Drugs and Public Intoxication

<i>County</i>	<i>Total</i>	<i>Meth</i>	<i>Other</i>	<i>Public</i>	<i>Pub. Intox.</i>
<i>Department</i>	<i>Offenses</i>	<i>Involved</i>	<i>Drugs</i>	<i>Intox.</i>	<i>Average</i>
			<i>Involved</i>		<i>BAC</i>
Sublette	149	3	12	11	0.1700
DOC	1				
LaBarge PD	1		1		
Sublette SO	132	3	10	11	0.1700
WHP	15		1		

DUI Arrests

<i>County</i>	<i>Total</i>	<i>DUI</i>	<i>% DUI</i>	<i>Average</i>	<i>Open</i>	<i>Passenger</i>
<i>Department</i>	<i>Offenses</i>	<i>Offenses</i>	<i>Of Total</i>	<i>BAC</i>	<i>Container</i>	<i>in Vehicle</i>
Sublette	149	21	14.09%	0.1654	4	2
DOC	1					
LaBarge PD	1					
Sublette SO	132	14	10.61%	0.1713	2	1
WHP	15	7	46.67%	0.1537	2	1

Traffic Crashes

<i>County</i>	<i>Traffic</i>	<i>Alcohol</i>	<i>Wearing</i>	<i>Average</i>
<i>Department</i>	<i>Crashes</i>	<i>Involved</i>	<i>Seatbelt</i>	<i>BAC</i>
Sublette	4	4	2	0.1550
DOC				
LaBarge PD				
Sublette SO	2	2	1	0.1550
WHP	2	2	1	

Underage DUI Arrests

<i>County</i>	<i>DUI</i>	<i>Underage</i>	<i>% DUI</i>	<i>Average</i>	<i>Open</i>	<i>Passenger</i>
<i>Department</i>	<i>Offenses</i>	<i>Offenses</i>	<i>Of Total</i>	<i>BAC</i>	<i>Container</i>	<i>in Vehicle</i>
Sublette	21	1	4.76%	0.1200	0	0
DOC						
LaBarge PD						
Sublette SO	14	1	7.14%	0.1200		
WHP	7					

Total Offenses-Alcohol Involvement

<i>County Department</i>	<i>Total Offenses</i>	<i>Number Involving Alcohol</i>	<i>Percent of Total Involving Alcohol</i>
Sublette	149	92	61.74%
DOC	1		
LaBarge PD	1		
Sublette SO	132	81	61.36%
WHP	15	11	73.33%

Domestic Violence-Alcohol Involvement

<i>County Department</i>	<i>Domestic Violence Offenses</i>	<i>Number Involving Alcohol</i>	<i>Percent of Domestic Violence Offenses Involving Alcohol</i>
Sublette	11	9	81.82%
DOC			
LaBarge PD			
Sublette SO	11	9	81.82%
WHP			

Felony Offenses-Alcohol Involvement

<i>County Department</i>	<i>Felony Offenses</i>	<i>Number Involving Alcohol</i>	<i>Percent of Felony Offenses Involving Alcohol</i>
Sublette	14	6	42.86%
DOC	1		
LaBarge PD			
Sublette SO	13	6	46.15%
WHP			

Resisting Arrest-Alcohol Involvement

<i>County Department</i>	<i>Resisting Arrest Offenses</i>	<i>Number Involving Alcohol</i>	<i>Percent of Resisting Arrest Offenses Involving Alcohol</i>
Sublette	2	1	50.00%
DOC			
LaBarge PD			
Sublette SO	2	1	50.00%
WHP			

Misdemeanor Offenses-Alcohol Involvement

<i>County Department</i>	<i>Misdemeanor Offenses</i>	<i>Number Involving Alcohol</i>	<i>Percent of Misdemeanor Offenses Involving Alcohol</i>
Sublette	125	79	63.20%
DOC			
LaBarge PD	1		
Sublette SO	109	68	62.39%
WHP	15	11	73.33%

Assault-Alcohol Involvement

<i>County Department</i>	<i>Assault Offenses</i>	<i>Number Involving Alcohol</i>	<i>Percent of Assault Offenses Involving Alcohol</i>
Sublette	13	11	84.62%
DOC			
LaBarge PD			
Sublette SO	13	11	84.62%
WHP			

Location of Alcohol Consumption and Point of Sale by Department

<i>Department</i>	<i>Alcohol Involved</i>	<i>Location of Consumption</i>						<i>Point of Sale</i>					
		<i>Home</i>	<i>Bar</i>	<i>Party</i>	<i>Car</i>	<i>Other</i>	<i>No Response</i>	<i>Home</i>	<i>Bar</i>	<i>Drive Up</i>	<i>Party</i>	<i>Liquor Store</i>	<i>No Response</i>
DOC													
LaBarge PD													
Sublette SO	81	13	37		2	7	22	9	40		2	6	24
WHP	11	1	6	1	2	1	1	1	5		1	3	1
<i>Sublette County Totals</i>	92	14	43	1	4	8	23	10	45	0	3	9	25

Location of Alcohol Consumption

<i>Department</i>	<i>Bar Name</i>	<i>Number of Reports</i>	
Sublette SO	Bottoms Up	1	
	Corral Bar	7	
	Eden Bar	1	
	Legal Bar	1	
	Silver Spur	7	
	Stockman's	5	
	The Place	1	
	Waterhole	2	
	WHP	Corral Bar	2
		Cowboy	1
Lakeside		1	
Millenium		1	
The Place		1	

Sweetwater County
April 1, 2006 – September 30, 2006

Numbers by Department

<i>County</i> <i>Department</i>	<i>Total</i> <i>Offenses</i>	<i>Misdemeanor</i>	<i>Felony</i>	<i>Domestic</i> <i>Violence</i>	<i>Resisting</i> <i>Arrest</i>	<i>Assault</i>	<i>Public</i> <i>Intoxication</i>	<i>Alcohol</i> <i>Involved</i>	<i>Traffic</i> <i>Crash</i>	<i>Female</i>	<i>Male</i>	<i>Unknown</i> <i>Gender</i>	<i>Ave.</i> <i>Age</i>
Sweetwater	1210	1029	116	57	20	19	166	648	50	218	985	117	31.40
Bairoil PD	1	1						1			1		20.00
DCI	3		3								3		30.67
Green River PD	153	129	18	12	7	6	19	95	4	32	121		31.90
Other *	78	58	12	5		1		5		14	64		32.14
Rock Sprgs PD	618	540	53	18	9	7	139	370	30	115	498	115	31.74
Sweetwater SO	281	236	21	20	4	5	8	129	6	46	234	1	29.72
Wamsutter PD	2	2						2	1		2		49.00
WHP	74	63	9	2				46	9	11	62	1	32.75

Percents by Department

<i>County</i> <i>Department</i>	<i>Total</i> <i>Offenses</i>	<i>Misdemeanor</i>	<i>Felony</i>	<i>Domestic</i> <i>Violence</i>	<i>Resisting</i> <i>Arrest</i>	<i>Assault</i>	<i>Public</i> <i>Intoxication</i>	<i>Alcohol</i> <i>Involved</i>	<i>Traffic</i> <i>Crash</i>	<i>Female</i>	<i>Male</i>	<i>Unknown</i> <i>Gender</i>
Sweetwater	1210	85.04%	9.59%	4.71%	1.65%	1.57%	13.72%	53.55%	4.13%	18.02%	81.40%	9.67%
Bairoil PD	1	100.00%						100.00%			100.00%	
DCI	3		100.00%								100.00%	
Green River PD	153	84.31%	11.76%	7.84%	4.58%	3.92%	12.42%	62.09%	2.61%	20.92%	79.08%	
Other	78	74.36%	15.38%	6.41%		1.28%		6.41%		17.95%	82.05%	
Rock Sprgs PD	618	87.38%	8.58%	2.91%	1.46%	1.13%	22.49%	59.87%	4.85%	18.61%	80.58%	18.61%
Sweetwater SO	281	83.99%	7.47%	7.12%	1.42%	1.78%	2.85%	45.91%	2.14%	16.37%	83.27%	0.36%
Wamsutter PD	2	100.00%						100.00%	50.00%		100.00%	
WHP	74	85.14%	12.16%	2.70%				62.16%	12.16%	14.86%	83.78%	1.35%

* "Other" includes: Court (12), Game & Fish (2), Jail Sanction (2), Probation & Parole (3), RSMC (2), SCCE (11), SCCW (4), SCLE (1), Self (1), US Marshal (2) and those reports which did not indicate a department or for which the department was listed as "other" (38).

MIP Arrests

County Department	DUI Offenses	MIP Arrests	% MIP to DUI	Average MIP BAC
Sweetwater	189	8	4.23%	0.1183
Bairoil PD				
DCI				
Green River PD	24	1	4.17%	0.2600
Other *	1	1	100.00%	0.0200
Rock Sprgs PD	80	4	5.00%	0.1203
Sweetwater SO	58	1	1.72%	0.1100
Wamsutter PD	1			
WHP	25	1	4.00%	0.1040

DUI Arrests

County Department	Total Offenses	DUI Offenses	% DUI Of Total	Ave. BAC	Open Container	Passenger in Vehicle
Sweetwater	1210	189	15.62%	0.1618	13	14
Bairoil PD	1					
DCI	3					
Green River PD	153	24	15.69%	0.1677	2	3
Other *	78	1	1.28%	0.0200		
Rock Sprgs PD	618	80	12.94%	0.1553	7	6
Sweetwater SO	281	58	20.64%	0.1653	3	4
Wamsutter PD	2	1	50.00%	0.2000		
WHP	74	25	33.78%	0.1672	1	1

Underage DUI Arrests

County Department	DUI Offenses	Underage Offenses	% DUI Of Total	Ave. BAC	Open Container	Passenger in Vehicle
Sweetwater	189	20	10.58%	0.1401	5	3
Bairoil PD						
DCI						
Green River PD	24	1	4.17%	0.1100		
Other *	1					
Rock Sprgs PD	80	9	11.25%	0.1607	3	2
Sweetwater SO	58	4	6.90%	0.1208	1	1
Wamsutter PD	1					
WHP	25	6	24.00%	0.1272	1	

Meth, Drugs and Public Intoxication

County Department	Total Offenses	Meth Involved	Other Drugs Involved	Public Intox.	Pub. Intox. Ave. BAC
Sweetwater	1210	36	68	166	0.1658
Bairoil PD	1				
DCI	3		1		
Green River PD	153	1	11	19	0.2100
Other *	78	4	3		
Rock Sprgs PD	618	26	31	139	0.1601
Sweetwater SO	281	5	14	8	0.1683
Wamsutter PD	2		1		
WHP	74		7		

Traffic Crashes

County Department	Traffic Crashes	Alcohol Involved	Wearing Seatbelt	Average BAC
Sweetwater	50	48	9	0.1943
Bairoil PD				
DCI				
Green River PD	4	4		0.1200
Other *				
Rock Sprgs PD	30	28	3	0.1987
Sweetwater SO	6	6	1	0.2308
Wamsutter PD	1	1		0.2000
WHP	9	9	5	0.1773

Total Offenses-Alcohol Involvement

County Department	Total Offenses	Number Involving Alcohol	Percent of Total Involving Alcohol
Sweetwater	1210	648	53.55%
Bairoil PD	1	1	100.00%
DCI	3		
Green River PD	153	95	62.09%
Other *	78	5	6.41%
Rock Sprgs PD	618	370	59.87%
Sweetwater SO	281	129	45.91%
Wamsutter PD	2	2	100.00%
WHP	74	46	62.16%

Felony Offenses-Alcohol Involvement

County Department	Felony Offenses	Number Involving Alcohol	Percent of Felony Offenses Involving Alcohol
Sweetwater	116	27	23.28%
Bairoil PD			
DCI	3		
Green Rvr PD	18	6	33.33%
Other *	12		
Rock Sprgs PD	53	14	26.42%
Sweetwater SO	21	6	28.57%
Wamsutter PD			
WHP	9	1	11.11%

Misdemeanor Offenses-Alcohol Involvement

County Department	Misdemeanor Offenses	Number Involving Alcohol	Percent of Misdemeanor Offenses Involving Alcohol
Sweetwater	1029	592	57.53%
Bairoil PD	1	1	100.00%
DCI			
Green River PD	129	85	65.89%
Other *	58	5	8.62%
Rock Sprgs PD	540	339	62.78%
Sweetwater SO	236	117	49.58%
Wamsutter PD	2	2	100.00%
WHP	63	43	68.25%

Domestic Violence-Alcohol Involvement

County Department	Domestic Violence Offenses	Number Involving Alcohol	Percent of Domestic Violence Offenses Involving Alcohol
Sweetwater	57	31	54.39%
Bairoil PD			
DCI			
Green River PD	12	7	58.33%
Other *	5		
Rock Sprgs PD	18	13	72.22%
Sweetwater SO	20	9	45.00%
Wamsutter PD			
WHP	2	2	100.00%

Resisting Arrest-Alcohol Involvement

County Department	Resisting Arrest Offenses	Number Involving Alcohol	Percent of Resisting Arrest Offenses Involving Alcohol
Sweetwater	20	13	65.00%
Bairoil PD			
DCI			
Green River PD	7	5	71.43%
Other *			
Rock Sprgs PD	9	6	66.67%
Sweetwater SO	4	2	50.00%
Wamsutter PD			
WHP			

Assault-Alcohol Involvement

County Department	Assault Offenses	Number Involving Alcohol	Percent of Assault Offenses Involving Alcohol
Sweetwater	19	10	52.63%
Bairoil PD			
DCI			
Green River PD	6	2	33.33%
Other *	1		
Rock Sprgs PD	7	6	85.71%
Sweetwater SO	5	2	40.00%
Wamsutter PD			
WHP			

Location of Alcohol Consumption and Point of Sale by Department

<i>Department</i>	<i>Alcohol Involved</i>	<i>Location of Consumption</i>						<i>Point of Sale</i>					
		<i>Home</i>	<i>Bar</i>	<i>Party</i>	<i>Car</i>	<i>Other</i>	<i>No Response</i>	<i>Home</i>	<i>Bar</i>	<i>Drive Up</i>	<i>Party</i>	<i>Liquor Store</i>	<i>No Response</i>
Bairoil PD	1						1						1
DCI													
Green River PD	95	22	33	8	2	6	26	10	34	5	8	5	34
Other *	5			1			4						5
Rock Sprgs PD	370	46	145	30	6	13	132	34	144	2	28	25	137
Sweetwater SO	129	16	37	18	7	7	44	9	39	4	17	10	50
Wamsutter PD	2						2						2
WHP	46	4	17	6	5		14	7	16	1	4	2	16
<i>Sweetwater County Totals</i>	648	88	232	63	20	26	223	60	233	12	57	42	245

Location of Alcohol Consumption

<i>Department</i>	<i>Bar Name</i>	<i>Number of Reports</i>	
Green River PD	Astro Lounge	1	
	Clearview	1	
	Club 86	3	
	Cowboy	1	
	Eagles	1	
	Embassy	1	
	Green Gander	1	
	Mast	11	
	Ponderose	1	
	Porky's	1	
	Whispers	2	
	Wild Horse	1	
	Rock Springs PD	Astro Lounge	45
		Bombers	2
Budda Bob's		6	
Club Millenium		4	
Green Gander		1	
Joe's		1	
Johnny Mac's		4	
Killpeppers		17	
Klippers		3	
Knotty Pine		5	
Mast		1	
Park Hotel		3	
Poor House		2	
Porky's		4	
Satellite		10	
Windy City	13		

<i>Department</i>	<i>Bar Name</i>	<i>Number of Reports</i>
Sweetwater SO	Astro Lounge	7
	Boomer	1
	Brewery	1
	Budda Bob's	2
	Cruel Jack's	1
	Johnny Mac's	1
	Killpeppers	2
	Mill	1
	Park Hotel	3
	Porky's	1
	Sands	1
	Satellite	4
	Stock Exchange	1
	Wamsutter	1
	Whispers	1
	Windy City	1
	WHP	Astro Lounge
Diamondville		1
Mast		1
Poor House		1
Porky's		1
Satellite		2
White Mtn. Golf		1

Teton County
April 1, 2006 – September 30, 2006

Numbers by Department

<i>County Department</i>	<i>Total Offenses</i>	<i>Misdemeanor</i>	<i>Felony</i>	<i>Domestic Violence</i>	<i>Resisting Arrest</i>	<i>Assault</i>	<i>Public Intoxication</i>	<i>Alcohol Involved</i>	<i>Traffic Crash</i>	<i>Female</i>	<i>Male</i>	<i>Unknown Gender</i>	<i>Ave. Age</i>
Teton	674	619	46	25	4	12	194	453	17	79	593	2	33.00
Jackson PD	302	272	23	15	2	11	157	255	8	38	263	1	35.06
Other *	10	8	3				1	5			10		35.80
Park Service PD	54	52	2		1		13	48	2	8	46		31.52
Teton SO	255	238	17	10	1	1	22	120	4	29	225	1	30.81
WHP	53	49	1				1	25	3	4	49		32.50

Percents by Department

<i>County Department</i>	<i>Total Offenses</i>	<i>Misdemeanor</i>	<i>Felony</i>	<i>Domestic Violence</i>	<i>Resisting Arrest</i>	<i>Assault</i>	<i>Public Intoxication</i>	<i>Alcohol Involved</i>	<i>Traffic Crash</i>	<i>Female</i>	<i>Male</i>	<i>Unknown Gender</i>
Teton	674	91.84%	6.82%	3.71%	0.59%	1.78%	28.78%	67.21%	2.52%	11.72%	87.98%	0.30%
Jackson PD	302	90.07%	7.62%	4.97%	0.66%	3.64%	51.99%	84.44%	2.65%	12.58%	87.09%	0.33%
Other	10	80.00%	30.00%				10.00%	50.00%			100.00%	
Park Service PD	54	96.30%	3.70%		1.85%		24.07%	88.89%	3.70%	14.81%	85.19%	
Teton SO	255	93.33%	6.67%	3.92%	0.39%	0.39%	8.63%	47.06%	1.57%	11.37%	88.24%	0.39%
WHP	53	92.45%	1.89%				1.89%	47.17%	5.66%	7.55%	92.45%	

* "Other" includes: FBI (1), Game & Fish (3), Probation & Parole (1), USMS (2) and those records indicating no or "Other" department (3).

MIP Arrests

County Department	DUI Offenses	MIP Arrests	% MIP to DUI	Average MIP BAC
Teton	171	31	18.13%	0.1060
Jackson PD	68	5	7.35%	0.1222
Other	3			
Park Service PD	28	3	10.71%	0.1333
Teton SO	56	20	35.71%	0.1028
WHP	16	3	18.75%	0.07333

DUI Arrests

County Department	Total Offenses	DUI Offenses	% DUI Of Total	Average BAC	Open Container	Passenger in Vehicle
Teton	674	171	25.37%	0.1564		
Jackson PD	302	68	22.52%	0.1622	6	5
Other	10	3	30.00%	0.1437		
Park Service PD	54	28	51.85%	0.1404	8	5
Teton SO	255	56	21.96%	0.1548	5	4
WHP	53	16	30.19%	0.1680	2	1

Underage DUI Arrests

County Department	DUI Offenses	Underage Offenses	% DUI Of Total	Average BAC	Open Container	Passenger in Vehicle
Teton	171	17	9.94%	0.1031	4	3
Jackson PD	68	3	4.41%	0.1117		
Other	3					
Park Service PD	28	3	10.71%	0.0997	2	2
Teton SO	56	8	14.29%	0.1124	2	1
WHP	16	3	18.75%	0.0733		

Meth, Drugs and Public Intoxication

County Department	Total Offenses	Meth Involved	Other Drugs Involved	Public Intox.	Pub. Intox. Average BAC
Teton	674	1	28	194	0.1994
Jackson PD	302	1	19	157	0.1994
Other	10		1	1	0.0480
Park Service PD	54		3	13	0.2219
Teton SO	255		3	22	0.1920
WHP	53		2	1	

Traffic Crashes

County Department	Traffic Crashes	Alcohol Involved	Wearing Seatbelt	Average BAC
Teton	17	17	13	0.1918
Jackson PD	8	8	7	0.1843
Other				
Park Service PD	2	2	2	0.1055
Teton SO	4	4	2	0.2240
WHP	3	3	2	0.2560

Total Offenses-Alcohol Involvement

<i>County Department</i>	<i>Total Offenses</i>	<i>Number Involving Alcohol</i>	<i>Percent of Total Offenses Involving Alcohol</i>
Teton	674	453	67.21%
Jackson PD	302	255	84.44%
Other	10	5	50.00%
Park Service PD	54	48	88.89%
Teton SO	255	120	47.06%
WHP	53	25	47.17%

Domestic Violence-Alcohol Involvement

<i>County Department</i>	<i>Domestic Violence Offenses</i>	<i>Number Involving Alcohol</i>	<i>Percent of Domestic Violence Offenses Involving Alcohol</i>
Teton	25	13	52.00%
Jackson PD	15	10	66.67%
Other			
Park Service PD			
Teton SO	10	3	30.00%
WHP			

Felony Offenses-Alcohol Involvement

<i>County Department</i>	<i>Felony Offenses</i>	<i>Number Involving Alcohol</i>	<i>Percent of Felony Offenses Involving Alcohol</i>
Teton	46	11	23.91
Jackson PD	23	8	34.78
Other	3		
Park Service PD	2		
Teton SO	17	2	11.73
WHP	1	1	100.00%

Resisting Arrest-Alcohol Involvement

<i>County Department</i>	<i>Resisting Arrest Offenses</i>	<i>Number Involving Alcohol</i>	<i>Percent of Resisting Arrest Offenses Involving Alcohol</i>
Teton	4	1	25.00%
Jackson PD	2		
Other			
Park Service PD	1		
Teton SO	1	1	100.00%
WHP			

Misdemeanor Offenses-Alcohol Involvement

<i>County Department</i>	<i>Misdemeanor Offenses</i>	<i>Number Involving Alcohol</i>	<i>Percent of Misdemeanor Offenses Involving Alcohol</i>
Teton	619	435	70.27%
Jackson PD	272	239	87.87%
Other	8	5	62.50%
Park Service PD	52	48	92.31%
Teton SO	238	119	50.00%
WHP	49	24	48.98%

Assault-Alcohol Involvement

<i>County Department</i>	<i>Assault Offenses</i>	<i>Number Involving Alcohol</i>	<i>Percent of Assault Offenses Involving Alcohol</i>
Teton	12	5	41.67%
Jackson PD	11	4	36.36%
Other			
Park Service PD			
Teton SO	1	1	100.00%
WHP			

Location of Alcohol Consumption and Point of Sale by Department

<i>Department</i>	<i>Location of Consumption</i>							<i>Point of Sale</i>					
	<i>Alcohol Involved</i>	<i>Home</i>	<i>Bar</i>	<i>Party</i>	<i>Car</i>	<i>Other</i>	<i>No Response</i>	<i>Home</i>	<i>Bar</i>	<i>Drive Up</i>	<i>Party</i>	<i>Liquor Store</i>	<i>No Response</i>
Jackson PD	255	32	103	21	6	28	65	11	106		19	48	71
Other	5	2	1			1	1	1	1			2	1
Park Service PD	48	5	14	8	7	3	12	4	14	1	6	12	11
Teton SO	120	11	38	34	2	14	21	8	39	2	31	15	25
WHP	25	4	7	6		3	5	2	9		4	4	6
<i>Teton County Totals</i>	453	54	163	69	15	49	104	26	169	3	60	81	91

Location of Alcohol Consumption

<i>Department</i>	<i>Bar Name</i>	<i>Number of Reports</i>	<i>Department</i>	<i>Bar Name</i>	<i>Number of Reports</i>	
Jackson PD	43 North	6	Park Service PD	Cowboy	1	
	Cadillac Grill	1		Dornan's	1	
	Carlos	1		Elkhorn	1	
	Cowboy	16		Jackson Lake Lodge	2	
	Elkhorn	1		Log Cabin	2	
	Ella's Room	1		Rancher Bar	1	
	Eleanor's Covey	1		Stagecoach	1	
	Gibson's	1		Tog Mtn. Lodge	1	
	Log Cabin	9		Teton SO	43 North	1
	Moose	1			Cadillac Grill	1
	Rancher Bar	13	Cowboy		2	
	Ringer	1	Eleanor's Covey		1	
	Shady Lady	4	Log Cabin		4	
	Sidewinders	1	Mangy Moose		2	
	Silver Dollar	1	Spring Creek		1	
	Snow King	2	Stagecoach		6	
	Stagecoach	2	Teton Village		2	
	Liquor Store	1	Tog Mt. Lodge		1	
	Virginian	19	Virginian	4		
	Wagon Wheel	1	WHP	Wagon Wheel	1	
Other	43 North	1	Four Seasons	1		
			In Victor	1		
			Virginian	2		

Uinta County
April 1, 2006 – September 30, 2006

Numbers by Department

<i>County</i> <i>Department</i>	<i>Total</i> <i>Offenses</i>	<i>Misdemeanor</i>	<i>Felony</i>	<i>Domestic</i> <i>Violence</i>	<i>Resisting</i> <i>Arrest</i>	<i>Assault</i>	<i>Public</i> <i>Intoxication</i>	<i>Alcohol</i> <i>Involved</i>	<i>Traffic</i> <i>Crash</i>	<i>Female</i>	<i>Male</i>	<i>Unknown</i> <i>Gender</i>	<i>Ave.</i> <i>Age</i>
Uinta	283	242	23	22	1	8	23	171	9	48	227	8	34.07
Unknown	1	1						1			1		27.00
DCI	1		1								1		44.00
Evanston PD	176	147	14	17		6	23	112	7	28	143	5	34.70
Lyman PD	8	8		2				5		1	7		27.00
Mountain View PD	3	3						1			3		23.50
Uinta SO	72	64	8	3	1	2		38	2	15	56	1	32.02
WHP	22	19						14		4	16	2	40.76

Percents by Department

<i>County</i> <i>Department</i>	<i>Total</i> <i>Offenses</i>	<i>Misdemeanor</i>	<i>Felony</i>	<i>Domestic</i> <i>Violence</i>	<i>Resisting</i> <i>Arrest</i>	<i>Assault</i>	<i>Public</i> <i>Intoxication</i>	<i>Alcohol</i> <i>Involved</i>	<i>Traffic</i> <i>Crash</i>	<i>Female</i>	<i>Male</i>	<i>Unknown</i> <i>Gender</i>
Uinta	283	85.51%	8.13%	7.77%	0.35%	2.83%	8.13%	60.42%	3.18%	16.96%	80.21%	2.83%
Unknown	1	100.00%						100.00%			100.00%	
DCI	1		100.00%								100.00%	
Evanston PD	176	83.52%	7.95%	9.66%		3.41%	13.07%	63.64%	3.98%	15.91%	81.25%	2.84%
Lyman PD	8	100.00%		25.00%				62.50%		12.50%	87.50%	
Mtn. View PD	3	100.00%						33.33%			100.00%	
Uinta SO	72	88.89%	11.11%	4.17%	1.39%	2.78%		52.78%	2.78%	20.83%	77.78%	1.39%
WHP	22	86.36%						63.64%		18.18%	72.73%	9.09%

MIP Arrests

County Department	DUI Offenses	MIP Arrests	% MIP to DUI	Average MIP BAC
Uinta	74	8	10.81%	0.1381
Unknown				
DCI				
Evanston PD	41	5	12.20%	0.1118
Lyman PD	4	1	25.00%	0.1760
Mountain View PD				
Uinta SO	19	2	10.53%	0.1850
WHP	10			

DUI Arrests

County Department	Total Offenses	DUI Offenses	% DUI Of Total	Ave. BAC	Open Container	Passenger in Vehicle
Uinta	283	74	26.15%	0.1652	4	2
Unknown	1					
DCI	1					
Evanston PD	176	41	23.30%	0.1785	2	1
Lyman PD	8	4	50.00%	0.1338	1	1
Mountain View PD	3					
Uinta SO	72	19	26.39%	0.1447		
WHP	22	10	45.45%	0.1621	1	

Underage DUI Arrests

County Department	DUI Offenses	Underage Offenses	% DUI Of Total	Ave. BAC	Open Container	Passenger in Vehicle
Uinta	74	6	8.11%	0.1538	0	0
Unknown						
DCI						
Evanston PD	41	3	7.32%	0.1767		
Lyman PD	4	2	50.00%	0.1430		
Mountain View PD						
Uinta SO	19	1	5.26%	0.1070		
WHP	10					

Meth, Drugs and Public Intoxication

County Department	Total Offenses	Meth Involved	Other Drugs Involved	Public Intox.	Pub. Intox. Ave. BAC
Uinta	283	4	9	23	0.2018
Unknown	1				
DCI	1				
Evanston PD	176	1	4	23	0.2018
Lyman PD	8	1			
Mtn. View PD	3				
Uinta SO	72	2	1		
WHP	22		4		

Traffic Crashes

County Department	Traffic Crashes	Alcohol Involved	Wearing Seatbelt	Average BAC
Uinta	9	8	3	88.89%
Unknown				
DCI				
Evanston PD	7	7	3	100.00%
Lyman PD				
Mtn. View PD				
Uinta SO	2	1		50.00%
WHP				

Total Offenses-Alcohol Involvement

County Department	Total Offenses	Number Involving Alcohol	Percent of Total Involving Alcohol
Uinta	283	171	60.42%
Unknown	1	1	100.00%
DCI	1		
Evanston PD	176	112	63.64%
Lyman PD	8	5	62.50%
Mtn. View PD	3	1	33.33%
Uinta SO	72	38	52.78%
WHP	22	14	63.64%

Felony Offenses-Alcohol Involvement

County Department	Felony Offenses	Number Involving Alcohol	Percent of Felony Offenses Involving Alcohol
Uinta	23	4	17.39%
Unknown			
DCI	1		
Evanston PD	14	3	21.43%
Lyman PD			
Mtn. View PD			
Uinta SO	8	1	12.50%
WHP			

Misdemeanor Offenses-Alcohol Involvement

County Department	Misdemeanor Offenses	Number Involving Alcohol	Percent of Misdemeanor Offenses Involving Alcohol
Uinta	242	158	65.29%
Unknown	1	1	100.00%
DCI			
Evanston PD	147	100	68.03%
Lyman PD	8	5	62.50%
Mtn. View PD	3	1	33.33%
Uinta SO	64	38	59.38%
WHP	19	13	68.42%

Domestic Violence-Alcohol Involvement

County Department	Domestic Violence Offenses	Number Involving Alcohol	Percent of Domestic Violence Offenses Involving Alcohol
Uinta	22	8	36.36%
Unknown			
DCI			
Evanston PD	17	6	
Lyman PD	2	1	50.00%
Mtn. View PD			
Uinta SO	3	1	33.33%
WHP			

Resisting Arrest-Alcohol Involvement

County Department	Resisting Arrest Offenses	Number Involving Alcohol	Percent of Resisting Arrest Offenses Involving Alcohol
Uinta	1	0	0.00%
Unknown			
DCI			
Evanston PD			
Lyman PD			
Mtn. View PD			
Uinta SO	1		
WHP			

Assault-Alcohol Involvement

County Department	Assault Offenses	Number Involving Alcohol	Percent of Assault Offenses Involving Alcohol
Uinta	8	3	37.50%
Unknown			
DCI			
Evanston PD	6	3	50.00%
Lyman PD			
Mtn. View PD			
Uinta SO	2		
WHP			

Location of Alcohol Consumption and Point of Sale by Department

<i>Department</i>	<i>Alcohol Involved</i>	<i>Location of Consumption</i>						<i>Point of Sale</i>					
		<i>Home</i>	<i>Bar</i>	<i>Party</i>	<i>Car</i>	<i>Other</i>	<i>No Response</i>	<i>Home</i>	<i>Bar</i>	<i>Drive Up</i>	<i>Party</i>	<i>Liquor Store</i>	<i>No Response</i>
Unknown	1						1						1
DCI													
Evanston PD	112	16	33	11	3	3	48	5	33	4	9	10	51
Lyman PD	5	2	2				1	1	3				1
Mountain View PD	1						1						1
Uinta SO	38	5	15	1	1	3	13	2	16	1	1	4	14
WHP	14		2	1	3		7		2			4	7
<i>Uinta County Totals</i>	171	23	52	13	7	6	71	8	54	5	10	18	75

Location of Alcohol Consumption

<i>Department</i>	<i>Bar Name</i>	<i>Number of Reports</i>
Evanston PD	Don Pedro's	1
	Jack's River Pub	1
	Legal Tender	6
	Lotty's	4
	Veranda	2
Lyman PD	Cowboy Bar	1
Uinta SO	Bridger Valley	1
	Cowboy	3
	John's Bar	1
	LaBarge	1
	Legal Tender	1
	Lotty's	1
	Old Mill	1
	Veranda	1
	WHP	Legal Tender
	Lotty's	1

Washakie County
April 1, 2006 – September 30, 2006

Numbers by Department

<i>County</i> <i>Department</i>	<i>Total</i> <i>Offenses</i>	<i>Misdemeanor</i>	<i>Felony</i>	<i>Domestic</i> <i>Violence</i>	<i>Resisting</i> <i>Arrest</i>	<i>Assault</i>	<i>Public</i> <i>Intoxication</i>	<i>Alcohol</i> <i>Involved</i>	<i>Traffic</i> <i>Crash</i>	<i>Female</i>	<i>Male</i>	<i>Unknown</i> <i>Gender</i>	<i>Ave.</i> <i>Age</i>
Washakie	76	71	3	0	1	1	3	75	1	13	63	0	36.00
Newcastle PD	1	1									1		25.00
Washakie SO	30	26	2		1		2	30	1	5	25		38.05
WHP	12	12						12		3	9		35.82
Worland PD	33	32	1			1	1	33		5	28		34.77

Percents by Department

<i>County</i> <i>Department</i>	<i>Total</i> <i>Offenses</i>	<i>Misdemeanor</i>	<i>Felony</i>	<i>Domestic</i> <i>Violence</i>	<i>Resisting</i> <i>Arrest</i>	<i>Assault</i>	<i>Public</i> <i>Intoxication</i>	<i>Alcohol</i> <i>Involved</i>	<i>Traffic</i> <i>Crash</i>	<i>Female</i>	<i>Male</i>	<i>Unknown</i> <i>Gender</i>
Washakie	76	93.42%	3.95%		1.32%	1.32%	3.95%	98.68%	1.32%	17.11%	82.89%	
Newcastle PD	1	100.00%									100.00%	
Washakie SO	30	86.67%	6.67%		3.33%		6.67%	100.00%	3.33%	16.67%	83.33%	
WHP	12	100.00%						100.00%		25.00%	75.00%	
Worland PD	33	96.97%	3.03%			3.03%	3.03%	100.00%		15.15%	84.85%	

MIP Arrests

<i>County</i>	<i>DUI</i>	<i>MIP</i>	<i>% MIP to</i>	<i>Average</i>
<i>Department</i>	<i>Offenses</i>	<i>Arrests</i>	<i>DUI</i>	<i>MIP BAC</i>
Washakie	57	6	10.53%	0.1265
Newcastle PD				
Washakie SO	20	3	15.00%	0.1400
WHP	11	2	18.18%	0.0830
Worland PD	26	1	3.85%	0.1730

DUI Arrests

<i>County</i>	<i>Total</i>	<i>DUI</i>	<i>% DUI</i>	<i>Average</i>	<i>Open</i>	<i>Passenger</i>
<i>Department</i>	<i>Offenses</i>	<i>Offenses</i>	<i>Of Total</i>	<i>BAC</i>	<i>Container</i>	<i>in Vehicle</i>
Washakie	76	57	75.00%	0.1476	5	2
Newcastle PD	1					
Washakie SO	30	20	66.67%	0.1314	1	1
WHP	12	11	91.67%	0.1344	3	
Worland PD	33	26	78.79%	0.1657	1	1

Underage DUI Arrests

<i>County</i>	<i>DUI</i>	<i>Underage</i>	<i>% DUI</i>	<i>Average</i>	<i>Open</i>	<i>Passenger</i>
<i>Department</i>	<i>Offenses</i>	<i>Offenses</i>	<i>Of Total</i>	<i>BAC</i>	<i>Container</i>	<i>in Vehicle</i>
Washakie	57	5	8.77%	0.1092	1	1
Newcastle PD						
Washakie SO	20	1	5.00%	0.1500		
WHP	11	2	18.18%	0.0930	1	
Worland PD	26	2	7.69%	0.1050		1

Meth, Drugs and Public Intoxication

<i>County</i>	<i>Total</i>	<i>Meth</i>	<i>Other</i>	<i>Public</i>	<i>Pub. Intox.</i>
<i>Department</i>	<i>Offenses</i>	<i>Involved</i>	<i>Drugs</i>	<i>Intox.</i>	<i>Average</i>
			<i>Involved</i>		<i>BAC</i>
Washakie	76	0	2	3	No report
Newcastle PD	1				
Washakie SO	30		1	2	
WHP	12		1		
Worland PD	33			1	

Traffic Crashes

<i>County</i>	<i>Traffic</i>	<i>Alcohol</i>	<i>Wearing</i>	<i>Average</i>
<i>Department</i>	<i>Crashes</i>	<i>Involved</i>	<i>Seatbelt</i>	<i>BAC</i>
Washakie	1	1	0	No report
Newcastle PD				
Washakie SO	1	1		
WHP				
Worland PD				

Total Offenses-Alcohol Involvement

<i>County Department</i>	<i>Total Offenses</i>	<i>Number Involving Alcohol</i>	<i>Percent of Total Involving Alcohol</i>
Washakie	76	75	98.68%
Newcastle PD	1		
Washakie SO	30	30	100.00%
WHP	12	12	100.00%
Worland PD	33	33	100.00%

Domestic Violence-Alcohol Involvement

<i>County Department</i>	<i>Domestic Violence Offenses</i>	<i>Number Involving Alcohol</i>	<i>Percent of Domestic Violence Offenses Involving Alcohol</i>
Washakie	0	0	
Newcastle PD			
Washakie SO			
WHP			
Worland PD			

Felony Offenses-Alcohol Involvement

<i>County Department</i>	<i>Felony Offenses</i>	<i>Number Involving Alcohol</i>	<i>Percent of Felony Offenses Involving Alcohol</i>
Washakie	3	3	100.00%
Newcastle PD			
Washakie SO	2	2	100.00%
WHP			
Worland PD	1	1	100.00%

Resisting Arrest-Alcohol Involvement

<i>County Department</i>	<i>Resisting Arrest Offenses</i>	<i>Number Involving Alcohol</i>	<i>Percent of Resisting Arrest Offenses Involving Alcohol</i>
Washakie	1	1	100.00%
Newcastle PD			
Washakie SO	1	1	100.00%
WHP			
Worland PD			

Misdemeanor Offenses-Alcohol Involvement

<i>County Department</i>	<i>Misdemeanor Offenses</i>	<i>Number Involving Alcohol</i>	<i>Percent of Misdemeanor Offenses Involving Alcohol</i>
Washakie	71	70	98.59%
Newcastle PD	1		
Washakie SO	26	26	100.00%
WHP	12	12	100.00%
Worland PD	32	32	100.00%

Assault-Alcohol Involvement

<i>County Department</i>	<i>Assault Offenses</i>	<i>Number Involving Alcohol</i>	<i>Percent of Assault Offenses Involving Alcohol</i>
Washakie	1	1	100.00%
Newcastle PD			
Washakie SO			
WHP			
Worland PD	1	1	100.00%

Location of Alcohol Consumption and Point of Sale by Department

<i>Department</i>	<i>Alcohol Involved</i>	<i>Location of Consumption</i>						<i>Point of Sale</i>					
		<i>Home</i>	<i>Bar</i>	<i>Party</i>	<i>Car</i>	<i>Other</i>	<i>No Response</i>	<i>Home</i>	<i>Bar</i>	<i>Drive Up</i>	<i>Party</i>	<i>Liquor Store</i>	<i>No Response</i>
Newcastle PD													
Washakie SO	30		11	5	4	4	6		13		4	2	10
WHP	12		7	2	2		1	1	6		2		3
Worland PD	33	5	13	3		2	9	2	13		3	1	13
<i>Washakie County Totals</i>	75	5	31	10	6	6	16	3	32		9	3	26

Location of Alcohol Consumption

<i>Department</i>	<i>Bar Name</i>	<i>Number of Reports</i>
Washakie SO	Buffalo Rose	1
	Little Chief	1
	Rendezvous	2
WHP	Country Club	1
	Highway Bar	2
	Rendezvous	1
	RJ's	1
Worland PD	Rendezvous	1

Weston County
April 1, 2006 – September 30, 2006

Numbers by Department

<i>County Department</i>	<i>Total Offenses</i>	<i>Misdemeanor</i>	<i>Felony</i>	<i>Domestic Violence</i>	<i>Resisting Arrest</i>	<i>Assault</i>	<i>Public Intoxication</i>	<i>Alcohol Involved</i>	<i>Traffic Crash</i>	<i>Female</i>	<i>Male</i>	<i>Unknown Gender</i>	<i>Ave. Age</i>
Weston	52	48	3	2	1	1	0	37	5	6	46	0	37.74
Newcastle PD	34	32		2	1	1		22	4	4	30		31.13
Other	4	2	2					3			4		36.75
Upton PD	3	3	1					1	1		3		38.50
Weston SO	9	9						9		2	7		40.89
WHP	2	2						2			2		53.50

Percents by Department

<i>County Department</i>	<i>Total Offenses</i>	<i>Misdemeanor</i>	<i>Felony</i>	<i>Domestic Violence</i>	<i>Resisting Arrest</i>	<i>Assault</i>	<i>Public Intoxication</i>	<i>Alcohol Involved</i>	<i>Traffic Crash</i>	<i>Female</i>	<i>Male</i>	<i>Unknown Gender</i>
Weston	52	92.31%	5.77%	3.85%	1.92%	1.92%		71.15%	9.62%	11.54%	88.46%	
Newcastle PD	34	94.12%		5.88%	2.94%	2.94%		64.71%	11.76%	11.76%	88.24%	
Other	4	50.00%	50.00%					75.00%			100.00%	
Upton PD	3	100.00%	33.33%					33.33%	33.33%		100.00%	
Weston SO	9	100.00%						100.00%		22.22%	77.78%	
WHP	2	100.00%						100.00%			100.00%	

MIP Arrests

<i>County</i>	<i>DUI</i>	<i>MIP</i>	<i>% MIP to</i>	<i>Average</i>
<i>Department</i>	<i>Offenses</i>	<i>Arrests</i>	<i>DUI</i>	<i>MIP BAC</i>
Weston	18	1	5.56%	0.1900
Newcastle PD	11	1	9.09%	0.1900
Other				
Upton PD				
Weston SO	5			
WHP	2			

DUI Arrests

<i>County</i>	<i>Total</i>	<i>DUI</i>	<i>% DUI</i>	<i>Average</i>	<i>Open</i>	<i>Passenger</i>
<i>Department</i>	<i>Offenses</i>	<i>Offenses</i>	<i>Of Total</i>	<i>BAC</i>	<i>Container</i>	<i>in Vehicle</i>
Weston	52	18	34.62%	0.1583	0	0
Newcastle PD	34	11	32.35%	0.1496		
Other	4					
Upton PD	3					
Weston SO	9	5	55.56%	0.1762		
WHP	2	2	100.00%	0.1615		

Underage DUI Arrests

<i>County</i>	<i>DUI</i>	<i>Underage</i>	<i>% DUI</i>	<i>Average</i>	<i>Open</i>	<i>Passenger</i>
<i>Department</i>	<i>Offenses</i>	<i>Offenses</i>	<i>Of Total</i>	<i>BAC</i>	<i>Container</i>	<i>in Vehicle</i>
Weston	18	0				
Newcastle PD	11					
Other						
Upton PD						
Weston SO	5					
WHP	2					

Meth, Drugs and Public Intoxication

<i>County</i>	<i>Total</i>	<i>Meth</i>	<i>Other</i>	<i>Public</i>	<i>Pub. Intox.</i>
<i>Department</i>	<i>Offenses</i>	<i>Involved</i>	<i>Drugs</i>	<i>Intox.</i>	<i>Average</i>
			<i>Involved</i>		<i>BAC</i>
Weston	52	0	2	0	
Newcastle PD	34		2		
Other	4				
Upton PD	3				
Weston SO	9				
WHP	2				

Traffic Crashes

<i>County</i>	<i>Traffic</i>	<i>Alcohol</i>	<i>Wearing</i>	<i>Average</i>
<i>Department</i>	<i>Crashes</i>	<i>Involved</i>	<i>Seatbelt</i>	<i>BAC</i>
Weston	5	5	2	0.1000
Newcastle PD	4	4	2	0.1000
Other				
Upton PD	1	1		
Weston SO				
WHP				

Total Offenses-Alcohol Involvement

County Department	Total Offenses	Number Involving Alcohol	Percent of Total Involving Alcohol
Weston	52	37	71.15%
Newcastle PD	34	22	64.71%
Other	4	3	75.00%
Upton PD	3	1	33.33%
Weston SO	9	9	100.00%
WHP	2	2	100.00%

Domestic Violence-Alcohol Involvement

County Department	Domestic Violence Offenses	Number Involving Alcohol	Percent of Domestic Violence Offenses Involving Alcohol
Weston	2	1	50.00%
Newcastle PD	2	1	50.00%
Other			
Upton PD			
Weston SO			
WHP			

Felony Offenses-Alcohol Involvement

County Department	Felony Offenses	Number Involving Alcohol	Percent of Felony Offenses Involving Alcohol
Weston	3	2	66.67%
Newcastle PD			
Other	2	2	100.00%
Upton PD	1		
Weston SO			
WHP			

Resisting Arrest-Alcohol Involvement

County Department	Resisting Arrest Offenses	Number Involving Alcohol	Percent of Resisting Arrest Offenses Involving Alcohol
Weston	1	0	
Newcastle PD	1		
Other			
Upton PD			
Weston SO			
WHP			

Misdemeanor Offenses-Alcohol Involvement

County Department	Misdemeanor Offenses	Number Involving Alcohol	Percent of Misdemeanor Offenses Involving Alcohol
Weston	48	33	68.75%
Newcastle PD	32	20	62.50%
Other	2	1	50.00%
Upton PD	3	1	33.33%
Weston SO	9	9	100.00%
WHP	2	2	100.00%

Assault-Alcohol Involvement

County Department	Assault Offenses	Number Involving Alcohol	Percent of Assault Offenses Involving Alcohol
Weston	1	0	
Newcastle PD	1		
Other			
Upton PD			
Weston SO			
WHP			

Location of Alcohol Consumption and Point of Sale by Department

<i>Department</i>	<i>Alcohol Involved</i>	<i>Location of Consumption</i>					<i>Point of Sale</i>					
		<i>Home</i>	<i>Bar</i>	<i>Party</i>	<i>Car</i>	<i>Other</i>	<i>No Response</i>	<i>Home</i>	<i>Bar</i>	<i>Drive Up</i>	<i>Party</i>	<i>Liquor Store</i>
Newcastle PD	22	4	13	2	1	1	4	13		2	2	
Other	3		2			1		2				1
Upton PD	1	1					1					
Weston SO	9	3	2	1	1	2	2	2	1	1	3	
WHP	2	1	1				1	1				
<i>Weston County Totals</i>	37	9	18	3	2	4	8	18	1	3	5	1

Location of Alcohol Consumption

<i>Department</i>	<i>Bar Name</i>	<i>Number of Reports</i>
Newcastle PD	Drunken Dog	5
	Hank's	1
	Landmark	1
	Old Mill	2
	Vic's	1
Weston SO	Bar in Wright	1
	Hank's	1