



Featured Here:
Self Closing Face Mount Hinge in Satin Nickel.



FUNCTIONAL CABINET HARDWARE

INTRODUCTION
P. 170

FINISH INDEX
P. 172

PRODUCT LISTING
P. 174

SILVER TONES



14

Nickel



26

Polished Chrome



2G

"Perma-Brite" Zinc



G9

Sterling Nickel



G10

Satin Nickel



AS

Antique Silver



M26

Machine Chrome



AL

Aluminum



WN

Weathered Nickel

GOLD TONES



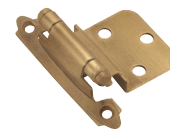
3

Polished Brass



PB

Polished Brass



GB

Gilded Bronze



AE

Antique Brass



BB

Burnished Brass



M3

Machine Brass

RUSTIC TONES



AC

Antique Copper

DARK TONES



WI

Wrought Iron



ORB

Oil-Rubbed Bronze



DAE

Dark Antique English



CB

Colonial Black



FB

Flat Black

COLORS



W

White



3W

White



A

Almond



PT

Plastic Tan



3PT

Plastic Tan



BR

Brown



BK

Black

TWO-TONE



AW

Aluminum / Wood Grain

DECORATIVE HARDWARE INSTALLATION TEMPLATES

These new templates take the guesswork out of installation! This easy-to-use solution makes cabinet hardware installation simple and saves time.

Product Number	Description
TMPDOOR (shown)	Cabinet Door Template
TMPDRWR (shown)	Cabinet Drawer Template
TMPMULTI (shown)	Cabinet Door and Drawer Template

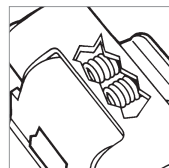
Pack type information can be located in the Product Index that begins on page 213.



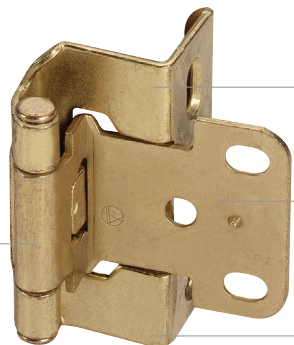
FULL WRAP

Features

- Choice of overlays from 1/4" to 5/8", plus 3/8" insert application
- Heavy-duty steel construction
- Wide range of mounting options
- Dual-spring mechanism for quiet, consistent self-closing power
- Choice of door wing styles and hole patterns



Dual-spring mechanism



Overlays from 1/4" to 5/8"

Choice of door wing styles and hole patterns

Heavy duty steel construction

SELF-CLOSING, FULL WRAP

Available Finish



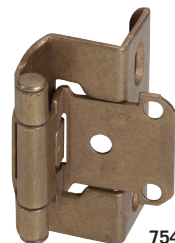
BB

A full finish index is located on pages 172-173.

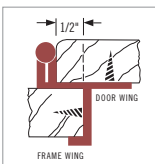
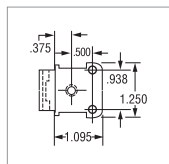
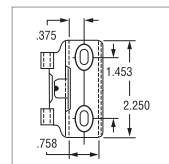
Product Number	Overlay
7540BB (shown)	1/2"

Screws: (2) #6 F.H. x 5/8"; (3) #5 F.H. x 1/2"

Pack type information can be located in the Product Index that begins on page 213.



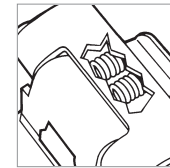
7540BB



PARTIAL WRAP

Features

- Choice of overlays from 13/64" to 1/2", plus 3/8" inset and reverse bevel applications
- Heavy-duty steel construction
- Wide range of mounting options
- Slotted holes for easy adjustment
- Dual-spring mechanism for quiet, consistent self-closing power
- Choice of door wing styles and hole patterns



Dual-spring mechanism



Overlays from 13/64" to 1/2"

Slotted holes

Choice of door wing styles and hole patterns

Heavy duty steel construction

SELF-CLOSING, PARTIAL WRAP

Available Finishes



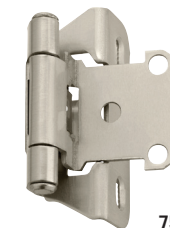
G10 BB ORB

A full finish index is located on pages 172-173.

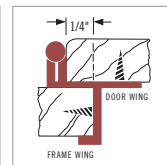
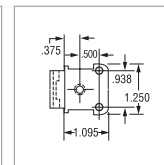
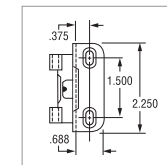
Product Number	Overlay
7566G10 (shown)	1/4"
7566BB	1/4"
7566ORB	1/4"

Screws: (2) #6 F.H. x 5/8"; (3) #5 F.H. x 1/2"

Pack type information can be located in the Product Index that begins on page 213.



7566G10



SELF-CLOSING, PARTIAL WRAP

Available Finishes

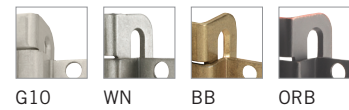


A full finish index is located on pages 172-173.

Product Number	Overlay
755014	1/2"
7550G10 (shown)	1/2"
7550WN	1/2"
75503	1/2"
7550BB	1/2"
7550WI	1/2"
7550ORB	1/2"
7550FB	1/2"
7550W	1/2"

Screws: (2) #6 F.H. x 5/8"; (3) #5 F.H. x 1/2"
Pack type information can be located in the Product Index that begins on page 213.

Available Finishes



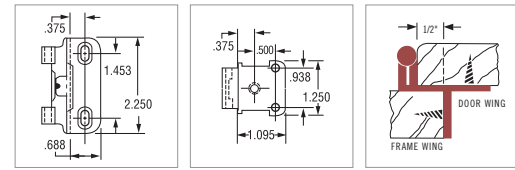
A full finish index is located on pages 172-173.

Product Number	Inset
7565G10	3/8"
7565WN	3/8"
7565BB	3/8"
7565ORB (shown)	3/8"

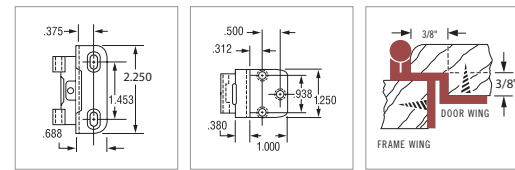
Screws: (2) #6 T.H. x 5/8"; (3) #6 O.H. x 1/2"
Pack type information can be located in the Product Index that begins on page 213.



7550G10



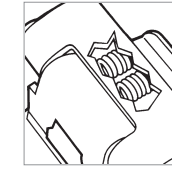
7565ORB



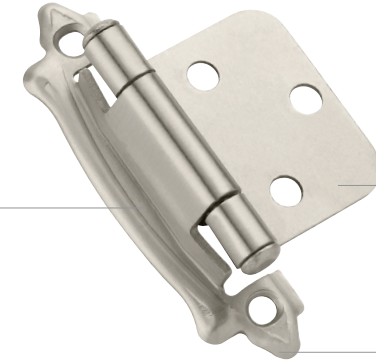
FACE MOUNT

Features

- Traditional, semi-concealed styling
- Choice of frame wing styles to coordinate with decorative hardware
- Reliable, self-closing power of dual compression springs
- Coordinating finishes



Dual-spring mechanism



Choice of decorative door wing styles and hole patterns

Variety of decorative frame wing styles

SELF-CLOSING, FACE MOUNT

Available Finish



26¹

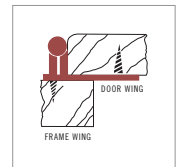
A full finish index is located on pages 172-173.

Product Number	Overlay
69201¹ (shown)	Variable

Screws: (2) #6 F.H. x 5/8"; (3) #6 F.H. x 1/2"
Pack type information can be located in the Product Index that begins on page 213.



69201¹



Available Finishes



26

3

AE

BB

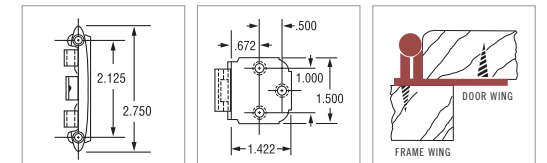
A full finish index is located on pages 172-173.

Product Number	Overlay
762926 (shown)	Variable
76293	Variable
7629AE	Variable
7629BB	Variable

Screws: (2) #5 O.H. x 5/8"; (3) #5 F.H. x 1/2"
Pack type information can be located in the Product Index that begins on page 213.

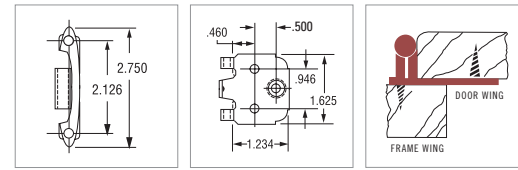
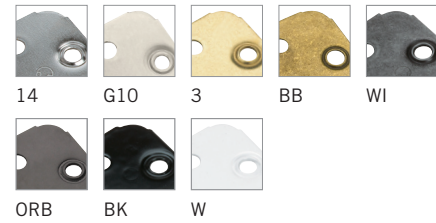


762926



SELF-CLOSING, FACE MOUNT

Available Finishes

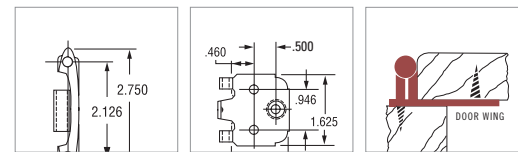
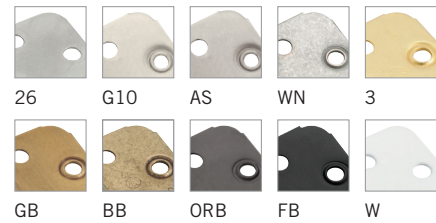


A full finish index is located on pages 172-173.

Product Number	Overlay
713914	Variable
7139G10	Variable
71393	Variable
7139BB	Variable
7139WI	Variable
71390RB (shown)	Variable
7139BK	Variable
7139W	Variable

Screws: (2) #6 O.H. x 5/8"; (3) #6 F.H. x 1/2"
Pack type information can be located in the Product Index that begins on page 213.

Available Finishes



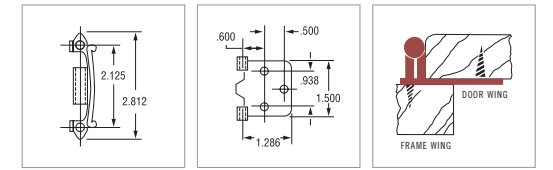
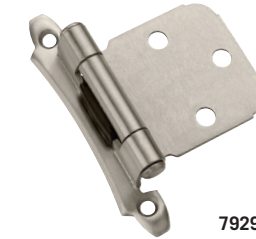
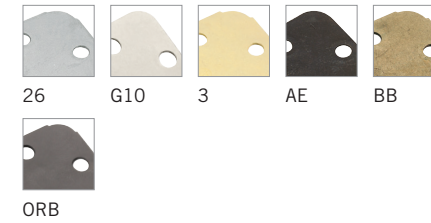
A full finish index is located on pages 172-173.

Product Number	Overlay
342926	Variable
3429G10	Variable
3429AS	Variable
3429WN	Variable
34293	Variable
3429GB	Variable
3429BB	Variable
3429ORB	Variable
3429FB (shown)	Variable
3429W	Variable

Screws: (2) #6 O.H. x 5/8"; (3) #6 F.H. x 1/2"
Pack type information can be located in the Product Index that begins on page 213.

SELF-CLOSING, FACE MOUNT

Available Finishes

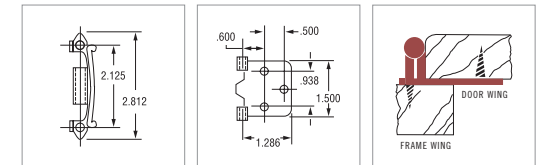
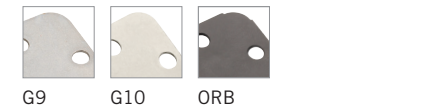


A full finish index is located on pages 172-173.

Product Number	Overlay
792926	Variable
7929G10 (shown)	Variable
79293	Variable
7929AE	Variable
7929BB	Variable
7929ORB	Variable

Screws: (2) #5 O.H. x 5/8"; (3) #5 F.H. x 1/2"
Pack type information can be located in the Product Index that begins on page 213.

Available Finishes



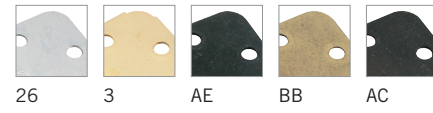
A full finish index is located on pages 172-173.

Product Number	Overlay
7329G9	Variable
7329G10	Variable
73290RB (shown)	Variable

Screws: (2) #5 O.H. x 5/8"; (3) #5 F.H. x 1/2"
Pack type information can be located in the Product Index that begins on page 213.

SELF-CLOSING, FACE MOUNT

Available Finishes

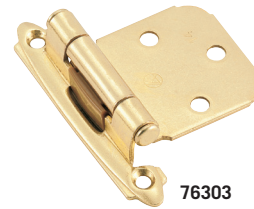


A full finish index is located on pages 172-173.

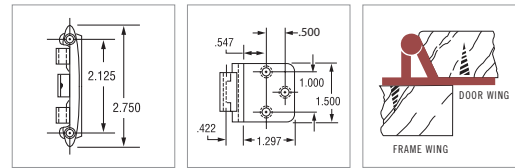
Product Number	Overlay
763026	Variable
76303 (shown)	Variable
7630AE	Variable
7630BB	Variable
7630AC	Variable

Screws: (5) #5 O.H. x 5/8"

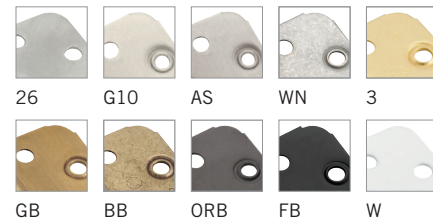
Pack type information can be located in the Product Index that begins on page 213.



76303



Available Finishes



A full finish index is located on pages 172-173.

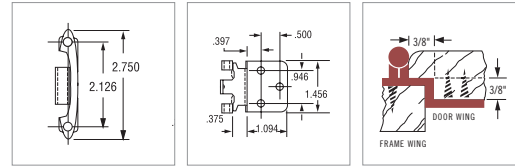
Product Number	Inset
342826	3/8"
3428G10	3/8"
3428AS	3/8"
3428WN	3/8"
34283	3/8"
3428GB	3/8"
3428BB	3/8"
3428ORB	3/8"
3428FB (shown)	3/8"
3428W	3/8"

Screws: (5) #6 O.H. x 5/8"

Pack type information can be located in the Product Index that begins on page 213.

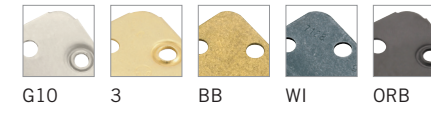


3428FB



SELF-CLOSING, FACE MOUNT

Available Finishes



A full finish index is located on pages 172-173.

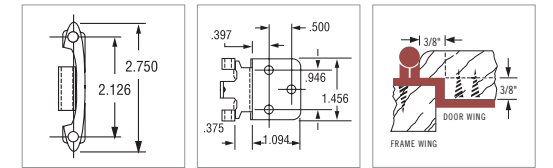
Product Number	Inset
7128G10	3/8"
71283	3/8"
7128BB	3/8"
7128WI	3/8"
71280RB (shown)	3/8"
7128BK	3/8"
7128W	3/8"

Screws: (5) #6 O.H. x 5/8"

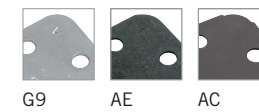
Pack type information can be located in the Product Index that begins on page 213.



71280RB



Available Finishes

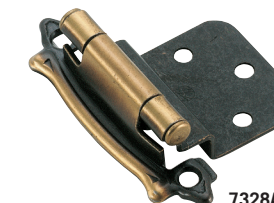


A full finish index is located on pages 172-173.

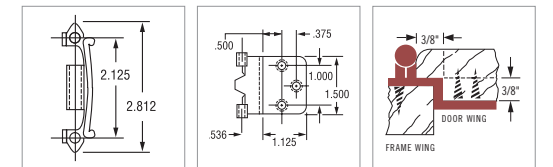
Product Number	Inset
7328G9	3/8"
7328AE (shown)	3/8"
7328AC	3/8"

Screws: (5) #5 O.H. x 5/8"

Pack type information can be located in the Product Index that begins on page 213.

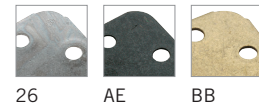


7328AE



SELF-CLOSING, FACE MOUNT

Available Finishes



26 AE BB

A full finish index is located on pages 172-173.

Product Number	Inset
----------------	-------

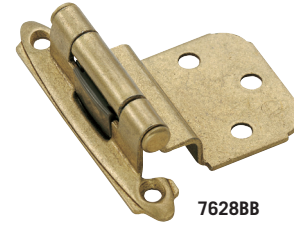
762826	3/8"
--------	------

7628AE	3/8"
--------	------

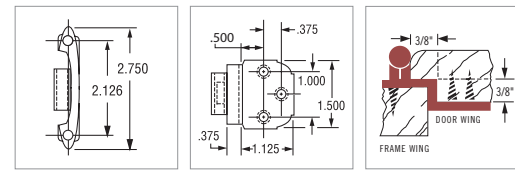
7628BB (shown)	3/8"
-----------------------	-------------

Screws: (5) #5 O.H. x 5/8"

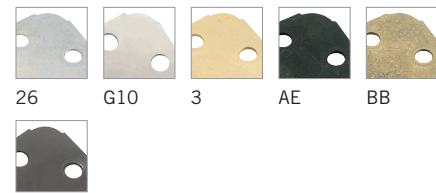
Pack type information can be located in the Product Index that begins on page 213.



7628BB



Available Finishes



26 G10 3 AE BB

ORB

A full finish index is located on pages 172-173.

Product Number	Inset
----------------	-------

792826	3/8"
--------	------

7928G10 (shown)	3/8"
------------------------	-------------

79283	3/8"
-------	------

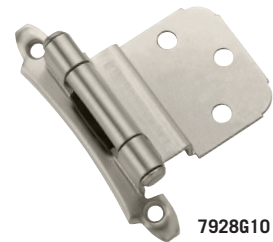
7928AE	3/8"
--------	------

7928BB	3/8"
--------	------

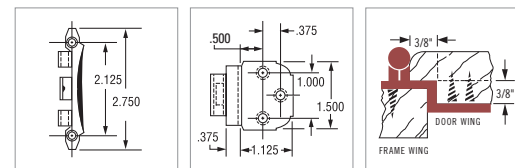
7928ORB	3/8"
---------	------

Screws: (5) #5 O.H. x 5/8"

Pack type information can be located in the Product Index that begins on page 213.



7928G10

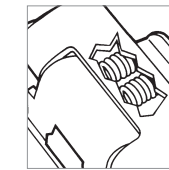


DOUBLE DEMOUNTABLE

Features

- Reduce labor by simple one-step routing
- Easy mounting – hinge slips into pre-routed slots
- Choice of overlays from 1/4" – 1/2", including 3/8" inset
- Double demountable hinges feature clamping plates, which clamp the hinge to both the door and the frame stile
- Heavy-duty steel construction
- Full 3-way adjustability
- Easily adjust and correct a warped door or a twisted cabinet problem
- Coordinating finishes

One-screw adjustment



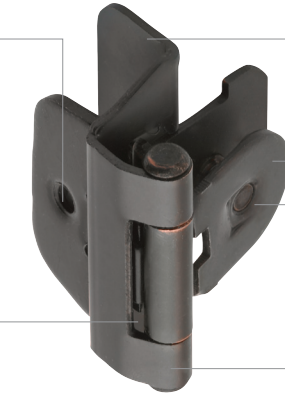
Overlays from 1/4" to 1/2"

Specially-angled clamps for reliable holding power

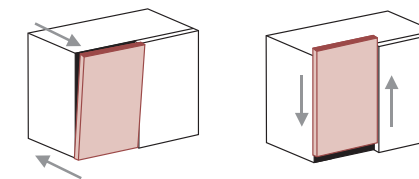
Easy-clamping mechanism

Dual-spring mechanism

Heavy-duty steel construction

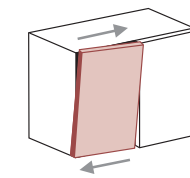


3-Way Adjustment



In-Out Adjustment

Vertical Adjustment



Horizontal Adjustment

DOUBLE DEMOUNTABLE

Available Finishes



G9 G10 3 BB ORB

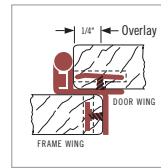
A full finish index is located on pages 172-173.

Product Number	Overlay
8701G9	1/4"
8701G10 (shown)	1/4"
87013	1/4"
8701BB	1/4"
8701ORB	1/4"

Pack type information can be located in the Product Index that begins on page 213.



8701G10



Available Finishes



14 G9 G10 AE BB



ORB W

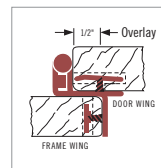
A full finish index is located on pages 172-173.

Product Number	Overlay
870414	1/2"
8704G9	1/2"
8704G10	1/2"
8704AE	1/2"
8704BB	1/2"
8704ORB	1/2"
8704W (shown)	1/2"

Pack type information can be located in the Product Index that begins on page 213.



8704W



DOUBLE DEMOUNTABLE

Available Finishes



G9 G10 AE BB ORB

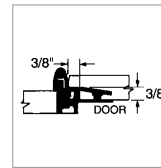
A full finish index is located on pages 172-173.

Product Number	Inset
8700G9 (shown)	3/8"
8700G10	3/8"
8700AE	3/8"
8700BB	3/8"
8700ORB	3/8"

Pack type information can be located in the Product Index that begins on page 213.



8700G9



SINGLE DEMOUNTABLE

Features

- Choice of overlays from 13/32" – 1/2", plus 3/8" inset
- Heavy-duty steel construction
- Wide range of mounting options
- Dual-spring mechanism for quiet, consistent self-closing power



SINGLE DEMOUNTABLE, PARTIAL WRAP

Available Finish



14

A full finish index is located on pages 172-173.

Product Number	Overlay
----------------	---------

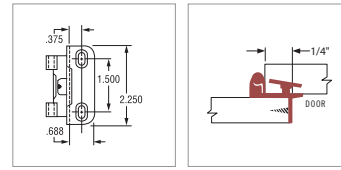
871514 (shown)	1/4"
----------------	------

Screws: (2) #6 F.H. X 5/8"

Pack type information can be located in the Product Index that begins on page 213.



871514



Available Finishes



14 G10 3 BB ORB

A full finish index is located on pages 172-173.

Product Number	Overlay
----------------	---------

871914	1/2"
--------	------

8719G10	1/2"
---------	------

87193	1/2"
-------	------

8719BB	1/2"
--------	------

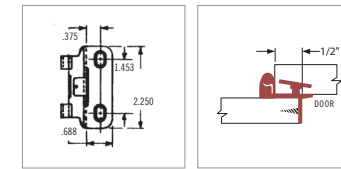
8719ORB (shown)	1/2"
-----------------	------

Screws: (2) #6 F.H. X 5/8"

Pack type information can be located in the Product Index that begins on page 213.



8719ORB



FACE MOUNT

Features

- Choice of frame wing styles and finishes to coordinate with decorative hardware
- Numerous style and application options, such as flush, offset or inset mounting, or overlay
- High strength steel



Choice of frame wing styles

Choice of door wing styles and hole patterns

NON SELF-CLOSING, FACE MOUNT

Available Finishes



G9 3 BB

A full finish index is located on pages 172-173.

Product Number	Overlay
----------------	---------

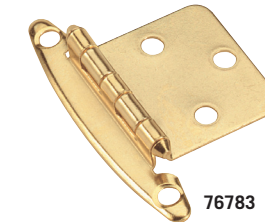
7678WNG9	Variable
----------	----------

76783 (shown)	Variable
---------------	----------

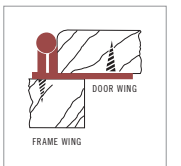
7678BB	Variable
--------	----------

Screws: (2) #5 O.H. x 5/8"; (3) #5 F.H. x 1/2"

Pack type information can be located in the Product Index that begins on page 213.



76783



Available Finishes



26¹ BB³

A full finish index is located on pages 172-173.

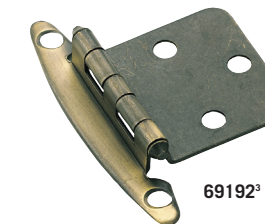
Product Number	Overlay
----------------	---------

69191 ¹	Variable
--------------------	----------

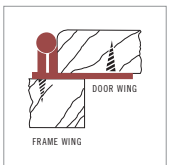
69192 ² (shown)	Variable
----------------------------	----------

Screws: (2) #5 O.H. x 5/8"; (3) #5 F.H. x 1/2"

Pack type information can be located in the Product Index that begins on page 213.

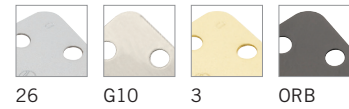


69192³



NON SELF-CLOSING, FACE MOUNT

Available Finishes



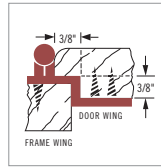
A full finish index is located on pages 172-173.

Product Number	Inset
341726	3/8"
3417G10	3/8"
34173	3/8"
34170RB (shown)	3/8"

Screws: (2) #5 O.H. x 5/8"; (3) #5 F.H. x 1/2"
Pack type information can be located in the Product Index that begins on page 213.



34170RB



Available Finishes



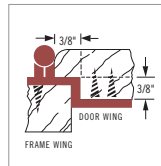
A full finish index is located on pages 172-173.

Product Number	Inset
69194 ¹	3/8"
69193² (shown)	3/8"
69195 ³	3/8"

Screws: (2) #5 O.H. x 5/8"; (3) #5 F.H. x 1/2"
Pack type information can be located in the Product Index that begins on page 213.



69193²



NON SELF-CLOSING, ADJUSTABLE

Available Finishes



A full finish index is located on pages 172-173.

Product Number	Inset
7687MAE (shown)	3/8"
7687MDAE	3/8"

Screws: (5) #6 O.H. x 5/8"
Pack type information can be located in the Product Index that begins on page 213.



7687AE

NON SELF-CLOSING

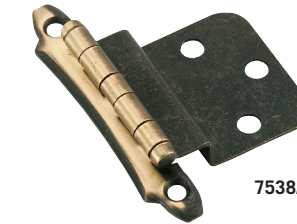
Available Finish



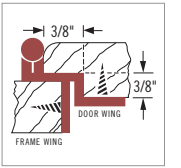
AE
A full finish index is located on pages 172-173.

Product Number	Inset
7538AE (shown)	3/8"

Screws: (2) #5 O.H. x 5/8"; (3) #5 F.H. x 1/2"
Pack type information can be located in the Product Index that begins on page 213.



7538AE



NON SELF-CLOSING, BUTT HINGE

Available Finish



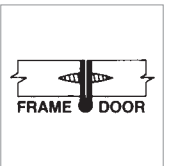
AE
A full finish index is located on pages 172-173.

Product Number	Wrap
2335AE (shown)	—

Screws: (4) #5 F.H. x 1/2"
1 1/2" Joint x 1 1/2" Width
Pack type information can be located in the Product Index that begins on page 213.



2335AE



Available Finish



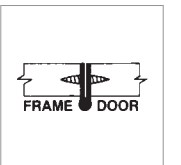
AE
A full finish index is located on pages 172-173.

Product Number	Wrap
2355AE (shown)	—

Screws: (6) #5 F.H. x 5/8"
2" Joint x 1 3/8" Width
Pack type information can be located in the Product Index that begins on page 213.



2355AE



NON SELF-CLOSING, "H" HINGE

Available Finishes



AC CB

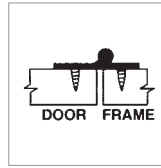
A full finish index is located on pages 172-173.

Product Number	
3404AC	Flush
3404CB (shown)	Flush

Screws: (6) #6 P.Y.H. x 5/8"
Pack type information can be located in the Product Index that begins on page 213.



3404CB



Available Finish



AC

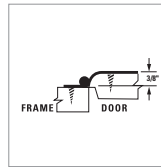
A full finish index is located on pages 172-173.

Product Number	Offset
3406AC (shown)	3/8"

Screws: (4) #6 P.Y.H. x 5/8"
Pack type information can be located in the Product Index that begins on page 213.



3406AC



Available Finish

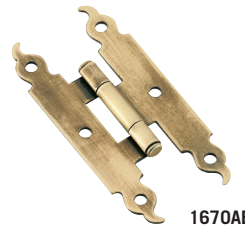


AE

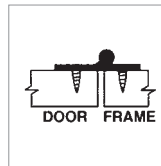
A full finish index is located on pages 172-173.

Product Number	
1670AE (shown)	Flush

Screws: (6) #6 P.Y.H. x 5/8"
Pack type information can be located in the Product Index that begins on page 213.



1670AE



Available Finish

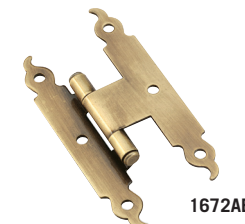


AE

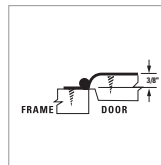
A full finish index is located on pages 172-173.

Product Number	Offset
1672AE (shown)	3/8"

Screws: (6) #6 P.Y.H. x 5/8"
Pack type information can be located in the Product Index that begins on page 213.



1672AE



FULL WRAP & PARTIAL WRAP

Features

- Minaret and ball finial tips provide elegant accents
- Exclusive pin treatment assures silent reliable performance
- Patented angled set hold simplifies installation; easy horizontal/vertical adjustment
- Door gap as small as 1/16"
- Designed with interlevered wings to minimize door gap and eliminate the need to mortise the door frame

Vertical adjustment
± 1/16"

Patented angled
set-screw hole

Vertical adjustment
± 1/16"



Horizontal adjustment
+ 1/16"

Horizontal adjustment
± 1/16"

Decorative Pin

FULL INSET, FULL WRAP, BALL TIP

Available Finishes



G9 G10 AE WI ORB



DAE FB

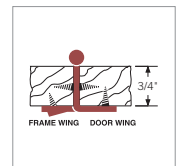
A full finish index is located on pages 172-173.

Product Number	Door Thickness
3175TBG9	3/4"
3175TBG10	3/4"
3175TBPB	3/4"
3175TBAE	3/4"
3175TBWI	3/4"
3175TBORB (shown)	3/4"
3175TBD AE	3/4"
3175TBFB	3/4"

Screws: (3) #6 F.H. x 5/8"; (4) #6 F.H. x 1/2"
Pack type information can be located in the Product Index that begins on page 213.

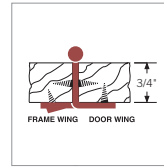


3175TBORB



FULL INSET, FULL WRAP, MINARET TIP

Available Finishes



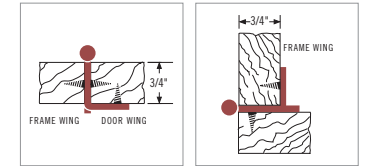
A full finish index is located on pages 172-173.

Product Number	Door Thickness
3175TM14	3/4"
3175TMG9	3/4"
3175TMG10 <i>(shown)</i>	3/4"
3175TMPB	3/4"
3175TMAE	3/4"
3175TMBB	3/4"
3175TMWI	3/4"
3175TMORB	3/4"
3175TMDAE	3/4"
3175TMFB	3/4"

Screws: (3) #6 F.H. x 5/8"; (4) #6 F.H. x 1/2"
Pack type information can be located in the Product Index that begins on page 213.

FULL INSET, PARTIAL WRAP, BALL TIP

Available Finishes



A full finish index is located on pages 172-173.

Product Number	Door Thickness
3180TB14	3/4"
3180TBG9	3/4"
3180TBG10	3/4"
3180TBAE	3/4"
3180TBBB	3/4"
3180TBWI <i>(shown)</i>	3/4"
3180TBORB	3/4"
3180TBDAE	3/4"
3180TBFB	3/4"

Screws: (2) #6 O.H. x 5/8"; (4) #6 F.H. x 1/2"
Pack type information can be located in the Product Index that begins on page 213.

FULL INSET, PARTIAL WRAP, MINARET TIP

Available Finish

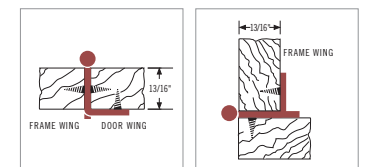


DAE

A full finish index is located on pages 172-173.

Product Number	Door Thickness
3180UBDAE <i>(shown)</i>	13/16"

Screws: (2) #6 O.H. x 5/8"; (4) #6 F.H. x 1/2"
Pack type information can be located in the Product Index that begins on page 213.



FULL INSET, PARTIAL WRAP, MINARET TIP

Available Finishes



A full finish index is located on pages 172-173.

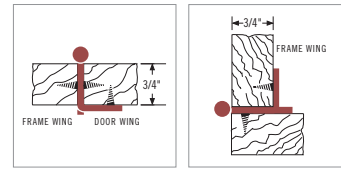
Product Number	Door Thickness
3180TM14	3/4"
3180TMG9 (shown)	3/4"
3180TMG10	3/4"
3180TMPB	3/4"
3180TMAE	3/4"
3180TMBB	3/4"
3180TMWI	3/4"
3180TMORB	3/4"
3180TMDAE	3/4"
3180TMFB	3/4"

Screws: (2) #6 O.H. x 5/8"; (4) #6 F.H. x 1/2"

Pack type information can be located in the Product Index that begins on page 213.



3180TMG9



FULL INSET, PARTIAL WRAP

Available Finish



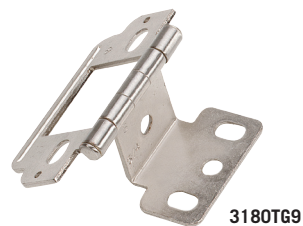
G9

A full finish index is located on pages 172-173.

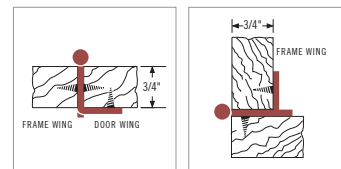
Product Number	Door Thickness
3180TG9 (shown)	3/4"

Screws: (2) #6 O.H. x 5/8"; (4) #6 F.H. x 1/2"

Pack type information can be located in the Product Index that begins on page 213.



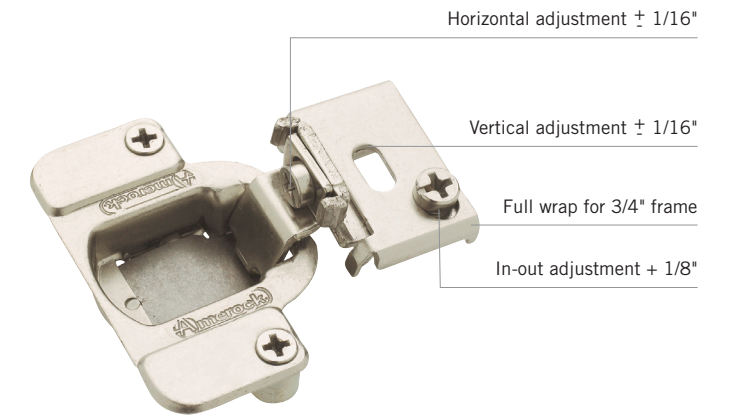
3180TG9



MATRIX™ FACE FRAME CONCEALED

Features

- 2-way or 3-way independent adjustability
- Compact design with low protrusion into Cabinet opening
- Stay open feature
- Choose from a full range of overlay options and hole patterns
- Designed and tested to exceed KCMA and BHMA standards



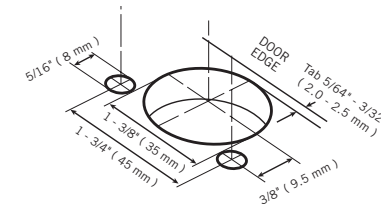
Horizontal adjustment ± 1/16"

Vertical adjustment ± 1/16"

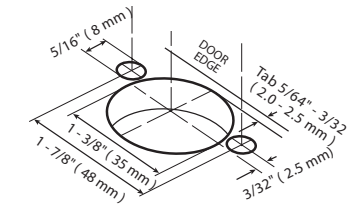
Full wrap for 3/4" frame

In-out adjustment + 1/8"

Hole Pattern – 45mm



Hole Pattern – 48mm



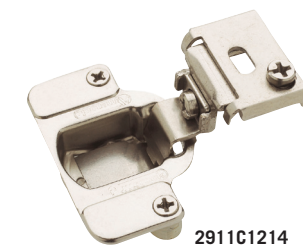
MATRIX™ CONCEALED

Available Finish



14

A full finish index is located on pages 172-173.



2911C1214

Product Number	Overlay	Hole Pattern	Cup Depth	Opening Angle	Adjustment
2911C1214 (shown)	1 1/4"	48mm	13mm	105°	3-way
2911C1314	1 1/4"	45mm	13mm	105°	3-way
2911J2214	1/2"	48mm	11mm	105°	3-way
2911J2314	1/2"	45mm	11mm	105°	3-way

Screws: D packs do not include screws

Pack type information can be located in the Product Index that begins on page 213.

MATRIX™ CONCEALED

Available Finish



14

A full finish index is located on pages 172-173.



2811C1314

Product Number	Overlay	Hole Pattern	Cup Depth	Opening Angle	Adjustment
2811C1314 (shown)	1 1/4"	45mm	13mm	105°	2-way
2811I1214	3/8"	48mm	13mm	105°	2-way
2811J2314	1/2"	45mm	11mm	105°	2-way
2811H1314	1/4"	45mm	13mm	105°	2-way
2811N1214	15/16"	48mm	13mm	105°	2-way

Screws: D packs include 8mm dowels (no screws); BP packs include all mounting screws (no dowels)
Pack type information can be located in the Product Index that begins on page 213.

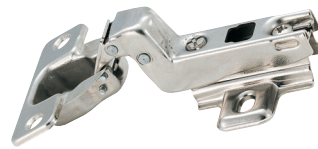
FRAMELESS CONCEALED

Available Finish

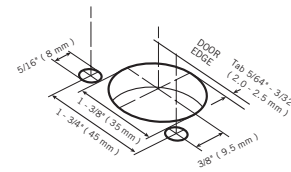


D14

A full finish index is located on pages 172-173.



4613-D14



Product Number	Overlay	Hole Pattern	Cup Depth	Opening Angle	Adjustment
4613D14 (shown)	Full	45mm	-	110°	3-way

Screws: BP packs include all mounting screws (no dowels)
Pack type information can be located in the Product Index that begins on page 213.

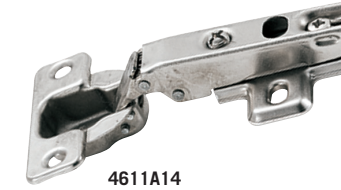
FRAMELESS CONCEALED

Available Finish

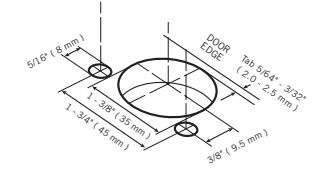


A14

A full finish index is located on pages 172-173.



4611A14



Product Number	Overlay	Hole Pattern	Cup Depth	Opening Angle	Adjustment
4611A14 (shown)	Full	45mm	-	110°	3-way

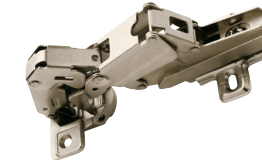
Screws: BP packs include all mounting screws (no dowels)
Pack type information can be located in the Product Index that begins on page 213.

Available Finish

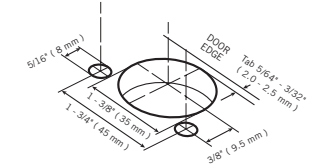


C14

A full finish index is located on pages 172-173.



7165AC14



Product Number	Overlay	Hole Pattern	Cup Depth	Opening Angle	Adjustment
7165AC14 (shown)	Full, clip on	45mm	-	165°	3-way

Screws: BP packs include all mounting screws (no dowels)
Pack type information can be located in the Product Index that begins on page 213.

EASY ON

Available Finish



CH

A full finish index is located on pages 172-173.



14951CH

Product Number	Overlay
14951CH (shown)	Variable

Screws: BP and CM packs include all mounting
Screws: D packs do not include screws
Pack type information can be located in the Product Index that begins on page 213.

MARATHON®

Features

- Guaranteed performance – smooth, quiet and trouble free
- Exceeds 250,000 cycles – outperforms conventional knife hinges and KCMA standards
- Reliable self-closing force – outlasts conventional knife hinges
- Cuts should be made with a #6 dado 9/32" W

Locating tabs allow quick positioning on frame

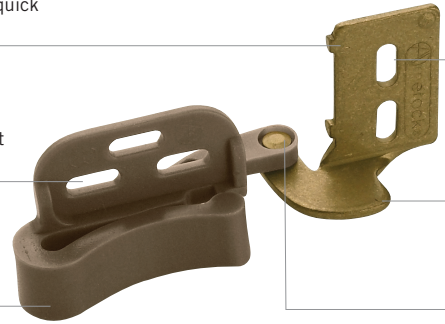
Vertical adjustment $\pm 1/16"$

Horizontal adjustment $\pm 1/16"$

High-strength steel frame wings for overlays 1/4" to 1/2"

Revolutionary DuraFlex™ action for long life

Full 180° opening



MARATHON®, PARTIAL WRAP

Available Finish



W

A full finish index is located on pages 172-173.

Product Number	Overlay
2606W (shown)	1/2"

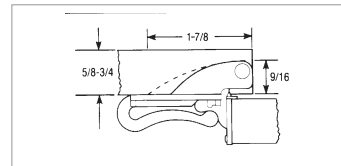
Screws: BP and CM packs include all mounting

Screws: D packs do not include screws

Pack type information can be located in the Product Index that begins on page 213.



2606W



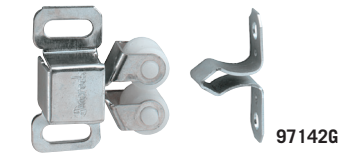
ROLLER CATCHES

Available Finishes



2G A2G

A full finish index is located on pages 172-173.



97142G

Product Number	Pull Force	Length	Width	Height	Strike
97142G (shown)	3-6 lbs.	1 3/16"	1 3/8"	9/16"	Steel; (2G); 1 5/16" L x 1/4" W x 1/2" H
9714A2G	3-6 lbs.	1 3/16"	1 3/8"	9/16"	Steel; (2G); 1 5/16" L x 1/4" W x 1/2" H

Screws: (4) #6 T.H. x 1/2"

Pack type information can be located in the Product Index that begins on page 213.

Available Finish



2G

A full finish index is located on pages 172-173.



34722G

Product Number	Pull Force	Length	Width	Height	Strike
34722G (shown)	3-6 lbs.	1 3/16"	1 3/8"	9/16"	Steel; (2G); 1 5/16" L x 1/4" W x 1/2" H

Screws: (4) #6 T.H. x 1/2"

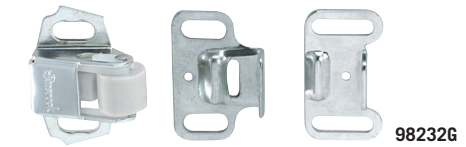
Pack type information can be located in the Product Index that begins on page 213.

Available Finishes



2G B2G

A full finish index is located on pages 172-173.



98232G

Product Number	Pull Force	Length	Width	Height	Strike
98232G (shown)	–	1 1/4"	1 3/8"	5/8"	Steel; (2G); 1" L x 1 3/8" W x 3/8" H
9823B2G	–	1 1/4"	1 3/8"	5/8"	Steel; (2G); 3/4" L x 1 3/8" W x 3/8" H

Screws: (4) #6 T.H. x 1/2" ; Nail (2) #18 F.H. x 1/2"

Pack type information can be located in the Product Index that begins on page 213.

ROLLER CATCHES

Available Finish



14

A full finish index is located on pages 172-173.



347414

Product Number	Pull Force	Length	Width	Height	Strike
347414 (shown)	5-6 lbs.	1"	15/16"	1/2"	Steel; 1" L x 11/16" W x 3/8" H

Screws: (3) #6 T.H. x 1/2"

Pack type information can be located in the Product Index that begins on page 213.

Available Finish



2G

A full finish index is located on pages 172-173.



97452G

Product Number	Pull Force	Length	Width	Height	Strike
97452G (shown)	5-6 lbs.	1 3/4"	1/8"	7/8"	Steel

Screws: (2) #5 O.H. x 5/8"; (3) #5 F.H. x 1/2"

Pack type information can be located in the Product Index that begins on page 213.

Available Finish



AW

A full finish index is located on pages 172-173.



9753AW

Product Number	Pull Force	Length	Width	Height	Strike
9753AW (shown)	5-10 lbs.	1 1/8"	2"	5/8"	Steel; (AE); 1 1/8" L x 3/4" W

Screws: (2) #6 T.H. x 1/2"; (1) #5 F.H. x 1/2"

Pack type information can be located in the Product Index that begins on page 213.

MAGNETIC CATCHES

Available Finishes



3W



PT



3PT

A full finish index is located on pages 172-173.



9765PT

Product Number	Pull Force	Length	Width	Height	Strike
97653W	5-11 lbs.	1 15/16"	3/4"	11/16"	Steel; 3 strikes; (AE); 1 1/8" L x 7/8" W x 3/4" H
9765PT (shown)	5-11 lbs.	1 15/16"	3/4"	11/16"	Steel; 1 strike; (AE); 1 1/8" L x 7/8" W x 3/4" H
97653PT	5-11 lbs.	1 15/16"	3/4"	11/16"	Steel; 3 strikes; (AE); 1 1/8" L x 7/8" W x 3/4" H

Screws: (2) #6 T.H. x 1/2"; (1) #5 F.H. x 1/2"

Pack type information can be located in the Product Index that begins on page 213.

Available Finishes



W



PT

A full finish index is located on pages 172-173.



9765FW

Product Number	Pull Force	Length	Width	Height	Strike
9765FW (shown)	5-11 lbs.	1 15/16"	3/4"	11/16"	Steel; (AE); 1 1/8" L x 7/8" W x 3/4" H
9765FPT	5-11 lbs.	1 15/16"	3/4"	11/16"	Steel; (AE); 1 1/8" L x 7/8" W x 3/4" H

Screws: (4) #6 T.H. x 1/2"; Nail (1) #15 x 1/2"

Pack type information can be located in the Product Index that begins on page 213.

Available Finish

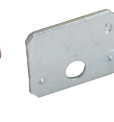


W



PT

A full finish index is located on pages 172-173.



3473PT

Product Number	Pull Force	Length	Width	Height	Strike
3473W	5-11 lbs.	2"	1 1/8"	1/2"	Steel; (AE); 1 1/8" L x 3/4" W
3473PT (shown)	5-11 lbs.	2"	1 1/8"	1/2"	Steel; (AE); 1 1/8" L x 3/4" W

Screws: (2) #6 T.H. x 1/2"; (1) #5 F.H. x 1/2"

Pack type information can be located in the Product Index that begins on page 213.

MAGNETIC CATCHES

Available Finish



PT

A full finish index is located on pages 172-173.



9773PT

Product Number	Pull Force	Length	Width	Height	Strike
9773PT <i>(shown)</i>	5-11 lbs.	2"	1 1/8"	1/2"	Steel; (AE); 1 1/8" L x 3/4" W

Screws: (2) #6 T.H. x 1/2"; (1) #5 F.H. x 1/2"

Pack type information can be located in the Product Index that begins on page 213.

Available Finish



AL

A full finish index is located on pages 172-173.



9783AL

Product Number	Pull Force	Length	Width	Height	Strike
9783AL <i>(shown)</i>	5-11 lbs.	2"	1"	5/8"	Steel; (AE); 1 1/8" L x 3/4" W

Screws: (2) #6 T.H. x 1/2"; (1) #5 F.H. x 1/2"

Pack type information can be located in the Product Index that begins on page 213.

Available Finishes



W



PT

A full finish index is located on pages 172-173.



9793PT

Product Number	Pull Force	Length	Width	Height	Strike
9793W	6-12 lbs.	2"	3/4"	1/2"	Steel; (AE); 1 1/8" L x 3/4" W
9793PT <i>(shown)</i>	6-12 lbs.	2"	3/4"	1/2"	Steel; (AE); 1 1/8" L x 3/4" W

Screws: (2) #6 T.H. x 1/2"; (1) #5 F.H. x 1/2"

Pack type information can be located in the Product Index that begins on page 213.

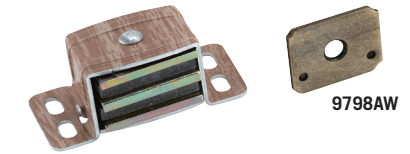
MAGNETIC CATCHES

Available Finish



AW

A full finish index is located on pages 172-173.



9798AW

Product Number	Pull Force	Length	Width	Height	Strike
9798AW <i>(shown)</i>	12-19 lbs.	1 1/8"	2"	13/16"	Steel; (AE); 1" L x 3/4" W

Screws: (2) #6 T.H. x 1/2"; (1) #5 F.H. x 1/2"

Pack type information can be located in the Product Index that begins on page 213.

Available Finish



AL

A full finish index is located on pages 172-173.



33772AL

Product Number	Pull Force	Length	Width	Height	Strike
33772AL <i>(shown)</i>	–	1 1/2"	13/16"	1/2"	Steel; 1 1/4" L x 7/8" W

Screws: (2) #6 T.H. x 1/2"; (1) #5 F.H. x 1/2"

Pack type information can be located in the Product Index that begins on page 213.

TOUCH CATCHES

Available Finishes



W



BR

A full finish index is located on pages 172-173.



32301BR

Product Number	Pull Force	Length	Width	Height	Strike
32301W	–	–	–	–	–
32301BR <i>(shown)</i>	–	–	–	–	–

Screws: (2) #6 T.H. x 5/8"; (1) #5 F.H. x 1/2"

Pack type information can be located in the Product Index that begins on page 213.

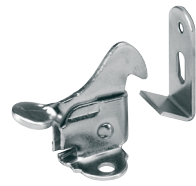
MISCELLANEOUS CATCHES

Available Finish



2G

A full finish index is located on pages 172-173.



36752G

Product Number	Pull Force	Length	Width	Height	Strike
36752G (shown)	–	1 5/16"	1"	1"	Steel; 1" L x 7/16" W x 1/4" H

Screws: (3) #5 T.H. x 1/2"; (1) #15 x 1/2"

Pack type information can be located in the Product Index that begins on page 213.

Product Number	Pull Force	Length	Width	Height	Strike
8924DB	–	–	–	–	Steel

Screws: (2) #5 O.H. x 5/8"; (3) #5 F.H. x 1/2"

Pack type information can be located in the Product Index that begins on page 213.

Available Finish



2G

A full finish index is located on pages 172-173.



34712G

Product Number	Pull Force	Length	Width	Height	Strike
34712G (shown)	3-6 lbs.	1 5/16"	1"	1/2"	Steel; 1 1/4" L x 3/8" W x 5/8" H

Screws: (4) #6 T.H. x 1/2"

Pack type information can be located in the Product Index that begins on page 213.

Available Finish



A2G

A full finish index is located on pages 172-173.



9700A2G

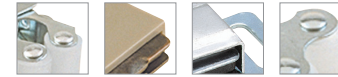
Product Number	Pull Force	Length	Width	Height	Strike
9700A2G (shown)	3-6 lbs.	1 5/16"	1"	1/2"	Steel; 1 1/4" L x 3/8" W x 5/8" H

Screws: (4) #6 T.H. x 1/2"

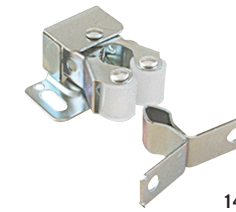
Pack type information can be located in the Product Index that begins on page 213.

MISCELLANEOUS CATCHES

Available Finishes



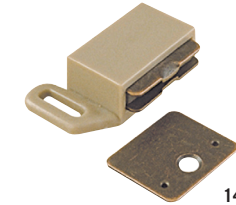
A full finish index is located on pages 172-173.



143



145



144



147

SHEET METAL SCREWS

Product Number	Description	Qty. Per Case
91557M3	#5 O.H. x 5/8" Sheet Metal Screws	2000 (10 bags of 200pcs)
91557BB	#5 O.H. x 5/8" Sheet Metal Screws	2000 (10 bags of 200pcs)
91657G10	#6 O.H. x 5/8" Sheet Metal Screws	2000 (10 bags of 200pcs)
91657M3	#6 O.H. x 5/8" Sheet Metal Screws	2000 (10 bags of 200pcs)
91657BB	#6 O.H. x 5/8" Sheet Metal Screws	2000 (10 bags of 200pcs)
91657ORB	#6 O.H. x 5/8" Sheet Metal Screws	2000 (10 bags of 200pcs)
92555G10	#5 F.H. x 1/2" Sheet Metal Screws	2000 (10 bags of 200pcs)
92555M26	#5 F.H. x 1/2" Sheet Metal Screws	2000 (10 bags of 200pcs)
92555M3	#5 F.H. x 1/2" Sheet Metal Screws	2000 (10 bags of 200pcs)
92555BB	#5 F.H. x 1/2" Sheet Metal Screws	2000 (10 bags of 200pcs)
92555ORB	#5 F.H. x 1/2" Sheet Metal Screws	2000 (10 bags of 200pcs)
92655G10	#6 F.H. x 1/2" Sheet Metal Screws	2000 (10 bags of 200pcs)
92655M3	#6 F.H. x 1/2" Sheet Metal Screws	2000 (10 bags of 200pcs)
92655BB	#6 F.H. x 1/2" Sheet Metal Screws	2000 (10 bags of 200pcs)
92655ORB	#6 F.H. x 1/2" Sheet Metal Screws	2000 (10 bags of 200pcs)
92657G10	#6 F.H. x 5/8" Sheet Metal Screws	2000 (10 bags of 200pcs)
92657M3	#6 F.H. x 5/8" Sheet Metal Screws	2000 (10 bags of 200pcs)
92657BB	#6 F.H. x 5/8" Sheet Metal Screws	2000 (10 bags of 200pcs)
92657ORB	#6 F.H. x 5/8" Sheet Metal Screws	2000 (10 bags of 200pcs)
94657BB	#6 T.H. x 5/8" Sheet Metal Screws	2000 (10 bags of 200pcs)

Pack type information can be located in the Product Index that begins on page 213.

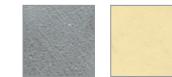
MACHINE SCREWS FOR KNOBS AND PULLS

Product Number	Description	Qty. Per Case
780312G	#8-32 T.H. x 1 3/4" Machine Screws	1000 (10 bags of 100pcs)
773002G	#8-32 T.H. x 2" Machine Screws	1000 (10 bags of 100pcs)
780272G	#8-32 T.H. x 1" Machine Screws	1000 (10 bags of 100pcs)
780292G	#8-32 Robertson x 1 1/4" Machine Screws	1000 (10 bags of 100pcs)
780302G	#8-32 T.H. x 1 1/2" Machine Screws	1000 (10 bags of 100pcs)
790632G	#8-32 T.H. x 1 5/8" Machine Screws	1000 (10 bags of 100pcs)

Pack type information can be located in the Product Index that begins on page 213.

SHELF SUPPORTS

Available Finishes



14 3

A full finish index is located on pages 172-173.

Product Number	Size	Box Qty
300114 <i>(shown)</i>	20mm L	4,000 per box
30013	–	4,000 per box

Note: For use with 5mm holes
Pack type information can be located in the Product Index that begins on page 213.

Available Finish



CL

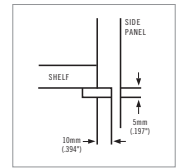
A full finish index is located on pages 172-173.

Product Number	Size
3002CL <i>(shown)</i>	–

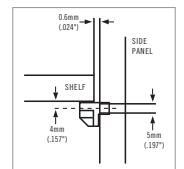
Note: For use with 5mm holes
Pack type information can be located in the Product Index that begins on page 213.



300114



3002CL



SERIES 17002

Features

- Self-closing euro style drawer slides
- 3/4 extension slides provide more stability for optimum performance
- Bottom or side mount capability
- Self-closing feature guides the drawer to the fully closed position from slightly outside the cabinet
- White epoxy coated



Product Number	Description	Material	Length	Width	Height	Extension	Slide Type
17002NB14W	14" S/C	Cold Rolled Steel	14"	1/2"	7/8"	3/4"	Euro
17002NB16WS	16" S/C	Cold Rolled Steel	16"	1/2"	7/8"	3/4"	Euro
17002NB18WS	18" S/C	Cold Rolled Steel	18"	1/2"	7/8"	3/4"	Euro
17002NB20WS	20" S/C	Cold Rolled Steel	20"	1/2"	7/8"	3/4"	Euro
17002NB22WS	22" S/C	Cold Rolled Steel	22"	1/2"	7/8"	3/4"	Euro
17002BPW	Fixed Rear Mtg Bkt	Plastic	-	-	-	-	Bracket

Pack type information can be located in the Product Index that begins on page 213.

SERIES 5850

Features

- Self-closing euro style drawer slides
- 3/4 extension slides provide more stability for optimum performance
- Bottom or side mount capability
- Self-closing feature guides the drawer to the fully closed position from slightly outside the cabinet



Product Number	Description	Material	Length	Width	Height	Extension	Slide Type
5850C14W	14" Cabinet Track	Cold Rolled Steel	14"	1/2"	7/8"	3/4"	Euro
5850C20W	20" Cabinet Track	Cold Rolled Steel	20"	1/2"	7/8"	3/4"	Euro
5850C22W	22" Cabinet Track	Cold Rolled Steel	22"	1/2"	7/8"	3/4"	Euro
5850D14WS	14" Drawer Rail	Cold Rolled Steel	14"	1/2"	7/8"	3/4"	Euro
5850D20WS	20" S/C Drawer Rail	Cold Rolled Steel	20"	1/2"	7/8"	3/4"	Euro
5850D22WS	22" S/C Drawer Rail	Cold Rolled Steel	22"	1/2"	7/8"	3/4"	Euro
5850ABRPW	Right Adjustable Rear Mtg Bkt	Plastic	-	-	-	-	Bracket
5850BRPW	Right Fixed Rear Mtg Bkt	Plastic	-	-	-	-	Bracket

Pack type information can be located in the Product Index that begins on page 213.

SERIES 700

Features

- Standard type ball bearing side mount drawer slides
- Ball bearings within the slides provide smooth, long-lasting operation
- Full extension slides provide easy access to all items in the drawer
- When closed, the hold-in detent keeps the drawer firmly in place
- The lever disconnect feature simplifies drawer removal



Product Number	Description	Material	Length	Width	Height	Extension	Slide Type
70016NB2G	Standard Type Side Mount	Cold Rolled Steel	16"	1/2"	1 3/4"	Full	Ball Bearing
70018NB2G	Standard Type Side Mount	Cold Rolled Steel	18"	1/2"	1 3/4"	Full	Ball Bearing
70020NB2G	Standard Type Side Mount	Cold Rolled Steel	20"	1/2"	1 3/4"	Full	Ball Bearing
70022NB2G	Standard Type Side Mount	Cold Rolled Steel	22"	1/2"	1 3/4"	Full	Ball Bearing

Pack type information can be located in the Product Index that begins on page 213.