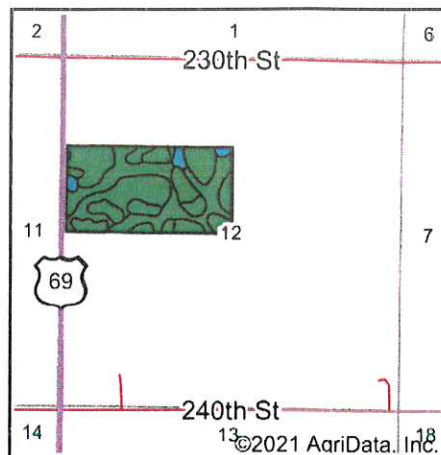
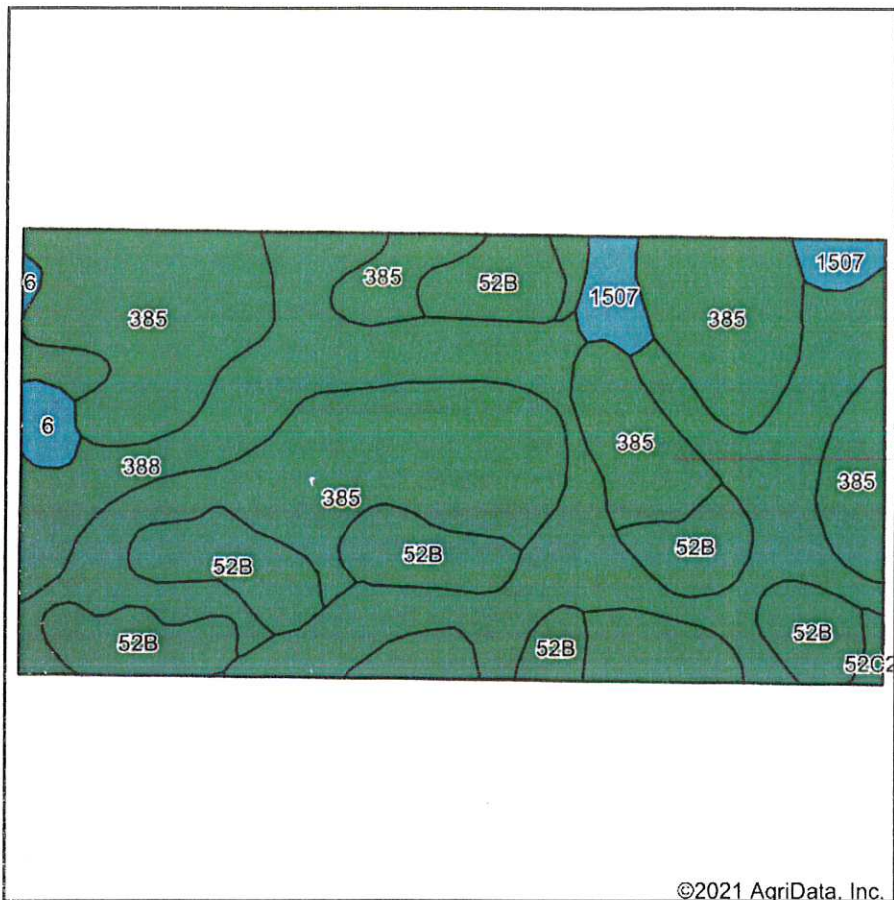


# Soils Map



State: **Iowa**  
 County: **Wright**  
 Location: **12-91N-24W**  
 Township: **Lincoln**  
 Acres: **76.52**  
 Date: **12/3/2021**



Soils data provided by USDA and NRCS.

| Area Symbol: IA197, Soil Area Version: 30 |   |       |                  |             |             |                   |               |                   |                  |             |           |                   |
|---|---|-------|------------------|-------------|-------------|-------------------|---------------|-------------------|------------------|-------------|-----------|-------------------|
| Code                                      | Soil Description  | Acres | Percent of field | CSR2 Legend | Water Table | Restrictive Layer | Septic Limits | Foundation Limits | Non-Irr Class *c | CSR2**      | CSR       | *n NCCPI Soybeans |
| 385                                       | Guckeen clay loam, 1 to 3 percent slopes                  | 35.42 | 46.3%            |             | 1.5ft.      | > 6.5ft.          | very limited  | very limited      | llw              | 76          |           | 63                |
| 388                                       | Kossuth silty clay loam, 0 to 2 percent slopes            | 24.24 | 31.7%            |             | 0ft.        | > 6.5ft.          | very limited  | very limited      | llw              | 86          | 77        | 89                |
| 52B                                       | Bode clay loam, 2 to 6 percent slopes                     | 13.42 | 17.5%            |             | 3.6ft.      | > 6.5ft.          | very limited  | somewhat limited  | lle              | 91          | 78        | 82                |
| 1507                                      | Brownton silty clay loam, 0 to 2 percent slopes           | 2.10  | 2.7%             |             | 0ft.        | > 6.5ft.          | very limited  | very limited      | llw              | 62          | 72        | 65                |
| 6   | Okoboji silty clay loam, 0 to 1 percent slopes            | 1.01  | 1.3%             |             | 1.3ft.      | > 6.5ft.          | very limited  | very limited      | lllw             | 59          | 57        | 74                |
| 52C2                                      | Bode clay loam, 6 to 10 percent slopes, moderately eroded | 0.33  | 0.4%             |             | 3.6ft.      | > 6.5ft.          | very limited  | somewhat limited  | llle             | 82          | 62        | 72                |
| <b>Weighted Average</b>                   |   |       |                  |             |             |                   |               |                   | <b>2.02</b>      | <b>81.2</b> | <b>*-</b> | <b>*n 74.8</b>    |

\*\*IA has updated the CSR values for each county to CSR2.

\*- CSR weighted average cannot be calculated on the current soils data, use prior data version for csr values.

\*n: The aggregation method is "Weighted Average using all components"

\*c: Using Capabilities Class Dominant Condition Aggregation Method

Soils data provided by USDA and NRCS.