

DATE	REVISION DESCRIPTION - THIS SHEET ONLY	ADDENDUM NO.
12/08/2020	1	
	2	
	3	
	4	
	5	
	6	
	7	

DATE: 01/17/20

ELEVATOR PLANS AND SECTION  
RIDGEVIEW GLOBAL STUDIES ACADEMY  
NEW 2-STORY CLASSROOM

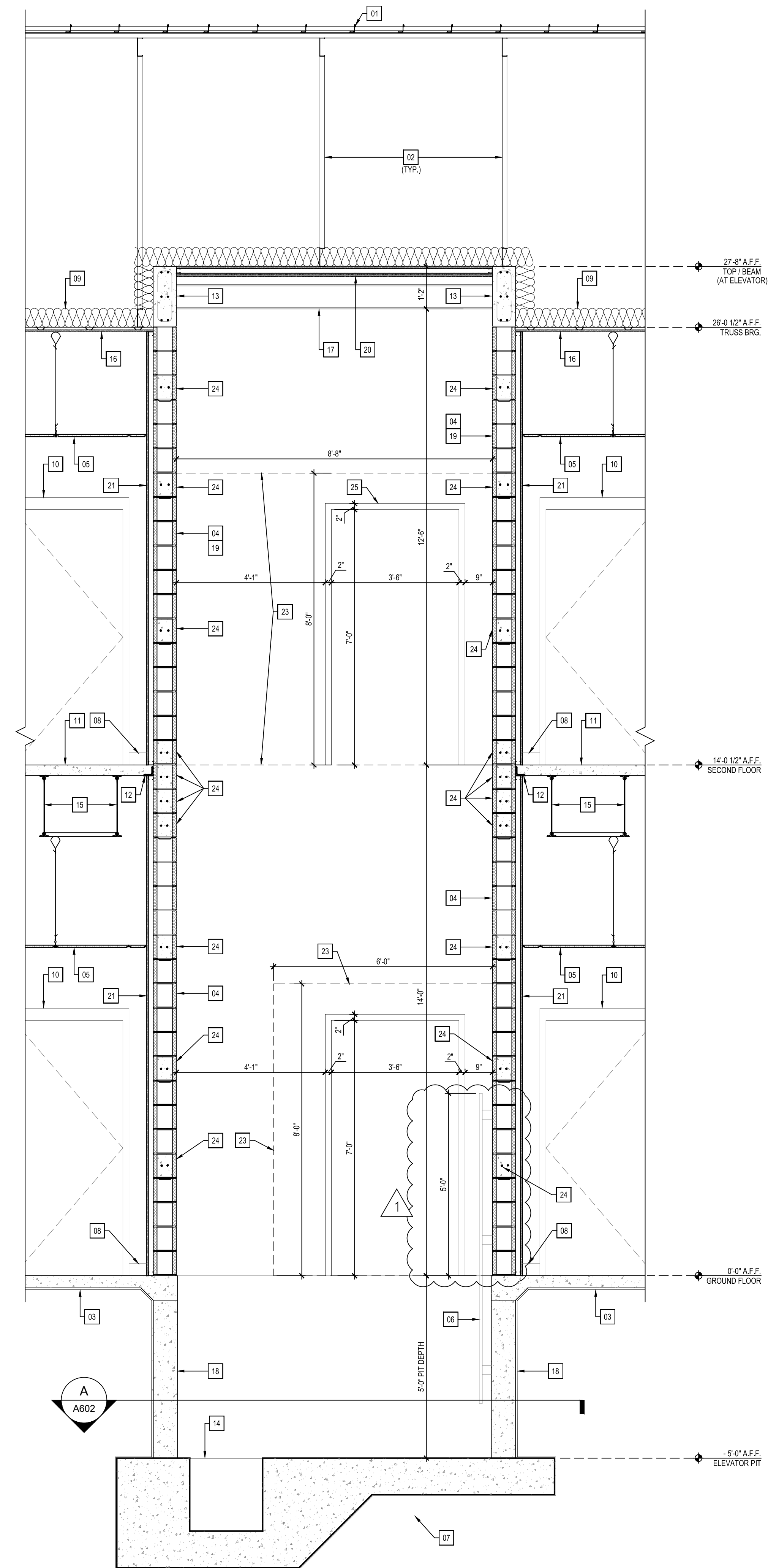
PROJ MGR: KAG CKD BY: PDW

JOB NUMBER: 19-26

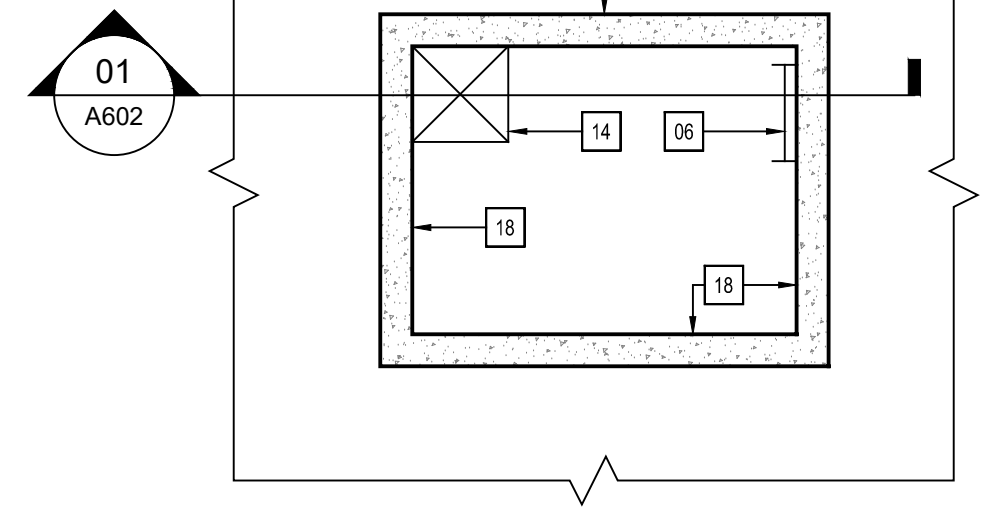
SHEET NUMBER: A602

PHASE: PERMIT SET

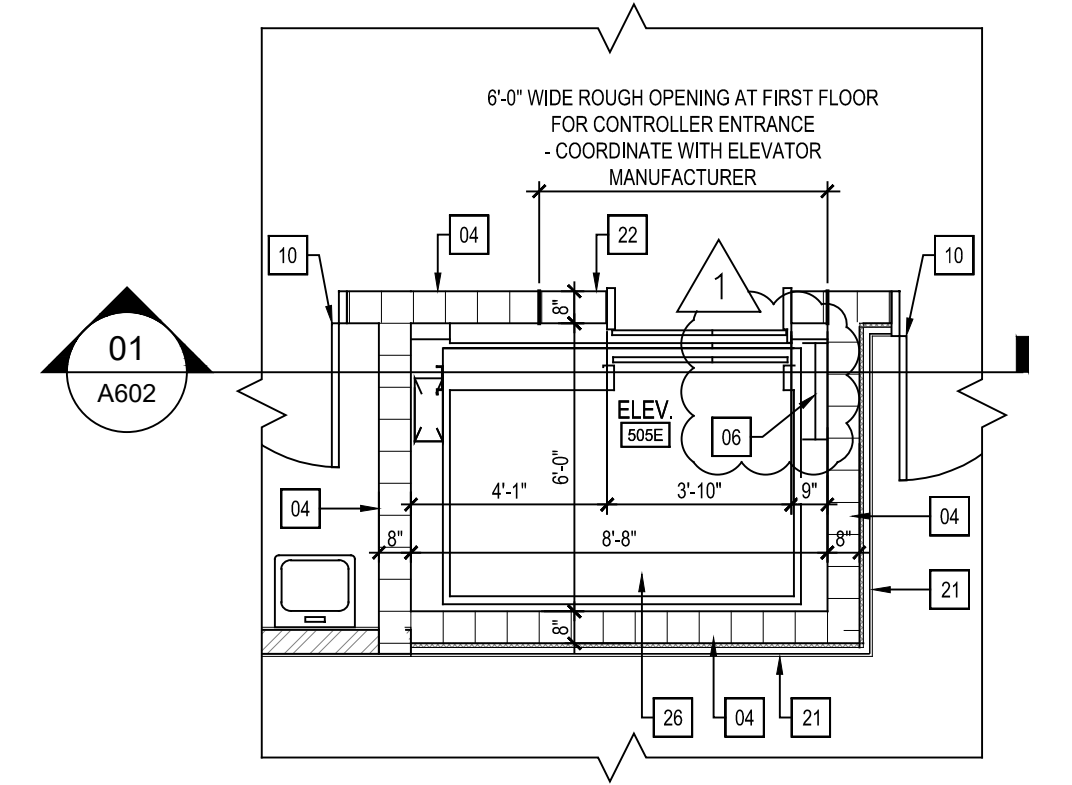
10650 DUNSON ROAD  
DAVENPORT, FL 33896



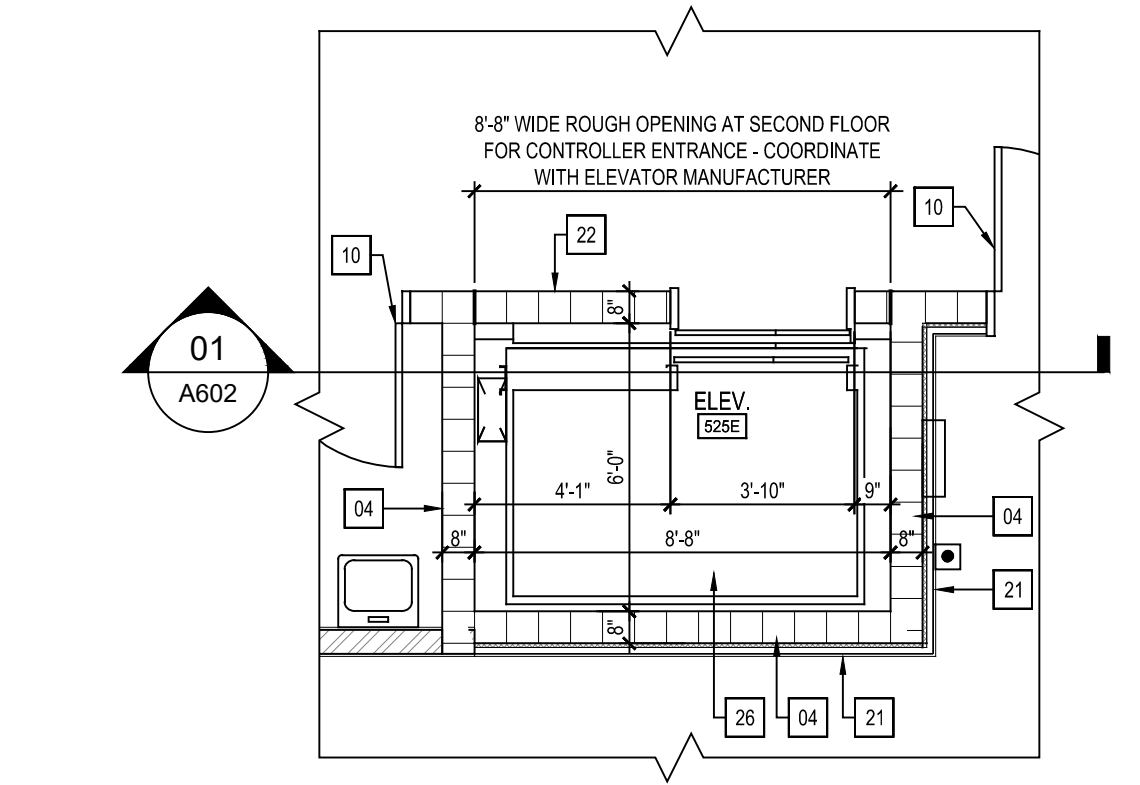
**01**  
A602  
ELEVATOR SECTION  
SCALE: 1/2" = 1'-0"



**A**  
A602  
ELEVATOR PIT PLAN  
SCALE: 1/4" = 1'-0"



**B**  
A602  
FIRST FLOOR ELEVATOR PLAN  
SCALE: 1/4" = 1'-0"



**C**  
A602  
SECOND FLOOR ELEVATOR PLAN  
SCALE: 1/4" = 1'-0"

**GENERAL NOTES**

A. GENERAL CONTRACTOR TO COORDINATE FINAL ELEVATOR ROUGH OPENINGS, DIMENSIONS AND DETAILS WITH SELECTED ELEVATOR MANUFACTURER.

**KEYNOTES**

01. STANDING SEAM METAL ROOF OVER METAL DECK WITH ICE & WATER SHIELD.
02. PRE-ENGINEERED METAL TRUSSES. SEE STRUCTURAL DRAWINGS.
03. 4" CONCRETE SLAB OVER 10 MIL. VAPOR BARRIER OVER COMPACTED TREATED FILL; TAPE ALL JOINTS. SEE STRUCTURAL DRAWINGS.
04. 2-HR FIRE RATED WALL ASSEMBLY AT ELEVATOR SHAFT (SEE LIFE SAFETY DRAWINGS AND WALL TYPES) 8"x8"x16" C.M.U. WITH REINFORCING.
05. ACUSTICAL TILE CEILING AND GRID SYSTEM.
06. ELEVATOR PIT LADDER (TO EXTEND 5'-0" A.F.F.) PROVIDED BY ELEVATOR MANUFACTURER.
07. FOUNDATION. SEE STRUCTURAL DRAWINGS.
08. WALL BASE (BEYOND).
09. R-30 BATT INSULATION.
10. DOOR AND FRAME. SEE DOOR SCHEDULE.
11. 3 1/2" CONCRETE SLAB/ METAL DECK COMPOSITE FLOOR SYSTEM. SEE STRUCTURAL DRAWINGS.
12. STEEL ANGLE. SEE STRUCTURAL DRAWINGS.
13. FORMED AND POURED CONCRETE BEAM. SEE STRUCTURAL DRAWINGS.
14. ELEVATOR SUMP PIT AND SUMP PUMP.
15. STEEL BAR JOIST. SEE STRUCTURAL DRAWINGS.
16. 5/8" GYPSUM BOARD OVER 1 1/2" x 20 GA. METAL HAT CHANNELS @ 16" O.C.
17. 8" HOIST BEAM. SEE STRUCTURAL DRAWINGS. VERIFY SIZE WITH ELEVATOR MANUFACTURER.
18. CONCRETE STEM WALL. SEE STRUCTURAL DRAWINGS.
19. SHAFT WALL - 2 HR RATED. SEE LIFE SAFETY DRAWINGS.
20. 2 HR FIRE RATED CEILING ASSEMBLY. SEE LIFE SAFETY DRAWINGS.
21. 1 5/8" x 20 GA. METAL STUDS @ 16" O.C. WITH 5/8" GYPSUM BOARD.
22. CMU WALL INFILL AFTER ELEVATOR INSTALLATION - COORDINATE WITH ELEVATOR MANUFACTURER. CMU WALL INFILL SHALL BE FLUSH WITH CORRIDOR WALLS.
23. ROUGH OPENING FOR ELEVATOR CONTROLLER ENTRANCE - COORDINATE WITH ELEVATOR MANUFACTURER.
24. CMU BOND BEAM - SEE STRUCTURAL DRAWINGS.
25. ELEVATOR DOOR BEYOND - COORDINATE WITH ELEVATOR MANUFACTURER.
26. ELEVATOR CAB BY ELEVATOR MANUFACTURER.