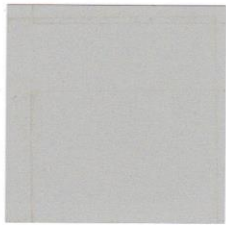


# DecoCrete Standard Color Selection Guide

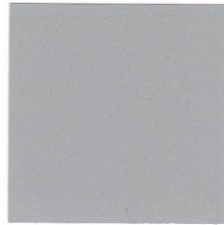
## Color Hardener (CH) & Antique Release Agent (RA)

\* Also Available in Black (140) and White (141)

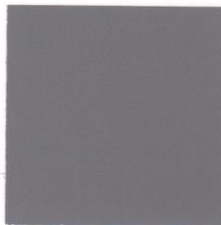
\*\*Colors Available for DecoCrete Overlay Systems and DecoTique



Millstone  
100



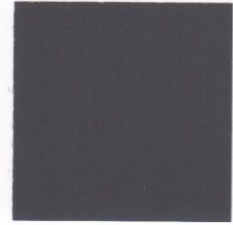
Dolphin\*\*  
101



Light Gray\*\*  
102



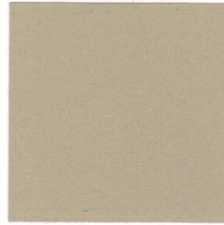
Medium Gray\*\*  
103



Dark Gray\*\*  
104



Limestone  
105



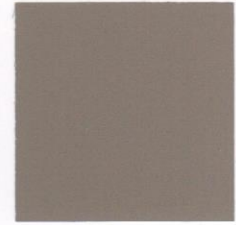
Sun Buff\*\*  
106



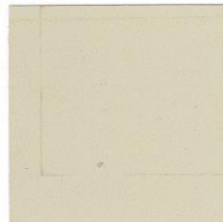
Oyster White\*\*  
107



Shale Stone  
108



Smokey Brown\*\*  
109



Travertine\*\*  
110



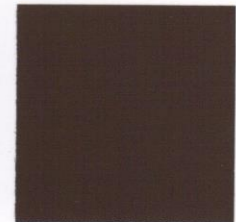
Sandy Brown\*\*  
111



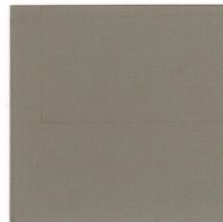
Brown Stone\*\*  
112



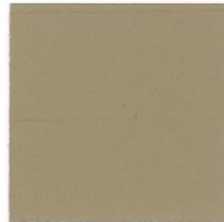
Bark Brown\*\*  
113



Chocolate\*\*  
114



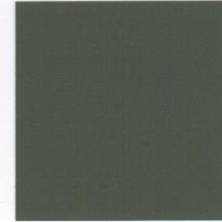
Rye Grass  
115



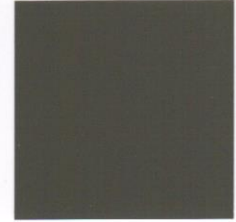
Sandstone\*\*  
116



Slate Green  
117



Forest Green\*\*  
118



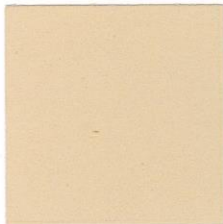
Soapstone  
119

The colors shown are an approximate representation of concrete with a flat trowel finish and sealed with finishing techniques or any other variables that cannot guarantee the final appearance to be an exact match and the use of sealers may produce color variations. DecoCrete strongly reco



*"Quality Decorative Concrete Supplies,  
Expert Technical Support"*

[www.deco-cretesupply.com](http://www.deco-cretesupply.com)



Coconut Cream  
120



Cappuccino\*\*  
121



Cream Beige  
122



Buckskin\*\*  
123



Antique Buff  
124



Golden Wheat  
125



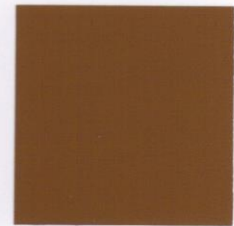
Mesa Beige  
126



Honey Beige  
127



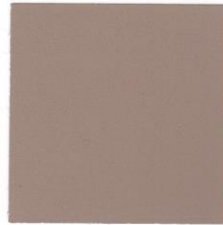
River Sand\*\*  
128



Terra Cotta  
129



Lava Stone  
130



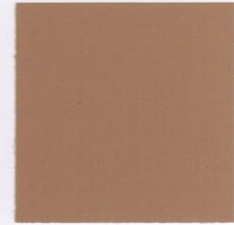
Blush Beige  
131



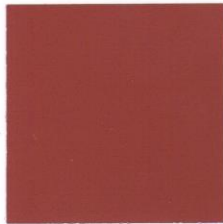
Rustic Brown\*\*  
132



Canyon Wall  
133



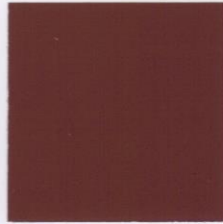
Champagne  
134



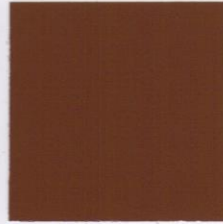
Quarry Red  
135



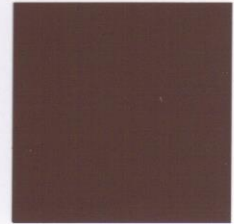
Tile Red  
136



Brick Red\*\*  
137



Saddle Brown\*\*  
138



Redwood\*\*  
139

DecoCrete's Diamond Shine solvent based sealer. DecoCrete is not responsible for application methods, h. Texturing or other finishing techniques such as troweling or brooming, slight variations in raw materials, recommends that a representative jobsite sample be made for each product used.