



New-Age time-management

FUN - DAYS

kaupapa

1God 1FAITH 1CHURCH Universe kaitiaki kaitiaki

1GOD hanga wā ki te ine i Timatanga & Whakamutua!

C> Whakanui-ra F> ra-Fun M> ra-Memorial S> Whakama-ra

Day marama	Day
Star -Tau Hou 1.1.1 Day	1.3.7 Day Shire
Sun BlossomDay 2.1.7	Victims 'o Day Crime 2.4.7
Mercury 3.1.7 Day Whakarea	Victims 'o Day War 3.4.7
Venus Day tamariki 4.1.7	Day Pollution 4.2.7
Earth Day Workers 5.1.7	Day metua vahine 5.3.7
Moon 6.1.7 Day Mātauranga	Day Defoliant 6.2.7
Mars Grandparents Day 7.1.7 Day Te faaamuraa 7.3.7	
Jupiter 8.1.7 Day Universe	Holocaust Day 8.2.7
Saturn Day nohonga 9.1.7	9.3.7 Day Cron
Uranus Day matua 10.1.7	Pera Day 10.2.7
Neptune Survival Day 11.1.7	Pet Day 11.3.7
pluto Day pai-hauora 12.1.7 Faatīraa Day 12.2.7	
solar Rakau riki Day 13.1.7	Tree Day 13.3.7
kapenga Kapenga Day 14.1.7	Quattro Day 14.0.2

Fun-Day kaupapa mo te hapori te whakatutuki Me ki whakanui kia whakama & mahara. Ka taea te whakamahi Fun-ra e kore hipokina e kaupapa kaitiaki Guardian Fun-Day mō kaupapa rohe. **Tuhipoka!** e kore e tautokona Hararei Public i runga i Wiki-ra '1> 6! Te kore New-Tau ra, kapenga & Quattro-kapenga.

He tinana tangata hauora & Soul Me ki kia hari, kata, waiata, kanikani, inoi, tiaki, hea, whakahoahoa & oaoa i pera whai wāhi i roto i ngā kaupapa Day Fun.

whai wāhi i **Celebrations, Memorial & whakama** tau katoa a Day ko te wahi nui & faufaa o te ora hapori. Feohi'a ki ētahi atu iwi he nui & hiahiatia mō te pūmautanga aronganui whaiaro. Reira nui hoki te wahi nui i roto i te hapori pai mahi. kua he tupono pai o Survival He hapori pai mahi.



Memorial Ra te tauturu i patunga o kino. whakatenatena enei o ra te hapori ki te ngana ki te ārai i hē heke mai. te tauturu ra o whakamaharatanga ki te tukanga tangi. tautoko CG ra Memorial.

whakama E āwangawanga ra o ki **patua kino** e te tangata i runga i te ao whenua Arama & / ranei. Ko te ra whakama te karanga ara ake mo te tangata. Mawehe & pā te whakama.



FUN - DAY

Celebrations Memorial whakama



1GOD whakaturia te mahi tauira 5 ra. I ra 6 arotake koutou paetae, whakaoti i tetahi kia oti te mahi & mahere muri mahi wiki. I ra 7 faaea ma pārekareka ki te ora i te **Fun-Day**.

1GOD i te okiokinga. Te ferururiraa & inoi rapu au maite i roto & oaoa mo tona wairua. hanga waiata nga anahera, waiata, kanikani & i rongu kata nga wahi katoa. **1GOD** i roto i te waenganui o tenei ha fiefia, katoa pārekareka katoa o reira. **1GOD** huaina tenei 7th ra **Fun-Day**.

whai matou **1GOD** ! Mahi 6 ra & hanga ra 7 he Fun-Day. Te whakawhanaunga, kia koa, e kai, e inu (Waipiro-kore) , Waiata, kanikani, kata engari ano inoi & whakaaro rapu au maite i roto & oaoa. Tirohia te Gathering. Celebrations Tautoko, whakamaharatanga & whakama ra.

Kei te tatari **1GOD** ki konei i **KOE!** **ÿ ÿ** **ÿ ÿ ÿ ÿ**

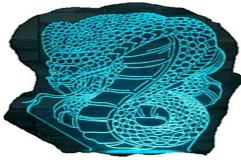
FUN - DAY - te pure **yy**

aroha **1GOD** , Kaihanga o te tino ataahua Universe tou haehaa tino pono kaitiaki-kaitiaki (1st ingoa) Ngā mihi 'e koe mo tenei wiki tamataraa tamata ahau ki te ora i te Daily-pure

I teie mahana whakanui ahau & koropiko ki te utuafare & hoa ui ahau mo arata'iraa mo te Wiki haere mai hoki te kororia o **1GOD** & te pai o Arama



I te kaupapa e whakamahia ana ra 'te inoi e hāngai ana te + te inoi Fun-Day!

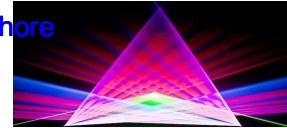


a 1.1.1.New-Tau ra (Tohu: Snake)

C-GKalender whakanuitanga

Ko te kaha tahi o te iwi whānui, Shire & Universe kaitiaki kaitiaki whakanui New-Tau Day. Whai kai & inu (Waipiro-kore) ; whakarongo, waiata & kanikani ki te waiata, te oaoa i te kata, i te ngakau hari & te whakaaro pai.

Tuhipoka! E kore pahū. E whakakapi ana ratou ki te taiaho-rama. Kahore he po-pou rāhui i waenganui i **kapenga** (ra whakamutunga o te tau o mua) & **Tau New.**



ra o New-tau i te Haaputuputuraa: He tuwhera i te 1 haora te Haaputuputuraa i muri Sunrise haere ki reira. Whai kai & inu (Waipiro-kore) ; whakarongo, waiata, kanikani ki te waiata, te oaoa i te kata, i te ngakau hari & te whakaaro pai. **kaitiaki kaitiaki** manako te tau e haere mai ana ki te inu-kore waipiro, he tauahiraa, he kihi & te inoi. **Tau Hou hari!**

Tuhipoka! Te karauna riki & E nekehia atu rakau.



S ocialize Tautoko tō Hapori elebrate C

tīmata Day New-Tau 'ki te pure New-Tau Day.

Tau New Day - pure yy

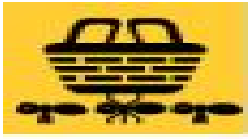
aroha **1GOD** , Kaihanga o te tino ataahua Universe tou haehaa tino pono kaitiaki-kaitiaki (1st ingoa) Ui mo te arata'iraa i runga i te tau e haere mai Na e kia noho ahau haehaa & mahi ora ake toku hapori ki toku pūmanawa tonu



Horahia e te kupu o te ture-Foaki Manifest hoki te kororia o **1GOD** & te pai o Arama

whakamahia ana tēnei inoi kei i runga i te 1st ra o te tau!





1.3.7. Shire ra (Tohu: he t)

C-GKalender whakanuitanga

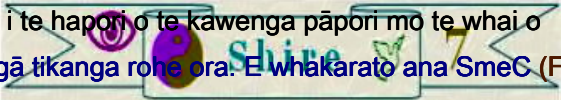
Ko te kaha tahi o te iwi whānui, Shire, Universe kaitiaki kaitiaki whakanui Day Shire. E tuwhera tonu o ngā mahi Parks. E whakaatu ana Local pule Tuhinga mahi momo taiopenga & whakangahau. Underlining iho rohe ahurei, reo + te parade & haki kohi. reo Main & mita o te hunga i roto i te whakamahi kia hoki kia mau kakahu tuku iho & koa kai rohe.

Shire ra i te Haaputuputuraa: Ko te uira tonu Haaputuputuraa ki kakahu mure traditio- he tuwhera i te 1 haora i muri Sunrise haere ki reira. Whai kai rohe & inu (Waipiro-kore) ; whakarongo, waiata & kanikani ki te waiata tuku iho, te oaoa i te kata, i te ngakau hari & te whakaaro pai.

Ka hari Shire-Day!

S ocialize Tautoko tō Hapori elebrate C

He **Shire** Ko noho tahi ana mai te iwi ki te hanga i te hapori o te kawenga pāpōri mo te whai o te pai noa mo te katoa. He ' **Shire** ' pupuri ana ngā tikanga rohe ora. E whakarato ana SmeC (Free-mātauranga) & Tiakina e te Habitat rohe. ake te reira i a te whenua katoa, whakarato reira Cluster-kāinga (S rīhi ') , whakau ana **cron**



(Community Run & kore-pai hoki-fatuhia pakihi) . He ' **Shire** '

E 1, neke atu rānei ' **Shire-Oasis** ', hanga ake o **SmeC**, '**CRBC (CROn- Retail & Bazaar Matatini)** ', Tapu (Habitat) , Ahuwhenua, Ngā-Cluster-Housing & Work-fare pureraa.

tīmata Day Shire 'ki te pure Day Shire.

S utu pure ra ngi: yy

aroha **1GOD** , Kaihanga o te tino ataahua Universe tou haehaa tino pono kaitiaki-kaitiaki (1st ingoa) Ui e kia manaakitia ai tenei hapori haehaa te hapori e ora i roto i te au i tōna ake wāhi noho te hapori akiakitia ana te tipu e mau utuafare te hapori e ko toku whare hoki te kororia o **1GOD** & te pai o Arama



whakamahia ana tēnei inoi i runga i ra Shire! Ranei rite hiahiatia.



2.1.7. tupu ra (Tohu: **tupu**)

C-GKalender whakanuitanga

Ko te kaha tahi o te iwi whānui, Shire, Universe kaitiaki kaitiaki whakanui Day puawai. Parks & nurseries whakaaturanga whakaatu puawai. Kia pai 1 **ATUA** 'hanga s, puawai. Faahiaha ratou kanohi, tae, & kanorau, hongir ratou kakara rori manganga. Maururu 1 **ATUA** hoki puawai. Ia & ia whakaatu ratou aroha mo tahi i te tahi na roto i te faaiteraa i te puawai, he kai, kanikani & kata tahi.

Puawai ra i te Haaputuputuraa: Ko te uira tonu Haaputuputuraa ki te puawai he tuwhera i te 1 haora i muri Sunrise haere ki reira. Whai kai & inu (Waipiro-kore) ; whakarongo, waiata & kanikani ki te waiata, te oaoa i te kata, i te ngakau hari & te whakaaro pai. **Ka hari puawai-Day!**

Tuhipoka! Te tiaki i ngā tipu e kia tatou oaoa i ratou i roto i te heke mai.

S ocialize Tautoko tō Hapori elebrate C

tīmata Day puawai 'ki te pure Day puawai.

lossom B Day - pure yy

aroha 1**GOD** , Kaihanga o te tino ataahua Universe tou haehaa tino pono kaitiaki-kaitiaki (1st ingoa) mihi 'e koe e ahuareka ki te kanohi & te ngakau ui ahau e rite ki nga puawai, kia tupu romance taunaha ahau ki te tiaki & poipoia otaota hoki te kororia o mo te ataahua o te puawai puawai 1**GOD** & te pai o Arama



whakamahia ana tēnei inoi i runga i ra puawai! Ranei rite hiahiatia.

HE & OIA he kēmu i hanga i roto i te rangi!



1**GOD** o
hoahoa:

HE & OIA whakapumautia te Utuafare!

HE Ko Matua, Kaiwhakarato / Kaitiaki.

OIA Ko Mother, Kaitiaki / tauhi'api.

He te kahore ōritetanga, kahore Tapu-faaipoiporaa, kahore rapu muri tamariki mo, iwi ki te hauā fakasekisuale (Tamaiti-molester, ira raruraru, taua ira) .



2.4.7. Victims o Crime ra (Tohu: ia-

Holy)

C-GKalendar Memorial

Victims o Crime (VC) Day whakamaharatanga ko te kaha tahi o te iwi whānui, Shire & Universe kaitiaki kaitiaki. E tū Ratonga Memorial. He ka whakaaturanga o 'Crime-ārai', 'Hapori-tiaki', 'ture-uruhi' & tiāti. Tautoko & uru 'Crime-ārai'

(Neighbourhood-tiaki) . tautoora tautoko hapori i roto i te āwhina & fakafiemālie, 'Victims o Crime'.



Hono! Tautoko mā te: e matakitaki ana, tuhi, pūrongo, mahi (Te hanga hopu haukāinga,) . Ko te hopoi'a o nga tangata ki te pupuri i haumaruru te hapori reira.

Victims o ra Crime i te Haaputuputuraa: Ko te Haaputuputuraa he mau mahanahana ho'i 'Victims o Crime'. Ko reira tuwhera i te 1 haora i muri Sunrise haere ki reira. Whai kai & inu (Waipiro-kore) ; whakarongo, waiata & kanikani ki te waiata, te oaoa i te kata, i te ngakau hari & te whakaaro pai.

Tuhipoka! Te kaitiaki-Guardian tautoko tango & kawenga o tiāti i he ngohengohe i runga i 'Malakilao'!

te whakawhanaunga Tautoko tō Hapori Whakaata & Tautoko

Victims o Day Crime tīmata 'ki te Victims o Day Crime pure.

Victims o Crime Day - pure yy

aroha **1GOD** , Kaihanga o te tino ataahua Universe tou haehaa tino pono kaitiaki-kaitiaki (1st ingoa) Ui ki noho te mamae & mamae o Victims o Victims Crime Āwhina o te Crime tiki Ture & utu fafau ahau ki te āwhina hāmene kino tonu ani i whiua e te kino kei roto i Life & Mo'ui Hili lá hoki te kororia o **1GOD** & te pai o Arama



whakamahia ana tēnei inoi i runga i Victims o ra Crime. Ranei rite hiahiatia!



Victims o Crime tika tautoko & Justice. .



3.1.7. Multiplication ra (Tohu: egg)

C-GKalendar whakanuitanga

Ko te kaha tahi o te iwi whānui, Shire & Universe kaitiaki kaitiaki whakanui Day whakarea. Parks & nurseries whakaaturanga whakaatu puawai. I roto i te mau utuafare ata hoatu tetahi ki tetahi hua o te ahua tetahi. No te tamariki kia huna ratou kia ratou e taea te titiro hoki a ratou. He pai hoki Taonga tākaro rite heihei, mokomoko ika ranei. I roto i te mau utuafare ahiahi kia whai i te pikiniki & pārekareka i te papa rēhia & māra (Huarere tukua) . Couples whakanui kahui. Timata i te utuafare!

ra whakareatanga i te Haaputuputuraa: Ko te uira tonu Haaputuputuraa ki te puawai he tuwhera i te 1 haora i muri Sunrise haere ki reira. whai kai (Hua atawhai tetahi) & inu (Waipiro-kore) ; whakarongo, waiata & kanikani ki te waiata, te oaoa i te kata, i te ngakau hari & te whakaaro pai. **Ka hari Whakarea-Day!**

Tuhipoka! Whakarea mō te specie Survival & Space-te whakanohonoho tangata.

S ocialize Tautoko tō Hapori elebrate C

tīmata Day Whakarea 'ki te pure Day whakarea.

whakareatanga Day - pure yy

aroha **1GOD** , Kaihanga o te tino ataahua Universe tou haehaa tino pono kaitiaki-kaitiaki (1st ingoa) mihi 'e koe mo te oaoaraa o te kahui Ui mo te hua & whakatupuranga hauora utu pupuri ki mate & tini



Na e taea te tangata haamau te Universe hoki te kororia o **1GOD** & te pai o Arama

whakamahia ana tēnei inoi kei i runga i Whakarea ra. Ranei rite hiahiatia!

Hoki specie He ora te tangata ki te mate & tini. whakapono CG e te kahui & whakanuia he wahi o te hononga on (Tapu te Marena Contract) o te HE & te OIA. Ekengia & whakanuia waho te Marena Tapu ko, 'Trashy'. Whakama & Kopae i te iwi trashy.

Hoki te iwi ki hinengaro & / ranei fakasekisuale-hauātanga (Tamaiti-molester, taua ira, raruraru ira) tūroro 'i reira he kahore Tapu-faaipoiporaa, kahore tiaki tamariki.



3.4.7. Victims o War ra (Tohu: **Bajonet**)

C-GKalendar Memorial

Victims o War (Sculpture) Day whakamaharatanga ko te kaha tahi o te iwi whānui, Shire & Universe kaitiaki kaitiaki. E tū Ratonga Memorial. E mahara Sculpture & whakamarietia. [puritia parade Anti-pakanga te.](#)

Rongoā mustbe KORE - tutu!

pupuri Hapori kore ki te whai wāhi i roto i whakaekenga & ki te hāmene Invaders & whawhai-kaimahi kino. Low-matua whakaatu o faaineineraa Military. [Te rangimarie & Justice. Tautoko rangimarie Movement & hāmene o War tutu! MS / R7](#)



Victims o ra War i te Haaputuputuraa: mau te Haaputuputuraa he ratonga whakamahara te haamana'oraa 'Victims o War'. Ko reira tuwhera i te 1 haora i muri Sunrise haere ki reira. [Whai kai & inu \(Waipiro-kore\) ; whakarongo, waiata & kanikani ki te waiata, te oaoa i te kata, i te ngakau hari & te whakaaro pai.](#)

te whakawhanaunga Tautoko tō Hapori Whakaata & Tautoko

Victims o Day War tīmata 'ki te Victims o Day War pure.

Victims o War Day - pure yy

aroha **1GOD** , Kaihanga o te tino ataahua Universe tou haehaa tino pono kaitiaki-kaitiaki (1st ingoa) fafau ki te āwhina & whiwhi Community awhina mo Victims o Ui War ki noho te pouri & mamae o Victims o War fafau ahau ki te āwhina hāmene War-kaimahi kino ani i e kua whakakorea whakaekenga hoki te kororia o **1GOD** & te pai o Arama



whakamahia ana tēnei inoi kei i runga i Victims o War ra! Ranei rite hiahiatia.

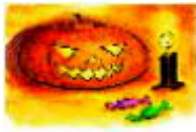
yyyyyyyyyyyyyyyyyyyyyy yyyyyyyyyyyyyyyyyyy

Whakaekenga Whakamutungā! E whakaritea papā Taitapa kahore tutu.

Killing civilians Mutu! E hāmenetia Kaahu. MS / R7 .

Killing Soldiers Ngata'anga! E riro hoia.

Fakamamahi'i Ngata'anga! E hāmenetia katoatia. MS / R7 .



4.1.7. tamariki ra (Tohu: rama)

C-GKalendar whakanuitanga

Ko te kaha tahi o te iwi whānui, Shire & Universe kaitiaki kaitiaki whakanui Day tamariki. whakaatu Parks whakaatu rama. Kei te honohono i te reira i te wa hoki ngā mātua & tamariki e tākaro, waiata & kata tahi.



He ra o te koa te utuafare. Maururu 1 **ATUA** hoki ngā tamariki. whakapaipai taone Shire te, me nga roherohe. Shire ngā kite e rere. I roto i te ahiahi he parade rama i reira kia whai wāhi te tamariki katoa.

Tuhipoka! Ko to tatou heke mai & tahuti ore tamariki.

Tuhipoka! E whakamahia No kánara tetahi atu mura ki rama marama ranei.



ra tamariki i te Haaputuputuraa: Ko te Haaputuputuraa whakatuwhera i te 1 haora i muri i te mura Sunrise ki te haere roherohe reira. Whai kai & inu (Waipiro-kore) ; whakarongo, waiata, kanikani ki te waiata, te oaoa i te kata, i te ngakau hari & te whakaaro pai. **Ka hari tamariki-Day!**

S ocialize Tautoko tō Hapori elebrate C

tīmata Day tamariki 'ki te pure Day tamariki.

tamariki Day - pure yy

aroha **1GOD** , Kaihanga o te tino ataahua Universe tou haehaa tino pono kaitiaki-kaitiaki (1st ingoa) Ngā mihi koutou, no te Kia tatou oaoa i nga wa katoa te manaaki o tamariki i tenei manaaki taunaha aha ki te hoatu & whiwhi ratou mātauranga e whakaatu ratou e aha pehea ki te koropiko hoki te kororia o **1GOD** & te pai o Arama



whakamahia ana tēnei inoi i runga i ra ngā tamariki ! Ranei rite hiahiatia.

yyyyyyyyyyyyyyyyyy yyyyyyyyyyyyyyyyyyy



4.2.7. **pollution** ra (Tohu: **Paru-bin**)

C-GKalender **whakama**

Day Pollution whakama ko te kaha tahi o te iwi whānui, Shire & Universe kaitiaki kaitiaki. E horoia Parks ake. He apo aia revolution ahumahi & tona taunga juggernaut



atu marketing i & e whakapoke i to tatou paraneta. Kei te tahuri te rāpihi throwaway Earth ki te Aki mate riddled. Kei te tahuri wai ki te uku,

haunga & hawata ana, parakaingaki. He whakahauanga ra ma-ake i & o te hapori. Shire whakarite te tetahi ma-ake e hiahia rāpihi horoi + nekehia atu.



I muri ma-ake te katoa kei te he pikiniki & huritao i runga i te āhua o ki te whakaiti i paru, pollution & whiua i whakapoke!

ra **Pollution** i te **Haaputuputuraa**: ringa i roto i te Haaputuputuraa tohutohu horoi & paru-peke. Open i 1 haora i muri i **Whitinga** haere ki reira. **Whai kai & inu** (Waipiro-kore) ; whakarongo, waiata & kanikani ki te waiata, te oaoa i te kata, i te ngakau hari & te whakaaro pai.

Haumaru i te **Future Tautoko** tō Hapori Clean

tahuri whakama ki Mahi Kei roto te parahanga & whiunga i whakapoke ko te pau oranga Arama.

tīmata Day Pollution 'ki te pure Day Pollution.

pollution Day - pure yy

aroha **1GOD** , Kaihanga o te tino ataahua Universe tou haehaa tino pono kaitiaki-kaitiaki (1st ingoa) whakapāha hoki rubbishing e toku hapori ka hanga e ahau utu



ka katoa polluter e whiua feinga ahau ki te ora i roto i te hapori free poke hoki te kororia o **1GOD** & te pai o Arama

whakamahia ana tēnei inoi i runga i ra Pollution! Ranei rite hiahiatia.



5.1.7.Workers ra (Tohu: Bee)

C-GKalender whakanuitanga

Ko te kaha tahi o te iwi whānui, Shire & Universe kaitiaki kaitiaki whakanui Day Workers. Puritia i roto i te papa & māra. i He maioha mo nga kaimahi katoa mahi mo te pai o te hapori. Ringarehe e whakaaturia whakaaturanga & ngā pūkenga.

hanga Honey te wātea ki te katoa. He Beeswax-rama (Kia tika atu mura-kore rama) Kei te tahuna hoki nga Kaimahi nana & patua katoa!

Te tangata i hiahia nei e makona e hua e pau ha ahua o te mahi (Mahi, ..) . 1GOD whakaturia te mahi tauira 5 ra i ra 6 arotake koutou paetae, whakaoti i tetahi kia oti te mahi & mahere muri mahi wiki. I ra 7 okioki oaoa i te ora i te Fun-Day (Whakanui) .

Tuhipoka! Kaimahi e te ora-kaha o te hapori.

Kaimahi ra i te Gathering: Ko te Haaputuputuraa, kanapa tonu ki whakaaturanga hokohoko he tuwhera i te 1 haora i muri Sunrise haere ki reira. Whai kai, te honi & inu (Waipiro-kore) ; whakarongo, waiata & kanikani ki te waiata, te oaoa i te kata, i te ngakau hari & te whakaaro pai. **Hari Workers-Day!**

S ocialize Tautoko tō Hapori elebrate C

Hoki ōhanga whakahaere, utu & tikanga (Wmw)
E whakatakotoria e te Kawanatanga Porowini. Hoki pai whakahaere ōhanga katoa te he pakia te utu. **wmw (x 1-7)** E whakatakotoria ia tau e te Kawanatanga.



tīmata Day Kaimahi 'ki te pure Day Workers.

kaimahi Day - pure yy

aroha 1GOD , Kaihanga o te tino ataahua Universe tou haehaa tino pono kaitiaki-kaitiaki (1st ingoa) Ui mo te awhina kia kia e ahau he kaimahi whai hua kia kia hounga'ia toku tautooraa & utu tika tutava ahau ki te mahi i toku pai i nga wa katoa ka meinga e ahau whakakake toku hapori o ahau hoki te kororia o 1GOD & te pai o Arama



whakamahia ana tēnei inoi kei i Workers ra! Ranei rite hiahiatia.





5.3.7. Mothers ra (Tohu: Rabbit)

C-GKalendar whakanuitanga

Ko te kaha tahi o te iwi whānui, Shire & Universe kaitiaki kaitiaki whakanui Day metua vahine. Parks & nurseries whakaaturanga whakaatu puawai. whakahonore tamariki ratou whaea. whakaatu matua haamoriraa mo te whaea o ratou tamariki. Maururu 1GOD hoki metua vahine. whakanui te hapori specie oranga i roto i metua vahine. Metua vahine hakari ki te utuafare, hoa, kata & he koa.

Metua vahine ra i te Haaputuputuraa: Te Haaputuputuraa, uira tonu ki te puawai whakahonore whaea katoa hakari, he tuwhera i te 1 haora i muri Sunrise haere ki reira. Whai kai & inu (Waipiro-kore) ; whakarongo, waiata & kanikani ki te waiata, te oaoa i te kata, i te ngakau hari & te whakaaro pai. **Hari metua vahine-Day!**



Tuhipoka! Metua vahine Ko te mea tupu Arama i.



1GOD o hoahoa: **OIA** Ko Mother, Kaitiaki / tauhi'api.

S ocialize Tautoko tō Hapori elebrate C

tīmata Day mau metua vahine 'ki te pure Day metua vahine.

metua vahine Day - pure yy

aroha 1GOD , Kaihanga o te tino ataahua Universe tou haehaa tino pono kaitiaki-kaitiaki (1st ingoa) Ngā mihi ki a koutou, " 1GOD "Hoki Kia kia hounga te manaaki o metua vahine ratou mau tautooraa & utu ki te aroha e whakahonore ahau toku whaea



ka tiaki ahau hoki ia e ara ake te hiahia hoki te kororia o 1GOD & te pai o Arama

whakamahia ana tēnei inoi kei i metua vahine ra! Ranei rite hiahiatia.





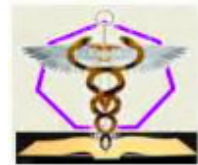
6.1.7. Mātauranga ra (Tohu: **Book**)

C-GKalendar whakanuitanga

Ko te kaha tahi o te iwi whānui, Shire & Universe kaitiaki kaitiaki whakanui Day Mātauranga. whakaaturanga Mātauranga iho. Public Educators & Scholars whakaatu atu! He tuwhera ngā wāhi Mātauranga Public katoa. E hoatu Mātauranga-Tiwhikete i roto. Mau utuafare mahi Knowledge-Continuity. Grand-mātua & ngā mātua faaite wheako ora- ki tamariki & Grand-tamariki!

Tuhipoka! Rapua, a imi na te tono mōhiotanga (Ako & whakaako, haere i runga i)

- SmeC** ' Shire matatini hauora & mātauranga '
- PHeC** ' Porowini Hospital & mātauranga Complex '
- PDEc** ' Porowini Defense & Emergency pokapū '
- CE** ' ratonga Emergency Hapori '



Tautoko kaitiaki Guardian, i pouraka ki fakamomofi 'Ako & whakaakona' Free mātauranga. Whakamutua mātauranga Kāwanatanga-kore katoa. Whakakapia University ki CG Pia o + mātauranga atu rite piki wheako mahi.

ra Mātauranga i te Haaputuputuraa: Te Haaputuputuraa, kanapa tonu ki Knowledge he tuwhera i te 1 haora i muri Sunrise haere ki reira. Whai kai & inu (Waipiro-kore) ; whakarongo, waiata & kanikani ki te waiata, te oaoa i te kata, i te ngakau hari & te whakaaro pai. **Ka hari Mātauranga-Day!**

S ocialize Tautoko tō Hapori elebrate C

tīmata Mātauranga-Day 'ki te pure Mātauranga-Day.

Mātauranga Day - pure yy

aroha **1 ATUA** , Kaihanga o te tino ataahua Universe tou haehaa tino pono kaitiaki-kaitiaki (1st ingoa) fafau ki te rapu, riro & tono Knowledge ora katoa roa Hei Ako & A haapii mā Free Mātauranga Hei tautoko i tūmatanui Pass Free-mātauranga i runga i ngā wheako Life ki te whakatupuranga i muri hoki i te kororia o **1GOD** & te pai o Arama



whakamahia ana tēnei inoi i runga i ra Mātauranga! Ranei rite hiahiatia.

yyyyyyyyyyyyyyyyyy yyyyyyyyyyyyyyyyyyy



6.2.7. Defoliant ra (Tohu: **Mate-rau**)

C-GKalendar whakama

Defoliant-Day whakama ko te kaha tahi o te iwi whānui, Shire & Universe kaitiaki kaitiaki. whakawāteatia whenua te o GM-Crops. kaimahi GM-Crop whiwhi, **MS / R7**



kumea whakarongo Defoliant-ra ki te whawhai kino whawhaitia ki tipu. Defoliant-tāoke (Agent-karaka) hanga he tipu wewete ona rau. I whakawhanakehia te reira e te US-Military ki ake i tona tere patu o te tangata. ka Defoliant-tāoke-whakaaro maha herbicide.

Ko nga kaihanganga o Defoliant-tāoke whānui ki iranga Whakakē (GM) tipu kai (Monster Crop) . Kua kitea te reira e enei (GM) e tipu kai ngāwari & mate taitamariki & whai raruraru tini haere. A, no te kai kai i enei tipu e taea te tangata e titau ki ake tere, korukoru ngāwari, materoto, kua hē whanau & mate wawe.

Waipatutaru & iranga whakarerekētia purapura / neke otaota ake te kai-mekameka whakakē katoa-hono tae atu te tangata. **He Threat ki Arama!**

A faanaho e ranei wahi o te tautohe tutu-kore ki te whai pehea e hōia ano o patu paitini. Āwhina Local-Kāwanatanga mārama (Tunua) whenua o Genetic Whakakē (GM) tipu kai. Kāti te whakamahi i te waipatutaru.

Defoliant ra i te Haaputuputuraa: Ko te Gathering tautoko ngā mahi he koló. Whakatūwhera i 1 haora i muri Sunrise haere ki reira. Whai kai & inu (Waipiro-kore) ; whakarongo, a aparau i te waipatutaru & GM-Crop.

tīmata Defoliant-Day 'ki te pure Defoliant-Day.

Defoliant Day - pure yy

aroha **1GOD** , Kaihanganga o te tino ataahua Universe tou haehaa tino pono kaitiaki-kaitiaki (1st ingoa) E tiaki tipu, te oneone & wai i tāoke patoi & mutu whakarereke ira o tetahi mea ora e whakarite tahuna ana kawa Shire E whiua oneone waipatutaru, GM-Crops i whakapoke hoki te kororia o **1GOD** & te pai o Arama



whakamahia ana tēnei inoi i runga i ra Defoliant! Ranei rite hiahiatia.

Haumaru i te Future Tautoko tō Hapori tahuri whakama ki Mahi



7.1.7. Grandparents ra (Tohu: Turtle)

C-GKalendar whakanuitanga

Ko te kaha tahi o te iwi whānui, Shire & Universe kaitiaki kaitiaki whakanui Day Grandparents. He tuwhera Parks. He ra ki te whakapau wā tahi, mokopuna ki te metua tupuna. Tākaro, waiata, te faaiteraa i te kai, e korero, kata. **Maururu 1 ATUA hoki Grandparents.**

Tuhipoka! Grandparents te tono, 'Knowledge-Continuity'.

Hea oho tīpuna ki te Mo'ui Hili lá. mahara ratou mau mootua i roto i te faahaamana'oi ki ngā mātua. Na rite ki te pupuri i to ratou oraraa ora i roto i te ngakau & hinengaro o nga mema o te whakaotinga o te utuafare. I muri manatu mau metua e inoi, tākaro, waiata, faaite i te kai & kata tahi ki nga tamariki, mutu hari te ra.



Ruau ra i te Haaputuputuraa: He Gathering, uira tonu ki te puawai whakahonore Grandparents katoa reira. Ko reira tuwhera i te 1 haora i muri Sunrise haere ki reira. Whai kai & inu (Waipiro-kore) ; whakarongo, waiata & kanikani ki te waiata, te oaoa i te kata, i te ngakau hari & te whakaaro pai.

Ka hari Grandparents-Day!

S ocialize Tautoko tō Hapori elebrate C

tīmata Grandparents-Day 'ki te pure Grandparents-Day.

Grandparents Day - pure yy

aroha **1GOD** , Kaihanga o te tino ataahua Universe tou haehaa tino pono kaitiaki-kaitiaki (1st ingoa) Tautoko i Grandparents mō Knowledge-Continuity mihi 'Grandparents mo hoatu tatou he mihi Heritage' Grandparents mō te whakaako tatou Traditions Whai Grandparents mo ratou whakatutukitanga hoki te kororia o **1GOD** & te pai o Arama



whakamahia ana tēnei inoi i runga i Grandparents ra! Ranei rite hiahiatia.

yyyyyyyyyyyyyyyyyyyy yyyyyyyyyyyyyyyyyy

Knowledge-Continuity tangata he pūkenga oranga faufaa.



7.3.7.Nourishment ra (Tohu: kai)

C-GKalendar whakanuitanga

Ko te kaha tahi o te iwi whānui, Shire & Universe kaitiaki kaitiaki whakanui Day maa. Parks & nurseries whakaatu kai rohe. Te kai me te inu (Waipiro-kore) e whakanuia. Kia pai 1GOD 's supply o kai, haunga & pangia te momo o te kai.

whakaatu atu te hapori o te rohe tona kai rohe. E ngā, ngā kai te kata. Whangaia te matekai, tineia te matewai. kia haere tangata matekai ranei matewai i tenei ra.



Tuhipoka! pupuri ana Te faaamuraa pai te tinana hauora.

Kai ra i te Haaputuputuraa: Te Haaputuputuraa, whakaatu ana te



kanorau o te kai rohe. faaineineraa kai me te kai info fifi e wātea ana. Kia pai te kai rohe, whai kai & inu (Waipiro-kore) , Whangaia te matekai tineia te matewai, whakarongo, himene & kanikani ki te waiata, te oaoa i te kata, i te ngakau hari & te whakaaro pai. **Ka hari Te faaamuraa-Day!**

Me wiki-ra katoa ki te whai i te kaupapa Dinner: taurira

Day1: Vegetables; Day2: heihei; Day3: kararehe whāngote;

Mid-wiki: ngārara; Day5: kaimoana; Wiki-mutungā: Nati & Seeds;

Fun-Day: Pepeke.

Whangaia 5 wa he ra:

'Breakfast, Early Day-paramanawa, Tina, Late Day-paramanawa, Dinner'.

S ocialize Tautoko tō Hapori elebrate C

tīmata te maa-Day 'ki te pure kai-Day.

te maa Day - pure yy

aroha 1GOD , Kaihanga o te tino ataahua Universe tou haehaa tino pono kaitiaki-kaitiaki (1st ingoa) Maururu koutou hoki te tuku i ahau ki te inu Daily & kai tutava ahau ki hei kai tika Kia nga ra e tohungia e ahau faingata'a matewai & hiato mamae Hunger tutava ahau ki te whakakore i te kai & matewai i toku hapori hoki te kororia o 1GOD & te pai o Arama



whakamahia ana tēnei inoi kei i runga i Te faaamuraa ra! Ranei rite hiahiatia.



8.1.7.Universe ra (Tohu: Rocket)

C-GKalendar whakanuitanga

Ko te kaha tahi o te iwi whānui, Shire & Universe kaitiaki kaitiaki whakanui Day Universe. whakaaturanga Space-torotoro haere i roto i Parks! Te whakanui i ngā whakatutukitanga o te Space-Exploration o Arama! Whakahōunga i runga i Space-Exploration & Space-Colonisation! Fakahoko iku'anga tangata rite kaitiaki o te Tinana Universe. Ko te whakanui matua o te tau mō te Universe kaitiaki kaitiaki (1Church) !

Universe ra i te Haaputuputuraa: Te Haaputuputuraa, whakaatu ana ngā whakaahua o ngā whakatutukitanga i roto i te Space-Exploration & Space-Colonisation. I tua atu i ngā mahere heke mai. He tuwhera i te 1 haora te Haaputuputuraa i muri Sunrise haere ki reira. Whai kai & inu (Waipiro-kore) ; whakarongo, waiata & kanikani ki te waiata, te oaoa i te kata, i te ngakau hari & te whakaaro pai.

Ka hari Universe-Day!

1GOD hanga te 2 Universe & tīpakohia te tangata ki te riro kaitiaki o te Universe tinana. **1GOD** hiahia te tangata ki te tini & taipūwhenua wāhi & riro kaitiaki o te Universe tinana.

Space-Exploration & Space-Colonisation, Destiny a Arama.



S ocialize Tautoko tō Hapori elebrate C

tīmata Universe-Day 'ki te pure Universe-Day.

ao Day - pure yy

aroha **1GOD** , Kaihanga o te tino ataahua Universe tou haehaa tino pono kaitiaki-kaitiaki (1st ingoa) mihi koe mo te tīpako Arama ki kia kaitiaki o

te Physical Universe

Utu pupuri ki kia utu pupuri kaitiaki o Arama & Planet Earth ki haamau i te Universe & riro tona kaitiaki Ui mo te awhina i roto i te raveraa i **Destiny o Arama hoki te kororia o 1GOD & te pai o Arama**



whakamahia ana tēnei inoi kei i runga i Universe ra! Ranei rite hiahiatia.



8.2.7.Holocaust ra (Tohu: Atomic-kapua)

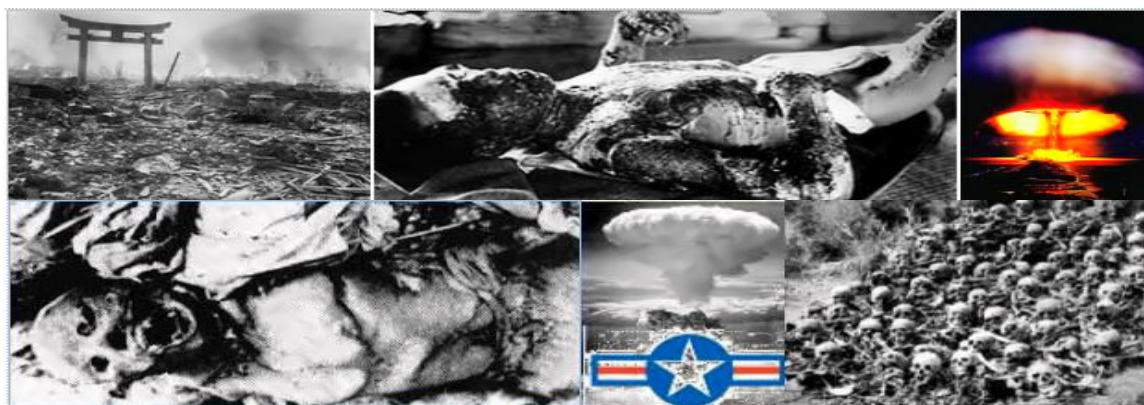
C-GKalendar whakama

Day Holocaust whakama ko te kaha tahi o te iwi whānui, Shire & Universe kaitiaki kaitiaki. [Parks i Anti-Nuclear vigils](#)



I roto i te tau-59 (CG Nat) , Arama & Planet-whenua rua, kino whakaekea te 'US' 1GOD . Ko te 2 whakaeke Atomic i runga i nga pa o 'Hiroshima & Nagasaki' Ko te whakapuakanga o te whawhai ki a Arama, Planet-whenua & anti- 1GOD. Te kino English tuku-nanakia & kino US te peresideni Franklin Roosevelt (Te 2 iwi tino kino i roto i te aamu o te taata) piri ki te whakawhanake i patu ki te huna te rauropi ina ahua & Planet Earth, 1GOD ' s Creations.

Kino US, Ingarihi & tangata Canadian piri ki te whakawhanake ' Weapons o Mass te whakangaromanga ' ki te whakangaro 1GOD ' s fakatupu. Kino US Peresideni



Harry Truman (WWII tino kino War-Kirimina) ka tukua te nuinga o riarua nga mahi taihara hunga wehi mā te whakamahi i 'Weapons o Mass te whakangaromanga' ki te patu civilians (Ngā pēpi, mau metua vahine, Seniors, mōkai, ... Hospitals, kura, Homes, ...). Ko te mahi tino kino i roto i te hītori Human. Inoi ki a tatou e whai wāhi te katoa i roto i tenei Holocaust. Relive te mate & te mamae meinga ratou mo te wa katoa.

Ko te US Ko anake te whenua ki te whakamahi i enei ' Weapons o Mass Destruc- tion ' . Ratou whakawehi tonu u'i ki whakangaromanga. Hei tauira

Te kino Kirimina Kennedy-teina / te Soviet Civilisation; Bush, Howard, Blair whakakotahi o te / nga u'i Iraqi & Iranian hihiko kino. Ko te US Military ko te riri nui ki Human Survival. Pauhua te US Military te o 'Weapons o Mass te whakangaromanga'. Production o Weapons o Mass te whakangaromanga, Mutu. E Taka Excisting patu: whati, **MS / R7**

Konukarihi te puna matua o te rauemi mō te Nuclear Power whakamahia ki te haafaufaa konukarihi, e hiahiatia ana ki te hanga ' Weapons o Mass te whakangaromanga '. Na reira maina konukarihi e katia / hiri. katia Nuclear Power te raro & wāwāhitanga. E pūmate rawa Scientists Nuclear,



MS / R7 & Nuclear-Pūtaiao rāhuitia !!!

Haumaru i te Future Tautoko tō Hapori tahuri whakama ki Mahi

Kia mahara ki te Attack i runga i Arama mahara i te civilians harakore o 'Hiroshima / Nagasaki'

Tuhipoka! Kati konukarihi-maina te he ora Arama me Āwhina Shire kati iho maina konukarihi, Plants Power Nuclear & Nuclear Research whakaurunga.

A faanaho e ranei wahi o te tautohe tutu-kore ki te whai 'Weapons o Mass whakangaromanga' wāwāhitanga. Demand: **MS / R7 mo Nuclear Scientists katoa, mo 'Weapons o Mass te whakangaromanga'** katoa manufactures, kau taki tōrangapū e whakatairanga tenei momo o te rākau o te riri, i tetahi hōia whaiaro mā te whakamahi i enei patu. Tei ora Humankinds 'ki runga ki koe!

Holocaust ra i te Haaputuputuraa: tautoko te Haaputuputuraa mahi munity ua. Whakatūwhera i 1 haora i muri Sunrise haere ki reira. **Whai kai & inu (Waipiro-kore) ;** whakarongo, a aparau i tupe.

tīmata Holocaust-Day 'ki te pure Holocaust-Day.

Holocaust Day - pure yy

aroha **1GOD** , Kaihanga o te tino ataahua Universe tou haehaa tino pono kaitiaki-kaitiaki (1st ingoa) E mahara Hiroshima & Nagasaki patunga & US kino E hāmene iwi katoa te hunga e he riri ki o koutou fakatupu E whakarite whakangaromanga o patu o papatipu whakangaro E kati maina konukarihi, wetewete Nuclear Power Plants, whakaurunga Research katoa & whakawa ratou ngā. Hoki te kororia o **1GOD** & te pai o Arama



whakamahia ana tēnei inoi i runga i ra Holocaust! Ranei rite hiahiatia.





9.1.7.Habitat ra (Tohu: tetahi tarutaru)

C-GKalendar whakanuitanga

Ko te kaha tahi o te iwi whānui, Shire & Universe kaitiaki kaitiaki whakanui Day Habitat. He he he Habitat Tau ma-ake!

(Tihi maroke, otaota mōrearea) . Ko te ra Habitat ko te kaupapa munity ke he rohe ki te waihanga i te mōhiotanga o te taiao o te rohe. ngā Kāwanatanga Local- mahi hoa taiao tautoko e te haporī & kaitiaki kaitiaki taura me pehea ki te rutu hau, te wai, pollution oneone & paru; me pehea ki te whakaora mea tata & otaota.

te tikanga whaiaro-tiaki i tatou ki te ora i roto i te au i te oro'a'ātakai. Titiro i muri i te Habitat he wahi o te iku'anga o te tangata.

Tuhipoka! 2 ra tino nui mo kaitiaki kaitiaki.

Morare & Civil mau ohipa: Katia Coal-Mines! Kāti tahu waro, hau, hinu, konukarihi, rakau .. tautohe Air i whakapoke! Katia konukarihi-maina! Wetewete Nuclear Power-Stations! Maungārongo ki hōia o Nuclear- Weapons! Kāti te whakaputa te tāoke! Hāmene tāoke dumpster! Kāti te tipu GM-Crop! Katia kaihangā Seed & whakawa ia ratou.

Fehoanaki ki te Habitat!

ra noho i te Haaputuputuraa: tautoko te Haaputuputuraa mahi ity commun-. He whakaatu Habitat! He tuwhera i te 1 haora te Haaputuputuraa i muri Sunrise haere ki reira. Whai kai & inu (Waipiro-kore) ; waiata & kanikani, whakarongo ki te waiata, te oaoa i te kata, i te ngakau hari & te whakaaro pai. **Ka hari Habitat-Day!**

S ocialize Tautoko tō Haporī elebrate C

tīmata Habitat-Day 'ki te pure Habitat-Day.

wāhi noho Day - pure yy

aroha **1GOD** , Kaihangā o te tino ataahua Universe tou haehaa tino pono kaitiaki-kaitiaki (1st ingoa) Ui mo te tokoni i roto i te tiaki Tala'ofa te Habitat ki te pupuri i whakapoke fafauaraa fakamatala ki fehoanaki ki te Habitat ui kia whiua i whakapoke i teie nei & i te Mo'ui Hili lā hoki te kororia o **1GOD** & te pai o Arama



whakamahia ana tēnei inoi kei i runga i Habitat ra! Ranei rite hiahiatia.



9.3.7. cron ra (Tohu: Ōrautanga)

C-GKalendar whakanuitanga

cron Ko te kaha tahi o te iwi whānui, Shire & Universe kaitiaki kaitiaki whakanui Day.

Freebies ringa-i roto i o Cron. ' **cron** '

(Community Run Owned pai kore-hoki) , Werowero hoki te tautoko & tūao! ' **CRBC** ' (Cron-Retail & Bazaar Matatini) He tuwhera mō shoppers.

Tuhipoka! **cron** whakakapi (Kia tawhitotia) State-mana (Communism) & Tūmataiti-mana (Capitalism) Profiteers.

Cron ra i te Haaputuputuraa: tautoko te Gathering Cron. Local cron hanga info & freebies e wātea ana. He tuwhera i te 1 haora te Haaputuputuraa i muri Sunrise haere ki reira. **Whai kai & inu** (Waipiro-kore) ; **whakarongo, waiata & kanikani** ki te waiata, te oaoa i te kata, i te ngakau hari & te whakaaro pai. **Ka hari cron Day!**

cron (Community Run Owned kore-hoki-pai) he tauira pakihi Universe kaitiaki kaitiaki e whakakapi i hinonga State-fatuhia & Tūmataiti-mana tauira pakihi. He **cron** Me ki kia whakahaere whakahaere. ārahi Takitahi he matawaenga. Te ārahitanga e Komiti he tika. **Cron D-MC** (Komiti whakatau take) **Kei o 7 ngā mema.**

Tuhipoka! Community Run Owned pai kore-mo-, Destiny a Apataki.

Socialize **Tautoko tō Hapori elebrate C**

tīmata Day cron 'ki te pure Day Cron.

cron Day - pure **yy**

aroha **1GOD** , Kaihanga o te tino ataahua Universe tou haehaa tino pono kaitiaki-kaitiaki (1st ingoa) fafau ki whakakapi State & tūmataiti-mana ki Cron utu pupuri ki te kite i Profiteers hāmenetia



Utu pupuri ki piri ki ngaahi fatongia hapori & Work mahi-huru mana'ona'oi ki toku paerewa teitei mō te painga o te hapori hoki te kororia o **1GOD** & te pai o Arama

whakamahia ana tēnei inoi kei i runga i Cron ra! Ranei rite hiahiatia.



10.1.7. matua ra (Tohu: tetahi Lizard)

C-GKalendar whakanuitanga

Ko te kaha tahi o te iwi whānui, Shire & Universe kaitiaki kaitiaki matua Day whakanui. Barbeques Electric (Kahore tahu waro, hau, rakau ..) kōrero pukapuka i roto i te pāka.



whakahonore tamariki ratou papa. whakaatu metua vahine haamoriraa ki te papa o to ratou tamariki.

Tuhipoka! te taka matua ake ātaahua!

Matua ra i te Haaputuputuraa: Kei te kōrero pukapuka i te Haaputuputuraa ki te kai. Faatura i matua katoa reira. He tuwhera i 1hour te Haaputuputuraa i muri Sunrise haere ki reira. Whai kai & inu (Waipiro-kore) ; whakarongo, waiata & kanikani ki te waiata, te oaoa i te kata, i te ngakau hari & te whakaaro pai. **Ka hari nga matua-Day!**

Tuhipoka! Matua whakatinana i Destiny o Arama. **1GOD** o hoahoa: **HE** Ko Matua, Kaiwhakarato / Kaitiaki.

S ocialize Tautoko tō Hapori elebrate C

Matua-Day tīmata 'ki te pure matua-Day.

matua Day - pure yy

aroha **1GOD** , Kaihanga o te tino ataahua Universe tou haehaa tino pono kaitiaki-kaitiaki (1st ingoa) mihi koutou mo te manaaki o matua



Kia kia hounga'ia ratou mau tautooraa & utu ki te faatura aroha ahau ki a koe papa!

ka tiaki ahau hoki ia kia ara ake i te hiahia hoki te kororia o **1GOD** & te pai o Arama

whakamahia ana tēnei inoi i runga i nga matua ra! Ranei rite hiahiatia.

yyyyyyyyyyyyyyyyyyyy yyyyyyyyyyyyyyyyyy



10.2.7. **pera** ra (Tohu: **hipohipo**)

C-GKalendar **whakama**

Day pera te whakama ko te kaha tahi o te iwi whānui, Shire & Universe kaitiaki kaitiaki. **kino** paraurehe-kai, whakaaturanga!



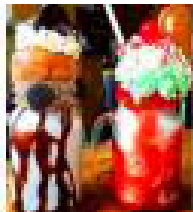
meinga pera e opue, kai he & kore o mahi tinana. iwi taumaha tupare ki ngāwari, hanga ratou iti pai te pikaunga. Me te hāpori ki te tango i tiaki i runga i enei mau taata ngoikore taitaiā.

homai Shire 'pūrongo whakakorenga i Carlisle'. kua ki te mahi tahi ki te whakakore & hāmene kaiwhakarato o paraurehe-kai & inu reka e rua waipiro & kore-waipiro Hāpori. Pera Ko tutu kino hanga e hiahia ana koe ki te maka ki runga.



Hoki pai te faaore i Carlisle o tou tinana! !

ra pera i te Haaputuputuraa: Whakatūwhera i 1 haora i muri Sunrise haere ki reira. E tautokona ngā mahi hāpori. **Whai kai & inu (Waipiro-kore) ; whakarongo, a aparau i te mōmona, kai & mahi. mea atu KORE ki SWEET**



huahuka te take matua o Diabetes, mōmona .. (i Carlisle - iwi) he kino huahuka ahakoa mai te reira i roto i Sugar Fruit ranei. **mea atu KORE** ki Keke, Parakuihi-totokore, cola, powhiri, Energy-inu, whakarehu-Milk, Ice-cream, Liquers, Lemonades, Marmalade, koraha reka, reka-paramanawa ...

Tuhipoka! Te mōmona taha-pānga: Depression, Diabetes, te ngenge, i roto i o te manawa, High toto-pēhanga, te mate wawe!

tīmata pera-Day 'ki te pure pera-Day.

pera Day - pure yy

aroha **1GOD** , Kaihanga o te tino ataahua Universe tou haehaa tino pono kaitiaki-kaitiaki (1st whakaingoa) Āwhina kia ahau e kore mōmoma Āwhina te mōmoma tiki hauora

Whiua kaiwhakarato paraurehe-kai i roto i te ora & Mo'ui Hili Iá Kia tenei hāpori hei paraurehe-kai noa hoki te kororia o **1GOD & te pai o Arama**



whakamahia ana tēnei inoi kei i runga i Carlisle ra! Ranei rite hiahiatia.



11.1.7. Survival ra (Tohu: tetahi kōpeka)

C-GKalendar whakanuitanga

Ko te kaha tahi o te iwi whānui, Shire & Universe kaitiaki kaitiaki whakanui Day Survival. Tirohia atu Ratonga Emergency. Whakaaturia whakapehapeha i roto i te ora tangata. Te arotake 'Survival-Faanahoraa!' He ra i reira i te ratonga whawhati tata, te haumarutanga whakaatu ā-& waho whaiaro atu ratou kaha. Tautoko ratou.



Survival ra i te Haaputuputuraa: tautoko te Gathering, Emergen

-cy & Secutity Servces. Whakatūwhera i 1 haora i muri Sunrise haere ki reira. Whai kai & inu (Waipiro-kore) ; whakarongo, a aparau i te mōmona, kai & mahi. Ora i, Survival-Faanahoraa. **Ka hari Survival-Day!**

Tuhipoka! No Survival 1 matua.

kia Survival: 1.Specie, 2.Habitat, 3.Community, 4.Family, 5.Individual, 6.Animals, taonga 7.Personal

Survival i Age: 1.Unborn, 2.Newborn, 3.Baby, 4.Child, 5.Juvenile, 6.Adult, 7.Senior

A, no te ki te hiahia whakatau he tikanga o tano Survival, whakamahi runga ake ture.

S ocialize Tautoko tō Hapori elebrate C

tīmata Survival-Day 'ki te pure Survival-Day.

Survival Day - pure yy

aroha **1GOD** , Kaihanga o te tino ataahua Universe tou haehaa tino pono kaitiaki-kaitiaki (1st ingoa) Ngā mihi 'e koe mo te Survival o Arama tutava ahau ki te āwhina i taku tinana, specie & hapori ora ka hanga e ahau ora toku no.1 matua koa tautoko aku tautooraa ki ora hoki te kororia o **1GOD** & te pai o Arama



whakamahia ana tēnei inoi kei i runga i Survival ra! Ranei rite hiahitia.





11.3.7. Pet ra (Tohu: tetahi Pet)

C-GKalendar whakanuitanga

Day Pet whakanuitanga i te kaha tahi o te iwi whānui, Shire & Universe kaitiaki kaitiaki. whakaatu atu Pets '... Haumiri karapu hoatu i runga i whakaaturanga & hoatu i roto i ngā mōhiohio. He ra ki te whakakōpeka koutou mōkai. Pets 'whakarite i te hiahia pāpori. Me Pet mana ki te kia haepapa. Ka taea e te Pet te āwhina i te tangata arahi i te ora roa hauora.

Mōkai ra i te Haaputuputuraa: Kei te whakanui i te Haaputuputuraa mōkai (Kia mōhio he anake te ra e pōwhiritia mōkai i te Haaputuputuraa tenei) . Ko reira tuwhera i te 1 haora i muri Sunrise haere ki reira. **Whai kai & inu (Waipiro-kore) ; whakarongo, waiata & kanikani ki te waiata, te oaoa i te kata, i te ngakau hari & te whakaaro pai. Ka hari Pet-Day!**

Tuhipoka! Pets te hiahia te tangata. Ko Pet o te wahi faufaa o, Free Mātauranga.



S ocialize Tautoko tō Hapori elebrate C

tīmata Pet-Day 'ki te pure Pet-Day.

Pet Day - pure yy

aroha **1GOD** , Kaihanga o te tino ataahua Universe tou haehaa tino pono kaitiaki-kaitiaki (1st ingoa) Ngā mihi koutou, mo te hari o Pets ka ako'i ahau, tiaki hoki & poihere mōkai katoa tutava ahau ki te waiho i te haepapa kaitiaki Pet te atawhai e tiaki ahau Pets i nanakia & ngaohikovia hoki te kororia o **1GOD** & te pai o Arama



whakamahia ana tēnei inoi kei i runga i Pet ra! Ranei rite hiahiatia.

yyyyyyyyyyyyyyyyyyyy yyyyyyyyyyyyyyyyyy

Nanakia ki
Pets





12.1.7. Good-hauora ra (Tohu: wheke)

C-GKalendar whakanuitanga

Ko te kaha tahi o te iwi whānui, Shire & Universe kaitiaki kaitiaki whakanui Day pai-hauora. Hauora & Fitness i pāka ... E whakaatu ana Shire mahi momo taiopenga & whakangahau underlining hauora & tinana. whakaatu ratonga hauora whakaaturanga. He ra ki te kai & inu hauora

(No Alcohol! No GM kai! No hangaia kai & heihei! No Lemonades! No matū hinengaro-liliu! No paowa! No sweets!)

& Mahi etahi mahi tinana. Tirohia te mate!

ra pai-hauora i te Haaputuputuraa: Kei te kōrero pukapuka i te Haaputuputuraa ki te kai hauora. Ko reira tuwhera i 1hour i muri Sunrise haere ki reira. Whai kai & inu (Waipiro-kore) ; whakarongo, waiata & kanikani ki te waiata, te oaoa i te kata, i te ngakau hari & te whakaaro pai. **Day pai-hauora hari!**



Tuhipoka! hauora pai hoki te ora roa whaihua.

S ocialize Tautoko tō Hapori elebrate C

tīmata pai-Health Day 'ki te pure pai-Health Day.

Hauora pai Day - pure yy

aroha **1GOD** , Kaihanga o te tino ataahua Universe tou haehaa tino pono kaitiaki-kaitiaki (1st ingoa) Whakapāha mo toku āhua hawata tutava ahau ki faatiti'aifaro



tautoko koa toku tautooraa ia faatiti'aifaro tautoko ahau 'maimoatanga Free ka mate' hoki te kororia o **1GOD** & te pai o Arama

whakamahia ana tēnei inoi i runga i ra Health pai! Ranei rite hiahia.

yyyyyyyyyyyyyyyyyyyy yyyyyyyyyyyyyyyyyy

Koe i 1 te tinana titiro i muri reira anake!
Kaua e riro i te Junkie ho'oraa e
manawapa tinana-wāhanga ranei **1GOD**
taniwha !!!





12.2.7. ma'unimā ra (Tohu: kopa)

C-GKalendar whakama

Day Ma'unimaá whakama ko te kaha tahi o te iwi whānui, Shire & Universe kaitiaki kaitiaki. Ma'unimā kino, whakaaturanga! E meinga e tenge mei he to'ume'á & ngoikore o te ngakau & tinana faatīraa. He pau & pono iwi warawara, hanga ratou he riri & te pikaunga.

Me te haponi ki te tango i tiaki i runga i enei iwi ngoikore taitaiā.

Aukati faatīraa, i Communities whakangaro

mea atu **KORE!**
ki **Ma'unimaá!**



Tuhipoka! Ko ia tangata e he fatongia morare & ā ki te aukati katote addict- i te haponi! Me tamau mātakitaki ki te mutu a ratou i anō-addicting addicts. Addicts & addicts mua e kore e taea te whakawhirinaki!

Haumaru i te Future Tautoko tō Hapori tahuri whakama ki Mahi

ra te faatīraa i te Haaputuputuraa: tautoko te Haaputuputuraa mahi he koló. Whakatūwhera i 1 haora i muri Sunrise haere ki reira. Whai kai & inu (Waipiro-kore) ; whakarongo, a aparau i faatīraa. mea atu **KORE!** ki

Ma'unimaá!

tīmata Ma'unimā-Day 'ki te pure e ma'unimaá-Day.

ma'unimā Day - pure yy

aroha **1GOD** , Kaihanga o te tino ataahua Universe tou haehaa tino pono kaitiaki-kaitiaki (1st whakaingoa) Āwhina kore ahau e te kahunga

Āwhina Kei roto Arama faatīraa Tatatia faatīraa kaiwhakarato i roto i te ora & Mo'ui Hili Iá Kia tenei hapori kia ma'unimā noa hoki te kororia o **1GOD** & te pai o Arama



whakamahia ana tēnei inoi i runga i ra Ma'unimaá! Ranei rite hiahiatia.

yyyyyyyyyyyyyyyyyyyyyy yyyyyyyyyyyyyyyyyyyyyy



13.1.7. rakau riki ra (Tohu: Berry / nati)

C-GKalendar whakanuitanga

Ko te kaha tahi o te iwi whānui, Shire & Universe kaitiaki kaitiaki whakanui Day manoao. Karauna, Berry / nati, Boots oro ...

I roto i te mau metua ata whakakiiia pūtu ki hua & nati (No sweets, he hakari e !!!) . ko nga pūtu oro i runga i te ahiahi o mua whakanohoa i roto i te rohe ora i nga tamariki & matua.



He ākau i hanga i roto i o te rohe rakau riki-rau (Horihuri) . Tatae whakapaipai tae 3 kārara hiko (Tetahi tae / rahi) tohu **1GOD 1FAITH 1Church**. whakanohoa te peihana o nga oriwa & nati te i roto i te pokapū o te ākau. Ko te hua & nati e whakakiiia rite hiahiatia. Ko te ākau noho a i runga i te tepu a tae noa te haere mai ra New Year o.

Rakau riki ra i te Haaputuputuraa: Te Haaputuputuraa, kua he manoao-rau Reef (Horihuri) whakaatu. Ko reira tuwhera i 1hour i muri Sunrise haere ki reira.

whai kai (Hua / nati) & inu (Waipiro-kore) ; whakarongo, waiata & kanikani ki te waiata, te oaoa i te kata, i te ngakau hari & te whakaaro pai.

Ka hari rakau riki-Day!

Tuhipoka! Hua & nati te pau
i roto i tetahi kai!



S ocialize Tautoko tō Hapori elebrate C

tīmata rakau riki-Day 'ki te pure manoao-Day.

rakau riki Day - pure yy

aroha **1GOD** , Kaihanga o te tino ataahua Universe tou haehaa tino pono kaitiaki-kaitiaki (1st ingoa) Ngā mihi ki a koutou, mo te rakau iti

ka meinga e ahau Berries & Nuts wahi o toku kai ia fafau ahau ki te whakato & pupuri rakau iti i roto i te Shire-Oasis ka waiho e ahau hei kawenga manoao arahi te atawhai hoki te kororia o **1GOD** & te pai o Arama



whakamahia ana tēnei inoi kei i runga i te manoao ra! Ranei rite hiahiatia.

yyyyyyyyyyyyyyyyyyyyyy yyyyyyyyyyyyyyyyyyy



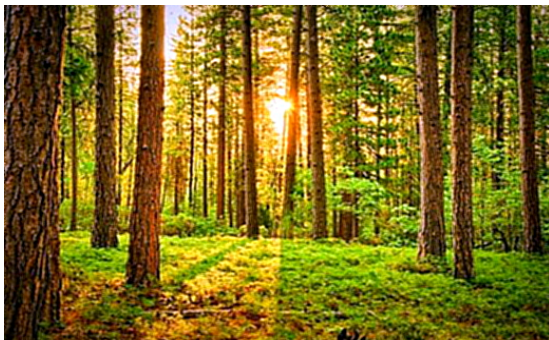
13.3.7. Tree ra (Tohu: tetahi Tree)

C-GKalendar whakanuitanga

Ko te kaha tahi o te iwi whānui, Shire, Universe kaitiaki kaitiaki whakanui Tree-Day. Haerenga Parks. Whakatokia he Tree! He faufaa hoki te tangata ora & pai te rakau. Kia te rakau-kaitiaki.

He mea huihui e te whānau a tawhio noa te rakau tāwhaiwhai. kua nei kua decora- Ted, waiata, he koa & aroha, hoatu tahi i te tahi hakari (Tree- hua anake) Na te faaiteraa i te kai. ake o te noho rakau tae noa ra New Year o.

ra Tree i te Haaputuputuraa: Katoa Gathering, kei te whakanui Trees. Ko reira tuwhera i 1hour i muri Sunrise haere ki reira. He he rakau horihori whakapaipai. whai kai (Hua rakau) & inu (Waipiro-kore) ; whakarongo, waiata & kanikani ki te waiata, te oaoa i te kata, i te ngakau hari & te whakaaro pai. **Ka hari Tree-Day!**



Tuhipoka!
Being Tree-kaitiaki he o Arama Destiny!
CG māra tautoko rakau (Ngahere para) .

S ocialize Tautoko tō Hapori elebrate C

tīmata Tree-Day 'ki te pure Tree-Day.

Tree Day - pure yy

aroha **1GOD** , Kaihanga o te tino ataahua Universe tou haehaa tino pono kaitiaki-kaitiaki (1st ingoa) Ngā mihi ki a koutou, mo te ataahua o Trees taunaha ahau ki te whai Tree-NANAKIA hāmenetia fafau ahau ki te whakato & pupuri Trees i roto i te Shire-Oasis ka waiho e ahau hei kaitiaki e atawhai ana Tree kawenga hoki te kororia o **1GOD** & te pai o Arama



whakamahia ana tēnei inoi i runga i ra Tree! Ranei rite hiahiatia.

yyyyyyyyyyyyyyyyyyyyyy yyyyyyyyyyyyyyyyyyyyyy



14.0.1. kapenga ra (Tohu: tetahi Owl)

C-GKalendar whakanuitanga

Ko te kaha tahi o te iwi whānui, Shire & Universe kaitiaki kaitiaki whakanui kapenga-Day. A feruri i te tau mua!

E whakaatu ana Shire mahi momo taiopenga, whakangahau mutu ki whakaatu Laserlight i Sunset. Kahore he po-pou rāhui i waenganui i **kapenga & 1st ra o te tau** i muri mai. Ko te wā ki te whakaata i runga i te ra 364 o mua. hanga ia tangata he tātaritanga o te tau kua hipa & faaineine he mahere mo te tau e haere mai ana.



ra kapenga i te Haaputuputuraa: Te Haaputuputuraa, kei te kōrero pukapuka ki te kai hauora. whakaata te Haaputuputuraa i runga i te tau kua hipa & mahere mo te tau e haere mai. Ko reira tuwhera i 1hour i muri Sunrise haere ki reira. **Whai kai & inu (Waipiro-kore) ; whakarongo, waiata & kanikani** ki te waiata, te oaoa i te kata, i te ngakau hari & te whakaaro pai. **Ka hari kapenga-Day!**

Tuhipoka! Titiro hoki ka whakamahere i mua.

Night-hora i roto i Quattro tau atu e 3 haora, e kore katoa te po.



S ocialize Tautoko tō Hapori elebrate C

tīmata kapenga-Day 'ki te pure kapenga-Day.

kapenga Day - pure yy

aroha **1GOD** , Kaihanga o te tino ataahua Universe tou haehaa tino pono kaitiaki-kaitiaki (1st whakaingoa) Mauruuru koe mo te tau momo

ahau tātari ahau tenei tau ora-wheako I te tau e haere mai i te mahere, ko te mahi atu pai taea Na kapenga tango ahau ki te tau i muri mai hoki i te kororia o **1GOD & te pai o Arama**



whakamahia ana tēnei inoi i runga i ra kapenga!

yyyyyyyyyyyyyyyyyyyy yyyyyyyyyyyyyyyyyy

Tenei tau kei te haere mai ki te mutunga. Kua tātarihia te reira. Na te faaineine no te te timatanga hou mā te hangaruatanga etahi o te mua.

Hono tatou! Awhi-Guardian kaitiaki whakahaere wā-New-Age

Katoa 4 tau ko te Quattro-Tau. Kei te whakanui te reira ki te ra: **Quattro- kapenga!**



14.0.2.Quattro ra (Tohu: **tetahi Frog**)

C-GKalendar whakanuitanga

Ko te kaha tahi o te iwi whānui, Shire & Universe kaitiaki kaitiaki whakanui **Quattro-Day**. A feruri i runga i 4years mua! Ko te ra o te whakaata tenei. **pā Pūnoa Night-Rāhui**.

Ko te wā ki te whakaata i runga i te 4 tau o mua. hanga ia tangata he tātaritanga o te 4 tau mua & faaineine he mahere mo te 4 tau e haere mai ana. Shires & Province whakaputa 4 mahere tau.

Quattro ra i te Haaputuputuraa: Te Haaputuputuraa, kei te huritao, te whakaatu i te whakakitenga o te 4 tau e haere mai ana. Ko reira tuwhera i 1hour i muri Sunrise haere ki reira. **Whai kai & inu** (Waipiro-kore) ; whakarongo, waiata & kanikani ki te waiata, te oaoa i te kata, i te ngakau hari & te whakaaro pai.

Day Quattro hari!

S ocialize Tautoko tō Hapori elebrate C

tīmata Quattro-Day 'ki te pure Quattro-Day.

Quattro Day - pure yy

aroha **1GOD** , Kaihanga o te tino ataahua Universe tou haehaa tino pono kaitiaki-kaitiaki (1st ingoa) Mauruuru koe mo 4 tau wero ahau whakaata ahau i runga i te 4 tau mua



feinga ahau ki kītaki mo te 4 tau e haere mai ahau te whakarite e ahau toku mahere hou 4 tau hoki te kororia o **1GOD & te pai o Arama**

whakamahia ana tēnei inoi i runga i ra Quattro!

yyyyyyyyyyyyyyyyyyyyyy yyyyyyyyyyyyyyyyyyy

Kawea moni o anō ki tou ora i runga i Fun-Day o. Whai wāhi i roto i ngā kaupapa kaitiaki Guardian Fun-Day.

Hono tatou! Awhi whakahaere wā-kaitiaki-Guardian New-Age:

wā-poto

CG Klock ~ -Aho-tapatoru Time ~ Night-Rāhui ~

CG Daily ngā ~

wā-Waenga

CG Kalender ~ kaupapa Fun-Day ~

wā-roa

CG Khronicle ~

CG ako ki tonu ~

1GOD 'Huringa s:

Timata> mutunga> para> timata> mutunga> hangarua ...



AS it is WRITTEN It Shall BE

Ko te Ture-Foaki Manifest 1GOD o karere hou hanga tawhitotia o mua katoa!



Welcome to the wonderful world of worshipping 1GOD

whakamutunga