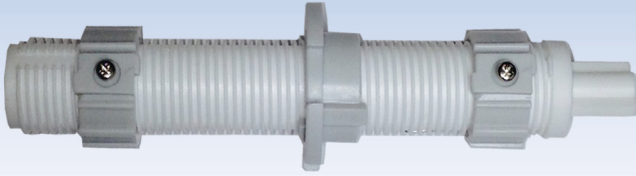
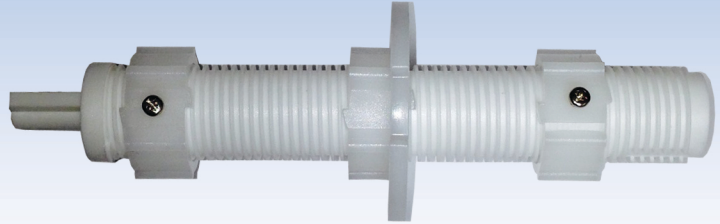


AUTO-STOP

FOR USE WITH ROLLEASE
GALAXY CLUTCH 200 & 400



ROLL-RLGAL150



ROLL-RLGAL200

The key function of this new product is to help eliminate the overall length of the chain that is used to operate the shade.
No stop balls are required to set the up and down limits.

The Auto-Stop is **easy** to install.

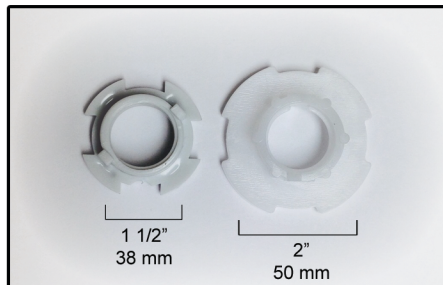
- The Auto-Stop is inserted and attached to the end of the clutch housing with a screw.
- The Auto-Stop comes with two smaller screws that are used to set the top and bottom position of the shade.
- After you install the Auto-Stop into the Galaxy clutch, you can set the top limit by tightening the first screw set (closest to the clutch). Then assemble the clutch/Auto-Stop into the RollEase tube to set the bottom limit. Make sure that the shade is rolled up to where you would like it to begin.
- To set the bottom limit, lower the shade to the desired position. Once it is at the desired position, remove the Auto-Stop from the RollEase tube. At this point you will need to tighten the second screw set (furthest from the clutch). Now the shade limits have been set. Re-install the Auto-Stop back into the RollEase tube and your shade is now complete.

This new system adds a great clean appearance to the shade
as there will be no more chain puddles on the window sills or floors.

ROLL-RLGAL150
\$2.70



*To be used
with any size
plastic or metal
continuous
chain



ROLL-RLGAL200
\$2.70

