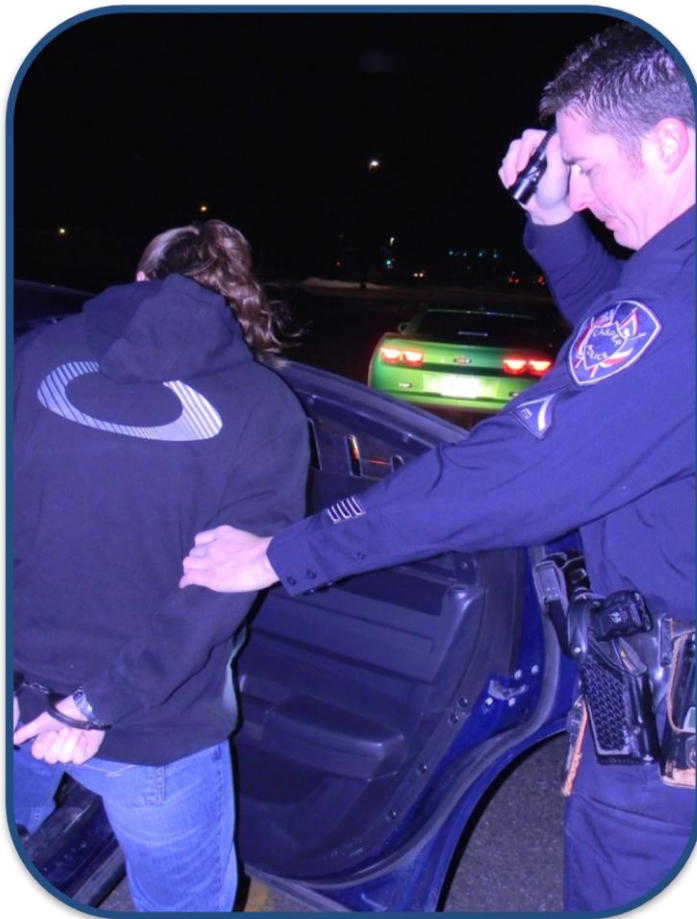


Supplemental Report

2010

ALCOHOL and CRIME in WYOMING



**Wyoming Association of Sheriffs
and Chiefs of Police**

WYOMING DEPARTMENT OF
TRANSPORTATION – Highway Safety Program

ALCOHOL AND CRIME IN WYOMING: 2010
(SUPPLEMENTAL REPORT – County Statistics)

April 2011

The analysis of the data collected by the Wyoming Association of Sheriffs and Chiefs of Police and the printing of this report was made possible through the assistance of Federal 402 Highway Safety funds received from the Wyoming Department of Transportation – Highway Safety Program. The Project was managed by Johnson and Associates of Douglas, Wyoming. The report was authored by Ernest L. Johnson, Director of Services.

Alcohol and Crime in Wyoming - 2010

Supplemental Report

INTRODUCTION

The report contains alcohol-related information collected in all twenty-three counties in the State of Wyoming for a period of twelve months (January 1 through December 31, 2010) by the Wyoming Association of Sheriffs and Chiefs of Police. Information was collected from a total of 18,946 persons who were arrested and subsequently detained in a county detention facility. It also includes statistics from persons booked into the Fremont County Alcohol Crisis Center.

This report provides detailed county specific alcohol-related information and is a supplement to the Alcohol and Crime in Wyoming – 2010¹ report.

TABLE OF CONTENTS

1. ALBANY.....	1-4
2. BIG HORN	5-8
3. CAMPBELL	9-12
4. CARBON	13-16
5. CONVERSE	17-20
6. CROOK	21-24
7. FREMONT	25-28
8. FREMONT – Alcohol Crisis Center	29-32
9. GOSHEN	33-36
10. HOT SPRINGS	37-40
11. JOHNSON	41-44
12. LARAMIE	45-48
13. LINCOLN	49-52
14. NATRONA	53-56
15. NIOBRARA	57-60
16. PARK	61-64
17. PLATTE	65-68
18. SHERIDAN	69-72
19. SUBLETTE	73-76
20. SWEETWATER	77-80
21. TETON	81-84
22. UINTA	85-88
23. WASHAKIE	89-92
24. WESTON	93-96
25. Project Manager Vita.....	97-98

¹ A PDF copy of the main report can be downloaded at <http://wascop.com> and <http://jandaconsulting.com>

Albany County Arrests
January 1, 2010 - December 31, 2010

Numbers by Department

County	Total Offenses	Misde-meanor	Felony	Domestic Violence	Resist Arrest	Assault	Public Intox	Alcohol Involved	Drugs Involved	Traffic Crash	Female	Male	Unknown Gender	Average Age
Albany County	877	805	39	46	40	15	138	734	82	54	142	712	23	28.34
Albany SO	47	39	6	3	1	4	2	33	6	1	9	37	1	27.97
Laramie PD	678	628	25	39	34	11	133	584	47	36	119	543	16	28.26
Other	7	6		2	2		1	5	1	2		5	2	23.50
UW PD	63	58	1	1			1	49	14	1	9	53	1	21.16
WHP	82	74	7	1	3		1	63	14	14	5	74	3	35.09

Percents by Department *

County	Total Offenses	Misde-meanor	Felony	Domestic Violence	Resist Arrest	Assault	Public Intox	Alcohol Involved	Drugs Involved	Traffic Crash	Female	Male	Unkown Gender
Albany County	877	91.79%	4.45%	5.25%	4.56%	1.71%	15.74%	83.69%	9.35%	6.16%	16.19%	81.19%	2.62%
Albany SO	47	82.98%	12.77%	6.38%	2.13%	8.51%	4.26%	70.21%	12.77%	2.13%	19.15%	78.72%	2.13%
Laramie PD	678	92.63%	3.69%	5.75%	5.01%	1.62%	19.62%	86.14%	6.93%	5.31%	17.55%	80.09%	2.36%
Other	7	85.71%	0.00%	28.57%	28.57%	0.00%	14.29%	71.43%	14.29%	28.57%	0.00%	71.43%	28.57%
UW PD	63	92.06%	1.59%	1.59%	0.00%	0.00%	1.59%	77.78%	22.22%	1.59%	14.29%	84.13%	1.59%
WHP	82	90.24%	8.54%	1.22%	3.66%	0.00%	1.22%	76.83%	17.07%	17.07%	6.10%	90.24%	3.66%

* Total percents may not equal 100 due to lack of information, or a single arrest involving multiple crimes.

MIP Arrests

County Department	DUI Offenses	MIP Arrests	% MIP to DUI	Average MIP BAC
Albany County	442	13	2.94%	0.148
Albany SO	24			
Laramie PD	338	12	3.55%	0.155
Other	3			
UW PD	17			
WHP	60	1	1.67%	0.080

Meth, Drugs & Public Intoxication

County Department	Total Offenses	Meth Involved	Drugs Involved	Public Intox.	Pub. Intox. Ave. BAC
Albany County	877	4	82	138	0.222
Albany SO	47		6	2	0.290
Laramie PD	678	3	47	133	0.223
Other	7		1	1	0.156
UW PD	63		14	1	
WHP	82	1	14	1	0.140

DUI Arrests

County Department	Total Offenses	DUI Offenses	% DUI Of Total	Ave. BAC	DUI Involving Drugs	% DUI Involving Drugs
Albany County	877	442	50.40%	0.151	44	5.02%
Albany SO	47	24	51.06%	0.160	2	4.26%
Laramie PD	678	338	49.85%	0.151	29	4.28%
Other	7	3	42.86%	0.160	1	14.29%
UW PD	63	17	26.98%	0.154	3	4.76%
WHP	82	60	73.17%	0.149	9	10.98%

Traffic Crashes

County Department	Traffic Crashes	Alcohol Involved	% Alcohol Involved	Average BAC	Drugs Involved	% Drugs Involved
Albany County	54	48	88.89%	0.147	5	9.26%
Albany SO	1	1	100.00%			
Laramie PD	36	30	83.33%	0.145	5	13.89%
Other	2	2	100.00%	0.160		
UW PD	1	1	100.00%	0.200		
WHP	14	14	100.00%	0.144		

Underage DUI Arrests

County Department	DUI Offenses	Underage Offenses	% DUI Of Total	Ave. BAC	Drugs Involved	% DUI Drugs Inv.
Albany County	442	52	11.76%	0.135	7	1.58%
Albany SO	24	1	4.17%	0.170		
Laramie PD	338	44	13.02%	0.137	5	1.48%
Other	3					
UW PD	17	3	17.65%			
WHP	60	4	6.67%	0.105	2	3.33%

Alcohol and Drug Involvement

Total Offenses

County Department	Total Offenses	Number Involving Alcohol	Percent Involving Alcohol	Number Involving Drugs	Percent Involving Drugs
Albany County	877	734	83.69%	82	9.35%
Albany SO	47	33	70.21%	6	12.77%
Laramie PD	678	584	86.14%	47	6.93%
Other	7	5	71.43%	1	14.29%
UW PD	63	49	77.78%	14	22.22%
WHP	82	63	76.83%	14	17.07%

Domestic Violence

County Department	Domestic Violence Offenses	Number Involving Alcohol	Percent Involving Alcohol	Number Involving Drugs	Percent Involving Drugs
Albany County	46	32	69.57%	0	0.00%
Albany SO	3	1	33.33%		
Laramie PD	39	29	74.36%		
Other	2				
UW PD	1	1	100.00%		
WHP	1	1	100.00%		

Felony Offenses

County Department	Felony Offenses	Number Involving Alcohol	Percent Involving Alcohol	Number Involving Drugs	Percent Involving Drugs
Albany County	39	9	23.08%	5	12.82%
Albany SO	6				
Laramie PD	25	8	32.00%	1	4.00%
Other					
UW PD	1				
WHP	7	1	14.29%	4	57.14%

Resisting Arrest

County Department	Resisting Arrest Offenses	Number Involving Alcohol	Percent Involving Alcohol	Number Involving Drugs	Percent Involving Drugs
Albany County	40	30	75.00%	4	10.00%
Albany SO	1	1	100.00%		
Laramie PD	34	27	79.41%	2	5.88%
Other	2				
UW PD					
WHP	3	2	66.67%	2	66.67%

Misdemeanor Offenses

County Department	Misdemeanor Offenses	Number Involving Alcohol	Percent Involving Alcohol	Number Involving Drugs	Percent Involving Drugs
Albany County	805	700	86.96%	70	8.70%
Albany SO	39	31	79.49%	5	12.82%
Laramie PD	628	556	88.54%	42	6.69%
Other	6	4	66.67%	1	16.67%
UW PD	58	48	82.76%	13	22.41%
WHP	74	61	82.43%	9	12.16%

Assault

County Department	Assault Offenses	Number Involving Alcohol	Percent Involving Alcohol	Number Involving Drugs	Percent Involving Drugs
Albany County	15	10	66.67%	0	0.00%
Albany SO	4	2	50.00%		
Laramie PD	11	8	72.73%		
Other					
UW PD					
WHP					

Location of Alcohol Consumption and Point of Sale by Department

Department	Location of Consumption							Point of Sale					
	Alcohol Involved	Home	Bar	Party	Car	Other	No Response	Home	Bar	Drive Up	Party	Liquor Store	No Response
Albany SO	33	5	15	2	4	18	7	6	15		2	4	7
Laramie PD	584	83	254	46	5		116	43	244		28	31	146
Other	5	1	2		1		1	1	2			1	1
UW PD	49	5	9	18		4	9	3	9		17	2	13
WHP	63	6	18	7	13	8	9	4	20		4	9	13
Albany County													
Totals	734	100	298	73	23	30	142	57	290	0	51	47	180

Location of Alcohol Consumption

Dept.	Bar Name	Number of Reports
Albany SO	3rd Street Cowboy	6
	Buckhorn	4
	Double Shot	1
	Ranger	2
Laramie PD	3rd Street Cowboy	56
	Alibi	2
	Altitudes	2
	Bowling Alley	2
	Buckhorn	53
	Cassidy's	5
	Coppers	3
	Eagles	8
	Elks	1
	Laramie Lanes	2
	Library	3
	Lovejoys	4
	Mingles	11
	Mulligan's	14
	Ranger	18
	Roughed Up Duck	1
Tommy Jack's	2	
Other	Library	1
UW PD	3rd Street Cowboy	4
	Buckhorn	1
	Mulligan's	1
	Ranger	1
WHP	3rd Street Cowboy	2
	Calvaryman	1
	Chili's	1
	Elks	1
	Library	1
	Lovejoys	1
	Mulligan's	1
	Outlaw	1
Trading Post	2	

* Total of percents in Location of Consumption and Point of Sale categories may exceed 100% due to single arrests involving more than one location or point of sale.

Big Horn County Arrests
January 1, 2010 - December 31, 2010

Numbers by Department

County	Total Offenses	Misde-meanor	Felony	Domestic Violence	Resist Arrest	Assault	Public Intox	Alcohol Involved	Drugs Involved	Traffic Crash	Female	Male	Unknown Gender	Average Age
Big Horn County	132	122	10	17	10	17	12	103	19	10	24	103	5	35.55
Basin PD	4	4				2	1	4			1	3	0	25.75
Big Horn SO	51	44	8	10	5	10	1	39	6	3	10	39	2	35.94
Greybull PD	53	51	1	5	4	4	10	43	7	3	7	44	2	34.57
Lovell PD	11	11		1	1	1		9			3	8	0	36.70
Other	2	2						2			1	1	0	41.50
WHP	11	10	1	1				6	6	4	2	8	1	40.00

Percents by Department *

County	Total Offenses	Misde-meanor	Felony	Domestic Violence	Resist Arrest	Assault	Public Intox	Alcohol Involved	Drugs Involved	Traffic Crash	Female	Male	Unkown Gender
Big Horn County	132	92.42%	7.58%	12.88%	7.58%	12.88%	9.09%	78.03%	14.39%	7.58%	18.18%	78.03%	3.79%
Basin PD	4	100.00%	0.00%	0.00%	0.00%	50.00%	25.00%	100.00%	0.00%	0.00%	25.00%	75.00%	0.00%
Big Horn SO	51	86.27%	15.69%	19.61%	9.80%	19.61%	1.96%	76.47%	11.76%	5.88%	19.61%	76.47%	3.92%
Greybull PD	53	96.23%	1.89%	9.43%	7.55%	7.55%	18.87%	81.13%	13.21%	5.66%	13.21%	83.02%	3.77%
Lovell PD	11	100.00%	0.00%	9.09%	9.09%	9.09%	0.00%	81.82%	0.00%	0.00%	27.27%	72.73%	0.00%
Other	2	100.00%	0.00%	0.00%	0.00%	0.00%	0.00%	100.00%	0.00%	0.00%	50.00%	50.00%	0.00%
WHP	11	90.91%	9.09%	9.09%	0.00%	0.00%	0.00%	54.55%	54.55%	36.36%	18.18%	72.73%	9.09%

* Total percents may not equal 100 due to lack of information, or a single arrest involving multiple crimes.

MIP Arrests

County Department	DUI Offenses	MIP Arrests	% MIP to DUI	Average MIP BAC
Big Horn County	72	1	1.39%	0.070
Basin PD	1			
Big Horn SO	29	1	3.45%	0.070
Greybull PD	24			
Lovell PD	7			
Other	2			
WHP	9			

Meth, Drugs & Public Intoxication

County Department	Total Offenses	Meth Involved	Drugs Involved	Public Intox.	Pub. Intox. Ave. BAC
Big Horn County	132	2	19	12	0.236
Basin PD	4			1	
Big Horn SO	51	1	6	1	
Greybull PD	53	1	7	10	0.236
Lovell PD	11				
Other	2				
WHP	11		6		

DUI Arrests

County Department	Total Offenses	DUI Offenses	% DUI Of Total	Ave. BAC	DUI Involving Drugs	% DUI Involving Drugs
Big Horn County	132	72	54.55%	0.180	11	8.33%
Basin PD	4	1	25.00%			
Big Horn SO	51	29	56.86%	0.193	4	7.84%
Greybull PD	53	24	45.28%	0.164	2	3.77%
Lovell PD	11	7	63.64%	0.203		
Other	2	2	100.00%	0.127		
WHP	11	9	81.82%	0.182	5	45.45%

Traffic Crashes

County Department	Traffic Crashes	Alcohol Involved	% Alcohol Involved	Average BAC	Drugs Involved	% Drugs Involved
Big Horn County	10	5	50.00%	0.134	3	30.00%
Basin PD						
Big Horn SO	3	2	66.67%	0.161		
Greybull PD	3	3	100.00%	0.116		0.00%
Lovell PD						
Other						
WHP	4				3	75.00%

Underage DUI Arrests

County Department	DUI Offenses	Underage Offenses	% DUI Of Total	Ave. BAC	Drugs Involved	% DUI Drugs Inv.
Big Horn County	72	4	5.56%	0.085	1	1.39%
Basin PD	1					
Big Horn SO	29	1	3.45%	0.070		
Greybull PD	24	1	4.17%	0.100		
Lovell PD	7	1	14.29%			
Other	2					
WHP	9	1	11.11%		1	11.11%

Alcohol and Drug Involvement

Total Offenses

County Department	Total Offenses	Number Involving Alcohol	Percent Involving Alcohol	Number Involving Drugs	Percent Involving Drugs
Big Horn County	132	103	78.03%	19	14.39%
Basin PD	4	4	100.00%		
Big Horn SO	51	39	76.47%	6	11.76%
Greybull PD	53	43	81.13%	7	13.21%
Lovell PD	11	9	81.82%		
Other	2	2	100.00%		
WHP	11	6	54.55%	6	54.55%

Domestic Violence

County Department	Domestic Violence Offenses	Number Involving Alcohol	Percent Involving Alcohol	Number Involving Drugs	Percent Involving Drugs
Big Horn County	17	8	47.06%	1	5.88%
Basin PD					
Big Horn SO	10	6	60.00%		
Greybull PD	5	2	40.00%	1	20.00%
Lovell PD	1				
Other					
WHP	1				

Felony Offenses

County Department	Felony Offenses	Number Involving Alcohol	Percent Involving Alcohol	Number Involving Drugs	Percent Involving Drugs
Big Horn County	10	6	60.00%	4	40.00%
Basin PD					
Big Horn SO	8	6	75.00%	3	37.50%
Greybull PD	1				
Lovell PD					
Other					
WHP	1			1	100.00%

Resisting Arrest

County Department	Resisting Arrest Offenses	Number Involving Alcohol	Percent Involving Alcohol	Number Involving Drugs	Percent Involving Drugs
Big Horn County	10	5	50.00%	1	10.00%
Basin PD					
Big Horn SO	5	3	60.00%	1	20.00%
Greybull PD	4	2	50.00%		
Lovell PD	1				
Other					
WHP					

Misdemeanor Offenses

County Department	Misdemeanor Offenses	Number Involving Alcohol	Percent Involving Alcohol	Number Involving Drugs	Percent Involving Drugs
Big Horn County	122	97	79.51%	17	13.93%
Basin PD	4	4	100.00%		
Big Horn SO	44	34	77.27%	5	11.36%
Greybull PD	51	42	82.35%	7	13.73%
Lovell PD	11	9	81.82%		
Other	2	2	100.00%		
WHP	10	6	60.00%	5	50.00%

Assault

County Department	Assault Offenses	Number Involving Alcohol	Percent Involving Alcohol	Number Involving Drugs	Percent Involving Drugs
Big Horn County	17	12	70.59%	1	5.88%
Basin PD	2	2	100.00%		
Big Horn SO	10	6	60.00%	1	10.00%
Greybull PD	4	3	75.00%		
Lovell PD	1	1	100.00%		
Other					
WHP					

Location of Alcohol Consumption and Point of Sale by Department

Department	Alcohol Involved	Location of Consumption						Point of Sale					
		Home	Bar	Party	Car	Other	No Response	Home	Bar	Drive Up	Party	Liquor Store	No Response
Basin PD	4	1	2		1				2			1	1
Big Horn SO	39	4	13		6	6	5	4	14				5
Greybull PD	43	12	15		3	2	4	7	15			4	7
Lovell PD	9	4	2		2		2	3				1	3
Other	2					1					1		
WHP	6	1	2	1					2	1	1		
Big Horn County													
Totals	103	22	34	1	12	9	11	14	33	1	2	6	16

Location of Alcohol Consumption

Dept.	Bar Name	Number of Reports
Basin PD	Stockman's	2
Big Horn PD	Branding Iron	1
	Byron Bar	2
	Manderson	1
	Oasis Bar	1
	Shoshoni Bar	3
	Stockman's	2
	Stockman's	2
Greybull PD	Lisa's	1
	Silver Spur	5
	Smokehouse	8
	Stockman's	
WHP	Diamond J	1
	Stockman's	1

* Total of percents in Location of Consumption and Point of Sale categories may exceed 100% due to single arrests involving more than one location or point of sale.

Campbell County Arrests
January 1, 2010 - December 31, 2010

Numbers by Department

County	Total Offenses	Misde-meanor	Felony	Domestic Violence	Resist Arrest	Assault	Public Intox	Alcohol Involved	Drugs Involved	Traffic Crash	Female	Male	Unknown Gender	Average Age
Campbell County	1659	1443	128	137	21	65	219	1307	160	66	365	1241	53	33.50
Campbell SO	458	384	48	34	6	12	7	336	65	20	96	352	10	33.24
DCI	5		5						5		1	4	0	34.80
Gillette PD	1022	897	67	103	15	52	208	815	74	39	234	753	35	33.20
Other	6	4	2					5			2	3	1	29.33
WHP	168	158	6			1	4	151	16	7	32	129	7	36.11

Percents by Department *

County	Total Offenses	Misde-meanor	Felony	Domestic Violence	Resist Arrest	Assault	Public Intox	Alcohol Involved	Drugs Involved	Traffic Crash	Female	Male	Unkown Gender
Campbell County	1659	86.98%	7.72%	8.26%	1.27%	3.92%	13.20%	78.78%	9.64%	3.98%	22.00%	74.80%	3.19%
Campbell SO	458	83.84%	10.48%	7.42%	1.31%	2.62%	1.53%	73.36%	14.19%	4.37%	20.96%	76.86%	2.18%
DCI	5	0.00%	100.00%	0.00%	0.00%	0.00%	0.00%	0.00%	100.00%	0.00%	20.00%	80.00%	0.00%
Gillette PD	1022	87.77%	6.56%	10.08%	1.47%	5.09%	20.35%	79.75%	7.24%	3.82%	22.90%	73.68%	3.42%
Other	6	66.67%	33.33%	0.00%	0.00%	0.00%	0.00%	83.33%	0.00%	0.00%	33.33%	50.00%	16.67%
WHP	168	94.05%	3.57%	0.00%	0.00%	0.60%	2.38%	89.88%	9.52%	4.17%	19.05%	76.79%	4.17%

* Total percents may not equal 100 due to lack of information, or a single arrest involving multiple crimes.

MIP Arrests

County Department	DUI Offenses	MIP Arrests	% MIP to DUI	Average MIP BAC
Campbell County	823	5	0.61%	0.157
Campbell SO	283	2	0.71%	
DCI				
Gillette PD	389	1	0.26%	0.240
Other	3			
WHP	148	2	1.35%	0.115

DUI Arrests

County Department	Total Offenses	DUI Offenses	% DUI Of Total	Ave. BAC	DUI Involving Drugs	% DUI Involving Drugs
Campbell County	1659	823	49.61%	0.147	44	2.65%
Campbell SO	458	283	61.79%	0.142	25	5.46%
DCI	5					
Gillette PD	1022	389	38.06%	0.151	12	1.17%
Other	6	3	50.00%	0.200		
WHP	168	148	88.10%	0.145	7	4.17%

Underage DUI Arrests

County Department	DUI Offenses	Underage Offenses	% DUI Of Total	Ave. BAC	Drugs Involved	% DUI Drugs Inv.
Campbell County	823	36	4.37%	0.125	4	0.49%
Campbell SO	283	18	6.36%	0.114	4	1.41%
DCI						
Gillette PD	389	15	3.86%	0.144		
Other	3					
WHP	148	3	2.03%	0.098		

Meth, Drugs & Public Intoxication

County Department	Total Offenses	Meth Involved	Drugs Involved	Public Intox.	Pub. Intox. Ave. BAC
Campbell County	1659	42	160	219	0.228
Campbell SO	458	17	65	7	0.205
DCI	5	3	5		
Gillette PD	1022	20	74	208	0.229
Other	6				
WHP	168	2	16	4	0.216

Traffic Crashes

County Department	Traffic Crashes	Alcohol Involved	% Alcohol Involved	Average BAC	Drugs Involved	% Drugs Involved
Campbell County	66	57	86.36%	0.162	7	10.61%
Campbell SO	20	17	85.00%	0.138	5	25.00%
DCI						
Gillette PD	39	33	84.62%	0.170	2	5.13%
Other						
WHP	7	7	100.00%	0.183		

Alcohol and Drug Involvement

Total Offenses

County Department	Total Offenses	Number Involving Alcohol	Percent Involving Alcohol	Number Involving Drugs	Percent Involving Drugs
Campbell County	1659	1307	78.78%	160	9.64%
Campbell SO	458	336	73.36%	65	14.19%
DCI	5			5	100.00%
Gillette PD	1022	815	79.75%	74	7.24%
Other	6	5	83.33%		
WHP	168	151	89.88%	16	9.52%

Domestic Violence

County Department	Domestic Violence Offenses	Number Involving Alcohol	Percent Involving Alcohol	Number Involving Drugs	Percent Involving Drugs
Campbell County	137	74	54.01%	2	1.46%
Campbell SO	34	17	50.00%	1	2.94%
DCI					
Gillette PD	103	57	55.34%	1	0.97%
Other					
WHP					

Felony Offenses

County Department	Felony Offenses	Number Involving Alcohol	Percent Involving Alcohol	Number Involving Drugs	Percent Involving Drugs
Campbell County	128	41	32.03%	29	22.66%
Campbell SO	48	17	35.42%	8	16.67%
DCI	5			5	100.00%
Gillette PD	67	19	28.36%	14	20.90%
Other	2	1	50.00%		
WHP	6	4	66.67%	2	33.33%

Resisting Arrest

County Department	Resisting Arrest Offenses	Number Involving Alcohol	Percent Involving Alcohol	Number Involving Drugs	Percent Involving Drugs
Campbell County	21	19	90.48%	1	4.76%
Campbell SO	6	5	83.33%	1	16.67%
DCI					
Gillette PD	15	14	93.33%		
Other					
WHP					

Misdemeanor Offenses

County Department	Misdemeanor Offenses	Number Involving Alcohol	Percent Involving Alcohol	Number Involving Drugs	Percent Involving Drugs
Campbell County	1443	1198	83.02%	128	8.87%
Campbell SO	384	300	78.13%	55	14.32%
DCI					
Gillette PD	897	751	83.72%	59	6.58%
Other	4	4	100.00%		
WHP	158	143	90.51%	14	8.86%

Assault

County Department	Assault Offenses	Number Involving Alcohol	Percent Involving Alcohol	Number Involving Drugs	Percent Involving Drugs
Campbell County	65	49	75.38%	3	4.62%
Campbell SO	12	11	91.67%	1	8.33%
DCI					
Gillette PD	52	38	73.08%	2	3.85%
Other					
WHP	1				

Location of Alcohol Consumption and Point of Sale by Department

Department	Location of Consumption							Point of Sale					
	Alcohol Involved	Home	Bar	Party	Car	Other	No Response	Home	Bar	Drive Up	Party	Liquor Store	No Response
Campbell SO	336	72	136	21	15	21	69	49	138	3	19	16	83
DCI													
Gillette PD	815	189	335	31	13	48	175	100	341	3	24	71	205
Other	5						4						4
WHP	151	30	60	4	8	16	28	19	64	5	4	14	29
Campbell County													
Totals	1307	291	531	56	36	85	276	168	543	11	47	101	321

Location of Alcohol Consumption

Dept.	Bar Name	Number of Reports
Campbell SO	Applebee's	1
	Attitudes	4
	Brian's Place	8
	Casa Del Ray	3
	Chop House	1
	Dewey's	2
	East Side	1
	Fireside	7
	Good Times	5
	Hank's Bar	2
	Jack's Liquor	1
	Jake's	25
	Lakeside	1
	Mingles	12
	Montgomery	1
	National 9 Inn	2
	Other Side	5
	Pat's Liquor	1
	Roset Bar	1
	Rusty Nail	6
	Sundance Bar	7
Towers West	3	

Dept.	Bar Name	Number of Reports
Gillette PD	American Legion	
	Applebee's	1
	Attitudes	14
	Bootleggers	1
	Brian's Place	4
	Casa Del Ray	1
	Center Bar	7
	Chop House	3
	East Side	9
	El Michaocano	4
	Fireside	34
	Good Times	15
	Jack's Liquor	4
	Jake's	41
	Lakeside	12
	Mingles	56
	Monkey	1
	Montgomery	14
	National 9 Inn	2
	Other Side	6
	Pat's Liquor	6
Sports Bar	5	
Sundance Bar	36	
Towers West	8	

Dept.	Bar Name	Number of Reports
WHP	Attitudes	1
	Brian's Place	8
	East Side	4
	Fireside	7
	Good Times	2
	Jake's	7
	Lakeside	2
	Mingles	2
	Moose Lodge	3
	Other Side	1
	Roset Bar	3
Sports Bar	4	
Towers West	3	

* Total of percents in Location of Consumption and Point of Sale categories may exceed 100% due to single arrests involving more than one location or point of sale.

Carbon County Arrests
January 1, 2010 - December 31, 2010

Numbers by Department

County	Total Offenses	Misde-meanor	Felony	Domestic Violence	Resist Arrest	Assault	Public Intox	Alcohol Involved	Drugs Involved	Traffic Crash	Female	Male	Unknown Gender	Average Age
Carbon County	567	462	98	18	11	68	13	292	136	22	126	418	23	33.13
Baggs PD	7	7	1			1		5			2	2	3	37.00
Carbon SO	44	36	10		1	7	2	16	6	2	9	35	0	33.93
DCI	3	2	3						3		1	2	0	45.67
Encampment PD	1	1				1							1	54.00
Hanna Marshal's Office	7	5				3		3	1		2	5	0	27.43
Hanna PD	8	6				2		5	1		3	5	0	30.00
Other	11	10	1			1		8	2		1	10	0	34.18
Rawlins PD	349	290	47	17	9	50	10	203	72	13	88	253	8	32.63
Saratoga PD	15	14	1	1	1	2	1	9	3	1	2	12	1	31.53
Sinclair PD	4	4										3	1	40.50
WHP	118	87	35			1		43	48	6	18	91	9	34.01

Percents by Department *

County	Total Offenses	Misde-meanor	Felony	Domestic Violence	Resist Arrest	Assault	Public Intox	Alcohol Involved	Drugs Involved	Traffic Crash	Female	Male	Unkown Gender
Carbon County	567	81.48%	17.28%	3.17%	1.94%	11.99%	2.29%	51.50%	23.99%	3.88%	22.22%	73.72%	4.06%
Baggs PD	7	100.00%	14.29%	0.00%	0.00%	14.29%	0.00%	71.43%	0.00%	0.00%	28.57%	28.57%	42.86%
Carbon SO	44	81.82%	22.73%	0.00%	2.27%	15.91%	4.55%	36.36%	13.64%	4.55%	20.45%	79.55%	0.00%
DCI	3	66.67%	100.00%	0.00%	0.00%	0.00%	0.00%	0.00%	100.00%	0.00%	33.33%	66.67%	0.00%
Encampment PD	1	100.00%	0.00%	0.00%	0.00%	100.00%	0.00%	0.00%	0.00%	0.00%	0.00%	0.00%	100.00%
Hanna Marshal's Office	7	71.43%	0.00%	0.00%	0.00%	42.86%	0.00%	42.86%	14.29%	0.00%	28.57%	71.43%	0.00%
Hanna PD	8	75.00%	0.00%	0.00%	0.00%	25.00%	0.00%	62.50%	12.50%	0.00%	37.50%	62.50%	0.00%
Other	11	90.91%	9.09%	0.00%	0.00%	9.09%	0.00%	72.73%	18.18%	0.00%	9.09%	90.91%	0.00%
Rawlins PD	349	83.09%	13.47%	4.87%	2.58%	14.33%	2.87%	58.17%	20.63%	3.72%	25.21%	72.49%	2.29%
Saratoga PD	15	93.33%	6.67%	6.67%	6.67%	13.33%	6.67%	60.00%	20.00%	6.67%	13.33%	80.00%	6.67%
Sinclair PD	4	100.00%	0.00%	0.00%	0.00%	0.00%	0.00%	0.00%	0.00%	0.00%	0.00%	75.00%	25.00%
WHP	118	73.73%	29.66%	0.00%	0.00%	0.85%	0.00%	36.44%	40.68%	5.08%	15.25%	77.12%	7.63%

* Total percents may not equal 100 due to lack of information, or a single arrest involving multiple crimes.

MIP Arrests

County Department	DUI Offenses	MIP Arrests	% MIP to DUI	Average MIP BAC
Carbon County	193	10	5.18%	0.132
Baggs PD	5			
Carbon SO	10	1	10.00%	
DCI				
Encampment PD				
Hanna Marshal's Office	3			
Hanna PD	5			
Other	2			
Rawlins PD	115	8	6.96%	0.132
Saratoga PD	6	1	16.67%	
Sinclair PD				
WHP	47			

DUI Arrests

County Department	Total Offenses	DUI Offenses	% DUI Of Total	Ave. BAC	DUI Involving Drugs	% DUI Involving Drugs
Carbon County	567	193	34.04%	0.161	30	15.54%
Baggs PD	7	5	71.43%	0.184		
Carbon SO	44	10	22.73%	0.176	1	10.00%
DCI	3					
Encampment PD	1		0.00%			
Hanna Marshal's Office	7	3		0.223	1	33.33%
Hanna PD	8	5	62.50%	0.207	1	20.00%
Other	11	2	18.18%	0.147		
Rawlins PD	349	115	32.95%	0.155	20	17.39%
Saratoga PD	15	6	40.00%	0.163		
Sinclair PD	4		0.00%			
WHP	118	47	39.83%	0.169	7	14.89%

Underage DUI Arrests

County Department	DUI Offenses	Underage Offenses	% DUI Of Total	Ave. BAC	Drugs Involved	% DUI Drugs Inv.
Carbon County	193	10	5.18%	0.153	3	30.00%
Baggs PD	5					
Carbon SO	10					
DCI						
Encampment PD						
Hanna Marshal's Office	3					
Hanna PD	5					
Other	2					
Rawlins PD	115	8	6.96%	0.184	3	37.50%
Saratoga PD	6	1	16.67%	0.070		
Sinclair PD						
WHP	47	1	2.13%	0.047		

Meth, Drugs & Public Intoxication

County Department	Total Offenses	Meth Involved	Drugs Involved	Public Intox.	Pub. Intox. Ave. BAC
Carbon County	449	15	88	13	0.277
Baggs PD	7				
Carbon SO	44	1	6	2	0.221
DCI	3	1	3		
Encampment PD	1				
Hanna Marshal's Office	7		1		
Hanna PD	8		1		
Other	11		2		0.291
Rawlins PD	349	9	72	10	0.291
Saratoga PD	15		3	1	
Sinclair PD	4				
WHP	118	4	48		

Traffic Crashes

County Department	Traffic Crashes	Alcohol Involved	% Alcohol Involved	Average BAC	Drugs Involved	% Drugs Involved
Carbon County	22	15	68.18%	0.148	7	31.82%
Baggs PD						
Carbon SO	2	2	100.00%	0.157	1	50.00%
DCI						
Encampment PD						
Hanna Marshal's Office						
Hanna PD						
Other						
Rawlins PD	13	8	61.54%	0.172	4	30.77%
Saratoga PD	1	1	100.00%			
Sinclair PD						
WHP	6	4	66.67%	0.020	2	33.33%

Alcohol and Drug Involvement

Total Offenses

County Department	Total Offenses	Number Involving Alcohol	Percent Involving Alcohol	Number Involving Drugs	Percent Involving Drugs
Carbon County	567	292	51.50%	136	23.99%
Baggs PD	7	5	71.43%		
Carbon SO	44	16	36.36%	6	13.64%
DCI	3			3	100.00%
Encampment PD	1				
Hanna Marshal's Office	7	3	42.86%	1	14.29%
Hanna PD	8	5	62.50%	1	12.50%
Other	11	8	72.73%	2	18.18%
Rawlins PD	349	203	58.17%	72	20.63%
Saratoga PD	15	9	60.00%	3	20.00%
Sinclair PD	4				
WHP	118	43	36.44%	48	40.68%

Felony Offenses

County Department	Felony Offenses	Number Involving Alcohol	Percent Involving Alcohol	Number Involving Drugs	Percent Involving Drugs
Carbon County	98	17	17.35%	51	52.04%
Baggs PD	1				
Carbon SO	10	2	20.00%	1	10.00%
DCI	3			3	100.00%
Encampment PD					
Hanna Marshal's Office					
Hanna PD					
Other	1				
Rawlins PD	47	14	29.79%	15	31.91%
Saratoga PD	1			1	100.00%
Sinclair PD					
WHP	35	1	2.86%	31	88.57%

Misdemeanor Offenses

County Department	Misdemeanor Offenses	Number Involving Alcohol	Percent Involving Alcohol	Number Involving Drugs	Percent Involving Drugs
Carbon County	462	263	56.93%	90	19.48%
Baggs PD	7	5	71.43%		
Carbon SO	36	15	41.67%	6	16.67%
DCI	2			2	100.00%
Encampment PD	1				
Hanna Marshal's Office	5	2	40.00%		
Hanna PD	6	4	66.67%		
Other	10	8	80.00%	2	20.00%
Rawlins PD	290	180	62.07%	56	19.31%
Saratoga PD	14	9	64.29%	2	14.29%
Sinclair PD	4				
WHP	87	40	45.98%	22	25.29%

Domestic Violence

County Department	Domestic Violence Offenses	Number Involving Alcohol	Percent Involving Alcohol	Number Involving Drugs	Percent Involving Drugs
Carbon County	18	13	72.22%	3	16.67%
Baggs PD					
Carbon SO					
DCI					
Encampment PD					
Hanna Marshal's Office					
Hanna PD					
Other					
Rawlins PD	17	13	76.47%	3	17.65%
Saratoga PD	1				
Sinclair PD					
WHP					

Resisting Arrest

County Department	Resisting Arrest Offenses	Number Involving Alcohol	Percent Involving Alcohol	Number Involving Drugs	Percent Involving Drugs
Carbon County	11	9	81.82%	3	27.27%
Baggs PD					
Carbon SO	1	1	100.00%		
DCI					
Encampment PD					
Hanna Marshal's Office					
Hanna PD					
Other					
Rawlins PD	9	7	77.78%	3	33.33%
Saratoga PD	1	1	100.00%		
Sinclair PD					
WHP					

Assault

County Department	Assault Offenses	Number Involving Alcohol	Percent Involving Alcohol	Number Involving Drugs	Percent Involving Drugs
Carbon County	68	28	41.18%	1	1.47%
Baggs PD	1				
Carbon SO	7	2	28.57%		
DCI					
Encampment PD	1				
Hanna Marshal's Office	3	1	33.33%		
Hanna PD	2	1	50.00%		
Other	1				
Rawlins PD	50	23	46.00%	1	2.00%
Saratoga PD	2	1	50.00%		
Sinclair PD					
WHP	1				

Location of Alcohol Consumption and Point of Sale by Department

Department	Location of Consumption							Point of Sale					
	Alcohol Involved	Home	Bar	Party	Car	Other	No Response	Home	Bar	Drive Up	Party	Liquor Store	No Response
Baggs PD	5			2	1			1				1	
Carbon SO	16	1	3		3	4	2		3		2	4	2
DCI													
Encampment PD													
Hanna Marshal's Office	3	1											
Hanna PD	5	1	2						2				
Other	8					3						3	
Rawlins PD	203	44	85	6	5	7	25	33	72		3	9	37
Saratoga PD	9	2	2					2	2				
Sinclair PD													
WHP	43	6	4	1	5		12		6		1	6	15
Carbon County Totals	292	55	96	9	14	14	39	36	85	0	6	23	54

Location of Alcohol Consumption

Dept.	Bar Name	Number of Reports
Carbon SO	Sloan's	1
Hanna PD	Dingy Dan's	1
	Nugett Bar	1
Rawlins PD	Days Inn	3
	Elks Lodge	2
	Hole in the Wall	16
	Hoot 'n' Howl	1
	Mike's Big City	8
	Office	9
	Peppermill	16
	Rifleman	3
	Sanford's	2
	Sportsman	6
	Wyoming Bar	2
Saratoga PD	Rustic Bar	1
	Whistle Pig	1

Dept.	Bar Name	Number of Reports
WHP	Corner Bar	1
	Hole in the Wall	1
	Peppermill	1
	Whistle Pig	1

* Total of percents in Location of Consumption and Point of Sale categories may exceed 100% due to single arrests involving more than one location or point of sale.

Converse County Arrests
January 1, 2010 - December 31, 2010

Numbers by Department

County	Total Offenses	Misde-meanor	Felony	Domestic Violence	Resist Arrest	Assault	Public Intox	Alcohol Involved	Drugs Involved	Traffic Crash	Female	Male	Unknown Gender	Average Age
Converse County	491	388	51	32	18	29	20	322	95	18	112	369	10	30.97
Converse SO	134	107	22	4	2	8	2	71	36	4	31	99	4	30.38
Douglas PD	236	182	22	19	12	15	16	172	30	7	56	176	4	30.00
Glenrock PD	47	38	2	8	3	5	2	33	2	3	14	33	0	30.70
Other	5	2		1				2			2	3	0	21.00
WHP	69	59	5		1	1		44	27	4	9	58	2	35.87

Percents by Department *

County	Total Offenses	Misde-meanor	Felony	Domestic Violence	Resist Arrest	Assault	Public Intox	Alcohol Involved	Drugs Involved	Traffic Crash	Female	Male	Unkown Gender
Converse County	491	79.02%	10.39%	6.52%	3.67%	5.91%	4.07%	65.58%	19.35%	3.67%	22.81%	75.15%	2.04%
Converse SO	134	79.85%	16.42%	2.99%	1.49%	5.97%	1.49%	52.99%	26.87%	2.99%	23.13%	73.88%	2.99%
Douglas PD	236	77.12%	9.32%	8.05%	5.08%	6.36%	6.78%	72.88%	12.71%	2.97%	23.73%	74.58%	1.69%
Glenrock PD	47	80.85%	4.26%	17.02%	6.38%	10.64%	4.26%	70.21%	4.26%	6.38%	29.79%	70.21%	0.00%
Other	5	40.00%	0.00%	20.00%	0.00%	0.00%	0.00%	40.00%	0.00%	0.00%	40.00%	60.00%	0.00%
WHP	69	85.51%	7.25%	0.00%	1.45%	1.45%	0.00%	63.77%	39.13%	5.80%	13.04%	84.06%	2.90%

* Total percents may not equal 100 due to lack of information, or a single arrest involving multiple crimes.

MIP Arrests

County Department	DUI Offenses	MIP Arrests	% MIP to DUI	Average MIP BAC
Converse County	173	50	28.90%	0.073
Converse SO	45	11	0.23%	0.103
Douglas PD	71	28	0.09%	0.062
Glenrock PD	7	7	1.42%	0.100
Other	1	1	1.00%	0.010
WHP	49	3	0.12%	0.057

DUI Arrests

County Department	Total Offenses	DUI Offenses	% DUI Of Total	Ave. BAC	DUI Involving Drugs	% DUI Involving Drugs
Converse County	491	173	35.23%	0.155	27	15.61%
Converse SO	134	45	33.58%	0.144	4	8.89%
Douglas PD	236	71	30.08%	0.158	7	9.86%
Glenrock PD	47	7	14.89%	0.187		
Other	5	1	20.00%	0.140		
WHP	69	49	71.01%	0.158	16	32.65%

Underage DUI Arrests

County Department	DUI Offenses	Underage Offenses	% DUI Of Total	Ave. BAC	Drugs Involved	% DUI Drugs Inv.
Converse County	173	13	7.51%	0.105	5	38.46%
Converse SO	45	5	11.11%	0.080	1	20.00%
Douglas PD	71	3	4.23%	0.148		
Glenrock PD	7					
Other	1					
WHP	49	5	10.20%		4	80.00%

Meth, Drugs & Public Intoxication

County Department	Total Offenses	Meth Involved	Drugs Involved	Public Intox.	Pub. Intox. Ave. BAC
Converse County	491	18	95	20	0.197
Converse SO	134	7	36	2	0.267
Douglas PD	236	1	30	16	0.195
Glenrock PD	47	1	2	2	0.171
Other	5				
WHP	69	9	27		

Traffic Crashes

County Department	Traffic Crashes	Alcohol Involved	% Alcohol Involved	Average BAC	Drugs Involved	% Drugs Involved
Converse County	18	16	88.89%	0.181	2	11.11%
Converse SO	4	3	75.00%	0.165	1	25.00%
Douglas PD	7	7	100.00%	0.148	1	14.29%
Glenrock PD	3	3	100.00%	0.255		
Other						
WHP	4	3	75.00%	0.185		

Alcohol and Drug Involvement

Total Offenses

County Department	Total Offenses	Number Involving Alcohol	Percent Involving Alcohol	Number Involving Drugs	Percent Involving Drugs
Converse County	491	322	65.58%		0.00%
Converse SO	134	71	52.99%		0.00%
Douglas PD	236	172	72.88%		0.00%
Glenrock PD	47	33	70.21%		0.00%
Other	5	2	40.00%		0.00%
WHP	69	44	63.77%		0.00%

Domestic Violence

County Department	Domestic Violence Offenses	Number Involving Alcohol	Percent Involving Alcohol	Number Involving Drugs	Percent Involving Drugs
Converse County	32	22	68.75%	1	3.13%
Converse SO	4	2	50.00%		
Douglas PD	19	15	78.95%	1	5.26%
Glenrock PD	8	5	62.50%		
Other	1				
WHP					

Felony Offenses

County Department	Felony Offenses	Number Involving Alcohol	Percent Involving Alcohol	Number Involving Drugs	Percent Involving Drugs
Converse County	51	9	17.65%	18	35.29%
Converse SO	22	1	4.55%	13	59.09%
Douglas PD	22	6	27.27%	1	4.55%
Glenrock PD	2	1	50.00%		
Other					
WHP	5	1	20.00%	4	80.00%

Resisting Arrest

County Department	Resisting Arrest Offenses	Number Involving Alcohol	Percent Involving Alcohol	Number Involving Drugs	Percent Involving Drugs
Converse County	18	14	77.78%	0	0.00%
Converse SO	2	2	100.00%		
Douglas PD	12	10	83.33%		
Glenrock PD	3	1	33.33%		
Other					
WHP	1	1	100.00%		

Misdemeanor Offenses

County Department	Misdemeanor Offenses	Number Involving Alcohol	Percent Involving Alcohol	Number Involving Drugs	Percent Involving Drugs
Converse County	388	279	71.91%	68	17.53%
Converse SO	107	70	65.42%	21	19.63%
Douglas PD	182	142	78.02%	23	12.64%
Glenrock PD	38	27	71.05%	2	5.26%
Other	2	1	50.00%		
WHP	59	39	66.10%	22	37.29%

Assault

County Department	Assault Offenses	Number Involving Alcohol	Percent Involving Alcohol	Number Involving Drugs	Percent Involving Drugs
Converse County	29	20	68.97%	0	0.00%
Converse SO	8	5	62.50%		
Douglas PD	15	9	60.00%		
Glenrock PD	5	5	100.00%		
Other					
WHP	1	1	100.00%		

Location of Alcohol Consumption and Point of Sale by Department

Department	Location of Consumption							Point of Sale					
	Alcohol Involved	Home	Bar	Party	Car	Other	No Response	Home	Bar	Drive Up	Party	Liquor Store	No Response
Converse SO	71	29	16	4	7	2	9	13	24		2	3	23
Douglas PD	172	42	67	11	11	9	21	16	59		3	12	41
Glenrock PD	33	13	10	4			3		13	1	1		11
Other	2	1	1					1	1				
WHP	44	1	12	2	19	3	4		12	2	1	7	8
Converse County Totals	322	86	106	21	37	14	37	30	109	3	7	22	83

Location of Alcohol Consumption

Dept.	Bar Name	Number of Reports
Converse SO	4 Aces	2
	North Gate	2
	Shoreliner	1
	Waterhole	3
Douglas PD	4 Aces	2
	Best Western	2
	Chutes	4
	College Inn	7
	Douglas Liquor	6

Dept.	Bar Name	Number of Reports
Douglas PD	Legion	1
	North Gate	5
	Tiny Tavern	1
	Waterhole	33
Glenrock	4 Aces	5
	El Jarro	1
	Shoreliner	1
WHP	College Inn	1
	Port Diablo	1
	Sandbar	1
	Waterhole	1
	Wonder Bar	1

* Total of percents in Location of Consumption and Point of Sale categories may exceed 100% due to single arrests involving more than one location or point of sale.

Crook County Arrests
January 1, 2010 - December 31, 2010

Numbers by Department

County	Total Offenses	Misde-meanor	Felony	Domestic Violence	Resist Arrest	Assault	Public Intox	Alcohol Involved	Drugs Involved	Traffic Crash	Female	Male	Unknown Gender	Average Age
Crook County	83	74	3	9	7	12	3	79	5	5	7	75	1	37.99
Crook SO	18	17		4		6		17	3	1	2	16	0	43.56
Game & Fish	2	2				2		2				2	0	28.50
Hulett PD	5	3	2	2	2			4				5	0	35.00
Moorcroft PD	3	2		2		2		2				3	0	42.00
Other	7	6			1		1	7				7	0	35.29
State Parks	16	16			2		1	16	1			15	1	35.13
Sundance PD	4	3	1	1	1			3		1	1	3	0	29.50
WHP	28	25			1	2	1	28	1	3	4	24	0	38.77

Percents by Department *

County	Total Offenses	Misde-meanor	Felony	Domestic Violence	Resist Arrest	Assault	Public Intox	Alcohol Involved	Drugs Involved	Traffic Crash	Female	Male	Unkown Gender
Crook County	83	89.16%	3.61%	10.84%	8.43%	14.46%	3.61%	95.18%	6.02%	6.02%	8.43%	90.36%	1.20%
Crook SO	18	94.44%	0.00%	22.22%	0.00%	33.33%	0.00%	94.44%	16.67%	5.56%	11.11%	88.89%	0.00%
Game & Fish	2	100.00%	0.00%	0.00%	0.00%	100.00%	0.00%	100.00%	0.00%	0.00%	0.00%	100.00%	0.00%
Hulett PD	5	60.00%	40.00%	40.00%	40.00%	0.00%	0.00%	80.00%	0.00%	0.00%	0.00%	100.00%	0.00%
Moorcroft PD	3	66.67%	0.00%	66.67%	0.00%	66.67%	0.00%	66.67%	0.00%	0.00%	0.00%	100.00%	0.00%
Other	7	85.71%	0.00%	0.00%	14.29%	0.00%	14.29%	100.00%	0.00%	0.00%	0.00%	100.00%	0.00%
State Parks	16	100.00%	0.00%	0.00%	12.50%	0.00%	6.25%	100.00%	6.25%	0.00%	0.00%	93.75%	6.25%
Sundance PD	4	75.00%	25.00%	25.00%	25.00%	0.00%	0.00%	75.00%	0.00%	25.00%	25.00%	75.00%	0.00%
WHP	28	89.29%	0.00%	0.00%	3.57%	7.14%	3.57%	100.00%	3.57%	10.71%	14.29%	85.71%	0.00%

* Total percents may not equal 100 due to lack of information, or a single arrest involving multiple crimes.

MIP Arrests

County Department	DUI Offenses	MIP Arrests	% MIP to DUI	Average MIP BAC
Crook County	64	2	3.13%	No rpt.
Crook SO	14			
Game & Fish	1			
Hulett PD				
Moorcroft PD	1			
Other	6	1	16.67%	
State Parks	15	1	6.67%	
Sundance PD	1			
WHP	26			

Meth, Drugs & Public Intoxication

County Department	Total Offenses	Meth Involved	Drugs Involved	Public Intox.	Pub. Intox. Ave. BAC
Crook County	83	0	5	3	No rpt.
Crook SO	18		3		
Game & Fish	2				
Hulett PD	5				
Moorcroft PD	3				
Other	7			1	
State Parks	16		1	1	
Sundance PD	4				
WHP	28		1	1	

DUI Arrests

County Department	Total Offenses	DUI Offenses	% DUI Of Total	Ave. BAC	DUI Involving Drugs	% DUI Involving Drugs
Crook County	83	64	77.11%	0.129	5	6.02%
Crook SO	18	14	77.78%	0.184	3	16.67%
Game & Fish	2	1		0.149		
Hulett PD	5					
Moorcroft PD	3	1	33.33%			
Other	7	6	85.71%	0.086		
State Parks	16	15	93.75%	0.107	1	6.25%
Sundance PD	4	1	25.00%	0.160		
WHP	28	26	92.86%	0.120	1	3.57%

Traffic Crashes

County Department	Traffic Crashes	Alcohol Involved	% Alcohol Involved	Average BAC	Drugs Involved	% Drugs Involved
Crook County	5	5	100.00%	0.189	1	20.00%
Crook SO	1	1	100.00%	0.210	1	100.00%
Game & Fish						
Hulett PD						
Moorcroft PD						
Other						
State Parks						
Sundance PD	1	1	100.00%			
WHP	3	3	100.00%	0.167		

Underage DUI Arrests

County Department	DUI Offenses	Underage Offenses	% DUI Of Total	Ave. BAC	Drugs Involved	% DUI Drugs Inv.
Crook County	64	3	4.69%	No rpt.	1	1.56%
Crook SO	14	1	7.14%		1	7.14%
Game & Fish	1					
Hulett PD						
Moorcroft PD	1					
Other	6	1	16.67%			
State Parks	15	1	6.67%			
Sundance PD	1					
WHP	26					

Alcohol and Drug Involvement

Total Offenses

County Department	Total Offenses	Number Involving Alcohol	Percent Involving Alcohol	Number Involving Drugs	Percent Involving Drugs
Crook County	83	79	95.18%	5	6.02%
Crook SO	18	17	94.44%	3	16.67%
Game & Fish	2	2	100.00%		
Hulett PD	5	4	80.00%		
Moorcroft PD	3	2	66.67%		
Other	7	7	100.00%		
State Parks	16	16	100.00%	1	6.25%
Sundance PD	4	3	75.00%		
WHP	28	28	100.00%	1	3.57%

Domestic Violence

County Department	Domestic Violence Offenses	Number Involving Alcohol	Percent Involving Alcohol	Number Involving Drugs	Percent Involving Drugs
Crook County	9	7	77.78%	0	
Crook SO	4	4	100.00%		
Game & Fish					
Hulett PD	2	1	50.00%		
Moorcroft PD	2	1	50.00%		
Other					
State Parks					
Sundance PD	1	1	100.00%		
WHP					

Felony Offenses

County Department	Felony Offenses	Number Involving Alcohol	Percent Involving Alcohol	Number Involving Drugs	Percent Involving Drugs
Crook County	3	2	66.67%	0	
Crook SO					
Game & Fish					
Hulett PD	2	1	50.00%		
Moorcroft PD					
Other					
State Parks					
Sundance PD	1	1	100.00%		
WHP					

Resisting Arrest

County Department	Resisting Arrest Offenses	Number Involving Alcohol	Percent Involving Alcohol	Number Involving Drugs	Percent Involving Drugs
Crook County	7	7	100.00%	0	
Crook SO					
Game & Fish					
Hulett PD	2	2	100.00%		
Moorcroft PD					
Other	1	1	100.00%		
State Parks	2	2	100.00%		
Sundance PD	1	1	100.00%		
WHP	1	1	100.00%		

Misdemeanor Offenses

County Department	Misdemeanor Offenses	Number Involving Alcohol	Percent Involving Alcohol	Number Involving Drugs	Percent Involving Drugs
Crook County	74	71	95.95%	5	6.76%
Crook SO	17	16	94.12%	3	17.65%
Game & Fish	2	2	100.00%		
Hulett PD	3	3	100.00%		
Moorcroft PD	2	1	50.00%		
Other	6	6	100.00%		
State Parks	16	16	100.00%	1	6.25%
Sundance PD	3	2	66.67%		
WHP	25	25	100.00%	1	4.00%

Assault

County Department	Assault Offenses	Number Involving Alcohol	Percent Involving Alcohol	Number Involving Drugs	Percent Involving Drugs
Crook County	6	4	66.67%	0	
Crook SO	2	2	100.00%		
Game & Fish					
Hulett PD	2	1	50.00%		
Moorcroft PD					
Other					
State Parks					
Sundance PD	2	1	50.00%		
WHP					

Location of Alcohol Consumption and Point of Sale by Department

Department	Alcohol Involved	Location of Consumption						Point of Sale					
		Home	Bar	Party	Car	Other	No Response	Home	Bar	Drive Up	Party	Liquor Store	No Response
Crook SO	17	4	9		2		2	2	10				5
Game & Fish	2											1	1
Hulett PD	4	1	3				1		3				2
Moorcroft PD	2		1						1				
Other	7				1		1		1			1	
State Parks	16				2		1					6	7
Sundance PD	3		1				2		1				2
WHP	28	2	11		5		5	3	12	1		5	5
Crook County Totals	79	7	25	0	10	0	12	5	28	1	0	13	22

Location of Alcohol Consumption

Dept.	Bar Name	Number of Reports
Crook SO	Anchor	1
	Beulah Bar	1
	Dewey's	1
	Hopper's Bar	1
	Jake's	1
	Trading Post	2
	Turf	1
Moorcroft PD	Dewey's	1
Sundance PD	Dime Bar	1
WHP	Anchor	2
	Beulah Bar	2
	Brian's Bar	1
	Saloon 333	1
	Trading Post	1
	Turf	1
	VFW	1

* Total of percents in Location of Consumption and Point of Sale categories may exceed 100% due to single arrests involving more than one location or point of sale.

**Fremont County Alcohol Crisis Center Arrests
January 1, 2010 - December 31, 2010**

Numbers by Department

County	Total Offenses	Misde-meanor	Felony	Domestic Violence	Resist Arrest	Assault	Public Intox	Alcohol Involved	Drugs Involved	Traffic Crash	Female	Male	Unknown Gender	Average Age
Fremont Co. Alcohol Crisis Ctr.	2593	1592	1	5	0	1	1620	2453	8	3	456	2084	53	40.43
Court	10										2	8	0	28.00
ER	115	3					3	110	2	1	31	79	5	39.99
Fremont SO	78	78		1			76	76	2		22	55	1	34.88
No. Chey. Recovery	4										1	3	0	41.50
Other	76	6					6	28			23	52	1	38.03
Riverton PD	1181	1137		2			1159	1172	1	2	201	958	22	40.93
Self/Family/Friend	768	26	1	1		1	23	709	2		95	658	15	42.35
WHP	6	6					6	6			2	4	0	51.17
WRPD	355	336		1			347	352	1		79	267	9	36.64

Percents by Department *

County	Total Offenses	Misde-meanor	Felony	Domestic Violence	Resist Arrest	Assault	Public Intox	Alcohol Involved	Drugs Involved	Traffic Crash	Female	Male	Unkown Gender
Fremont Co. Alcohol Crisis Ctr.	2593	61.40%	0.04%	0.19%	0.00%	0.04%	62.48%	94.60%	0.31%	0.12%	17.59%	80.37%	2.04%
Court	10	0.00%	0.00%	0.00%	0.00%	0.00%	0.00%	0.00%	0.00%	0.00%	20.00%	80.00%	0.00%
ER	115	2.61%	0.00%	0.00%	0.00%	0.00%	2.61%	95.65%	1.74%	0.87%	26.96%	68.70%	4.35%
Fremont SO	78	100.00%	0.00%	1.28%	0.00%	0.00%	97.44%	97.44%	2.56%	0.00%	28.21%	70.51%	1.28%
No. Chey. Recovery	4	0.00%	0.00%	0.00%	0.00%	0.00%	0.00%	0.00%	0.00%	0.00%	25.00%	75.00%	0.00%
Other	76	7.89%	0.00%	0.00%	0.00%	0.00%	7.89%	36.84%	0.00%	0.00%	30.26%	68.42%	1.32%
Riverton PD	1181	96.27%	0.00%	0.17%	0.00%	0.00%	98.14%	99.24%	0.08%	0.17%	17.02%	81.12%	1.86%
Self/Family/Friend	768	3.39%	0.13%	0.13%	0.00%	0.13%	2.99%	92.32%	0.26%	0.00%	12.37%	85.68%	1.95%
WHP	6	100.00%	0.00%	0.00%	0.00%	0.00%	100.00%	100.00%	0.00%	0.00%	33.33%	66.67%	0.00%
WRPD	355	94.65%	0.00%	0.28%	0.00%	0.00%	97.75%	99.15%	0.28%	0.00%	22.25%	75.21%	2.54%

* Total percents may not equal 100 due to lack of information, or a single arrest involving multiple crimes.

MIP Arrests

County Department	DUI Offenses	MIP Arrests	% MIP to DUI	Average MIP BAC
FCACC	1	0		
Court				
ER				
Fremont SO	1			
No. Chey. Recovery				
Other				
Riverton PD				
Self/Family/Friend				
WHP				
WRPD				

Meth, Drugs & Public Intoxication

County Department	Total Offenses	Meth Involved	Drugs Involved	Public Intox.	Pub. Intox. Ave. BAC
FCACC	2593	1	8	1620	0.237
Court	10				
ER	115	1	2	3	0.233
Fremont SO	78		2	76	0.204
No. Chey. Recovery	4				
Other	76			6	0.197
Riverton PD	1181		1	1159	0.240
Self/Family/Friend	768		2	23	0.228
WHP	6			6	0.182
WRPD	355		1	347	0.235

DUI Arrests

County Department	Total Offenses	DUI Offenses	% DUI Of Total	Ave. BAC	DUI Involving Drugs	% DUI Involving Drugs
FCACC	2593	1	0.04%	No rpt.	1	0.00%
Court	10					
ER	115					
Fremont SO	78	1	1.28%		1	0.00%
No. Chey. Recovery	4					
Other	76					
Riverton PD	1181					
Self/Family/Friend	768					
WHP	6					
WRPD	355					

Traffic Crashes

County Department	Traffic Crashes	Alcohol Involved	% Alcohol Involved	Average BAC	Drugs Involved	% Drugs Involved
FCACC	3	3	100.00%	0.200	1	0.00%
Court						
ER	1	1	100.00%	0.040	1	0.00%
Fremont SO						
No. Chey. Recovery						
Other						
Riverton PD	2	2	100.00%	0.280		
Self/Family/Friend						
WHP						
WRPD						

Underage DUI Arrests

County Department	DUI Offenses	Underage Offenses	% DUI Of Total	Ave. BAC	Drugs Involved	% DUI Drugs Inv.
FCACC	1	0				
Court						
ER						
Fremont SO	1					
No. Chey. Recovery						
Other						
Riverton PD						
Self/Family/Friend						
WHP						
WRPD						

Alcohol and Drug Involvement

Total Offenses

County Department	Total Offenses	Number Involving Alcohol	Percent Involving Alcohol	Number Involving Drugs	Percent Involving Drugs
FCACC	2593	2453	94.60%	8	0.31%
Court	10				0.00%
ER	115	110	95.65%	2	1.74%
Fremont SO	78	76	97.44%	2	
No. Chey. Recovery	4				
Other	76	28	36.84%		
Riverton PD	1181	1172	99.24%	1	0.08%
Self/Family/Friend	768	709	92.32%	2	0.26%
WHP	6	6	100.00%		
WRPD	355	352	99.15%	1	0.28%

Domestic Violence

County Department	Domestic Violence Offenses	Number Involving Alcohol	Percent Involving Alcohol	Number Involving Drugs	Percent Involving Drugs
FCACC	5	5	100.00%	0	0.00%
Court					
ER					
Fremont SO	1	1	100.00%		
No. Chey. Recovery					
Other					
Riverton PD	2	2	100.00%		
Self/Family/Friend	1	1			
WHP					
WRPD	1	1	100.00%		

Felony Offenses

County Department	Felony Offenses	Number Involving Alcohol	Percent Involving Alcohol	Number Involving Drugs	Percent Involving Drugs
FCACC	1	1	100.00%	0	0.00%
Court					
ER					
Fremont SO					
No. Chey. Recovery					
Other					
Riverton PD					
Self/Family/Friend	1		0.00%		
WHP					
WRPD					

Resisting Arrest

County Department	Resisting Arrest Offenses	Number Involving Alcohol	Percent Involving Alcohol	Number Involving Drugs	Percent Involving Drugs
FCACC	0				
Court					
ER					
Fremont SO					
No. Chey. Recovery					
Other					
Riverton PD					
Self/Family/Friend					
WHP					
WRPD					

Misdemeanor Offenses

County Department	Misdemeanor Offenses	Number Involving Alcohol	Percent Involving Alcohol	Number Involving Drugs	Percent Involving Drugs
FCACC	1592	1587	99.69%	3	0.19%
Court					
ER	3	3	100.00%		
Fremont SO	78	76	97.44%	2	2.56%
No. Chey. Recovery					
Other	6	6	100.00%		
Riverton PD	1137	1136	99.91%		
Self/Family/Friend	26	25	96.15%		
WHP	6	6	100.00%		
WRPD	336	335	99.70%	1	0.30%

Assault

County Department	Assault Offenses	Number Involving Alcohol	Percent Involving Alcohol	Number Involving Drugs	Percent Involving Drugs
FCACC	1	1	100.00%	0	
Court					
ER					
Fremont SO					
No. Chey. Recovery					
Other					
Riverton PD					
Self/Family/Friend	1	1	100.00%		
WHP					
WRPD					

Location of Alcohol Consumption and Point of Sale by Department

Department	Alcohol Involved	Location of Consumption						Point of Sale					
		Home	Bar	Party	Car	Other	No Response	Home	Bar	Drive Up	Party	Liquor Store	No Response
Court													
ER	110	22	2	3		30	51	4	3			45	52
Fremont SO	76	21	4	4		13	32	6	5			27	33
No. Chey. Recovery													
Other	28	4	2	1	1	13	5	1	2		1	17	6
Riverton PD	1172	49	74	42	8	541	458	8	70		6	578	487
Self/Family/Friend	709	49	32	21	12	336	255	12	40		8	370	261
WHP	6				3	1	2					1	5
WRPD	352	109	5	11	4	88	134	21	6		8	150	149
FCACC Totals	2453	254	119	82	28	1022	937	52	126	0	23	1188	993

Location of Alcohol Consumption

Dept.	Bar Name	Number of Reports
ER	Maverick	1
	Ralph's	1
Fremont SO	Boot	1
	Cedar	1
	River City	1
	Time Out	1
Other	Silver Sage	1
	Riverton PD	
Riverton PD	Beaver Creek	1
	Bomber's	18
	Boot	3
	Cedar	3
	Holiday Inn	2
	Livestock	5
	Maverick	3
	Ralph's	2
	Red Eagle	6
	River City	6
	Time Out	7
	Tomahawk	2
	Self/Family/ Friend	Bomber's
Cedar		1
Livestock		5
Maverick		2
Ralph's		4
River City		5
WRPD	Rocky Mtn. Liquor	2
	Beaver Creek	1
	Ralph's	1
	Rez Ride	1
	River City	1

* Total of percents in Location of Consumption and Point of Sale categories may exceed 100% due to single arrests involving more than on location or point of sale.

Fremont County Arrests
January 1, 2010 - December 31, 2010

Numbers by Department

County	Total Offenses	Misde-meanor	Felony	Domestic Violence	Resist Arrest	Assault	Public Intox	Alcohol Involved	Drugs Involved	Traffic Crash	Female	Male	Unknown Gender	Average Age
Fremont County	2294	1806	92	74	101	81	795	1881	97	60	558	1669	67	34.13
Fremont SO	395	340	32	26	7	15	30	249	30	22	90	288	17	31.94
Lander PD	461	379	15	13	21	14	85	312	13	12	117	335	9	32.61
Other	259	40	13		5	7	21	196	6		45	206	8	38.91
Riverton PD	827	731	15	32	58	23	436	814	36	20	202	595	30	35.10
Shoshoni PD	13	8	2			1	1	9		1		13	0	41.00
WHP	66	55	5			1	3	43	3	3	19	46	1	31.85
WRPD	273	253	10	3	10	20	219	258	9	2	85	186	2	31.97

Fremont County Arrests
October 1, 2007 - September 30, 2008

Percents by Department *

County	Total Offenses	Misde-meanor	Felony	Domestic Violence	Resist Arrest	Assault	Public Intox	Alcohol Involved	Drugs Involved	Traffic Crash	Female	Male	Unkown Gender
Fremont County	2294	78.73%	4.01%	3.23%	4.40%	3.53%	34.66%	82.00%	4.23%	2.62%	24.32%	72.76%	2.92%
Fremont SO	395	86.08%	8.10%	6.58%	1.77%	3.80%	7.59%	63.04%	7.59%	5.57%	22.78%	72.91%	4.30%
Lander PD	461	82.21%	3.25%	2.82%	4.56%	3.04%	18.44%	67.68%	2.82%	2.60%	25.38%	72.67%	1.95%
Other	259	15.44%	5.02%	0.00%	1.93%	2.70%	8.11%	75.68%	2.32%	0.00%	17.37%	79.54%	3.09%
Riverton PD	827	88.39%	1.81%	3.87%	7.01%	2.78%	52.72%	98.43%	4.35%	2.42%	24.43%	71.95%	3.63%
Shoshoni PD	13	61.54%	15.38%	0.00%	0.00%	7.69%	7.69%	69.23%	0.00%	7.69%	0.00%	100.00%	0.00%
WHP	66	83.33%	7.58%	0.00%	0.00%	1.52%	4.55%	65.15%	4.55%	4.55%	28.79%	69.70%	1.52%
WRPD	273	92.67%	3.66%	1.10%	3.66%	7.33%	80.22%	94.51%	3.30%	0.73%	31.14%	68.13%	0.73%

* Total percents may not equal 100 due to lack of information, or a single arrest involving multiple crimes.

MIP Arrests

County Department	DUI Offenses	MIP Arrests	% MIP to DUI	Average MIP BAC
Fremont County	453	4	0.88%	0.078
Fremont SO	100			
Lander PD	151	3	1.99%	0.070
Other	1			
Riverton PD	152	1	0.66%	0.103
Shoshoni PD	5			
WHP	35			
WRPD	9			

Meth, Drugs & Public Intoxication

County Department	Total Offenses	Meth Involved	Drugs Involved	Public Intox.	Pub. Intox. Ave. BAC
Fremont County	2294	14	97	795	0.243
Fremont SO	395	7	30	30	0.228
Lander PD	461	2	13	85	0.238
Other	259	4	6	21	0.157
Riverton PD	827	1	36	436	0.258
Shoshoni PD	13			1	0.210
WHP	66		3	3	0.191
WRPD	273		9	219	0.225

DUI Arrests

County Department	Total Offenses	DUI Offenses	% DUI Of Total	Ave. BAC	DUI Involving Drugs	% DUI Involving Drugs
Fremont County	2294	453	19.75%	0.160	23	5.08%
Fremont SO	395	100	25.32%	0.151	5	5.00%
Lander PD	461	151	32.75%	0.150	5	3.31%
Other	259	1	0.39%	0.320		
Riverton PD	827	152	18.38%	0.173	7	4.61%
Shoshoni PD	13	5	38.46%	0.178		
WHP	66	35	53.03%	0.165	3	8.57%
WRPD	273	9	3.30%	0.133	3	33.33%

Traffic Crashes

County Department	Traffic Crashes	Alcohol Involved	% Alcohol Involved	Average BAC	Drugs Involved	% Drugs Involved
Fremont County	60	53	88.33%	0.178	7	11.67%
Fremont SO	22	21	95.45%	0.180	2	9.09%
Lander PD	12	8	66.67%	0.154	1	8.33%
Other						
Riverton PD	20	18	90.00%	0.188	4	20.00%
Shoshoni PD	1	1	100.00%	0.148		
WHP	3	3	100.00%	0.190		
WRPD	2	2	100.00%	0.210		

Underage DUI Arrests

County Department	DUI Offenses	Underage Offenses	% DUI Of Total	Ave. BAC	Drugs Involved	% DUI Drugs Inv.
Fremont County	453	37	8.17%	0.110	6	16.22%
Fremont SO	100	6	6.00%	0.154		
Lander PD	151	16	10.60%	0.095	1	6.25%
Other	1					
Riverton PD	152	6	3.95%	0.098	1	16.67%
Shoshoni PD	5					
WHP	35	1	2.86%	0.073	1	100.00%
WRPD	9	8	88.89%	0.127	3	37.50%

Alcohol and Drug Involvement

Total Offenses

County Department	Total Offenses	Number Involving Alcohol	Percent Involving Alcohol	Number Involving Drugs	Percent Involving Drugs
Fremont County	2294	1881	82.00%	97	4.23%
Fremont SO	395	249	63.04%	30	7.59%
Lander PD	461	312	67.68%	13	2.82%
Other	259	196	75.68%	6	2.32%
Riverton PD	827	814	98.43%	36	4.35%
Shoshoni PD	13	9	69.23%		0.00%
WHP	66	43	65.15%	3	4.55%
WRPD	273	258	94.51%	9	3.30%

Domestic Violence

County Department	Domestic Violence Offenses	Number Involving Alcohol	Percent Involving Alcohol	Number Involving Drugs	Percent Involving Drugs
Fremont County	74	56	75.68%	5	6.76%
Fremont SO	26	17	65.38%	3	11.54%
Lander PD	13	6	46.15%		
Other					
Riverton PD	32	32	100.00%		
Shoshoni PD					
WHP					
WRPD	3	1	33.33%	2	66.67%

Felony Offenses

County Department	Felony Offenses	Number Involving Alcohol	Percent Involving Alcohol	Number Involving Drugs	Percent Involving Drugs
Fremont County	92	35	38.04%	12	13.04%
Fremont SO	32	5	15.63%	8	25.00%
Lander PD	15	3	20.00%		
Other	13	1	7.69%	4	30.77%
Riverton PD	15	14	93.33%		
Shoshoni PD	2	2	100.00%		
WHP	5	3	60.00%		
WRPD	10	7	70.00%		

Resisting Arrest

County Department	Resisting Arrest Offenses	Number Involving Alcohol	Percent Involving Alcohol	Number Involving Drugs	Percent Involving Drugs
Fremont County	101	99	98.02%	8	7.92%
Fremont SO	7	6	85.71%	2	28.57%
Lander PD	21	20	95.24%		
Other	5	5	100.00%		
Riverton PD	58	58	100.00%	4	6.90%
Shoshoni PD					
WHP					
WRPD	10	10	100.00%	2	20.00%

Misdemeanor Offenses

County Department	Misdemeanor Offenses	Number Involving Alcohol	Percent Involving Alcohol	Number Involving Drugs	Percent Involving Drugs
Fremont County	1806	1532	84.83%	79	4.37%
Fremont SO	340	228	67.06%	24	7.06%
Lander PD	379	273	72.03%	11	2.90%
Other	40	27	67.50%		
Riverton PD	731	720	98.50%	33	4.51%
Shoshoni PD	8	5	62.50%		
WHP	55	37	67.27%	3	5.45%
WRPD	253	242	95.65%	8	3.16%

Assault

County Department	Assault Offenses	Number Involving Alcohol	Percent Involving Alcohol	Number Involving Drugs	Percent Involving Drugs
Fremont County	81	65	80.25%	5	6.17%
Fremont SO	15	11	73.33%	1	6.67%
Lander PD	14	10	71.43%		
Other	7	7	100.00%		
Riverton PD	23	23	100.00%	1	4.35%
Shoshoni PD	1	1	100.00%		
WHP	1				
WRPD	20	13	65.00%	3	15.00%

Location of Alcohol Consumption and Point of Sale by Department

Department	Location of Consumption							Point of Sale					
	Alcohol Involved	Home	Bar	Party	Car	Other	No Response	Home	Bar	Drive Up	Party	Liquor Store	No Response
Fremont SO	249	76	40	11	24	12	62	23	33	1	4	15	102
Lander PD	312	39	49	7	6	9	126	13	44	1	5	10	136
Other	196	40	2	1	3	78	62	10	2	1	1	98	66
Riverton PD	814	108	129	24	17	147	334	31	121	3	16	153	398
Shoshoni PD	9	3	1	1		1	2	2	1		1	1	2
WHP	43	7	9		14	2	3	3	6	1		9	9
WRPD	258	92	2	9	14	53	69	30	4		4	98	91
Fremont County Totals	1008	365	232	53	78	302	658	112	211	7	31	384	804

Location of Alcohol Consumption

Dept.	Bar Name	Number of Reports	
Fremont SO	B&B	3	
	Bomber's	3	
	Boot	1	
	Cedar	1	
	Forge	1	
	Lander Bar	1	
	Livestock	1	
	Max's	1	
	Million Dollar Bar	2	
	Possam Pete's	1	
	River City	4	
	Rustic Pine	2	
	Silver Spur	1	
	Time Out	2	
	VFW	3	
	Vic's	2	
	Whiskey River	5	
	Lander PD	B & B	7
		Forge	18
		Lander Bar	7
Silver Spur		3	
Vic's		9	
Other	River City	2	
Riverton PD	Bar 10	2	
	Bomber's	52	
	Boot	17	
	Cedar	3	

Dept.	Bar Name	Number of Reports
Riverton PD	Eagle's Club	1
	Livestock	7
	Pinecrest	1
	Ralff's	10
	River City	11
	Sadie's	5
	Sundowner	1
	Timeout	3
	Woodwards	1
	Shoshoni PD	Lucky 5 Lounge
WHP	IGA	1
	Left Tackle	2
WRPD	River City	1
	Boot	1
	Cedar's	1

* Total of percents in Location of Consumption and Point of Sale categories may exceed 100% due to single arrests involving more than on location or point of sale.

Goshen County Arrests
January 1, 2010 - December 31, 2010

Numbers by Department

County	Total Offenses	Misde-meanor	Felony	Domestic Violence	Resist Arrest	Assault	Public Intox	Alcohol Involved	Drugs Involved	Traffic Crash	Female	Male	Unknown Gender	Average Age
Goshen County	249	218	25	14	12	18	37	176	15	32	54	194	1	32.53
Goshen SO	53	42	10	3	1	4		28	3	16	11	41	1	36.20
Lingle PD	2	2						1		9		2	0	19.00
Other	14	12			1	1	3	12			3	11	0	29.00
Torrington PD	154	140	11	11	10	13	34	121	7		35	119	0	31.81
WHP	26	22	4					14	5	7	5	21	0	31.88

Percents by Department *

County	Total Offenses	Misde-meanor	Felony	Domestic Violence	Resist Arrest	Assault	Public Intox	Alcohol Involved	Drugs Involved	Traffic Crash	Female	Male	Unkown Gender
Goshen County	249	87.55%	10.04%	5.62%	4.82%	7.23%	14.86%	70.68%	6.02%	12.85%	21.69%	77.91%	0.40%
Goshen SO	53	79.25%	18.87%	5.66%	1.89%	7.55%	0.00%	52.83%	5.66%	30.19%	20.75%	77.36%	1.89%
Lingle PD	2	100.00%	0.00%	0.00%	0.00%	0.00%	0.00%	50.00%	0.00%	450.00%	0.00%	100.00%	0.00%
Other	14	85.71%	0.00%	0.00%	7.14%	7.14%	21.43%	85.71%	0.00%	0.00%	21.43%	78.57%	0.00%
Torrington PD	154	90.91%	7.14%	7.14%	6.49%	8.44%	22.08%	78.57%	4.55%	0.00%	22.73%	77.27%	0.00%
WHP	26	84.62%	15.38%	0.00%	0.00%	0.00%	0.00%	53.85%	19.23%	26.92%	19.23%	80.77%	0.00%

* Total percents may not equal 100 due to lack of information, or a single arrest involving multiple crimes.

MIP Arrests

County Department	DUI Offenses	MIP Arrests	% MIP to DUI	Average MIP BAC
Goshen County	124	5	4.03%	0.240
Goshen SO	25	2	8.00%	0.220
Lingle PD				
Other	8			
Torrington PD	76	3	3.95%	0.280
WHP	15			

DUI Arrests

County Department	Total Offenses	DUI Offenses	% DUI Of Total	Ave. BAC	DUI Involving Drugs	% DUI Involving Drugs
Goshen County	249	124	49.80%	0.157	5	2.01%
Goshen SO	53	25	47.17%	0.185	3	5.66%
Lingle PD	2		0.00%			
Other	14	8	57.14%	0.160		
Torrington PD	154	76	49.35%	0.149	2	1.30%
WHP	26	15	57.69%	0.150		

Underage DUI Arrests

County Department	DUI Offenses	Underage Offenses	% DUI Of Total	Ave. BAC	Drugs Involved	% DUI Drugs Inv.
Goshen County	124	8	6.45%	0.090	1	0.81%
Goshen SO	25	1	4.00%		1	4.00%
Lingle PD						
Other	8					
Torrington PD	76	7	9.21%	0.090		
WHP	15					

Meth, Drugs & Public Intoxication

County Department	Total Offenses	Meth Involved	Drugs Involved	Public Intox.	Pub. Intox. Ave. BAC
Goshen County	249	0	15	37	0.251
Goshen SO	53		3		
Lingle PD	2				
Other	14			3	0.305
Torrington PD	154		7	34	0.248
WHP	26		5		

Traffic Crashes

County Department	Traffic Crashes	Alcohol Involved	% Alcohol Involved	Average BAC	Drugs Involved	% Drugs Involved
Goshen County	16	13	81.25%	0.197	2	14.29%
Goshen SO	9	7	77.78%	0.206	1	
Lingle PD						
Other						
Torrington PD	7	6	85.71%	0.187	1.0000	
WHP						

Alcohol and Drug Involvement

Total Offenses

County Department	Total Offenses	Number Involving Alcohol	Percent Involving Alcohol	Number Involving Drugs	Percent Involving Drugs
Goshen County	249	176	70.68%		0.00%
Goshen SO	53	28	52.83%		0.00%
Lingle PD	2	1	50.00%		
Other	14	12	85.71%		0.00%
Torrington PD	154	121	78.57%		0.00%
WHP	26	14	53.85%		0.00%

Domestic Violence

County Department	Domestic Violence Offenses	Number Involving Alcohol	Percent Involving Alcohol	Number Involving Drugs	Percent Involving Drugs
Goshen County	14	6	42.86%	0	
Goshen SO	3				
Lingle PD					
Other					
Torrington PD	11	6	54.55%		
WHP					

Felony Offenses

County Department	Felony Offenses	Number Involving Alcohol	Percent Involving Alcohol	Number Involving Drugs	Percent Involving Drugs
Goshen County	25	3	12.00%	5	20.00%
Goshen SO	10	1	10.00%		
Lingle PD					
Other					
Torrington PD	11	2	18.18%	1	9.09%
WHP	4			4	100.00%

Resisting Arrest

County Department	Resisting Arrest Offenses	Number Involving Alcohol	Percent Involving Alcohol	Number Involving Drugs	Percent Involving Drugs
Goshen County	12	5	41.67%	0	
Goshen SO	1				
Lingle PD					
Other	1				
Torrington PD	10	5	50.00%		
WHP					

Misdemeanor Offenses

County Department	Misdemeanor Offenses	Number Involving Alcohol	Percent Involving Alcohol	Number Involving Drugs	Percent Involving Drugs
Goshen County	218	165	75.69%	11	5.05%
Goshen SO	42	25	59.52%	3	7.14%
Lingle PD	2	1	50.00%		
Other	12	10	83.33%		
Torrington PD	140	115	82.14%	6	4.29%
WHP	22	4	18.18%	2	9.09%

Assault

County Department	Assault Offenses	Number Involving Alcohol	Percent Involving Alcohol	Number Involving Drugs	Percent Involving Drugs
Goshen County	18	6	33.33%	0	0.00%
Goshen SO	4	2	50.00%		
Lingle PD					
Other	1				
Torrington PD	13	4	30.77%		
WHP					

Location of Alcohol Consumption and Point of Sale by Department

Department	Alcohol Involved	Location of Consumption						Point of Sale					
		Home	Bar	Party	Car	Other	No Response	Home	Bar	Drive Up	Party	Liquor Store	No Response
Goshen SO	28	1	1				24		1				25
Lingle PD	1						1						
Other	12		4				6		4				5
Torrington PD	121	6	23	1		2	76	3	23		1		76
WHP	14						1						1
Goshen County Totals	176	7	28	1	0	2	108	3	28	0	1	0	107

Location of Alcohol Consumption

Dept.	Bar Name	Number of Reports
Goshen SO	Tote Away	1
Other	Hi-Way	1
	Moose	1
	Tote Away	2
Torrington PD	Bronco	6
	Days Inn	1
	Hi-Way	4
	Main Street Saloon	1
	Tote Away	10

* Total of percents in Location of Consumption and Point of Sale categories may exceed 100% due to single arrests involving more than on location or point of sale.

Hot Springs County Arrests
January 1, 2010 - December 31, 2010

Numbers by Department

County	Total Offenses	Misde-meanor	Felony	Domestic Violence	Resist Arrest	Assault	Public Intox	Alcohol Involved	Drugs Involved	Traffic Crash	Female	Male	Unknown Gender	Average Age
Hot Springs County	64	49	7	8	1	4	6	44	8	5	12	52	0	37.61
Hot Springs SO	19	15	2	3		1	1	10	3	2	3	16	0	37.25
Other	5	2						3				5		41.60
Thermopolis PD	37	29	5	5	1	3	5	28	4	3	8	29	0	36.71
WHP	3	3						3	1		1	2	0	55.00

Percents by Department *

County	Total Offenses	Misde-meanor	Felony	Domestic Violence	Resist Arrest	Assault	Public Intox	Alcohol Involved	Drugs Involved	Traffic Crash	Female	Male	Unkown Gender
Hot Springs County	64	76.56%	10.94%	12.50%	1.56%	6.25%	9.38%	68.75%	12.50%	7.81%	18.75%	81.25%	0.00%
Hot Springs SO	19	78.95%	10.53%	15.79%	0.00%	5.26%	5.26%	52.63%	15.79%	10.53%	15.79%	84.21%	0.00%
Other	5	40.00%	0.00%	0.00%	0.00%	0.00%	0.00%	60.00%	0.00%	0.00%	0.00%	100.00%	0.00%
Thermopolis PD	37	78.38%	13.51%	13.51%	2.70%	8.11%	13.51%	75.68%	10.81%	8.11%	21.62%	78.38%	0.00%
WHP	3	100.00%	0.00%	0.00%	0.00%	0.00%	0.00%	100.00%	33.33%	0.00%	33.33%	66.67%	0.00%

* Total percents may not equal 100 due to lack of information, or a single arrest involving multiple crimes.

MIP Arrests

County Department	DUI Offenses	MIP Arrests	% MIP to DUI	Average MIP BAC
Hot Springs County	29	1	3.45%	0.070
Hot Springs SO	9			
Other	2			
Thermopolis PD	15	1	6.67%	0.070
WHP	3			

DUI Arrests

County Department	Total Offenses	DUI Offenses	% DUI Of Total	Ave. BAC	DUI Involving Drugs	% DUI Involving Drugs
Hot Springs County	64	29	45.31%	0.168	2	6.90%
Hot Springs SO	19	9	47.37%	0.180		
Other	5	2		0.092		
Thermopolis PD	37	15	40.54%	0.170	1	6.67%
WHP	3	3	100.00%	0.205	1	33.33%

Underage DUI Arrests

County Department	DUI Offenses	Underage Offenses	% DUI Of Total	Ave. BAC	Drugs Involved	% DUI Drugs Inv.
Hot Springs County	29	1	3.45%	0.170	0	
Hot Springs SO	9		0.00%			
Other	2					
Thermopolis PD	15	1	6.67%	0.170		
WHP	3					

Meth, Drugs & Public Intoxication

County Department	Total Offenses	Meth Involved	Drugs Involved	Public Intox.	Pub. Intox. Ave. BAC
Hot Springs County	64	1	8	6	0.226
Hot Springs SO	19	1	3	1	0.219
Other	5				
Thermopolis PD	37		4	5	0.232
WHP	3		1		

Traffic Crashes

County Department	Traffic Crashes	Alcohol Involved	% Alcohol Involved	Average BAC	Drugs Involved	% Drugs Involved
Hot Springs County	5	4	80.00%	0.229	1	25.00%
Hot Springs SO	2	1	50.00%		1	100.00%
Other						
Thermopolis PD	3	3	100.00%	0.229		
WHP						

Alcohol and Drug Involvement

Total Offenses

County Department	Total Offenses	Number Involving Alcohol	Percent Involving Alcohol	Number Involving Drugs	Percent Involving Drugs
Hot Springs County	64	44	68.75%	8	12.50%
Hot Springs SO	19	10	52.63%	3	15.79%
Other	5	3			
Thermopolis PD	37	28	75.68%	4	10.81%
WHP	3	3	100.00%	1	33.33%

Domestic Violence

County Department	Domestic Violence Offenses	Number Involving Alcohol	Percent Involving Alcohol	Number Involving Drugs	Percent Involving Drugs
Hot Springs County	8	3	37.50%	0	
Hot Springs SO	3	1	33.33%		
Other					
Thermopolis PD	5	2	40.00%		
WHP					

Felony Offenses

County Department	Felony Offenses	Number Involving Alcohol	Percent Involving Alcohol	Number Involving Drugs	Percent Involving Drugs
Hot Springs County	7	3	42.86%	1	14.29%
Hot Springs SO	2				
Other					
Thermopolis PD	5	3	60.00%	1	20.00%
WHP					

Resisting Arrest

County Department	Resisting Arrest Offenses	Number Involving Alcohol	Percent Involving Alcohol	Number Involving Drugs	Percent Involving Drugs
Hot Springs County	1	1	100.00%	0	
Hot Springs SO					
Other					
Thermopolis PD	1	1	100.00%		
WHP					

Misdemeanor Offenses

County Department	Misdemeanor Offenses	Number Involving Alcohol	Percent Involving Alcohol	Number Involving Drugs	Percent Involving Drugs
Hot Springs County	49	34	69.39%	8	16.33%
Hot Springs SO	15	9	60.00%	3	20.00%
Other	2				
Thermopolis PD	29	22	75.86%	4	13.79%
WHP	3	3	100.00%	1	33.33%

Assault

County Department	Assault Offenses	Number Involving Alcohol	Percent Involving Alcohol	Number Involving Drugs	Percent Involving Drugs
Hot Springs County	4	1	25.00%	0	
Hot Springs SO	1				
Other					
Thermopolis PD	3	1	33.33%		
WHP					

Location of Alcohol Consumption and Point of Sale by Department

Department	Alcohol Involved	Location of Consumption						Point of Sale					
		Home	Bar	Party	Car	Other	No Response	Home	Bar	Drive Up	Party	Liquor Store	No Response
Hot Springs SO	10	3	2	2	3		1	1	3			3	2
Thermopolis PD	3	1	2	2	2	1	3	2	2	1	1	1	4
Other	28	7	8						8			2	
WHP	3	1	1				1		1			1	
Hot Springs County Totals	44	12	13	4	5	1	5	3	14	1	1	7	6

Location of Alcohol Consumption

Dept.	Bar Name	Number of Reports
Hot Springs SO	Mac's	1
	Safari Club	1
Other	Days Inn	2
Thermopolis PD	Days Inn	1
	Eagles	1
	Mac's	2
	Safari Club	1
WHP	Dutchman	1

* Total of percents in Location of Consumption and Point of Sale categories may exceed 100% due to single arrests involving more than one location or point of sale.

Johnson County Arrests
January 1, 2010 - December 31, 2010

Numbers by Department

County	Total Offenses	Misde-meanor	Felony	Domestic Violence	Resist Arrest	Assault	Public Intox	Alcohol Involved	Drugs Involved	Traffic Crash	Female	Male	Unknown Gender	Average Age
Johnson County	229	181	32	21	4	12	23	112	49	11	62	166	1	33.81
Buffalo PD	100	77	10	15	3	8	22	66	14	4	33	67	0	36.33
Johnson SO	98	77	18	6	1	4		32	27	5	25	73	0	31.58
Kaycee PD	3	3					1	2	1	1	1	2	0	24.00
Other	1	1							1			1	0	
WHP	27	23	4					12	6	1	3	23	1	32.62

Percents by Department *

County	Total Offenses	Misde-meanor	Felony	Domestic Violence	Resist Arrest	Assault	Public Intox	Alcohol Involved	Drugs Involved	Traffic Crash	Female	Male	Unkown Gender
Johnson County	229	79.04%	13.97%	9.17%	1.75%	5.24%	10.04%	48.91%	21.40%	4.80%	27.07%	72.49%	0.44%
Buffalo PD	100	77.00%	10.00%	15.00%	3.00%	8.00%	22.00%	66.00%	14.00%	4.00%	33.00%	67.00%	0.00%
Johnson SO	98	78.57%	18.37%	6.12%	1.02%	4.08%	0.00%	32.65%	27.55%	5.10%	25.51%	74.49%	0.00%
Kaycee PD	3	100.00%	0.00%	0.00%	0.00%	0.00%	33.33%	66.67%	33.33%	33.33%	33.33%	66.67%	0.00%
Other	1	100.00%	0.00%	0.00%	0.00%	0.00%	0.00%	0.00%	100.00%	0.00%	0.00%	100.00%	0.00%
WHP	27	85.19%	14.81%	0.00%	0.00%	0.00%	0.00%	44.44%	22.22%	3.70%	11.11%	85.19%	3.70%

* Total percents may not equal 100 due to lack of information, or a single arrest involving multiple crimes.

MIP Arrests

County Department	DUI Offenses	MIP Arrests	% MIP to DUI	Average MIP BAC
Johnson County	55	8	14.55%	0.161
Buffalo PD	17	5	29.41%	0.161
Johnson SO	24	3	12.50%	
Kaycee PD	1			
Other				
WHP	13			

DUI Arrests

County Department	Total Offenses	DUI Offenses	% DUI Of Total	Ave. BAC	DUI Involving Drugs	% DUI Involving Drugs
Johnson County	229	55	24.02%	0.172	11	20.00%
Buffalo PD	100	17	17.00%	0.206	2	11.76%
Johnson SO	98	24	24.49%	0.166	5	20.83%
Kaycee PD	3	1	33.33%	0.174		
Other	1					
WHP	27	13	48.15%	0.090	4	30.77%

Underage DUI Arrests

County Department	DUI Offenses	Underage Offenses	% DUI Of Total	Ave. BAC	Drugs Involved	% DUI Drugs Inv.
Johnson County	55	2	3.64%	0.100	1	50.00%
Buffalo PD	17					
Johnson SO	24	1	4.17%			
Kaycee PD	1					
Other						
WHP	13	1	7.69%	0.100	1	100.00%

Meth, Drugs & Public Intoxication

County Department	Total Offenses	Meth Involved	Drugs Involved	Public Intox.	Pub. Intox. Ave. BAC
Johnson County	229	18	49	23	0.200
Buffalo PD	100	6	14	22	0.200
Johnson SO	98	11	27		
Kaycee PD	3		1	1	
Other	1		1		
WHP	27	1	6		

Traffic Crashes

County Department	Traffic Crashes	Alcohol Involved	% Alcohol Involved	Average BAC	Drugs Involved	% Drugs Involved
Johnson County	11	10	90.91%	0.167	0	
Buffalo PD	4	4	100.00%	0.255		
Johnson SO	5	4	80.00%	0.145		
Kaycee PD	1	1	100.00%	0.174		
Other						
WHP	1	1	100.00%	0.050		

Alcohol and Drug Involvement

Total Offenses

County Department	Total Offenses	Number Involving Alcohol	Percent Involving Alcohol	Number Involving Drugs	Percent Involving Drugs
Johnson County	229	112	48.91%		0.00%
Buffalo PD	100	66	66.00%		0.00%
Johnson SO	98	32	32.65%		0.00%
Kaycee PD	3	2	66.67%		
Other	1		0.00%		
WHP	27	12	44.44%		0.00%

Domestic Violence

County Department	Domestic Violence Offenses	Number Involving Alcohol	Percent Involving Alcohol	Number Involving Drugs	Percent Involving Drugs
Johnson County	21	11	52.38%	2	9.52%
Buffalo PD	15	11	73.33%	2	13.33%
Johnson SO	6				
Kaycee PD					
Other					
WHP					

Felony Offenses

County Department	Felony Offenses	Number Involving Alcohol	Percent Involving Alcohol	Number Involving Drugs	Percent Involving Drugs
Johnson County	32	5	15.63%	16	50.00%
Buffalo PD	10	3	30.00%	6	60.00%
Johnson SO	18	1	5.56%	10	55.56%
Kaycee PD					
Other					
WHP	4	1	25.00%		

Resisting Arrest

County Department	Resisting Arrest Offenses	Number Involving Alcohol	Percent Involving Alcohol	Number Involving Drugs	Percent Involving Drugs
Johnson County	4	4	100.00%	0	
Buffalo PD	3	3	100.00%		
Johnson SO	1	1	100.00%		
Kaycee PD					
Other					
WHP					

Misdemeanor Offenses

County Department	Misdemeanor Offenses	Number Involving Alcohol	Percent Involving Alcohol	Number Involving Drugs	Percent Involving Drugs
Johnson County	181	97	53.59%	33	18.23%
Buffalo PD	77	54	70.13%	9	11.69%
Johnson SO	77	30	38.96%	16	20.78%
Kaycee PD	3	2	66.67%	1	33.33%
Other	1		0.00%	1	100.00%
WHP	23	11	47.83%	6	26.09%

Assault

County Department	Assault Offenses	Number Involving Alcohol	Percent Involving Alcohol	Number Involving Drugs	Percent Involving Drugs
Johnson County	12	6	50.00%	1	8.33%
Buffalo PD	8	5	62.50%	1	12.50%
Johnson SO	4	1	25.00%		
Kaycee PD					
Other					
WHP					

Location of Alcohol Consumption and Point of Sale by Department

Department	Alcohol Involved	Location of Consumption						Point of Sale					
		Home	Bar	Party	Car	Other	No Response	Home	Bar	Drive Up	Party	Liquor Store	No Response
Buffalo PD	66	14	25	4	1	2	13	3	21		2	5	17
Johnson SO	32	6	7	2	4	3		1	7			7	1
Kaycee PD	2			1									
Other													
WHP	12	1	2	3	2	2	1		1		2	2	2
Johnson County													
Totals	112	21	34	10	7	7	14	4	29	0	4	14	20

Location of Alcohol Consumption

Dept.	Bar Name	Number of Reports
Buffalo PD	Bezeman	3
	Century Club	8
	Cowboy	1
	Hoot N Howl	3
	Outback	2
Johnson SO	Century Club	1
	Cowboy	3
	Hoot N Howl	2
	Outback	1
WHP	Century Club	1

* Total of percents in Location of Consumption and Point of Sale categories may exceed 100% due to single arrests involving more than one location or point of sale.

Laramie County Arrests
January 1, 2010 - December 31, 2010

Numbers by Department

County	Total Offenses	Misde-meanor	Felony	Domestic Violence	Resist Arrest	Assault	Public Intox	Alcohol Involved	Drugs Involved	Traffic Crash	Female	Male	Unknown Gender	Average Age
Laramie County	1851	1467	197	232	48	59	244	1222	169	63	313	1512	26	34.30
Burns PD	4	4		2				2	1		3	1	0	40.25
Cheyenne PD	1113	891	98	159	44	42	229	757	81	37	174	923	16	34.22
DCI	21	3	17					3	12		8	13	0	33.70
Laramie SO	475	388	38	70	4	14	9	312	24	7	96	375	4	33.64
Other	48	27	17	1		1	4	20	16	2	11	37	0	35.56
Pine Bluffs PD	13	7	6					1	4		1	12	0	31.42
WHP	177	147	21			2	2	127	31	17	20	151	6	36.33

Percents by Department *

County	Total Offenses	Misde-meanor	Felony	Domestic Violence	Resist Arrest	Assault	Public Intox	Alcohol Involved	Drugs Involved	Traffic Crash	Female	Male	Unkown Gender
Laramie County	1851	79.25%	10.64%	12.53%	2.59%	3.19%	13.18%	66.02%	9.13%	3.40%	16.91%	81.69%	1.40%
Burns PD	4	100.00%	0.00%	50.00%	0.00%	0.00%	0.00%	50.00%	25.00%	0.00%	75.00%	25.00%	0.00%
Cheyenne PD	1113	80.05%	8.81%	14.29%	3.95%	3.77%	20.58%	68.01%	7.28%	3.32%	15.63%	82.93%	1.44%
DCI	21	14.29%	80.95%	0.00%	0.00%	0.00%	0.00%	14.29%	57.14%	0.00%	38.10%	61.90%	0.00%
Laramie SO	475	81.68%	8.00%	14.74%	0.84%	2.95%	1.89%	65.68%	5.05%	1.47%	20.21%	78.95%	0.84%
Other	48	56.25%	35.42%	2.08%	0.00%	2.08%	8.33%	41.67%	33.33%	4.17%	22.92%	77.08%	0.00%
Pine Bluffs PD	13	53.85%	46.15%	0.00%	0.00%	0.00%	0.00%	7.69%	30.77%	0.00%	7.69%	92.31%	0.00%
WHP	177	83.05%	11.86%	0.00%	0.00%	1.13%	1.13%	71.75%	17.51%	9.60%	11.30%	85.31%	3.39%

* Total percents may not equal 100 due to lack of information, or a single arrest involving multiple crimes.

MIP Arrests

County Department	DUI Offenses	MIP Arrests	% MIP to DUI	Average MIP BAC
Laramie County	728	4	0.55%	No rpt.
Burns PD	1			
Cheyenne PD	332	3	0.90%	
DCI				
Laramie SO	250	1	0.40%	
Other	12			
Pine Bluffs PD	1			
WHP	132			

Meth, Drugs & Public Intoxication

County Department	Total Offenses	Meth Involved	Drugs Involved	Public Intox.	Pub. Intox. Ave. BAC
Laramie County	1851	55	169	244	0.219
Burns PD	4		1		
Cheyenne PD	1113	28	81	229	0.222
DCI	21	7	12		
Laramie SO	475	7	24	9	0.112
Other	48	6	16	4	0.240
Pine Bluffs PD	13	4	4		
WHP	177	3	31	2	

DUI Arrests

County Department	Total Offenses	DUI Offenses	% DUI Of Total	Ave. BAC	DUI Involving Drugs	% DUI Involving Drugs
Laramie County	1851	728	39.33%	0.158	46	6.32%
Burns PD	4	1	25.00%		1	100.00%
Cheyenne PD	1113	332	29.83%	0.164	14	4.22%
DCI	21					
Laramie SO	475	250	52.63%	0.151	14	5.60%
Other	48	12		0.215	2	16.67%
Pine Bluffs PD	13	1	7.69%			
WHP	177	132	74.58%	0.156	15	11.36%

Traffic Crashes

County Department	Traffic Crashes	Alcohol Involved	% Alcohol Involved	Average BAC	Drugs Involved	% Drugs Involved
Laramie County	63	49	77.78%	0.178	6	9.52%
Burns PD						
Cheyenne PD	37	30	81.08%	0.177	4	10.81%
DCI						
Laramie SO	7	5	71.43%	0.250	1	14.29%
Other	2					
Pine Bluffs PD						
WHP	17	14	82.35%	0.171	1	5.88%

Underage DUI Arrests

County Department	DUI Offenses	Underage Offenses	% DUI Of Total	Ave. BAC	Drugs Involved	% DUI Drugs Inv.
Laramie County	728	46	6.32%	0.140	4	8.70%
Burns PD	1					
Cheyenne PD	332	25	7.53%	0.140		
DCI						
Laramie SO	250	17	6.80%	0.145	3	17.65%
Other	12					
Pine Bluffs PD	1					
WHP	132	4	3.03%	0.110	1	25.00%

Alcohol and Drug Involvement

Total Offenses

County Department	Total Offenses	Number Involving Alcohol	Percent Involving Alcohol	Number Involving Drugs	Percent Involving Drugs
Laramie County	1851	1222	66.02%	169	9.13%
Burns PD	4	2	50.00%	1	25.00%
Cheyenne PD	1113	757	68.01%	81	7.28%
DCI	21	3		12	57.14%
Laramie SO	475	312	65.68%	24	5.05%
Other	48	20	41.67%	16	33.33%
Pine Bluffs PD	13	1	7.69%	4	30.77%
WHP	177	127	71.75%	31	17.51%

Felony Offenses

County Department	Felony Offenses	Number Involving Alcohol	Percent Involving Alcohol	Number Involving Drugs	Percent Involving Drugs
Laramie County	197	40	20.30%	44	22.34%
Burns PD					
Cheyenne PD	98	28	28.57%	14	14.29%
DCI	17	2	11.76%	10	58.82%
Laramie SO	38	5	13.16%	2	5.26%
Other	17	1	5.88%	9	52.94%
Pine Bluffs PD	6			3	50.00%
WHP	21	4	19.05%	6	28.57%

Misdemeanor Offenses

County Department	Misdemeanor Offenses	Number Involving Alcohol	Percent Involving Alcohol	Number Involving Drugs	Percent Involving Drugs
Laramie County	1467	1053	71.78%	106	7.23%
Burns PD	4	2	50.00%	1	25.00%
Cheyenne PD	891	644	72.28%	54	6.06%
DCI	3	1	33.33%	2	66.67%
Laramie SO	388	273	70.36%	18	4.64%
Other	27	16	59.26%	7	25.93%
Pine Bluffs PD	7	1	14.29%	1	14.29%
WHP	147	116	78.91%	23	15.65%

Domestic Violence

County Department	Domestic Violence Offenses	Number Involving Alcohol	Percent Involving Alcohol	Number Involving Drugs	Percent Involving Drugs
Laramie County	232	111	47.84%	7	3.02%
Burns PD	2	2	100.00%		
Cheyenne PD	159	78	49.06%	6	3.77%
DCI					
Laramie SO	70	31	44.29%	1	1.43%
Other	1				
Pine Bluffs PD					
WHP					

Resisting Arrest

County Department	Resisting Arrest Offenses	Number Involving Alcohol	Percent Involving Alcohol	Number Involving Drugs	Percent Involving Drugs
Laramie County	48	31	64.58%	2	4.17%
Burns PD					
Cheyenne PD	44	29	65.91%	2	4.55%
DCI					
Laramie SO	4	2	50.00%		
Other					
Pine Bluffs PD					
WHP					

Assault

County Department	Assault Offenses	Number Involving Alcohol	Percent Involving Alcohol	Number Involving Drugs	Percent Involving Drugs
Laramie County	59	21	35.59%	1	1.69%
Burns PD					
Cheyenne PD	42	12	28.57%	1	2.38%
DCI					
Laramie SO	14	8	57.14%		
Other	1	1	100.00%		
Pine Bluffs PD					
WHP	2				

Location of Alcohol Consumption and Point of Sale by Department

Department	Location of Consumption							Point of Sale					
	Alcohol Involved	Home	Bar	Party	Car	Other	No Response	Home	Bar	Drive Up	Party	Liquor Store	No Response
Burns PD	2	1	1					1	1				
Cheyenne PD	757	165	207	35	24	70	72	88	209	3	32	92	100
DCI	3	2										2	
Laramie SO	312	76	127	12	4	28	11	46	122	1	8	38	15
Other	20	2	2			2	5		2			1	5
Pine Bluffs PD	1				1								1
WHP	127	26	29	1	18	26	2	17	33	1	2	24	11
Laramie County													
Totals	1222	272	366	48	47	126	90	152	367	5	42	157	132

Location of Alcohol Consumption

Dept.	Bar Name	Number of Reports
Burns PD	Mingles	1
Cheyenne PD	2 Bar	1
	Alf's	2
	American Legion	1
	Anderson's	1
	CB Potts	1
	Clown's Den	4
	Crown	20
	Depot Brewfest	1
	Drunken Skunk	5
	DTs	8
	Eagle's Nest	4
	Four Winds	4
	Frontier	1
	Goofy's	16
	Green Door	8
	Happy Jack	1
	Jackon's	2
	Keg & Cork	2
	Lamp Lounge	10
	Mayflower	7
	Mingles	12
	Old Chicago	6
	Outlaw	12

Dept.	Bar Name	Number of Reports
	Redwood	8
	Scooter's	10
	Texas Roadhouse	3
	Tusker's	8
	Uncle Charlie's	1
	VFW	2
Laramie SO	Bunkhouse	1
	Camp Lounge	1
	Clown's Den	4
	Cowboy Bar	1
	Crown	2
	DTs	3
	Goofy's	5
	Green Door	1
	Lamp Lounge	20
	Mingles	5
	Moose Lodge	3
	Old Chicago	2
	Outlaw	42
	Redwood	3
	Scooter's	2
	Tusker's	4

Dept.	Bar Name	Number of Reports
Other	Four Winds	1
WHP	Alf's	1
	Bunkhouse	1
	Clown's Den	1
	Crown	1
	Eagle's Nest	1
	Goofy's	3
	Green Door	1
	Lamp Lounge	1
	Mingles	1
	Moose Lodge	1
	Outlaw	2
	Redwood	1
	Scooter's	1
	Tumbleweed	1

* Total of percents in Location of Consumption and Point of Sale categories may exceed 100% due to single arrests involving more than one location or point of sale.

Lincoln County Arrests
January 1, 2010 - December 31, 2010

Numbers by Department

County	Total Offenses	Misde-meanor	Felony	Domestic Violence	Resist Arrest	Assault	Public Intox	Alcohol Involved	Drugs Involved	Traffic Crash	Female	Male	Unknown Gender	Average Age
Lincoln County	278	242	22	23	2	24	15	188	48	15	51	220	7	34.81
Afton PD	12	9	2	1		2		6	2	1	6	6	0	30.30
Alpine PD	25	25		2		4	2	24	4		7	18	0	37.00
Cokeville PD	12	8	4			1		1	4		1	11	0	30.22
Diamondville PD	19	17				1	1	9	5		3	16	0	29.00
Kemmerer PD	90	78	2	7	1	5	10	71	6	3	15	73	2	36.20
La Barge PD	11	10	1	2		1	1	7	2		2	9	0	38.33
Lincoln SO	78	65	11	11	1	10	1	50	13	8	10	66	2	32.49
Other	1	1						1				1	0	47.00
WHP	30	29	2					19	12	3	7	20	3	37.74

Percents by Department *

County	Total Offenses	Misde-meanor	Felony	Domestic Violence	Resist Arrest	Assault	Public Intox	Alcohol Involved	Drugs Involved	Traffic Crash	Female	Male	Unkown Gender
Lincoln County	278	87.05%	7.91%	8.27%	0.72%	8.63%	5.40%	67.63%	17.27%	5.40%	18.35%	79.14%	2.52%
Afton PD	12	75.00%	16.67%	8.33%	0.00%	16.67%	0.00%	50.00%	16.67%	8.33%	50.00%	50.00%	0.00%
Alpine PD	25	100.00%	0.00%	8.00%	0.00%	16.00%	8.00%	96.00%	16.00%	0.00%	28.00%	72.00%	0.00%
Cokeville PD	12	66.67%	33.33%	0.00%	0.00%	8.33%	0.00%	8.33%	33.33%	0.00%	8.33%	91.67%	0.00%
Diamondville PD	19	89.47%	0.00%	0.00%	0.00%	5.26%	5.26%	47.37%	26.32%	0.00%	15.79%	84.21%	0.00%
Kemmerer PD	90	86.67%	2.22%	7.78%	1.11%	5.56%	11.11%	78.89%	6.67%	3.33%	16.67%	81.11%	2.22%
La Barge PD	11	90.91%	9.09%	18.18%	0.00%	9.09%	9.09%	63.64%	18.18%	0.00%	18.18%	81.82%	0.00%
Lincoln SO	78	83.33%	14.10%	14.10%	1.28%	12.82%	1.28%	64.10%	16.67%	10.26%	12.82%	84.62%	2.56%
Other	1	100.00%	0.00%	0.00%	0.00%	0.00%	0.00%	100.00%	0.00%	0.00%	0.00%	100.00%	0.00%
WHP	30	96.67%	6.67%	0.00%	0.00%	0.00%	0.00%	63.33%	40.00%	10.00%	23.33%	66.67%	10.00%

* Total percents may not equal 100 due to lack of information, or a single arrest involving multiple crimes.

MIP Arrests

County Department	DUI Offenses	MIP Arrests	% MIP to DUI	Average MIP BAC
Lincoln County	137	10	7.30%	0.154
Afton PD	6			
Alpine PD	18			
Cokeville PD	1			
Diamondville PD	4	1	25.00%	
Kemmerer PD	45	3	6.67%	0.160
La Barge PD	3			
Lincoln SO	36	5	13.89%	0.150
Other	1			
WHP	23	1	4.35%	

Meth, Drugs & Public Intoxication

County Department	Total Offenses	Meth Involved	Drugs Involved	Public Intox.	Pub. Intox. Ave. BAC
Lincoln County	278	15	48	15	0.202
Afton PD	12		2		
Alpine PD	25	2	4	2	
Cokeville PD	12		4		
Diamondville PD	19		5	1	0.130
Kemmerer PD	90	3	6	10	0.229
La Barge PD	11	2	2	1	0.228
Lincoln SO	78	4	13	1	0.110
Other	1				
WHP	30	4	12		

DUI Arrests

County Department	Total Offenses	DUI Offenses	% DUI Of Total	Ave. BAC	DUI Involving Drugs	% DUI Involving Drugs
Lincoln County	278	137	49.28%	0.145	17	12.41%
Afton PD	12	6	50.00%	0.217		
Alpine PD	25	18	72.00%	0.136	1	5.56%
Cokeville PD	12	1	8.33%	0.190		
Diamondville PD	19	4	21.05%	0.153		
Kemmerer PD	90	45	50.00%	0.140	3	6.67%
La Barge PD	11	3	27.27%	0.165		
Lincoln SO	78	36	46.15%	0.137	7	19.44%
Other	1	1	100.00%	0.215		
WHP	30	23	76.67%	0.139	6	26.09%

Traffic Crashes

County Department	Traffic Crashes	Alcohol Involved	% Alcohol Involved	Average BAC	Drugs Involved	% Drugs Involved
Lincoln County	15	14	93.33%	0.189	2	13.33%
Afton PD	1	1	100.00%	0.240		
Alpine PD						
Cokeville PD						
Diamondville PD						
Kemmerer PD	3	3	100.00%	0.174		
La Barge PD						
Lincoln SO	8	7	87.50%		2	25.00%
Other						
WHP	3	3	100.00%	0.170		

Underage DUI Arrests

County Department	DUI Offenses	Underage Offenses	% DUI Of Total	Ave. BAC	Drugs Involved	% DUI Drugs Inv.
Lincoln County	137	6	4.38%	0.125	1	16.67%
Afton PD	6					
Alpine PD	18					
Cokeville PD	1					
Diamondville PD	4					
Kemmerer PD	45	1		0.129		
La Barge PD	3		0.00%			
Lincoln SO	36	2	5.56%			
Other	1					
WHP	23	3	13.04%	0.120	1	33.33%

Alcohol and Drug Involvement

Total Offenses

County Department	Total Offenses	Number Involving Alcohol	Percent Involving Alcohol	Number Involving Drugs	Percent Involving Drugs
Lincoln County	278	188	67.63%	48	17.27%
Afton PD	12	6	50.00%	2	16.67%
Alpine PD	25	24	96.00%	4	16.00%
Cokeville PD	12	1	8.33%	4	33.33%
Diamondville PD	19	9	47.37%	5	26.32%
Kemmerer PD	90	71	78.89%	6	6.67%
La Barge PD	11	7	63.64%	2	18.18%
Lincoln SO	78	50	64.10%	13	16.67%
Other	1	1	100.00%		
WHP	30	19	63.33%	12	40.00%

Felony Offenses

County Department	Felony Offenses	Number Involving Alcohol	Percent Involving Alcohol	Number Involving Drugs	Percent Involving Drugs
Lincoln County	22	6	27.27%	9	40.91%
Afton PD	2				
Alpine PD					
Cokeville PD	4			4	100.00%
Diamondville PD					
Kemmerer PD	2	1	50.00%	1	50.00%
La Barge PD	1				
Lincoln SO	11	5	45.45%	2	18.18%
Other					
WHP	2			2	100.00%

Misdemeanor Offenses

County Department	Misdemeanor Offenses	Number Involving Alcohol	Percent Involving Alcohol	Number Involving Drugs	Percent Involving Drugs
Lincoln County	242	172	71.07%	38	15.70%
Afton PD	9	6	66.67%	1	11.11%
Alpine PD	25	24	96.00%	4	
Cokeville PD	8	1	12.50%		0.00%
Diamondville PD	17	8	47.06%	5	
Kemmerer PD	78	64	82.05%	4	5.13%
La Barge PD	10	7	70.00%	2	20.00%
Lincoln SO	65	42	64.62%	11	16.92%
Other	1	1	100.00%		0.00%
WHP	29	19	65.52%	11	37.93%

Domestic Violence

County Department	Domestic Violence Offenses	Number Involving Alcohol	Percent Involving Alcohol	Number Involving Drugs	Percent Involving Drugs
Lincoln County	23	13	56.52%	1	4.35%
Afton PD	1				
Alpine PD	2	1	50.00%	1	50.00%
Cokeville PD					
Diamondville PD					
Kemmerer PD	7	3	42.86%		
La Barge PD	2	2	100.00%		
Lincoln SO	11	7	63.64%		
Other					
WHP					

Resisting Arrest

County Department	Resisting Arrest Offenses	Number Involving Alcohol	Percent Involving Alcohol	Number Involving Drugs	Percent Involving Drugs
Lincoln County	2	1	50.00%	0	
Afton PD					
Alpine PD					
Cokeville PD					
Diamondville PD					
Kemmerer PD	1	1	100.00%		
La Barge PD					
Lincoln SO	1				
Other					
WHP					

Assault

County Department	Assault Offenses	Number Involving Alcohol	Percent Involving Alcohol	Number Involving Drugs	Percent Involving Drugs
Lincoln County	24	12	50.00%	4	16.67%
Afton PD	2				
Alpine PD	4	4	100.00%	2	50.00%
Cokeville PD	1				
Diamondville PD	1				
Kemmerer PD	5	3	60.00%	1	20.00%
La Barge PD	1	1	100.00%		
Lincoln SO	10	4	40.00%	1	10.00%
Other					
WHP					

Location of Alcohol Consumption and Point of Sale by Department

Department	Alcohol Involved	Location of Consumption						Point of Sale					
		Home	Bar	Party	Car	Other	No Response	Home	Bar	Drive Up	Party	Liquor Store	No Response
Afton PD	6	2	2			1	1		2				4
Alpine PD	24	5	13		2	2	1	5	14				4
Cokeville PD	1	1						1					
Diamondville PD	9	1	2		1	5			2			1	
Kemmerer PD	71	8	18	1		5	36	6	20				42
La Barge PD	7	3	2		1	1		1	2			2	
Lincoln SO	50	5	14	5	3	8	4		11			5	16
Other	1						1						1
WHP	19	3	7	1	1	1	3	1	7		1	1	4
Lincoln County													
Totals	188	28	58	7	8	23	46	14	58	0	1	9	71

Location of Alcohol Consumption

Dept.	Bar Name	Number of Reports
Afton PD	Cowboy Bar	1
	Outlaw	1
Alpine PD	Bull Moose	11
Diamondville PD	Stock Exchange	1
Kemmerer PD	Eagle's	1
	Gridiron	7
	Grumpy's	2
	Stock Exchange	6
La Barge PD	Eagle's	2
Lincoln SO	Bull Moose	3
	Dad's	2
	Stock Exchange	2
	Tavern on the Grey	1
WHP	Bull Moose	3
	Dad's	1
	Gridiron	1
	Outlaw	1

* Total of percents in Location of Consumption and Point of Sale categories may exceed 100% due to single arrests involving more than one location or point of sale.

Natrona County Arrests
January 1, 2010 - December 31, 2010

Numbers by Department

County	Total Offenses	Misdemeanor	Felony	Domestic Violence	Resist Arrest	Assault	Public Intox	Alcohol Involved	Drugs Involved	Residency			Female	Male	Unknown Gender	Average Age
										In County	Other WY	Out of State				
Natrona County	2641	2183	215	120	40	59	520	1602	272	2105	130	174	593	1950	98	32.97
Casper PD	1866	1534	160	90	33	44	454	1141	198	1508	94	121	449	1355	62	32.67
Evansville PD	86	76	2	3	1	1	7	36	5	71	5	7	19	67	0	31.28
Midwest PD	3	3			1			3		3				3	0	50.33
Mills PD	266	217	13	7	3	7	29	149	24	203	5	10	42	197	27	34.88
Natrona SO	286	235	29	14		7	22	181	20	226	17	18	63	216	7	33.67
Other	37	26	7	5			8	17	12	28		4	7	28	2	29.07
WHP	97	92	4	1	2			75	13	66	9	14	13	84	0	33.41

Percents by Department *

County	Total Offenses	Misdemeanor	Felony	Domestic Violence	Resist Arrest	Assault	Public Intox	Alcohol Involved	Drugs Involved	Residency			Female	Male	Unkown Gender
										In County	Other WY	Out of State			
Natrona County	2641	82.66%	8.14%	4.54%	1.51%	2.23%	19.69%	60.66%	10.30%	79.70%	4.92%	6.59%	22.45%	73.84%	3.71%
Casper PD	1866	82.21%	8.57%	4.82%	1.77%	2.36%	24.33%	61.15%	10.61%	80.81%	5.04%	6.48%	24.06%	72.62%	3.32%
Evansville PD	86	88.37%	2.33%	3.49%	1.16%	1.16%	8.14%	41.86%	5.81%	82.56%	5.81%	8.14%	22.09%	77.91%	0.00%
Midwest PD	3	100.00%	0.00%	0.00%	33.33%	0.00%	0.00%	100.00%	0.00%	100.00%	0.00%	0.00%	0.00%	100.00%	0.00%
Mills PD	266	81.58%	4.89%	2.63%	1.13%	2.63%	10.90%	56.02%	9.02%	76.32%	1.88%	3.76%	15.79%	74.06%	10.15%
Natrona SO	286	82.17%	10.14%	4.90%	0.00%	2.45%	7.69%	63.29%	6.99%	79.02%	5.94%	6.29%	22.03%	75.52%	2.45%
Other	37	70.27%	18.92%	13.51%	0.00%	0.00%	21.62%	45.95%	32.43%	75.68%	0.00%	10.81%	18.92%	75.68%	5.41%
WHP	97	94.85%	4.12%	1.03%	2.06%	0.00%	0.00%	77.32%	13.40%	68.04%	9.28%	14.43%	13.40%	86.60%	0.00%

* Total percents may not equal 100 due to lack of information, or a single arrest involving multiple crimes.

MIP Arrests

County Department	DUI Offenses	MIP Arrests	% MIP to DUI	Average MIP BAC
Natrona County	798	53	6.64%	0.137
Casper PD	477	37	7.76%	0.131
Evansville PD	16	2	12.50%	0.220
Midwest PD	1			
Mills PD	101	4	3.96%	
Natrona SO	126	7	5.56%	0.166
Other	7			
WHP	70	3	4.29%	0.120

Meth, Drugs & Public Intoxication

County Department	Total Offenses	Meth Involved	Drugs Involved	Public Intox.	Pub. Intox. Ave. BAC
Natrona County	2641	93	272	520	0.219
Casper PD	1866	63	198	454	0.220
Evansville PD	86	1	5	7	0.090
Midwest PD	3				
Mills PD	266	13	24	29	0.170
Natrona SO	286	8	20	22	0.209
Other	37	4	12	8	0.207
WHP	97	4	13		

DUI Arrests

County Department	Total Offenses	DUI Offenses	% DUI Of Total	Ave. BAC	DUI Involving Drugs	% DUI Involving Drugs
Natrona County	2641	798	30.22%	0.157	78	9.77%
Casper PD	1866	477	25.56%	0.148	54	11.32%
Evansville PD	86	16	18.60%	0.170	2	12.50%
Midwest PD	3	1	33.33%			
Mills PD	266	101	37.97%	0.138	6	5.94%
Natrona SO	286	126	44.06%	0.189	8	6.35%
Other	37	7	18.92%	0.170	1	14.29%
WHP	97	70	72.16%	0.179	7	10.00%

Traffic Crashes

County Department	Traffic Crashes	Alcohol Involved	% Alcohol Involved	Average BAC	Drugs Involved	% Drugs Involved
Natrona County	142	112	78.87%	0.161	24	16.90%
Casper PD	104	80	76.92%	0.159	17	16.35%
Evansville PD	6	5	83.33%	0.139	2	33.33%
Midwest PD						
Mills PD	8	5	62.50%	0.160	1	12.50%
Natrona SO	11	10	90.91%		2	18.18%
Other	2	1	50.00%		1	50.00%
WHP	11	11	100.00%	0.172	1	9.09%

Underage DUI Arrests

County Department	DUI Offenses	Underage Offenses	% DUI Of Total	Ave. BAC	Drugs Involved	% DUI Drugs Inv.
Natrona County	798	58	7.27%	0.121	8	13.79%
Casper PD	477	44	9.22%	0.116	6	13.64%
Evansville PD	16	3	18.75%	0.186	1	33.33%
Midwest PD	1					
Mills PD	101	4	3.96%	0.130		
Natrona SO	126	6	4.76%		1	16.67%
Other	7					
WHP	70	1	1.43%	0.128		

Alcohol and Drug Involvement

Total Offenses

County Department	Total Offenses	Number Involving Alcohol	Percent Involving Alcohol	Number Involving Drugs	Percent Involving Drugs
Natrona County	2641	1602	60.66%	272	10.30%
Casper PD	1866	1141	61.15%	198	10.61%
Evansville PD	86	36	41.86%	5	5.81%
Midwest PD	3	3	100.00%		
Mills PD	266	149	56.02%	24	9.02%
Natrona SO	286	181	63.29%	20	6.99%
Other	37	17	45.95%	12	32.43%
WHP	97	75	77.32%	13	13.40%

Domestic Violence

County Department	Domestic Violence Offenses	Number Involving Alcohol	Percent Involving Alcohol	Number Involving Drugs	Percent Involving Drugs
Natrona County	120	61	50.83%	7	5.83%
Casper PD	90	48	53.33%	6	6.67%
Evansville PD	3	1	33.33%		
Midwest PD					
Mills PD	7	3	42.86%		
Natrona SO	14	7	50.00%		
Other	5	2	40.00%	1	20.00%
WHP	1				

Felony Offenses

County Department	Felony Offenses	Number Involving Alcohol	Percent Involving Alcohol	Number Involving Drugs	Percent Involving Drugs
Natrona County	215	58	26.98%	64	29.77%
Casper PD	160	45	28.13%	46	28.75%
Evansville PD	2				
Midwest PD					
Mills PD	13	5	38.46%	4	30.77%
Natrona SO	29	7	24.14%	6	20.69%
Other	7			5	71.43%
WHP	4	1	25.00%	3	75.00%

Resisting Arrest

County Department	Resisting Arrest Offenses	Number Involving Alcohol	Percent Involving Alcohol	Number Involving Drugs	Percent Involving Drugs
Natrona County	40	28	70.00%	7	17.50%
Casper PD	33	23	69.70%	7	21.21%
Evansville PD	1	1	100.00%		
Midwest PD	1	1	100.00%		
Mills PD	3	2	66.67%		
Natrona SO					
Other					
WHP	2	1	50.00%		

Misdemeanor Offenses

County Department	Misdemeanor Offenses	Number Involving Alcohol	Percent Involving Alcohol	Number Involving Drugs	Percent Involving Drugs
Natrona County	2183	1415	64.82%	185	8.47%
Casper PD	1534	1000	65.19%	136	8.87%
Evansville PD	76	31	40.79%	3	3.95%
Midwest PD	3	3	100.00%		
Mills PD	217	132	60.83%	17	7.83%
Natrona SO	235	162	68.94%	11	4.68%
Other	26	15	57.69%	6	23.08%
WHP	92	72	78.26%	12	13.04%

Assault

County Department	Assault Offenses	Number Involving Alcohol	Percent Involving Alcohol	Number Involving Drugs	Percent Involving Drugs
Natrona County	59	32	54.24%	4	6.78%
Casper PD	44	24	54.55%	4	9.09%
Evansville PD	1				
Midwest PD					
Mills PD	7	2	28.57%	1	14.29%
Natrona SO	7	6	85.71%		
Other					
WHP					

Location of Alcohol Consumption and Point of Sale by Department

Department	Location of Consumption							Point of Sale					
	Alcohol Involved	Home	Bar	Party	Car	Other	No Response	Home	Bar	Drive Up	Party	Liquor Store	No Response
Casper PD	1141	229	305	85	26	108	238	114	277		53	65	357
Evansville PD	36	6	7	1		1	8	2	6		1		9
Midwest PD	3		2						2				
Mills PD	149	32	64	7	7		13	13	50		6	3	16
Natrona SO	181	35	73	9	7	5	23	11	63	1	6	11	34
Other	17	2	6	1		1	2	1	3		1	1	3
WHP	75	9	24	2	16	13	5	2	32		1	13	15
Natrona County Totals	1602	313	481	105	56	128	289	143	433	1	68	93	434

Department	Bar Name	No. of Reports
Casper PD	3 Crowns	1
	Alibi	27
	Armor's	1
	Backdoor Lounge	1
	Baja	1
	Beacon	9
	Butch's	17
	Chatter's	2
	Cowboy's	4
	CY Liquors	4
	Downtown Grill	2
	Drake's	5
	Eagle's	3
	El Marko	7
	Fire Rock	2
	Fireside	15
	Guadalajara	1
	Hideaway	1
	Hooter's	1
	Hoseshoe	1
	Johnny O's	3
	Moonlight	33
	Old Chicago	5
	Paradise Liquors	3
	Parkway Plaza	1
	Poor Boys	1

Dept.	Bar Name	No. of Reports
Casper	Royal Inn	1
PD	Sandbar	51
	Sanford's	6
	Sidelines	33
	Sunrise Bowling	2
	Taylor's	1
	TJ's	2
	VFW	6
	Vintage	2
	Wonder Bar	14
Evansville	Butch's	4
PD	Horseshoe	1
	Taylor's	1
Midwest	Prairie Schooner	1
PD	Rimrock	1
Mills PD	Alibi	2
	Baja	1
	Beacon	25
	Butch's	2
	Chatters	1
	Cowboy's	9
	Eagle	1
	Fireside	1
	Hideaway	1
	Johnny O's	1
	OT	3
	Sandbar	3
	Sidelines	1

Dept.	Bar Name	No. of Reports
Mills PD	Taylor's	2
	VFW	8
Natrona SO	Alibi	5
	American Legion	1
	Beacon	5
	Butch's	6
	Chatter's	3
	Cowboy's	22
	Drake's	1
	El Marko	1
	Hideaway	2
	Moonlight	3
	Old Chicago	1
	On the Border	1
	Sandbar	2
	Sidelines	10
	Taylor's	2
Other	Alibi	1
	Butch's	1
WHP	Beacon	4
	Butch's	1
	Cowboy's	4
	Drake's	2
	Firerock	1
	Horseshoe	1
	Old Chicago	1
	Sandbar	2
	Sidelines	2
	VFW	1

* Total of percents in Location of Consumption and Point of Sale categories may exceed 100% due to single arrests involving more than one location or point of sale.

Niobrara County Arrests
January 1, 2010 - December 31, 2010

Numbers by Department

County	Total Offenses	Misde-meanor	Felony	Domestic Violence	Resist Arrest	Assault	Public Intox	Alcohol Involved	Drugs Involved	Traffic Crash	Female	Male	Unknown Gender	Average Age
Niobrara County	52	37	4	8	4	5	3	34	6	0	12	37	3	33.15
Lusk PD	44	32	3	8	4	5	3	28	5		12	30	2	32.45
Niobrara SO	2	4	1						1			2	0	39.50
WHP	6	1						6				5	1	29.50

Percents by Department *

County	Total Offenses	Misde-meanor	Felony	Domestic Violence	Resist Arrest	Assault	Public Intox	Alcohol Involved	Drugs Involved	Traffic Crash	Female	Male	Unkown Gender
Niobrara County	52	71.15%	7.69%	15.38%	7.69%	9.62%	5.77%	65.38%	11.54%	0.00%	23.08%	71.15%	5.77%
Lusk PD	44	72.73%	6.82%	18.18%	9.09%	11.36%	6.82%	63.64%	11.36%	0.00%	27.27%	68.18%	4.55%
Niobrara SO	2	200.00%	50.00%	0.00%	0.00%	0.00%	0.00%	0.00%	50.00%	0.00%	0.00%	100.00%	0.00%
WHP	6	16.67%	0.00%	0.00%	0.00%	0.00%	0.00%	100.00%	0.00%	0.00%	0.00%	83.33%	16.67%

* Total percents may not equal 100 due to lack of information, or a single arrest involving multiple crimes.

MIP Arrests

County Department	DUI Offenses	MIP Arrests	% MIP to DUI	Average MIP BAC
Niobrara County	14	7	50.00%	0.130
Lusk PD	8	7	87.50%	0.130
Niobrara SO				
WHP	6			

DUI Arrests

County Department	Total Offenses	DUI Offenses	% DUI Of Total	Ave. BAC	DUI Involving Drugs	% DUI Involving Drugs
Niobrara County	52	14	26.92%	0.137	1	7.14%
Lusk PD	44	8	18.18%	0.138	1	12.50%
Niobrara SO	2					
WHP	6	6	100.00%	0.137		

Underage DUI Arrests

County Department	DUI Offenses	Underage Offenses	% DUI Of Total	Ave. BAC	Drugs Involved	% DUI Drugs Inv.
Niobrara County	14	1	7.14%	No rpt.	0	
Lusk PD	8	1	12.50%			
Niobrara SO						
WHP	6					

Meth, Drugs & Public Intoxication

County Department	Total Offenses	Meth Involved	Drugs Involved	Public Intox.	Pub. Intox. Ave. BAC
Niobrara County	52	0	6	3	No rpt.
Lusk PD	44		5	3	
Niobrara SO	2		1		
WHP	6				

Traffic Crashes

County Department	Traffic Crashes	Alcohol Involved	% Alcohol Involved	Average BAC	Drugs Involved	% Drugs Involved
Niobrara County	0					
Lusk PD						
Niobrara SO						
WHP						

Alcohol and Drug Involvement

Total Offenses

County Department	Total Offenses	Number Involving Alcohol	Percent Involving Alcohol	Number Involving Drugs	Percent Involving Drugs
Niobrara County	52	34	65.38%		0.00%
Lusk PD	44	28	63.64%		0.00%
Niobrara SO	2		0.00%		
WHP	6	6	100.00%		

Felony Offenses

County Department	Felony Offenses	Number Involving Alcohol	Percent Involving Alcohol	Number Involving Drugs	Percent Involving Drugs
Niobrara County	4	1	25.00%	3	75.00%
Lusk PD	3	1	33.33%	2	66.67%
Niobrara SO	1			1	100.00%
WHP					

Misdemeanor Offenses

County Department	Misdemeanor Offenses	Number Involving Alcohol	Percent Involving Alcohol	Number Involving Drugs	Percent Involving Drugs
Niobrara County	37	26	70.27%	3	8.11%
Lusk PD	32	22	68.75%	3	9.38%
Niobrara SO	1				
WHP	4	4	100.00%		

Domestic Violence

County Department	Domestic Violence Offenses	Number Involving Alcohol	Percent Involving Alcohol	Number Involving Drugs	Percent Involving Drugs
Niobrara County	8	6	75.00%	0	
Lusk PD	8				
Niobrara SO			#DIV/0!		
WHP					

Resisting Arrest

County Department	Resisting Arrest Offenses	Number Involving Alcohol	Percent Involving Alcohol	Number Involving Drugs	Percent Involving Drugs
Niobrara County	4	2	50.00%	0	
Lusk PD	4	2	50.00%		
Niobrara SO					
WHP					

Assault

County Department	Assault Offenses	Number Involving Alcohol	Percent Involving Alcohol	Number Involving Drugs	Percent Involving Drugs
Niobrara County	5	3	60.00%	0	
Lusk PD	5	3			
Niobrara SO					
WHP					

Location of Alcohol Consumption and Point of Sale by Department

Department	Alcohol Involved	Location of Consumption						Point of Sale					
		Home	Bar	Party	Car	Other	No Response	Home	Bar	Drive Up	Party	Liquor Store	No Response
Lusk PD	28	3	3	6			2	3	3		3		2
Niobrara SO													
WHP	6				1							1	
Niobrara County													
Totals	34	3	3	6	1	0	2	3	3	0	3	1	2

Location of Alcohol Consumption

Dept.	Bar Name	Number of Reports
Lusk PD	Silver Dollar	2

* Total of percents in Location of Consumption and Point of Sale categories may exceed 100% due to single arrests involving more than one location or point of sale.

Park County Arrests
January 1, 2010 - December 31, 2010

Numbers by Department

County	Total Offenses	Misde-meanor	Felony	Domestic Violence	Resist Arrest	Assault	Public Intox	Alcohol Involved	Drugs Involved	Traffic Crash	Female	Male	Unknown Gender	Average Age
Park County	648	450	94	45	14	22	47	369	66	29	155	481	12	34.58
Cody PD	326	227	30	23	7	12	36	197	33	14	88	232	6	32.60
Other	35	13	19					10	5	1	15	20	0	28.45
Park SO	121	83	30	12	1	2	1	42	11	5	24	97	0	33.39
Powell PD	152	114	14	10	6	8	10	109	16	6	26	121	5	28.22
WHP	14	13	1					11	1	3	2	11	1	40.30

Percents by Department *

County	Total Offenses	Misde-meanor	Felony	Domestic Violence	Resist Arrest	Assault	Public Intox	Alcohol Involved	Drugs Involved	Traffic Crash	Female	Male	Unkown Gender
Park County	648	69.44%	14.51%	6.94%	2.16%	3.40%	7.25%	56.94%	10.19%	4.48%	23.92%	74.23%	1.85%
Cody PD	326	69.63%	9.20%	7.06%	2.15%	3.68%	11.04%	60.43%	10.12%	4.29%	26.99%	71.17%	1.84%
Other	35	37.14%	54.29%	0.00%	0.00%	0.00%	0.00%	28.57%	14.29%	2.86%	42.86%	57.14%	0.00%
Park SO	121	68.60%	24.79%	9.92%	0.83%	1.65%	0.83%	34.71%	9.09%	4.13%	19.83%	80.17%	0.00%
Powell PD	152	75.00%	9.21%	6.58%	3.95%	5.26%	6.58%	71.71%	10.53%	3.95%	17.11%	79.61%	3.29%
WHP	14	92.86%	7.14%	0.00%	0.00%	0.00%	0.00%	78.57%	7.14%	21.43%	14.29%	78.57%	7.14%

* Total percents may not equal 100 due to lack of information, or a single arrest involving multiple crimes.

MIP Arrests

County Department	DUI Offenses	MIP Arrests	% MIP to DUI	Average MIP BAC
Park County	226	26	11.50%	0.090
Cody PD	111	12	10.81%	0.120
Other	7			
Park SO	26	7	26.92%	0.014
Powell PD	70	7	10.00%	0.068
WHP	12			

DUI Arrests

County Department	Total Offenses	DUI Offenses	% DUI Of Total	Ave. BAC	DUI Involving Drugs	% DUI Involving Drugs
Park County	648	226	34.88%	0.150	24	10.62%
Cody PD	326	111	34.05%	0.141	14	12.61%
Other	35	7	20.00%	0.176		
Park SO	121	26	21.49%	0.163	5	19.23%
Powell PD	152	70	46.05%	0.157	4	5.71%
WHP	14	12	85.71%	0.185	1	8.33%

Underage DUI Arrests

County Department	DUI Offenses	Underage Offenses	% DUI Of Total	Ave. BAC	Drugs Involved	% DUI Drugs Inv.
Park County	226	21	9.29%	0.130	6	28.57%
Cody PD	111	8	7.21%	0.121	2	25.00%
Other	7					
Park SO	26	2	7.69%	0.084	2	100.00%
Powell PD	70	11	15.71%	0.140	2	18.18%
WHP	12					

Meth, Drugs & Public Intoxication

County Department	Total Offenses	Meth Involved	Drugs Involved	Public Intox.	Pub. Intox. Ave. BAC
Park County	648	9	66	47	0.227
Cody PD	326	6	33	36	0.204
Other	35		5		
Park SO	121	2	11	1	
Powell PD	152	1	16	10	0.271
WHP	14		1		

Traffic Crashes

County Department	Traffic Crashes	Alcohol Involved	% Alcohol Involved	Average BAC	Drugs Involved	% Drugs Involved
Park County	29	24	82.76%	0.126	6	20.69%
Cody PD	14	12	85.71%	0.114	2	14.29%
Other	1	1	100.00%			
Park SO	5	4	80.00%	0.150	1	20.00%
Powell PD	6	5	83.33%	0.181	2	33.33%
WHP	3	2	66.67%		1	33.33%

Alcohol and Drug Involvement

Total Offenses

County Department	Total Offenses	Number Involving Alcohol	Percent Involving Alcohol	Number Involving Drugs	Percent Involving Drugs
Park County	648	369	56.94%	66	10.19%
Cody PD	326	197	60.43%	33	10.12%
Other	35	10	28.57%	5	14.29%
Park SO	121	42	34.71%	11	9.09%
Powell PD	152	109	71.71%	16	10.53%
WHP	14	11	78.57%	1	7.14%

Domestic Violence

County Department	Domestic Violence Offenses	Number Involving Alcohol	Percent Involving Alcohol	Number Involving Drugs	Percent Involving Drugs
Park County	45	27	60.00%	1	2.22%
Cody PD	23	15	65.22%		
Other					
Park SO	12	8	66.67%		
Powell PD	10	4	40.00%	1	10.00%
WHP					

Felony Offenses

County Department	Felony Offenses	Number Involving Alcohol	Percent Involving Alcohol	Number Involving Drugs	Percent Involving Drugs
Park County	94	19	20.21%	14	14.89%
Cody PD	30	4	13.33%	5	16.67%
Other	19	1	5.26%	4	21.05%
Park SO	30	7	23.33%	2	6.67%
Powell PD	14	7	50.00%	3	21.43%
WHP	1				

Resisting Arrest

County Department	Resisting Arrest Offenses	Number Involving Alcohol	Percent Involving Alcohol	Number Involving Drugs	Percent Involving Drugs
Park County	14	12	85.71%	1	7.14%
Cody PD	7	7	100.00%		
Other					
Park SO	1				
Powell PD	6	5	83.33%	1	16.67%
WHP					

Misdemeanor Offenses

County Department	Misdemeanor Offenses	Number Involving Alcohol	Percent Involving Alcohol	Number Involving Drugs	Percent Involving Drugs
Park County	450	295	65.56%	43	9.56%
Cody PD	227	153	67.40%	22	9.69%
Other	13	7	53.85%		
Park SO	83	34	40.96%	9	10.84%
Powell PD	114	90	78.95%	11	9.65%
WHP	13	11	84.62%	1	7.69%

Assault

County Department	Assault Offenses	Number Involving Alcohol	Percent Involving Alcohol	Number Involving Drugs	Percent Involving Drugs
Park County	22	11	50.00%	2	9.09%
Cody PD	12	5	41.67%	1	8.33%
Other					
Park SO	2	1	50.00%		
Powell PD	8	5	62.50%	1	12.50%
WHP					

Location of Alcohol Consumption and Point of Sale by Department

Department	Location of Consumption							Point of Sale					
	Alcohol Involved	Home	Bar	Party	Car	Other	No Response	Home	Bar	Drive Up	Party	Liquor Store	No Response
Cody PD	197	51	86	10	4	12	11	23	81	2	6	15	16
Other	10	3	5						3				1
Park SO	42	19	6		9	1	2	13	8	2		5	4
Powell PD	109	21	46	14	2	8	12	13	44	1	10	1	21
WHP	11	2	2	1	3	1	1	1	4		1	1	1
Park County Totals	369	96	145	25	18	22	26	50	140	5	17	22	43

Location of Alcohol Consumption

Dept.	Bar Name	Number of Reports
Cody PD	3 H	1
	Brewgard's	1
	Grant Village	1
	Irma	4
	K Bar	1
	Lavina's	1
	Silver Dollar	51
	VFW	2
	Whiskey River	12
Other	Silver Dollar	1
Park SO	Lavina's	1
Powell PD	American Legion	3
	Back Street Pub	2
	Brewgard's	1
	Hansel & Gretel's	5
	K Bar	5
	Lavina's	9
	Peaks	1
	Red Stag	1
	Table 7	4
	VFW	1
WHP	Belfry Mountain	1
	Silver Dollar	1

* Total of percents in Location of Consumption and Point of Sale categories may exceed 100% due to single arrests involving more than one location or point of sale.

Platte County Arrests
January 1, 2010 - December 31, 2010

Numbers by Department

County	Total Offenses	Misde-meanor	Felony	Domestic Violence	Resist Arrest	Assault	Public Intox	Alcohol Involved	Drugs Involved	Traffic Crash	Female	Male	Unknown Gender	Average Age
Platte County	101	90	4	11	2	5	3	73	23	6	23	77	1	33.83
Other	6	6		2				5	4		2	4	0	26.00
Platte SO	61	57	2	4	1		1	42	14	2	15	46	0	35.45
State Parks	7	6	1	1		3		5	3	1	2	5	0	22.50
Wheatland PD	25	19	1	4	1	2	2	19	2	2	3	21	1	33.14
WHP	2	2						2		1	1	1	0	54.00

Percents by Department *

County	Total Offenses	Misde-meanor	Felony	Domestic Violence	Resist Arrest	Assault	Public Intox	Alcohol Involved	Drugs Involved	Traffic Crash	Female	Male	Unkown Gender
Platte County	101	89.11%	3.96%	10.89%	1.98%	4.95%	2.97%	72.28%	22.77%	5.94%	22.77%	76.24%	0.99%
Other	6	100.00%	0.00%	33.33%	0.00%	0.00%	0.00%	83.33%	66.67%	0.00%	33.33%	66.67%	0.00%
Platte SO	61	93.44%	3.28%	6.56%	1.64%	0.00%	1.64%	68.85%	22.95%	3.28%	24.59%	75.41%	0.00%
State Parks	7	85.71%	14.29%	14.29%	0.00%	42.86%	0.00%	71.43%	42.86%	14.29%	28.57%	71.43%	0.00%
Wheatland PD	25	76.00%	4.00%	16.00%	4.00%	8.00%	8.00%	76.00%	8.00%	8.00%	12.00%	84.00%	4.00%
WHP	2	100.00%	0.00%	0.00%	0.00%	0.00%	0.00%	100.00%	0.00%	50.00%	50.00%	50.00%	0.00%

* Total percents may not equal 100 due to lack of information, or a single arrest involving multiple crimes.

MIP Arrests

County Department	DUI Offenses	MIP Arrests	% MIP to DUI	Average MIP BAC
Platte County	47	0		
Other				
Platte SO	38			
State Parks	1			
Wheatland PD	6			
WHP	2			

Meth, Drugs & Public Intoxication

County Department	Total Offenses	Meth Involved	Drugs Involved	Public Intox.	Pub. Intox. Ave. BAC
Platte County	101	3	23	3	0.1300
Other	6		4		
Platte SO	61	3	14	1	0.1500
State Parks	7		3		
Wheatland PD	25		2	2	0.1100
WHP	2				

DUI Arrests

County Department	Total Offenses	DUI Offenses	% DUI Of Total	Ave. BAC	DUI Involving Drugs	% DUI Involving Drugs
Platte County	101	47	46.53%	0.146	12	25.53%
Other	6		0.00%			
Platte SO	61	38	62.30%	0.140	11	28.95%
State Parks	7	1	14.29%			
Wheatland PD	25	6	24.00%	0.217	1	16.67%
WHP	2	2	100.00%	0.100		

Traffic Crashes

County Department	Traffic Crashes	Alcohol Involved	% Alcohol Involved	Average BAC	Drugs Involved	% Drugs Involved
Platte County	6	6	100.00%	0.193	1	16.67%
Other						
Platte SO	2	2	100.00%	0.210		
State Parks	1	1	100.00%			
Wheatland PD	2	2	100.00%	0.230	1	50.00%
WHP	1	1	100.00%	0.100		

Underage DUI Arrests

County Department	DUI Offenses	Underage Offenses	% DUI Of Total	Ave. BAC	Drugs Involved	% DUI Drugs Inv.
Platte County	47	5	10.64%	0.061	2	40.00%
Other						
Platte SO	38	5	13.16%	0.061	2	40.00%
State Parks	1					
Wheatland PD	6					
WHP	2					

Alcohol and Drug Involvement

Total Offenses

County Department	Total Offenses	Number Involving Alcohol	Percent Involving Alcohol	Number Involving Drugs	Percent Involving Drugs
Platte County	101	73	72.28%	23	22.77%
Other	6	5	83.33%	4	66.67%
Platte SO	61	42	68.85%	14	22.95%
State Parks	7	5	71.43%	3	42.86%
Wheatland PD	25	19	76.00%	2	8.00%
WHP	2	2	100.00%		

Domestic Violence

County Department	Domestic Violence Offenses	Number Involving Alcohol	Percent Involving Alcohol	Number Involving Drugs	Percent Involving Drugs
Platte County	11	7	63.64%	0	
Other	2	1	50.00%		
Platte SO	4	2	50.00%		
State Parks	1				
Wheatland PD	4	4	100.00%		
WHP					

Felony Offenses

County Department	Felony Offenses	Number Involving Alcohol	Percent Involving Alcohol	Number Involving Drugs	Percent Involving Drugs
Platte County	4	2	50.00%	0	
Other					
Platte SO	2	1	50.00%		
State Parks	1	1	100.00%		
Wheatland PD	1				
WHP					

Resisting Arrest

County Department	Resisting Arrest Offenses	Number Involving Alcohol	Percent Involving Alcohol	Number Involving Drugs	Percent Involving Drugs
Platte County	2	1	50.00%	0	
Other					
Platte SO	1	1	100.00%		
State Parks					
Wheatland PD	1				
WHP					

Misdemeanor Offenses

County Department	Misdemeanor Offenses	Number Involving Alcohol	Percent Involving Alcohol	Number Involving Drugs	Percent Involving Drugs
Platte County	90	68	75.56%	23	25.56%
Other	6	5	83.33%	4	66.67%
Platte SO	57	40	70.18%	14	24.56%
State Parks	6	4	66.67%	3	50.00%
Wheatland PD	19	17	89.47%	2	10.53%
WHP	2	2	100.00%		

Assault

County Department	Assault Offenses	Number Involving Alcohol	Percent Involving Alcohol	Number Involving Drugs	Percent Involving Drugs
Platte County	5	2	40.00%	0	
Other					
Platte SO					
State Parks	3	1	33.33%		
Wheatland PD	2	1	50.00%		
WHP					

Location of Alcohol Consumption and Point of Sale by Department

Department	Alcohol Involved	Location of Consumption						Point of Sale					
		Home	Bar	Party	Car	Other	No Response	Home	Bar	Drive Up	Party	Liquor Store	No Response
Other	5	1		4							4	1	
Platte SO	42	9	15	2	5	6	5	5	14	2	1	9	8
State Parks	5	2				3		1					3
Wheatland PD	19	9	4		1	1		4	5			3	2
WHP	2		1		1				1				1
Platte County Totals	73	21	20	6	7	10	5	10	20	2	5	13	14

Location of Alcohol Consumption

Dept.	Bar Name	Number of Reports
Platte SO	Buffalo Lodge	1
	Commodore	7
	Kelly's	2
	Mickey's	1
	Sal's	2
	Vimbo's	1
Wheatland PD	Commodore	2
	Moose Lodge	1
WHP	Whiskey Gultch	1

* Total of percents in Location of Consumption and Point of Sale categories may exceed 100% due to single arrests involving more than on location or point of sale.

Sheridan County Arrests
January 1, 2010 - December 31, 2010

Numbers by Department

County	Total Offenses	Misde-meanor	Felony	Domestic Violence	Resist Arrest	Assault	Public Intox	Alcohol Involved	Drugs Involved	Traffic Crash	Female	Male	Unknown Gender	Average Age
Sheridan County	603	499	56	41	14	18	70	452	74	36	138	455	10	34.31
DCI	4		3					1	3		1	3	0	30.50
Other	14	9	4				4	9	3			13	1	32.00
Sheridan PD	398	344	21	32	12	12	62	313	47	13	97	296	5	34.66
Sheridan SO	156	118	27	9	2	6	3	105	18	13	35	119	2	3.33
WHP	31	28	1				1	24	3	10	5	24	2	36.14

Percents by Department *

County	Total Offenses	Misde-meanor	Felony	Domestic Violence	Resist Arrest	Assault	Public Intox	Alcohol Involved	Drugs Involved	Traffic Crash	Female	Male	Unkown Gender
Sheridan County	603	82.75%	9.29%	6.80%	2.32%	2.99%	11.61%	74.96%	12.27%	5.97%	22.89%	75.46%	1.66%
DCI	4	0.00%	75.00%	0.00%	0.00%	0.00%	0.00%	25.00%	75.00%	0.00%	25.00%	75.00%	0.00%
Other	14	64.29%	28.57%	0.00%	0.00%	0.00%	28.57%	64.29%	21.43%	0.00%	0.00%	92.86%	7.14%
Sheridan PD	398	86.43%	5.28%	8.04%	3.02%	3.02%	15.58%	78.64%	11.81%	3.27%	24.37%	74.37%	1.26%
Sheridan SO	156	75.64%	17.31%	5.77%	1.28%	3.85%	1.92%	67.31%	11.54%	8.33%	22.44%	76.28%	1.28%
WHP	31	90.32%	3.23%	0.00%	0.00%	0.00%	3.23%	77.42%	9.68%	32.26%	16.13%	77.42%	6.45%

* Total percents may not equal 100 due to lack of information, or a single arrest involving multiple crimes.

MIP Arrests

County Department	DUI Offenses	MIP Arrests	% MIP to DUI	Average MIP BAC
Sheridan County	268	10	3.73%	0.149
DCI				
Other	5			
Sheridan PD	174	3	1.72%	0.129
Sheridan SO	67	7	10.45%	0.180
WHP	22			

DUI Arrests

County Department	Total Offenses	DUI Offenses	% DUI Of Total	Ave. BAC	DUI Involving Drugs	% DUI Involving Drugs
Sheridan County	603	268	44.44%	0.166	22	8.21%
DCI	4					
Other	14	5	35.71%	0.191	1	20.00%
Sheridan PD	398	174	43.72%	0.166	17	9.77%
Sheridan SO	156	67	42.95%	0.140	4	5.97%
WHP	31	22	70.97%			

Underage DUI Arrests

County Department	DUI Offenses	Underage Offenses	% DUI Of Total	Ave. BAC	Drugs Involved	% DUI Drugs Inv.
Sheridan County	268	19	7.09%	0.109	4	21.05%
DCI						
Other	5	1	20.00%	0.077		
Sheridan PD	174	9	5.17%	0.092	3	33.33%
Sheridan SO	67	6	8.96%	0.144	1	
WHP	22	3	13.64%	0.090		

Meth, Drugs & Public Intoxication

County Department	Total Offenses	Meth Involved	Drugs Involved	Public Intox.	Pub. Intox. Ave. BAC
Sheridan County	603	17	74	70	0.200
DCI	4	1	3		
Other	14		3	4	0.182
Sheridan PD	398	8	47	62	0.204
Sheridan SO	156	8	18	3	0.210
WHP	31		3	1	0.1250

Traffic Crashes

County Department	Traffic Crashes	Alcohol Involved	% Alcohol Involved	Average BAC	Drugs Involved	% Drugs Involved
Sheridan County	36	30	83.33%	0.171	5	13.89%
DCI						
Other						
Sheridan PD	13	10	76.92%	0.210	5	38.46%
Sheridan SO	13	13	100.00%	0.160		
WHP	10	7	70.00%	0.123		

Alcohol and Drug Involvement

Total Offenses

County Department	Total Offenses	Number Involving Alcohol	Percent Involving Alcohol	Number Involving Drugs	Percent Involving Drugs
Sheridan County	603	452	74.96%	74	12.27%
DCI	4	1	25.00%	3	75.00%
Other	14	9	64.29%	3	21.43%
Sheridan PD	398	313	78.64%	47	11.81%
Sheridan SO	156	105	67.31%	18	11.54%
WHP	31	24	77.42%	3	9.68%

Domestic Violence

County Department	Domestic Violence Offenses	Number Involving Alcohol	Percent Involving Alcohol	Number Involving Drugs	Percent Involving Drugs
Sheridan County	41	24	58.54%	3	7.32%
DCI					
Other					
Sheridan PD	32	18	56.25%	1	3.13%
Sheridan SO	9	6	66.67%	2	22.22%
WHP					

Felony Offenses

County Department	Felony Offenses	Number Involving Alcohol	Percent Involving Alcohol	Number Involving Drugs	Percent Involving Drugs
Sheridan County	56	14	25.00%	19	33.93%
DCI	3			2	66.67%
Other	4			1	25.00%
Sheridan PD	21	7	33.33%	8	38.10%
Sheridan SO	27	7	25.93%	7	25.93%
WHP	1			1	100.00%

Resisting Arrest

County Department	Resisting Arrest Offenses	Number Involving Alcohol	Percent Involving Alcohol	Number Involving Drugs	Percent Involving Drugs
Sheridan County	14	14	100.00%	0	
DCI					
Other					
Sheridan PD	12	12	100.00%		
Sheridan SO	2	2	100.00%		
WHP					

Misdemeanor Offenses

County Department	Misdemeanor Offenses	Number Involving Alcohol	Percent Involving Alcohol	Number Involving Drugs	Percent Involving Drugs
Sheridan County	499	396	79.36%	48	9.62%
DCI					
Other	9	8	88.89%	2	22.22%
Sheridan PD	344	278	80.81%	35	10.17%
Sheridan SO	118	87	73.73%	10	8.47%
WHP	28	23	82.14%	1	3.57%

Assault

County Department	Assault Offenses	Number Involving Alcohol	Percent Involving Alcohol	Number Involving Drugs	Percent Involving Drugs
Sheridan County	18	11	61.11%	1	5.56%
DCI					
Other					
Sheridan PD	12	6	50.00%	1	8.33%
Sheridan SO	6	5	83.33%		
WHP					

Location of Alcohol Consumption and Point of Sale by Department

Department	Location of Consumption							Point of Sale					
	Alcohol Involved	Home	Bar	Party	Car	Other	No Response	Home	Bar	Drive Up	Party	Liquor Store	No Response
DCI	1	1											
Other	9	2	2			1	4	1	4			2	4
Sheridan PD	313	38	110	13	1	13	106	13	106	2	6	25	112
Sheridan SO	105	14	27	11	4	5	36	3	36		6	11	42
WHP	24	1	7	1	2	3	9		9			4	11
Sheridan County Totals	452	56	146	25	7	22	155	17	155	2	12	42	169

Location of Alcohol Consumption

Dept.	Bar Name	Number of Reports
Other	Rails	1
Sheridan PD	American Legion	2
	Beaver Creek	9
	Buddy's Place	6
	Eagle's	3
	Elk's Club	1
	Mint	12
	My Buddy's Place	3
	OK Corral	2
	Pony	3
	Rails	16
	Rainbow	10
	Rendezvous	3
	Scooter's	1
	Sheridan Center	2
	Sutton's	5
	VFW	1
Willy's	1	
Sheridan SO	Buddy's Place	7
	Crazy Woman	1
	Mint	3
	Mountain Inn	1
	Rails	2
	Rainbow	2
	Rendezvous	3
	Street Dance	1
WHP	Beaver Creek	1
	Last Chance	1
	Trails Inn	1

* Total of percents in Location of Consumption and Point of Sale categories may exceed 100% due to single arrests involving more than one location or point of sale.

Sublette County Arrests
January 1, 2010 - December 31, 2010

Numbers by Department

County	Total Offenses	Misde-meanor	Felony	Domestic Violence	Resist Arrest	Assault	Public Intox	Alcohol Involved	Drugs Involved	Traffic Crash	Female	Male	Unknown Gender	Average Age
Sublette County	258	228	11	15	3	5	33	181	33	8	44	207	7	32.81
Sublette SO	156	136	10	15	3	5	33	109	9	5	25	128	3	32.06
WHP	102	92	1					72	24	3	19	79	4	33.91

Percents by Department *

County	Total Offenses	Misde-meanor	Felony	Domestic Violence	Resist Arrest	Assault	Public Intox	Alcohol Involved	Drugs Involved	Traffic Crash	Female	Male	Unkown Gender
Sublette County	258	88.37%	4.26%	5.81%	1.16%	1.94%	12.79%	70.16%	12.79%	3.10%	17.05%	80.23%	2.71%
Sublette SO	156	87.18%	6.41%	9.62%	1.92%	3.21%	21.15%	69.87%	5.77%	3.21%	16.03%	82.05%	1.92%
WHP	102	90.20%	0.98%	0.00%	0.00%	0.00%	0.00%	70.59%	23.53%	2.94%	18.63%	77.45%	3.92%

* Total percents may not equal 100 due to lack of information, or a single arrest involving multiple crimes.

MIP Arrests

County Department	DUI Offenses	MIP Arrests	% MIP to DUI	Average MIP BAC
Sublette County	128	10	7.81%	0.071
Sublette SO	56	7	12.50%	
WHP	72	3	4.17%	0.071

DUI Arrests

County Department	Total Offenses	DUI Offenses	% DUI Of Total	Ave. BAC	DUI Involving Drugs	% DUI Involving Drugs
Sublette County	258	128	49.61%	0.148	8	6.25%
Sublette SO	156	56	35.90%	0.171	2	3.57%
WHP	102	72	70.59%	0.131	6	8.33%

Underage DUI Arrests

County Department	DUI Offenses	Underage Offenses	% DUI Of Total	Ave. BAC	Drugs Involved	% DUI Drugs Inv.
Sublette County	128	3	2.34%	0.135	0	
Sublette SO	56	3	5.36%	0.135		
WHP	72					

Meth, Drugs & Public Intoxication

County Department	Total Offenses	Meth Involved	Drugs Involved	Public Intox.	Pub. Intox. Ave. BAC
Sublette County	258	2	33	33	0.243
Sublette SO	156	2	9	33	0.243
WHP	102		24		

Traffic Crashes

County Department	Traffic Crashes	Alcohol Involved	% Alcohol Involved	Average BAC	Drugs Involved	% Drugs Involved
Sublette County	8	6	75.00%	0.170	1	12.50%
Sublette SO	5	4	80.00%	0.174		
WHP	3	2	66.67%	0.073	1	33.33%

Alcohol and Drug Involvement

Total Offenses

County Department	Total Offenses	Number Involving Alcohol	Percent Involving Alcohol	Number Involving Drugs	Percent Involving Drugs
Sublette County	258	181	70.16%	33	12.79%
Sublette SO	156	109	69.87%	9	5.77%
WHP	102	72	70.59%	24	23.53%

Felony Offenses

County Department	Felony Offenses	Number Involving Alcohol	Percent Involving Alcohol	Number Involving Drugs	Percent Involving Drugs
Sublette County	11	4	36.36%	1	9.09%
Sublette SO	10	3	30.00%	1	10.00%
WHP	1	1	100.00%		

Misdemeanor Offenses

County Department	Misde- meanor Offenses	Number Involving Alcohol	Percent Involving Alcohol	Number Involving Drugs	Percent Involving Drugs
Sublette County	228	165	72.37%	28	12.28%
Sublette SO	136	100	73.53%	7	5.15%
WHP	92	65	70.65%	21	

Domestic Violence

County Department	Domestic Violence Offenses	Number Involving Alcohol	Percent Involving Alcohol	Number Involving Drugs	Percent Involving Drugs
Sublette County	15	4	26.67%	0	
Sublette SO	15	4	26.67%		
WHP					

Resisting Arrest

County Department	Resisting Arrest Offenses	Number Involving Alcohol	Percent Involving Alcohol	Number Involving Drugs	Percent Involving Drugs
Sublette County	3	1	33.33%	0	
Sublette SO	3	1	33.33%		
WHP					

Assault

County Department	Assault Offenses	Number Involving Alcohol	Percent Involving Alcohol	Number Involving Drugs	Percent Involving Drugs
Sublette County	5	3	60.00%	0	
Sublette SO	5	3	60.00%		
WHP					

Location of Alcohol Consumption and Point of Sale by Department

Department	Location of Consumption							Point of Sale					
	Alcohol Involved	Home	Bar	Party	Car	Other	No Response	Home	Bar	Drive Up	Party	Liquor Store	No Response
Sublette SO	109	12	47	3	2	3	23	8	41			5	25
WHP	72	6	25	1	1	4	25	2	26		2	5	26
Sublette County Totals	181	18	72	4	3	7	48	10	67	0	2	10	51

Location of Alcohol Consumption

Dept.	Bar Name	Number of Reports
Sublette SO	Bar & Grill	1
	Corral	28
	Cowboy	3
	Rock Rabbit	1
	Silver Spur	
	Sportsman's	
	Stockman's	10
	VFW	
	Wheel Inn	1
WHP	Boulder Bar	3
	Corral	6
	Cowboy	1
	Elk Horn	2
	Silver Spur	3
	Town Square	1
	VFW	2
Waterhole	2	

* Total of percents in Location of Consumption and Point of Sale categories may exceed 100% due to single arrests involving more than one location or point of sale.

Sweetwater County Arrests
January 1, 2010 - December 31, 2010

Numbers by Department

County	Total Offenses	Misde-meanor	Felony	Domestic Violence	Resist Arrest	Assault	Public Intox	Alcohol Involved	Drugs Involved	Traffic Crash	Female	Male	Unknown Gender	Average Age
Sweetwater County	2062	1921	200	126	14	71	373	1165	410	55	488	1574	0	31.52
Court	41	39	2	2		1		9	13	1	11	30	0	26.17
DCI	7	3	5						7		5	2	0	31.86
Green River PD	324	304	26	17	1	15	60	190	61	11	87	237	0	32.63
Other	39	34	3	1		1	18	32	5		14	25	0	31.13
Rock Springs PD	1003	924	121	64	13	37	278	559	212	27	234	769	0	31.19
Sweetwater SO	531	508	34	41		13	12	313	82	11	121	410	0	31.35
WHP	117	109	9	1		4	5	62	30	5	16	101	0	33.91

Percents by Department *

County	Total Offenses	Misde-meanor	Felony	Domestic Violence	Resist Arrest	Assault	Public Intox	Alcohol Involved	Drugs Involved	Traffic Crash	Female	Male	Unkown Gender
Sweetwater County	2062	93.16%	9.70%	6.11%	0.68%	3.44%	18.09%	56.50%	19.88%	2.67%	23.67%	76.33%	0.00%
Court	41	95.12%	4.88%	4.88%	0.00%	2.44%	0.00%	21.95%	31.71%	2.44%	26.83%	73.17%	0.00%
DCI	7	42.86%	71.43%	0.00%	0.00%	0.00%	0.00%	0.00%	100.00%	0.00%	71.43%	28.57%	0.00%
Green River PD	324	93.83%	8.02%	5.25%	0.31%	4.63%	18.52%	58.64%	18.83%	3.40%	26.85%	73.15%	0.00%
Other	39	87.18%	7.69%	2.56%	0.00%	2.56%	46.15%	82.05%	12.82%	0.00%	35.90%	64.10%	0.00%
Rock Springs PD	1003	92.12%	12.06%	6.38%	1.30%	3.69%	27.72%	55.73%	21.14%	2.69%	23.33%	76.67%	0.00%
Sweetwater SO	531	95.67%	6.40%	7.72%	0.00%	2.45%	2.26%	58.95%	15.44%	2.07%	22.79%	77.21%	0.00%
WHP	117	93.16%	7.69%	0.85%	0.00%	3.42%	4.27%	52.99%	25.64%	4.27%	13.68%	86.32%	0.00%

* Total percents may not equal 100 due to lack of information, or a single arrest involving multiple crimes.

MIP Arrests

County Department	DUI Offenses	MIP Arrests	% MIP to DUI	Average MIP BAC
Sweetwater County	597	31	5.19%	0.087
Court	5	1	20.00%	
DCI				
Green River PD	91			
Other	10	3	30.00%	0.120
Rock Springs PD	202	3	1.49%	0.120
Sweetwater SO	231	24	10.39%	0.076
WHP	58			

Meth, Drugs & Public Intoxication

County Department	Total Offenses	Meth Involved	Drugs Involved	Public Intox.	Pub. Intox. Ave. BAC
Sweetwater County	2062	133	410	373	0.187
Court	41	3	13		
DCI	7	4	7		
Green River PD	324	21	61	60	0.195
Other	39	2	5	18	0.180
Rock Springs PD	1003	72	212	278	0.188
Sweetwater SO	531	29	82	12	0.132
WHP	117	2	30	5	0.1690

DUI Arrests

County Department	Total Offenses	DUI Offenses	% DUI Of Total	Ave. BAC	DUI Involving Drugs	% DUI Involving Drugs
Sweetwater County	2062	597	28.95%	0.151	41	6.87%
Court	41	5	12.20%			
DCI	7					
Green River PD	324	91	28.09%	0.150	3	3.30%
Other	39	10	25.64%	0.181		0.00%
Rock Springs PD	1003	202	20.14%	0.158	15	7.43%
Sweetwater SO	531	231	43.50%	0.143	17	7.36%
WHP	117	58	49.57%	0.158	6	10.34%

Traffic Crashes

County Department	Traffic Crashes	Alcohol Involved	% Alcohol Involved	Average BAC	Drugs Involved	% Drugs Involved
Sweetwater County	55	39	70.91%	0.155	2	3.64%
Court	1					
DCI						
Green River PD	11	9	81.82%	0.133	1	9.09%
Other						
Rock Springs PD	27	20	74.07%	0.162		
Sweetwater SO	11	8	72.73%	0.140		
WHP	5	2	40.00%	0.2870	1	20.00%

Underage DUI Arrests

County Department	DUI Offenses	Underage Offenses	% DUI Of Total	Ave. BAC	Drugs Involved	% DUI Drugs Inv.
Sweetwater County	597	52	8.71%	0.123	9	17.31%
Court	5	1				
DCI						
Green River PD	91	8	8.79%	0.123		
Other	10	3	30.00%	0.150		
Rock Springs PD	202	15	7.43%	0.122	3	20.00%
Sweetwater SO	231	25	10.82%	0.120	6	24.00%
WHP	58					

Alcohol and Drug Involvement

Total Offenses

County Department	Total Offenses	Number Involving Alcohol	Percent Involving Alcohol	Number Involving Drugs	Percent Involving Drugs
Sweetwater County	2062	1165	56.50%	410	19.88%
Court	41	9	21.95%	13	31.71%
DCI	7			7	100.00%
Green River PD	324	190	58.64%	61	18.83%
Other	39	32	82.05%	5	12.82%
Rock Springs PD	1003	559	55.73%	212	21.14%
Sweetwater SO	531	313	58.95%	82	15.44%
WHP	117	62	52.99%	30	25.64%

Domestic Violence

County Department	Domestic Violence Offenses	Number Involving Alcohol	Percent Involving Alcohol	Number Involving Drugs	Percent Involving Drugs
Sweetwater County	126	60	47.62%	2	1.59%
Court	2				
DCI					
Green River PD	17	10	58.82%		
Other	1				
Rock Springs PD	64	31	48.44%	2	3.13%
Sweetwater SO	41	18	43.90%		
WHP	1	1	100.00%		

Felony Offenses

County Department	Felony Offenses	Number Involving Alcohol	Percent Involving Alcohol	Number Involving Drugs	Percent Involving Drugs
Sweetwater County	200	45	22.50%	72	36.00%
Court	2			1	50.00%
DCI	5			5	100.00%
Green River PD	26	7	26.92%	3	11.54%
Other	3	2	66.67%	1	33.33%
Rock Springs PD	121	23	19.01%	46	38.02%
Sweetwater SO	34	11	32.35%	11	32.35%
WHP	9	2	22.22%	5	55.56%

Resisting Arrest

County Department	Resisting Arrest Offenses	Number Involving Alcohol	Percent Involving Alcohol	Number Involving Drugs	Percent Involving Drugs
Sweetwater County	14	14	100.00%	0	
Court					
DCI					
Green River PD	1	1	100.00%		
Other					
Rock Springs PD	13	13	100.00%		
Sweetwater SO					
WHP					

Misdemeanor Offenses

County Department	Misdemeanor Offenses	Number Involving Alcohol	Percent Involving Alcohol	Number Involving Drugs	Percent Involving Drugs
Sweetwater County	1921	1124	58.51%	384	19.99%
Court	39	9	23.08%	12	30.77%
DCI	3			3	100.00%
Green River PD	304	184	60.53%	60	19.74%
Other	34	29	85.29%	4	11.76%
Rock Springs PD	924	541	58.55%	200	21.65%
Sweetwater SO	508	302	59.45%	80	15.75%
WHP	109	59	54.13%	25	22.94%

Assault

County Department	Assault Offenses	Number Involving Alcohol	Percent Involving Alcohol	Number Involving Drugs	Percent Involving Drugs
Sweetwater County	71	34	47.89%	1	1.41%
Court	1				
DCI					
Green River PD	15	6	40.00%	1	6.67%
Other	1	1	100.00%		
Rock Springs PD	37	18	48.65%		
Sweetwater SO	13	8	61.54%		
WHP	4	1	25.00%		

Location of Alcohol Consumption and Point of Sale by Department

Department	Alcohol Involved	Location of Consumption						Point of Sale					
		Home	Bar	Party	Car	Other	No Response	Home	Bar	Drive Up	Party	Liquor Store	No Response
Court	9						8						8
DCI													
Green River PD	190	2	12	22	5		148	1	12		22		155
Other	32		9	2	5		16		11		2		19
Rock Springs PD	559	8	77	11	10	1	449		77		11	1	467
Sweetwater SO	313	1	6	9	39	2	255		7		9		294
WHP	62		1		1		60		1				61
Sweetwater													
County Totals	1165	11	105	44	60	3	936	1	108	0	44	1	1004

Location of Alcohol Consumption

Dept.	Bar Name	Number of Reports
Green River PD	Brewery	2
	Green Gander	4
	Mast	1
	Red Feather	2
	Wild Horse	2
Other	Bomber's	3
Rock Springs PD	Astro	9
	Bitter Creek	1
	Bomber's	10
	Budda Bob's	5
	Joe's	1
	Johnny Mac's	3
	Killpepper's	11
	Park Lounge	2
	Poor House	5
	Rock Bottom	1
	Saddle Lite	11
	Windy City Saloon	6
	Wolf Den	1
	Sweetwater SO	Astro
Bomber's		1
Joe's		1
Killpepper's		1
Saddle Lite		2
WHP	Wolf Den	1

* Total of percents in Location of Consumption and Point of Sale categories may exceed 100% due to single arrests involving more than one location or point of sale.

Teton County Arrests
January 1, 2010 - December 31, 2010

Numbers by Department

County	Total Offenses	Misde-meanor	Felony	Domestic Violence	Resist Arrest	Assault	Public Intox	Alcohol Involved	Drugs Involved	Traffic Crash	Female	Male	Unknown Gender	Average Age
Teton County	515	464	28	16	4	6	138	412	27	30	89	414	12	33.23
Jackson PD	251	225	18	7	3	4	109	209	15	10	35	212	4	31.59
Other	9	8	1					7			1	8	0	35.89
Park Service PD	44	126	1	1	1		13	37	3	2	9	34	1	35.95
Teton SO	142	65	7	8		2	16	106	5	10	26	113	3	33.11
WHP	69	40	1					53	4	8	18	47	4	37.16

Percents by Department *

County	Total Offenses	Misde-meanor	Felony	Domestic Violence	Resist Arrest	Assault	Public Intox	Alcohol Involved	Drugs Involved	Traffic Crash	Female	Male	Unkown Gender
Teton County	515	90.10%	5.44%	3.11%	0.78%	1.17%	26.80%	80.00%	5.24%	5.83%	17.28%	80.39%	2.33%
Jackson PD	251	89.64%	7.17%	2.79%	1.20%	1.59%	43.43%	83.27%	5.98%	3.98%	13.94%	84.46%	1.59%
Other	9	88.89%	11.11%	0.00%	0.00%	0.00%	0.00%	77.78%	0.00%	0.00%	11.11%	88.89%	0.00%
Park Service PD	44	286.36%	2.27%	2.27%	2.27%	0.00%	29.55%	84.09%	6.82%	4.55%	20.45%	77.27%	2.27%
Teton SO	142	45.77%	4.93%	5.63%	0.00%	1.41%	11.27%	74.65%	3.52%	7.04%	18.31%	79.58%	2.11%
WHP	69	57.97%	1.45%	0.00%	0.00%	0.00%	0.00%	76.81%	5.80%	11.59%	26.09%	68.12%	5.80%

* Total percents may not equal 100 due to lack of information, or a single arrest involving multiple crimes.

MIP Arrests

County Department	DUI Offenses	MIP Arrests	% MIP to DUI	Average MIP BAC
Teton County	239	6	2.51%	0.125
Jackson PD	79	4	5.06%	0.131
Other	5	1	20.00%	0.100
Park Service PD	24			
Teton SO	76	1	1.32%	
WHP	55			

DUI Arrests

County Department	Total Offenses	DUI Offenses	% DUI Of Total	Ave. BAC	DUI Involving Drugs	% DUI Involving Drugs
Teton County	515	239	46.41%	0.153	13	5.44%
Jackson PD	251	79	31.47%	0.171	8	10.13%
Other	9	5	55.56%	0.100		
Park Service PD	44	24	54.55%	0.137		
Teton SO	142	76	53.52%	0.159	1	1.32%
WHP	69	55	79.71%	0.132	4	7.27%

Underage DUI Arrests

County Department	DUI Offenses	Underage Offenses	% DUI Of Total	Ave. BAC	Drugs Involved	% DUI Drugs Inv.
Teton County	239	8	3.35%	0.067	0	
Jackson PD	79	1	1.27%	0.110		
Other	5					
Park Service PD	24	1	4.17%	0.060		
Teton SO	76	5	6.58%	0.048		
WHP	55	1	1.82%			

Meth, Drugs & Public Intoxication

County Department	Total Offenses	Meth Involved	Drugs Involved	Public Intox.	Pub. Intox. Ave. BAC
Teton County	515	2	27	138	0.230
Jackson PD	251	1	15	109	0.230
Other	9	1			
Park Service PD	44		3	13	0.220
Teton SO	142		5	16	0.240
WHP	69		4		

Traffic Crashes

County Department	Traffic Crashes	Alcohol Involved	% Alcohol Involved	Average BAC	Drugs Involved	% Drugs Involved
Teton County	30	27	90.00%	0.168	2	6.67%
Jackson PD	10	9	90.00%	0.215	1	10.00%
Other						
Park Service PD	2	2	100.00%	0.020		
Teton SO	10	9	90.00%	0.198		
WHP	8	7	87.50%	0.126	1	12.50%

Alcohol and Drug Involvement

Total Offenses

County Department	Total Offenses	Number Involving Alcohol	Percent Involving Alcohol	Number Involving Drugs	Percent Involving Drugs
Teton County	515	412	80.00%	27	5.24%
Jackson PD	251	209	83.27%	15	5.98%
Other	9	7	77.78%		
Park Service PD	44	37	84.09%	3	6.82%
Teton SO	142	106	74.65%	5	3.52%
WHP	69	53	76.81%	4	5.80%

Domestic Violence

County Department	Domestic Violence Offenses	Number Involving Alcohol	Percent Involving Alcohol	Number Involving Drugs	Percent Involving Drugs
Teton County	16	8	50.00%	1	6.25%
Jackson PD	7	3	42.86%	1	14.29%
Other					
Park Service PD	1	1	100.00%		
Teton SO	8	4	50.00%		
WHP					

Felony Offenses

County Department	Felony Offenses	Number Involving Alcohol	Percent Involving Alcohol	Number Involving Drugs	Percent Involving Drugs
Teton County	28	7	25.00%	2	7.14%
Jackson PD	18	6	33.33%	2	11.11%
Other	1				
Park Service PD	1				
Teton SO	7	1	14.29%		
WHP	1				

Resisting Arrest

County Department	Resisting Arrest Offenses	Number Involving Alcohol	Percent Involving Alcohol	Number Involving Drugs	Percent Involving Drugs
Teton County	4	1	25.00%	1	25.00%
Jackson PD	3	1	33.33%		
Other					
Park Service PD	1			1	100.00%
Teton SO					
WHP					

Misdemeanor Offenses

County Department	Misdemeanor Offenses	Number Involving Alcohol	Percent Involving Alcohol	Number Involving Drugs	Percent Involving Drugs
Teton County	464	386	83.19%	26	5.60%
Jackson PD	225	196	87.11%	14	6.22%
Other	8	7	87.50%		
Park Service PD	126	34	26.98%	3	2.38%
Teton SO	65	99	152.31%	5	7.69%
WHP	40	50	125.00%	4	10.00%

Assault

County Department	Assault Offenses	Number Involving Alcohol	Percent Involving Alcohol	Number Involving Drugs	Percent Involving Drugs
Teton County	6	2	33.33%	0	
Jackson PD	4	1	25.00%		
Other					
Park Service PD					
Teton SO	2	1	50.00%		
WHP					

Location of Alcohol Consumption and Point of Sale by Department

Department	Alcohol Involved	Location of Consumption						Point of Sale					
		Home	Bar	Party	Car	Other	No Response	Home	Bar	Drive Up	Party	Liquor Store	No Response
Jackson PD	209	23	109	17	1	20	33	10	105	1	17	24	33
Other	7	1	1	2		1	2		1		1	1	3
Park Service PD	37	3	12	4	3	9	3	3	10		5	6	3
Teton SO	106	18	46	8	2	13	14	7	46		8	17	14
WHP	53	10	21	8	4	6	5	5	18		7	10	5
Teton County Totals	412	55	189	39	10	49	57	25	180	1	38	58	58

Location of Alcohol Consumption

Dept.	Bar Name	Number of Reports
Jackson PD	43 North	1
	Brew Pub	1
	Burke's Chop House	2
	Cadillac	5
	Cowboy	12
	Cutty's	3
	Eleanor's Covee	2
	Koshu Wine Bar	1
	Rancher	1
	Sidewinders	1
	Snake River	2
	Snow King	4
	Tavern on the Square	6
	Town Square Tavern	20
	Virginian	25
Wort	5	
Other	Cadillac	1
Park Service PD	Jackson Lake Lodge	1
	Leeks	1
	Million Dollar Bar	1
	Snake River Grill	1
	Virginian	3
	Whistle Pig	1

Dept.	Bar Name	Number of Reports	
Teton SO	Cadillac	1	
	Cowboy	5	
	Cutty's	1	
	Eleanor's Covee	1	
	Koshu Wine Bar	1	
	Mangy Moose	4	
	Snake River Grill	2	
	Snow King	1	
	Stagecoach	3	
	Tavern on the Square	5	
	Town Square Tavern	4	
	Virginian	8	
	Wort	1	
	WHP	Cadillac	1
		Golf Club	1
		Koshu Wine Bar	1
		Mangy Moose	2
Sidewinders		1	
Stagecoach		1	
Teton Village		2	
Virginian	3		
Wort	1		

* Total of percents in Location of Consumption and Point of Sale categories may exceed 100% due to single arrests involving more than one location or point of sale.

Uinta County Arrests
January 1, 2010 - December 31, 2010

Numbers by Department

County	Total Offenses	Misde-meanor	Felony	Domestic Violence	Resist Arrest	Assault	Public Intox	Alcohol Involved	Drugs Involved	Traffic Crash	Female	Male	Unknown Gender	Average Age
Uinta County	444	398	32	43	9	19	44	260	46	25	90	350	4	32.84
Evanston PD	294	267	16	30	5	15	39	179	22	11	62	231	1	31.78
Lyman PD	9	7	1	1		2		2	1		3	6	0	32.56
Mtn. View PD	3	3			1		2	3			1	2	0	35.00
Uinta SO	62	52	9	12	1	2	3	41	5	5	12	50	0	31.63
WHP	76	69	6		2			35	18	9	12	61	3	37.19

Percents by Department *

County	Total Offenses	Misde-meanor	Felony	Domestic Violence	Resist Arrest	Assault	Public Intox	Alcohol Involved	Drugs Involved	Traffic Crash	Female	Male	Unkown Gender
Uinta County	444	89.64%	7.21%	9.68%	2.03%	4.28%	9.91%	58.56%	10.36%	5.63%	20.27%	78.83%	0.90%
Evanston PD	294	90.82%	5.44%	10.20%	1.70%	5.10%	13.27%	60.88%	7.48%	3.74%	21.09%	78.57%	0.34%
Lyman PD	9	77.78%	11.11%	11.11%	0.00%	22.22%	0.00%	22.22%	11.11%	0.00%	33.33%	66.67%	0.00%
Mtn. View PD	3	100.00%	0.00%	0.00%	33.33%	0.00%	66.67%	100.00%	0.00%	0.00%	33.33%	66.67%	0.00%
Uinta SO	62	83.87%	14.52%	19.35%	1.61%	3.23%	4.84%	66.13%	8.06%	8.06%	19.35%	80.65%	0.00%
WHP	76	90.79%	7.89%	0.00%	2.63%	0.00%	0.00%	46.05%	23.68%	11.84%	15.79%	80.26%	3.95%

* Total percents may not equal 100 due to lack of information, or a single arrest involving multiple crimes.

MIP Arrests

County Department	DUI Offenses	MIP Arrests	% MIP to DUI	Average MIP BAC
Uinta County	139	30	21.58%	0.146
Evanston PD	75	26	34.67%	0.140
Lyman PD	1			
Mtn. View PD				
Uinta SO	20	4	20.00%	0.175
WHP	43			

DUI Arrests

County Department	Total Offenses	DUI Offenses	% DUI Of Total	Ave. BAC	DUI Involving Drugs	% DUI Involving Drugs
Uinta County	444	139	31.31%	0.150	16	11.51%
Evanston PD	294	75	25.51%	0.156	4	5.33%
Lyman PD	9	1	11.11%	0.100		
Mtn. View PD	3		0.00%			
Uinta SO	62	20	32.26%	0.154		
WHP	76	43	56.58%	0.137	12	27.91%

Underage DUI Arrests

County Department	DUI Offenses	Underage Offenses	% DUI Of Total	Ave. BAC	Drugs Involved	% DUI Drugs Inv.
Uinta County	139	6	4.32%	0.154	2	33.33%
Evanston PD	75	3	4.00%	0.175		
Lyman PD	1					
Mtn. View PD						
Uinta SO	20	1	5.00%	0.090		
WHP	43	2	4.65%		2	100.00%

Meth, Drugs & Public Intoxication

County Department	Total Offenses	Meth Involved	Drugs Involved	Public Intox.	Pub. Intox. Ave. BAC
Uinta County	444	20	46	44	0.223
Evanston PD	294	12	22	39	0.230
Lyman PD	9	1	1		
Mtn. View PD	3			2	
Uinta SO	62	4	5	3	0.143
WHP	76	3	18		

Traffic Crashes

County Department	Traffic Crashes	Alcohol Involved	% Alcohol Involved	Average BAC	Drugs Involved	% Drugs Involved
Uinta County	25	21	84.00%	0.170	4	16.00%
Evanston PD	11	9	81.82%	0.212	2	18.18%
Lyman PD						
Mtn. View PD						
Uinta SO	5	5	100.00%	0.159		
WHP	9	7	77.78%	0.135	2	22.22%

Alcohol and Drug Involvement

Total Offenses

County Department	Total Offenses	Number Involving Alcohol	Percent Involving Alcohol	Number Involving Drugs	Percent Involving Drugs
Uinta County	444	260	58.56%	46	10.36%
Evanston PD	294	179	60.88%	22	7.48%
Lyman PD	9	2	22.22%	1	11.11%
Mtn. View PD	3	3	100.00%		
Uinta SO	62	41	66.13%	5	8.06%
WHP	76	35	46.05%	18	23.68%

Domestic Violence

County Department	Domestic Violence Offenses	Number Involving Alcohol	Percent Involving Alcohol	Number Involving Drugs	Percent Involving Drugs
Uinta County	43	25	58.14%	0	
Evanston PD	30	16	53.33%		
Lyman PD	1				
Mtn. View PD					
Uinta SO	12	9	75.00%		
WHP					

Felony Offenses

County Department	Felony Offenses	Number Involving Alcohol	Percent Involving Alcohol	Number Involving Drugs	Percent Involving Drugs
Uinta County	32	7	21.88%	8	25.00%
Evanston PD	16	4	25.00%	3	18.75%
Lyman PD	1				
Mtn. View PD					
Uinta SO	9	3	33.33%	1	11.11%
WHP	6			4	66.67%

Resisting Arrest

County Department	Resisting Arrest Offenses	Number Involving Alcohol	Percent Involving Alcohol	Number Involving Drugs	Percent Involving Drugs
Uinta County	9	8	88.89%	0	
Evanston PD	5	5	100.00%		
Lyman PD					
Mtn. View PD	1	1	100.00%		
Uinta SO	1	1	100.00%		
WHP	2	1	50.00%		

Misdemeanor Offenses

County Department	Misdemeanor Offenses	Number Involving Alcohol	Percent Involving Alcohol	Number Involving Drugs	Percent Involving Drugs
Uinta County	398	244	61.31%	38	9.55%
Evanston PD	267	170	63.67%	18	6.74%
Lyman PD	7	1	14.29%	1	14.29%
Mtn. View PD	3	3	100.00%		
Uinta SO	52	37	71.15%	4	7.69%
WHP	69	33	47.83%	15	21.74%

Assault

County Department	Assault Offenses	Number Involving Alcohol	Percent Involving Alcohol	Number Involving Drugs	Percent Involving Drugs
Uinta County	19	16	84.21%	0	
Evanston PD	15	13	86.67%		
Lyman PD	2	1	50.00%		
Mtn. View PD					
Uinta SO	2	2	100.00%		
WHP					

Location of Alcohol Consumption and Point of Sale by Department

Department	Location of Consumption							Point of Sale					
	Alcohol Involved	Home	Bar	Party	Car	Other	No Response	Home	Bar	Drive Up	Party	Liquor Store	No Response
Evanston PD	179	42	62	11	8	20	25	19	65		4	15	50
Lyman PD	2						2						2
Mtn. View PD	3	2	1					1	1			1	
Uinta SO	41	11	13	2	6		8	2	13	1	1	4	16
WHP	35	7	13		6	6	2	3	14	1		6	5
Uinta County Totals	260	62	89	13	20	26	37	25	93	2	5	26	73

Location of Alcohol Consumption

Dept.	Bar Name	Number of Reports
Evanston PD	Howard Johnson	4
	Kate's	3
	Legal Tender	31
	Lotty's	8
	Painted Lady	4
	Sud's Brothers	1
	Veranda	6
	VFW	1
Mtn. View PD	Bridger Valley Lanes	1

Dept.	Bar Name	Number of Reports
Uinta SO	Bowling Alley	4
	Cowboy	3
	Ft. Bridger Club	2
	Lotty's	1
WHP	Bowling Alley	2
	Ft. Bridger Club	1
	Cowboy	4
	Lotty's	1
	Mtn. View Bowling	1
	VFW	1

* Total of percents in Location of Consumption and Point of Sale categories may exceed 100% due to single arrests involving more than on location or point of sale.

Washakie County Arrests
January 1, 2010 - December 31, 2010

Numbers by Department

County	Total Offenses	Misde-meanor	Felony	Domestic Violence	Resist Arrest	Assault	Public Intox	Alcohol Involved	Drugs Involved	Traffic Crash	Female	Male	Unknown Gender	Average Age
Washakie County	188	155	22	15	5	16	20	134	37	3	33	154	1	.33.57
Other	5	4			1			3	1			5	0	24.00
Washakie SO	50	38	10	1	1	4	7	34	15	2	7	42	1	34.96
WHP	13	10	2					10	3		2	11	0	30.40
Worland PD	120	103	10	14	3	12	13	87	18	1	24	96	0	33.81

Percents by Department *

County	Total Offenses	Misde-meanor	Felony	Domestic Violence	Resist Arrest	Assault	Public Intox	Alcohol Involved	Drugs Involved	Traffic Crash	Female	Male	Unkown Gender
Washakie County	188	82.45%	11.70%	7.98%	2.66%	8.51%	10.64%	71.28%	19.68%	1.60%	17.55%	81.91%	0.53%
Other	5	80.00%	0.00%	0.00%	20.00%	0.00%	0.00%	60.00%	20.00%	0.00%	0.00%	100.00%	0.00%
Washakie SO	50	76.00%	20.00%	2.00%	2.00%	8.00%	14.00%	68.00%	30.00%	4.00%	14.00%	84.00%	2.00%
WHP	13	76.92%	15.38%	0.00%	0.00%	0.00%	0.00%	76.92%	23.08%	0.00%	15.38%	84.62%	0.00%
Worland PD	120	85.83%	8.33%	11.67%	2.50%	10.00%	10.83%	72.50%	15.00%	0.83%	20.00%	80.00%	0.00%

* Total percents may not equal 100 due to lack of information, or a single arrest involving multiple crimes.

MIP Arrests

County Department	DUI Offenses	MIP Arrests	% MIP to DUI	Average MIP BAC
Washakie County	74	7	9.46%	0.121
Other	2	1	50.00%	0.160
Washakie SO	19	4	21.05%	0.145
WHP	10	1	10.00%	0.050
Worland PD	43	7	16.28%	0.108

Meth, Drugs & Public Intoxication

County Department	Total Offenses	Meth Involved	Drugs Involved	Public Intox.	Pub. Intox. Ave. BAC
Washakie County	188	15	37	20	0.268
Other	5	1	1		
Washakie SO	50	10	15	7	0.239
WHP	13		3		
Worland PD	120	4	18	13	0.281

DUI Arrests

County Department	Total Offenses	DUI Offenses	% DUI Of Total	Ave. BAC	DUI Involving Drugs	% DUI Involving Drugs
Washakie County	188	74	39.36%	0.147	8	10.81%
Other	5	2	40.00%	0.178		0.00%
Washakie SO	50	19	38.00%	0.153	2	10.53%
WHP	13	10	76.92%	0.149	2	20.00%
Worland PD	120	43	35.83%	0.143	4	9.30%

Traffic Crashes

County Department	Traffic Crashes	Alcohol Involved	% Alcohol Involved	Average BAC	Drugs Involved	% Drugs Involved
Washakie County	3	3	100.00%	0.203	0	
Other						
Washakie SO	2	2	100.00%	0.200		
WHP						
Worland PD	1	1	100.00%	0.210		

Underage DUI Arrests

County Department	DUI Offenses	Underage Offenses	% DUI Of Total	Ave. BAC	Drugs Involved	% DUI Drugs Inv.
Washakie County	74	7	9.46%	0.093	2	2.70%
Other	2	1	50.00%	0.150		
Washakie SO	19	2	10.53%	0.095	1	5.26%
WHP	10	1	10.00%	0.080		
Worland PD	43	3	6.98%	0.077	1	2.33%

Alcohol and Drug Involvement

Total Offenses

County Department	Total Offenses	Number Involving Alcohol	Percent Involving Alcohol	Number Involving Drugs	Percent Involving Drugs
Washakie County	188	134	71.28%	37	19.68%
Other	5	3	60.00%	1	20.00%
Washakie SO	50	34	68.00%	15	30.00%
WHP	13	10	76.92%	3	23.08%
Worland PD	120	87	72.50%	18	15.00%

Domestic Violence

County Department	Domestic Violence Offenses	Number Involving Alcohol	Percent Involving Alcohol	Number Involving Drugs	Percent Involving Drugs
Washakie County	15	11	73.33%	0	
Other					
Washakie SO	1				
WHP					
Worland PD	14	11	78.57%		

Felony Offenses

County Department	Felony Offenses	Number Involving Alcohol	Percent Involving Alcohol	Number Involving Drugs	Percent Involving Drugs
Washakie County	22	7	31.82%	7	31.82%
Other					
Washakie SO	10	4	40.00%	5	50.00%
WHP	2			1	50.00%
Worland PD	10	3	30.00%	1	10.00%

Resisting Arrest

County Department	Resisting Arrest Offenses	Number Involving Alcohol	Percent Involving Alcohol	Number Involving Drugs	Percent Involving Drugs
Washakie County	5	3	60.00%	3	60.00%
Other	1	1	100.00%		
Washakie SO	1	1	100.00%	1	100.00%
WHP					
Worland PD	3	1	33.33%	2	66.67%

Misdemeanor Offenses

County Department	Misdemeanor Offenses	Number Involving Alcohol	Percent Involving Alcohol	Number Involving Drugs	Percent Involving Drugs
Washakie County	155	119	76.77%	29	18.71%
Other	4	2	50.00%	1	25.00%
Washakie SO	38	30	78.95%	9	23.68%
WHP	10	9	90.00%	2	20.00%
Worland PD	103	78	75.73%	17	16.50%

Assault

County Department	Assault Offenses	Number Involving Alcohol	Percent Involving Alcohol	Number Involving Drugs	Percent Involving Drugs
Washakie County	16	11	68.75%	0	
Other					
Washakie SO	4	2	50.00%		
WHP					
Worland PD	12	9	75.00%		

Location of Alcohol Consumption and Point of Sale by Department

Department	Alcohol Involved	Location of Consumption						Point of Sale					
		Home	Bar	Party	Car	Other	No Response	Home	Bar	Drive Up	Party	Liquor Store	No Response
Other	3				1	1	1		1	1			1
Washakie SO	34	1	7	4	3	2	13	1	7	1	3	1	18
WHP	10	1		1	4	1	3	1	1		1	1	4
Worland PD	87	11	17	9	6	3	27	2	16	2	5	8	39
Washakie County													
Totals	134	13	24	14	14	7	44	4	25	4	9	10	62

Location of Alcohol Consumption

Dept.	Bar Name	Number of Reports
Washakie SO	Hi-way Bar	1
	Ten Sleep Saloon	4
Worland PD	Branding Iron	1
	Goose's	4
	Legion	1
	Little Chicago	1
	Rendezvous	3
	Rock Bottom	3
	Rumors	4

* Total of percents in Location of Consumption and Point of Sale categories may exceed 100% due to single arrests involving more than one location or point of sale.

Weston County Arrests
January 1, 2010 - December 31, 2010

Numbers by Department

County	Total Offenses	Misde-meanor	Felony	Domestic Violence	Resist Arrest	Assault	Public Intox	Alcohol Involved	Drugs Involved	Traffic Crash	Female	Male	Unknown Gender	Average Age
Weston County	67	58	5	6	0	4	2	51	6	4	10	56	1	34.49
Newcastle PD	31	27	2	1		3	2	22	3	1	7	24	0	35.35
Upton PD	7	6	1	1		1		5		1	1	5	1	35.00
Weston SO	18	16	1	4				14	1	2	2	16	0	30.71
WHP	11	9	1					10	2			11	0	37.90

Percents by Department *

County	Total Offenses	Misde-meanor	Felony	Domestic Violence	Resist Arrest	Assault	Public Intox	Alcohol Involved	Drugs Involved	Traffic Crash	Female	Male	Unkown Gender
Weston County	67	86.57%	7.46%	8.96%	0.00%	5.97%	2.99%	76.12%	8.96%	5.97%	14.93%	83.58%	1.49%
Newcastle PD	31	87.10%	6.45%	3.23%	0.00%	9.68%	6.45%	70.97%	9.68%	3.23%	22.58%	77.42%	0.00%
Upton PD	7	85.71%	14.29%	14.29%	0.00%	14.29%	0.00%	71.43%	0.00%	14.29%	14.29%	71.43%	14.29%
Weston SO	18	88.89%	5.56%	22.22%	0.00%	0.00%	0.00%	77.78%	5.56%	11.11%	11.11%	88.89%	0.00%
WHP	11	81.82%	9.09%	0.00%	0.00%	0.00%	0.00%	90.91%	18.18%	0.00%	0.00%	100.00%	0.00%

* Total percents may not equal 100 due to lack of information, or a single arrest involving multiple crimes.

MIP Arrests

County Department	DUI Offenses	MIP Arrests	% MIP to DUI	Average MIP BAC
Weston County	38	1	2.63%	No rpt.
Newcastle PD	15			
Upton PD	3	1	33.33%	
Weston SO	10			
WHP	10			

Meth, Drugs & Public Intoxication

County Department	Total Offenses	Meth Involved	Drugs Involved	Public Intox.	Pub. Intox. Ave. BAC
Weston County	67	0	6	2	0.210
Newcastle PD	31		3	2	0.210
Upton PD	7				
Weston SO	18		1		
WHP	11		2		

DUI Arrests

County Department	Total Offenses	DUI Offenses	% DUI Of Total	Ave. BAC	DUI Involving Drugs	% DUI Involving Drugs
Weston County	67	38	56.72%	0.136	3	7.89%
Newcastle PD	31	15	48.39%	0.138	2	13.33%
Upton PD	7	3		0.149		
Weston SO	18	10	55.56%	0.149		
WHP	11	10	90.91%	0.118	1	10.00%

Traffic Crashes

County Department	Traffic Crashes	Alcohol Involved	% Alcohol Involved	Average BAC	Drugs Involved	% Drugs Involved
Weston County	4	4	100.00%	0.111	0	
Newcastle PD	1	1	100.00%	0.085		
Upton PD	1	1	100.00%	0.137		
Weston SO	2	2	100.00%			
WHP						

Underage DUI Arrests

County Department	DUI Offenses	Underage Offenses	% DUI Of Total	Ave. BAC	Drugs Involved	% DUI Drugs Inv.
Weston County	38	5	13.16%	0.114	0	
Newcastle PD	15	2	13.33%	0.123		
Upton PD	3	1	33.33%	0.160		
Weston SO	10	2	20.00%	0.150		
WHP	10					

Alcohol and Drug Involvement

Total Offenses

County Department	Total Offenses	Number Involving Alcohol	Percent Involving Alcohol	Number Involving Drugs	Percent Involving Drugs
Weston County	67	51	76.12%	6	8.96%
Newcastle PD	31	22	70.97%	3	9.68%
Upton PD	7	5	71.43%		
Weston SO	18	14	77.78%	1	5.56%
WHP	11	10	90.91%	2	18.18%

Domestic Violence

County Department	Domestic Violence Offenses	Number Involving Alcohol	Percent Involving Alcohol	Number Involving Drugs	Percent Involving Drugs
Weston County	6	3	50.00%	0	
Newcastle PD	1	1	100.00%		
Upton PD	1				
Weston SO	4	2	50.00%		
WHP					

Felony Offenses

County Department	Felony Offenses	Number Involving Alcohol	Percent Involving Alcohol	Number Involving Drugs	Percent Involving Drugs
Weston County	5	1	20.00%	1	50.00%
Newcastle PD	2				
Upton PD	1				
Weston SO	1	1	100.00%		
WHP	1			1	100.00%

Resisting Arrest

County Department	Resisting Arrest Offenses	Number Involving Alcohol	Percent Involving Alcohol	Number Involving Drugs	Percent Involving Drugs
Weston County	0				
Newcastle PD					
Upton PD					
Weston SO					
WHP					

Misdemeanor Offenses

County Department	Misdemeanor Offenses	Number Involving Alcohol	Percent Involving Alcohol	Number Involving Drugs	Percent Involving Drugs
Weston County	58	48	82.76%	3	5.17%
Newcastle PD	27	21	77.78%	2	7.41%
Upton PD	6	5	83.33%		
Weston SO	16	13	81.25%		
WHP	9	9	100.00%	1	11.11%

Assault

County Department	Assault Offenses	Number Involving Alcohol	Percent Involving Alcohol	Number Involving Drugs	Percent Involving Drugs
Weston County	4	1	66.00%	0	
Newcastle PD	3	1	66.00%		
Upton PD	1				
Weston SO					
WHP					

Location of Alcohol Consumption and Point of Sale by Department

Department	Location of Consumption							Point of Sale					
	Alcohol Involved	Home	Bar	Party	Car	Other	No Response	Home	Bar	Drive Up	Party	Liquor Store	No Response
Newcastle PD	22	3	5	1		1	10	1	6		1	1	11
Upton PD	5	2					2	1	1				2
Weston SO	14	5	3			1	5	2	5			1	5
WHP	10		3		2	1	4		4			2	4
Weston County													
Totals	51	10	11	1	2	3	21	4	16	0	1	4	22

Location of Alcohol Consumption

Dept.	Bar Name	Number of Reports
Newcastle PD	Fountain Mirror	1
	Iron Horse	3
Upton PD	Polly's Bar	1
Weston SO	Perkin's Tavern	1
	Polly's Bar	1
WHP	Polly's Bar	2

* Total of percents in Location of Consumption and Point of Sale categories may exceed 100% due to single arrests involving more than one location or point of sale.

PROJECT MANAGER VITA

CONTACT INFORMATION:

Ernest L. Johnson, Director of Services
Johnson & Associates
1036 Durango
Douglas, WY 82633
Phone: (307) 351-8614
Fax: (800) 954-0778
E-mail: janda@communicomm.com

RELATED EDUCATION & EXPERIENCE:

- Twenty-four years experience as an administrator of a state agency with direct responsibility for budget development and administration, planning, organizing, directing, staffing, and program services delivery.
- Masters degree in Public Administration; over twenty years experience training and working with executives to achieve excellence in government, manage and implement change, increase organizational effectiveness and maximize program efficiency.
- Conducted in-depth management studies for criminal justice agencies for the states of Massachusetts and New Hampshire. These studies assessed the delivery of program services by agencies with statewide responsibilities and provided recommendations for increasing organizational efficiency and agency credibility.
- Over thirty-five years of experience in researching, writing, and administering a variety of federal and state grants. Grants involved in excess of several million dollars for a wide variety of purposes: personnel, equipment, training, research and providing services with targeted priorities.
- Extensive experience in researching, evaluating and implementing a wide variety of projects. These projects varied in scope and duration, and many required the involvement and partnership of multiple agencies and personnel throughout the state, as well as the enactment of state legislation.
 - Evaluation performed for the Substance Abuse Division - WDH – “Responsible Server Training Program” – October 2002
 - Managed the Wyoming First Lady’s Initiative to Reduce Underage Drinking – November 2004 to September 2006
 - Currently serving as the Facilitator for the Wyoming Seat Belt Coalition
 - Managed project and authored report: A Comprehensive Review of Alcohol State Statutes: Findings and Recommendations for Reducing Underage and Binge Drinking in Wyoming - 2008

Alcohol and Crime in Wyoming - 2010

- Thirty years of experience in conducting a variety of feasibility studies
 - Conducted numerous feasibility studies for the Wyoming Legislature
 - Most recent feasibility study conducted for the Town of Wright: “Should the Town of Wright create its own Police Department?” May 2004

- Conducted executive level training for the US Department of Justice/ State Department:
 - Instructed a 40-hour training course entitled “The Office of Professional Responsibility” for the Lithuania National Police command staff - 2001
 - Instructed an 80-hour training course entitled “Sex Crimes Investigations” for Investigators and Prosecutors in Lithuania - 2001

- Faculty - Criminal Justice Department - University of Wyoming (September 2000 to present)
 - Currently teaching the following courses: Criminal Justice Management, Concepts of Modern Policing, Ethics in the Administration of Justice, Criminal Justice Civil Liability, Politics and the Judicial Process, Criminal Courts and Processes, and Police Deviance.

- Management consultant for the Wyoming Association of Sheriffs and Chiefs of Police - Projects completed or currently in progress:
 - Evaluation of Alcohol Factors in Custodial Arrest in Wyoming – May 2005
 - Statewide Public Opinion Survey: Alcohol Issues and Policies (phone survey of 4,600 residents of Wyoming – Report released November 2006
 - Evaluation of Alcohol Factors in Custodial Arrests in Wyoming - 2006: Phase I (data collection), Phase II (Analysis, Findings and Strategies)
 - Evaluation of Alcohol Factors in Custodial Arrests in Wyoming – 2007, 2008, 2009
 - Project Manager for the Enforcing Underage Drinking Laws Program – September 2007 to May 2009
 - Project Manager for WY-CIA Wyoming Communities in Action – Phase I, Phase II – September 2007 to May 2009
 - Project Manager for Reducing Underage Drinking and Driving – October 2007 to September 2009
 - Project Coordinator for Project Safe Neighborhoods in Wyoming: A national initiative directed by the US Department of Justice aimed at reducing gun crimes and violence in this country. Initiative is currently in its sixth year of operation in Wyoming.

- Facilitator/Coordinator for the Wyoming Seat Belt Coalition – December 2006 to present

- Administration and coordination of WYDOT-Highway Safety’s Selective Traffic Enforcement Program Grants for Wyoming law enforcement agencies– December 2008 to present