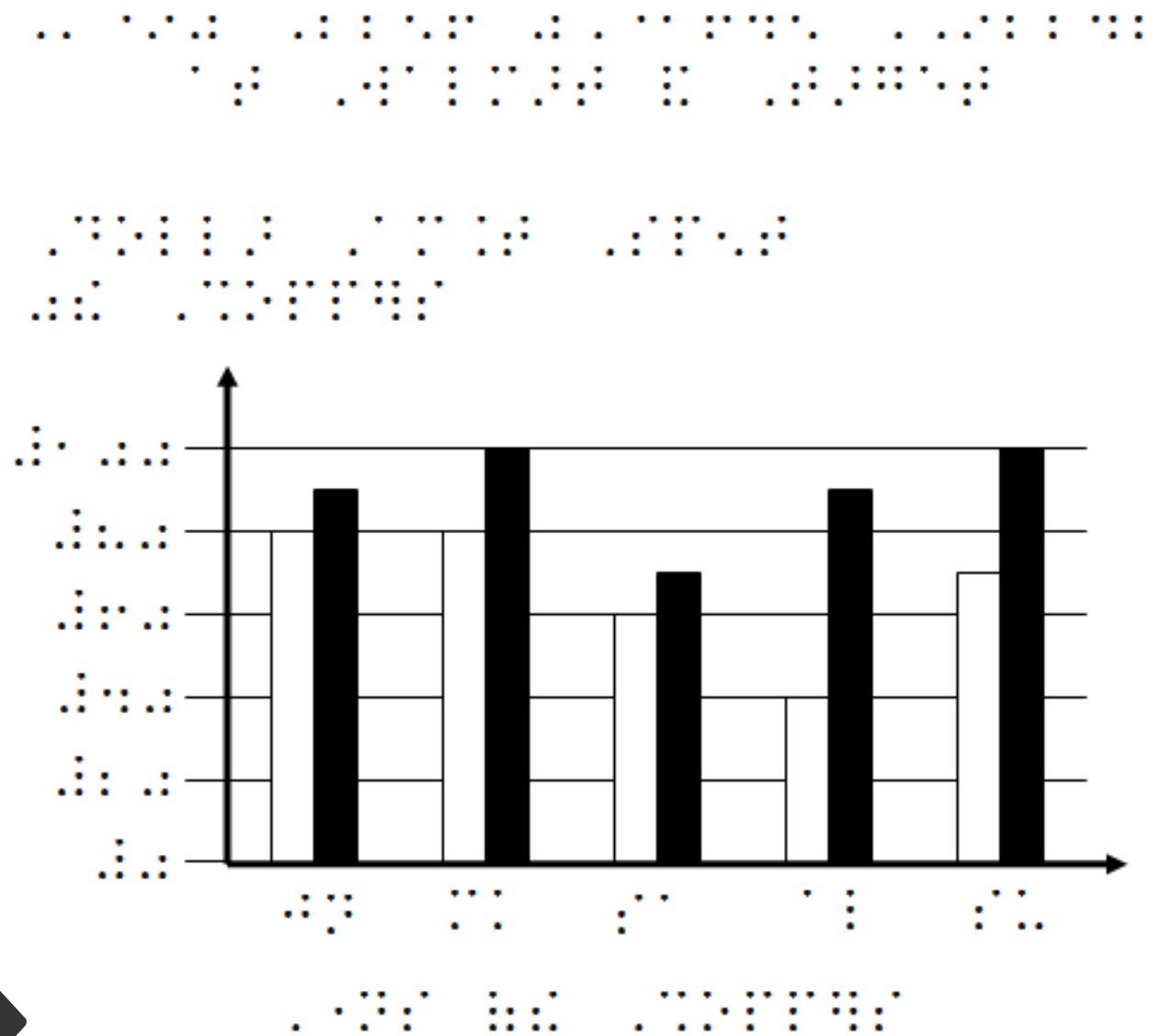


# MAKING TACTILE GRAPHICS

WITHOUT A TACTILES GRAPHICS  
EMBOSSER



**Kathryn Sheriff Segers, Ph.D.**

Tennessee School for the Blind  
Resource Center for the Visually Impaired  
GVST Conference- October 11, 2018

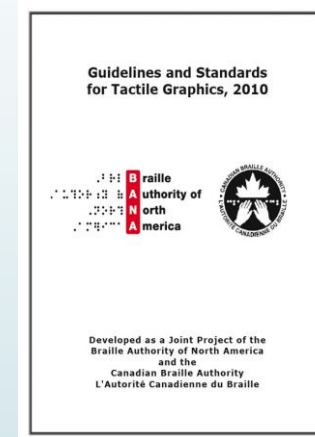
A decorative graphic on the left side of the slide. It features a dark blue vertical bar on the far left. A black arrow points to the right from the top of this bar. Several thin, light blue lines curve downwards and to the right from the bottom of the arrow, creating a sense of movement and depth.

# HOW ARE TACTILE GRAPHICS MADE?

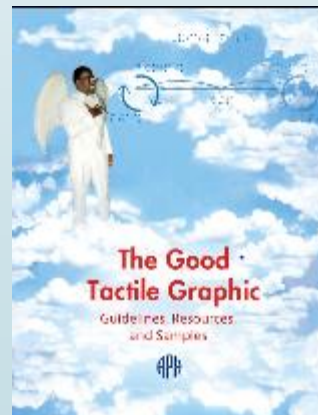
- ▶ COLLAGE METHOD- By hand
- ▶ SWELL FORM PAPER –Copied or traced and heated in a machine to raise the lines
- ▶ THERMOFORM-TO MAKE A COPY OF A TACTILE GRAPHIC
- ▶ COMPUTER GENERATED WITH A TACTILE GRAPHICS EMBOSSER
- ▶ COMPUTER GENERATED WITH A REGULAR EMBOSSER

# WHAT ARE THE CHARACTERISTICS OF A GOOD TACTILE GRAPHIC?

- ▶ APH Guidelines for Design of Tactile Graphics (See handout)



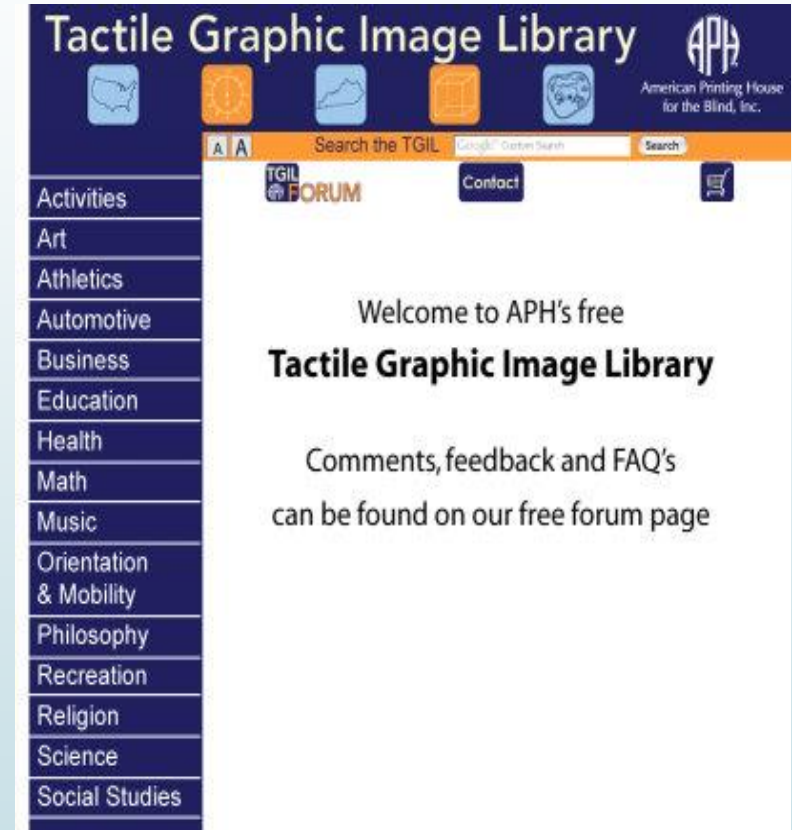
- ▶ The Good Tactile Graphic from APH



# What tools are available to make tactile graphics?

APH has many kits and resources

- ▶ APH Tactile Graphics Kits for Math
- ▶ Draftsman Kits
- ▶ Crafty Graphics
- ▶ Tactile Graphic Line Slate
- ▶ Quick Draw Paper
- ▶ Swail Dot Inverter
- ▶ Permabrilite Sheets in various sizes
- ▶ APH Tactile Graphics Library



The screenshot shows the homepage of the Tactile Graphic Image Library (TGIL). The header features the title "Tactile Graphic Image Library" and the APH logo (American Printing House for the Blind, Inc.). Below the header is a navigation bar with a search box and a "Contact" button. A vertical sidebar on the left lists various categories: Activities, Art, Athletics, Automotive, Business, Education, Health, Math, Music, Orientation & Mobility, Philosophy, Recreation, Religion, Science, and Social Studies. The main content area displays a welcome message: "Welcome to APH's free Tactile Graphic Image Library" and a link to the forum page: "Comments, feedback and FAQ's can be found on our free forum page".

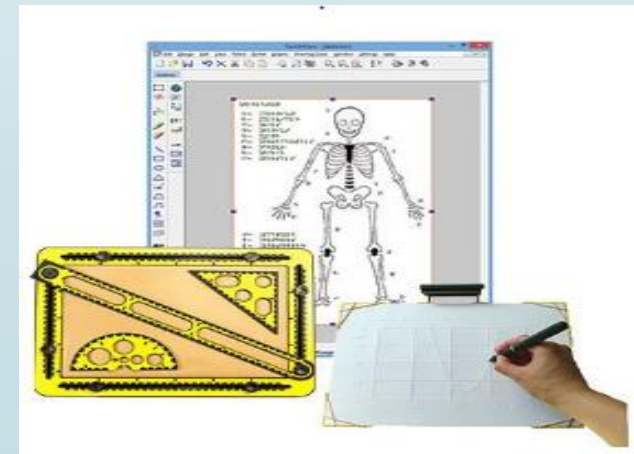


# Already made Tactile Graphics Resources

- ▶ APH Braille Atlas
- ▶ Basic Science Tactile Graphics
- ▶ Tactile Treasures
- ▶ Basic Tactile Anatomy Atlas
- ▶ Life Science Tactile Graphics
- ▶ Touch, Label ,and Learn Poster-Human Skeleton
- ▶ Braille Transcriber's Kits
  - Countries and Continents
  - U.S. Maps
  - Math

# Computer-Generated Tactile Graphics

- ▶ With a tactile graphics embosser
  - CorelDraw software
  - Microsoft Word drawing menu
- ▶ Tactileview Software/Tactipad Drawing Tablet
  - Will work with any embosser and the APH Tactile Graphics Library
  - Will create line drawing from any graphic. May modify and tweak.
  - TactileView has its own image library
  - Can use your photographs or images or download from google images, etc and Convert to line drawings.



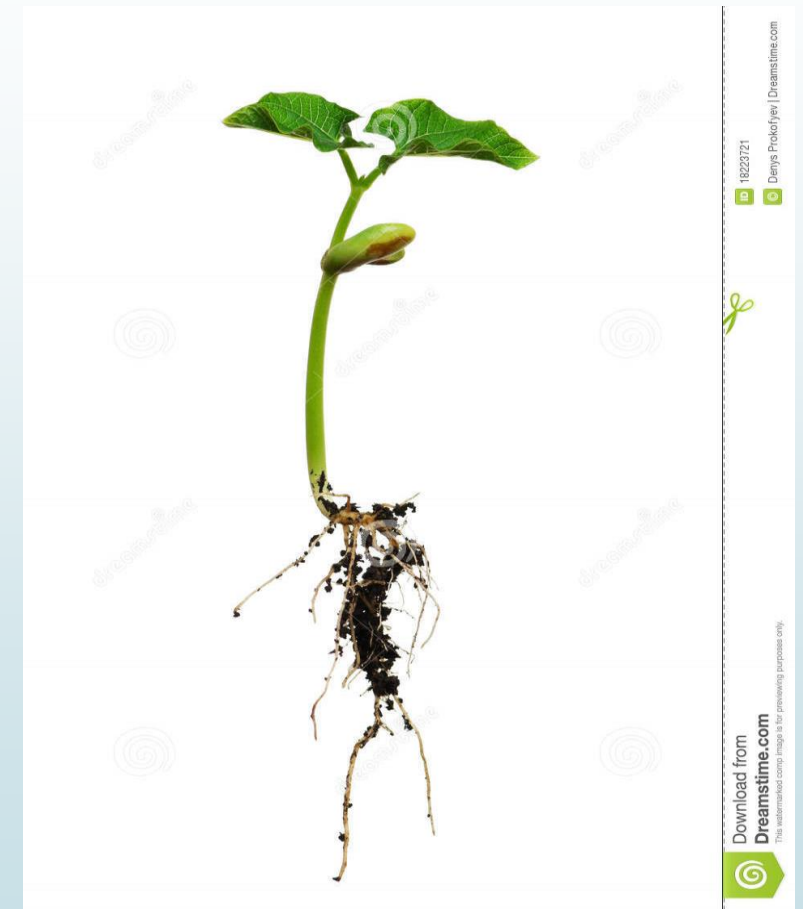
# Let's make a Map

- ▶ Import graphics from APH tactile graphics library <https://www.aph.org/tgil/>
- ▶ Adjust or modify as needed
- ▶ Add labeling and titles
- ▶ Emboss



# Let's make a plant drawing

- Find picture of a plant online.
- Import the picture.
- Tell Tactileview to make it a line drawing
- Modify as needed.
- Add labeling and titles
- Emboss







# Contact Information

Kathryn Sheriff Segers

Director of Outreach, RCVI, and Admissions

Tennessee School for the Blind

115 Stewarts Ferry Pike, Building 14

Nashville, TN 37214

Phone: 615-231-7317

Email: [kathy.segers@tsbtigers.org](mailto:kathy.segers@tsbtigers.org)