

January 2014

component racks



enhancing the performance
and style of home entertainment
like no other...

StudioTech™

Contemporary Entertainment
Center Furniture



R22



Oversized top shelf provides striking visual contradiction to the elegant curved frame.



Adjustable vinyl glide feet allow for easy movement of the rack, protect hardwood/tile floors, and compensate for unlevel surfaces.



The elegant, contemporary design of this unique glass component rack provides a striking showcase for small to mid-sized audio-video equipment. The R-22 is manufactured in accordance with StudioTech's uncompromising quality standards. The true-tempered glass shelves provide a strong, stable foundation for components, while keeping them cool and accessible.

Features:

- Accommodates plasma, DLP, and LCD screens up to 60".
- Lower shelves accommodate up to 6 components.
- Metal frame is finished with durable, textured powder coat paint.
- 1/2" thick frosted, tempered glass shelves.

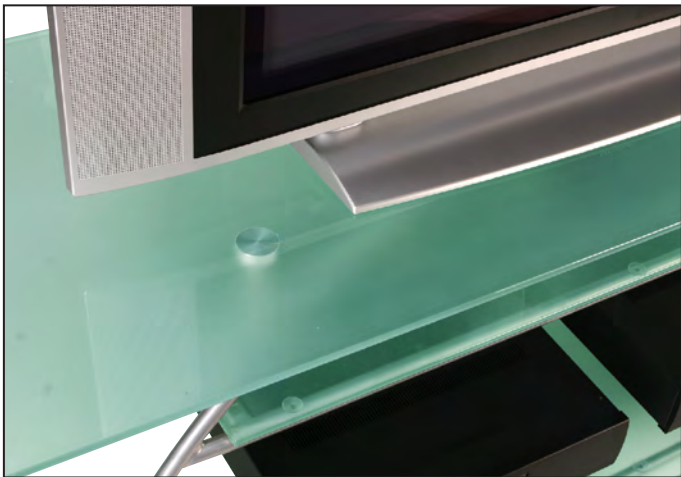


CustomRetailer

For product updates,
please visit our website at
www.studiotech.com

Recipient of Custom Retailer
Magazine's 2004 Excite Award

Features



Frosted tempered glass shelves compliment todays high tech audio/video equipment.



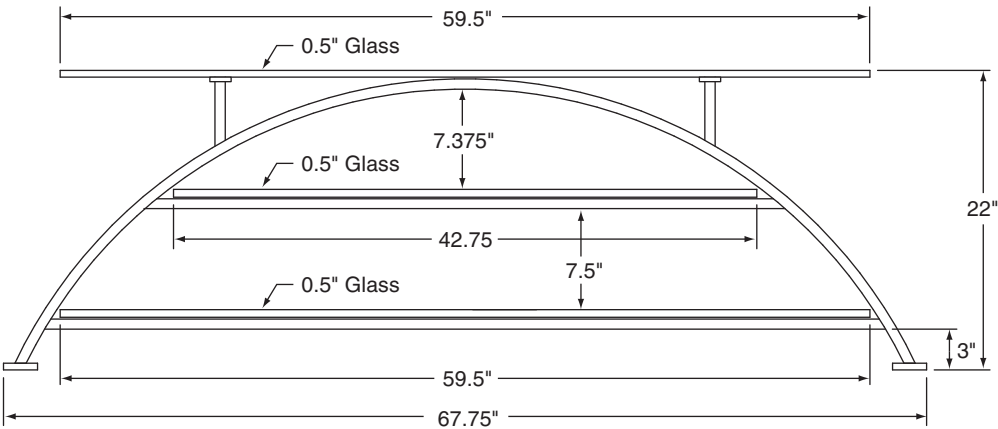
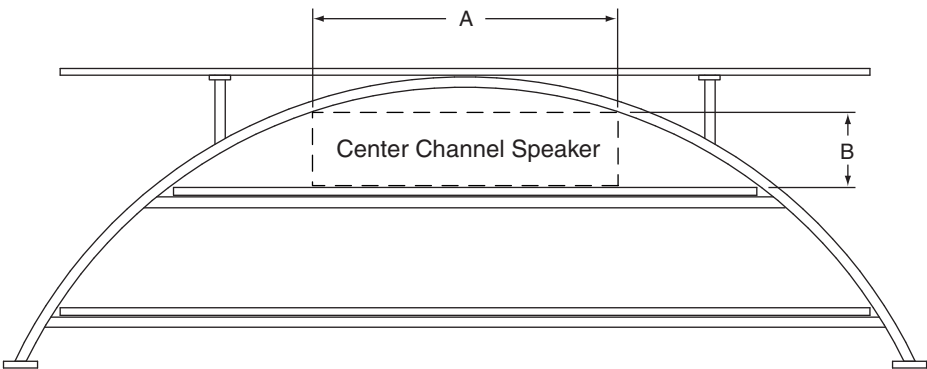
Striking cantilevered design with 1/2" tempered glass provides clean contemporary look that complements any home theater.



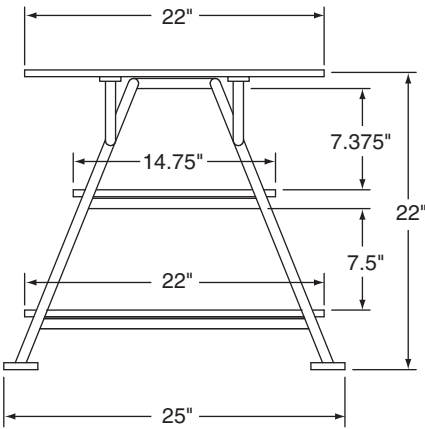
R22
3 SHELF GLASS AV COMPONENT RACK

Center Channel Speaker
Measurement Guide

A	B (no more than)
11"	6 7/8"
12"	6 7/8"
13"	6 3/4"
14"	6 5/8"
15"	6 1/2"
16"	6 3/8"
17"	6 1/4"
18"	6 1/8"
19"	6"
20"	5 7/8"
21"	5 3/4"
22"	5 5/8"
23"	5 3/8"
24"	5 1/4"



FRONT VIEW



SIDE VIEW