

# SHORE PARK



**SKYLINE**®

# SHORE PARK

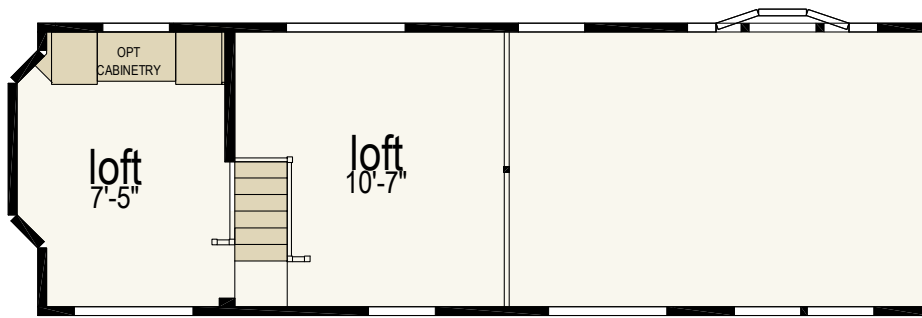
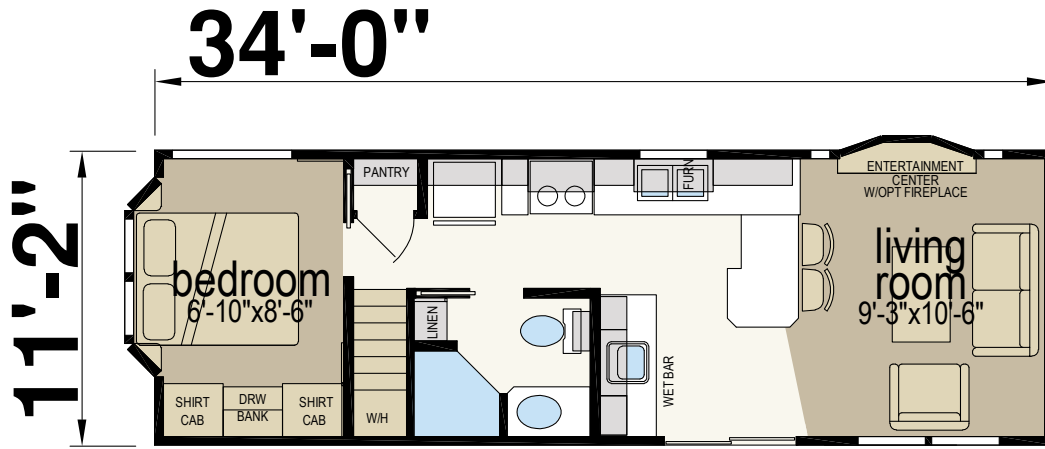
## 12' Wide Floor Plans

Skyline is pleased to offer our Shore Park Series of park models. Our Shore Park Series is ideal for campgrounds, retirement communities, or that perfect little spot by the lake. Shore Park features may include a spacious bathroom, custom painted drywall interior, wood trim, and innovative ceiling finishes. The Shore Park Series is manufactured in Lancaster, WI and is backed by over 70 years of manufacturing experience. With Skyline's unmatched customer service, the only thing you will have to worry about is where you are going to park it.



# 1955AR

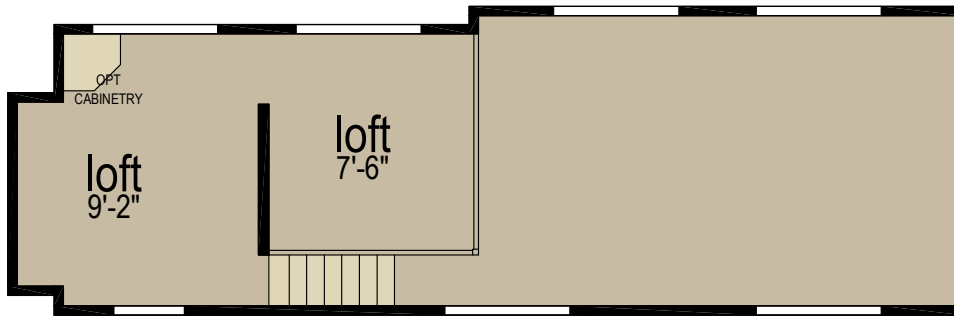
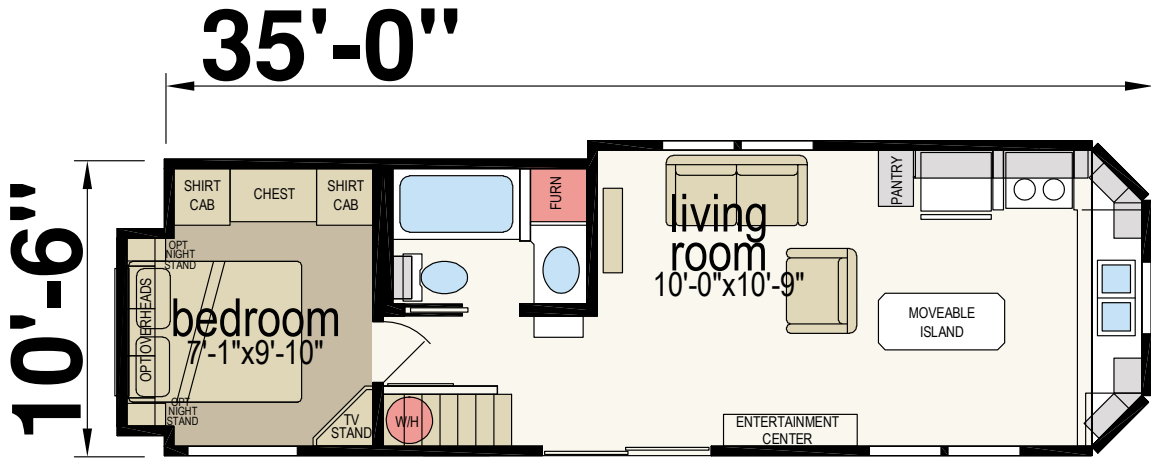
One Bed | One Bath | 399 sq. ft.



LOFT STORAGE AREA

# 1911

One Bed | One Bath | 399 sq. ft.

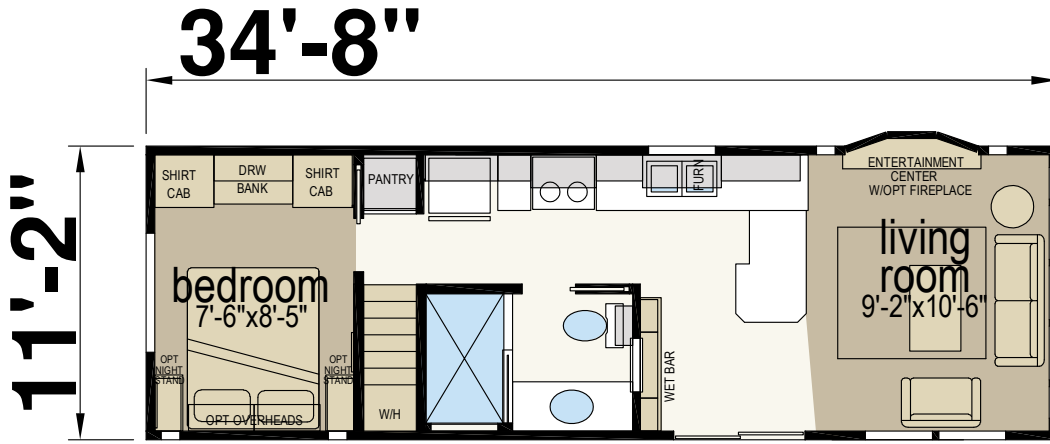


LOFT STORAGE AREA



# 1969CTP

One Bed | One Bath | 399 sq. ft.

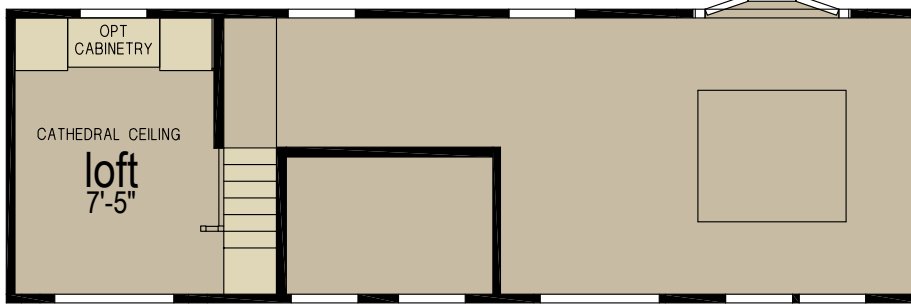


## GUEST CLOSET / STACK WASH/DRY

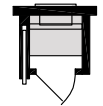
W/ 1/4 ROUND WINDOWS STD



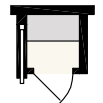
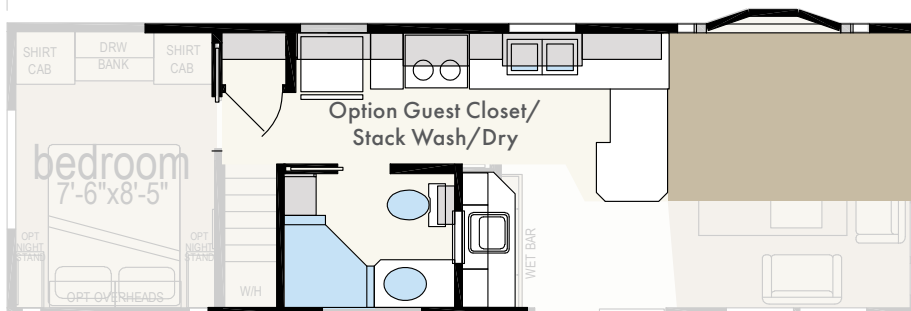
OPTION  
TANKLESS  
W/H



## LOFT STORAGE AREA



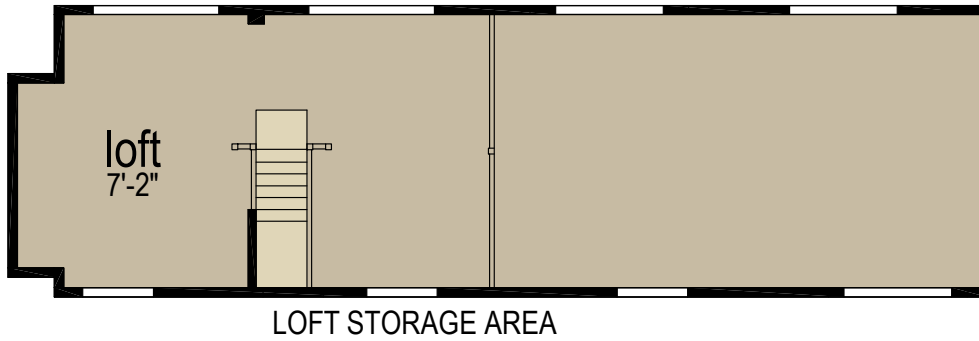
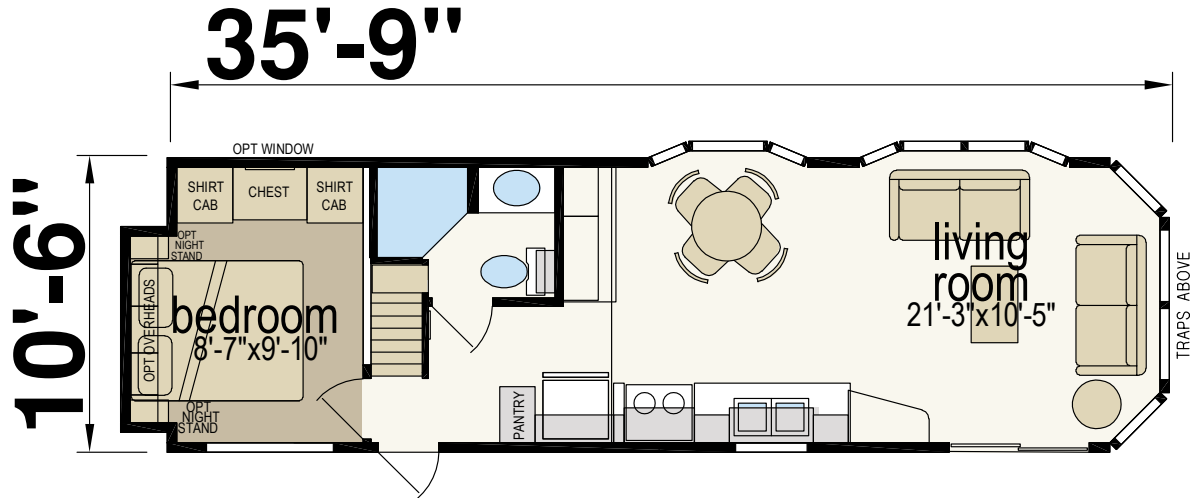
OPTION PANTRY/  
TANKLESS W/H



ALTERNATE  
PANTRY

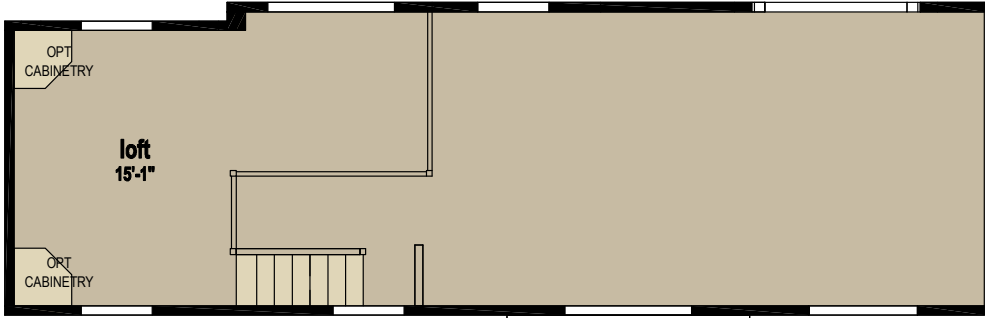
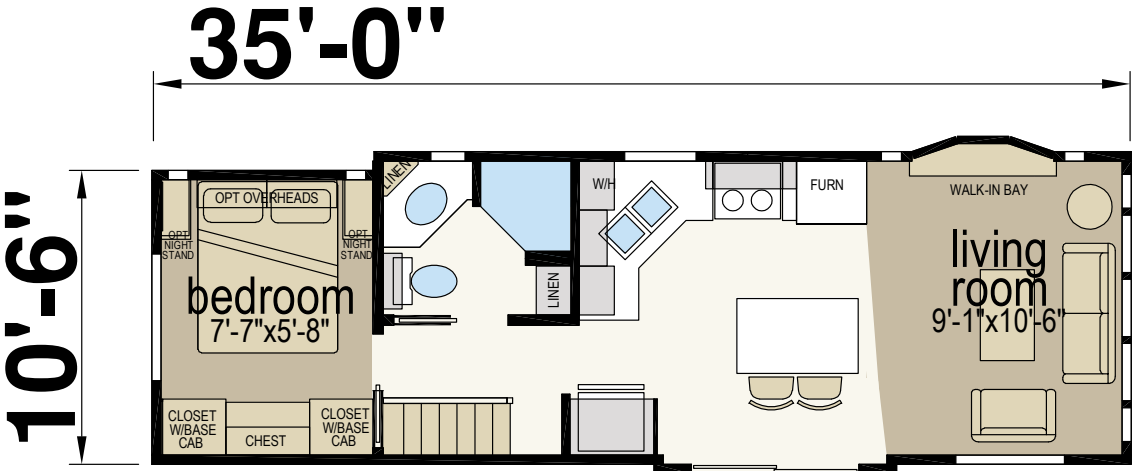
# 1913

One Bed | One Bath | 399 sq. ft.

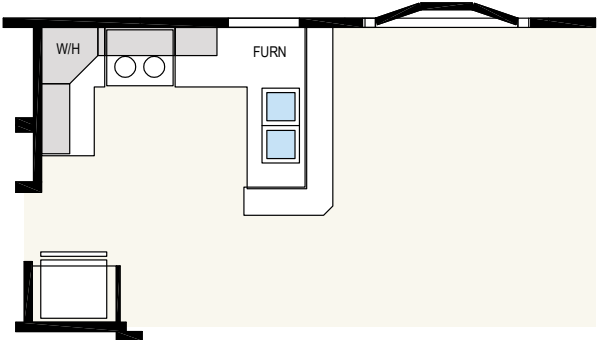


# 1966CTP

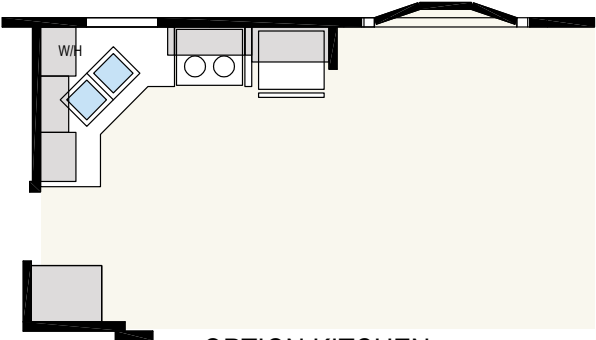
One Bed | One Bath | 399 sq. ft.



LOFT STORAGE AREA



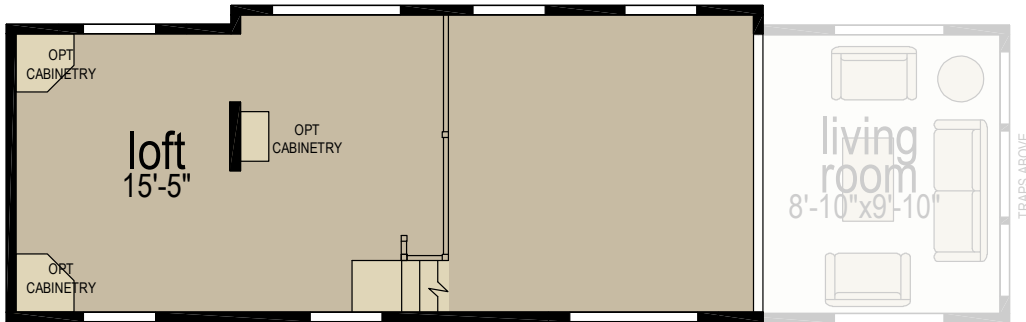
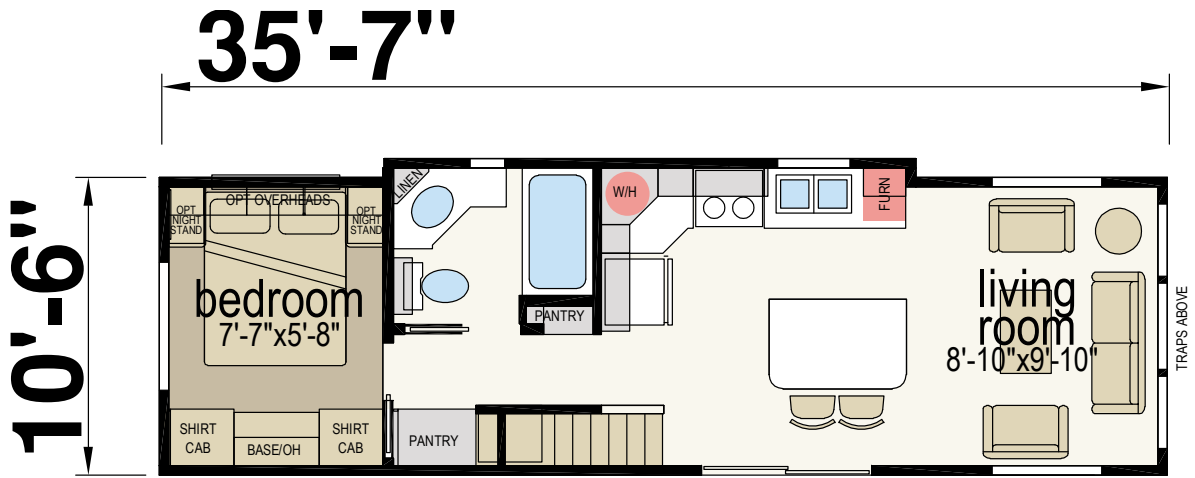
OPTION SNACK BAR KITCHEN



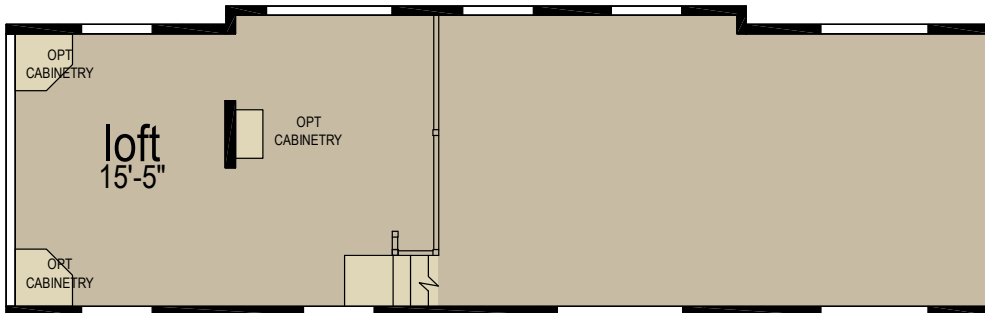
OPTION KITCHEN

# 1964CTP

One Bed | One Bath | 399 sq. ft.

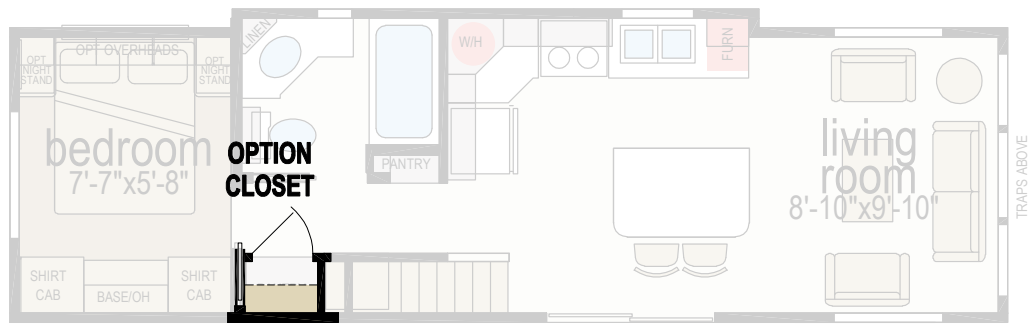


LOFT STORAGE AREA

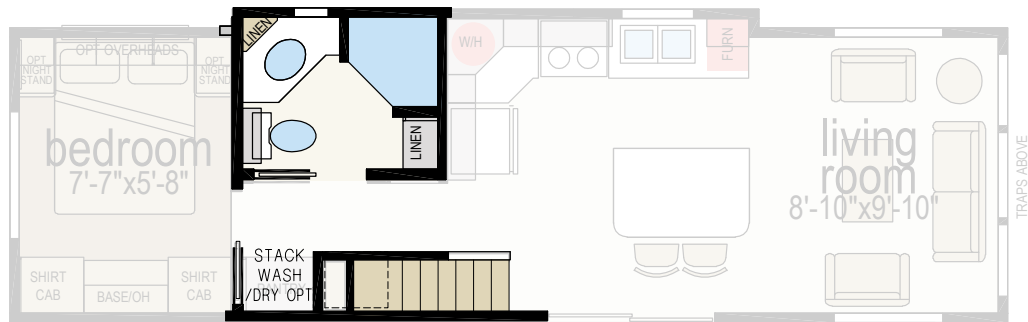


OPTION LOFT STORAGE AREA/CLERESTORY

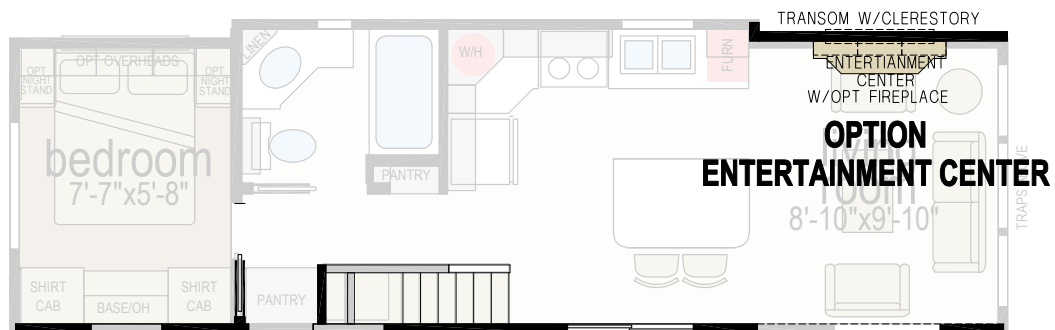




**OPTION  
CORNER SHOWER BATH**



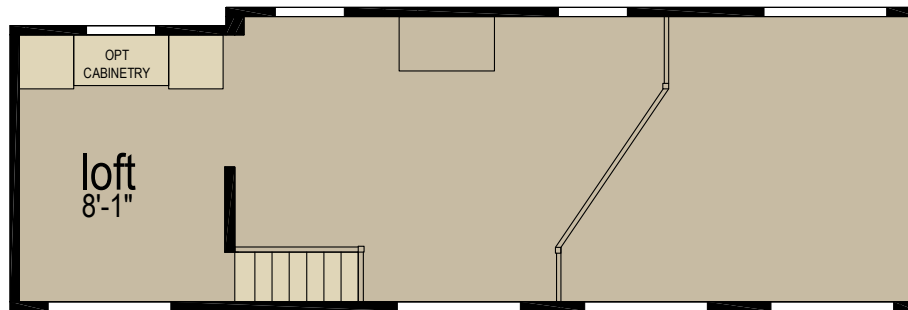
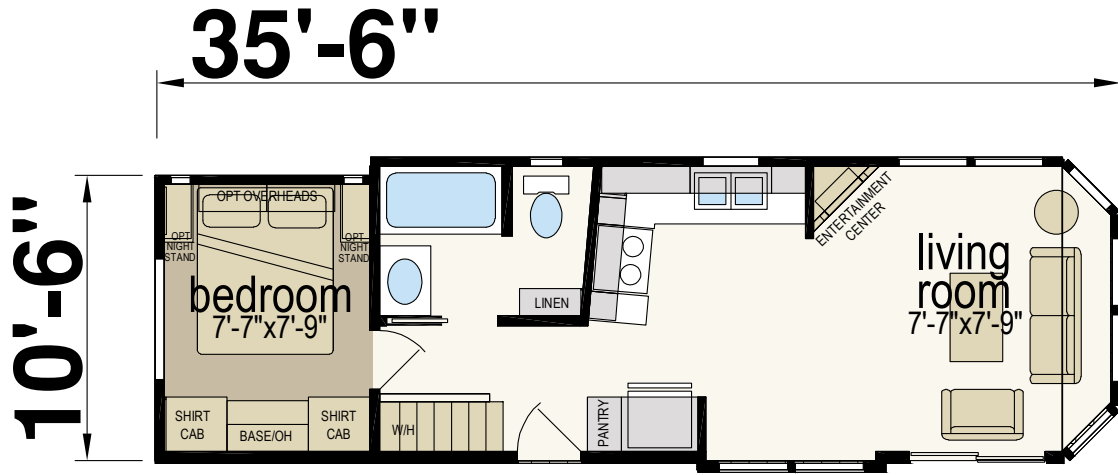
**OPTION WASHER/DRYER**



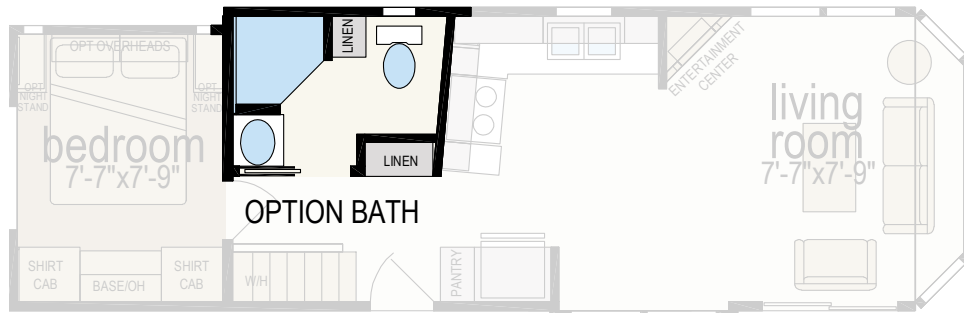
**OPTION EXTERIOR DOOR**

# 1974CTP

One Bed | One Bath | 399 sq. ft.



LOFT STORAGE AREA



# SHORE PARK

## STANDARD FEATURES

### EXTERIOR & CONSTRUCTION

- ANSI 119.5 Approved
- R-22 Roof Insulation
- 30-Year Architectural Shingles with Ridge Vent
- Textured Cathedral Ceiling Throughout
- 7'-6" Sidewall Height (Per Floor Plan)
- 2 X 4 Sidewalls – 16" O.C.
- R-11 Wall and Floor Insulation
- 2 X 6 Floor Joists – 16" O.C.
- Insulated Sliding Glass Door
- Detachable Hitch
- Vinyl Lap Siding
- Deadbolt on Rear Door
- Single Hung Vinyl Low-E Windows
- Window Grids

### ELECTRICAL

- Exterior GFI Protected Receptacle
- Exterior Light at All Exterior Doors
- LED Interior Lighting Throughout
- Wire/Support for Paddle Fan
- CO/Smoke Detector with Battery Backup/False Alarm Control
- LP Detector
- TV Jack (In Bedroom)
- Exterior TV Jack

### HEATING & PLUMBING

- Gas Furnace
- 20-Gallon Electric Water Heater
- PEX Water Lines
- Iron Gas Piping with Shut-Off Valves
- Water Shut-Off Valves
- Fiberglass Insulated Heating Runs
- Toe-Kick Registers in Kitchen and Bath

### INTERIOR

- Upgrade Carpet – Living Areas and Bedroom
- Tack Strip and Carpet Bar
- Cornice Valance with Wood Blinds
- 2-3/4" Large Cove Molding at Ceiling
- Chandelier Dining Light
- 52" Paddle Fan
- Egress Window(s) – Bedroom
- Mirrored Wardrobe Doors with Drawers Below – Bedroom (Per Floor Plan)
- Ventilated Wire Shelving
- Hardwood Cabinet Doors and Face Frames
- 6-Panel Interior Passage Doors (Per Floor Plan)
- Pre-Finished Door Jambs
- Fire Extinguisher

### KITCHEN FEATURES

- 18 Cu. Ft. Frost-Free Refrigerator
- 30" Deluxe Gas Range
- Space-Saver Microwave / Range Vent
- Stainless Steel Sink
- Ceramic Tile Backsplash
- Single-Lever Faucet at Sink with Side Sprayer
- Hardwood Cabinet Doors and Face Frames
- 2-3/4" Large Cove Molding Above Cabinets
- Drawer Over Door Base Cabinet Construction
- Modular Cabinet System with Adjustable Shelves
- (2) Shelves in Base Cabinet
- Deluxe Cabinet Door and Drawer Hardware
- Full Extension Drawer Guides
- Cabinet Above Refrigerator
- Cornice Valance with Wood Blinds
- Vinyl Flooring

### BATH FEATURES

- Fiberglass Shower/Tub Shower with Full Surround (Per Floor Plan)
- Porcelain Sink with Overflow and Pop-Up Drain
- Ceramic Tile Backsplash
- Single-Lever Sink Faucet
- Power Vent Fan with Light (Fan Only on Loft Models)
- Elongated Porcelain Commode
- Hardwood Cabinet Doors and Face Frames
- Privacy Lock on Door
- Vinyl Flooring

Due to continuous product development and improvement, prices, specifications, and materials are subject to change without notice or obligation. Square footage and other dimensions are approximate. Exterior images may be artist renderings and are not intended to be an accurate representation of the home. Renderings, photos and floor plans may be shown with optional features or third-party additions.

# SHORE PARK

---

**SKYLINE**<sup>®</sup>

1023 US-61, Lancaster, WI 53813

(608) 723-4171

Your local Shore Park dealer is: