



ROMAN

SHADES

Effective April 1, 2019

design simplified™

TABLE OF CONTENTS

Product Overview

- Features & Benefits 2
- Collection Information 3
- Color Chart 4-6

Pricing Information

- Group 1 to Group 6 7-8

Product Information

- Size Specifications 9
- Product Specifications 10
- Product Features & Characteristics 11

FEATURES & BENEFITS



- Roman Shades are offered in a wide selection of materials from screens and blackouts to decorative fabrics. The tailored design of the flat style roman shade provides a contemporary look to any room.
- Solid stained wood headrail is durable and easy to install.
- Painted aluminum rib system creates 6 ½” folds. Both ribs and components are color coordinated to the shade material.
- Available with two operating systems – standard cordlock and continuous cord loop control for ease of operation and precise positioning when the shade is raised or lowered.
- Lift cords and tassels are color coordinated to the shade material to enhance the shade aesthetics.
- All shades come with a matching 6” valance. Outside mount shades feature valance returns to provide a more finished appearance.
- Exclusive bottom fade flap protects the face fabric from direct exposure to sunlight when the shade is raised.
- Limited Lifetime Warranty ensures your customers’ satisfaction.

COLLECTION INFORMATION

| Material Name | Color Family | Price Group | Material Width | Flat Roman | Fabric Content | Opacity | Flame Retardant | Greenguard Certified | Bacterial & Fungal Resistant |
|--------------------|--------------|-------------|----------------|------------|---------------------------------------|---------|-----------------|----------------------|------------------------------|
| 1% E Screen | R80 | 3 | 122" | Yes | 36% Fiberglass, 64% Vinyl | D | YES | YES | YES |
| 1% Sheerweave 2500 | R01 | 4 | 126" | Yes | 37% Fiberglass, 63% Vinyl | D | YES | YES | YES |
| 1% Sheerweave 2701 | RS21 | 4 | 126" | Yes | 36% Fiberglass, 64% Vinyl | D | YES | YES | YES |
| 1% Sheerweave 5000 | P5001 | 3 | 98" | Yes | 49% Polyester, 51% Vinyl | D | YES | YES | YES |
| 1% Toka | RS11 | 3 | 118" | Yes | 30% Polyester, 70% PVC | D | YES | YES | YES |
| 3% E Screen | R81 | 3 | 122" | Yes | 36% Fiberglass, 64% Vinyl | C | YES | YES | YES |
| 3% M Screen | R58 | 3 | 122" | Yes | 36% Fiberglass, 64% Vinyl | C | YES | YES | YES |
| 3% Sheerweave 2410 | R06 | 3 | 126" | Yes | 35% fiberglass 65% Vinyl | C | YES | YES | YES |
| 3% Sheerweave 4400 | RS2 | 3 | 126" | Yes | 25% Polyester, 75% Vinyl on Polyester | C | YES | YES | YES |
| 3% T Screen | RS16 | 3 | 98" | Yes | 36% Fiberglass, 64% Vinyl | C | YES | YES | YES |
| 4% Silver Screen | RS6 | 6 | 94" | Yes | 64% PVC, 36% Fiberglass | C | YES | YES | YES |
| 5% E Screen | R51 | 3 | 122" | Yes | 36% Fiberglass, 64% Vinyl | B | YES | YES | YES |
| 5% M Screen Deco | R61 | 3 | 98" | Yes | 36% Fiberglass, 64% Vinyl | B | YES | YES | YES |
| 5% Sheerweave 2390 | RS1 | 3 | 126" | Yes | 35% Fiberglass, 65% Vinyl | B | YES | YES | YES |
| 5% Sheerweave 4000 | R09 | 3 | 126" | Yes | 25% Polyester, 75% Vinyl on Polyester | B | YES | YES | YES |
| 7% Global Screen | RS14 | 1 | 118" | Yes | 30% Polyester, 70% PVC | B | YES | YES | YES |
| 10% E Screen | R19 | 3 | 122" | Yes | 36% Fiberglass, 64% Vinyl | A | YES | YES | YES |

| Material Name | Color Family | Price Group | Material Width | Flat Roman | Fabric Content | Opacity | Flame Retardant | Greenguard Certified | Bacterial & Fungal Resistant |
|---------------|--------------|-------------|----------------|------------|---|---------|-----------------|----------------------|------------------------------|
| Alexandria | RD4 | 5 | 78" | Yes | 100% Polyester | B | NO | NO | N/A |
| Baroque | RD5 | 5 | 78" | Yes | 65% Cotton, 35% Polyester | C | NO | NO | NO |
| Brilliance | RD8 | 5 | 118" | Yes | 100% Polyester | B | NO | NO | Yes |
| Cararra | RD6 | 1 | 110" | Yes | 100% Polyester with Acrylic Coating | C | NO | NO | N/A |
| Claudio | RD7 | 3 | 110" | Yes | 90% Polyester, 10% Cationic Polyester | C | NO | NO | NO |
| Cusco | RF6 | 6 | 110" | Yes | 100% Polyester | E | NO | NO | N/A |
| Darien | RD1 | 3 | 90" | Yes | 100% Polyester | B | NO | NO | N/A |
| Drizzle | RD2 | 4 | 94" | Yes | 89% Polyester, 11% Linen | B | NO | NO | N/A |
| Fiona | RD3 | 5 | 78" | Yes | 100% Polyester | C | NO | NO | YES |
| Hayworth | RF32 | 1 | 98" | Yes | 100% Polyester | B | NO | NO | NO |
| Illusion | RF34 | 3 | 72" | Yes | 100% Polyester | B | NO | NO | YES |
| Jasper | RF5 | 6 | 110" | Yes | 100% Polyester | C | NO | NO | N/A |
| Linview | R56 | 2 | 122" | Yes | 100% Polyester | B | NO | NO | N/A |
| Montero | RF4 | 2 | 94" | Yes | 100% Polyester with Acrylic Coating | D | NO | NO | N/A |
| Moravia | RF8 | 5 | 96" | Yes | 100% Polyester | B | NO | NO | N/A |
| Santa Cruz | RF3 | 2 | 94" | Yes | 100% Polyester | D | NO | NO | N/A |
| Sorrento | RF35 | 2 | 108" | Yes | 85.9% Polyester, 8.3% Cotton, 5.8% Flax | B | NO | NO | YES |
| Uptown | R79 | 6 | 78" | Yes | 66% Cotton, 34% Polyester | C | NO | NO | NO |



A. Glare Reducing
Softly filters light and reduces glare. Images, shapes and people can be seen clearly. Provides the least amount of light and shape screening.



B. Filtering
Filters strong light. Images, shapes and people can be seen with some clarity. Provides a modest degree of light and shape screening.



C. Shading
Significantly reduces light. Images, shapes and people cannot be seen clearly. Provides a moderate to strong degree of light and shape screening.



D. Blocking
Dramatically reduces light. Images, shapes and people are not distinguishable. Provides privacy against most all direct light and shape screening (except minimal light that may seep through closed or overlapping opaque/blackout vanes).



E. Blackout
Blocks out virtually all light (except light that may enter on the sides of the shade) for maximum privacy and darkness.

COLOR CHART

(Standard lead-time)

| Material Name | Color Name | Color # |
|--------------------|-------------------|-----------|
| 1% E Screen | Charcoal/Charcoal | R8009 |
| 1% E Screen | Charcoal/Cocoa | R8007 |
| 1% E Screen | Charcoal/Grey | R8008 |
| 1% E Screen | White | R8004 |
| 1% E Screen | White/Linen | R8005 |
| 1% E Screen | White/Pearl | R8003 |
| | | |
| 1% Sheerweave 2500 | Charcoal/Alpaca | R0109 |
| 1% Sheerweave 2500 | Charcoal/Chestnut | R0104 |
| 1% Sheerweave 2500 | Charcoal | R0103 |
| 1% Sheerweave 2500 | Oyster | R0105 |
| 1% Sheerweave 2500 | Oyster/Beige | R0106 |
| 1% Sheerweave 2500 | Oyster/Pearl Gray | R0107 |
| | | |
| 1% Sheerweave 2701 | Oyster | RS2101 |
| 1% Sheerweave 2701 | Oyster/Beige | RS2102 |
| 1% Sheerweave 2701 | Oyster/Charcoal | RS2106 |
| 1% Sheerweave 2701 | Oyster/Chestnut | RS2105 |
| 1% Sheerweave 2701 | Oyster/Pearl Gray | RS2103 |
| 1% Sheerweave 2701 | Oyster/Pewter | RS2104 |
| | | |
| 1% Sheerweave 5000 | Jute/Coffee | P5001 R88 |
| 1% Sheerweave 5000 | Jute/Flax | P5001 R86 |
| | | |
| 1% Toka | Bone | RS11002 |
| 1% Toka | Platinum | RS11003 |
| 1% Toka | White | RS11001 |
| | | |
| 3% E Screen | Charcoal/Charcoal | R8102 |
| 3% E Screen | Charcoal/Cocoa | R8107 |
| 3% E Screen | Charcoal/Grey | R8108 |
| 3% E Screen | White/Linen | R8104 |
| 3% E Screen | White/Pearl | R8105 |
| 3% E Screen | White/White | R8106 |

| Material Name | Color Name | Color # |
|--------------------|-------------------|---------|
| 3% M Screen | Charcoal/Apricot | R5803 |
| 3% M Screen | Charcoal/Charcoal | R5805 |
| 3% M Screen | Charcoal/Sable | R5808 |
| 3% M Screen | White Linen | R5807 |
| 3% M Screen | White/White | R5801 |
| | | |
| 3% Sheerweave 2410 | Charcoal | R0603 |
| 3% Sheerweave 2410 | Charcoal/Alpaca | R0609 |
| 3% Sheerweave 2410 | Charcoal/Chestnut | R0604 |
| 3% Sheerweave 2410 | Oyster | R0605 |
| 3% Sheerweave 2410 | Oyster/Beige | R0606 |
| 3% Sheerweave 2410 | Oyster/Pearl Gray | R0607 |
| | | |
| 3% Sheerweave 4400 | Alabaster | RS2200 |
| 3% Sheerweave 4400 | Chalk | RS2202 |
| 3% Sheerweave 4400 | Greystone | RS2201 |
| 3% Sheerweave 4400 | Pewter | RS2203 |
| | | |
| 3% T Screen | Charcoal/Charcoal | RS16005 |
| 3% T Screen | Charcoal/Grey | RS16006 |
| 3% T Screen | Sable/Charcoal | RS16003 |
| 3% T Screen | White/Pearl | RS16004 |
| 3% T Screen | White/Sable-Straw | RS16002 |
| 3% T Screen | White/White | RS16001 |
| | | |
| 4% Silver Screen | Beige | RS6501 |
| 4% Silver Screen | Black | RS6504 |
| 4% Silver Screen | Bronze | RS6503 |
| 4% Silver Screen | Light Grey | RS6500 |
| 4% Silver Screen | White | RS6502 |

| Material Name | Color Name | Color # |
|--------------------|-------------------|---------|
| 5% E Screen | Charcoal/Charcoal | R5105 |
| 5% E Screen | Charcoal/Cocoa | R5104 |
| 5% E Screen | Charcoal/Grey | R5110 |
| 5% E Screen | Pure White | R5101 |
| 5% E Screen | White/Linen | R5108 |
| 5% E Screen | White/Pearl | R5109 |
| | | |
| 5% M Screen Deco | Flagstone | R6107 |
| 5% M Screen Deco | Harvest Wheat | R6104 |
| 5% M Screen Deco | Hazelnut | R6105 |
| 5% M Screen Deco | Parchment | R6106 |
| 5% M Screen Deco | River Rock | R6102 |
| 5% M Screen Deco | Tumbleweed | R6103 |
| | | |
| 5% Sheerweave 2390 | Charcoal | RS1105 |
| 5% Sheerweave 2390 | Charcoal/Alpaca | RS1106 |
| 5% Sheerweave 2390 | Charcoal/Chestnut | RS1104 |
| 5% Sheerweave 2390 | Charcoal/Gray | RS1102 |
| 5% Sheerweave 2390 | Oyster | RS1100 |
| 5% Sheerweave 2390 | Oyster/Beige | RS1101 |
| 5% Sheerweave 2390 | Oyster/Pearl Gray | RS1103 |
| | | |
| 5% Sheerweave 4000 | Alabaster | R0901 |
| 5% Sheerweave 4000 | Chalk | R0902 |
| 5% Sheerweave 4000 | Granite | R0906 |
| 5% Sheerweave 4000 | Greystone | R0904 |
| | | |
| 7% Global Screen | Barley | RS14002 |
| 7% Global Screen | Canvas | RS14001 |
| 7% Global Screen | Platinum | RS14003 |
| | | |
| 10% E Screen | Charcoal/Charcoal | R1902 |
| 10% E Screen | Charcoal/Cocoa | R1907 |
| 10% E Screen | White Pearl | R1908 |
| 10% E Screen | White/Linen | R1905 |
| 10% E Screen | White/White | R1906 |

COLOR CHART

(Standard lead-time)

| Material Name | Color Name | Color # |
|---------------|--------------|---------|
| Alexandria | Charcoal | RD403 |
| Alexandria | Duck Egg | RD402 |
| Alexandria | Oatmeal | RD401 |
| | | |
| Baroque | Champagne | RD501 |
| Baroque | Cyan | RD502 |
| Baroque | Ebony | RD504 |
| Baroque | Ruby | RD503 |
| | | |
| Brilliance | Birch | RD802 |
| Brilliance | Dove Gray | RD804 |
| Brilliance | Pearl | RD801 |
| Brilliance | Putty | RD803 |
| Brilliance | Pyrite | RD805 |
| Brilliance | Steel | RD806 |
| | | |
| Carrara | Coal | RD606 |
| Carrara | Saddle | RD604 |
| Carrara | Silver | RD603 |
| Carrara | Storm | RD605 |
| Carrara | Tusk | RD602 |
| Carrara | White | RD601 |
| | | |
| Claudio | Ash | RD706 |
| Claudio | Cloud | RD701 |
| Claudio | Cream | RD702 |
| Claudio | Gray Matters | RD708 |
| Claudio | Mink | RD704 |
| Claudio | Mist | RD703 |
| Claudio | Reef | RD705 |
| Claudio | Sailcloth | RD707 |
| | | |
| Cusco | Chateau | RF6400 |
| Cusco | Coconut Husk | RF6401 |
| Cusco | Shadow Ridge | RF6402 |

| Material Name | Color Name | Color # |
|---------------|---------------|---------|
| Darien | Bark | RD106 |
| Darien | Beige | RD101 |
| Darien | Charcoal | RD107 |
| Darien | Driftwood | RD103 |
| Darien | Mocha | RD104 |
| Darien | Sand | RD102 |
| Darien | Sea Mist | RD105 |
| | | |
| Drizzle | Flax | RD201 |
| Drizzle | Graphite | RD205 |
| Drizzle | Hessian | RD202 |
| Drizzle | Iron | RD204 |
| Drizzle | Tweed | RD203 |
| | | |
| Fiona | Grey | RD303 |
| Fiona | Sand | RD301 |
| Fiona | Smokey Blue | RD302 |
| | | |
| Hayworth | Linen | RF32001 |
| Hayworth | White | RF32000 |
| | | |
| Illusion | Dove | RF34003 |
| Illusion | Flannel | RF34004 |
| Illusion | Ivory | RF34002 |
| Illusion | Snow | RF34001 |
| | | |
| Jasper | Country Linen | RF5303 |
| Jasper | Heather | RF5302 |
| Jasper | Storm Cloud | RF5300 |
| Jasper | Tweed | RF5301 |

| Material Name | Color Name | Color # |
|---------------|------------------|---------|
| Linview | Ash | R5613 |
| Linview | Cabana Wood | R5603 |
| Linview | Fog | R5611 |
| Linview | Macadamia | R5606 |
| Linview | Midnight Black | R5615 |
| Linview | Morning Light | R5602 |
| Linview | Navy | R5610 |
| Linview | New York Grey | R5614 |
| Linview | Pale Lapis | R5609 |
| Linview | Porpoise | R5612 |
| Linview | Rural Green | R5607 |
| Linview | Skyward | R5608 |
| Linview | Slate | R5605 |
| Linview | Summer White | R5601 |
| Linview | Weathered Walnut | R5604 |
| Linview | Sea Smoke | R5616 |
| Linview | Pale Oak | R5617 |
| Linview | Soft Linen | R5618 |
| | | |
| Montero | Dark Walnut | RF4200 |
| Montero | Java Coast | RF4201 |
| Montero | Wicker Basket | RF4202 |
| | | |
| Moravia | Coastal | RF8602 |
| Moravia | Countryside | RF8600 |
| Moravia | Seabreeze | RF8601 |
| | | |
| Santa Cruz | Bunglehouse Blue | RF3101 |
| Santa Cruz | Manchester | RF3100 |
| Santa Cruz | Night Sky | RF3106 |
| Santa Cruz | Rainforest | RF3107 |
| | | |
| Sorrento | Bisque | RF35002 |
| Sorrento | Linen | RF35001 |
| Sorrento | Stucco | RF35003 |
| | | |
| Uptown | Sterling | R7902 |

COLOR CHART
(12 business day lead-time)

| Material Name | Color Name | Color # |
|--------------------|------------------|---------|
| 1% Sheerweave 2500 | Beige | R01Q20 |
| 1% Sheerweave 2500 | Beige/Pearl Gray | R01Q21 |
| 1% Sheerweave 2500 | Charcoal/Gray | R01V22 |
| 1% Sheerweave 2500 | Pearl Gray | R01V20 |
| | | |
| 1% Sheerweave 2701 | Charcoal | RS21V21 |
| 1% Sheerweave 2701 | Charcoal/Brown | RS21V66 |
| 1% Sheerweave 2701 | Charcoal/Gray | RS21V22 |
| 1% Sheerweave 2701 | Charcoal/Slate | RS21V64 |
| 1% Sheerweave 2701 | Charcoal/Taupe | RS21V65 |
| | | |
| 3% Sheerweave 2410 | Beige | R06Q20 |
| 3% Sheerweave 2410 | Beige/Pearl Gray | R06Q21 |
| 3% Sheerweave 2410 | Charcoal/Gray | R06V22 |
| 3% Sheerweave 2410 | Pearl Gray | R06V20 |
| | | |
| 3% Sheerweave 4400 | Ash | RS2U64 |
| 3% Sheerweave 4400 | Ebony | RS2U65 |
| 3% Sheerweave 4400 | Granite | RS2U62 |
| 3% Sheerweave 4400 | Pebblestone | RS2U60 |
| 3% Sheerweave 4400 | Tobacco | RS2U66 |
| | | |
| 5% Sheerweave 2390 | Beige | RS1Q20 |
| 5% Sheerweave 2390 | Beige/Pearl Gray | RS1Q21 |
| 5% Sheerweave 2390 | Pearl Gray | RS1V20 |
| | | |
| 5% Sheerweave 4000 | Ash | R09U64 |
| 5% Sheerweave 4000 | Ebony | R09U65 |
| 5% Sheerweave 4000 | Pebblestone | R09U60 |
| 5% Sheerweave 4000 | Pewter | R09U63 |
| 5% Sheerweave 4000 | Tobacco | R09U66 |

GROUP 1

- 7% Global Screen
- Hayworth
- Cararra

| WIDTH TO: | 24" | 36" | 48" | 60" | 72" | 84" | 96" |
|-------------------|-------|-----|-----|-----|-----|-----|-----|
| HEIGHT TO: | | | | | | | |
| 36" | \$195 | 219 | 250 | 279 | 304 | 334 | 363 |
| 48" | 204 | 233 | 266 | 301 | 328 | 362 | 396 |
| 61" | 216 | 249 | 288 | 327 | 362 | 401 | 440 |
| 72" | 226 | 266 | 311 | 355 | 394 | 439 | 484 |
| 78" | 235 | 278 | 327 | 376 | 419 | 468 | 515 |
| 84" | 245 | 299 | 355 | 413 | 466 | 524 | 582 |
| 96" | 252 | 311 | 368 | 429 | 485 | 546 | 608 |

GROUP 2

- Linview
- Santa Cruz
- Montero
- Sorrento

| WIDTH TO: | 24" | 36" | 48" | 60" | 72" | 84" | 96" |
|-------------------|-------|-----|-----|-----|-----|-----|-----|
| HEIGHT TO: | | | | | | | |
| 36" | \$201 | 229 | 263 | 295 | 324 | 356 | 389 |
| 48" | 212 | 244 | 283 | 320 | 352 | 391 | 428 |
| 61" | 225 | 264 | 308 | 352 | 391 | 435 | 478 |
| 72" | 238 | 284 | 334 | 384 | 429 | 479 | 529 |
| 78" | 248 | 297 | 353 | 409 | 458 | 512 | 568 |
| 84" | 255 | 307 | 366 | 424 | 478 | 535 | 593 |
| 96" | 262 | 317 | 379 | 440 | 495 | 557 | 619 |

- 1% E Screen
- 1% Sheerweave 5000
- 1% Toka
- 10% E Screen
- 3% E Screen
- 3% M Screen
- 3% Sheerweave 2410
- 3% Sheerweave 4400
- 3% T Screen
- 5% E Screen
- 5% M Screen Deco
- 5% Sheerweave 2390
- 5% Sheerweave 4000
- Claudio
- Darien
- Illusion

GROUP 3

| WIDTH TO: | 24" | 36" | 48" | 60" | 72" | 84" | 96" |
|-------------------|-------|-----|-----|-----|-----|-----|-----|
| HEIGHT TO: | | | | | | | |
| 36" | \$210 | 245 | 284 | 321 | 354 | 392 | 430 |
| 48" | 225 | 264 | 308 | 352 | 392 | 435 | 479 |
| 61" | 240 | 287 | 338 | 391 | 438 | 489 | 541 |
| 72" | 257 | 311 | 370 | 430 | 484 | 543 | 603 |
| 78" | 269 | 330 | 394 | 461 | 520 | 586 | 652 |
| 84" | 277 | 342 | 411 | 480 | 544 | 613 | 684 |
| 96" | 285 | 352 | 426 | 500 | 567 | 640 | 714 |

* MAXIMUM SHADE HEIGHT IS 78"

| OPTIONS: NO CHARGE |
|--|
| <ul style="list-style-type: none"> • Valance Returns for Outside Mounts • Control Positions (R or L) • Extension Brackets • Cord Cleats • Spacer Blocks |

| OPTIONS: EXTRA CHARGE |
|---|
| <ul style="list-style-type: none"> • Continuous Cord Loop Surcharge add \$54 per shading • 2-on-1 Headrail Standard Cordlock – price as 2 separate shades and add together • 2-on-1 Headrail with Continuous Cord Loop – price as 2 separate shades and add \$108 |

ALTHOUGH WE MAINTAIN STRICT STANDARDS WE CANNOT GUARANTEE EXACT DYE LOTS.

- 1% Sheerweave 2500
- 1% Sheerweave 2701
- Drizzle

GROUP 4

| WIDTH TO: | 24" | 36" | 48" | 60" | 72" | 84" | 96" |
|-------------------|-------|-----|-----|-----|-----|-----|-----|
| HEIGHT TO: | | | | | | | |
| 36" | \$218 | 255 | 296 | 337 | 375 | 415 | 456 |
| 48" | 233 | 277 | 325 | 373 | 417 | 465 | 513 |
| 61" | 252 | 303 | 360 | 417 | 469 | 525 | 582 |
| 72" | 268 | 328 | 394 | 461 | 520 | 586 | 652 |
| 78" | 284 | 351 | 423 | 495 | 562 | 636 | 708 |
| 84" | 293 | 364 | 441 | 518 | 589 | 666 | 744 |
| 96" | 302 | 377 | 458 | 539 | 615 | 696 | 778 |

- Alexandria
- Baroque
- Brilliance
- Fiona
- Moravia

GROUP 5

| WIDTH TO: | 24" | 36" | 48" | 60" | 72" | 84" | 96" |
|-------------------|-------|-----|-----|-----|-----|-----|-----|
| HEIGHT TO: | | | | | | | |
| 36" | \$239 | 286 | 338 | 390 | 436 | 489 | 540 |
| 48" | 259 | 316 | 377 | 439 | 495 | 557 | 618 |
| 61" | 283 | 351 | 424 | 497 | 564 | 637 | 710 |
| 72" | 307 | 385 | 470 | 554 | 633 | 718 | 803 |
| 78" | 327 | 415 | 509 | 603 | 691 | 786 | 880 |
| 84" | 355 | 455 | 534 | 635 | 729 | 829 | 928 |
| 96" | 369 | 492 | 607 | 723 | 764 | 871 | 976 |

- 4% Silver Screen
- Cusco
- Jasper
- Uptown

GROUP 6

| WIDTH TO: | 24" | 36" | 48" | 60" | 72" | 84" | 96" |
|-------------------|-------|-----|-----|-----|-----|------|------|
| HEIGHT TO: | | | | | | | |
| 36" | \$256 | 313 | 373 | 433 | 490 | 550 | 611 |
| 48" | 281 | 348 | 421 | 494 | 561 | 633 | 706 |
| 61" | 310 | 391 | 478 | 563 | 645 | 730 | 817 |
| 72" | 338 | 433 | 533 | 633 | 729 | 829 | 930 |
| 78" | 362 | 469 | 581 | 694 | 799 | 912 | 1024 |
| 84" | 377 | 490 | 610 | 729 | 842 | 961 | 1080 |
| 96" | 391 | 511 | 637 | 763 | 883 | 1010 | 1136 |

* MAXIMUM SHADE HEIGHT IS 78"

| OPTIONS: NO CHARGE |
|--|
| <ul style="list-style-type: none"> • Valance Returns for Outside Mounts • Control Positions (R or L) • Extension Brackets • Cord Cleats • Spacer Blocks |

| OPTIONS: EXTRA CHARGE |
|--|
| <ul style="list-style-type: none"> • Continuous Cord Loop Surcharge add \$54 per shading • 2-on-1 Headrail Standard Cordlock – price as 2 separate shades and add together • 2-on-1 Headrail with Continuous Cord Loop – price as 2 separate shades and add \$108 |

ALTHOUGH WE MAINTAIN STRICT STANDARDS WE CANNOT GUARANTEE EXACT DYE LOTS.

PRODUCT SIZE SPECIFICATIONS

Minimum Ordered Width: Standard Cordlock – 15"
 Continuous Cord Loop – 22"
 2 on 1 Headrail – Standard Cordlock and Continuous Cord Loop – 44"

Minimum Ordered Height: Standard Cordlock – 24"
 Continuous Cord Loop – 24"
 2 on 1 Headrail – Standard Cordlock and Continuous Cord Loop – 24"

| Material Name | Fabric Code | Roll Width | Standard Cordlock | | Continuous Cord Loop | | 2 on 1 Headrail - Standard Cordlock & Continuous Cord Loop | |
|--------------------|-------------|------------|-------------------|------------|----------------------|------------|--|------------|
| | | | Max Width | Max Height | Max Width | Max Height | Max Width | Max Height |
| 1% E Screen | R80 | 122" | 96" | 96" | 96" | 96" | 120" | 96" |
| 1% Sheerweave 2500 | R01 | 126" | 96" | 96" | 96" | 96" | 120" | 96" |
| 1% Sheerweave 2701 | RS21 | 126" | 96" | 96" | 96" | 96" | 120" | 96" |
| 1% Sheerweave 5000 | P5001 | 98" | 96" | 96" | 96" | 96" | 120" | 96" |
| 1% Toka | RS11 | 118" | 72" | 78" | 72" | 78" | 120" | 78" |
| 3% E Screen | R81 | 122" | 96" | 96" | 96" | 96" | 120" | 96" |
| 3% M Screen | R58 | 122" | 96" | 96" | 96" | 96" | 120" | 96" |
| 3% Sheerweave 2410 | R06 | 126" | 96" | 96" | 96" | 96" | 120" | 96" |
| 3% Sheerweave 4400 | RS2 | 126" | 72" | 78" | 72" | 78" | 120" | 78" |
| 3% T Screen | RS16 | 98" | 96" | 96" | 96" | 96" | 120" | 96" |
| 4% Silver Screen | RS6 | 94" | 94" | 96" | 94" | 96" | 120" | 96" |
| 5% E Screen | R51 | 122" | 96" | 96" | 96" | 96" | 120" | 96" |
| 5% M Screen Deco | R61 | 98" | 96" | 96" | 96" | 96" | 120" | 96" |
| 5% Sheerweave 2390 | RS1 | 126" | 96" | 96" | 96" | 96" | 120" | 96" |
| 5% Sheerweave 4000 | R09 | 126" | 72" | 78" | 72" | 78" | 120" | 78" |
| 7% Global Screen | RS14 | 118" | 72" | 78" | 72" | 78" | 120" | 78" |
| 10% E Screen | R19 | 122" | 96" | 96" | 96" | 96" | 120" | 96" |
| Alexandria | RD4 | 78" | 76" | 96" | 76" | 96" | 120" | 96" |
| Baroque | RD5 | 78" | 76" | 96" | 76" | 96" | 120" | 96" |
| Brilliance | RD8 | 110" | 96" | 96" | 96" | 96" | 120" | 96" |
| Cararra | RD6 | 110" | 96" | 96" | 96" | 96" | 120" | 96" |
| Claudio | RD7 | 110" | 96" | 96" | 96" | 96" | 120" | 96" |
| Cusco | RF6 | 110" | 72" | 78" | 72" | 78" | 120" | 78" |
| Darien | RD1 | 90" | 72" | 72" | 72" | 72" | 120" | 72" |
| Drizzle | RD2 | 94" | 76" | 96" | 76" | 96" | 120" | 96" |
| Fiona | RD3 | 78" | 76" | 96" | 76" | 96" | 120" | 96" |
| Hayworth | RF32 | 98" | 72" | 72" | 72" | 72" | 120" | 72" |
| Illusion | RF34 | 72" | 72" | 78" | 72" | 78" | 120" | 78" |
| Jasper | RF5 | 110" | 72" | 78" | 72" | 78" | 120" | 78" |
| Linview | R56 | 94" | 122" | 78" | 72" | 78" | 120" | 78" |
| Montero | RF4 | 94" | 72" | 78" | 72" | 78" | 120" | 78" |
| Moravia | RF8 | 96" | 72" | 78" | 72" | 78" | 120" | 78" |
| Santa Cruz | RF3 | 94" | 72" | 78" | 72" | 78" | 120" | 78" |
| Sorrento | RF35 | 108" | 72" | 78" | 72" | 78" | 120" | 78" |
| Uptown | R79 | 78" | 72" | 78" | 72" | 78" | 120" | 78" |

PRODUCT SPECIFICATIONS

- **Shade Folds** may be slightly uneven from side to side and may vary from shade to shade.
- **Pattern Matching** at seam will not be exact and may be interrupted.
- **Top Shade Fold** will vary in size depending upon shade length.
- **Decorative, Room-Darkening and Blackout** materials may need to hang in the window for several days to allow the material to relax and remove any wrinkles or creases from being compressed in the packaging.

FINISHED DIMENSIONS

Adjustments are taken from ordered dimensions and may vary slightly.

MOUNTING REQUIREMENTS

Use a metal tape measure for all measurements.

STANDARD CORDLOCK

| Inside (IB) Mount | |
|----------------------------------|----------------|
| Headrail, Valance & Fabric Width | - 1/2" |
| Shade Height | ordered height |
| Outside (OB) & Ceiling Mount | |
| Headrail Width | ordered width |
| Valance Width * | + 1" |
| Fabric Width | ordered width |
| Shade Height | ordered height |
| 2 on 1 (and 3 on 1) Headrail | |
| Gap Between Panels | - 1/2" |

| | |
|--|-----------------|
| Inside (IB) Mount | 1-1/2" Headrail |
| Minimum Mounting Depth | 1-1/2" |
| Minimum Mounting Depth, Flush Mount ** | 2-1/4" |
| Outside (OB) Mount | 1-1/2" Headrail |
| Minimum Flat Vertical Surface | 1" |

CONTINUOUS CORD LOOP

| Inside (IB) Mount | |
|------------------------------|----------------|
| Headrail & Valance Width | - 1/2" |
| Fabric Width | 1/2" |
| Shade Height | ordered height |
| Outside (OB) & Ceiling Mount | |
| Headrail Width | + 1/2" |
| Valance Width * | + 1-1/2" |
| Fabric Width | ordered width |
| Shade Height | ordered height |

| 2 on 1 (and 3 on 1) Headrail | |
|------------------------------|--------|
| Gap Between Panels | - 1/2" |

Note: Cord Loop Shades have adjusted IB width deductions and OB width additions to allow operational clearance for the cord loop and safety tensioner.

| | |
|--|-----------------|
| Inside (IB) Mount | 2-1/2" Headrail |
| Minimum Mounting Depth | 1-1/2" |
| Minimum Mounting Depth, Flush Mount ** | 3-1/4" |
| Outside (OB) Mount | 2-1/2" Headrail |
| Minimum Flat Vertical Surface | 1" |

| Continuous Cord Loop Chart | |
|---------------------------------|------------------|
| Shade Height | Cord Loop Length |
| 12" to 18" | 12" |
| 18-1/8" to 26" | 18" |
| 26-1/8" to 38" | 24" |
| 38-1/8" to 50" | 36" |
| 50-1/8" to 62" | 48" |
| 62-1/8" to 74" | 60" |
| 74-1/8" to 86" | 72" |
| 86-1/8" to 98" | 84" |
| 98-1/8" to 120" | 96" |
| special request, long cord loop | 120" |
| special request, long cord loop | 144" |

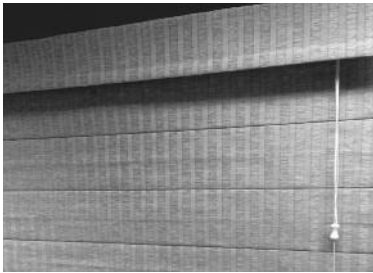
FINISHED DIMENSION & MOUNTING NOTES

Note: Ceiling mount shades are OB by default and have the same finished dimensions. IB shades may also be "TOP" mounted using the standard L-style brackets or using the optional Flat brackets.

* OB Valances and returns are attached using valance return. The OB valance width additions indicated above create a "cornice style" box for improved appearance and operation.

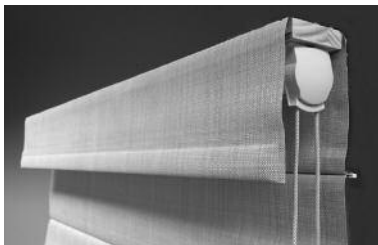
** The flush mount depth requirements indicated above include space for the material attached to the front (valance) and back (shade) sides of the headrail. These are AVERAGE depths as the different materials have varying degrees of thickness. Verify your individual shade's depth before mounting, then position brackets accordingly for an EXACT flush mount.

PRODUCT FEATURES & CHARACTERISTICS



STANDARD CORDLOCK SYSTEM

- Material attaches to the back of the headrail and raises in soft folds. Standard valance attaches to the front of the headrail to conceal the shade hardware.
- The lift cord is located behind the valance and in front of the shade material for easy access.
- Right side control position is standard – left side control position is optional.
- Valance is 6" in height (4" on shades under 18" wide).

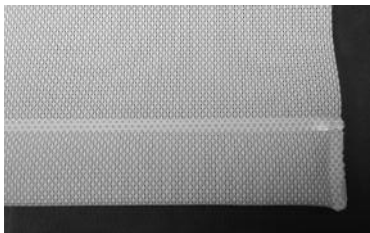


CONTINUOUS CORD LOOP SYSTEM

- Material attaches to the back of the headrail and raises in soft folds. Standard valance attaches to the front of the headrail to conceal the shade hardware.
- Allows for easier shade operation, especially for larger shades.
- Cord loop length remains constant when shade is operated.
- Cords and tensioner are color coordinated.
- Valance is 6" in height.

2-ON-1 HEADRAIL

- Material attaches to the back of the headrail and raises in soft folds. Standard valance attaches to the front of the headrail to conceal the shade hardware.
- Available for both Standard Cordlock System and Continuous Cord Loop System shades.
- 2-on-1 Headrail allows two shades to be on the same headrail for independently control and more practicality.
- One continuous valance comes with 2-on-1 headrail.
- Valance is 6" in height.



BOTTOMRAIL

- Both bottomrail and valance have a sealed hem bar.



VALANCE RETURN ON OUTSIDE MOUNT SHADES