

# Manhole Step Quick Reference

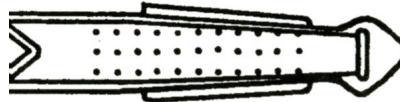
## Leg Design

Item#	Model	Tread Width	Projection	Leg Center	
004-501	PS1-PF	10 3/4"	5 3/4"	10"	
004-501-DF	PS1-PF-DF	10 1/2"	5 3/4"	10"	Double Faced
004-528	PFS-1	1- 1/8"	5 5/8"	10"	Straight Legged Step
004-510	PS2-PF	14"	6"	13"	
004-510-DF	PS2-PF-DF	13 1/2"	5 7/8"	13"	Double Faced
004-511	PS2-PFS	14"	5 1/8"	13"	
004-511-DF	PS2-PFS-DF	13 1/2"	5 1/16"	13"	Double Faced
004-512	PS2-PFSL	14"	5 1/8"	13"	
004-512-DF	PS2-PFSL-DF	13 1/2"	5"	13"	Double Faced
004-529	PFS-2	13 3/4"	5 5/8"	13"	Straight Legged Step
004-529-DF	PFS-2-DF	13 1/2"	5 7/8"	13"	Straight Legged Step Double Faced
004-516	PS3-PFC	16 3/4"	7"	16"	
004-521	PS5-PF	10 3/4"	5 3/4"	11"	
004-530-DF	PS12-PF-DF	12 1/2"	5 7/8"	12"	Double Faced
004-515	PS2-PF-HH	14"	3 1/8"	13"	Grade Ring Hand Hold*
004-510-DRP-O	PS2-PF-DRP	11 13/16"	6 7/16"	13"	Drop Front Step
004-504	PS1-B	10 1/2"	5 1/2"	10"	Brick or Block

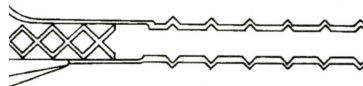
\*Grade Ring Use Only



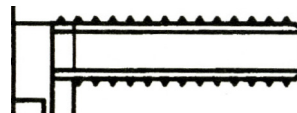
004-500	PS1	10 3/4"	5 3/4"	10"	Cast In Place Only
---------	-----	---------	--------	-----	--------------------



004-508	PS2-BG	14"	5 1/8"	13"	Brick or Block
004-509	PS2-BGLN	13 7/8"	3"	13"	Grade Ring Hand Hold



004-519	PS4-B	10 3/4"	5 3/4"	11"	Use with A-Lok Insert
004-507	PS2-B	13 3/4"	5 7/8"	13"	Use with A-Lok Insert
004-507-DF	PS2-B-DF	13 1/2"	5 5/8"	13"	Use with A-Lok Insert



004-505	PS1-DI	10 3/4"	5 3/8"	10"	Dri Cast
004-506	PS1-DIS	10 3/4"	5 3/8"	10"	Dri Cast
004-506-DF	PS1-DIS-DF	10 1/2"	5 1/4"	10"	Double Faced

