

# Aldinga Sport Park Planning

## Clubs Update



### **Presented by**

Nick Carr – Team Leader Projects

Emily Kenchington – Project Leader





# Agenda

- Welcome
- Aldinga School and Aldinga Sports Park – site integration and community outcomes
- Aldinga Sports Park projects (2020/21)
- Aldinga Sport Park concept planning
- What we've heard – conversation starters
- Open discussion
- Program / consultation
- Next steps



# Outcomes Sought

Update on school investment and community benefits

Confirm we've heard what is important and you are comfortable with our understanding

Understanding of proposed 2020/21 projects so that we can work together in planning and delivery

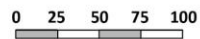
Commence concept planning process in partnership with clubs

Outline what the next few months look like





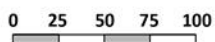
**Aldinga School and  
Aldinga Sports Park  
Site Plan**



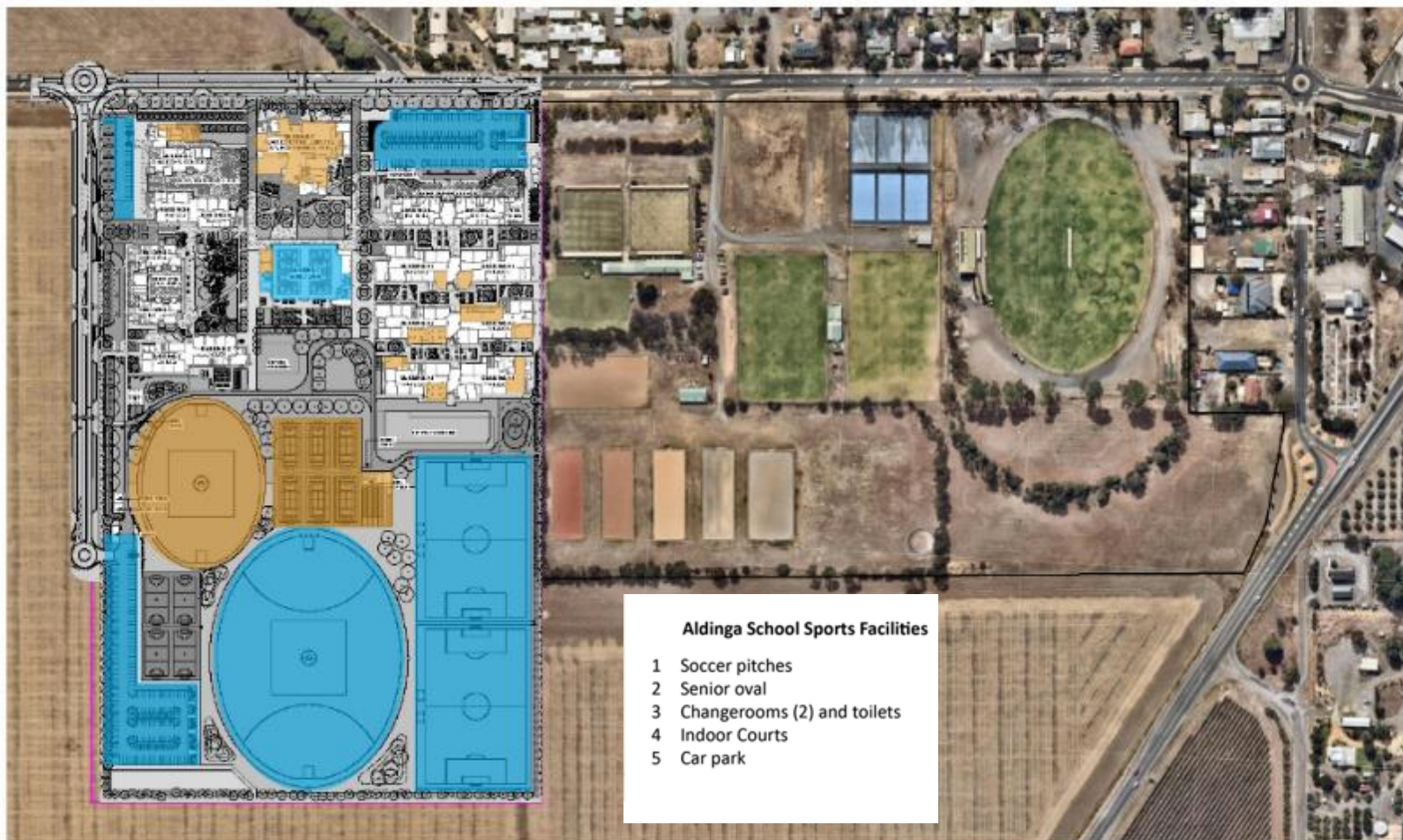




**Aldinga School and  
Aldinga Sports Park  
Site Plan**







## Aldinga School and Aldinga Sports Park Site Plan

0 25 50 75 100



Council Enhancement Deed Areas also  
available for wider community use



Areas available for community use as out-  
lined in the State brief in addition to blue  
highlighted areas

**CITY OF ONKAPARINGA**



# Aldinga Sport Park Project (2020/21)

- Federal funding: \$2.26M
- Council funding: \$2.35M

**TOTAL    \$4.61M**



# Soccer Pitch + Multi-use Sports Building



## Aldinga School Sports Facilities

- 1 Soccer pitches
- 2 Senior oval
- 3 Changerooms (2) and toilets
- 4 Indoor Courts
- 5 Car park

## Aldinga Sports Park Facilities

- 6 Indicative new sports facility (changerooms, kiosk, toilets, shelter, club space)
- 7 Indicative new soccer pitch at Aldinga Sports Park
- 8 Existing equestrian club facility
- 9 Existing equestrian arenas

**Aldinga School and  
Aldinga Sports Park  
Site Plan**

0 25 50 75 100



# Soccer Pitch + Sports Building Facility



Soccer pitch, irrigation  
and lighting



Multi-use sports building  
(includes changerooms,  
canteen, office)



Services to building



Site electrical upgrade



Other – earthworks,  
landscaping, car park/s



# Indicative Layout – Sports Building Facility





# Equestrian Relocation

Investigate viable  
options (on-site  
and off-site)

Club engagement  
(ongoing)

Decision point

Construction  
commences mid-  
2021





# Sport Facility Upgrades (2020/21)



Netball courts - rebuild / resurface



Hockey building – new transportable



Lighting - bowls, croquet, hockey



Cricket nets – relocate and new



**Next Steps:** Planning for delivery in consultation with clubs



# Aldinga Sports Park Concept Planning



Sports stay at home



Building on existing infrastructure



Upgrades to support sport growth



Site services, car parking, player amenities



Informal recreation – play and skate



Planning horizon

Short term:	0-5 years
Mid term:	5-10 years
Long term:	10yrs +





### A COMMUNITY SPORTS PARK FOR EVERYONE

- Design a space for community function and activity as well as sports activity
  - Design for passive and active sports
- Design for a range of demographic types
- Design for a regional park destination



### UNIFIED CLUBS AND MULTI-USE FACILITIES

- Design a space which brings clubs together
- Design in opportunities for multiple uses and flexibility
- Design for a future proofed 20 year plan



### COMFORTABLE SPACES MAKE ENJOYABLE PLACES

- Design for sports and non-sporting community to stop and stay
- Design legible safe shared pathways connecting to broader future linkages
- Design for comfortable spectator viewing and sporting club use

DRAFT



# ALDINGA SPORTS PARK CONCEPT PLAN

## SITE PROGRAMMING & FEATURES

### LEGEND

- NETBALL
- EQUESTRIAN
- HOCKEY + SOCCER
- BOWLS
- PLAYGROUND
- FOOTBALL + CRICKET
- CROQUET
- CLUBROOM - MULTI-USE
- CLUBROOM - BOWLS + CROQUET
- CLUBROOM - EQUESTRIAN
- CLUBROOM - HOCKEY
- SHELTER
- PUBLIC TOILETS
- VIEWS TO HILLS
- FEATURE GATEWAY ENTRY
- SIGNIFICANT VEGETATION



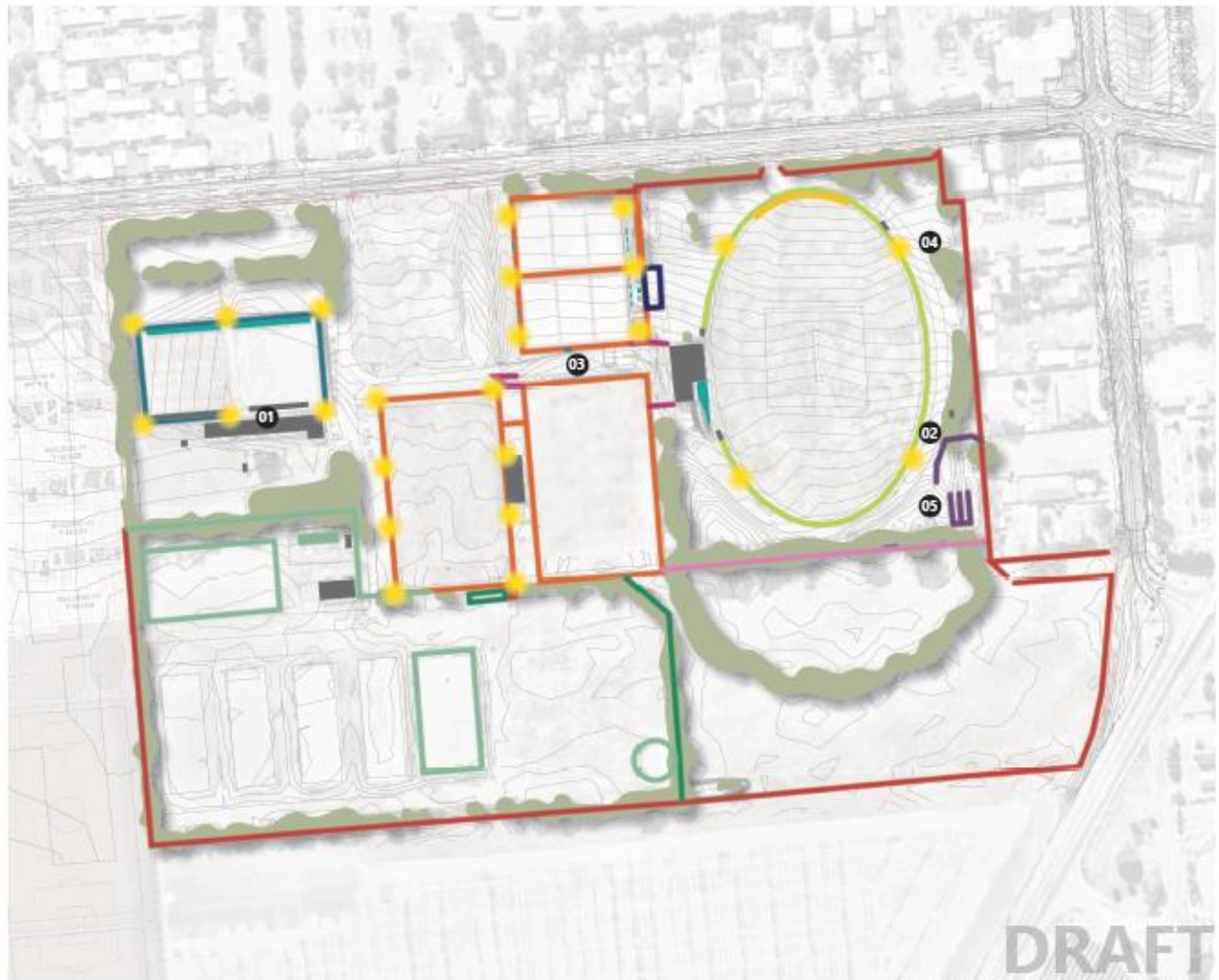


# ALDINGA SPORTS PARK CONCEPT PLAN

## SITE INFRASTRUCTURE

### LEGEND

- SPECTATOR SEATING
- SITE BOUNDARY FENCE
- SPORTS FENCE
- 6M SPORTS FENCE
- POST AND RAIL OVAL BOUNDARY FENCE
- TIMBER POST AND RAIL FENCE
- COLORBOND FENCE
- 1200MM PLAYGROUND FENCE
- SPORTS NETTING
- POST AND RAIL FENCE
- WIRE MESH FENCE
- BUILDING/SHELTER
- LIGHT









**DRAFT**



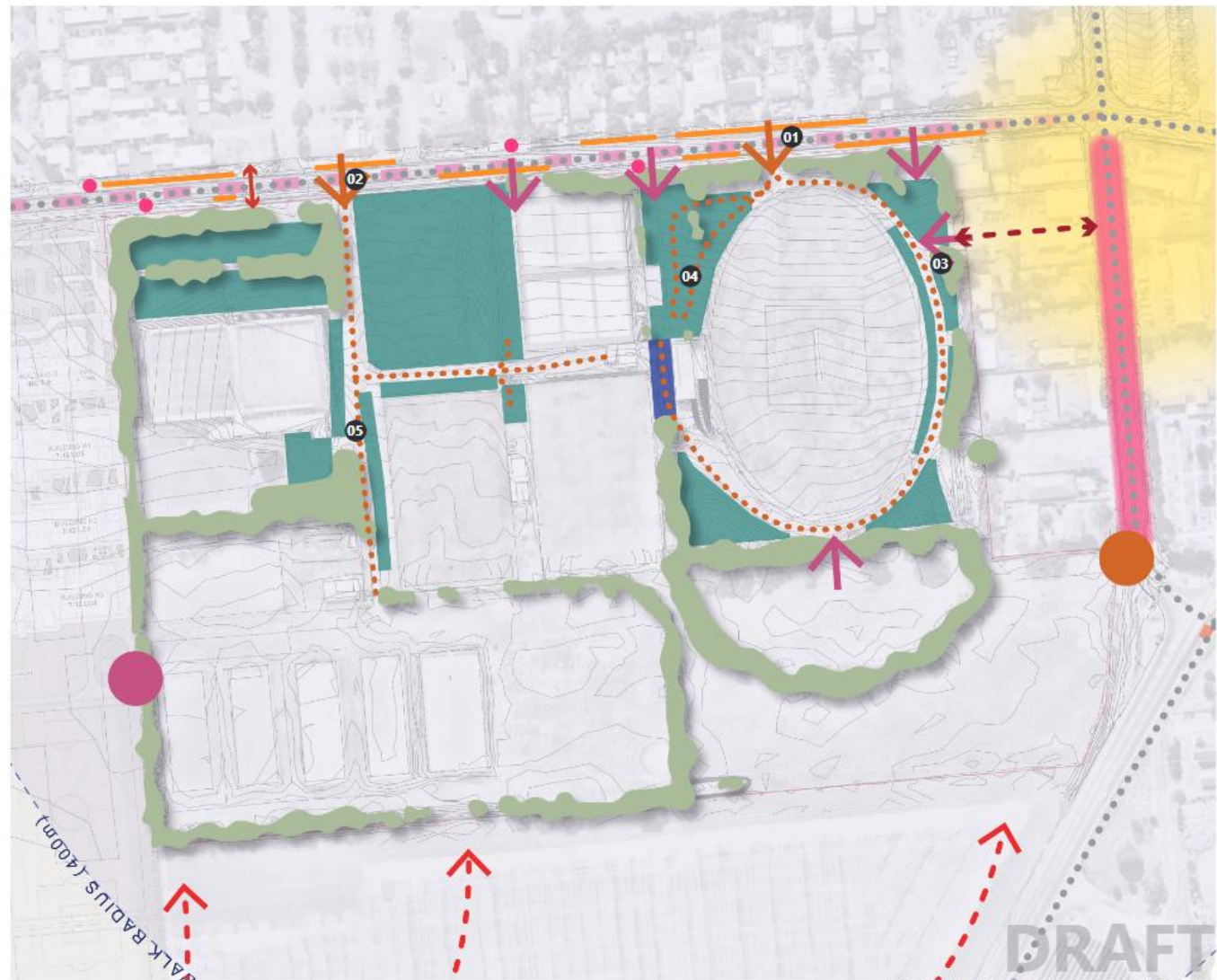
## SITE MOVEMENT

### LEGEND

-  SITE ENTRY POINT - VEHICLE
-  PROPOSED SITE ENTRY POINT - VEHICLE (2013 CONCEPT)
-  SITE ENTRY POINT - PEDESTRIAN/CYCLE
-  PROPOSED SITE ENTRY POINT - PEDESTRIAN/CYCLE
-  SITE VEHICLE MOVEMENT
-  SITE INFORMAL PARKING
-  SITE SERVICES ACCESS
-  STREET CROSSING POINT
-  ONSTREET PARKING
-  BUS STOP
-  MAIN ROAD
-  FUTURE PEDESTRIAN/CYCLE CONNECTION (FRAMEWORK PLAN)
-  CONNECTION TO OLD COACH ROAD
-  TOWN CENTRE
-  ALDINGA MAIN STREET (OLD COACH RD)
-  SHARED USE PATH



0 20 40 60 80 100





# What We've Heard

## Aldinga Soccer Club

- Play in South Australian Amateur Soccer League
- 2 senior males teams/3 junior teams

## Issues

- Need to work around football
- Women's training clashes with women's footy training
- Access to change rooms and canteen
- No facilities for canteen – need to bring eskys, BBQ
- Can't grow without facilities

## Needs

- 2 pitches
- Storage
- Don't want synthetic – more injuries





# What We've Heard

## Aldinga Bay Hockey Club

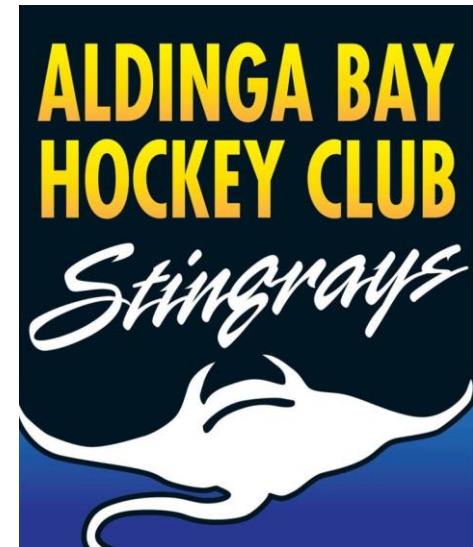
- Plays in South Coast Hockey Association
- 150 junior and senior players

## Issues

- Car parking at capacity with Netball and Hockey
- Dog owners – shared use, safety issues
- No warm-up area if both fields are running
- Lighting has deteriorated

## Needs

- Unisex change rooms required/toilets
- T section club concept or 2 storey clubroom
- Lighting on second field
- Player dug-outs





# What We've Heard



Southern Vales Dressage Club  
Aldinga South Australia

## **Southern Vales Dressage & Aldinga Bay Riding Clubs**

- Equestrian Australia (SA) governing body
- Olympics qualifying equestrian site
- >120 members (however may be double with other riders using the site)

## **Issues**

- Not enough float parking space (state competitions refused)
- Float and truck access
- Security is a concern
- Northern warm up arena too small for show jumping standards

## **Needs**

- Horse wash bay (water currently piped from north-eastern corner of site)
- Existing shed is 6m x 6m (minimum for trailer) but would like more room for storage
- Secure fencing (southern fence concerns)





# What We've Heard

## **Aldinga Football Club**

- Plays in the Southern Football League
- 80 senior players / 280 junior players

## **Issues**

- Corellas
- Soccer using pitch on alternate weekends which is causing overuse
- Symonds Reserve sometimes used – but ground is too hard

## **Needs**

- Storage
- Storage for ride on mower
- Unisex change rooms required





# What We've Heard

## **Aldinga Cricket Club**

- Plays in the Great Southern Cricket Association
- 40 senior players / 25 junior players

## **Issues**

- Training nets – condemned
- All maintenance by Club (as within lease agreement)

## **Needs**

- New training Nets
- Own club rooms space for honour boards





# What We've Heard

## Aldinga Croquet Club

30 senior players



### Issues

- Lack of lights inhibiting membership growth
- Would use the club more if kitchen was available (shared with Bowls)
- Issue with trees along southern edge – sucking water off courts – root damage
- Arsonists/security lights needed

### Needs

- No visibility from club to courts – want indoor/sheltered sitting area
- Desire another court – can't grow club/list 'gala' days (inviting other clubs)



# What We've Heard

## Aldinga Bay Bowling Club

60 senior players/80 Night Owl players

### Issues

- Synthetic - \$\$ not desired
- Limitations of kitchen catering for 120+ people
- Toilets don't comply

### Needs

- Need storage shed on southern side of building
- Extension required
- Lighting to the second green





# What We've Heard

## Aldinga Netball Club

- Plays in the Southern Hills Netball Association
- 58 senior players/100 junior players

## Issues

- Can only use 4 of the 6 courts (major cracks)
- Limitations on what can be sold at canteen
- Remote club room
- No vehicle access to courts
- Council lack of response re maintenance issues
- Feel that they are being moved because it's easy/cheaper.
- Relationship with football strengthening since fire

## Needs

- Shelter required for scorers and timers
- Bigger facility desired – more courts (8-12). Club could then host finals and carnivals





# Discussion





# Program / Consultation

## Next Steps - Program and ongoing consultation

- Equestrian relocation planning
- Soccer pitch and multi-sport building facility designs
- Planning for delivery of 2020/21 projects
- **Ongoing discussions with each club – July/Aug**
- Club engagement meeting - Late August
- Draft concept plan – Aug/Sept
- Community consultation Sept/Oct
- Final concept plan – Late 2020
- Project delivery - 2021