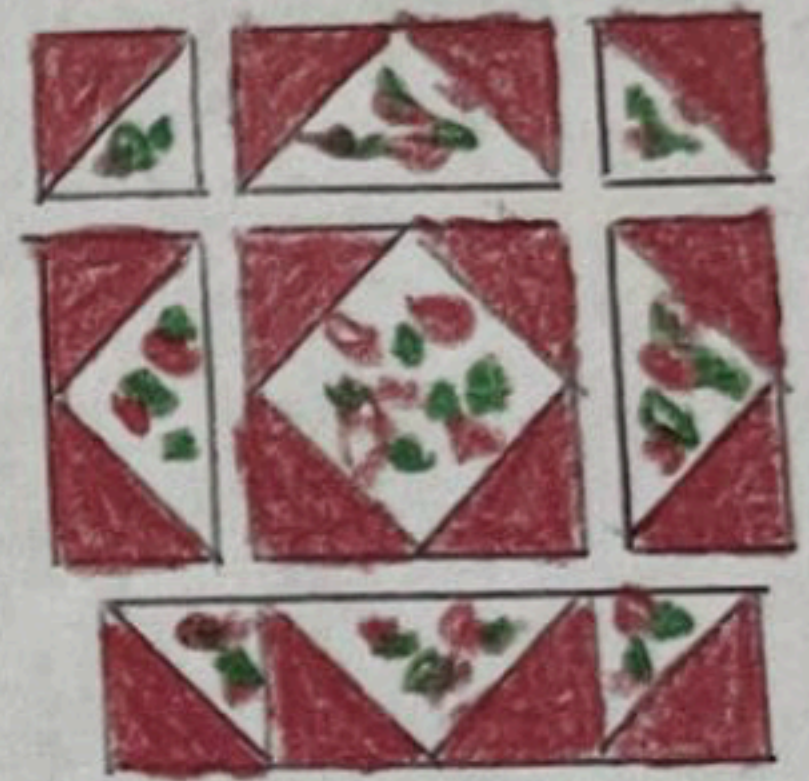
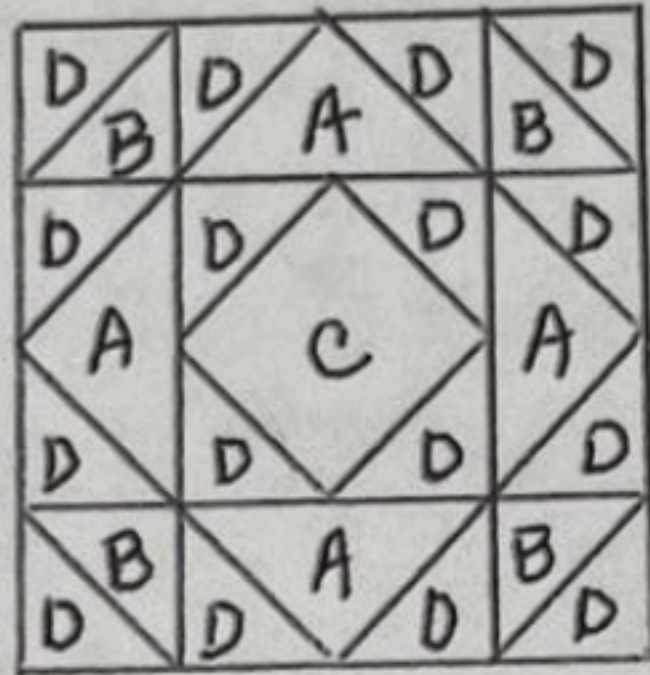
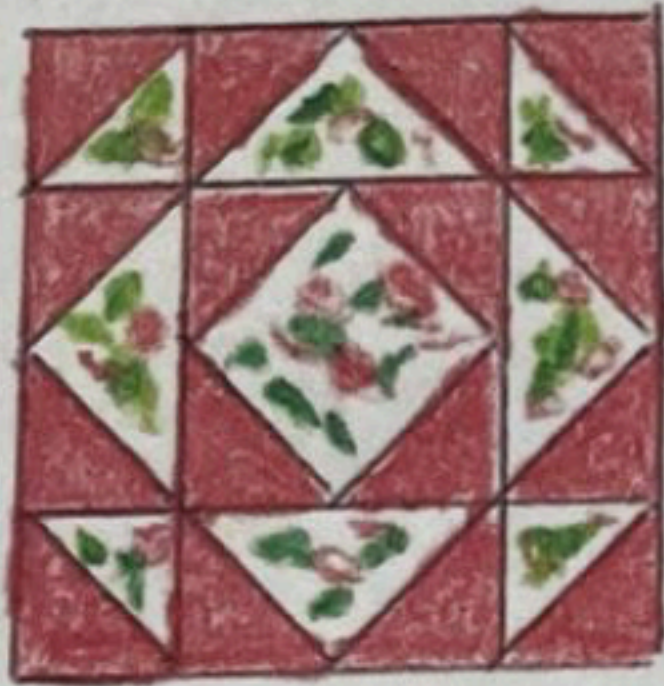


Block of the Month

December 2024

"Connecticut"

Christmas print, Red

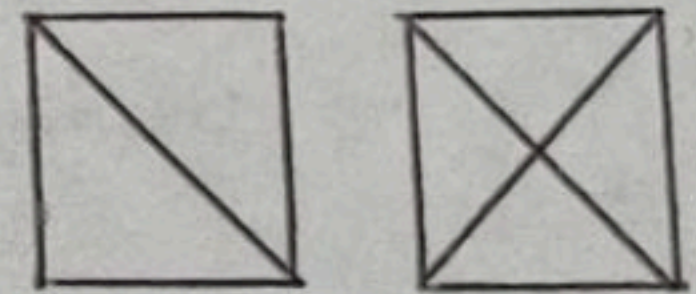


Print: A: cut one  $7 \frac{1}{4}$ ; cut in half diagonally twice

B: cut two  $3 \frac{7}{8}$ ; cut in half diagonally once

C: cut one square  $4 \frac{3}{4}$

Red: D: cut eight squares  $3 \frac{7}{8}$ ; cut in half diagonally



Sew D to B four times

Sew two D's to both sides of A's; Sew four D's to C

Sew the DB sections to the DAD sections twice

Then sew two DAD sections to DDDDC section

Sew rows together as in diagram