



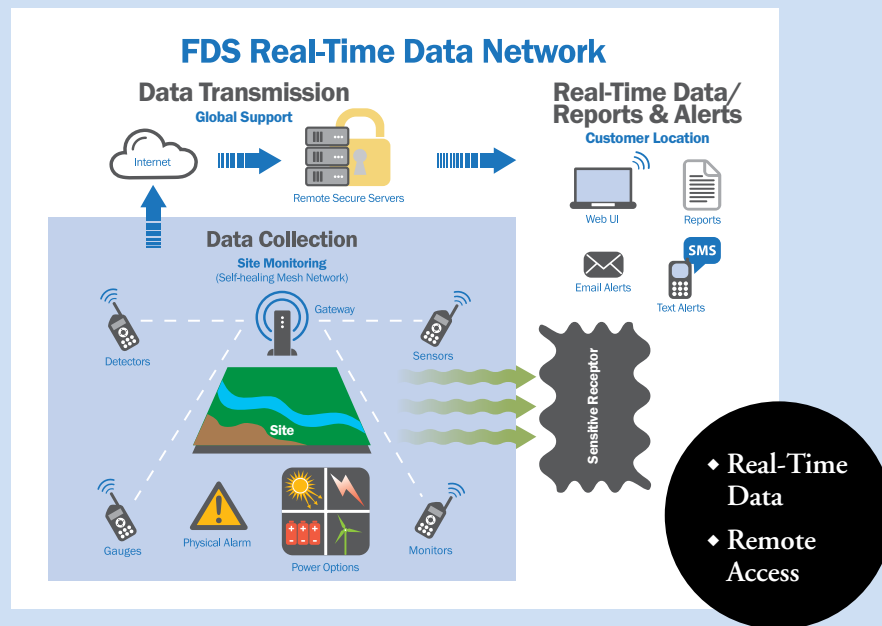
# REAL-TIME DATA SOLUTIONS

Put our expertise and  
ingenuity to work for you.



**Field Data Solutions (FDS)** and **Field Environmental Instruments (FEI)** combine forces to bring the most comprehensive site monitoring solution to the environmental industry.

As an unbeatable team, we have the talent and ingenuity to support your project from planning through execution and reporting.



## FDS Real-Time Data Network

FDS delivers the most comprehensive real-time data network available to the environmental industry:

- ◆ Wireless Connectivity
- ◆ Power Options
- ◆ Instrument Integration
- ◆ Real-Time Data Reports and Alerts

## FEI Built to SPEC

FEI's Special Project Engineers and Consultants (SPEC) team provides:

- ◆ Project Consultation
- ◆ System Engineering
- ◆ Installation
- ◆ Technical Support
- ◆ On-site Training

## Benefits of Real-Time Data Solutions

- ◆ Greatly reduce costs of collecting and securing field data.
- ◆ Capitalize on the latest sensors, instruments and power options.
- ◆ Save time deploying the system and maintaining the equipment
- ◆ with installation assistance, training and 24-hour tech support.
- ◆ Get real-time access to field data and data management tools from anywhere in the world through a project-specific web user interface.
- ◆ Eliminate risk of data loss with secure, remote servers.
- ◆ Learn of any system issues immediately with on-site and remote alerts.
- ◆ Review custom reports rather than wasting time culling through raw data.
- ◆ Continue collecting data and stay on schedule with a self-healing mesh network.

## Project Consultation and System Engineering

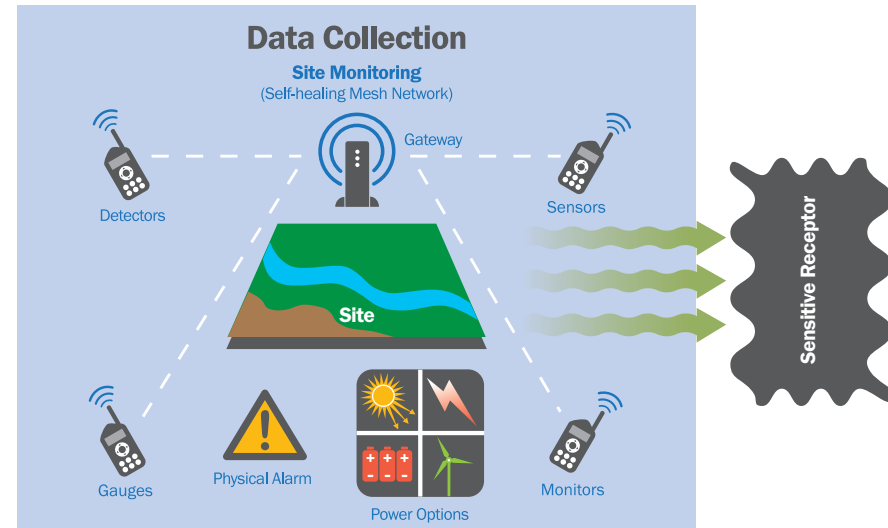
Understanding your project goals and the real-time data you need to support them is the first, and most important, step in providing solutions that will work best for you. The FEI Built to SPEC team recommends the best equipment and instruments from the industry's top manufacturers.

## Wireless Connectivity, Power Options and Instrument Integration

The latest sensors, detectors, gauges and monitors from leading manufacturers are connected to a low-power radio, local mesh network. Just as important as the uninterrupted data collection—the network is flexible and scalable allowing adaptations to your project requirements.

Power options include:

- ◆ Solar
- ◆ Battery
- ◆ Fixed
- ◆ Wind



## Data Transmission



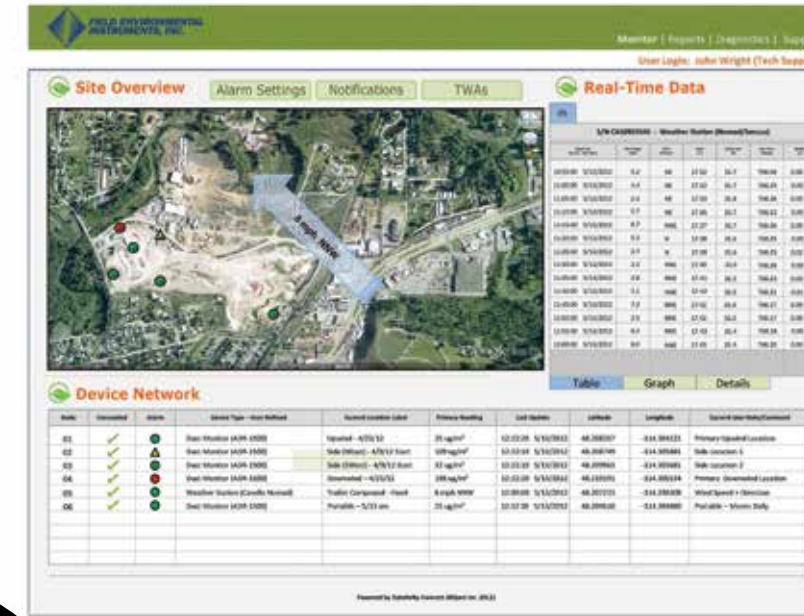
## Real-Time Reports and Alerts

Data management and reporting options deliver the critical information you require—where, when and how you want it. With your secure web user interface, you have access to your real-time data in the format and reports you choose. Web pages are designed exclusively for your project so you are empowered to access real-time data and get the reports you need.

The FDS Real-Time Data Network includes a variety of alert options. Physical alarms notify on-site personnel. Text/SMS and email alerts provide peace of mind to site managers who need to be notified, no matter where they are located.

Visit the website for case studies to learn how the real-time data network can be adapted to a variety of industries for real-time data collection and site monitoring.

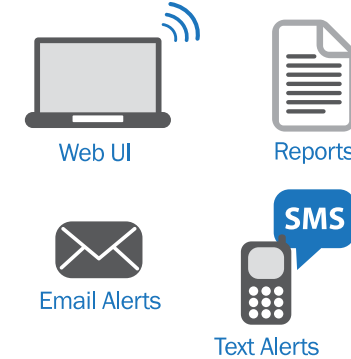
- ◆ Learn of any system issues immediately with on-site and remote alerts.
- ◆ Review project-specific reports rather than wasting time culling through raw data.
- ◆ Get real-time access to data from anywhere in the world through your web user interface.



Sample screenshot of data delivered via web UI in real time.

## Real-Time Data/ Reports & Alerts

Customer Location



## Installation, Technical Support and On-site Training

The technical support provided depends on your internal resources. We have the expertise to assist you in a variety of ways. The FEI Built to SPEC team will provide:

- ◆ 24-hour technical support
- ◆ Equipment training and data management instruction remotely via the Internet, on-site or in the FEI training center
- ◆ Installation and system deployment assistance

The team knows that the level of support you need depends on your staff expertise and resources at any given time. We welcome the opportunity to assist customers.

- ◆ Save time deploying the system and maintaining the equipment with installation assistance, training and 24-hour tech support.






**Use Real-Time Data Solutions for your long-term air, water and soil monitoring projects.**



**Together Field Data Solutions and Field Environmental Instruments Provide Nationwide Support**

**Pittsburgh, PA** *(Corporate Headquarters)*  
800-393-4009 ♦ 412-436-2600

**Atlanta, GA**  
 66-620-6762 ♦ 678-714-0030

**Houston, TX**  
866-323-4006 ♦ 713-799-2010

**Kansas City, KS**  
866-580-5499 ♦ 913-829-3330

**Los Angeles, CA**  
866-278-2382 ♦ 818-576-0050

**Minneapolis/St. Paul, MN**  
866-580-5512 ♦ 952-922-0023

**Philadelphia, PA**  
866-648-8607 ♦ 610-524-5412

**Seattle, WA**  
855-398-5600 ♦ 425-398-5600



[fielddatasolutions.com](http://fielddatasolutions.com)

[fieldenvironmental.com](http://fieldenvironmental.com)