

Coldwell Banker Commercial Bullard
201 Prime Point
Peachtree City, GA 30269
770-632-1774
www.cbcBullard.net



BULLARD

Each Office Is Independently Owned And Operated

FOR LEASE

Class A Professional Building

Headquarters Building - Three Stories, 45,323 sq ft
1000 SKC Drive, Covington, GA 30014

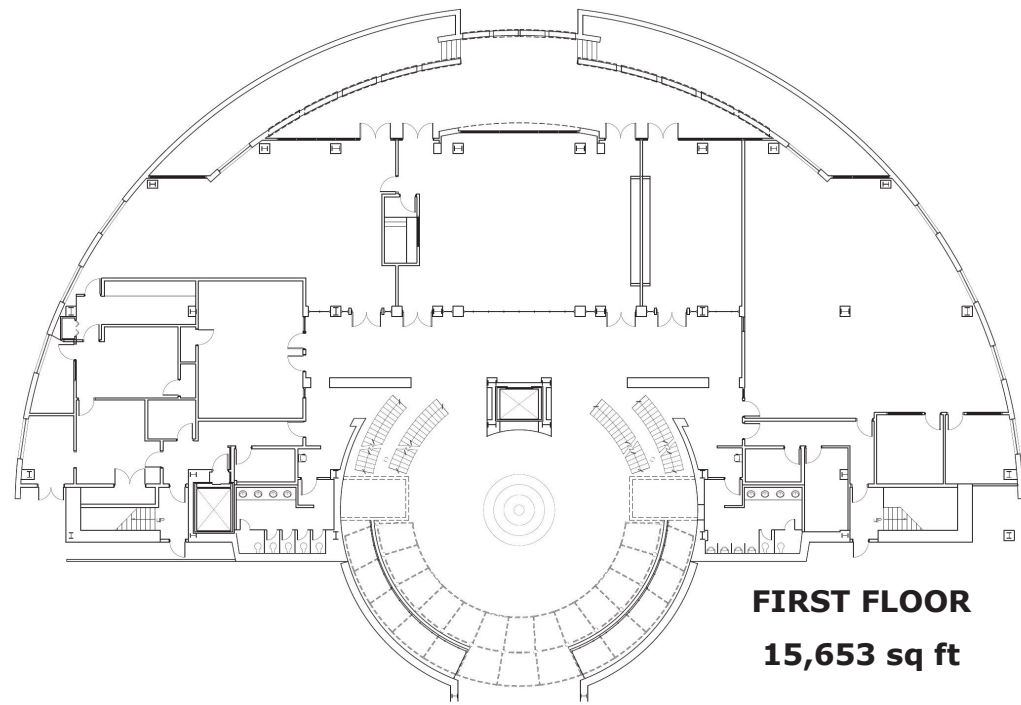


Leasing Information:
Brad Jubin, CCIM, ASC
678-481-5676
Brad@JubinCRE.com

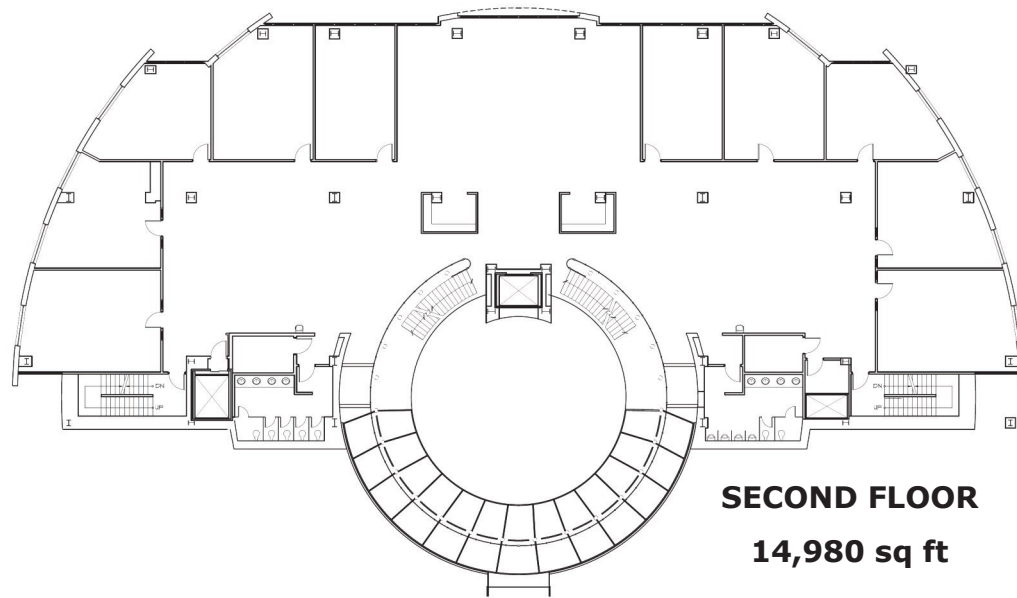


BULLARD

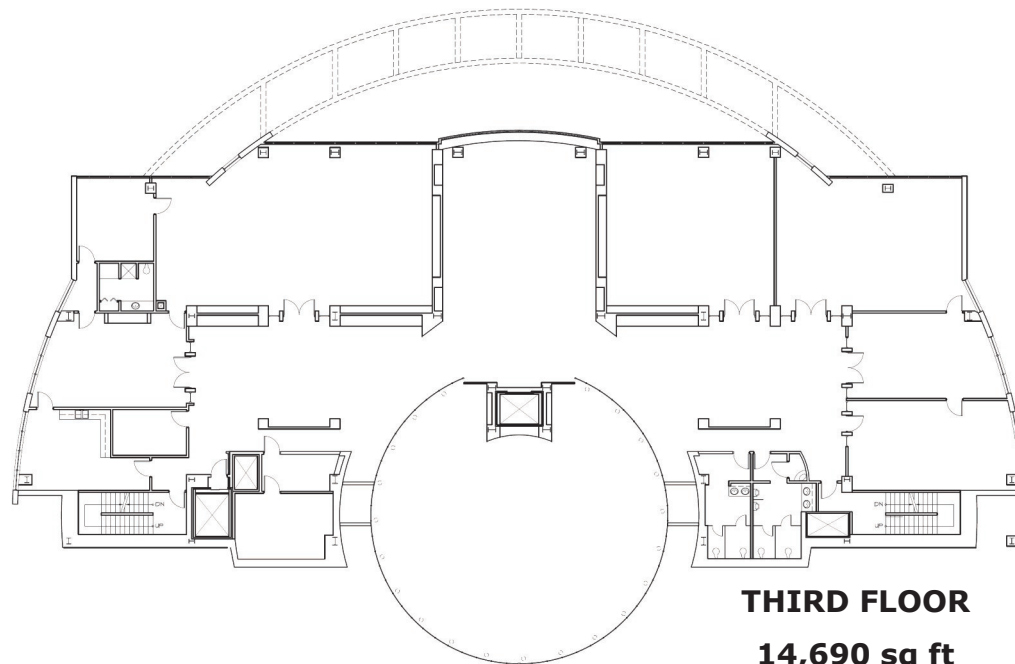
The information presented herein is provided as is, without warranty of any kind. Coldwell Banker Commercial Bullard assumes no liability for errors and omissions.
©2007 Coldwell Banker Real Estate Corporation. All Rights Reserved. The text of this publication, or any part thereof, may not be reproduced or transmitted in any form or by any means, electronic or mechanical, including photocopying, recording, storage in an information retrieval system, or otherwise, without prior permission. Coldwell Banker Commercial® is a registered trademark licensed to Coldwell Banker Real Estate Corporation. An Equal Opportunity Company. Each Office Is Independently Owned And Operated Except Offices Owned.



FIRST FLOOR
15,653 sq ft



SECOND FLOOR
14,980 sq ft



THIRD FLOOR
14,690 sq ft

CLASS A Facility
1000 SKC Drive offers the perfect amenities for a corporate office or headquarters facility. The building is fully finished and ready for occupancy. The three story glass atrium/lobby along with the glass enclosed elevator provides a lasting first impression. The first floor includes a large training facility and ample cafeteria/catering space. The upper floors are a mixture of open space ideal for cubicles and a range of offices from typical private to multi-room executive suites. The location is secure, private and relaxing.

Economic Development Strategy

The Office of Economic Development is responsible for all attraction, retention and workforce development needs for Newton County and its five municipalities. The City of Covington and Newton County are both aggressive and forward thinking governmental agencies known for being business and industrial friendly. Tax abatements, job tax credits and waived permitting fees are routine in return for significant job creation and capital investment.

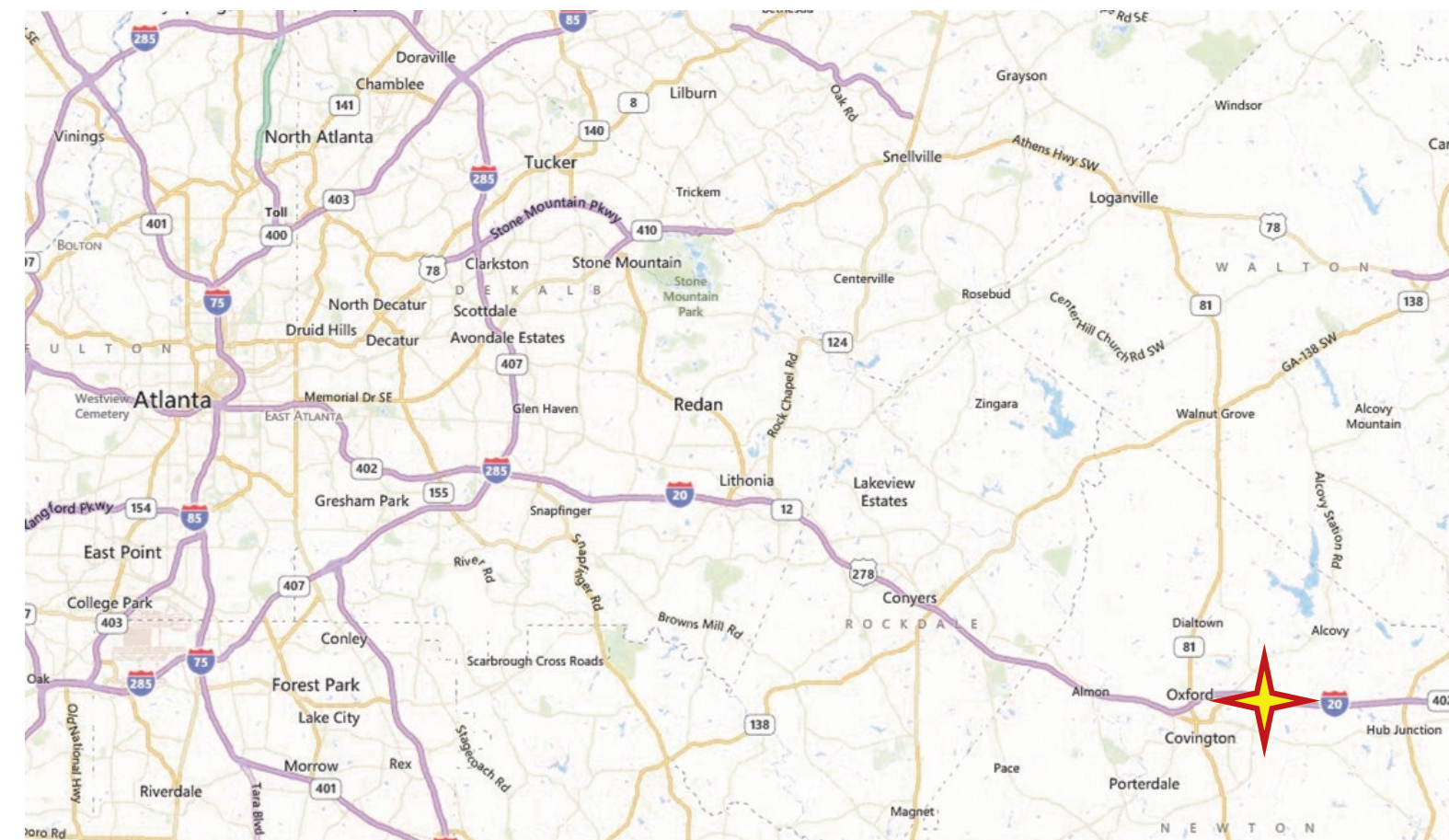
The Office of Economic Development recruits in four targeted sectors:

- Food, Pharmaceutical, and Nutraceuical Processing
- Advanced/Process Manufacturing
- Distribution and Logistics
- Call/Data Centers

Leading Newton County's economic development efforts, and with decades of industry expertise, the economic development team, have developed a formula for success, skillfully serving both existing and new industry. Many companies agree that if it weren't for the professionalism and aid of the economic development team, they might have looked elsewhere for a place to call home. This dynamic, combined with other aspects like low labor costs and cost of living, is what has made Newton County so desirable to numerous large corporations and what continues to attract new industry.

Building Information

Gross Square Feet	45,323
Number of Floors	3
Parking	4/1,000
Elevators (passenger/freight)	2/1



Leasing Information:
Brad Jubin, CCIM, ASC
678-481-5676
Brad@JubinCRE.com



BULLARD