

ECONOVENT® PUR (A,B,C,D)

Instructions for constant speed with wiring diagram

Rotor size 030-250



FläktWoods

Constant Speed - Description, control PUR (A,B,C,D) rotor size 030-250

Drive Equipment for Constant Speed

Heat recovery is regulated by means of two-position motor operation (on/off control).

The electric motor with drive pulley and drive belt are included in the supply.

Rotor size	Electric motor (50/60 Hz)					
	1x(220-240V)		3x400V		3x230V	
030-080	25 W	0,25 A	25 W	0,12 A	25 W	0,26 A
081-150	40 W	0,35 A	40 W	0,16 A	40 W	0,33 A
151-250	105 W	0,72 A	160 W	0,44 A	160 W	0,44 A

Control Example

The performance of the motor alone can be checked by lifting the drive belt off the drive pulley. Always check the direction of rotation.

The rotor shall rotate in such a direction that a point on the rotor surface in the extract air will move towards the purging sector.

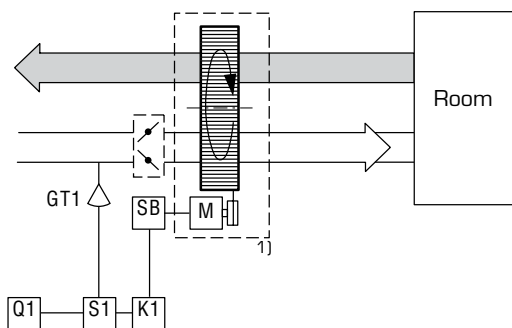


Fig. 1:1 Heat recovery

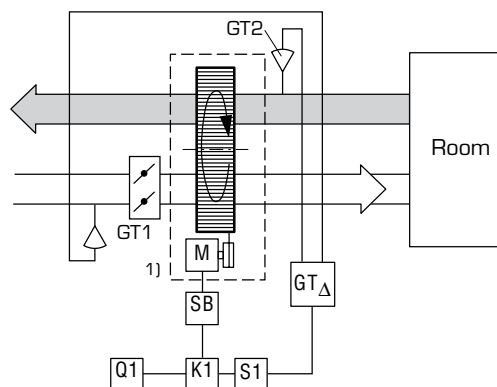


Fig. 1:2 Cooling energy recovery

Designations

- GT1, GT2 = Temperature sensor
- GX1 = Timeswitch
- M = Drive motor
- GT Δ = Differential thermostat
- Q1 = Main switch in the electrical equipment cubicle
- S1 = Control switch
- K1 = Contactor
- SB = Safety isolating switch

1) Supplied with the thermal wheel. All other items shown outside the dotted line are required to be field supplied and wired.

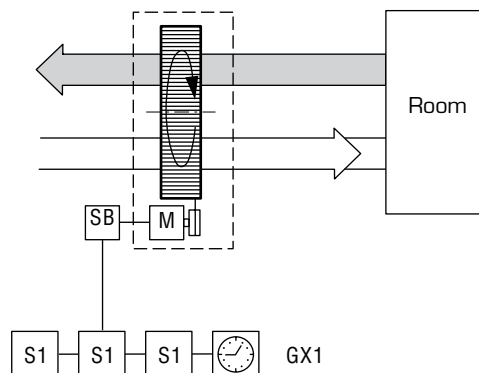


Fig. 1:3 Purging operation

Constant Speed – Wiring diagram PUR (A,B,C,D) rotor size 030-250

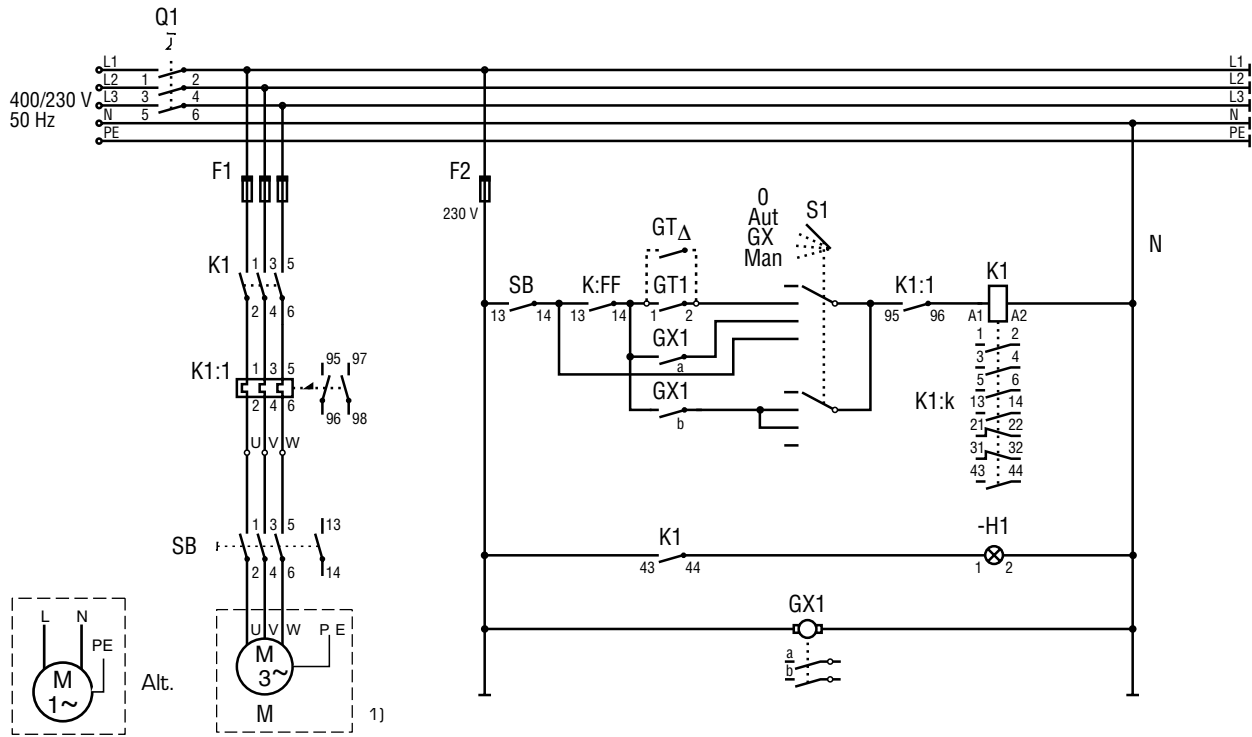


Fig. 2. Basic Wiring Diagram

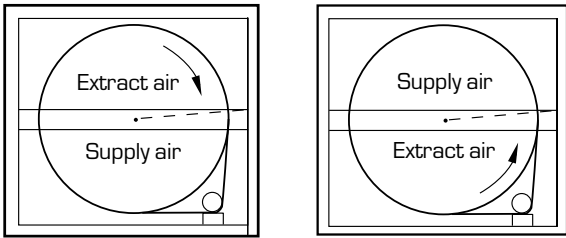
Designations

F1	Fuses	K1	Contactor VX
F2	Control circuit fuse	K1:1	Overcurrent protection
GT1	Thermostat	K1:k	Interlocking contact in K1. Used in systems with rotation monitor
GT Δ	Differential thermostat	M	Motor
GX1	Time switch, a = intermittent operation b = purging operation	Q1	Main switch in the electric equipment cubicle
H1	Signal lamp	S1	Control switch
K:FF	Interlocks e.g. extract air fan	SB	Safety isolating switch

1) Supplied with the thermal wheel. All other items shown outside the dotted line are required to be field supplied and wired.

Constant speed - Electrical connections

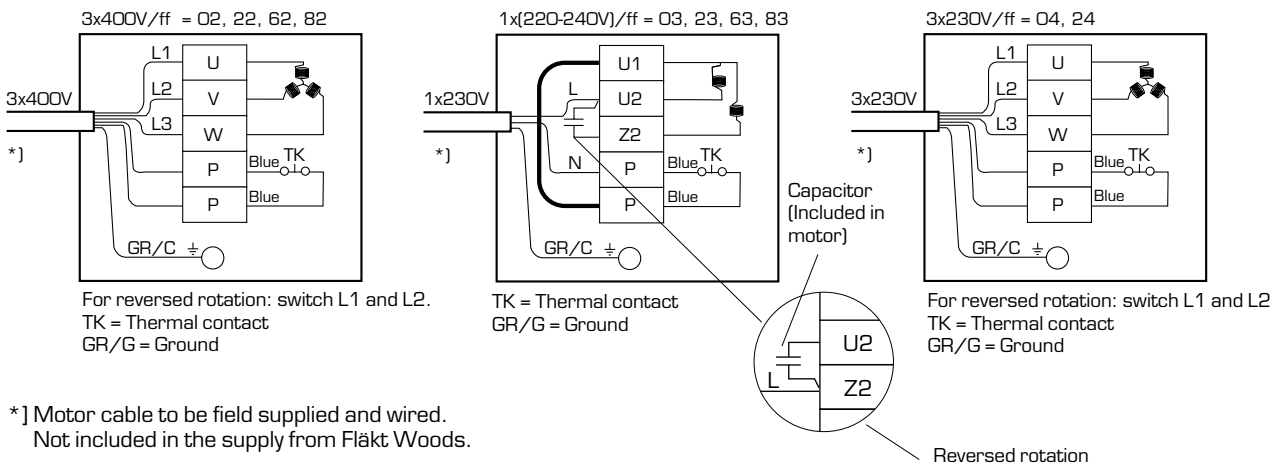
PUR (A,B,C,D) rotor size 030-250



Wire the electrical connections to the appropriate motor terminals.

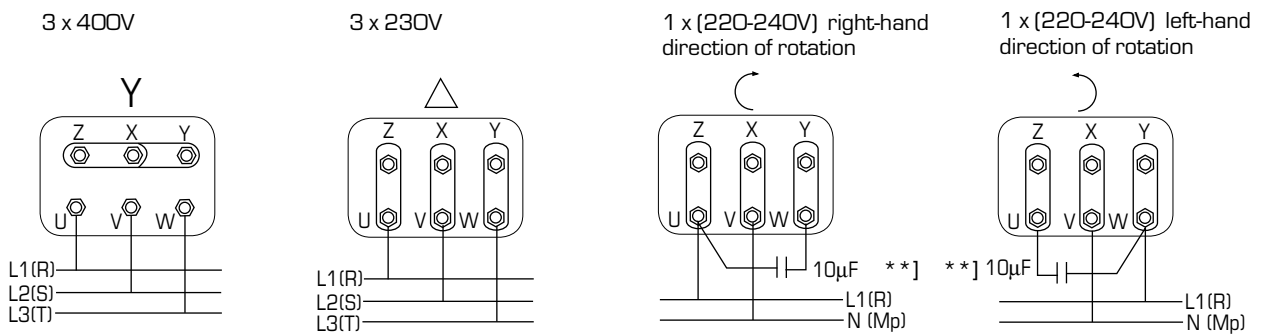
PUR (A,B,C,D) rotor size 030-150 Panasonic

Note! These motors cannot be operated at other voltages other than the ordered voltage, i.e a 240V / 1 phase motor cannot be connected to 400V / 3 phase or visa versa. Each specific voltage requires a different motor type.



PUR (A,B,C,D) rotor size 151-250 Groschopp

The motor can be wired for any of below voltages.



**] Capacitor included in delivery when ff = 03, 23, 63, 83.

We Bring Air to Life

Fläkt Woods is a global leader in air management.
We specialize in the design and manufacture of a wide
range of air climate and air movement solutions.

Our collective experience is unrivalled.

We are constantly aiming to provide systems that
precisely deliver required function and performance as
well as maximum energy efficiency.



Fläkt Woods Group SA

18, avenue Louis Casati, CH-1209 Geneva, Switzerland

Tel. +41 22 309 3800

email info@flaktwoods.com www.flaktwoods.com

See global website for international sales offices www.flaktwoods.com

