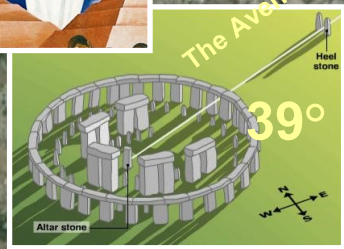
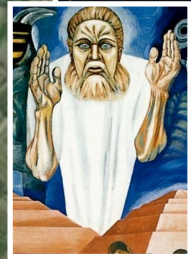


STONEHENGE-TEOTIHUACAN STAR MAP III

This study proposes that the Taurus constellation pattern as depicted over Stonehenge in England is directly associated and mirrored with the similar Taurus constellation layout of Teotihuacan, Mexico. Both motifs have 'The Avenue' that leads to the Pleiades star cluster pattern. In both cases, the Avenues are orientated to the North from the rays of the Sun first brakes forth in every new dawn of a day. In the case of Teotihuacan, The Avenue spans the breath of Orion's belt with the 3 main pyramids corresponding to the size and layout of the pyramids of Giza in Egypt but in reversed order and angle. The Taurus ley-lines of Teotihuacan approximate the topography of the Orion and Taurus constellation of the Cosmos. The Bible has a euphemism that prophecy is related to time and the heavenly bodies, as in 'the Sun, Moon and the Stars'. In the case of the Orion belt association, there is a color attribute that also goes along the respective size and importance of the pyramids. The Pyramid of the Moon is silver, the Pyramid of the Sun is gold and the Temple of Quetzalcoatl is white. It would appear that the designer of the City of the Gods had the same common source of knowledge as those of Stonehenge and Giza, among other prominent places with similar ley-line configurations found also around the planet. What this illustration further purports is the possibility that the Aztec-Mayan Calendar's center face is that of none other than the being whose face is also memorialized on mars, i.e., the Face of Mars.



ORION
PATTERN
TEOTIHUACAN
City of the Gods



$72^\circ - 39^\circ = 33^\circ$ difference

If the 'Face of Mars' or that of Alah-lu is indeed the object of greeting the dawn of the new day's rays of light, it would support the Luciferian 'gospel' that Lucifer is the Light Bearer, the Prometheus that seeks to 'enlighten' Humanity with the forbidden secrets of Heaven.

© Composition & Some Graphics by
LUIS B. VEGA
vegapost@hotmail.com
www.PostScript.org
FOR ILLUSTRATION PURPOSES ONLY

SOME SOURCES
GoogleEarth.com
Stellarium.org
Wikipedia.com



Can it be that the circle of monoliths of Stonehenge are an encrypted depiction of the Face of Mars and of the being, Alah-lu? Is this the so-called 'Pleiadian' Christ that came to 'seed' and eventually return to save Humanity?



Quetzalcoatl = Alah-lu
The 'Shining One'
Son of the Dawn
LUCIFER



Sunrise - Dawn

Scorpio-Sagittarius
Heaven to Earth Meridian

Alnath
The Avenue
MOON - Menkaure
SUN - Khafre
72°
STARS - Cheops
To 'Pleiades' 7 hills

Taurus Pattern

'THE AVENUE'

Sunrise - Dawn

The Light Bearer

Aztec Cosmic calendar
12ft = (12 x 12) = 144 inches diameter

Headdress - 'Helmet'



Face of Mars

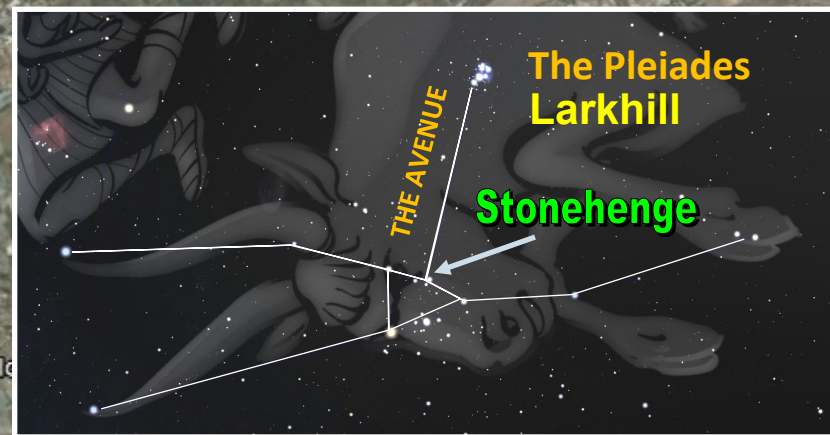


'THE PLEIADES'

'The Avenue'

Same angle as Stonehenge

Temple of Moon
TEOTIHUACAN



The Pleiades
Larkhill

Stonehenge

Google earth

Imagery Date: 2/2/2016 19°41'52.60" N 98°50'39.06" W elev 7593 ft eye alt 12.76 mi

Tour Guide