

# The Grapevine

The newsletter for Planter's Row  
*Spring 2015*

## President's Letter: Simon Kaye

Dear Neighbors,

First of all, I would like to thank everyone that was in attendance at the annual meeting. The current board members were re-elected, and we look forward to serving Planter's Row for another year. 2014 proved to be a great year for the neighborhood, and we expect 2015 to be even better. As you know from the recent mailings we have a few major projects planned this year along with a few smaller ones as well. There will inevitably be a bit of disruption to the pool area, once construction of the clubhouse begins, but we hope to keep that to a minimum. Please bear in mind that the small amount of inconvenience now will be rewarded once the clubhouse is operational.

Landscaping projects are already underway, new speakers are ready to be installed in the pool area and we are getting ready for an extended pool and social season.

This year I have published a President's Report, which includes a recap of 2014 and a preview of the things to come in 2015. You can find this document on the Planter's Row website [www.planterrow.net](http://www.planterrow.net) under forms - annual meeting presentations, or you may send me an email at [president@planterrow.net](mailto:president@planterrow.net), and I will send you a copy.

The annual dues were due for payment at the end of February, so if you have not paid already you are overdue. Please remember that liens will be issued for unpaid assessments on May 15th and access cards (or fobs) for the facilities will be suspended for anyone with a balance on their account. If your access to the facilities is suspended, it will take up to one week to have it enabled and you will not be granted access to the facilities until the card is re-activated. The management company handle the access cards and they only activate cards once a week (Thursday). So if you have not already paid, please do not leave it until the last minute.

In the pages that follow there will be reports from the Planter's Row committees and other relevant neighborhood information. And finally, please remember if you have any questions or concerns about any aspect of Planter's Row, or you wish to join our great group of volunteers, please contact me directly.

### TABLE OF CONTENTS

President's Letter	1
Community Day	2
Yard of the Month	2
Friendly Reminders	2
Welcome Wagon	2
Bylaw Committee	2
Facilities Report	2
Landscaping Report	2
Enforcement Issues	2
Pool Rules 2015	3
Pool Opening Hours	3
Social Calendar 2015	4
PR HOA 2015/2016	4

Simon Kaye  
President PR HOA Board



For instant access to the latest community information, join our neighborhood FB page.  
<https://www.facebook.com/groups/PRsocial/>

### **COMMUNITY DAY:**

*Neighborhood Community Day is Saturday, May 16th*

*Yard Sale: 8:00am-Noon*

*Mailbox Numbers: 2-4pm  
(Located at the pool house)*

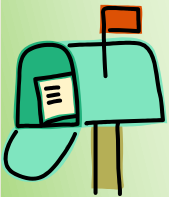
*Ice Cream Social @ pool 4pm  
(while the ice cream lasts)*

### **YARD OF THE MONTH:**

*Yard of the month starts again in May and runs through September. \$25 gift card for each monthly winner and the prestige of the Yard of the Month sign.*

### **FRIENDLY REMINDERS:**

*Please store your trash and recycling bins in an area that is not visible from the street or from a neighboring property.*



*Need your mailbox repaired? Contact:  
Gary Englund,  
110 Sea Oats Inlet,  
Tel: 498-8487*

*Email: [gme51358@gmail.com](mailto:gme51358@gmail.com)*

### **WELCOME WAGON:**

*If you can donate items such as baked goods, house plants, boxed teas, kitchen items, for the welcome baskets, or know of a neighbor's life changing event (birth, marriage etc.), please contact Sandy at:  
[welcome@plantersrow.net](mailto:welcome@plantersrow.net)*

## **Volunteers Needed**

*Please email:  
[social@plantersrow.net](mailto:social@plantersrow.net)*

### **BYLAW COMMITTEE:**

Many of you may not know this, but 2015 is a special year for Planter's Row. It's our Association's 21<sup>st</sup> anniversary, which means there is now a reduction in the number of homeowners required to amend the covenants (CCRs). We now require only 65% of the homeowners in good standing to agree to change them. Updating the CCRs has always been a goal of this Board, and we are looking for some volunteers that would like to help. This will be a monumental task, but it is achievable. If this is something that you would like to volunteer for, please email [president@plantersrow.net](mailto:president@plantersrow.net)

### **FACILITIES REPORT:**

We will see an extended pool season and extended morning hours on Saturday and Sunday mornings. We will start the development of the Soccer Field, which will see a soccer pitch with goal posts and a barrier net installed. We will start the renovations on the pool bathrooms very soon, and the clubhouse constructions will begin.

### **LANDSCAPING REPORT:**

As Summer is quickly approaching, the neighborhood landscaping company has been very busy. Over the past few weeks they have accomplished the following:

- Mulch has been put out in the amenities area and at all of the entrances to the neighborhood.
- Hydro-seeding was done along both sides of Ashmore Bridge Road. This should allow grass to grow in the bare areas.
- The crepe myrtles around the pool have been pruned. They will grow back, but much of the pool deck will not provide as much shade as in the past. Please take this into account. Umbrellas will provide shade at the tables, but you may want to bring sunscreen.
- A French Drain will be installed above the pool side of the tunnel and covered with river rock.
- The Leyland Cypress trees at the lower monument have been pruned to prevent damage to the monument.

### **ENFORCEMENT ISSUES:**

Remember as we enter the warmer months, the covenants require homes and yards in Planter's Row to be maintained to a satisfactory level. This includes taking care of things like mailboxes, flower beds, vinyl siding etc. One of the biggest problems we are still facing is homeowners that are parking on the grass. Be warned if you continue to park on the grass, you will be fined. The neighborhood has a professional power washer that is available for rental. The fee is \$50 for a two day period. If you would like to rent it, please download and complete the form from the neighborhood website [www.plantersrow.net](http://www.plantersrow.net) or contact Brian Johnson, [facilities@plantersrow.net](mailto:facilities@plantersrow.net)

## **2015 POOL RULES:**

Due to current FHA regulations we have had to make some changes to the pool rules and pool party/pavilion rentals.. Effective immediately there will now be a \$10 charge for any pool party/pavilion rentals. Full details are on the reservation form.

### **SAFETY / HEALTH REGULATIONS:**

*These regulations are mandated by DHEC for the entire state of South Carolina.*

*Violations of these regulations can cause pool closure and/or fines as dictated by DHEC*

- No solo swimming and no diving.
- No running, pushing, boisterous or rough play in the pool, pool deck or cabana area.
- No person under the influence of drugs or alcohol should use the pool.
- No spitting or blowing nose in the pool.
- Persons with diarrheal illness or nausea should not enter the pool.
- Persons with skin, eye, ear, respiratory infections or communicable diseases should not enter the pool.
- Persons with open lesions or wounds should not enter the pool.
- No animals or pets allowed in the pool or pool area (except service animals).
- No glass or dangerous objects shall be brought into the pool, pool deck or cabana area.
- No children should be in the pool without supervision.
- You should take a shower before entering the pool.

*In addition to the above DHEC mandated regulations, Planter's Row has added these additional health and safety regulations.*

- No Smoking in pool, pool deck or cabana area. (A designated smoking area has been established outside the pool area near the bike rack).
- No riding skateboards, bikes or scooters in the cabana or on the pool deck.
- Alcoholic beverages should be out of public view concealed by a koozie (no glass containers allowed).
- No profanity in the pool or cabana area.
- Anyone entering the pool must have proper and acceptable swimwear. (Please remember we are a family friendly facility and we ask that you dress accordingly)
- Public displays of affection are not welcome in our family friendly facility.
- During electrical storms, the pool must be evacuated as directed by the lifeguard staff.
- No person is allowed in the pool during the mandatory 10 minute "lap swim" at 50 minutes past the hour unless they are swimming laps.
- For safety reasons, no person under the age of 14 should be left unsupervised in the pool or pool area.

## **2015 POOL OPENING HOURS**

<b>Opening Weekend:</b>	<b>Saturday, May 16</b>	<b>10am - 9pm</b>	<b>Sunday, May 17</b>	<b>12pm - 9pm</b>
Pool Closed:	Monday, May 18	thru	Friday, May 22	
<b>Memorial Day Weekend:</b>	<b>Saturday, May 23</b>	<b>10am - 9pm</b>	<b>Sunday, May 24</b>	<b>12pm - 9pm</b>
<b>(Lifeguards)</b>	<b>Monday, May 25</b>	<b>10am - 9pm</b>		
No Lifeguards:	Tuesday, May 26	thru	Friday, May 29	12pm - 9pm
<b>Full Pool Season:</b>	<b>Saturday, May 30 until Sunday, Aug 23</b>			
<b>(Lifeguards)</b>	<b>Monday - Saturdays</b>	<b>10am - 9pm</b>	<b>Sundays</b>	<b>12pm - 9pm</b>
<b>End of Season:</b>	<b>Monday, Aug 24 until Friday Sept 18</b>			
No Lifeguards (m-f)	Mondays	thru	Fridays	10am-8pm*
Lifeguards (sat/sun)	Saturdays	10am - 9pm	Sundays	12pm - 9pm
<b>Closing Weekend:</b>	<b>Saturday, Sept 19</b>	<b>10am - 9pm</b>	<b>Sunday, Sept 20</b>	<b>12pm - 9pm</b>
Morning Lap Swim:	Saturdays	9am - 10am	Sundays	11am-12pm

\* Lifeguards Monday, Sep 7 (Labor Day weekend).

# **Social Calendar 2015**

(Main Neighborhood Events (Saturdays))



**Ice Cream Social**

**Saturday, May 16th 4pm**

Join us for the pool opening  
at the Ice Cream Social.

DATE	EVENT	Time
May 16th	Pool Opening - Ice Cream Social	4pm
July 4th	Independence Day Celebration	11am-2pm
Aug 15th	Summer "Back to School" Bash	6pm-9pm
Sep 19th	Pool Closing - Ice Cream Social	4pm
Oct 24th	Fall Festival	4pm-6pm

## **Social Season**

*Due to the impending construction of the clubhouse and renovations of the bathrooms, there will be a slightly reduced event calendar for the summer. Full details of the planned events will be sent out in a social flyer in a few weeks (details will be posted on the Facebook page and*

## **Planter's Row Homeowners Association 2015/2016**

Neighborhood Website: [www.plantersrow.net](http://www.plantersrow.net)

Facebook: <https://www.facebook.com/groups/PRsocial/> (check us out!!)

<u>Board Member</u>	<u>Address</u>	<u>Email</u>	<u>Responsibility</u>
Simon Kaye	104 Sea Oats Inlet	president@plantersrow.net	President
Brian Johnson	109 Sea Oats Inlet	vicepresident@plantersrow.net	Vice President
Kevin Bragman	306 Fieldgate Court	treasurer@plantersrow.net	Treasurer
Carol Broadus	221 Marsh Creek Drive	member1@plantersrow.net	Member at Large
Deana Verdin	5 Trailstream Drive	member2@plantersrow.net	Member at Large
<u>Non-Board Member</u>	<u>Address</u>	<u>Email</u>	<u>Responsibility</u>
Michele Robertson	6 Trailstream Drive	secretary@plantersrow.net	Secretary

<u>Committee</u>	<u>Email</u>	<u>Contact</u>
Architectural (ACC)	acc@plantersrow.net	Carol Broadus
Bylaws	president@plantersrow.net	Simon Kaye
Communication		
Website	webmaster@plantersrow.net	
Newsletter	newsletter@plantersrow.net	Simon Kaye
Community Liaison	liaison@plantersrow.net	Michele Robertson
Landscaping	landscaping@plantersrow.net	Brian Johnson
Neighborhood Watch	nwc@plantersrow.net	Ed Zahler
Recreation / Facilities	facilities@plantersrow.net	Brian Johnson
Social	social@plantersrow.net	Deana Verdin
Welcome Wagon	welcome@plantersrow.net	Sandy West

### **Property Management Company:**

*HOA Community Management,  
400 Regent Park Ct, Suite 100  
Greenville, SC 29607.*

*Contact: Jennifer Frodl*

*Tel: 864-277-4507 x 4*

*Fax: 864-277-3308*