

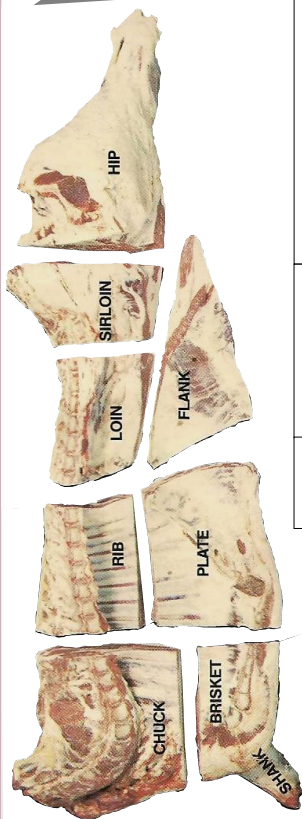
RED DEER LAKE MEAT PROCESSING LTD.

Located a short, pleasant drive south of Calgary, west of Spruce Meadows

Serving Southern Alberta since 1974

Specializing in Custom Slaughter and locally produced Beef, Lamb, & Pork

Featuring Local Alberta Beef & Lamb



WHOLE SIDE OF BEEF
 Cut From 100% Genuine Local Alberta Dry aged Beef.
 1 Hind & 1 Front (Avg. 250-300 lbs.)
 Cut, Wrapped, Frozen & Boxed **\$4.39/lb.;** Uncut **\$3.79/lb**

SPLIT SIDE OF BEEF –(Half Hind and Half Front)
 (Approx. Weight before cutting- 150 lbs.)
 Cut, Wrapped, Frozen & Boxed **\$4.49/lb**

FRONT OF BEEF
 Rib, Chuck, & Brisket
 (Avg. 130-160 lbs.)
 Cut, Wrapped, Frozen & Boxed **\$4.09/lb.** Uncut **\$3.69/lb**

HIND OF BEEF
 Hip, Long Loin, & Flank
 (Avg. 110-140 lbs.)
 Cut, Wrapped, Frozen & Boxed **\$4.59/lb.** Uncut **\$3.99/lb**

Price is based on weight before cutting. Price includes cutting, Brown paper freezer wrapping, boxing, and freezing. Custom Beef slaughter also available. Call for current rates & slaughter booking. Custom Beef Slaughter is \$130.00 head; cut & wrap cost: 0.79/lb.

UNCUT BEEF PRIMALS

BEEF HIP–Bone in Whole **\$4.79/lb.**

Top(Inside) Round –Whole Bnls **\$7.99/lb.**

Bottom(Outside) Round –Whole Bnls **\$7.49/lb.**

Sirloin Tip –Whole Bnls **\$7.99/lb.**

Whole Blade (chuck)–Bone in uncut **\$5.99/lb.**

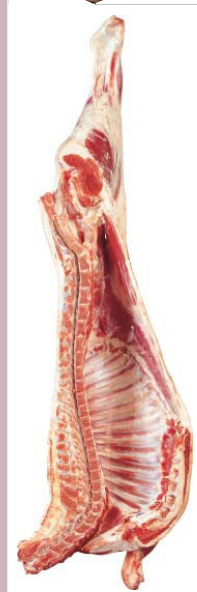
Cross Rib–Bone In Whole uncut **\$5.99/lb.**

Brisket Plate–Bone In Whole uncut **\$3.99/lb.**

Top Sirloin Butt –Bnls Whole Uncut **\$9.99/lb.**

Strip Loin –Bnls Whole Uncut **\$15.49/lb.**

See reverse side for more retail prices



Alberta Lamb

ALBERTA LAMB *Subject to availability
 Average Carcass Weight : 45-70 lbs;
 Cut, Wrapped, Frozen & Boxed
Carcass–\$9.99/lb. **Side** **\$10.49/lb.**

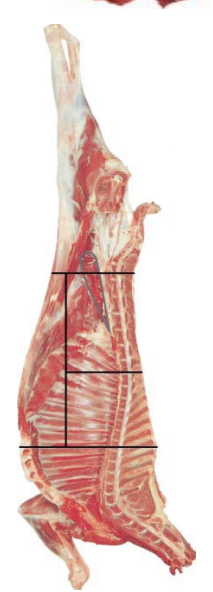
CARCASS OF LAMB
Uncut; Market Weight (45-70 lbs)
\$9.49/lb. *Subject to availability

***LAMB CUTS** *Subject to availability
 Whole Leg Bone In–\$14.49/lb. Side Ribs–\$9.99/lb.
 Loin Chops–\$28.50/lb. Whole Rack–\$25.50/lb.
 Whole Shoulder Roast–Bone In–\$14.49/lb.
 Shoulder Chops–\$14.99/lb Whole Shank–\$9.99/lb.
 Boneless Stew–\$15.99/lb Ground Lamb–\$12.99/lb.

***CARCASS OF GOAT**
 Average Weight : 25-40 lbs;
Cut, Wrapped, Frozen & Boxed
\$12.99/lb. *Subject to availability

***SIDE OF GOAT**
 Avg. Weight : 13-20 lbs.
Cut, Wrapped, Frozen & Boxed
\$13.49/lb. *Subject to availability

***CARCASS OF LAMB**
Uncut; Head On Spring Lamb;
Under 44 lbs
\$14.50/lb. *Subject to availability



Alberta Goat



Main Plant Address
 90093 226 Ave West
 Foothills, AB. T1S 2Z2

Ph.-403-256-4925
 Fax: 403-256-8882
 Email: info@rdlmeats.ab.ca
 Website www.rdlmeats.ab.ca



*Please Call 403-256-4925 to place an order.
 *Prices in effect until: **Aug 31/ 2021**
 Prices are subject to change. Please Call to verify.
 All our Products are from Guaranteed Natural Local
 Alberta Government Inspected Livestock