

# POWERS' PICKS \$15

Volume 7 Issue 9

September 12-16, 2019

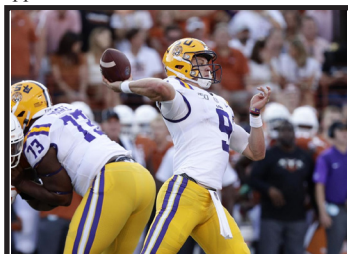
© 2019 BP Sports, LLC

**NFL Best Bets Go 3-0 in Week 1, Now 61% All-Time!!!**  
**Week 3 CFB Best Bets Pg 3, Week 2 NFL Best Bets Pg 7**

## Week 2 News and Notes!

For those of you that are new, in this section we'll recap what happened last week specifically, the misleading finals, the key injuries, the bad beats and the line moves. We'll include most of these recaps here, therefore you don't have to waste time reading about them in my game-by-game write-ups for the upcoming week. Without further adieu, here's a run down of what happened last week in the world of CFB.

	<b>Week 2 Trends</b>
Straight Up	67-7
ATS	36-35-3
	<b>Home-Away</b>
Straight Up	58-16
ATS	35-36-3
	<b>Totals (O/U)</b>
Over-Under	38-36



LSU QB Joe Burrow was 31 of 39 for 471 yards and 4 TD's in No. 6 LSU's 45-38 win at No. 9 Texas. Burrow has seen his Heisman odds go from 200/1 all the way down to 5/1 after just two games this season.

### Largest Favorites to Cover:

Oklahoma (-46.5) vs South Dakota, 70-14  
 Oklahoma St (-41.5) vs McNeese St, 56-14  
 South Carolina (-36) vs Charleston So, 72-10  
 Indiana (-35.5) vs Eastern Illinois, 52-0  
 Wisconsin (-35) vs Central Michigan, 61-0

### Biggest Money line Upsets:

California +450 won 20-19 at Washington (+13.5)  
 Western Kentucky +260 won 20-14 at FIU (+8)  
 San Diego St +260 won 23-14 at UCLA (+7.5)  
 Coastal Carolina +240 won 12-7 at Kansas (+7)  
 North Carolina +180 won 28-25, vs Miami, FL (+5)

### ATS Notables

LSU QB Joe Burrow has went from 200/1 to 5/1 in the Heisman futures betting market after just two games!

Alabama was a 55.5-point favorite vs New Mexico St last week. It was the largest spread involving two FBS teams since 2013. The Crimson Tide would not cover as in typical Nick Saban fashion, he took his foot off the gas pedal in the 4Q and Alabama scored ZERO points in that final stanza. Alabama fell to just 5-14 ATS laying 40 or more since 2008 and as you can see by the chart below, it's by far Nick Saban's worst role as a head coach.

### Nick Saban (Since 2008, 2nd Season at Alabama)

Spread	SU	Margin	ATS	%	Margin
Dog	4-1	+14.2	4-1	80%	+19.6
0-9.5	25-11	+6.5	17-19	47%	+0.1
10-19.5	42-3	+18.7	27-18	60%	+4.7
20-29.5	34-0	+32.2	24-8-2	75%	+7.2
30-39.5	17-0	+36.2	8-9	47%	+0.7
40-plus	19-0	+41.8	5-14	26%	-5.9
<b>Overall</b>	<b>141-15</b>	<b>+23.4</b>	<b>85-69-2</b>	<b>55%</b>	<b>+2.9</b>

2nd-year Power 5 head coaches continue to struggle as Tennessee's Jeremy Pruitt, Florida St's Willie Taggart, Nebraska's Scott Frost, UCLA's Chip Kelly and Arkansas' Chad Morris are a combined 0-10 ATS so far this season failing to cover by a combined 157.5 points! (-15.7 ppg!)

## Misleading Finals

Charlotte lost 56-41 to Appalachian St but the 49ers had 24-16 first down and 533-458 yard edges. However, Charlotte was -2 in TO's. Appalachian St also got a blocked punt return TD and then got a 45-yard outside kick return TD with 3:10 left.

Texas St had 27-16 first down and 444-293 yard edges but were -2 in TO's in their 23-14 loss vs Wyoming. Texas St led 14-10 at halftime, but a 72-yard interception return TD mid-way through the 3Q was the play of the game. The Bobcats also missed 2 FG's and ended the game on the Wyoming 6-yard line.

Buffalo had 22-14 first down and 429-357 yard edges including 184-78 on the ground but somehow lost 45-13 at Penn St. The Bulls led 10-7 at halftime and the only time Penn St was covering the spread happened after a 56-yard TD pass with 3:03 left. A 36-yard interception return TD to start off the 3Q woke up a very sleepy "Happy Valley".

Grambling actually had 32-20 first down and 455-390 yard edges including 216-170 on the ground but lost 20-14 at Louisiana Tech. Grambling was stopped on downs at the Louisiana Tech 5-yard line on their opening drive, missed a field goal and also fumbled at the LT 8-yard line and were stopped on downs at the LT 9-yard line in the second half.

## Bad Beats

Overtime in college football is not your friend if you bet the UNDER. In the **BYU/Tennessee** game, the total was 52. The two teams had combined for just 29 points until Tennessee allowed a 64-yard pass with 6 seconds left that set up a game-tying field goal that would force OT. The teams would combine for 23 points in the two overtimes with the final BYU TD putting the game OVER.

Similarly, the total in the **Nebraska/Colorado** game was 64. Heading into the 4Q, the score was just Nebraska 17-7 and UNDER bettors seemed safe. However, Colorado and Nebraska combined for 38 points in the final stanza and Colorado's FG in OT would put the game OVER by a single point.

## Major Injuries

Central Michigan QB Quinten Dormady (knee) is ? vs Akron.  
 FIU QB James Morgan (ankle) is ? vs New Hampshire.  
 Georgia Southern QB Shai Werts (shoulder) is ? vs Minnesota.  
 Illinois RB Reggie Corbin (hip) is ? vs Eastern Michigan.  
 Kentucky QB Terry Wilson (knee) is out for the season. Former Troy QB Sawyer Smith has been named the starter vs Florida.  
 Mississippi St QB Tommy Stevens (shoulder) is ? vs Kansas St.  
 Purdue QB Elijah Sindelar (concussion) is ? vs TCU.  
 Rice QB Wiley Green (head) has been downgraded to doubtful vs Texas. Tom Stewart has been named the starter.  
 Stanford QB KJ Costello (head) has been upgraded to probable vs Central Florida.  
 UCF QB Darriel Mack (ankle) has been upgraded to probable vs Stanford.

## Recapping Week One Best Bets

We had another sub-par week with our college best bets on these pages going 2-3. Our top play, the Nebraska Cornhuskers found a way to blow a 17-0 halftime lead at Colorado. To make up for it, Texas A&M did get a back-door cover vs Clemson in the final seconds. Virginia Tech looked okay early leading 24-3 early in the second half vs Old Dominion but then struggled from there and Purdue got a relatively easy cover vs Vanderbilt. The NFL was another story as all 3 of our best bets won and all of them were relatively easy including Houston who nearly pulled the outright upset over New Orleans on Monday Night Football. VIP customers did have another tough CFB week going 2-5 on the star-rated picks, but the NFL rebounded nicely to go a perfect 5-0 on star-rated picks.

## 2019 Nationwide Football Newsletter Contest (Regular Season Only)

We are happy to provide you with the records, standings and plays used from the Power Sweep (3★, 4★ & Underdog), Gold Sheet (Key Releases), Power Plays (4.5★ for College 4★ for NFL), Sports Reporter (Best & Super Bets), Winning Points (Best Bets & Preferred), Playbook (3-5★'s), Pointwise (Ratings 1-4), Powers' Picks (1-4★'s) and the Sunday Night Owl Report (1-4★'s).

College						NFL						College/NFL Combined					
Newsletter	W	L	T	%	Net	Newsletter	W	L	T	%	Net	Newsletter	W	L	T	%	Net
Gold Sheet	5	3	0	62.50%	2	<b>Powers' Picks</b>	<b>3</b>	<b>0</b>	<b>0</b>	<b>100.0%</b>	<b>3</b>	Sports Reporter	6	3	0	66.67%	3
Playbook	3	3	0	50.00%	0	Pointwise	3	0	0	100.0%	3	Gold Sheet	7	4	0	63.64%	3
Sports Reporter	3	3	0	50.00%	0	Sports Reporter	3	0	0	100.0%	3	<b>Powers' Picks</b>	<b>7</b>	<b>5</b>	<b>0</b>	<b>58.33%</b>	<b>2</b>
<b>Powers' Picks</b>	<b>4</b>	<b>5</b>	<b>0</b>	<b>44.44%</b>	<b>-1</b>	Night Owl	1	0	0	100.0%	1	Playbook	5	4	0	55.56%	1
Pointwise	5	7	0	41.67%	-2	Power Plays	1	0	0	100.0%	1	Pointwise	8	7	0	53.33%	1
Winning Points	5	7	0	41.67%	-2	Gold Sheet	2	1	0	66.67%	1	Power Plays	2	2	0	50.00%	0
Power Plays	1	2	0	33.33%	-1	Playbook	2	1	0	66.67%	1	Winning Points	7	8	1	46.67%	-1
Power Sweep	2	6	0	25.00%	-4	Winning Points	2	1	1	66.67%	1	Power Sweep	3	7	0	30.00%	-4
Night Owl	1	7	0	12.50%	-6	Power Sweep	1	1	0	50.00%	0	Night Owl	2	7	0	22.22%	-5
<b>Combined</b>	<b>29</b>	<b>43</b>	<b>0</b>	<b>40.28%</b>	<b>-14</b>	<b>Combined</b>	<b>18</b>	<b>4</b>	<b>1</b>	<b>81.82%</b>	<b>14</b>	<b>Combined</b>	<b>47</b>	<b>47</b>	<b>1</b>	<b>50.00%</b>	<b>0</b>

# CFB and NFL Schedules with Vegas and Brad Powers Lines Week 3 September 12th-16th

NFL Wk 2 Thursday, Sept 12th		Line	BP			Saturday, September 14th		Line	BP		
				All Times Eastern						All Times Eastern	
101 TAMPA BAY	8:20 p.m. NFL Network	49.5	48			167 SOUTHERN MISS	7:30 p.m.	49	-1		
102 CAROLINA		-6.5	-6			168 TROY		-2	47		
<b>Friday, September 13th</b>											
103 NORTH CAROLINA	6:00 p.m. ESPN	66.5	67			169 MASSACHUSETTS	6:00 p.m. Big Ten	66.5	66		
104 WAKE FOREST		-3	-1			170 CHARLOTTE		-19.5	-18		
105 KANSAS	7:30 p.m. ACC Network	51	54			171 OHIO	6:30 p.m.	49	50		
106 BOSTON COLLEGE		-21	-20			172 MARSHALL		-5.5	-4		
107 WASHINGTON ST	9:15 p.m. @NRG Stadium ESPN	-9	-8			173 KENT ST	7:00 p.m. ESPN2	53	54		
108 HOUSTON		74	80			174 AUBURN		-35.5	-34		
<b>Saturday, September 14th</b>											
109 OHIO ST	12:00 p.m. FOX	-16.5	-16			175 FLORIDA	7:00 p.m. ESPN	-8	-10		
110 INDIANA		61	58			176 KENTUCKY		50.5	46		
111 KANSAS ST	12:00 p.m. ESPN	52.5	54			177 GEORGIA ST	7:00 p.m.	69.5	66		
112 MISSISSIPPI ST		-7.5	-8			178 WESTERN MICHIGAN		-9	-10		
113 NC STATE	12:00 p.m. FOX Sports 1	-6.5	-6			179 TEXAS ST	7:00 p.m.	62	58		
114 WEST VIRGINIA		45.5	46			180 SMU		-17.5	-16		
115 MARYLAND	12:00 p.m. CBS College	-7	-6			181 DUKE	7:00 p.m.	-6.5	-9		
116 TEMPLE		66.5	62			182 MIDDLE TENNESSEE		51	51		
117 MIAMI, OH	12:00 p.m. ESPNU	49.5	50			183 HAWAII	7:30 p.m. Pac-12	59	59		
118 CINCINNATI		-17	-16			184 WASHINGTON		-21	-25		
119 PITTSBURGH	12:00 p.m. ESPN	53	52			185 TCU	7:30 p.m. Big Ten	-2.5	53		
120 PENN ST		-17.5	-16			186 PURDUE		51.5	-1		
121 EASTERN MICHIGAN	12:00 p.m. Big Ten	55	54			187 CLEMSON	7:30 p.m. ABC	-28	-26		
122 ILLINOIS		-7.5	-6			188 SYRACUSE		62.5	60		
123 ARKANSAS ST	12:00 p.m. ESPN2	58	57			189 FLORIDA ST	7:30 p.m. ACC Network	57	57		
124 GEORGIA		-32	-31			190 VIRGINIA		-7	-11		
125 AIR FORCE	1:00 p.m. Pac-12	58.5	55			191 OKLAHOMA	8:00 p.m. FOX	-23	-21		
126 COLORADO		-4	-1			192 UCLA		73.5	69		
127 SAN DIEGO ST	8:00 p.m.	-15.5	-16			193 NORTHERN ILLINOIS	6:00 p.m. FOX Sports 1	54.5	54		
128 NEW MEXICO ST		49.5	50			194 NEBRASKA		-14	-14		
129 FLORIDA ATLANTIC	2:00 p.m.	-2.5	-3			195 TEXAS	8:00 p.m. @NRG Stadium CBS College	-32	-31		
130 BALL ST		65	65			196 RICE		56	57		
131 NEW MEXICO	2:30 p.m. NBC	63	61			197 TEXAS TECH	10:30 p.m. ESPN	-2	-1		
132 NOTRE DAME		-35	-35			198 ARIZONA		77.5	81		
133 AKRON	3:30 p.m.	46	49			<b>NFL Wk 2 Sunday, Sept 15th</b>					
134 CENTRAL MICHIGAN		-3	-3			261 INDIANAPOLIS	1:00 p.m. CBS	44.5	45		
135 STANFORD	3:30 p.m. ESPN	61	61			262 TENNESSEE		-3	-1		
136 CENTRAL FLORIDA		-7.5	-7			263 L.A. CHARGERS	1:00 p.m. CBS	-2.5	-1		
137 ALABAMA	3:30 p.m. CBS	-25.5	-24			264 DETROIT		47.5	47		
138 SOUTH CAROLINA		61.5	58			265 BUFFALO	1:00 p.m. CBS	-2	-1		
139 EAST CAROLINA	3:30 p.m. CBS College	53	54			266 N.Y. GIANTS		43.5	41		
140 NAVY		-7	-8			267 ARIZONA	1:00 p.m. FOX	46.5	49		
141 ARMY	3:30 p.m. NFL Network	-17	-16			268 BALTIMORE		-13.5	-17		
142 UTSA		45	44			269 NEW ENGLAND	1:00 p.m. CBS	-19	-16		
143 USC	3:30 p.m. ABC	-4	-2			270 MIAMI		47.5	44		
144 BYU		55.5	54			271 DALLAS	1:00 p.m. FOX	-5	-3		
145 GEORGIA SOUTHERN	3:30 p.m. Big Ten	46	49			272 WASHINGTON		46.5	49		
146 MINNESOTA		-15.5	-17			273 JACKSONVILLE	1:00 p.m. CBS	43.5	42		
147 UNLV	3:30 p.m. Big Ten	53.5	52			274 HOUSTON		-9	-10		
148 NORTHWESTERN		-18.5	-20			275 SEATTLE	1:00 p.m. FOX	46.5	48		
149 OKLAHOMA ST	3:30 p.m. ESPN2	-14	-18			276 PITTSBURGH		-4	-8		
150 TULSA		65	64			277 SAN FRANCISCO	1:00 p.m. FOX	45	46		
151 MEMPHIS	3:30 p.m. ESPNU	-19	-20			278 CINCINNATI		-1.5	-2		
152 SOUTH ALABAMA		57.5	60			279 MINNESOTA	1:00 p.m. FOX	44	43		
153 IOWA	4:00 p.m. FOX Sports	-2	47			280 GREEN BAY		-3	-3		
154 IOWA ST		44.5	-1			281 KANSAS CITY	4:05 p.m. CBS	-7.5	-5		
155 COLORADO ST	4:00 p.m. SEC Network	64	59			282 OAKLAND		53	51		
156 ARKANSAS		-10	-11			283 NEW ORLEANS	4:25 p.m. FOX	52.5	54		
157 WKU	4:00 p.m. @Nashville, TN	51.5	50			284 L.A. RAMS		-2.5	-2		
158 LOUISVILLE		-10	-10			285 CHICAGO	4:25 p.m. FOX	-2.5	-2		
159 ARIZONA ST	4:00 p.m. FOX	42	44			286 DENVER		40	40		
160 MICHIGAN ST		-14	-16			287 PHILADELPHIA	8:20 p.m. NBC	-1.5	53		
161 NORTH TEXAS	4:15 p.m.	50.5	53			288 ATLANTA		51	-1		
162 CALIFORNIA		-14	-13			<b>NFL Wk 2 Monday, Sept 16th</b>					
163 LOUISIANA TECH	5:00 p.m.	-10.5	-11			289 CLEVELAND	8:15 p.m. ESPN	-2.5	44		
164 BOWLING GREEN		58.5	57			290 N.Y. JETS		46	-2		
165 BUFFALO	5:00 p.m.	-5.5	-4								
166 LIBERTY		55.5	56								

**BRAD POWERS' ATS STAT OF THE WEEK:**  
 In 19 series meetings since 1980, this week will be the first time Virginia has been favored over Florida St The Cavs have been an average dog of 15.6 ppg.

4★ = BEST  
3★ = BETTER  
2★ = GOOD  
1★ = FAIR

## THE POWERS' PACK

- 3★ VIRGINIA (-7) over Florida St
- 2★ Air Force (+4.5) over COLORADO
- 2★ Oklahoma St (-14) over TULSA
- 2★ WASHINGTON (-21) over Hawaii
- 2★ Florida/KENTUCKY UNDER 50.5

### Games in Rotation Order

### HOME TEAM IN CAPS

#### Friday, September 13th

**WAKE FOREST 34 North Carolina 33.** This is actually a "non-conference" game so that the schools can play each other more than every 7 years (not in same division). Last week North Carolina got a 10-yard TD pass with 1:01 left with the key play being a 4&17 conversion with under 3 minutes left in their 28-25 win over Miami, FL. North Carolina QB Sam Howell was 16 of 24 for 274 yards and 2 TD's. On the other side, Wake Forest had a 513-321 yard edge including 201-67 on the ground in their 20-point win at Rice. Wake QB Jamie Newman was 21 of 27 for 312 yards and 3 TD's. The Tar Heels have already pulled two outright upsets this season, can they make it 3 for 3? Lean NC.

**BOSTON COLLEGE 37 Kansas 17.** It was the same old Kansas last week as the Jayhawks fell to Coastal Carolina 12-7. The yards were close as Coastal only had a 291-280 yard edge. Kansas got a TD on their opening drive, then nothing. Pooka Williams, back from suspension had 99 yards rushing for Kansas. On the other side, BC had 24-20 first down and 518-364 yard edges including 346-215 on the ground in their 45-13 win over Richmond. This line seems a bit pricey. Pass.

† **Washington St 44 Houston 36.** @NRG Stadium in Houston, TX. This game will be played 5 miles from Houston's campus. Last week Washington St had a 594-355 yard edge in their blowout win. The Cougars converted 4 Northern Colorado TO's into 24 points and Washington St QB Anthony Gordon was 31 of 39 for 464 yards and 4 TD's. On the other side, Houston only had 20-16 first down and 380-318 yard edges in their win over Prairie View. The Cougars did lead 34-10 at halftime and they put the offense away in the second half. We don't think that will be the case here. We lean OVER.

#### Saturday, September 14th

**Ohio St 37 INDIANA 21.** Last week the Buckeyes destroyed Cincy with 31-13 first down and 508-273 yard edges including 270-107 on the ground. OSU QB Justin Fields was 20 of 25 for 224 yards and 2 TD's while RB JK Dobbins had 141 rushing yards. On the other side, Indiana had 26-5 first down and 555-116 yard edges in the blowout win over Eastern Illinois. The Hoosiers played 3 different QB's and they combined to go 30 of 41 for 441 yards and 4 TD's. Indiana has lost 24 straight games to the Buckeyes but have gone 7-1 ATS vs the Buckeyes the last 8 meetings with an average cover of 9 ppg. However, this is the shortest spread between the two teams since 2004 and the crowd will be 50/50. Pass.

**MISSISSIPPI ST 31 Kansas St 23.** Last week Kansas St had 25-5 first down and 521-140 yard edges including 333-61 on the ground in their blowout win over Bowling Green. Kansas St QB Skylar Thompson threw for 151 yards on just 13 attempts and Kansas St totaled more than 500 offensive yards in consecutive games for the first time in school history. On the other side, Mississippi St only had 21-17 first down and 386-344 yard edges vs Southern Miss. The Bulldogs did own the line of scrimmage with a 210-110 rushing yard edge but Miss St was +3 in TO's. QB Tommy Stevens opened the game a perfect 9 of 9 passing before being injured late in the second quarter. Stevens did not return to action in the second half and is ? here. Last year Miss St dominated Kansas St 31-10 with a 538-213 yard edge. Since 2010, Kansas St is 35-19-1 ATS (65%) as an underdog but that was under Bill Snyder. Until QB Stevens situation clears, we're passing.

**NC State 26 WEST VIRGINIA 20.** West Virginia is on a 2-12 ATS run as an underdog and last week were thumped by Missouri. "We were completely outplayed and out-coached in all phases," West Virginia coach Neal Brown said. "This is key, and I want you all to listen to me on this: I'm very disappointed in our performance, but I'm not discouraged. I want that to be heard loud and clear. I'm not discouraged." On the other side, NC State had 32-6 first down and 540-106 yard edges including 309-8 on the ground in their win over Western Carolina. Note that Western Carolina had several suspended players including their All-Conf QB. This line looks a little inflated to us.

**Maryland 34 TEMPLE 28.** Temple pulled the upset last year as 15.5-point dogs winning 35-14. The Owls held the Terps to only 195 total yards. We've upgraded the Terps more than any other team in college football so far. Last week they had 29-18 first down, 650-400 total yard and 354-70 rushing yard edges in their blowout win over Syracuse. "Our goal was to try to make them quit, and I think we did a good job at that," Maryland QB Josh Jackson said. It was the most lopsided victory by an unranked team over a ranked team since Oklahoma beat No. 13 Texas A&M 51-13 on Oct. 23, 1999. On the other side, Temple comes in off a bye. We're not sure if we've upgraded Maryland enough considering this line. Pass for now.

**CINCINNATI 33 Miami, Oh 17.** Cincinnati has won 13 straight games over rival Miami, Oh but 4 of the last 5 meetings have been decided by 7 points or less. The Bearcats were crushed by Ohio St last week. "We got our absolute butts whipped," said Luke Fickell, the third-year Bearcats coach who played and coached for years at Ohio State. "They just ruined any sentimental thought you had," he said. "I'm disappointed we couldn't give them a real game." On the other side, The Redhawks had a 349-282 yard edge but were out-FD'd 22-14 and were +2 in TO's in their blowout win over Tennessee Tech. We're passing.

**PENN ST 34 Pittsburgh 18.** Last week Pitt controlled the game vs Ohio with 22-12 first down and 481-212 yard edges including 160-35 on the ground. Pitt QB Kenny Pickett was 26 of 37 for 321 yards and a TD. Meanwhile, Penn St had a misleading blowout win over Buffalo. Buffalo actually had 22-14 first down and 429-357 yard edges including 184-78 on the ground. The Bulls led 10-7 at halftime and the only time Penn St was covering the spread happened after a 56-yard TD pass with 3:03

left. A 36-yard interception return TD to start off the 3Q woke up a "Sleepy Valley". Penn St QB Sean Clifford was 16 of 22 for 279 yards and 4 TD's. Penn St's blowout win over Pitt last year (outscored the Panthers 37-0 in the second half) should have the dog energized. We lean Pitt.

**ILLINOIS 30 Eastern Michigan 24.** Eastern Michigan is 13-2 ATS run as a road underdog. However, the Eagles did fail to cover in that role last week in a 38-17 loss at Kentucky. Meanwhile, Illinois trailed 10-0 after the 1Q but outscored Uconn 24-3 in the 2Q. The Illini had 21-16 first down and 357-285 yard edges including 130-10 on the ground. Illinois QB Brandon Peters was 24 of 35 for 227 yards and 4 TD's. It was the first non-conference road win for Illinois in a dozen years. We have a lean on the dog here.

**GEORGIA 44 Arkansas St 13.** Last week with the return of head coach Blake Anderson, the Red Wolves had 23-14 first down and 498-300 yard edges in their blowout win over UNLV. Arkansas St QB Logan Bonner was 22 of 37 for 284 yards and 2 TD's. Meanwhile, Georgia had 26-11 first down and 561-284 yard edges including 269-23 on the ground in their blowout win over Murray St. Georgia does have the big game vs Notre Dame on deck. We lean with the dog.

**2★ Air Force 28 COLORADO 27.** These two haven't met since 1974. This is nice scheduling spot here for Air Force catching Colorado off the dramatic come-from-behind OT win over Nebraska while the Falcons come in off a bye. Clearly, Air Force will treat this game like their Super Bowl vs an in-state "big brother" they never get to play. Note new Colorado head coach Mel Tucker did prep for Georgia Tech's option while D.C. at Georgia the last couple of years. However, Colorado has been out-gained in each of their first two wins and we feel this stadium will be a little sleepy considering the 11:00am local kick.

**San Diego St 33 NEW MEXICO ST 17.** The Aztecs come in riding high after beating UCLA for the first time ever (were 0-21-1 vs the Bruins prior). The Aztecs controlled the game with 22-16 first down and 373-261 yard edges. San Diego St QB Ryan Agnew was 23 of 31 for 293 yards and a TD. The difference in the game was time of possession and turnovers. The Aztecs controlled the ball for 38:16 and scored 10 points off a pair of UCLA turnovers. Meanwhile, New Mexico St comes in off blowout losses to Washington St and Alabama and take a big step down in class here. Considering San Diego St's track record in the favorite role (0-10 ATS last 10), we're passing.

**Florida Atlantic 34 BALL ST 31.** The honeymoon is over for Lane Kiffin who after a great first season in Boca Raton, is just 5-9 in his last 14 games. Last week, FAU disappointed a home crowd of 30,811, largest in the program's history in their blowout loss to UCF. "That's an embarrassing performance by us," Kiffin said. "It was a big game for a lot of people here, so I apologize to our fans, I apologize to the people who got us here, from the president down." Meanwhile, Ball St had 29-17 first down and 596-326 yard edges in a 28-point win over Fordham. Ball St QB Drew Plitt was the star going 32 of 40 for 439 yards and 6 TD's. The early money has come in on the dog here and we expect a close game.

**NOTRE DAME 48 New Mexico 13.** Former Notre Dame head coach Bob Davie (from 1997-2001) now at New Mexico, won't make the trip here due to health issues. Both teams come in off a bye after straight up wins in Week 1. The Irish were +2 TO's and allowed 249 rushing yards (5.3 ypc) to Louisville but the ND defense did make adjustments after allowing 163 yards and 14 points their first 2 drives. This is the largest favorite role for Notre Dame since 1996 and ND is just 9-18-1 ATS laying 3 TD's or more since Lou Holtz left in 1996. We actually lean UNDER.

**CENTRAL MICHIGAN 26 Akron 23.** The Chips were crushed by Wisconsin last week 61-0. Meanwhile, the final stats were close in Akron's 31-20 loss to UAB. However, note that UAB did miss two FG's and led Akron 31-6 into the 4Q. Akron QB Kato Nelson was 25 of 44 for 359 yards and 2 TD's. Note that Central Michigan QB Quentin Dormady (knee) is ? here. We're passing.

**CENTRAL FLORIDA 34 Stanford 27.** Last week UCF had a 574-314 yard edge including 312-137 on the ground in their blowout win over FAU. Dillon Gabriel got the start for UCF and while he was only 7 of 19, he threw for 245 yards and 2 TD's. Darriel Mack who started the final couple of games last season has been cleared for this game. On the other side, Stanford was whipped at USC as the Cardinal played without starting QB KJ Costello. USC trailed 20-10 but scored the game's final 35 points. Stanford QB Davis Mills was 22 of 36 for 237 yards and a 1-1 ratio but the Cardinal defense was torched by 377 yards. Costello will be back here and the Cardinal are 19-9-1 ATS as an underdog since late 2008 including 10-3 ATS as a dog of a TD or more. However, note Stanford's defense collapsed in the second half vs USC's quick tempo and now go to the heat and humidity of Florida.

**Alabama 41 SOUTH CAROLINA 17.** This is the largest home underdog role for South Carolina since 1999 and head coach Will Muschamp is on a 10-3 ATS run as a dog. Last week South Carolina had 29-14 first down and 775-267 yard edges including 493-72 on the ground in their blowout win over Charleston Southern. South Carolina frosh QB Ryan Hilinski in his first start was 24 of 30 for 282 yards and had 2 TD's. South Carolina set school records for most yards (775) and rushing yards (493) On the other side, Alabama had 23-14 first down and 603-262 yard edges including 318-101 on the ground in their blowout win over New Mexico St. The Tide were +3 TO's, but as usual under Saban sat on the ball late and didn't score in the 4Q. It's tough going against Saban with a frosh QB, but we lean with SC.

**NAVY 31 East Carolina 23.** This is a really nice scheduling spot for what we feel is an improved Navy team this year. The Middies are coming off a bye after a blowout win to start the season and have a bye on deck. We really think they will zero in on this game. We were all set in making Navy a play on these pages but diving deep into new East Carolina head coach Mike Houston's background, he actually ran the option while he was the head coach at Lenoir-Rhyne and the Citadel from 2011-2015. Now it's only a lean on Navy.

**Army 30 UTSA 14.** Army comes in off the last second OT loss to Michigan last week, a game they could have easily won if not for some mis-timed TO's and a long missed FG. However, now they are in the unique role of double-digit favorite. Army is just 14-30 ATS laying double-digits since 1986. UTSA comes in off a blowout loss at Baylor where they wilted in the 100 degree temps. We're passing.

**Use 28 BYU 26.** Last week, USC had a 492-335 yard edge including a 11.4-6.6 yards per pass advantage in their surprising blowout win over Stanford. USC trailed 20-10 but scored the game's final 35 points. USC true frosh QB Kedon Slovis was 28 of 33 for 377 yards and 3 TD's but now Slovis is making his first road start here. Meanwhile, BYU got a shocking win over Tennessee in OT last week. The Vols controlled the game for most of it (led 13-3 at halftime) but were stopped on 4th&short twice inside BYU's 30-yard line. BYU got a 64-yard pass on 3&6 with :06 left in the game! It's tough trusting USC head coach Clay Helton and a true frosh making his first road start here. Helton is on a 7-15-1 ATS run as a favorite.

**MINNESOTA 33 Georgia Southern 16.** Much was expected of Minnesota this year and while the Golden Gophers are 2-0, they've been fortunate to get there. Last week vs Fresno St, Minnesota had 24-21 first down and 380-345 yard edges including 146-57 on the ground. However, Minnesota got a 20-yard TD pass on 4th&13 with :46 left to force OT and won it there on a dramatic interception. On the other side, Georgia Southern had a 458-359 yard edge including 395-52 on the ground in their 8-point win over Maine. QB Justin Tomlin starting for Shai Werts ran for 132 yards and was 4 of 9 for 63 yards for Georgia Southern. Werts is ? here, we lean with Minnesota to finally get some breathing room.

**NORTHWESTERN 36 UNLV 16.** The Wildcats come in off a bye after their opening season loss at Stanford in which their backers suffered a bad beat with a fumble return TD in the final seconds. Northwestern also lost QB TJ Green (foot) for the season and Hunter Johnson will start here. Meanwhile, UNLV is off a blowout loss to Arkansas St and it looks like it could be a tough year for head coach Tony Sanchez. UNLV QB Armani Rogers really struggled as he was 8 of 23 for 42 yards and an INT. Not sure it gets any better here vs a stingy Northwestern D.

**2★ Oklahoma St 41 TULSA 23.** We like Oklahoma St here. The Cowboys are fresh off back-to-back comfortable wins including last week as OSU had 25-13 first down and 580-318 yard edges including 413-157 through the air in a blowout win over McNeese St. Oklahoma St played 3 different QB's and they combined to go 23 of 32 for 413 yards and 5 TD's. Meanwhile, Tulsa had 27-18 first down and 539-348 yard edges including 256-115 on the ground in a road win at San Jose St. Oklahoma St is a perfect 3-0 SU/ATS vs Tulsa under Gundy and they've covered those games by 20 ppg and averaged 61 ppg on offense. We don't think they'll take Tulsa lightly again here. Also remember, there will be a lot of Oklahoma St fans in the stands with Stillwater only an hour drive away.

**Memphis 40 SOUTH ALABAMA 20.** Last year, Memphis only beat South Alabama 52-35 as 31.5-point favorites. Last week Memphis had 23-14 first down and 575-258 yard edges in a blowout win over Southern. The Tigers, leading 27-17 at halftime, scored 21 third-quarter points and held the Jaguars to only 15 yards total offense in the second half. On the other side, South Alabama had 29-18 first down and 538-265 yard edges including 413-142 on the ground. It's a lot of points to lay on the road but we have a slight lean on Memphis.

**IOWAST 24 Iowa 23.** The Hawkeyes have won 4 straight in the "Cy-Hawk" rivalry but the last two have been close. This will be the first ever trip to Ames, Iowa for ESPN's College GameDay show and it's a big deal (see first trip to Washington St last year). Last week, Iowa dominated just as the 30-0 final would indicate vs Rutgers as the Hawkeyes had 23-5 first down and 438-125 yard edges. Iowa QB Nate Stanley was 16 of 28 for 236 yards and 3 TD's. On the other side, Iowa St comes in fresh off a bye after a near upset loss to Northern Iowa in Week 1. A lot of times, the market overreacts to FCS finals too much even though Northern Iowa is a Top 10 FCS team and currently power-rated higher than 33 FBS teams in Jeff Sagarin's ratings. Finally, keep in mind, talented Iowa St B Brock Purdy didn't play in last year's game vs Iowa. We like Iowa St here.

**ARKANSAS 35 Colorado St 24.** Arkansas is off 2 sub-par performances this year. Last week in a 31-17 loss at Ole Miss, Arkansas' two TD's came via a 68-yard fumble return and a 6-yard TD pass with 1:21 left in the game after a garbage time 7-play 81-yard drive. On the other side, Colorado St had 25-12 first down and 582-215 yard edges including 189-64 on the ground in a win over Western Illinois. It could've been worse but Colorado St missed 3 FG's. This is a major revenge spot for Arkansas after losing last year in Fort Collins. The Hogs actually led the game 27-9 in the 3Q before allowing the final 25 points including the game-winning TD with :08 left. Slight lean on the home team.

† **Louisville 30 Western Kentucky 20.** @Nashville, TN. Louisville looks improved under first-year coach Scott Satterfield. Last week, Louisville had 23-10 first down and 542-172 yard edges including 322-130 on the ground in a 42-0 win over Eastern Kentucky. Louisville QB Jawon Pass was 12 of 19 for 196 yards and 4 TD's. On the other side, WKU had a 339-217 yard edge in their upset win at FIU. Note that FIU had a 1st and Goal and the WKU 2-yard line in the 4Q but managed ZERO points. Don't see much value here at a neutral site. Pass.

**MICHIGAN ST 30 Arizona St 14.** Michigan St is in revenge mode after last year's blown lead in the 4Q late at night in the desert. Last week, MSU had 31-18 first down and 582-352 yard edges including 251-67 on the ground in a blowout win over Western Michigan. MSU QB Brian Lewerke threw for 314 yards and 3 TD's, RB Elijah Collins ran for 192 yards and WR Darrell Stewart had 185 yards receiving. Head coach Mark Dantonio won his 109th game for the Spartans, matching Duffy Daugherty's mark. On the other side, Arizona St only had a 395-305 yard edge and only managed 91 rushing yards in a 19-7 win over Sacramento St. Arizona St true frosh QB Jayden Daniels was 17 of 27 for 304 yards and a TD but now this is his first road start vs one of the nation's best defenses.

**CALIFORNIA 33 North Texas 20.** Obviously, we missed the boat big time fading Cal last week as they pulled the outright upset over Washington. Washington had 23-20 first down and 348-303 yard edges but were -2 in TO's. Cal did get their running game going with 192 yards. Meanwhile, North Texas was beat up pretty good at SMU last week as the Ponies had a 503-396 yard edge. We expected to be on North Texas in this match-up but the line came in a little short.

**Louisiana Tech 34 BOWLING GREEN 23.** Last week, Louisiana Tech had a misleading 20-14 win. Grambling actually had 32-20 first down and 455-390 yard edges including 216-170 on the ground. Grambling was stopped on downs at the Louisiana Tech 5-yard line on their opening drive, missed a field goal and also fumbled

at the LT 8-yard line and were stopped on downs at the LT 9-yard line in the second half. There was nothing misleading about Bowling Green's blowout loss at Kansas St. Kansas St had 25-5 first down and 521-140 yard edges including 333-61 on the ground. Bowling Green has no home field edge as the Falcons are 3-16 ATS their last 19 home games.

**Buffalo 30 LIBERTY 26.** Last week Buffalo had 22-14 first down and 429-357 yard edges including 184-78 on the ground but somehow lost 45-13 at Penn St. The Bulls led 10-7 at halftime and the only time Penn St was covering the spread happened after a 56-yard TD pass with 3:03 left. Meanwhile, Liberty is off to a slow start under Hugh Freeze. Last week, their opponent ULL had 2 turnovers and 3 missed FG's and still covered. A lot of money on Wednesday morning came in on the Bulls, we're passing.

**Southern Miss 24 TROY 23.** Do we really know if Troy is any good this year? They've only played Campbell and had a bye last week. Meanwhile, Southern Miss was closer than the final vs Miss St last week as they were -3 in TO's. Southern Miss has Alabama on deck so this is a very important game to them. We like the road dog.

**CHARLOTTE 42 Massachusetts 24.** This is a huge line for a Charlotte program that is only in Year 5 of FBS action and have never had a winning season. With that said, last week Charlotte lost 56-41 to Appalachian St but the 49ers had 24-16 first down and 533-458 yard edges. However, Charlotte was -2 in TO's. Appalachian St also got a blocked punt return TD and then got a 45-yard outside kick return TD with 3:10 left. On the other side, UMass is the worst team in the FBS. Last week, they got drilled by FCS Southern Illinois. Southern Illinois had 21-15 first down and 502-321 yard edges including 237-123 on the ground. We're passing.

**MARSHALL 27 Ohio 23.** Last week, Ohio fell at Pitt 20-10 even though a ton of money came in on the Bobcats. Dealing with the after effects of a fever that left him at less than 100%, Ohio QB Nathan Rourke hit on 15 of 27 passes for 177 yards and couldn't make anything happen with his legs. Rourke, who ran for 75 yards in Ohio's season opener against Rhode Island, finished with minus-43 yards on the ground. The Bobcats punted 10 times, finished with just 12 first downs and produced 212 total yards. Meanwhile, Marshall only lost by 7 at Boise St but the Broncos dominated much more than the 14-7 final indicated. Marshall didn't convert a single first down in the second half. Slight lean on the dog.

**AUBURN 44 Kent St 10.** Last week, Auburn had 20-12 first down and 379-223 yard edges in a 24-6 win over Tulane. On the other side, Kent St escaped an upset loss to Kennesaw St in OT. Kennesaw had 23-16 first down and 437-337 yard edges including 252-145 on the ground. With Auburn having a big road game at Texas A&M on deck, we don't want to lay the big number here.

**2★ UNDER 50.5 Florida 28 KENTUCKY 18.** Last year Florida had their 31-game series winning streak vs Kentucky snapped. Last week, Florida had 26-8 first down and 543-194 yard edges including 231-54 on the ground in their blowout win over UT-Martin. Florida QB Feleipe Franks was 25 of 27 for 270 yards and 2 TD's. On the other side, Kentucky only had a 461-386 yard edge vs Eastern Michigan but did control the line of scrimmage with a 239-49 rushing yard edge. Kentucky QB Terry Wilson was hurt in the game (out for the season with a knee injury). His replacement Sawyer Smith was 5 of 9 for 76 yards and 2 TD's. We look for the Gators defense to cause some havoc here but without key play-making WR Toney, we LOVE the UNDER.

**WESTERN MICHIGAN 38 Georgia St 28.** Last year Western Michigan won 34-15 at Georgia St. However, the money has come in on Georgia St this week as this line has dropped a couple of points. Last week, Georgia St maybe flat off the big win vs Tennessee trailed Furman 20-3 late in the 2Q but they rallied for a win thanks to QB Dan Ellington who was 29 of 37 for 362 yards and 5 TD's. Meanwhile, Western Michigan was crushed by Michigan St. We're fading the line move and lean with the home team.

**SMU 37 Texas St 21.** Last week Texas St had 27-16 first down and 444-293 yard edges but were -2 in TO's in their 23-14 loss vs Wyoming. Texas St led 14-10 at halftime, but a 72-yard interception return TD mid-way through the 3Q was the play of the game. The Bobcats also missed 2 FG's and ended the game on the Wyoming 6-yard line. On the other side, SMU got an impressive win over North Texas. SMU had a 503-396 yard edge and SMU QB Shane Buechele was 21 of 31 for 292 yards and 3 TD's. We lean with the dog.

**Duke 30 MIDDLE TENNESSEE 21.** It might be a little scary but we're taking the road favorite here. The Blue Devils had 31-10 first down and 574-249 yard edges last week in a blowout win over NC A&T. Keep in mind, NC A&T, reigning champions of the MEAC, beat a FBS opponent each year from 2016-18. Duke QB Quentin Harris had himself a game as he was 30 of 42 for 345 yards and 4 TD's while also adding 83 rushing yards and a TD. On the other side, Middle Tennessee had 31-22 first down and 604-466 yard edges and averaged 10.4 yards per play in a non-covering win over Tennessee St. However, the score was only 10-6 MT at the half and Tennessee St was intercepted inside the MT 15-yard line twice.

**2★ WASHINGTON 42 Hawaii 17.** Last week Washington disappointed us greatly on these pages losing outright as a 2-TD favorite. Washington had 23-20 first down and 348-303 yard edges but were -2 in TO's. A severe thunderstorm delayed the game early in the first quarter and left only a few fans waited out the lengthy delay when the game resumed at 10:30 p.m. and finally ended at 1:22 a.m. (4:22 am ET!). Now they face a fat and happy Hawaii team off 2 wins vs Pac-12 opponents. However, this is their first road trip of the season and we think a focused Washington team will roll here. Note that Hawaii has often times rolled over in the big road dog scenario as they are 0-17 SU/5-12 ATS (-8.3 ppg vs spread) the last 10 years catching 20 or more on the road.

**PURDUE 27 TCU 26.** There's been a 4.5-point line move here from the early Sunday lines which tells us Purdue QB Elijah Sindelar could be more doubtful instead of questionable here. Last week Sindelar was 34 of 52 for 509 yards and 5 TD's in a 42-24 win over Vanderbilt that cashed on these pages. Purdue WR Rondale Moore also had 220 receiving yards. On the other side, TCU comes in fresh off a bye after a less-than inspiring win over Arkansas Pine Bluff in the opener. We're passing until Sindelar's status clears (we like Purdue if he plays).



## Week 3 Computer Projected Lines for Every CFB Game

For the past couple of seasons we have posted computer projected lines at pregamed.com. Games where there was of difference of more than 3 points saw our computer lines actually beat the Vegas line at a 224-176-10 (56%) clip the last three years. That's pretty solid and actually better than our own handicapping in some seasons. Last week's plays went 9-6-1 and now the record for this year is 12-13-1. Keep in mind, these computer lines don't take into consideration off-the-field factors like revenge or flat spots. They are basically a power-rating number difference between the two teams that also takes into consideration the home field advantage.

Of the 13 games where our computer is off more than 3 points compared to the Vegas line (highlighted), our favorite team this week to back would be XXX.

The Comp column is the computer projected line and the Diff column is the difference between the Vegas line and the Computer line. "+" numbers in the difference column say back the underdog. "-" numbers in the difference column say back the favorite. Let us know if you have questions.

### Friday, September 13th

Game	Line	Comp	Diff
103 North Carolina			
104 Wake Forest	-3	+0.1	+3.1
105 Kansas			
106 Boston College	-21	-19.8	+1.2
107 Washington State			
108 Houston	+9	+9.7	-0.7

### Saturday, September 14th

Game	Line	Comp	Diff
109 Ohio State			
110 Indiana	+16	+15.2	+0.8
111 Kansas St			
112 Mississippi St	-7.5	-10.1	-2.6
113 NC State			
114 West Virginia	+6.5	+2.1	+4.4
115 Maryland			
116 Temple	+7	+3.8	+4.2
117 Miami (OH)			
118 Cincinnati	-17	-17.0	0.0
119 Pittsburgh			
120 Penn State	-17	-18.2	-1.2
121 Eastern Michigan			
122 Illinois	-7.5	-8.4	-0.9
123 Arkansas State			
124 Georgia	-33.5	-33.5	0.0
125 Air Force			
126 Colorado	-4.5	-4.1	+0.4
127 San Diego State			
128 New Mexico State	+16	+18.0	-2.0
129 Florida Atlantic			
130 Ball State	+2.5	+3.4	-0.9
131 New Mexico			
132 Notre Dame	-35	-40.3	-5.3
133 Akron			
134 Central Michigan	-3	-5.0	-2.0
135 Stanford			
136 Central Florida	-7.5	-8.7	-1.2
137 Alabama			
138 South Carolina	+25.5	+18.9	+6.6
139 East Carolina			
140 Navy	-7	-8.6	-1.6
141 Army			
142 Texas San Antonio	+17	+16.7	+0.3
143 USC			
144 BYU	+4	+0.2	+3.8
145 Georgia Southern			
146 Minnesota	-15.5	-19.6	-4.1
147 UNLV			
148 Northwestern	-18.5	-21.4	-2.9

Game	Line	Comp	Diff
149 Oklahoma State			
150 Tulsa	+14	+13.1	+0.9
151 Memphis			
152 South Alabama	+19	+23.2	-4.2
153 Iowa			
154 Iowa State	+2.5	-0.5	+3.0
155 Colorado State			
156 Arkansas	-9.5	-12.3	-2.8
157 Western Kentucky			
158 Louisville	-10	-9.5	+0.5
159 Arizona State			
160 Michigan State	-13.5	-13.6	-0.1
161 North Texas			
162 California	-14	-18.1	-4.1
163 Louisiana Tech			
164 Bowling Green	+10.5	+10.6	-0.1
165 Buffalo			
166 Liberty	+4.5	+3.9	+0.6
167 Southern Miss			
168 Troy	-2.5	-1.1	+1.4
169 Massachusetts			
170 Charlotte	-19.5	-17.4	+2.1
171 Ohio			
172 Marshall	-5.5	-4.9	+0.6
173 Kent State			
174 Auburn	-35	-37.6	-2.6
175 Florida			
176 Kentucky	+8	+10.5	-2.5
177 Georgia State			
178 Western Michigan	-9.5	-12.1	-2.6
179 Texas State			
180 SMU	-17.5	-16.1	+1.4
181 Duke			
182 Middle Tennessee	+6.5	+7.4	-0.9
183 Hawaii			
184 Washington	-21	-20.2	+0.8
185 TCU			
186 Purdue	+2.5	-0.1	+2.6
187 Clemson			
188 Syracuse	+27.5	+24.2	+3.3
189 Florida State			
190 Virginia	-7	-8.1	-1.1
191 Oklahoma			
192 UCLA	+23	+15.4	+7.6
193 Northern Illinois			
194 Nebraska	-14	-15.5	-1.5
195 Texas			
196 Rice	+32	+36.2	-4.2
197 Texas Tech			
198 Arizona	+2.5	+1.5	+1.0

## Top 20 CFB ATS Trends for Week 3

1. Indiana has lost 24 straight games to the Buckeyes but have gone 7-1 ATS vs the Buckeyes the last 8 meetings with an average cover of 9 ppg. This week, the Hoosiers are 15.5-point home dogs vs the Buckeyes.
2. Since 2010, Kansas St is 35-19-1 ATS (65%) as an underdog but that was under former head coach Bill Snyder. This week the Wildcats are 7.5-point dogs at Mississippi St.
3. West Virginia is on a 2-12 ATS run as an underdog. This week the Mountaineers are 6.5-point home dogs to NC State.
4. Cincinnati has won 13 straight games over rival Miami, Oh but 4 of the last 5 meetings have been decided by 7 points or less. This week the Bearcats are 17-point home favorites.
5. Eastern Michigan is 13-2 ATS run as a road underdog. This week they are 7.5-point dogs at Illinois.
6. San Diego St is on a 0-10 ATS run as a favorite. This week the Aztecs are laying 16-points at New Mex St.
7. Notre Dame is a 35-point favorite vs New Mexico this week. That's the largest favorite role for Notre Dame since 1996.
8. Also note that Notre Dame is just 9-18-1 ATS laying 3 TD's or more since Lou Holtz left in 1996.
9. Stanford is 19-9-1 ATS as an underdog since late 2008 including 10-3 ATS as a dog of a TD or more. This week the Cardinal are 7.5-point dogs at UCF.
10. South Carolina is a 25.5-point underdog at home to Alabama this week. That's the largest home dog role for them since 1999 when they were 27-point dogs to Florida (lost 20-3).
11. Alabama head coach Nick Saban is 34-0 SU/24-8-2 ATS laying anywhere from 20-29.5 points since 2008. This week the Crimson Tide are 25.5-point favorites at South Carolina.
12. East Carolina is 3-13-1 ATS as a road underdog. This week the Pirates are 7-point underdogs at Navy.
13. Army is just 14-30 ATS laying double-digits since 1986. This week the Black Knights are 17-point favorites at UTSA.
14. UNLV is on a 24-11 ATS run as a road underdog. This week the Rebels are 18.5-point underdogs at Northwestern.
15. Iowa is 16-1-1 ATS as a road favorite. This week the Hawkeyes are 2.5-point favorites at Iowa St.
16. Bowling Green has no home field edge as the Falcons are 3-16 ATS their last 19 home games. This week BG is a 10.5-point underdog hosting Louisiana Tech.
17. In 19 series meetings since 1980, this week will be the first time, Virginia has been favored over Florida St (average dog of 15.6 ppg).
18. UCLA is 4-0 ATS since 1980 catching 14 or more points at home. This week the Bruins are 23-point underdogs to Oklahoma.
19. Nebraska is on a 3-12 ATS run at home. This week the Huskers are 14-point favorites vs Northern Illinois.
20. Texas head coach Tom Herman is just 15-22-2 ATS as a favorite in his career.

4★ = BEST 3★ = BETTER 2★ = GOOD 1★ = FAIR	<b>THE POWERS' PACK</b>
	<b>3★ PITTSBURGH (-4) over Seattle</b>
	<b>2★ MIAMI (+19) over New England</b>
	<b>2★ OAKLAND (+7.5) over Kansas City</b>

*Games in Rotation Order* *HOME TEAM IN CAPS*

**Thursday, September 12th**  
**CAROLINA 27 Tampa Bay 21.** The Panthers are playing back-to-back home games after a disappointing 3-point loss to the Rams where QB Cam Newton threw a pair of INT's. Meanwhile, the Bucs also had TO issues in Week 1 as they had 4 including two "Pick 6's" in their 14-point loss to the 49ers. Winston now has 79 TO's in 57 NFL games. Thursday Night favorites have gone 38-10 SU/31-14-3 (69%) ATS the last 3 years and home teams in general on Thursdays are 104-86-7 ATS (54.7%) since 2000. With that being said, we're passing.

**Sunday, September 15th**  
**TENNESSEE 23 Indianapolis 22.** Tennessee has to be glad they won't be seeing Andrew Luck again as he was 11-0 vs them. The Titans easily cashed on these pages last week with an outright blowout upset win at Cleveland. The game was a little closer than the final due to Cleveland's TO's (TEN outscored the Browns 21-0 in the 4Q). The Colts could've beat the Chargers last week outright if not for a pair of missed FG's and an extra point by K Adam Vinatieri. We lean with Indy here.

**L.A. Chargers 24 DETROIT 23.** What will the mindset be here for the Lions after blowing a 24-6 lead last week in Arizona? Meanwhile, the Chargers have to feel fortunate to win in OT over the Colts last week as Indy K Adam Vinatieri missed two FG's and an extra point. On the bright side, it doesn't look like the Bolts will need Melvin Gordon anytime soon as Austin Ekeler had 154 total yards and 3 TD's. The Chargers are on a 22-8-2 ATS run on the road. This makes sense as they really don't have a significant homefield edge. So they under perform at home, then get downgraded too much in the market place where there's often times value on them away from home. With that being said, it is their first dome game in 3 years and we lean with Detroit here.

**Buffalo 21 N.Y. GIANTS 20.** Since 1989, NFL teams that are -3 in TO's have won just 10% of the time (102-889-1) and covered only 11.5% of the time (111-856-25). However, the Bills managed to pull an outright upset over the Jets last week despite being -3 in TO's. Yes, they had to erase a 16-0 deficit, but that deficit shouldn't have been there to overcome in the first place. The Bills had a 370-223 yard edge. Meanwhile the Giants were crushed by the Cowboys 35-17 allowing Dallas QB Dak Prescott to post a perfect QB Rating. Too close to call.

**BALTIMORE 33 Arizona 16.** Two of the last 3 Heisman winners meet here. Both played well last week considering Lamar Jackson had 324 passing yards and 5 TD's in Baltimore's annihilation of Miami. Keep in mind, Jackson only threw 6 TD passes all of last year! Meanwhile, Kyler Murray overcame a poor start to throw for 308 yards in the Cardinals huge comeback tied vs the Lions (trailed 24-6). However, now Murray's making his first road start in a 10am PT local start time. We don't recommend doing this often but we're not afraid to lay the lumber here. Also note that double-digit favorites in the NFL are 47-26-3 ATS (64%).

**2★ Miami (plus the points) New England 30 MIAMI 14.** This is the 2nd largest away favorite role in NFL history. The only one bigger was New England laying 20 at Baltimore back in 2007 (Pats only won by 3). New England comes in off the 30-point beat down of Pittsburgh on SNF. Obviously, Week 1 wasn't a good look for the Dolphins as they allowed the most points in team history. Note that since 1989, teams off a 30-point loss in the NFL have gone on to cover 55% of the time the next week (195-160-13). The market usually throws them in the trash and note look-ahead line for this game was New England -11. Also note New England is just 1-5 SU/ATS their last 6 visits to Miami (-9.1 ATS ppg). This is a match-up between Belichick and a former assistant in Brian Flores, will he want to embarrass him? We don't think so.

**Dallas 26 WASHINGTON 23.** The Cowboys come in off an impressive 35-17 win over the Giants last week where QB Dak Prescott had a perfect QB rating (405 pass yards and 4 TD's). Meanwhile, the Redskins are coming off a game where they blew a 17-0 lead at Philadelphia. Keenum threw for 380 yards and did make Washington backers happy when he got a TD pass with :06 left for the backdoor. Whenever you have a road favorite, you have to ask yourself...would you be willing to lay it after adjusting for home/away. In this instance, Dallas is a 5-point road favorite. If you consider homefield to be worth 3 points, that means Dallas would be laying 11 at home. We'd like Washington at that line and lean with them here.

**HOUSTON 26 Jacksonville 16.** Obviously, Nick Foles will be out for a couple of months for Jacksonville after getting injured in last week's loss to Kansas City. Surprisingly, 6th-round rookie Gardner Minshew wasn't that bad in relief going 22 of 25 for 275 yards and a 2-1 ratio. However, now the Texans have film on him and he makes his first road start here. Houston is coming off that devastating loss to New Orleans on MNF (we still cashed with them on these pages). Watson was brilliant but was also sacked 6 times. No strong opinion here.

**3★ PITTSBURGH 28 Seattle 20.** We like the Steelers here. First we already mentioned in the Dolphins write-up that teams coming off 30-point losses are profitable long term in the NFL (55%, 30 years). According to Marc Lawrence's Playbook, the Steelers are 8-0 SU/ATS with Roethlisberger whenever they are coming off an ATS loss of more than 18 points. Also the Seahawks had a very misleading win over the Bengals last week where Seattle was out-gained 429-233 but still managed a win. Seattle has not been good on the road early in the season. Since 2007, Seattle in weeks 1 and 2 on the road are just 1-14 SU/1-13-1 ATS. Add it all up and you have our favorite NFL pick of the week.

**CINCINNATI 24 San Francisco 22.** All the money has poured in on the Bengals here as the 49ers have went from 2.5-point favorites to now 1.5-point underdogs. Andy Dalton is off a career day last week as he threw for 418 yards in the Bengals near shocking upset at Seattle (Cincy did have a 429-233 yard edge). On the other side, the 49ers did get out-gained vs Tampa Bay last week 295-256 as they had 4 takeaways including a pair of "Pick 6's". San Francisco is making back-to-back road trips to the Eastern Time Zone where they are 1-12 SU (they did stay in Youngstown, OH to prep). We lean with the Bengals but it looks like so does everyone else.

**GREEN BAY 23 Minnesota 20.** A great Week 2 match-up considering the two team's performances in Week 1. The Vikings somehow crushed the Falcons (much to our delight on these pages) with QB Kirk Cousins only attempting 10 passes (Vikings were out-gained 345-269). Minnesota's 28 points came off 3 Atlanta TO's and a blocked punt. Green Bay does have a couple extra days to prep for this one after their 10-3 win at Chicago last Thursday. However, Minnesota is on a 3-0-1 SU in the series. We don't see much value here on the side but we do lean UNDER.

**2★ Oakland (plus the points) Kansas City 28 OAKLAND 23.** We lean with Oakland here who looked very capable in the win over Denver on MNF. Despite playing without two projected starting OG's, the Raiders OL allowed zero sacks and all of the newly acquired players (rookies and vets) seemed to produce. QB Derek Carr was 22 of 26 for 259 yards (who needs AB?). Meanwhile, the Chiefs are playing back-to-back road games (3rd straight if you count preseason) and will be missing Tyreek Hill. QB Mahomes is brilliant (378 pass yards and 3 TD's) but this line is too pricey.

**L.A. RAMS 28 New Orleans 26.** Obviously, a rematch of last year's classic NFC Championship game where the Saints will have revenge here after the controversial no-call on the pass interference (they still had to play an entire OT session but we digress). New Orleans did get a dramatic win over Houston on MNF but we still cashed on these pages fading them as they are now on a 1-10 ATS run in the first two weeks of the season the last 6 years. Meanwhile, the Rams escaped Carolina with a 3-point win as RB Gurley looked okay (97 rushing yards). We're passing for now.

**Chicago 21 DENVER 19.** Denver has been remarkably tough at home early in the season. In the last 30 years they are 33-3 SU/22-11-3 ATS at home in Weeks 1 and 2 and they've gone 22-1 SU recently. The Bears do have a big rest advantage here having played last Thursday (ugly 10-3 loss at home to Green Bay) while the Broncos are coming of the MNF loss at Oakland. Teams in this spot having the extra rest advantage are 11-3 ATS (+4.9 ppg) the last 4 years.

**ATLANTA 27 Philadelphia 26.** Philly has had Atlanta's number the last 3 years going 3-0 SU/ATS and holding the Falcons offense to just 12.3 ppg. Last week the Eagles overcame a sluggish start (trailed 17-0 early vs Washington) and nearly got the cover as a 10-point favorite (back-doored with :06 left). QB Wentz did throw for 313 yards and 3 TD's. Atlanta QB Matt Ryan is 10-1 SU/ATS in home openers. We lean with the Falcons to get the outright win here.

**Monday, September 16th**  
**N.Y. JETS 23 Cleveland 21.** These two actually met in the first MNF telecast all the way back in 1979. Both teams had Week 1 performances to forget. The Jets blew a 16-0 lead vs the Bills and somehow lost outright despite being +3 in TO's. Meanwhile, we easily cashed fading the over-hyped Cleveland Browns who fell to 1-19-1 SU in season openers since returning in 1999. The Browns were penalized 18 times (most since 1951!). Note that Gregg Williams defensive coordinator at Cleveland for 3 years and interim coach for last season is now the D.C. at the Jets.

**NFL VIP Late Phone/Email Service (Includes Every NFL ★-Rated Play): Just \$399**  
**Call 1-702-419-0473! Mention Special Code: Page 7**

**2018-19 Season: 103-64-1 (62%)**

Week 1 College:	3★ Stanford -2.5 over ARIZONA ST	W \$300
3★ Northern Illinois +10.5 over IOWA	2★ UAB PK over North Texas	W \$200
2★ Florida Atlantic +21 over OKLAHOMA	2★ UTAH -6.5 over USC	W \$200
2★ UMass +18 over BOSTON COLLEGE	2★ Nevada +3 over HAWAII	W \$200
2★ Texas -13.5 over Maryland	<b>Week 7 NFL:</b>	
2★ WYOMING +1.5 over Washington St	3★ JACKSONVILLE -4.5 over Houston	L (\$330)
<b>Week 2 College:</b>	2★ Minnesota -3 (-120) over N.Y. JETS	W \$300
3★ Georgia Tech (-3) over SOUTH FLORIDA	2★ TAMPA BAY -3 (-120) over Cleveland	P \$0
3★ STANFORD (-5) over USC	<b>Week 9 College:</b>	
2★ Arizona (+4.5) over HOUSTON	3★ Texas A&M +2.5 over MISSISSIPPI ST	L (\$330)
2★ TEXAS (-23) over Tulsa	3★ IOWA ST -3.5 over Texas Tech	W \$300
2★ California (+3.5) over BYU	2★ STANFORD -3 over Washington St	L (\$220)
<b>Week 1 NFL:</b>	2★ Iowa +6.5 over PENN ST	W \$200
3★ Pittsburgh/CLEVELAND UNDER 44	2★ ARKANSAS +1.5 over Vanderbilt	L (\$220)
2★ MINNESOTA -6 over San Francisco	<b>Week 8 NFL:</b>	
2★ MIAMI +1.5 over Tennessee	3★ Green Bay +9.5 over L.A. RAMS	W \$300
<b>Week 3 College:</b>	2★ San Francisco PK over ARIZONA	L (\$220)
3★ PURDUE +7 (-120) over Missouri	2★ Denver/KANSAS CITY UNDER 54	W \$200
3★ Georgia Southern +34 over CLEMSON	<b>Week 10 College:</b>	
2★ SYRACUSE +3.5 (-120) over Florida St	3★ Louisiana Tech +23 over MISSISSIPPI ST	L (\$330)
2★ UAB +4 over Tulane	3★ Michigan St -2.5 over MARYLAND	W \$300
2★ UL-Monroe +27 over TEXAS A&M	2★ Ohio -2 over WESTERN MICHIGAN	W \$200
<b>Week 2 NFL:</b>	2★ FLORIDA -6 over Missouri	L (\$220)
3★ PITTSBURGH -4 over Kansas City	2★ NORTHWESTERN +9.5 over Notre Dame	L (\$220)
2★ Indianapolis +6 over WASHINGTON	<b>Week 9 NFL:</b>	
2★ ATLANTA -6 over Carolina	3★ SEATTLE -1.5 over L.A. Chargers	L (\$330)
<b>Week 4 College:</b>	2★ MINNESOTA -4.5 over Detroit	W \$200
3★ Michigan St -4.5 over INDIANA	2★ Pittsburgh +3 over BALTIMORE	W \$200
3★ IOWA ST -18.5 over Akron	<b>Week 11 College:</b>	
2★ BAYLOR -7.5 over Kansas	3★ NORTHERN ILLINOIS -3.5 over Toledo	W \$300
2★ Louisiana Tech +21 over LSU	3★ Texas -1.5 over TEXAS TECH	W \$300
2★ Texas A&M +27 over ALABAMA	2★ PITTSBURGH -3 over Virginia Tech	W \$200
<b>Week 3 NFL:</b>	2★ Liberty +23.5 over VIRGINIA	W \$200
3★ SEATTLE -1.5 over Dallas	2★ TENNESSEE +6 over Kentucky	W \$200
2★ BALTIMORE -5 over Denver	<b>Week 10 NFL:</b>	
2★ CLEVELAND -3 over N.Y. Jets	3★ PHILADELPHIA -6.5 over Dallas	L (\$330)
<b>Week 5 College:</b>	2★ Seattle +10 over L.A. RAMS	W \$200
3★ FRESNO ST -7.5 over Toledo	2★ Buffalo +7.5 over N.Y. JETS	W \$200
3★ CALIFORNIA +3 (-120) over Oregon	<b>Week 12 College:</b>	
3★ BYU +17.5 over WASHINGTON	3★ MINNESOTA +2 over Northwestern	L (\$330)
2★ LSU -12 over Ole Miss	3★ Syracuse +10.5 over Notre Dame	L (\$330)
2★ Ohio St/PENN ST UNDER 72	2★ NEBRASKA +2.5 over Michigan St	W \$200
<b>Week 4 NFL:</b>	2★ OREGON -3.5 over Arizona St	L (\$220)
3★ NEW ENGLAND -7 (-105) over Miami	2★ OVER 59.5 Cincinnati/CENT. FLORIDA	L (\$220)
2★ Cincinnati +5.5 over ATLANTA	<b>Week 11 NFL:</b>	
2★ OAKLAND -2.5 over Cleveland	3★ Kansas City +3.5 over L.A. RAMS	W \$300
<b>Week 6 College:</b>	2★ Philadelphia +9 over NEW ORLEANS	L (\$220)
3★ TEXAS A&M -5.5 over Kentucky	2★ Minnesota +2.5 over CHICAGO	L (\$220)
3★ Iowa -7 over MINNESOTA	<b>Week 13 College:</b>	
2★ Northern Illinois -3 over BALL ST	3★ SMU -2 over Tulsa	L (\$330)
2★ Northwestern +11 over MICHIGAN ST	3★ Nebraska +10 over IOWA	W \$300
2★ WYOMING +3.5 over Hawaii	2★ MEMPHIS -7 over Houston	W \$200
<b>Week 5 NFL:</b>	2★ OHIO ST +4.5 over Michigan	W \$200
3★ Oakland +5.5 over L.A. CHARGERS	2★ Stanford -6.5 over UCLA	W \$200
2★ BUFFALO +3.5 over Tennessee	<b>Week 12 NFL:</b>	
2★ Arizona +4.5 over SAN FRANCISCO	3★ BUFFALO +3.5 (-120) over Jacksonville	W \$300
<b>Week 7 College:</b>	2★ CAROLINA -3.5 over Seattle	L (\$220)
3★ CALIFORNIA -7 over UCLA	2★ DENVER +3 (EV) over Pittsburgh	W \$200
3★ Duke +3 over GEORGIA TECH	<b>Week 14 College:</b>	
2★ Florida -7 over VANDERBILT	2★ Washington -5.5 over Utah	W \$200
2★ IOWA ST +6.5 over West Virginia	1★ Texas +8 over Oklahoma	L (\$110)
2★ RICE +16.5 over Uab	<b>Week 13 NFL:</b>	
<b>Week 6 NFL:</b>	3★ PITTSBURGH -3.5 over L.A. Chargers	L (\$330)
3★ TENNESSEE +3 (-120) over Baltimore	2★ DALLAS +7.5 over New Orleans	W \$200
2★ Indianapolis +2.5 over N.Y. JETS	2★ ATLANTA -1 over Baltimore	L (\$220)
2★ Pittsburgh +2.5 over CINCINNATI	<b>Week 14 NFL:</b>	
<b>Week 8 College:</b>	3★ Indianapolis +4.5 over HOUSTON	W \$300
3★ ARKANSAS -7 over Tulsa	2★ Carolina -1.5 over CLEVELAND	L (\$220)

2★ GREEN BAY -5.5 over Atlanta	W \$200
<b>Week 15 NFL:</b>	
3★ INDIANAPOLIS -3 (EV) over Dallas	W \$300
2★ MINNESOTA -7 over Miami	W \$200
2★ Tennessee +2.5 (EV) over N.Y. GIANTS	W \$200
<b>Week 16 NFL:</b>	
3★ SEATTLE +2.5 over Kansas City	W \$300
2★ Minnesota -5.5 over DETROIT	W \$200
2★ MIAMI -4 over Jacksonville	L (\$220)
<b>Week 17 NFL:</b>	
3★ BUFFALO -3.5 over Miami	W \$300
2★ GREEN BAY -8 over Detroit	L (\$220)
1★ Indianapolis -3 over TENNESSEE	W \$100
<b>Bowls and College Football Playoffs:</b>	
1★ North Texas (+8) over Utah St	L (\$110)
1★ UL-Lafayette (+3.5) over Tulane	L (\$110)
1★ Fresno St (-4.5) over Arizona St	W \$100
1★ Eastern Mich (+2.5) over Georgia Southern	W \$100
2★ Middle Tenn (+7) over Appalachian St	L (\$220)
2★ Uab (-2.5) over Northern Illinois	W \$200
1★ San Diego St (+3) over Ohio	L (\$110)
1★ Marshall/SOUTH FLORIDA UNDER 55.5	L (\$110)
2★ Florida International (+5.5) over Toledo	W \$200
1★ Western Michigan (+12) over BYU	L (\$110)
1★ Wake Forest (+4.5) over Memphis	W \$100
1★ Army (-3) over Houston	W \$100
3★ Troy (+3) over Buffalo	W \$300
1★ Louisiana Tech/HAWAII OVER 60	L (\$110)
1★ Boston Coll/Boise St UNDER 56	Cancelled
2★ Georgia Tech (+4.5) over Minnesota	L (\$220)
1★ Tcu/California OVER 39.5	L (\$110)
2★ Duke (+4.5) over Temple	W \$200
1★ Wisconsin (+3.5) over Miami, FL	W \$100
1★ Baylor (+4.5) over Vanderbilt	W \$100
1★ Purdue/Auburn OVER 55	W \$100
3★ Syracuse (+1.5) over West Virginia	W \$300
2★ Iowa St (+3.5) over Washington St	W \$200
2★ Nevada (+2) over Arkansas St	W \$200
2★ Florida (+7.5) over Michigan	W \$200
1★ South Carolina (-5) over Virginia	L (\$110)
1★ Alabama (-14) over Oklahoma	L (\$110)
1★ Notre Dame (+13.5) over Clemson	L (\$110)
2★ Va Tech (+5.5) over Cincinnati	W \$200
1★ Stanford (-5.5) over Pittsburgh	L (\$110)
2★ Michigan St (+2.5) over Oregon	W \$200
1★ Missouri/Oklahoma ST UNDER 74.5	W \$100
1★ Northwestern (+7) over Utah	W \$100
2★ Texas A&M (-7) over NC State	W \$200
1★ Iowa (+7) over Mississippi St	W \$100
1★ Penn St (-6.5) over Kentucky	L (\$110)
1★ LSU (-7) over Central Florida	W \$100
4★ Ohio St (-6.5) over Washington	L (\$440)
2★ Texas (+13) over Georgia	W \$200
1★ Clemson/Alabama OVER 59.5	W \$100
<b>NFL Playoffs:</b>	
1★ Indianapolis (+1.5) over HOUSTON	W \$100
1★ Seattle (-1.5) over DALLAS	L (\$110)
1★ L.A. Chargers (+2.5) over BALTIMORE	W \$100
1★ CHICAGO (-5.5) over Philadelphia	L (\$110)
2★ Indianapolis (+5.5) over KANSAS CITY	L (\$220)
1★ L.A. RAMS (-7) over Dallas	W \$100
2★ NEW ENGLAND (-4) over L.A. Chargers	W \$200
1★ NEW ORLEANS (-8) over Philadelphia	L (\$110)
1★ NEW ORLEANS (-3.5) over L.A. RAMS	L (\$110)
1★ KANSAS CITY (-3) over New England	L (\$110)
1★ New England/L.A. Rams UNDER 56.5	W \$100

# POWERS' PICKS

- Best winning % of all newsletters last 4 years in CFB/NFL combined!
- 146-96-4 (60%) record on every single NFL pick last 4 years!!!
- Emailed every Wednesday at Noon EST/9am PST during regular season
- Emailed monthly during the off-season
- Write-ups on every single CFB/NFL game played each week
- News and Notes
- Bad Beats
- Misleading Finals
- Major Injuries
- Weekly CFB Power Ratings on all 130 teams
- Full-season CFB and NFL Schedule Logs for every single team
- Computer Projected Lines for Every CFB Game
- Top CFB ATS Trends
- Pictures of actual bets made by Brad Powers during the week!

# POWERS' PICKS #1 Newsletter Last 4 Years!!

## 2015-18 Combined Nationwide Football Newsletter Contest (Regular Season Only)

We are happy to provide you with the records, standings and plays used from the Power Sweep (3★, 4★ & Underdog), Gold Sheet (Key Releases), Power Plays (4.5★), Sports Reporter (Best & Super Bets), Winning Points (Best Bets & Preferred), Playbook (3-5★'s), Pointwise (Ratings 1-4) and Powers' Picks (1-4★'s)

College		NFL		College/NFL Combined	
Newsletter	W L T % Net	Newsletter	W L T % Net	Newsletter	W L T % Net
Powers' Picks	144 123 4 53.93% 21	Powers' Picks	119 79 4 60.10% 40	Powers' Picks	263 202 8 56.56% 61
Sports Reporter	106 92 7 53.54% 14	Power Sweep	72 59 4 54.96% 13	Sports Reporter	179 152 10 54.08% 27
Power Sweep	109 98 4 52.66% 11	Sports Reporter	73 60 3 54.89% 13	Power Sweep	181 157 8 53.55% 24
Playbook	77 73 8 51.33% 4	Gold Sheet	102 94 8 52.04% 8	Winning Points	294 288 15 50.52% 6
Pointwise	158 151 10 51.13% 7	Winning Points	133 132 7 50.19% 1	Pointwise	254 253 18 50.10% 1
Winning Points	161 156 8 50.79% 5	Pointwise	96 102 8 48.48% -6	Playbook	173 177 12 49.43% -4
Power Plays	89 93 10 48.90% -4	Playbook	96 104 4 48.00% -8	Gold Sheet	200 205 13 49.38% -5
Gold Sheet	98 111 5 46.89% -13	Power Plays	34 39 0 46.58% -5	Power Plays	123 132 10 48.24% -9
Combined	942 897 56 51.22% 45	Combined	725 669 38 52.01% 56	Combined	1667 1566 94 51.56% 101

# Powers' Picks Newsletter: (28 Email Issues) Just \$99

Have questions? Need more info? Want to sign up?  
**Call 1-702-419-0473**  
 or order online at [bradpowerssports.com](http://bradpowerssports.com)

You can also send a check payable to:  
**BP Sports, LLC**  
 2764 N. Green Valley Pkwy #103  
 Henderson, NV 89014