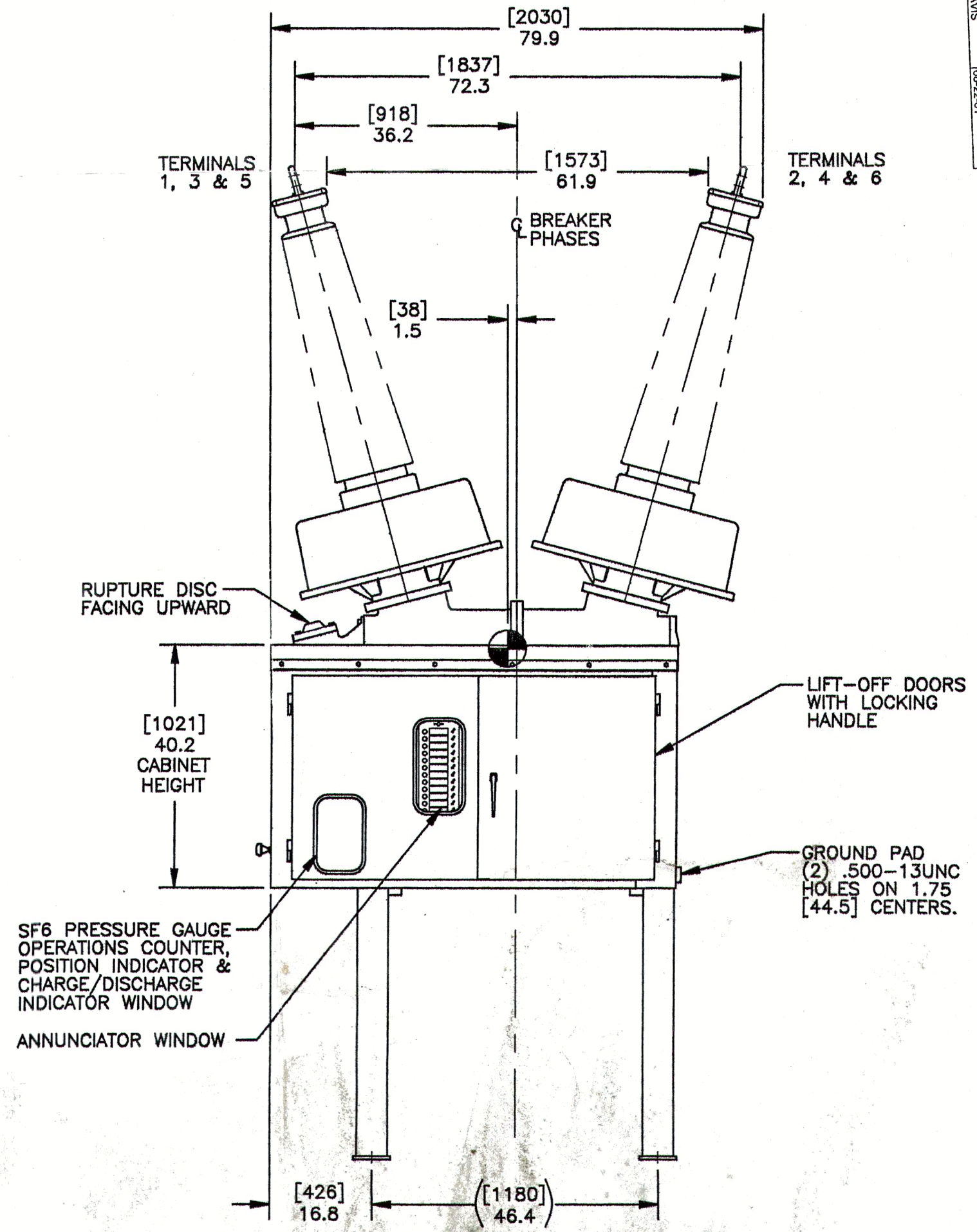
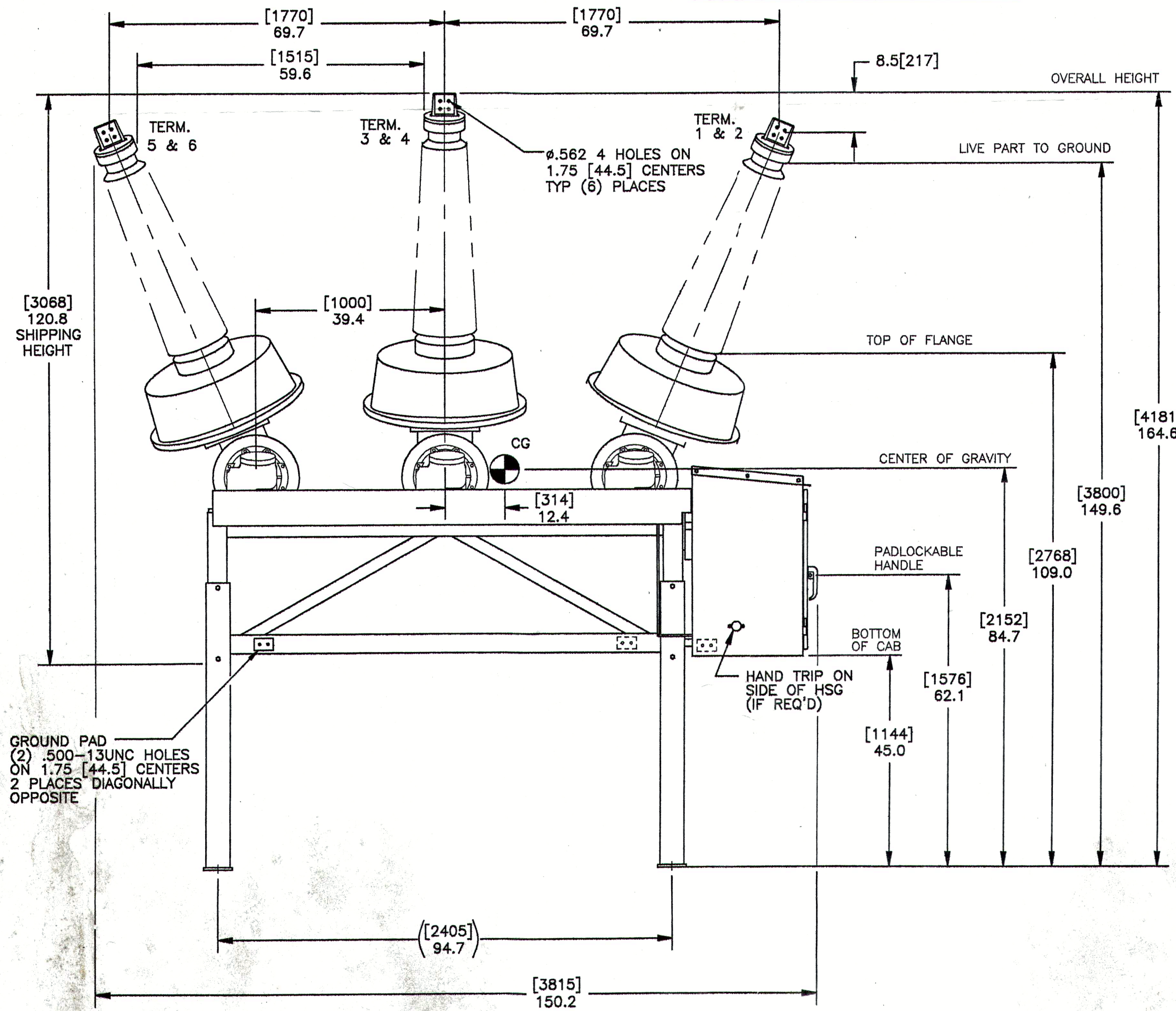
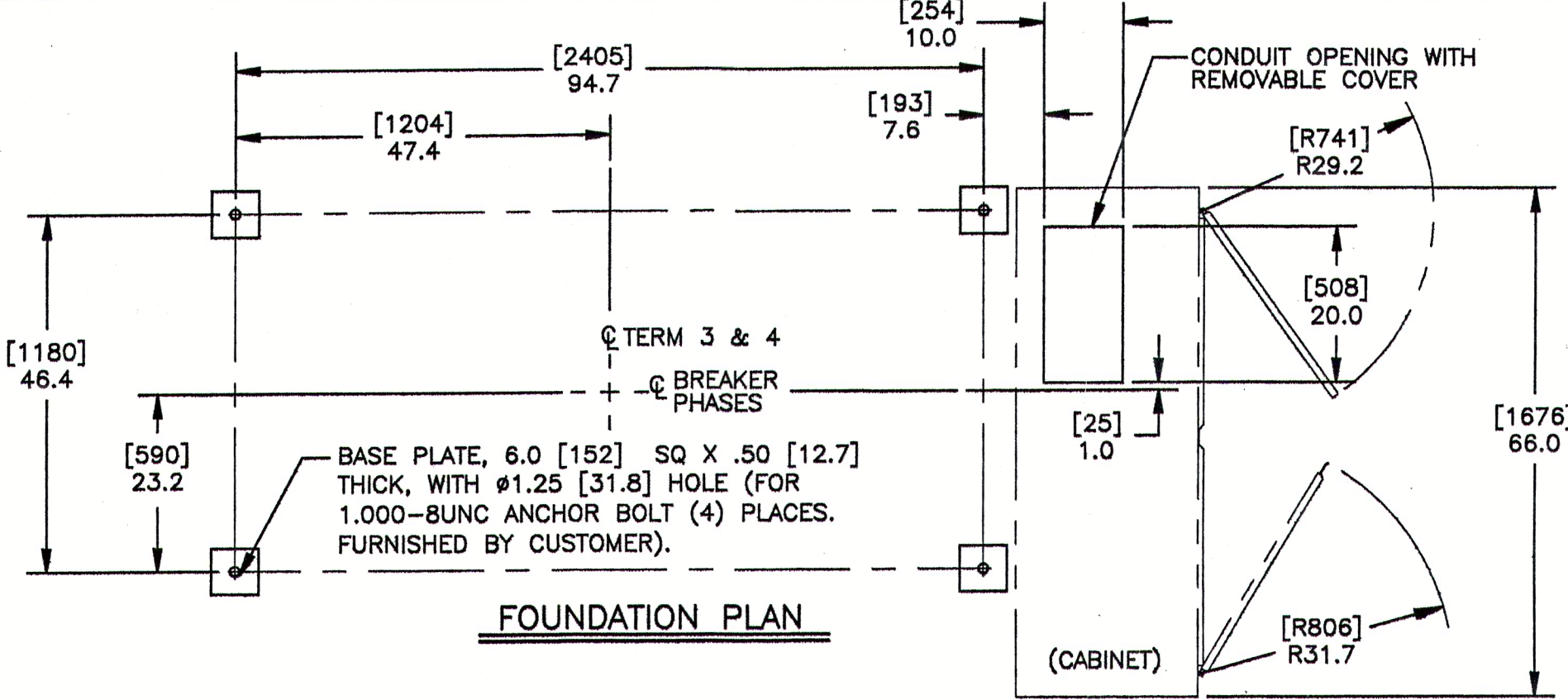


CERTIFIED PRINT
 Customer: VIRGINIA POWER
 Project: SPS2-145-40-300
 Drawing: 72-380-730-428
 Date: 05-22-01
 Bill Davis

NOTE:
 1. METRIC DIMENSIONS [XX.X] IN MILLIMETERS.
 2. REPRESENTS BREAKER CENTER OF GRAVITY.

APPROX WEIGHTS:
 BREAKER COMPLETE 7200 LB [3266 KG]
 SF6 58 LB [26 KG]
 FOUNDATION REACTION NEGLIGIBLE



UNLESS OTHERWISE SPECIFIED		-Confidential-		Property of	
ALL DIMENSIONS ARE IN INCHES		Siemens Power Transmission & Distribution LLC			
1-PLACE DECIMAL \pm .050	MACHINED SURFACE TEXTURE	DWG NAME			
2-PLACE DECIMAL \pm .020	UNLESS OTHERWISE SPECIFIED	OUTLINE SPS2			
3-PLACE DECIMAL \pm .005	INTERNAL DIA EXCLUDED	SCALE 1:20 WT R F SHEET 1 OF 1			
FOR TOL NOT SPECIFIED SEE 500 SERIES SHOP DRAW STD	THIRD ANGLE PROJ	ISSUE			
72-380-730-408		72-380-730-428 01			
DRAWN RC DATE 5-5-99	C FSCM NO.	DWG NO.			
CHECK RC DATE 5-5-99					
APVD BED DATE 5-10-99					

72-380-730-428 01

MAY 19 1999