

ROAD MARKING PAINTS

Slip Resistant Colour Demarcation

Paving the Way to
a Sustainable
Future



**AJ Surfacing
Contractors Ltd**

Registered Address: - Suite 1 ,
Burns House 19 Town Range
Gibraltar

Phone: (+350) 58009819

E-mail Address:

management@ajsurfacing.com



**LOOK OUT
FOR
OUR**



CLEARLINE PLUS

Chlorinated Rubber Road Marking Paint



Description

An improved formulation of a versatile and cost-effective solvent-based line marking paint optimised for application by spray machinery. Based on chlorinated rubber resin, Clearline Plus is durable and can be made reflective by applying Retrolux glass beads onto the wet surface.

Uses

Clearline Plus is designed for line marking on roads, aircraft runways, car parks, factory floors, school playgrounds and for indoor and outdoor sports surfaces.

Benefits

- Improved formulation
- Full bodied
- High opacity (hiding power)
- Fast drying
- Durable
- Cost-effective
- Easy to apply by spray, roller or brush
- Can be reflectorised with Retrolux glass beads
- Good adhesion to most surfaces
- Range of 6 bright colours



ADBRUF 

Adbruf Ltd, Gibbs Marsh Trading Estate, Stalbridge, Dorset, DT10 2RX, UK

Tel: + 44 (0)1963 362640

Email: sales@adbruf.com

Web: www.adbruf.com

CLEARLINE SPE

Single Pack Epoxy Road Marking Paint



Description

A versatile, hard wearing and cost-effective line marking paint optimised for application by spray machinery. Using epoxy technology, Clearline SPE is durable and can be made reflective by applying Adbruf Retrolux glass beads onto the wet surface.

Uses

Clearline SPE is formulated as a durable line marking paint for use on roads, aircraft runways, car parks, factory floors, school playgrounds and for indoor and outdoor sports surfaces. It is optimised for application using airless spray equipment but can also be applied by brush or roller.

Benefits

- Fast drying
- Durable
- Resistant to Chemical attack
- Cost-effective
- Easy to apply by spray, roller or brush
- Can be reflectorised with Retrolux glass beads
- Good adhesion to most surfaces
- Range of bright colours



ADBRUF 

Adbruf Ltd, Gibbs Marsh Trading Estate, Stalbridge, Dorset, DT10 2RX, UK

Tel: + 44 (0)1963 362640

Email: sales@adbruf.com

Web: www.adbruf.com

PRODUCT INFORMATION

CLEARLINE PLUS

Chlorinated Rubber Road Marking Paint

Description

An improved formulation of a versatile and cost-effective solvent-based line marking paint optimised for application by spray machinery. Based on chlorinated rubber resin, Clearline Plus is durable and can be made reflective by applying Retrolux glass beads onto the wet surface.

Uses

Clearline Plus is designed for line marking on roads, aircraft runways, car parks, factory floors, school playgrounds and for indoor and outdoor sports surfaces.

Benefits

- Improved formulation
- Full bodied
- High opacity (hiding power)
- Fast drying
- Durable
- Cost-effective
- Easy to apply by spray, roller or brush
- Can be reflectorised with Retrolux glass beads
- Good adhesion to most surfaces
- Range of 6 bright colours

Technical	
Coverage Approx.	2.85m ² per litre @ 350 microns wet film thickness
Specific Gravity (SG)	1.49 @ 20°C
Flash Point	12°C

Colours

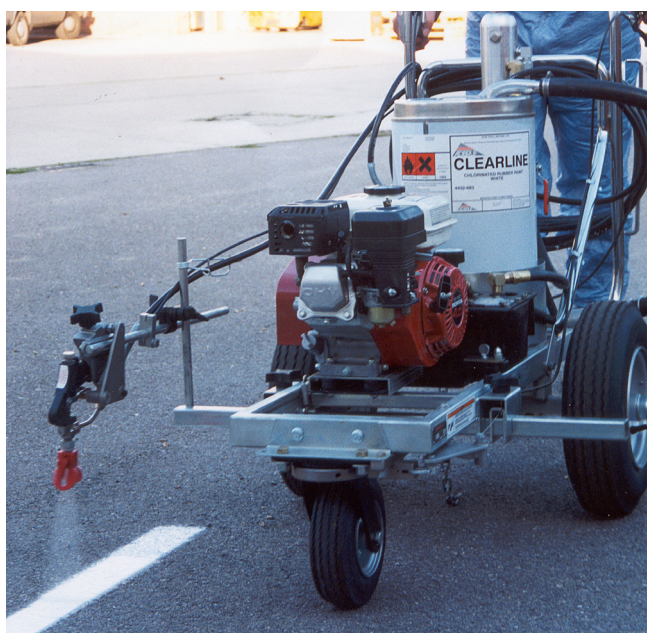
A full range of colours is available.

White
Yellow
Red
Blue
Green
Black

Colour bars are approximate only. It is recommended that samples are requested to ensure that Clearline Plus meets specific colour requirements.

Surface Preparation

Surfaces must be clean, dry and free from any contamination, including dirt, oil, grease, laitance and curing agents. It is recommended that a small trial is carried out before full application.



Product Application

Clearline Plus is suitable for application by airless spray, conventional spray machines (PL 4900), roller or brush. Stir before use. One coat should be sufficient under normal conditions, depending on the texture of the surface. If reflectorisation is needed, apply Retrolux glass beads to the surface of the wet line immediately after application. Equipment can be cleaned using Adbruf's proprietary Cleaning Solvent.

Aftercare

Cleaning is not normally necessary but Clearline Plus can be cleaned by using a detergent and clean water and a yard brush, rinsing with clean water afterwards.

Packaging and Storage

Clearline Plus White or Yellow is supplied in either 5 litre tins and 20 litre drums. All other colours are supplied in 5 litre tins.

Store in a cool, dry, well-ventilated place. Shelf life is 12 months under normal conditions.

Health and Safety

Clearline Plus is a flammable petroleum mixture and should only be used in areas with good ventilation. Keep away from sources of ignition. No smoking. See separate Safety Data Sheet.

Published July 2013

ADBRUF

Adbruf Ltd. Gibbs Marsh Trading Estate,
Stalbridge, Dorset DT10 2RX United Kingdom
Tel: +44 (0)1963 362640 **Fax:** +44 (0)1963 363762
Email: sales@adbruf.com **www.adbruf.com**

CLEARLINE SPE

Single Pack Epoxy Road Marking Paint

Description

A versatile, hard wearing and cost-effective line marking paint optimised for application by spray machinery. Using epoxy technology, Clearline SPE is durable and can be made reflective by applying Adbruf Retrolux glass beads onto the wet surface.

Uses

Clearline SPE is formulated as a durable line marking paint for use on roads, aircraft runways, car parks, factory floors, school playgrounds and for indoor and outdoor sports surfaces. It is optimised for application using airless spray equipment but can also be applied by brush or roller.

Benefits

- Fast drying
- Durable
- Resistant to Chemical attack
- Cost-effective
- Easy to apply by spray, roller or brush
- Can be reflectorised with Retrolux glass beads
- Good adhesion to most surfaces
- Range of bright colours

Technical	
Coverage Approx.	Approx. 2.86m ² per litre @ 350 microns wet film thickness
Specific Gravity (SG)	1.4-1.5 @ 20°C depending on colour
Flash Point	12°C

Colours

A full range of colours is available.

White
Yellow
Red
Blue
Green
Black

Colour bars are approximate only. It is recommended that samples are requested to ensure that Clearline SPE meets specific colour requirements.

Surface Preparation

Surfaces must be clean, dry and free from any contamination, including dirt, oil, grease, laitance and



curing agents. It is recommended that a small trial is carried out before full application.

Product Application

Clearline SPE is suitable for application by airless spray machines (eg Titan PowrLiner 4900), roller or brush. Stir before use. One coat should be sufficient under normal conditions, depending on the texture of the surface. If reflectorisation is needed, apply Retrolux glass beads to the surface of the wet line immediately after application.

Equipment can be cleaned using Adbruf Cleaning Solvent.

Aftercare

Cleaning is not normally necessary but Clearline SPE can be cleaned by using a detergent and clean water and a yard brush, rinsing with clean water afterwards.

Packaging and Storage

Clearline SPE is supplied in 20 litre drums. Store in a cool, dry, well-ventilated place. Shelf life is 12 months under normal conditions.

Health and Safety

Clearline SPE is a flammable petroleum mixture and should only be used in areas with good ventilation. Keep away from sources of ignition. No smoking. See separate Safety Data Sheet.

Published June 2012

COLOURPLUS

Slip Resistant Coloured Coating

Description

Colourplus is a single pack high build surface coating incorporating a UV stable modified acrylic resin. The material has been specifically designed to provide a versatile coloured demarcation system for use in lightly to moderately trafficked areas such as cycleways, school safe routes, pedestrian walkways, ramps, car parks, factory gangways, central reservations, designated areas in retail parks and many other areas requiring colour demarcation in combination with effective friction for vehicular and underfoot safety.

Uses

Roads, carparks, cycleways, walkways, driveways, central reservations, airports, docks, factories, parks, playgrounds, footbridges.

Benefits

- Instant brightly coloured surfaces
- High level of friction to reduce skid/slip
- High opacity
- Excellent adhesion to most surfaces
- Full range of vivid UV stable colours
- Easy to apply
- Fast drying
- Spray, roller, squeegee or brush application
- Resistant to petrol or diesel spillage
- Low cost
- Lead Free



Technical	
Specific Gravity	1.35
Flash Point (closed cup)	+5 °C
Spread Rate (Roller)	20-40m ² /25kg
Spread Rate (Spray)	30-50m ² /25kg
Tack Free @ 20°C	20 mins
Open to Traffic	2 hours
Skid Resistance Value (SRV)	≥ 55

* Dependent upon texture and porosity of surface.
Colourplus, whilst imparting its own good friction properties, has little detrimental effect on any existing SRV's when applied to textured surfaces at the recommended film thickness.

Colours

Colour	BS 381C Ref.	RAL	PMS
Bold Red	564	3020	186
Venetian Red	445	3009	180
Lemon Yellow	355	1023	116
Yellow Green	NA	6018	361
Deep Chrome Green	267	6002	350
Emerald Green	NA	NA	NA
Strong Blue	107	5015	2945
Fawn	NA	NA	727
Dark Admiralty Grey	632		430
Graphite Black		9011	Black
Traffic White		9016	White

Colour references are approximate. Please ask us for actual colour swatches before ordering. Special colours are available on request subject to a minimum order quantity and a formulation charge.

Surface Preparation

Please see detailed Colourplus Method Statement.

Product Application

Please see detailed Colourplus Method Statement.

Aftercare

Once in service, Colourplus can be cleaned by using a detergent solution and a yard brush, rinsing with clean water afterwards.

PRODUCT INFORMATION - COLOURPLUS

Packaging & Storage

Colourplus is supplied in 25Kg drums. Store under cover in dry, well ventilated conditions. To ensure optimum application properties, Colourplus should be stored at room temperature prior to use. Shelf life is normally 12 months.

Health & Safety

Colourplus is a flammable petroleum mixture and should only be used in areas with good ventilation.
Keep away from sources of ignition.
No smoking.
Observe Petroleum regulations.
See separate Safety Data Sheet.

Revised July 2013



COLOURPLUS

Coloured Slip Resistant UV Stable Paint



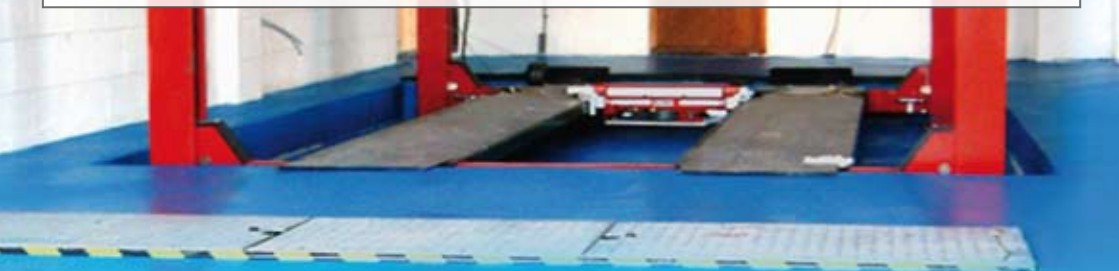
ADBRUF 

Colourplus - Slip & Skid Resistant, Brightly Coloured, Cost-Effective Paint

Colourplus is a solvent-based coloured road surface coating incorporating a UV stable modified acrylic resin and selected fine high psv aggregates. Colourplus has been specially formulated for use in areas requiring colour demarcation in combination with effective friction for vehicular and underfoot safety.

Colourplus is resistant to fuel spillage and is lead free. It can be applied by spray, roller, brush or squeegee.

Colourplus is used by many major retail stores and shopping centres for marking designated areas in car parks such as disabled or parent and child parking areas.



Areas of Use

- Roads
- Car parks
- Cycle ways
- Walkways
- Central reservations
- Airports
- Docks
- Factories
- Parks
- Playgrounds
- Footbridges
- Schools

Features and Benefits

- Instant brightly coloured surfaces
- High level of friction to reduce skid/slip
- High opacity
- Excellent adhesion to most surfaces
- Full range of vivid UV stable colours
- Easy to apply
- Fast drying
- Spray, roller, squeegee or brush application
- Resistant to petrol or diesel spillage
- Low cost



These are a few examples of the colours that are available from Adbruf - contact us for more information. Please be aware that our colour range is continually updated - visit our website for more information.



Signal Blue



Sky Blue



Traffic White



Graphite Black



Dark Admiralty Grey



Lemon Yellow



Yellow Green



Deep Chrome Green



Emerald Green



Bold Red



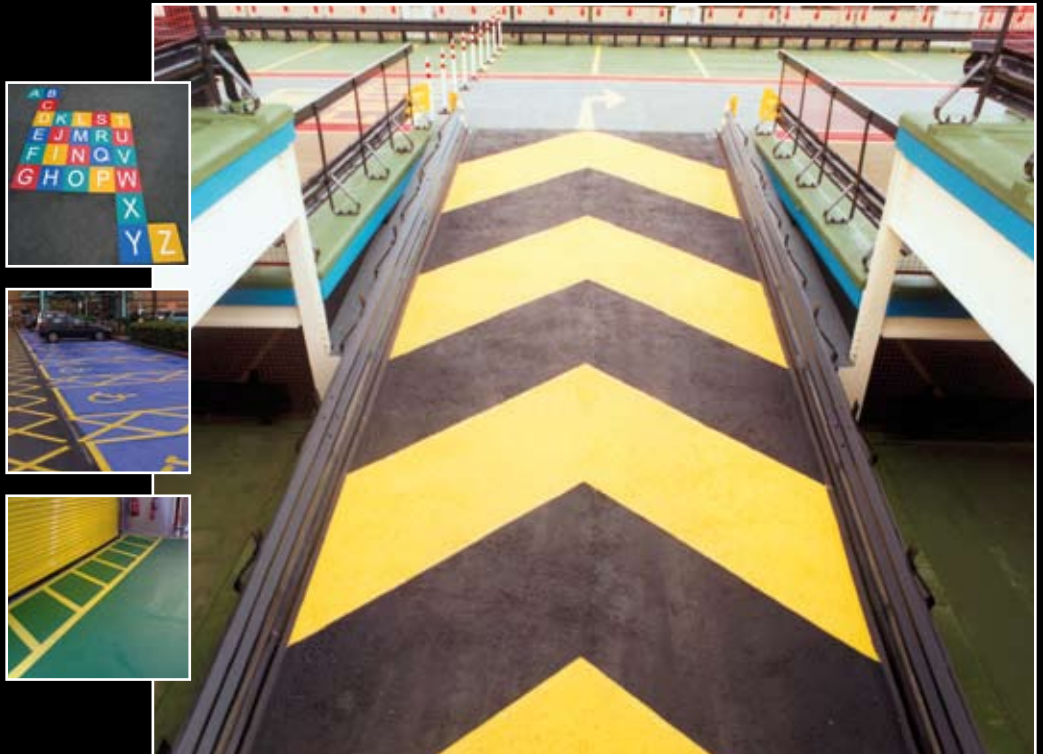
Strong Blue

What to do next.....

Visit www.adbruf.com to download detailed product information and an easy to use method statement.

To find out more about our full range, call us or visit our website where you can view our full product catalogue and obtain further information on all of our products.

Call or email us now to discuss your requirements in detail.



Adbruf Ltd, Gibbs Marsh Trading Estate, Stalbridge, Dorset, DT10 2RX, UK

Tel: + 44 (0)1963 362640

Email: sales@adbruf.com

Web: www.adbruf.com

DIAMOND DF2 FINE

Super-Durable Weather & Slip Resistant Coloured Coating

Description

Diamond DF2 Fine is a two component (2K), 100% solids, sprayable, aliphatic polyaspartic polyurea. It exhibits class leading durability, colour retention and UV stability. The use of polyaspartic technology has resulted in an odourless, solvent-free system which is easy to apply and produces a coating with outstanding physical and mechanical properties. The nature of the polymers used in Diamond DF2 Fine also imparts weathering properties vastly superior to those of conventional 2K polyurethane or epoxy systems which means that Diamond DF2 Fine performs at very thin film thicknesses.

Uses

Diamond DF2 Fine is a highly durable anti-slip system which provides long- lasting colour demarcation and prolongs the effective life of the existing surface in highly trafficked areas. Diamond DF2 Fine is optimised for area marking or for producing linear markings to designate walkways, bays and off-limits areas.

Diamond DF2 Fine is suitable for use on asphalt, exterior concrete and on properly prepared metal. Diamond DF2 Fine can also be used on interior concrete, provided that the substrate has been prepared properly. It can be applied at thicknesses of 75-200um in a single pass or multiple passes on vertical surfaces.

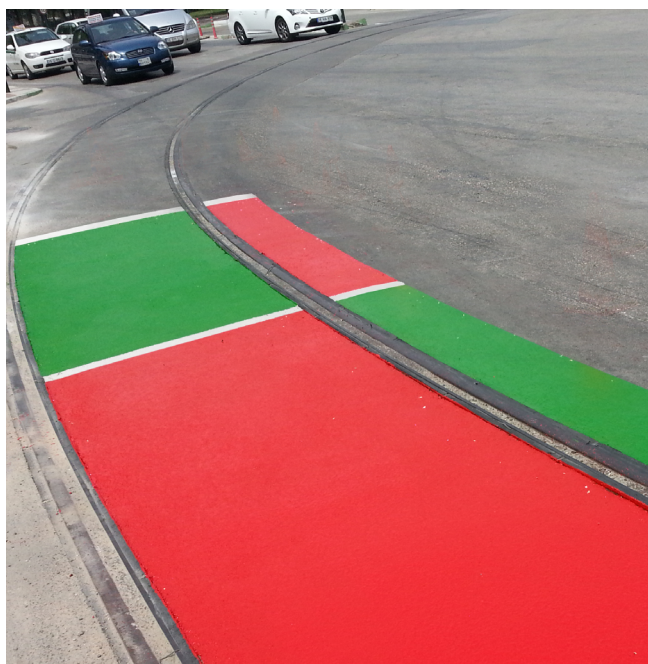
Anti-skid properties can be introduced to the system by back-rolling selected aggregates/anti-skid material while the coating is still tacky.

This gives the end user a wide variety of options. Diamond DF2 Fine contains no volatile organic compounds (VOCs) meaning that it can be used in sensitive areas where foods and other susceptible products are stored without the risk of contamination or taint.

Typical areas of use include warehouses, distribution centres, factories, retail and industrial parks, car parks, hospitals and defence sites, airports, ports, roads, highways, footways, cycleways, play areas and many more.

Benefits

- No volatile organic compounds (VOCs) – solvent free.
- No odour.
- Available in a range of bright, UV stable colours.
- UV stable - colour will not fade and gloss will not be lost.
- Excellent weathering properties.
- Extremely hard wearing.
- Slip/skid resistant.
- Fuel, oil and solvent resistant.
- Stain resistant.
- Easy to apply.



- Choice of application methods: spray, roller or brush.
- Fast drying to a hard, gloss finish.
- Excellent adhesion to a wide variety of substrates.
- Excellent opacity.
- Excellent overcoating properties.

Technical

General

Specific Gravity of mixed system (using SG Cup)	1.45 - 1.65 depending on colour
Solids volume	100%
Volatile organic content	zero
Mix ratio (Base:Activator)	3:1
Recommended wet/dry thickness	75-200µm per coat
Application rate @ 189 µm film thickness and a substrate texture depth of 0.66 - 0.80 mm	35-40 m ² per 10 kg pack

Gel time	40 - 50 mins
Touch dry time @ 20°C (approximate)	70 minutes
To recoat (minimum)	2 hours
To recoat (maximum)	6 hours
Open to foot traffic (approximate)	4 hours
Open to moderate/heavy traffic (approximate)	9 hours
To achieve full cure	15 hours

- Note that drying time is dependent on humidity, temperature and the thickness of the applied coating.
- Minimum recoat time will be reached when the film is not deformed by firm thumb pressure and no coating is visible on thumb.
- Maximum recoat time is identified when the thumb nail test no longer makes an indentation.
- If the maximum recoat time is exceeded then the surface should be lightly abraded before applying an additional coat. Consult Adbruf for further information on minimum and maximum recoat times of Diamond DF2 Fine.
- The performance of the coating will be affected by film builds above or below the recommended film thickness or spread rate.

Physical properties (using Diamond DF2 Fine White)

Tensile Strength & Elongation measurements carried out to ASTM Std No D882. Test samples were prepared using ASTM Std No D6287-09. All measurements were carried out using the Elcometer 106/6 Adhesion Tester.

	Days after application		
	2	5	7
Shore A Hardness	90	95	95
Tensile Strength	5.0N/mm ²	12.1N/mm ²	12.5N/mm ²
Elongation	183%	50%	29%

Pull-off adhesion tests carried out to ASTM D4541/ISO 4624.

Adhesion to concrete (unprimed/exterior)*	3.3 N/mm ²
Adhesion to asphalt*	1.75 N/mm ²
Adhesion to steel*	>3.50 N/mm ²

*In all cases, the substrate failed, not the coating.

Colours

All colours are Adbruf specific. References to standards are given on the basis of the closest available and are approximate only. Where colour matching is of high importance, please contact us in advance. Diamond DF2 Fine colour swatches are available upon request.

Colour	APPROXIMATE COLOUR REFERENCES		
	BS 381C Ref.	RAL	PMS
Bold Red	564	3020	186
Venetian Red	445	3009	180
Lemon Yellow	355	1023	116
Emerald Green	228	6024	347
Deep Chrome Green	267	6002	350
Strong Blue	107	5015	2945
Graphite Black	642	9011	
White	N/A	9016	White
Mid Grey		7040	

Other colours can be formulated to meet specific requirements. If you require corporate colours or need to match a specific colour, please contact us to discuss your needs. A formulation charge and a minimum order quantity will apply.

Application

The separate detailed Method Statement must be followed.

Aftercare

There are no aftercare requirements other than cleaning. Diamond DF2 can be cleaned by pressure washing or by washing with a conventional detergent solution and a yard brush, rinsing with clean water afterwards.

Packaging & Storage

Diamond DF2 Fine is supplied in two component packs. The components for each pack are supplied in the correct proportions, ie Part A Base 3:1 Part B Activator by weight.

Store in dry, ventilated conditions. Shelf life is normally 12 months if these conditions are met.

Health & Safety

See separate Material Safety Data Sheet for details.

DIAMOND DF2

Super-Durable Weather & Slip Resistant Coloured Coating

Description

Diamond DF2 is a two component (2K) polyurethane coating which incorporates cutting edge polyaspartic technology to provide class leading durability, UV stability and slip resistance. The use of polyaspartic technology has resulted in an odourless, solvent-free system which is not only easy to apply, but produces a coating which also dries and hardens rapidly to offer excellent slip and skid resistance. The nature of the polymers used in Diamond DF2 also imparts weathering properties vastly superior to those of conventional 2K polyurethane or epoxy systems which means that Diamond DF2 performs at very thin film thicknesses.

Uses

Diamond DF2 is a highly durable anti-slip system which provides long-lasting colour demarcation and prolongs the effective life of the existing surface in highly trafficked areas. Diamond DF2 is optimised for area marking or for producing linear markings to designate walkways, bays and off-limits areas.

Diamond DF2 is suitable for use on all types of asphalt and concrete and can be used both outdoors and indoors. This gives the end user a wide variety of options. Diamond DF2 contains no volatile organic compounds (VOCs) meaning that it can be used in sensitive areas where foods and other susceptible products are stored without the risk of contamination or taint.

Typical areas of use include warehouses, distribution centres, factories, retail and industrial parks, car parks, hospitals and defence sites, airports, ports, roads, highways, footways, cycleways, play areas and many more.

Benefits

- No volatile organic compounds (VOCs) – solvent free.
- No odour.
- Available in a range of bright, UV stable colours.
- UV stable - colour will not fade and gloss will not be lost.
- Excellent weathering properties.
- Extremely hard wearing.
- Slip/skid resistant.
- Fuel, oil and solvent resistant.
- Stain resistant.
- Easy to apply.
- Application by roller or brush.
- Fast drying to a hard, gloss finish.
- Excellent adhesion to a wide variety of substrates.
- Excellent opacity.
- An alternative sprayable formulation is available - Diamond DF2 Fine.



Technical

Specific Gravity of mixed system (using SG Cup)	1.45 - 1.70 depending on colour
Pot Life @ 20°C (approximate)	40-50 minutes
Recommended Wet Film Thickness	150-250µm
Application rate	24-46 m ² per 10 kg pack at the recommended wet film thickness per coat if all the material can be applied (i.e. zero wastage)
Touch dry time @ 20°C (approximate)	< 1 hour
Curing time @ 20°C (approximate)	3 hours
Open to foot traffic (approximate)	4 hours
Open to moderate/heavy traffic (approximate)	8 hours
Skid Resistance (SRV)	55+
Tensile Strength @ 20°C	14.1N/mm ²
Elongation @ 20°C	38%

Colours

All colours are Adbruf specific. References to standards are given on the basis of the closest available and are approximate only. Where colour matching is of high importance, please contact us in advance.

APPROXIMATE COLOUR REFERENCES			
Colour	BS 381C Ref.	RAL	PMS
Bold Red	564	3020	186
Venetian Red	445	3009	180
Lemon Yellow	355	1023	116
Emerald Green	228	6024	347
Deep Chrome Green	267	6002	350
Strong Blue	107	5015	2945
Graphite Black	642	9011	Black
White	N/A	9016	White

Other colours can be formulated to meet specific requirements. If you require corporate colours or need to match a specific colour, please contact us to discuss your needs. A formulation charge and a minimum order quantity will apply.

Diamond DF2 colour swatches are available upon request.

Application

See separate detailed Method Statement.

The substrate must be sound, clean and dry and suitable for coating.

The two liquid components are blended on site to instigate the cure process. Once blended, the material is applied sparingly to the substrate by the use of a paint scuttle and roller or by brush and then given time to cure.

Aftercare

There are no aftercare requirements other than cleaning.

Diamond DF2 can be cleaned by pressure washing or by washing with a conventional detergent solution and a yard brush, rinsing with clean water afterwards.

Packaging & Storage –

Diamond DF2 is supplied as a 10 kg pack made up of the following components:

Base	Pail	8.47kg
Hardener	Jerrican	1.53kg

Store in dry, ventilated conditions. Shelf life is normally 12 months if stored in accordance with the manufacturer's instructions.

Health & Safety –

See separate Material Safety Data Sheet for details.

PRODUCT INFORMATION

HYCOLOUR 193

Extra Durable Slip Resistant Coloured Coating

Description

Hycolour 193 has been specifically designed, using unique acrylic urethane hybrid technology, as a highly durable colour demarcation system, with a level of slip/skid resistance suitable for many vehicular and pedestrian requirements.



Uses

Hycolour 193's highly durable anti-slip system provides long-lasting colour demarcation and can prolong the effective life of the existing surface in highly trafficked areas.

Hycolour 193 has been optimised for use on concrete substrate. Results where applied to asphalt are variable due to the types of asphalt encountered and their thermoplastic properties which can cause the Hycolour 193 to crack.

Areas of suggested use include: highways, multi-storey and outdoor car parks, central reservations, cycleways, designated areas in retail parks, airports, docking ramps, boat walkways, driveways, factories, factory gangways, steps, footbridges, parks, pedestrian areas, playgrounds ramps, road junctions, roads, school safe routes.

Benefits

- A range of bright UV stable colours
- High level of friction to reduce skid/slip
- High opacity
- Highly durable
- More durable than many acrylic epoxies
- Excellent adhesion
- Easy to apply
- Fast drying
- Choice of application methods
spray, roller or brush
- Fuel resistant

Technical

Specific Gravity (blue)	1480 kg/m ³
Application Rate (See below)	1.6 ± 0.4m ² /kg Approx
Skid Resistance (SRV)	45 - 70*

*Using back rollered aggregate.

To determine the correct coverage of Hycolour 193 please carefully consider the following:

- Porosity of existing surface
(Will the material be absorbed into the surface?)
- Rugosity of existing surface
(Will the material flow into dips and holes?)
- Required to cover existing markings?
(A slightly higher coating thickness may be required, depending on the colour chosen)
- Method of application
(The use of spray equipment will generally give the greatest coverage per litre).
- Anticipated wear on area

It is advisable to apply Hycolour 193 onto a representative trial area, so that accurate spread rates and material usage figures may be obtained prior to full-scale use.

Relative Wear Characteristics

Samples have been tested and classified according to their wear relative to water-based road paint:

Product Wear	
Water Based Road Paint	1.00
Chlorinated Rubber Based Road Paint	0.79
Single Component Acrylic Coating	0.51
Hycolour 193	0.07

Colour	BS 381C Ref.	RAL	PMS
Bold Red	564	3020	186
Lemon Yellow	355	1023	116
Emerald Green	228	6024	
Yellow Green	NA	6018	361
Deep Chrome Green	267	6002	350
Strong Blue	107	5015	2945
Graphite Black	642	9011	Black
Traffic White		9016	White

Other colours are available on request.

All colour references are approximate and therefore may vary slightly from batch to batch. In areas where colour matching is of high importance, please notify the office in writing. Hycolour 193 swatches are available upon request. If however,

PRODUCT INFORMATION - HYCOLOUR 193

you require corporate colours, or need a specific colour matched, please contact us to discuss your needs.

Surface Preparation and Product Application

See separate detailed Method Statement.

Aftercare

As part of routine maintenance, the surface may be cleaned using standard household type detergent solutions. Rinse with clean water afterwards.

Packaging & Storage

Hycolour is supplied as a two component pack comprising Part A (Base) and Part B (Activator) components. Pack sizes are nominally 25kg and 5kg although the actual weight is dependent upon the colour chosen and can vary somewhat over or under this weight.

Store under cover in dry, well ventilated conditions.

To ensure optimum application properties, Hycolour 193 should be stored at room temperature prior to use.

Shelf life is normally 12 months.

Health & Safety

Please see Separate Health and Safety Sheet for details.



Revised September 2013

HYCOLOUR 193

Extra Durable Slip Resistant Coloured Coating



Hycolour 193 could change the way you think about coloured surfacing!

Hycolour 193 outperforms other low-build coloured coatings by offering UV stable colour demarcation and slip/skid resistance but with class leading durability at a sensible cost.

Hycolour 193 can be applied by various methods to suit site conditions and its unique cure profile allows a rapid return to service for the treated area.

So, when you need durable coloured surfacing for car parks, walkways, ramps, factory or warehouse floors or play areas, select Hycolour 193.

Areas of Use

- Highways
- Multi-storey car parks
- Outdoor car parks
- Central reservations
- Cycle ways
- Retail parks
- Airports
- Docking ramps
- Boat walkways
- Factories
- Roads
- Schools

Features and Benefits

- A range of bright UV stable colours
- High level of friction to reduce skid/slip
- High opacity
- Class leading durability
- Excellent adhesion to many surfaces
- Fast drying
- Choice of application methods spray, roller or brush
- Unique twin cure - short tack-free time and long pot life
- Fuel resistant

New Application Video Guide - Visit www.adbruf.com



Graphite Black

These are a few examples of the colours that are available from Adbruf - contact us for more information. Please be aware that our colour range is continually updated - visit our website for more information.



Lemon Yellow



Yellow Green



Deep Chrome Green



Emerald Green



Bold Red



Strong Blue



Traffic White

What to do next.....

Visit www.adbruf.com to watch our two new Hycolour 193 videos which highlight the many benefits from choosing a Hycolour 193 coating system and provide comprehensive advice on how to install a Hycolour 193 surface. Sit back, relax and watch our videos today.

Call or email us now to discuss your requirements in detail.

To find out more about our full range, call us or visit our website where you can view our full product catalogue and obtain further information on all of our products.



Adbruf Ltd, Gibbs Marsh Trading Estate, Stalbridge, Dorset, DT10 2RX, UK

Tel: + 44 (0)1963 362640

Email: sales@adbruf.com

Web: www.adbruf.com