

## TDS MEMBERSHIP BENEFITS

- 5 MEETINGS per year
- INFORMATIVE PROGRAMS highlighted by a nationally known hybridizer at the November brunch
- INFORMATION ABOUT Regional Meetings and National Conventions
- GARDEN VISITS to local or out-of-state daylily gardens; some AHS Display Gardens
- INFORMATION ON THE BEST CULTIVATION OF DAYLILIES
- DAYLILY SALES, AUCTIONS AND EXCHANGES
- PLANTS FOR MEMBERS PROGRAM where each **eligible** member receives a daylily to grow & evaluate, keeping a double fan & returning the increase to the club's fall auction
- FRIENDSHIP with like-minded gardeners

### JOIN THE AMERICAN HEMEROCALLIS SOCIETY

[www.daylilies.org](http://www.daylilies.org)

Individual Dues	\$25/yr or \$70/3yrs
Dual Membership (2 people)	\$30/yr or \$83/3yrs
Youth (to 18yrs)	\$10/yr

Send to: Pat Mercer  
P.O. Box 10  
Dexter, GA 31019

\*Members receive 2-4 Regional newsletters and 4 National Journals per year

### FOR MORE INFORMATION

[www.tidewaterdaylilysociety.org](http://www.tidewaterdaylilysociety.org)

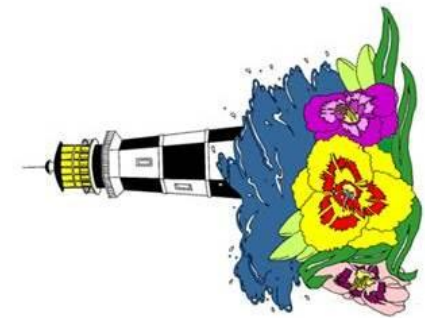
AHS website: [www.daylilies.org](http://www.daylilies.org)

Charlotte's Daylily Diary

[www.daylilydiary.com](http://www.daylilydiary.com)

# Tidewater Daylily Society

...promoting "The Perfect Perennial"



*Region 3*

*American Hemerocallis Society*

## MEMBERSHIP APPLICATION

Membership Year is January – December  
Single \$10.00 Family \$15.00

Name \_\_\_\_\_

Address \_\_\_\_\_

\_\_\_\_\_

City \_\_\_\_\_

State \_\_\_\_\_ Zip \_\_\_\_\_

Phone No. \_\_\_\_\_

Email \_\_\_\_\_

(Note: None of the above information will be shared,  
sold, rented or given to any other groups)

Please make your dues check payable to:

### TIDEWATER DAYLILY SOCIETY

Mail with this application form to:

**TDS Treasurer**  
**c/o 861 North Haven Circle**  
**Chesapeake, VA 23322**

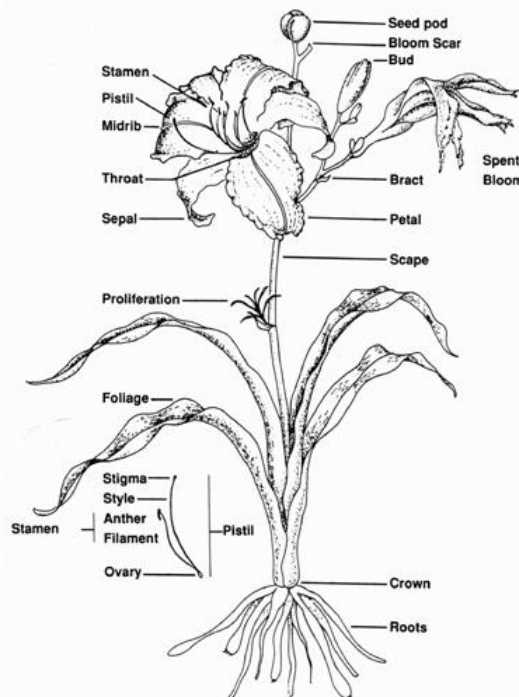
Visit our website  
[www.tidewaterdaylilysociety.org](http://www.tidewaterdaylilysociety.org)

**Facebook**  
[www.facebook.com/pages/Tidewater-Daylily-Society/141893082622680](http://www.facebook.com/pages/Tidewater-Daylily-Society/141893082622680)

# TIDEWATER DAYLILY SOCIETY

Our membership includes gardeners of all types with various levels of expertise. We welcome everyone who enjoys daylilies!!!

## PARTS OF A DAYLILY



*Parts of a Daylily*

drawing by Cheryl Postlewait

Peak bloom season in the Tidewater area is from June to mid-July. Visit gardens while the daylilies are in full bloom. It is the best time to buy because you can see the blooms and evaluate the plants. TDS has daylilies on display at Norfolk Botanical Garden on Azalea Garden Road and at VA Agricultural Research Extension Center on Diamond Springs Road.

## Growing Daylilies

Daylilies make a wonderful perennial for the flower border in our area. The Latin name for daylily is *Hemerocallis*, meaning beauty for the day. Although each flower lasts but one day, a mature plant can have 15-50 blooms per scape, so the season of color can be quite long. Blooming from April to November (depending on the cultivar and weather), they come in a wide variety of colors, shapes, sizes and heights. Blooms can be from 1" to 12" across, on scapes from 6" to 45" high. Colors come in a broad spectrum from almost white through cream, yellow, gold, orange, salmon, red, purple, lavender, pink, brown, and blackish. Some have contrasting eyezones and edges. Some are blends of various colors. The combinations are limitless. Someday there will even be a blue daylily. The flowers can have a rounded form or be spidery or doubled. In our area, dormant, semi-evergreen and evergreen daylilies can be planted. Daylilies will grow under almost all conditions. However, they do best when grown in good garden soil enriched with lots of humus. The optimum pH is 5.8 – 7.0. During the bloom season, extra watering will help blooms be larger and plants to grow faster. Mulching and fertilizing is also important. Daylilies bloom best when planted in full sun (at least 6 hours per day). They will do well in high light shade, but not dense shade. Daylilies can be divided in the Tidewater area from March to mid-October. Divisions can also be planted during these times or anytime if grown in a pot.

### Growers in the Tidewater Area (Call Before Your Go)

John Bunting, Bunting Daylily Garden [jnbunting@cox.net](mailto:jnbunting@cox.net)  
57 W. Sandy Point Rd., Poquoson 23662, 757 868-7059

Bill DuPaul, Cachalot Farms [dupaul@vims.edu](mailto:dupaul@vims.edu)  
6522 Jarvis Rd., Ware Neck 23061, 804 693-6742

Smithfield Gardens [smithfieldgardens@yahoo.com](mailto:smithfieldgardens@yahoo.com)  
1869 Bridge Rd., Suffolk 23433, 757 238-2505

Rich & Rikki Sterrett, Sterrett Gardens\*  
[sterrettgarden@msn.com](mailto:sterrettgarden@msn.com)  
12321 Island Neck Rd., Painter 23420, 757 442-4606

Ralph Sweetland, Sweetland Daylilies  
[lrsweetland@verizon.net](mailto:lrsweetland@verizon.net)  
3613 Dunedin Ct., Chesapeake 23321, 757 686-8407

Eileen Walsh, [eileenjoe3612@msn.com](mailto:eileenjoe3612@msn.com)  
3612 Manchester Lane VB 23452, 757 630-1614

Sandy White, River's Edge [sajowa@aol.com](mailto:sajowa@aol.com)  
221 Arrowfield Road VB 23454, 757 486-3309

\* Official AHS Display Gardens