

WILKINSON

--- RANCH ---

ANNUAL BLACK ANGUS BULL SALE

77 YEARLING BULLS • 11 TWO-YEAR-OLD BULLS
OFFERING OPEN YEARLING ANGUS HEIFERS

FEBRUARY 12, 2024 • 1:00 PM

SALE TO TAKE PLACE AT DESMET EVENT CENTER

www.wilkinsonranchinc.com

**BULLS HAVE MARBLING & MUSCLE
THAT WILL MAKE YOU MONEY!**



DVAuction
Broadcasting Real-Time Auctions

2024 YEARLING ANGUS BULL SALE

Term Explanation (All EPD information is from the American Angus Association)

CED - Calving Ease Direct - Expressed as a difference in percentage of unassisted births, with a higher value indicating greater calving ease in first-calf heifers. It predicts the average difference in ease with which a sire's calves will be born when he is bred to first-calf heifers.

BW - Birth Weight EPD predicts the difference in average birth weight of a bull's calves compared to calves of another bull. Reported in pounds, a lower number is desirable.

WW - Weaning Weight EPD predicts the difference in average 205-day weight of a bull's progeny compared to calves of another bull. Reported in pounds, a higher number is desirable.

YW - Yearling Weight EPD predicts the difference in average 365-day weight of a bull's progeny compared to progeny of another bull. Reported in pounds, a higher number is generally desirable.

SC - Scrotal Circumference - The SC EPD predicts the difference in yearling scrotal circumference of a bull's male progeny compared to progeny of another bull. Reported in centimeters, a larger number is desirable.



HD 50K - ALL BULLS IN THIS SALE HAVE BEEN ZOETIS HD 50K TESTED! This new HD 50K for Angus provides MVPs on 16 traits using more than 50,000 DNA markers, providing the most reliable genomic predictions today.

IMF - Percent Intramuscular Fat EPD reflects differences in transmitting ability between animals for intramuscular fat.

REA (Rib Eye Area) - The adjusted Rib Eye Area of a bull's progeny. The EPD is expressed in square inches.*

RADG - Residual Average Daily Gain - Expressed in pounds per day; is a predictor of a sire's genetic ability for post weaning gain in future progeny compared to that of other sires, given a constant amount of feed consumed.

\$W - Weaned Calf Value - An index value expressed in dollars per head; is the expected average difference in future progeny performances for preweaning merit. \$W includes both revenue and cost adjustments associated with differences in birth weight, weaning direct growth, maternal milk and mature cow size.

\$F - Feedlot Value - An index value expressed in dollars per head; is the expected average difference in future progeny performance for post weaning merit compared to progeny of other sires.

\$G - Grid Value - An index value expressed in dollars per head; is the expected average difference in future progeny performance for carcass grid merit. Compared to progeny of other sires.

\$B - Beef Value - An index value expressed in dollars per head; is the expected average difference in future progeny performance for post weaning and carcass value compared to progeny of other sires.

\$C - Combined Value - An index expressed in dollars per head, which includes all traits that make up both maternal weaned calf value and beef value.

The Bulls we are offering are free of all known genetic defects as monitored by the American Angus Association.

SALE FORMAT

- Bulls can be kept free at the ranch until May 1st. After May 1st there will a charge of \$5.00 per head per day.
- Pay when you pick up your bulls.
- Registration papers available upon request.
- All bulls will be semen tested.
- Lunch will be served at 12:00 PM.
- DVAUCTION

Bull Insurance will be available the day of the sale. Wilkinson Ranch will pay 1/2 of your premium of your insurance purchased that day.

Bulls are guaranteed semen tested so if your veterinarian does not pass said bull(s), they cannot be returned /brought back for replacement/refund. If you need your bull retested we would gladly make arrangements with a veterinarian of our choice.

Bull(s) can not be returned to Wilkinson Ranch. You need to purchase the insurance to cover for injury/ your personal semen test/etc.

WILKINSON

--- RANCH ---

- WELCOME -

Welcome to Wilkinson Ranch's Bull Sale. Wilkinson Ranch is a family owned and operated ranch . We know it is important to our customers that the bulls you are selecting are born and raised on our ranch.

To Be a cattleman, you have to be tough and welcome a day of hard work. To be a Successful cattleman.... You also have to be smart. That starts with choosing the RIGHT Bulls and Heifers. Our bulls have Marbling and Muscle that will make you money, by expanding your market possibilities. What kind of beef do you want to eat?

The ranch consists of the Mother, Mary, Sons Dan and Mark and families. Our daughter, Vicki, who helps with the bull books and A.I. ing. Family is an important part of our operation and is a big part of our success. We have a strong work ethic, which motivates us to set goals for our operation and industry for the next generation.

We select our bulls from over 600 dams. We have 50+ Pathfinder cows every year. Our cattle are bred for quality and genetic makeup, which results in the mother's having great longevity in the herd and can function in a real world of grazing grass and cornstalks. Their offspring will add real value in what the market demands. We take great pride in the maternal and carcass values we have developed on our cow herd.

We A.I. about 200 heifers and 360 cows every year selecting A.I. sires with our customers and beef industry in mind. With the wide use of Artificial Inseminations, DNA and 50K Testing, we are in the information age of the cattle business. You have more tools than ever to help you in making your genetic selection. Combining these tools with the cowman's eye can take you to the future, while adding new markets with an emphasis on marbling and muscle, an attribute that some Angus and other breeds don't have.

We think by continually adding more values to our bulls, the cattle industry, as a whole will be better by making people's eating experience a great one each and every time they consume our products.

Thank you for your interest and please feel free to call with any questions.

OUR GOAL: TO BUILD LASTING RELATIONSHIPS WITH CATTLEMEN ONE AT A TIME.

Mark Wilkinson
C) 605-203-0380

Dan Wilkinson
C) 605-203-0378

B A R DYNAMIC



BASIN PAYWEIGHT 006S
 BASIN PAYWEIGHT 1682
 21AR O LASS 7017
DEER VALLEY GROWTH FUND
 PLATTEMERE WEIGH UP K360
 DEER VALLEY RITA 36113
 DEER VALLEY RITA 9457
 A A R TEN X 7008 S A
 THREE TREES XCEPTIONAL B0048
 ERICA JOY OF CONANGA 4578
BA A R BLACKCAP 7235-B0048
 POSS TOTAL IMPACT 745
 BA A R BLACKCAP 3683-745
 GA R OBJECTIVE 1895

REGISTRATION #		TATTOO		DOB				
AAA 19923789		403		1/24/20				
CED	BW	WW	YW	RADG	DMI	YH	SC	DOC
+16	-3.8	+82	+149	+35	+1.48	+5	+96	+19
.75	.90	.87	.78	.43	.43	.79	.74	.71
HP	CEM	MILK	MKH	MW	MH	\$EN	MARB	RE
+13.7	+13	+27		+113	+5	-42	+1.22	+70
.39	.34	.36		.46	.47		0.48	.48
\$W		\$F		\$G		\$B		
+77		+104		+81		+185		

1

WILKS DYNAMIC 53X

REG: AAA20806721 Tattoo: 53X DOB: 02/25/23

★ HB

DEER VALLEY GROWTH FUND
B A R DYNAMIC
 B A R BLACKCAP 7235-B0048
 2XL BRONC 8153
WILKS PRINCESS 381
 WILKS PRINCESS 7

DAM TAG	38-1
2023 BIRTH WT	65
205 DAY ADJ WT	769
ADJ YW	1393

CED	BW	WW	YW	RADG	SC	MK	MARB	RE
+12	-1.2	+83	+152	+0.32	+0.75	+31	+1.10	+0.54
\$W	\$F	\$G	\$B	\$C				
+83	+92	+70	+162	+271				

2

WILKS DYNAMIC 73X

REG: AAA20806701 Tattoo: 73X DOB: 03/02/23

★ HB

DEER VALLEY GROWTH FUND
B A R DYNAMIC
 B A R BLACKCAP 7235-B0048
 WILKS OUTRIGHT KING 126X
WILKS WITCH 301
 WILKS SITZ3 WITCH 90

DAM TAG	30-1
2023 BIRTH WT	70
205 DAY ADJ WT	732
ADJ YW	1290

CED	BW	WW	YW	RADG	SC	MK	MARB	RE
+6	+2.5	+88	+157	+0.37	+1.34	+16	+0.60	+1.04
\$W	\$F	\$G	\$B	\$C				
+62	+110	+56	+166	+262				

3 WILKS DYNAMIC 83X ★ HB

REG: AAA20806706 Tattoo: 83X DOB: 02/20/23

DEER VALLEY GROWTH FUND	DAM TAG	84-1
B A R DYNAMIC	2023 BIRTH WT	55
B A R BLACKCAP 7235-B0048	205 DAY ADJ WT	714
WILKS RAMPAGE 507X	ADJ YW	1324
WILKS BLACKCAP BARB 841		
WILKS BLACKCAP BARB 164		

CED	BW	WW	YW	RADG	SC	MK	MARB	RE
+9	-0.8	+69	+120	+0.26	+0.41	+28	+0.69	+0.44
\$W	\$F	\$G	\$B	\$C				
+72	+82	+51	+134	+237				

4 WILKS DYNAMIC 93X ★ HB

REG: AAA20806708 Tattoo: 93X DOB: 03/01/23

DEER VALLEY GROWTH FUND	DAM TAG	73-1
B A R DYNAMIC	2023 BIRTH WT	65
B A R BLACKCAP 7235-B0048	205 DAY ADJ WT	801
WILKS ENHANCE 939X	ADJ YW	1403
WILKS BLACKCAP 731		
WILKS BLACKCAP 1627		

CED	BW	WW	YW	RADG	SC	MK	MARB	RE
+8	-0.2	+75	+131	+0.27	+2.60	+28	+0.96	+0.77
\$W	\$F	\$G	\$B	\$C				
+73	+89	+68	+157	+267				

5 WILKS DYNAMIC 103X ★ HB

REG: AAA20806720 Tattoo: 103X DOB: 02/23/23

DEER VALLEY GROWTH FUND	DAM TAG	34-1
B A R DYNAMIC	2023 BIRTH WT	60
B A R BLACKCAP 7235-B0048	205 DAY ADJ WT	757
2XL BRONC 8153	ADJ YW	1300
WILKS EDELLAMERE 341		
WILKS EDELLAMERE 73		

CED	BW	WW	YW	RADG	SC	MK	MARB	RE
+4	+0.6	+84	+142	+0.28	+0.72	+27	+1.02	+0.63
\$W	\$F	\$G	\$B	\$C				
+79	+99	+71	+170	+270				



6 WILKS DYNAMIC 113X ★ HB

REG: AAA20806719 Tattoo: 113X DOB: 02/28/23

DEER VALLEY GROWTH FUND	DAM TAG	7-1
B A R DYNAMIC	2023 BIRTH WT	65
B A R BLACKCAP 7235-B0048	205 DAY ADJ WT	738
2XL BRONC 8153	ADJ YW	1289
WILKS KATHLEENMERE 71		
WILKS KATHLEENMERE 155		

CED	BW	WW	YW	RADG	SC	MK	MARB	RE
+10	-1.3	+74	+139	+0.30	+0.65	+31	+1.30	+0.45
\$W	\$F	\$G	\$B	\$C				
+71	+83	+81	+164	+259				

7 WILKS DYNAMIC 153X ★ HB

REG: AAA20806700 Tattoo: 153X DOB: 03/06/23

DEER VALLEY GROWTH FUND	DAM TAG	82-1
B A R DYNAMIC	2023 BIRTH WT	60
B A R BLACKCAP 7235-B0048	205 DAY ADJ WT	742
WILKS RAMPAGE 507X	ADJ YW	1329
WILKS EDELLAMERE 821		
WILKS WDELLAMERE 159		

CED	BW	WW	YW	RADG	SC	MK	MARB	RE
+10	+0.6	+89	+153	+0.35	+1.61	+25	+0.95	+1.05
\$W	\$F	\$G	\$B	\$C				
+83	+98	+75	+173	+294				

8 WILKS DYNAMIC 223X ★ HB

REG: AAA20806718 Tattoo: 223X DOB: 02/26/23

DEER VALLEY GROWTH FUND	DAM TAG	40-1
B A R DYNAMIC	2023 BIRTH WT	60
B A R BLACKCAP 7235-B0048	205 DAY ADJ WT	767
2XL BRONC 8153	ADJ YW	1340
WILKS WITCH 401		
WILKS WOTCJ 2		

CED	BW	WW	YW	RADG	SC	MK	MARB	RE
+5	+0.2	+83	+146	+0.27	+0.54	+27	+1.21	+0.46
\$W	\$F	\$G	\$B	\$C				
+78	+83	+76	+159	+267				

9 WILKS DYNAMIC 243X ★ HB

REG: AAA20806712 Tattoo: 243X DOB: 02/24/23

DEER VALLEY GROWTH FUND	DAM TAG	94-1
B A R DYNAMIC	2023 BIRTH WT	70
B A R BLACKCAP 7235-B0048	205 DAY ADJ WT	736
STEVENSON BIG LEAGUE 70749	ADJ YW	1353
WILKS BESSIE 941		
WILKS BESSIE 128		

CED	BW	WW	YW	RADG	SC	MK	MARB	RE
+6	+2.4	+89	+160	+0.34	+1.01	+28	+0.43	+0.73
\$W	\$F	\$G	\$B	\$C				
+74	+126	+43	+169	+252				



LOT #10

10 WILKS DYNAMIC 283X



REG: AAA20806715 Tattoo: 283X DOB: 02/21/23

DEER VALLEY GROWTH FUND
B A R DYNAMIC
 B A R BLACKCAP 7235-B0048
 2XL BRONC 8153
WILKS EMPRESS 171
 WILKS EMPRESS 114

DAM TAG	17-1
2023 BIRTH WT	60
205 DAY ADJ WT	779
ADJ YW	1418

CED	BW	WW	YW	RADG	SC	MK	MARB	RE
+11	-0.4	+89	+148	+0.28	+1.12	+14	+1.00	+0.87
\$W	\$F	\$G	\$B	\$C				
+75	+87	+71	+157	+271				

11 WILKS DYNAMIC 293X



REG: AAA20806717 Tattoo: 293X DOB: 02/25/23

DEER VALLEY GROWTH FUND
B A R DYNAMIC
 B A R BLACKCAP 7235-B0048
 2XL BRONC 8153
WILKS MAUD 371
 WILKS MAUD 22

DAM TAG	37-1
2023 BIRTH WT	55
205 DAY ADJ WT	741
ADJ YW	1211

CED	BW	WW	YW	RADG	SC	MK	MARB	RE
+15	-2.8	+76	+140	+0.30	-0.14	+32	+0.76	+0.84
\$W	\$F	\$G	\$B	\$C				
+82	+87	+58	+145	+261				

12 WILKS DYNAMIC 303X



REG: AAA20806702 Tattoo: 303X DOB: 02/24/23

DEER VALLEY GROWTH FUND
B A R DYNAMIC
 B A R BLACKCAP 7235-B0048
 2XL BRONC 8153
WILKS EDELLAMERE 351
 WILKS EDELLAMERE 29

DAM TAG	35-1
2023 BIRTH WT	60
205 DAY ADJ WT	760
ADJ YW	1348

CED	BW	WW	YW	RADG	SC	MK	MARB	RE
+10	-2.1	+74	+129	+0.28	+0.33	+26	+1.13	+0.47
\$W	\$F	\$G	\$B	\$C				
+77	+91	+71	+162	+287				

13 WILKS DYNAMIC 313X



REG: AAA20806716 Tattoo: 313X DOB: 02/21/23

DEER VALLEY GROWTH FUND
B A R DYNAMIC
 B A R BLACKCAP 7235-B0048
 STEVENSON BIG LEAGUE 70749
WILKS MISS JILT 161
 WILKS 41WMD MISS JILT 15

DAM TAG	16-1
2023 BIRTH WT	65
205 DAY ADJ WT	761
ADJ YW	1157

CED	BW	WW	YW	RADG	SC	MK	MARB	RE
+9	+1.3	+88	+151	+0.29	+0.77	+20	+1.02	+0.64
\$W	\$F	\$G	\$B	\$C				
+74	+122	+66	+188	+291				

14 WILKS DYNAMIC 323X



REG: AAA20806723 Tattoo: 323X DOB: 02/20/23

DEER VALLEY GROWTH FUND
B A R DYNAMIC
 B A R BLACKCAP 7235-B0048
 G A R ASHLAND
WILKS EDELLAMERE 451
 WILKS EDELLAMERE 80

DAM TAG	45-1
2023 BIRTH WT	55
205 DAY ADJ WT	759
ADJ YW	1288

CED	BW	WW	YW	RADG	SC	MK	MARB	RE
+14	-1.1	+87	+151	+0.30	+1.53	+26	+1.19	+0.80
\$W	\$F	\$G	\$B	\$C				
+84	+94	+80	+175	+303				

15 WILKS DYNAMIC 333X

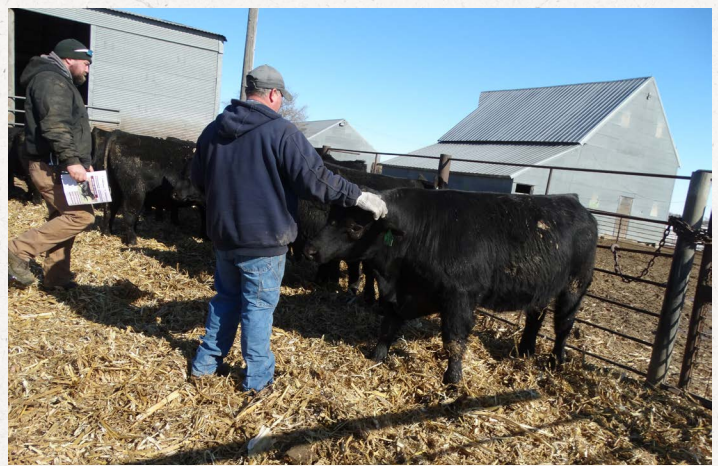


REG: AAA20806710 Tattoo: 333X DOB: 3/4/23

DEER VALLEY GROWTH FUND
B A R DYNAMIC
 B A R BLACKCAP 7235-B0048
 WILKS SAFEGUARD 28
WILKS WITCH 1461
 WILKS WP WITCH 113

DAM TAG	146-1
2023 BIRTH WT	60
205 DAY ADJ WT	735
ADJ YW	1330

CED	BW	WW	YW	RADG	SC	MK	MARB	RE
+9	+0.8	+78	+141	+0.31	+0.86	+36	+0.75	+0.84
\$W	\$F	\$G	\$B	\$C				
+76	+108	+61	+169	+260				



TEHAMA PATRIARCH F028



SYDGEN C C & 7
 HOVER DAM
 ERICA OF ELLSTON C124
S S NIAGARA Z29
 B/R NEW DAY 454
 JET S S X144
 JET S S T151
 BALDRIDGE KABOOM K243 KCF
 CONNEALY THUNDER
 PARKA OF CONANGA 241
TEHAMA ELITE BLACKBIRD D826
 MCC DAYBREAK
 TEHAMA ELITE BLACKBIRD Z630
 TEHAMA ELITE BLACKBIRD T766

REGISTRATION #	TATTOO	DOB						
AAA 18981191	F028	2/3/17						
CED	BW	WW	YW	RADG	DMI	YH	SC	DOC
+14	-1.8	+66	+130	+28	+2.09	+2	+1.32	+21
.91	.96	.95	.92	.53	.53	.93	.91	.87
HP	CEM	MILK	MKH	MW	MH	SEN	MARB	RE
+16.8	+17	+30	+74	+68	+2	-21	+85	+79
.71	.76	.70	254	.61	.68		0.62	.59
\$W	\$F	\$G	\$B					
+73	+93	+65	+157					

16 WILKS PATRIARCH 133X

REG: AAA20806714 Tattoo: 133X DOB: 02/26/23

S S NIAGARA Z29
TEHAMA PATRIARCH F028 DAM TAG 111-1
 TEHAMA ELITE BLACKBIRD D826 2023 BIRTH WT 65
 BYERGO BLACK MAGIC 3348 205 DAY ADJ WT 708
WILKS MARY 1111
 WILKS 41WMD MARY 28 ADJ YW 1244

CED	BW	WW	YW	RADG	SC	MK	MARB	RE
+11	-0.3	+65	+127	+0.29	+1.14	+27	+0.81	+0.51
\$W	\$F	\$G	\$B	\$C				
+63	+104	+60	+163	+273				

17 WILKS PATRIARCH 233X

REG: AAA20806711 Tattoo: 233X DOB: 02/28/23

S S NIAGARA Z29
TEHAMA PATRIARCH F028 DAM TAG 75-1
 TEHAMA ELITE BLACKBIRD D826 2023 BIRTH WT 65
 DEER VALLEY GROWTH FUND 205 DAY ADJ WT 715
WILKS SKYHIGH LOVER 751
 WILKS ADJ YW 1185

CED	BW	WW	YW	RADG	SC	MK	MARB	RE
+5	+2.1	+84	+152	+0.28	+1.19	+30	+0.49	+0.84
\$W	\$F	\$G	\$B	\$C				
+77	+112	+48	+160	+275				

DB ICONIC G95



GENEX

Kate Roberts

LD CAPITALIZT 316
MUSGRAVE 316 STUNNER
 MCATL BLACKBIRD 831-1378
 MCATL BLACKBIRD 1378-573
 V A R DISCOVERY 2240
DB MS DISCOVER D13
 DB MS FINAL TOOL 4120

CONNEALY CAPITALIST 028
 LD DIXIE ERICA 2053
 MCATL PURE PRODUCT 903-55
 A A R TEN X 7008 S A
 DEER VALLEY RITA 0308
 PA POWER TOOL 9108
 DB MS FINAL ANSWER 17

REGISTRATION #		TATTOO		DOB				
AAA 19611994		G95		2/14/19				
CED	BW	WW	YW	RADG	DMI	YH	SC	DOC
+6	+1.2	+85	+150	+30	+1.85	+4	+1.51	+23
.82	.95	.94	.88	.58	.58	.90	.89	.79
HP	CEM	MILK	MKH	MW	MH	\$EN	MARB	RE
+12.7	+5	+25		+114	+5	-42	+1.74	+54
.40	.45	.36		.47	.48		0.61	+58
\$W		\$F		\$G		\$B		
+73		+102		+103		+205		

18

WILKS ICONIC 553X



REG: AAA20808691 Tattoo: 553X DOB: 03/09/23

MUSGRAVE 316 STUNNER
DB ICONIC G95
 DB MS DISCOVERY D13
 SITZ UPWARD 11561
WILKS SITZ391 EBOREAMERE 102
 WILKS NEUT 18 EBOREAMERE 321

DAM TAG 102-4
2023 BIRTH WT 80
205 DAY ADJ WT 736
ADJ YW 1308

CED	BW	WW	YW	RADG	SC	MK	MARB	RE
+9	+4	+68	+129	+0.28	+0.88	+24	+77	+0.34
\$W	\$F	\$G	\$B	\$C				
+61	+95	+54	+149	+247				

19

WILKS ICONIC 693X



REG: AAA20808668 Tattoo: 693X DOB: 03/11/23

MUSGRAVE 316 STUNNER
DB ICONIC G95
 DB MS DISCOVERY D13
 QUAKER HILL RAMPAGE 0A36
WILKS EDELLAMERE 587
 WILKS NS EDELLAMERE 28

DAM TAG 58-7
2023 BIRTH WT 89
205 DAY ADJ WT 838
ADJ YW 1433

CED	BW	WW	YW	RADG	SC	MK	MARB	RE
+9	+1.6	+80	+142	+0.32	+0.77	+23	+1.29	+0.63
\$W	\$F	\$G	\$B	\$C				
+71	+111	+86	+197	+294				

20 WILKS ICONIC 763X

REG: AAA20808619 Tattoo: 763X DOB: 03/10/23

MUSGRAVE 316 STUNNER
DB ICONIC G95
 DB MS DISCOVERY D13
 WILKS CONS BOY 2343
WILKS BLACKCAP 98
 WILKS REV BLACKCAP 76

DAM TAG	98-8
2023 BIRTH WT	75
205 DAY ADJ WT	791
ADJ YW	1422

CED	BW	WW	YW	RADG	SC	MK	MARB	RE
+4	+2.7	+76	+134	+0.28	+1.14	+28	+1.10	+0.93
\$W	\$F	\$G	\$B	\$C				
+66	+96	+76	+172	+271				



LOT #20

21 WILKS ICONIC 773X



REG: AAA20808692 Tattoo: 773X DOB: 03/13/23

MUSGRAVE 316 STUNNER
DB ICONIC G95
 DB MS DISCOVERY D13
 CONNEALY CONSENSUS 7229
WILKS CONS MARY 107
 WILKS LIMITED MARY 82

DAM TAG	107-3
2023 BIRTH WT	80
205 DAY ADJ WT	825
ADJ YW	1398

CED	BW	WW	YW	RADG	SC	MK	MARB	RE
+4	+1.8	+72	+113	+0.20	+1.29	+16	+0.56	+0.58
\$W	\$F	\$G	\$B	\$C				
+64	+64	+46	+110	+201				

22 WILKS ICONIC 843X



REG: AAA20808624 Tattoo: 843X DOB: 03/18/23

MUSGRAVE 316 STUNNER
DB ICONIC G95
 DB MS DISCOVERY D13
 WILKS WAYLON 55
WILKS EBOREAMERE 57
 WILKS SG EBOREAMERE 1

DAM TAG	57-8
2023 BIRTH WT	75
205 DAY ADJ WT	789
ADJ YW	1428

CED	BW	WW	YW	RADG	SC	MK	MARB	RE
+9	+0.7	+65	+117	+0.28	+1.24	+29	+1.28	+0.68
\$W	\$F	\$G	\$B	\$C				
+64	+86	+85	+141	+277				

23 WILKS ICONIC 923X



REG: AAA20808616 Tattoo: 923X DOB: 03/09/23

MUSGRAVE 316 STUNNER
DB ICONIC G95
 DB MS DISCOVERY D13
 DL SONIC 444
WILKS CLASS QUEEN 62
 WILKS CLASS QUEEN 93

DAM TAG	62-8
2023 BIRTH WT	60
205 DAY ADJ WT	790
ADJ YW	1465

CED	BW	WW	YW	RADG	SC	MK	MARB	RE
+8	+0.3	+94	+167	+0.33	+1.93	+25	+1.06	+0.93
\$W	\$F	\$G	\$B	\$C				
+82	+113	+77	+190	+298				



LOT #23



LOT #24

24 WILKS ICONIC 1313X

REG: AAA20808688 Tattoo: 1313X DOB: 03/19/23

MUSGRAVE 316 STUNNER
DB ICONIC G95
 DB MS DISCOVERY D13
 HAYNES OUTRIGHT 452
WILKS EXTRA MAUD 28
 WILKS SITZ325 EXTRAMAUD 95

DAM TAG	28-6
2023 BIRTH WT	85
205 DAY ADJ WT	909
ADJ YW	1590

CED	BW	WW	YW	RADG	SC	MK	MARB	RE
-6	+6.3	+104	+183	+0.36	+2.79	+23	+0.80	+0.64
\$W	\$F	\$G	\$B	\$C				
+68	+146	+58	+205	+302				

WILLIAMS JONESBORO 700-602



SYDGEN ENHANCE
 SYDGEN EXCEED 3223
 SYDGEN RITA 2618
S S ENFORCER E812
 S S DAYBREAK K011
 S S MISS DAYBREAK K011 3K17
 S S MISS INCENTIVE X19
 V A R DISCOVERY 2240
 ECO LOMBARDI 1512
POWELL ERICA 7312
 RB LADY 7125-890-2170
 G A R PROPHET
 WILLIAMS PROP ERICA 255-895
 WILLIAMS ERICA 812

REGISTRATION #	TATTOO	DOB
AAA 19850751	602	9/1/20

CED	BW	WW	YW	RADG	DMI	YH	SC	DOC
+4	+2.5	+100	+177	+36	+2.26	+1.2	+1.61	+23
.44	.73	.63	.49	.34	.34	.57	.45	.45

HP	CEM	MILK	MKH	MW	MH	\$EN	MARB	RE
+12.8	+12	+30		+88	+1.1	-31	+1.19	+1.21
.22	3.10	.31		.39	.41		0.38	.38

\$W	\$F	\$G	\$B
+90	+144	+89	+233

25

WILKS JONESBORO 393X



REG: AAA20808489 Tattoo: 393X DOB: 03/14/23

S S ENFORCER E812
WILLIAMS JONESBORO 700-602
 POWELL ERICA 7312
 DL SONIC 444
WILKS ELINA 18
 WILKS ELINA 178

DAM TAG 18-8
2023 BIRTH WT 75
205 DAY ADJ WT 790
ADJ YW 1517

CED	BW	WW	YW	RADG	SC	MK	MARB	RE
+1	+2.0	+96	+174	+0.37	+1.52	+34	+1.13	+0.99

\$W	\$F	\$G	\$B	\$C
+86	+115	+84	+200	+333



26

WILKS JONESBORO 423X



REG: AAA20808494 Tattoo: 423X DOB: 03/14/23

S S ENFORCER E812
WILLIAMS JONESBORO 700-602
POWELL ERICA 7312

DAM TAG 154-7

2023 BIRTH WT 80

WILKS NEW STANDARD 482

205 DAY ADJ WT 718

WILKS EBOREAMERE 1547

WILKS HI DEF EBOREAMERE 148

ADJ YW 1276

CED	BW	WW	YW	RADG	SC	MK	MARB	RE
+8	+1.0	+65	+120	+0.26	+0.61	+27	+1.04	+0.61
\$W	\$F	\$G	\$B	\$C				
+68	+113	+68	+181	+322				

27

WILKS JONESBORO 443X

REG: AAA20808493 Tattoo: 443X DOB: 03/15/23

S S ENFORCER E812
WILLIAMS JONESBORO 700-602
POWELL ERICA 7312

DAM TAG 166-7

2023 BIRTH WT 80

RITO REVENUE 5M2 OF 2536 PRE

205 DAY ADJ WT 793

WILKS RITA ROSEBUD 1667

WILKS TOTAL RITO ROSEBUD 118

ADJ YW 1520

CED	BW	WW	YW	RADG	SC	MK	MARB	RE
+2	+3.7	+85	+160	+0.35	+1.63	+31	+1.38	+0.59
\$W	\$F	\$G	\$B	\$C				
+70	+122	+89	+212	+330				

28

WILKS JONESBORO 543X

REG: AAA20808492 Tattoo: 543X DOB: 03/23/23

S S ENFORCER E812
WILLIAMS JONESBORO 700-602
POWELL ERICA 7312

DAM TAG 30-7

2023 BIRTH WT 75

K C F BENNETT SOUTHSIDE

205 DAY ADJ WT 813

WILKS SHOSHONE 307

WILKS WHIT SHOSHONE 158

ADJ YW 1400

CED	BW	WW	YW	RADG	SC	MK	MARB	RE
+4	+2.4	+81	+134	+0.25	+1.41	+25	+0.93	+0.69
\$W	\$F	\$G	\$B	\$C				
+77	+107	+66	+173	+315				

29

WILKS JONESBORO 733X

REG: AAA20808491 Tattoo: 733X DOB: 03/09/23

S S ENFORCER E812
WILLIAMS JONESBORO 700-602
POWELL ERICA 7312

DAM TAG 60-7

2023 BIRTH WT 85

QUAKER HILL RAMPAGE 0A36

205 DAY ADJ WT 871

WILKS EULINA 607

WILKS MANDATE EULINA 10

ADJ YW 1400

CED	BW	WW	YW	RADG	SC	MK	MARB	RE
+8	+1.6	+81	+144	+0.32	+1.70	+34	+0.98	+0.99
\$W	\$F	\$G	\$B	\$C				
+81	+116	+74	+191	+316				

30

WILKS JONESBORO 833X



REG: AAA20808496 Tattoo: 833X DOB: 03/05/23

S S ENFORCER E812
WILLIAMS JONESBORO 700-602
POWELL ERICA 7312

DAM TAG 98-6

2023 BIRTH WT 70

JMB TRACTION 292

205 DAY ADJ WT 795

WILKS BLACKCAP BARB 99

WILKS 18WK205 BARB 58

ADJ YW 1324

CED	BW	WW	YW	RADG	SC	MK	MARB	RE
+9	-0.1	+74	+125	+0.23	+1.93	+27	+0.73	+0.97
\$W	\$F	\$G	\$B	\$C				
+76	+93	+60	+153	+270				



31

WILKS JONESBORO 853X



REG: AAA20808497 Tattoo: 853X DOB: 03/08/23

S S ENFORCER E812
WILLIAMS JONESBORO 700-602
POWELL ERICA 7312

DAM TAG 69-4

2023 BIRTH WT 70

WILKS FOCUS BLACKCAP BOY 40

205 DAY ADJ WT 722

WILKS INF40Y SKYHIGH 69

WILKS PRED2Y MISS SKYHIGH 95

ADJ YW 1273

CED	BW	WW	YW	RADG	SC	MK	MARB	RE
+12	-0.1	+57	+101	+0.26	+0.71	+20	+1.05	+0.64
\$W	\$F	\$G	\$B	\$C				
+53	+76	+74	+150	+247				



DEER VALLEY GROWTH FUND



VERMILION PAYWEIGHT J847
 BASIN PAYWEIGHT 006S
 BASIN LUCY 3829

BASIN PAYWEIGHT 1682

HARB PENDLETON 765 J H
 21AR O LASS 7017
 21AR O LASS F24A

SITZ UPWARD 307R
 PLATTEMERE WEIGH UP K360
 BARBARA OF PLATTEMERE 337

DEER VALLEY RITA 36113

G A R NEW DESIGN 5050
 DEER VALLEY RITA 9457
 G A R EXT 614

REGISTRATION #		TATTOO		DOB				
AAA 18827828		71122		1/22/17				
CED	BW	WW	YW	RADG	DMI	YH	SC	DOC
+8	+1.4	+89	+165	+37	+1.76	+6	+79	+21
.90	.98	.97	.95	.68	.68	.95	.94	.92
HP	CEM	MILK	MKH	MW	MH	\$EN	MARB	RE
+12.7	+13	+30	+381	+102	+5	-39	+50	+78
.78	.87	.85	1166	.74	.72		0.76	.72
\$W		\$F		\$G		\$B		
+92		+133		+43		+177		

32 WILKS GROWTH FUND 13X

REG: AAA20807500 Tattoo: 13X DOB: 03/23/23

BASIN PAYWEIGHT 1682
DEER VALLEY GROWTH FUND
 DEER VALLEY RITA 36113

WILKS CONS KING 713
WILKS ELBINA 186
 WILKS NS ELBINA 17

DAM TAG 186-6
2023 BIRTH WT 80
205 DAY ADJ WT 798
ADJ YW 1459

CED	BW	WW	YW	RADG	SC	MK	MARB	RE
+1	+3.4	+81	+143	+0.29	+0.59	+27	+0.57	+0.67
\$W	\$F	\$G	\$B	\$C				
+65	+118	+47	+165	+272				



33 WILKS GROWTH FUND 173X

REG: AAA20807482 Tattoo: 173X DOB: 03/22/23

BASIN PAYWEIGHT 1682
DEER VALLEY GROWTH FUND
 DEER VALLEY RITA 36113 **DAM TAG** 42-7
 K C F BENNETT SOUTHSIDE **2023 BIRTH WT** 80
WILKS ERICA QUEEN 427 **205 DAY ADJ WT** 833
 WILKS TURBO CLASS QUEEN 195 **ADJ YW** 1508

CED	BW	WW	YW	RADG	SC	MK	MARB	RE
+2	+3.3	+80	+144	+0.32	+1.09	+27	+0.39	+0.88
\$W	\$F	\$G	\$B	\$C				
+68	+123	+40	+164	+280				



34 WILKS GROWTH FUND 213X ^{HB}

REG: AAA20807461 Tattoo: 213X DOB: 03/21/23

BASIN PAYWEIGHT 1682
DEER VALLEY GROWTH FUND
 DEER VALLEY RITA 36113 **DAM TAG** 172-8
 DL SONIC 444 **2023 BIRTH WT** 70
WILKS EMPRESS 172 **205 DAY ADJ WT** 745
 WILKS EMPRESS 122 **ADJ YW** 1472

CED	BW	WW	YW	RADG	SC	MK	MARB	RE
+12	+0.2	+88	+156	+0.32	+1.65	+28	+0.55	+0.57
\$W	\$F	\$G	\$B	\$C				
+88	+108	+44	+153	+273				

35 WILKS GROWTH FUND 483X

REG: AAA20807512 Tattoo: 483X DOB: 03/14/23

BASIN PAYWEIGHT 1682
DEER VALLEY GROWTH FUND
 DEER VALLEY RITA 36113 **DAM TAG** 143-4
 S A V HARVESTOR 0338 **2023 BIRTH WT** 80
WILKS HARV ROSEBUD 143 **205 DAY ADJ WT** 795
 WILKS 10GR 112 ROSEBUD 46 **ADJ YW** 1353

CED	BW	WW	YW	RADG	SC	MK	MARB	RE
+1	+3.0	+73	+129	+0.30	+0.32	+30	+0.41	+0.62
\$W	\$F	\$G	\$B	\$C				
+68	+108	+38	+146	+246				

36 WILKS GROWTH FUND 493X ^{HB}

REG: AAA20807455 Tattoo: 493X DOB: 03/26/23

BASIN PAYWEIGHT 1682
DEER VALLEY GROWTH FUND
 DEER VALLEY RITA 36113 **DAM TAG** 104-8
 QUAKER HILL MANNING 4EX9 **2023 BIRTH WT** 70
WILKS SKYHIGH LOVER 104 **205 DAY ADJ WT** 782
 WILKS W S QUEEN 158 **ADJ YW** 1428

CED	BW	WW	YW	RADG	SC	MK	MARB	RE
+4	+0.9	+77	+133	+0.28	+0.93	+35	+0.65	+0.47
\$W	\$F	\$G	\$B	\$C				
+82	+109	+47	+156	+271				

37 WILKS GROWTH FUND 743X ^{HB}

REG: AAA20806653 Tattoo: 743X DOB: 03/14/23

BASIN PAYWEIGHT 1682
DEER VALLEY GROWTH FUND
 DEER VALLEY RITA 36113 **DAM TAG** 81-4
 WILKS FOCUS BLACKCAP BOY 40 **2023 BIRTH WT** 80
WILKS INF40Y RITOROSEBUD 81 **205 DAY ADJ WT** 808
 WILKS TOTAL RITO ROSEBUD 118 **ADJ YW** 1439

CED	BW	WW	YW	RADG	SC	MK	MARB	RE
+8	+1.8	+75	+134	+0.28	+1.22	+30	+0.40	+0.79
\$W	\$F	\$G	\$B	\$C				
+71	+104	+42	+146	+246				

38 WILKS GROWTH FUND 873X ^{HB}

REG: AAA20807479 Tattoo: 873X DOB: 03/14/23

BASIN PAYWEIGHT 1682
DEER VALLEY GROWTH FUND
 DEER VALLEY RITA 36113 **DAM TAG** 68-7
 QUAKER HILL RAMPAGE 0A36 **2023 BIRTH WT** 75
WILKS SKYHIGH LOVER 687 **205 DAY ADJ WT** 732
 WILKS GRID 79 LOVER 160 **ADJ YW** 1297

CED	BW	WW	YW	RADG	SC	MK	MARB	RE
+6	+1.9	+72	+135	+0.30	+0.18	+34	-0.10	+0.73
\$W	\$F	\$G	\$B	\$C				
+72	+110	+16	+126	+215				

39 WILKS GROWTH FUND 883X ^{HB}

REG: AAA20807485 Tattoo: 883X DOB: 03/11/23

BASIN PAYWEIGHT 1682
DEER VALLEY GROWTH FUND
 DEER VALLEY RITA 36113 **DAM TAG** 146-7
 WILKS HARVESTOR 219 **2023 BIRTH WT** 80
WILKS RITO ROSEBUD 1467 **205 DAY ADJ WT** 769
 WILKS INF40Y RITOROSEBUD 81 **ADJ YW** 1342

CED	BW	WW	YW	RADG	SC	MK	MARB	RE
+12	+0.2	+70	+133	+0.28	+0.64	+32	+0.25	+0.58
\$W	\$F	\$G	\$B	\$C				
+72	+114	+30	+144	+239				

40

WILKS GROWTH FUND 893X ^{HB}

REG: AAA20807511 Tattoo: 893X DOB: 03/09/23

BASIN PAYWEIGHT 1682
DEER VALLEY GROWTH FUND
DEER VALLEY RITA 36113

DAM TAG 79-5

2023 BIRTH WT 80

SITZ UPWARD 10121

205 DAY ADJ WT 841

WILKS BURGESS QUEEN 79

WILKS CRED BURGESS QUEEN 129

ADJ YW 1524

CED	BW	WW	YW	RADG	SC	MK	MARB	RE
+9	+1.8	+85	+155	+0.33	+0.77	+31	+0.38	+0.82
\$W	\$F	\$G	\$B	\$C				
+81	+131	+42	+173	+284				



41

WILKS GROWTH FUND 1253X ^{HB}

REG: AAA20807509 Tattoo: 1253X DOB: 03/16/23

BASIN PAYWEIGHT 1682
DEER VALLEY GROWTH FUND
DEER VALLEY RITA 36113

DAM TAG 41-5

2023 BIRTH WT 50

WILKS IMPRESSION 2462

205 DAY ADJ WT 816

WILKS EMPRESS 41

WILKS 9ORDELUX EMPRESS 38

ADJ YW 1418

CED	BW	WW	YW	RADG	SC	MK	MARB	RE
+10	+0.8	+81	+154	+0.34	+1.14	+30	+0.51	+0.77
\$W	\$F	\$G	\$B	\$C				
+75	+121	+50	+171	+278				

42

WILKS GROWTH FUND 1263X

REG: AAA20807503 Tattoo: 1263X DOB: 03/19/23

BASIN PAYWEIGHT 1682
DEER VALLEY GROWTH FUND
DEER VALLEY RITA 36113

DAM TAG 94-6

2023 BIRTH WT 80

WILKS WAYLON 258

205 DAY ADJ WT 785

WILKS LASS 94

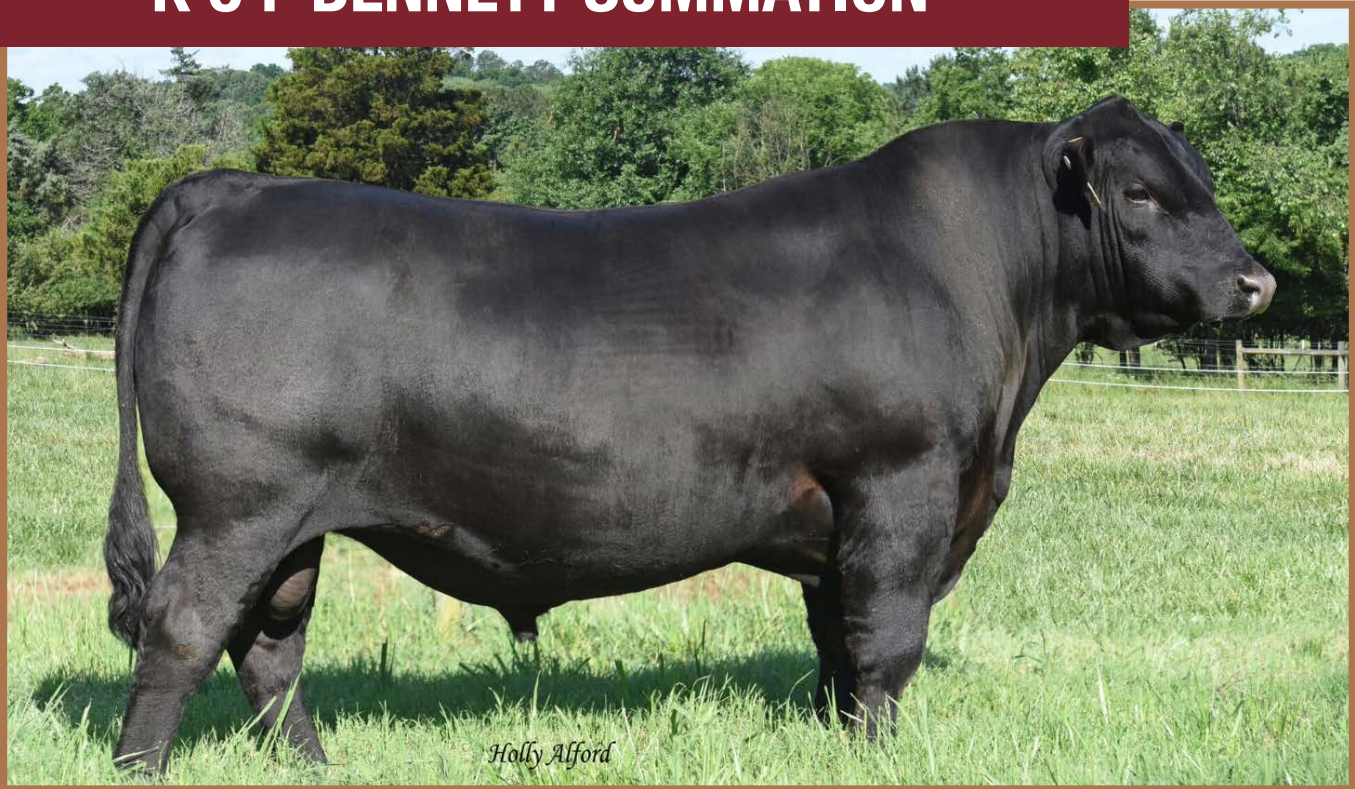
WILKS NS LASS 11

ADJ YW 1380

CED	BW	WW	YW	RADG	SC	MK	MARB	RE
+1	+3.2	+84	+148	+0.30	+1.33	+24	+0.78	+0.59
\$W	\$F	\$G	\$B	\$C				
+72	+107	+57	+164	+260				



K C F BENNETT SUMMATION



KMK ALLIANCE 6595 I87
 CONNEALY CONSENSUS
 BLINDA OF CANANGA 004
K C F BENNETT CONSENT Y75
 GAR-EGL PROTÉGÉ
 K C F MISS PROTÉGÉ W148
 BREELA OF CONANGA 3991
 S S TRAVELER 6807 T510
 S S OBJECTIVE T510 T26
THOMAS PATRICIA 9705
 S S MISS RITA R011 7R8
 G A R PREDESTINED
 THOMAS PATRICIA 71138
 THOMAS PATRICIA 2626

REGISTRATION #		TATTOO		DOB				
AAA 19125179		E802		9/15/17				
CED	BW	WW	YW	RADG	DMI	YH	SC	DOC
+13	+2	+93	+169	+33	+2.11	+4	+1.01	+22
.74	.92	.89	.82	.45	.45	.84	.82	.75
HP	CEM	MILK	MKH	MW	MH	SEN	MARB	RE
+10.0	+9	+34	28	+100	+4	-40	+78	+1.16
.50	.66	.59	.99	.62	.69		0.5	.49
\$W		\$F		\$G		\$B		
+100		+126		+65		+191		

43 WILKS SUMMATION 193X

REG: AAA20806652 Tattoo: 193X DOB: 03/21/23

K C F BENNETT CONSENT Y75
K C F BENNETT SUMMATION
 THOMAS PATRICIA 9705
 SITZ UPWARD 11561
WILKS STIZ391 MISSEULIMA 168
 WILKS H6 MISS EULIMA 101

DAM TAG 168-4
2023 BIRTH WT 80
205 DAY ADJ WT 768
ADJ YW 1363

CED	BW	WW	YW	RADG	SC	MK	MARB	RE
+3	+4.0	+82	+147	+0.31	+0.37	+34	+0.68	+0.83
\$W	\$F	\$G	\$B	\$C				
+72	+114	+61	+475	+273				

44 WILKS SUMMATION 203X

REG: AAA20806664 Tattoo: 203X DOB: 03/24/23

K C F BENNETT CONSENT Y75
K C F BENNETT SUMMATION
 THOMAS PATRICIA 9705
 WILKS 61W CRED GUY 1013
WILKS EILEEN 1567
 WILKS CONS EILEEN 103

DAM TAG 156-7
2023 BIRTH WT 75
205 DAY ADJ WT 832
ADJ YW 1434

CED	BW	WW	YW	RADG	SC	MK	MARB	RE
+2	+4.3	+89	+161	+0.34	+0.95	+34	+0.61	+0.88
\$W	\$F	\$G	\$B	\$C				
+79	+122	+54	+175	+299				

45

WILKS SUMMATION 263X



REG: AAA20806648 Tattoo: 263X DOB: 03/20/23

K C F BENNETT CONSENT Y75	DAM TAG	91-2
K C F BENNETT SUMMATION	2023 BIRTH WT	60
THOMAS PATRICIA 9705	205 DAY ADJ WT	819
WILKES K205 BOY 17	ADJ YW	1370
WILKS 17WK205 MAUD 91		
WILKS TOTAL SS MAUD 93		

CED	BW	WW	YW	RADG	SC	MK	MARB	RE
+8	+1.9	+86	+149	+0.27	+1.00	+30	+1.03	+0.79
\$W	\$F	\$G	\$B	\$C				
+83	+113	+72	+185	+298				

46

WILKS SUMMATION 433X



REG: AAA20806666 Tattoo: 433X DOB: 03/14/23

K C F BENNETT CONSENT Y75	DAM TAG	166-8
K C F BENNETT SUMMATION	2023 BIRTH WT	80
THOMAS PATRICIA 9705	205 DAY ADJ WT	795
DL SONIC 444	ADJ YW	1485
WILKS TOTAL ELLUNA 166		
WILKS ELLUNA 135		

CED	BW	WW	YW	RADG	SC	MK	MARB	RE
+11	+1.6	+87	+161	+0.32	+1.00	+27	+0.48	+0.91
\$W	\$F	\$G	\$B	\$C				
+80	+97	+48	+145	+244				

47

WILKS SUMMATION 503X



REG: AAA20806651 Tattoo: 503X DOB: 03/22/23

K C F BENNETT CONSENT Y75	DAM TAG	23-4
K C F BENNETT SUMMATION	2023 BIRTH WT	65
THOMAS PATRICIA 9705	205 DAY ADJ WT	785
PA SAFEGUARD 021	ADJ YW	1424
WILKS SG ELLUNA 23		
WILKS 41WMD ELLUNA 24		

CED	BW	WW	YW	RADG	SC	MK	MARB	RE
+16	-2.1	+71	+135	+0.28	+0.02	+34	+0.75	+0.89
\$W	\$F	\$G	\$B	\$C				
+75	+110	+59	+169	+271				



48

WILKS SUMMATION 523X



REG: AAA20806656 Tattoo: 523X DOB: 03/23/23

K C F BENNETT CONSENT Y75	DAM TAG	5-5
K C F BENNETT SUMMATION	2023 BIRTH WT	75
THOMAS PATRICIA 9705	205 DAY ADJ WT	786
K C F BENNETT ABSOLUTE	ADJ YW	1483
WILKS QUEEN 5		
WILKS 96WK205 QUEEN 173		

CED	BW	WW	YW	RADG	SC	MK	MARB	RE
+11	+0.9	+58	+110	+0.25	+0.29	+27	+0.71	+0.78
\$W	\$F	\$G	\$B	\$C				
+60	+74	+57	+131	+242				

49

WILKS SUMMATION 673X



REG: AAA20806650 Tattoo: 673X DOB: 03/17/23

K C F BENNETT CONSENT Y75	DAM TAG	68-3
K C F BENNETT SUMMATION	2023 BIRTH WT	65
THOMAS PATRICIA 9705	205 DAY ADJ WT	783
CONNELLY CONSENSUS 7229	ADJ YW	1297
WILKS CONS PRINCESS 68		
112 PRINCESS 72		

CED	BW	WW	YW	RADG	SC	MK	MARB	RE
+18	-2.5	+71	+127	+0.29	-0.04	+24	+0.70	+0.57
\$W	\$F	\$G	\$B	\$C				
+73	+107	+51	+159	+276				

50

WILKS SUMMATION 1283X



REG: AAA20806654 Tattoo: 1283X DOB: 03/23/23

K C F BENNETT CONSENT Y75	DAM TAG	80-4
K C F BENNETT SUMMATION	2023 BIRTH WT	75
THOMAS PATRICIA 9705	205 DAY ADJ WT	773
SITZ UPWARD 11561	ADJ YW	1360
WILKS SITZ391 EDELLAMERE 80		
112 EDELLAMERE 142		

CED	BW	WW	YW	RADG	SC	MK	MARB	RE
+12	+1.5	+71	+124	+0.24	+0.94	+30	+0.76	+0.82
\$W	\$F	\$G	\$B	\$C				
+76	+94	+59	+153	+266				

51

WILKS SUMMATION 1293X



REG: AAA20806676 Tattoo: 1293X DOB: 03/28/23

K C F BENNETT CONSENT Y75	DAM TAG	151-8
K C F BENNETT SUMMATION	2023 BIRTH WT	75
THOMAS PATRICIA 9705	205 DAY ADJ WT	828
WILKS SAFEGUARD 44	ADJ YW	1467
WILKS RITO QUEEN 151		
WILKS SITZ159 RITOQUEEN 49		

CED	BW	WW	YW	RADG	SC	MK	MARB	RE
+4	+3.2	+87	+157	+0.34	+1.08	+23	+0.80	+0.66
\$W	\$F	\$G	\$B	\$C				
+66	+120	+57	+177	+267				

REFERENCE SIRE: SITZ STELLAR 726D

REG: AAA 18397542 TATTOO: 726D DOB: 1/23/16

CED	BW	WW	YW	RADG	DMI	YH	SC	DOC
+5	-0.1	+69	+126	+27	+1.52	+3	+0.85	+16
.92	.97	.96	.94	.61	.61	.94	.94	.91
HP	CEM	MILK	MKH	MW	MH	\$EN	MARB	RE
+9.0	+9	+18	198	+76	+40	-19	+65	+41
.83	.86	.84	933	.72	.74		.56	.55
\$W	\$F	\$G	\$B					
+64	+91	+46	+138					

H A IMAGE MAKER 0415

BENFIELD EDELLA 1105

MOHNEN SUBSTANTIAL 272

LT TERRITORY 5824 OF EA
MOHNEN GLYN MAWR ELBA 1758
MOHNEN GLYN MAWR ELBA 1345

CONNELY PRODUCT 568

CONNELY FINAL PRODUCT
EBONISTA OF CONANGA 471

SITZ PRIDE 200B

SITZ UPWARD 307R
SITZ PRIDE 308Y
SITZ PRIDE 44P

52 WILKS STELLAR 813X

REG: AAA20806659 Tattoo: 813X DOB: 03/19/23

MOHNEN SUBSTANTIAL 272	DAM TAG	71-6
SITZ STELLAR 726D	2023 BIRTH WT	75
SITZ PRIDE 200B	205 DAY ADJ WT	767
WILKS WAYLON 55	ADJ YW	1376
WILKS MISSIE 71		
WILKS 18JK205 MISSIE 154		

CED	BW	WW	YW	RADG	SC	MK	MARB	RE
-3	+3.6	+76	+132	+0.28	+0.40	+23	+0.37	+0.26
\$W	\$F	\$G	\$B	\$C				
+61	+83	+31	+114	+196				



REFERENCE SIRE: WILKS EPIC 259X

REG: AAA 19639889 TATTOO: 259X DOB: 2/19/19

CED	BW	WW	YW	RADG	DMI	YH	SC	DOC
+5	+1.3	+87	+153	+32	+2.10	+8	+0.63	+22
.36	.58	.51	.37	.32	.32	.45	.38	.35
HP	CEM	MILK	MKH	MW	MH	\$EN	MARB	RE
+8.2	+9	+23		+131	+1.10	-49	-.02	+87
.25	.32	.35		.38	.41		.37	.36
\$W	\$F	\$G	\$B					
+72	+121	+22	+143					

CONNELY FINAL PRODUCT
VARILEK PRODUCT 2010 04
VARILEK PEARL 0006 014

3F EPIC 4631

EF COMPLEMENT 8088
ZEBO QUEEN 1072
EXG BLACKCAP 6247 PPC

S A F CONNECTION
SYDGEN C C & 7

SYDGEN FOREVER LADY 4087

WILKS CC&7 RITO EXTRA 93

NICHOLS EXTRA H6
H6 8180 ENTENSE 147
8180 TRAVELER RITO EXTRA 46

53 WILKS EPIC 643X

REG: AAA20806707 Tattoo: 643X DOB: 04/13/23

3F EPIC 4631	DAM TAG	115-1
WILKS EPIC 259X	2023 BIRTH WT	80
WILKS CC&7 RITO EXTRA 93	205 DAY ADJ WT	974
WILKS TRANSFORMER 2288X	ADJ YW	1517
WILKS SKYHIGH LOVER 1151		
WILKS SKYHIGH LOVER 847		

CED	BW	WW	YW	RADG	SC	MK	MARB	RE
+0	+4.6	+90	+154	+0.29	+1.24	+21	+0.35	+0.43
\$W	\$F	\$G	\$B	\$C				
+64	+107	+34	+140	+210				

54 WILKS EPIC 1073X

REG: AAA20806680 Tattoo: 1073X DOB: 03/22/23

3F EPIC 4631	DAM TAG	28-0
WILKS EPIC 259X	2023 BIRTH WT	60
WILKS CC&7 RITO EXTRA 93	205 DAY ADJ WT	857
WILKS WR RIGHT TIME 1247X	ADJ YW	1393
WILKS ELBINA 280		
WILKS PRED59W ELBINA 114		

CED	BW	WW	YW	RADG	SC	MK	MARB	RE
+5	+1.1	+78	+136	+0.26	+1.04	+31	+0.38	+0.75
\$W	\$F	\$G	\$B	\$C				
+75	+106	+43	+149	+246				

55

WILKS EPIC 1183X

REG: AAA20806699 Tattoo: 1183X DOB: 03/29/23

3F EPIC 4631	DAM TAG	98-0
WILKS EPIC 259X	2023 BIRTH WT	80
WILKS CC&7 RITO EXTRA 93	205 DAY ADJ WT	880
WILKS ABSOLUTE 1825	ADJ YW	1416
WILKS EBOREAMERE 980		
WILKS EBOREAMERE 1217		

CED	BW	WW	YW	RADG	SC	MK	MARB	RE
+6	+3.1	+95	+158	+0.30	+0.62	+26	+0.45	+0.59
\$W	\$F	\$G	\$B	\$C				
+80	+122	+41	+163	+250				

56

WILKS EPIC 1193X



REG: AAA20806695 Tattoo: 1193X DOB: 03/18/23

3F EPIC 4631	DAM TAG	151-0
WILKS EPIC 259X	2023 BIRTH WT	75
WILKS CC&7 RITO EXTRA 93	205 DAY ADJ WT	813
SYDGEN ENHANCE	ADJ YW	1400
WILKS MAIDEN MAUD 1510		
WILKS CC7 MAIDEN MAUD 105		

CED	BW	WW	YW	RADG	SC	MK	MARB	RE
+7	+1.5	+74	+145	+0.33	+0.98	+34	+0.22	+0.58
\$W	\$F	\$G	\$B	\$C				
+70	+94	+33	+128	+228				

REFERENCE SIRE: WILKS ASHLAND 210X

REG: AAA 19905454 TATTOO: 210X DOB: 2/21/20

CED	BW	WW	YW	RADG	DMI	YH	SC	DOC
+7	+2.3	+67	+116	+22	+1.55	+8	+0.76	+17
.35	.56	.48	.37	.33	.33	.45	.39	.35
HP	CEM	MILK	MKH	MW	MH	\$EN	MARB	RE
+7.5	+5	+24		+49	+10	-8	+1.23	+66
.25	.31	.34		.38	.41		.37	.37
\$W	\$F	\$G	\$B					
+63	+88	+82	+170					

- G A R DAYLIGHT
- G A R EARLY BIRD
- G A R PROGRESS 830
- G A R ASHLAND**
- B/R AMBUSH 28
- CHAIR ROCK AMBUSH 1018
- G A R YIELD GRADE N366
- WERNER WAR PARTY 2417
- WILKS WP BOY 2773
- WILKS 338 KAHTLEENMERE 135
- WILKS ELUMIA 137**
- WILKS REV BUD BOY 8
- WILKS 8YRR ELUMIA 98
- WILKS PRED ELUMIA 112

57

WILKS ASHLAND 163X



REG: AAA20806713 Tattoo: 163X DOB: 03/01/23

G A R ASHLAND	DAM TAG	26-1
WILKS ASHLAND 210X	2023 BIRTH WT	70
WILKS ELUMIA 137	205 DAY ADJ WT	835
2XL BRONC 8153	ADJ YW	1496
WILJKS QUEEN ELUNA 261		
WILKS QUEEN ELLUNA 99		

CED	BW	WW	YW	RADG	SC	MK	MARB	RE
+7	+1.1	+87	+147	+0.24	+1.62	+31	+0.72	+0.69
\$W	\$F	\$G	\$B	\$C				
+86	+98	+56	+153	+258				





REFERENCE SIRE: WILKS TRANSFORMER 2078X

REG: AAA 19302106 TATTOO: 2078X DOB: 3/18/18

'CONNEALY CONSENSUS 7229
V A R GENERATION 2100
SANDPOINT BLACKBIRD 8809

FLYING V TRANSFORMER

S A V BISMARCK 5682
FLYING V MISS PRIDE 95Z
FLYING V MISS PRIDE 11W

RITO 112 OF 2536 RITO 616
WILKS 112 GENT-70
N423 EXTRA BELINDA ANN 53

WILKS RITO 70R ELLUNA 157

WILK'S NEUTRON BOY
57 NEUTRON LIMIT ELLUNA 168
L EDITION'S ELLUNA M D 51

CED	BW	WW	YW	RADG	DMI	YH	SC	DOC
+15.37	+0.170	+67.64	+118.37	+25.32	+1.1232	+7.47	+0.5138	+29.33
HP	CEM	MILK	MKH	MW	MH	\$EN	MARB	RE
+15.322	+16.30	+26.35		+65.36	+60.39	-18	+55.35	+52.35
\$W	\$F	\$G	\$B					
+66	+121	+44	+165					

58

WILKS TRANSFORMER 363X



REG: AAA20806669 Tattoo: 363X DOB: 03/21/23

FLYING V TRANSFORMER
WILKS TRANSFORMER 2078X
WILKS RITO 70R ELLUNA 157
SYDGEN ENHANCE
WILKS CELEBRATION 34
WILKS IMPRESS CELEBRATION 35

DAM TAG	34-9
2023 BIRTH WT	75
205 DAY ADJ WT	778
ADJ YW	1453

CED	BW	WW	YW	RADG	SC	MK	MARB	RE
+11	+1.7	+70	+134	+0.27	+1.52	+26	+0.64	+0.73
\$W	\$F	\$G	\$B	\$C				
+65	+101	+54	+155	+271				

59

WILKS TRANSFORMER 413X



REG: AAA20806675 Tattoo: 413X DOB: 03/27/23

FLYING V TRANSFORMER
WILKS TRANSFORMER 2078X
WILKS RITO 70R ELLUNA 157
KB-FULL MEASURE C40
WILKS MAUD 75
WILKS IMPRESS MAUD 168

DAM TAG	75-9
2023 BIRTH WT	75
205 DAY ADJ WT	773
ADJ YW	1279

CED	BW	WW	YW	RADG	SC	MK	MARB	RE
+12	+0.2	+76	+117	+0.23	+0.74	+22	+0.65	+0.78
\$W	\$F	\$G	\$B	\$C				
+77	+93	+59	+152	+283				

60

WILKS TRANSFORMER 633X



REG: AAA20806674 Tattoo: 633X DOB: 04/12/23

FLYING V TRANSFORMER
WILKS TRANSFORMER 2078X
WILKS RITO 70R ELLUNA 157
KB-FULL MEASURE C40
WILKS BLACKCAP 55
WILKS WP BLACKCAP 80

DAM TAG	55-9
2023 BIRTH WT	70
205 DAY ADJ WT	920
ADJ YW	1515

CED	BW	WW	YW	RADG	SC	MK	MARB	RE
+9	-0.8	+79	+137	+0.29	+0.34	+29	+0.43	+0.41
\$W	\$F	\$G	\$B	\$C				
+78	+120	+36	+156	+264				

61

WILKS TRANSFORMER 683X

REG: AAA20806671 Tattoo: 683X DOB: 03/16/23

FLYING V TRANSFORMER
WILKS TRANSFORMER 2078X
WILKS RITO 70R ELLUNA 157
WILKS CONS BOY 2343
WILKS RITA ROSEBUD 163
WILKS TOTAL RITO ROSEBUD 181

DAM TAG	163-9
2023 BIRTH WT	80
205 DAY ADJ WT	787
ADJ YW	1440

CED	BW	WW	YW	RADG	SC	MK	MARB	RE
+1	+5.9	+78	+140	+0.30	+0.11	+17	+0.40	+0.53
\$W	\$F	\$G	\$B	\$C				
+45	+117	+39	+156	+243				

REFERENCE SIRE: WILKS BUBS 1439X

REG: AAA 19604452 TATTOO: 1439X DOB: 3/21/19

CED	BW	WW	YW	RADG	DMI	YH	SC	DOC
+4	+2.5	+63	+110	+26	+0.68	+6	+2.10	+15
.36	.64	.57	.37	.32	.32	.45	.37	.33
HP	CEM	MILK	MKH	MW	MH	SEN	MARB	RE
+15.1	+8	+31		+55	+30	-15	+87	+81
.24	.32	.35		.37	.40		.36	.36
\$W		\$F		\$G		\$B		
+63		+97		+67		+164		

BT CROSSOVER 758N
SILVEIRAS CONVERSION 8064
EXG SARAS DREAM S609 R 3
BUBS SOUTHERN CHARM AA31
CONNEALY STIMULUS 8419
HICKORY HILL ERICA 009
HICKORY HILL ERICA TA32
NICHOLS EXTRA K205
WILKES K205 BOY 17
LUCYS BOY BLACKCAP LADY 60
WILKS 17WK205 ELBARA 48
WILK'S GRID GIANT
WILKS 21P GRID ELBARA 55
WULTRA 43 ELBARA 32

62 WILKS BUBS 563X

REG: AAA20806661 TATTOO: 563X DOB: 03/18/23

BUBS SOUTHERN CHARM AA31
WILKS BUBS 1439X
WILKS 17WK205 ELBARA 48
BASIN PAYWEIGHT 1682
WILKS EDELLAMERE 827
WILKS 44YT EDELLAMERE 180

DAM TAG	82-7
2023 BIRTH WT	80
205 DAY ADJ WT	735
ADJ YW	1337

CED	BW	WW	YW	RADG	SC	MK	MARB	RE
-3	+4.1	+71	+124	+0.26	+1.62	+24	+0.41	+0.57
\$W		\$F		\$G		\$B		\$C
+59		+84		+40		+124		+240

63 WILKS BUBS 783X

REG: AAA20806662 TATTOO: 783X DOB: 03/16/23

BUBS SOUTHERN CHARM AA31
WILKS BUBS 1439X
WILKS 17WK205 ELBARA 48
SITZ TOP GAME 11244
WILKS ELBINA EXTRA 1107
WILKS SG ELBINA EXTRA 20

DAM TAG	110-7
2023 BIRTH WT	70
205 DAY ADJ WT	736
ADJ YW	1345

CED	BW	WW	YW	RADG	SC	MK	MARB	RE
+9	+0.4	+56	+102	+0.26	+1.17	+25	+0.75	+0.41
\$W		\$F		\$G		\$B		\$C
+57		+87		+53		+140		+246

REFERENCE SIRE: WILKS ENHANCE 80X

REG: AAA 19905538 TATTOO: 80X DOB: 2/26/20

CED	BW	WW	YW	RADG	DMI	YH	SC	DOC
+10	+0.9	+82	+143	+29	+1.56	+1.1	+1.12	+33
.37	.56	.49	.39	.34	.34	.46	.40	.36
HP	CEM	MILK	MKH	MW	MH	SEN	MARB	RE
+13.6	+9	+29		+94	+90	-34	+1.22	+57
.27	.32	.35		.39	.42		.38	.38
\$W		\$F		\$G		\$B		
+78		+104		+84		+188		

SYDGEN GOOGOL
SYDGEN EXCEED 3223
SYDGEN FOREVER LADY 1255
SYDGEN ENHANCE
SYDGEN LIBERTY GA 8627
SYDGEN RITA 2618
FOX RUN RITA 9308
KG SOLUTION 0018
DL SONIC 444
DL BARBARA 792
WILKS ELINA 18
WILKS MANDATE FOCUS
WILKS ELINA 178
WILKS NEUT 57P ELINA 85

64 WILKS ENHANCE 653X

REG: AAA20806673 TATTOO: 653X DOB: 04/09/23

SYDGEN ENHANCE
WILKS ENHANCE 80X
WILKS ELINA 18
BRUNS BLASTER
WILKS MISS GIANT 25
WILKS REV MISS GIANT 136

DAM TAG	25-8
2023 BIRTH WT	75
205 DAY ADJ WT	840
ADJ YW	1463

CED	BW	WW	YW	RADG	SC	MK	MARB	RE
+3	+3.7	+83	+153	+0.34	+1.24	+35	+0.67	+0.80
\$W		\$F		\$G		\$B		\$C
+75		+136		+58		+194		+317



REFERENCE SIRE: WILKS OUTRIGHT 889X

REG: AAA 19604380 TATTOO: 889X DOB: 3/27/19

CED	BW	WW	YW	RADG	DMI	YH	SC	DOC
+6	+1.4	+69	+121	+31	+0.60	+5	+0.97	+20
.35	.67	.60	.35	.31	.31	.45	.36	.31
HP	CEM	MILK	MKH	MW	MH	\$EN	MARB	RE
+4.0	+10	+20		+74	+30	-19	+3.7	+6.8
.21	.27	.31		.36	.39		.34	.34
\$W	\$F	\$G	\$B					
+60	+101	+42	+142					

K C F BENNETT ABSOLUTE
HAYNES OUTRIGHT 452
HAYNES ND 454 MISS 179
WILKS OUTRIGHT KING 126
SITZ UPWARD 711
WILKS SITZ3 MISS LANDMARK 127
WILKS LANDMERE OF VRD 61
BON VIEW NEW DESIGN 208
TC TOTAL 410
TC ERICA EILEEN 2047
WILKS TOTAL ELBINA 115
WOODHILL FORESIGHT
4SITE ELBINA 184
IDEAL 9225 ELBINA

65 WILKS OUTRIGHT 823X

REG: AAA20806663 Tattoo: 823X DOB: 03/14/23

WILKS OUTRIGHT KING 126X
WILKS OUTRIGHT 889X
WILKS TOTAL ELBINA 115
SITZ UP TREND 426Y
WILKS MARY JILT 987
MINFO MARY JILT 95

DAM TAG	98-7
2023 BIRTH WT	80
205 DAY ADJ WT	763
ADJ YW	1358

CED	BW	WW	YW	RADG	SC	MK	MARB	RE
-2	+4.0	+82	+136	+0.26	+0.64	+20	+0.56	+0.48
\$W	\$F	\$G	\$B	\$C				
+63	+110	+48	+158	+242				



REFERENCE SIRE: WILKS INERTIA 1980X

REG: AAA 19905544 TATTOO: 1980X DOB: 3/25/20

CED	BW	WW	YW	RADG	DMI	YH	SC	DOC
-1	+5.0	+83	+142	+27	+1.74	+1.0	+0.68	+19
.37	.51	.54	.38	.34	.34	.46	.39	.35
HP	CEM	MILK	MKH	MW	MH	\$EN	MARB	RE
+9.1	+8	+32		+99	+90	-38	+5.2	+6.6
.25	.32	.35		.38	.41		.38	.37
\$W	\$F	\$G	\$B					
+69	+126	+41	+167					

G A R PROGRESS
G A R MOMENTUM
G A R BIG EYE 1770
G A R INERTIA
G A R PROPHET
G A R PROPHET 2984
G A R DAYBREAK 1521
SITZ UPWARD 307R
SITZ UPWARD 11561
SITZ EVERELDA ENTENSE 3549
WILKS RITO ROSEBUD 116
TC TOTAL 410
WILKS TOTAL RITO ROSEBUD 181
EXACTO RITO ROSEBUD 44

66 WILKS INERTIA 353X

REG: AAA20806726 Tattoo: 353X DOB: 03/24/23

G A R INERTIA
WILKS INERTIA 1980X
WILKS RITO ROSEBUD 116
WILKS WAYLON 1765
WILKS MISS MARSHALL 66
WILKS CRED MARSHALL MARY 162

DAM TAG	66-9
2023 BIRTH WT	80
205 DAY ADJ WT	831
ADJ YW	1433

CED	BW	WW	YW	RADG	SC	MK	MARB	RE
+4	+2.8	+80	+137	+0.28	+0.55	+36	+0.94	+0.89
\$W	\$F	\$G	\$B	\$C				
+79	+105	+69	+175	+290				

67 WILKS INERTIA 583X

REG: AAA20806725 Tattoo: 583X DOB: 03/29/23

G A R INERTIA
WILKS INERTIA 1980X
WILKS RITO ROSEBUD 116
WILKS 55 YELLRITOR GUY 1803
WILKS BLACKCAP BARB 39
WILKS BLACKCAP BARB 77

DAM TAG	39-9
2023 BIRTH WT	80
205 DAY ADJ WT	844
ADJ YW	1446

CED	BW	WW	YW	RADG	SC	MK	MARB	RE
+2	+4.4	+75	+121	+0.24	-0.36	+43	+0.61	+0.84
\$W	\$F	\$G	\$B	\$C				
+79	+100	+51	+151	+258				

68

WILKS INERTIA 593X

REG: AAA20806727 Tattoo: 593X DOB: 03/24/23

G A R INERTIA
WILKS INERTIA 1980X
WILKS RITO ROSEBUD 116

DAM TAG 41-9

2023 BIRTH WT 75

WILKS ABSOLUTE 515
WILKS BLACKCAP BARB 46
WILKS TOTAL BLACKCAPBARB 178

205 DAY ADJ WT 861

ADJ YW 1507

CED	BW	WW	YW	RADG	SC	MK	MARB	RE
+6	+1.9	+86	+148	+0.30	+0.35	+29	+0.33	+0.89
\$W	\$F	\$G	\$B	\$C				
+80	+123	+36	+159	+271				



LOT #68

REFERENCE SIRE: WILKS SONIC 138X

REG: AAA 19300546 TATTOO: 138X DOB: 2/27/18

CED	BW	WW	YW	RADG	DMI	YH	SC	DOC
+6	+1.1	+92	+156	+31	+1.97	+7	+0.71	+26
.40	.63	.56	.38	.32	.32	.47	.39	.35
HP	CEM	MILK	MKH	MW	MH	\$EN	MARB	RE
+14.2	+5	+15		+139	+1.10	-49	+84	+1.11
.24	.32	.33		.38	.41		.36	.36
\$W	\$F	\$G	\$B					
+70	+118	+71	+189					

MOGCK SURE SHOT
KG SOLUTION 0018
KG RITO LADY 8724

DL SONIC 444
CONNEALY CONSENSUS 7229
DL BARBARA 792
DL BARBARA 1199

GAR-EGL PROTÉGÉ
BALDRIDGE WAYLON W34
BALDRIDGE BLACKCAP T163

WILKS EXTRA EBOREA 65
TC TOTAL 410
WILKS TOTAL EXTRA EBOREA 170
NEUTRON'S ELBAN EBOREA 52

69

WILKS SONIC 943X

REG: AAA20806731 Tattoo: 943X DOB: 03/16/23

DL SONIC 444
WILKS SONIC 138X
WILKS EXTRA EBOREA 65

DAM TAG 10-0

2023 BIRTH WT 85

WILKS ABSOLUTE 785
WILKS BLACKCAP ELBAN 100
WILKS BLACKCAP ELBAN 91

205 DAY ADJ WT 982

ADJ YW 1569

CED	BW	WW	YW	RADG	SC	MK	MARB	RE
-2	+5.6	+104	+180	+0.32	+1.28	+14	+0.87	+0.93
\$W	\$F	\$G	\$B	\$C				
+62	+115	+68	+183	+269				



LOT #69

70

WILKS SONIC 983X

REG: AAA20806733 Tattoo: 983X DOB: 03/13/23

DL SONIC 444
WILKS SONIC 138X
WILKS EXTRA EBOREA 65

DAM TAG 15-0

2023 BIRTH WT 70

SYDGEN ENHANCE
WILKS ELBAN LADY 150
WILKS ELBAN LADY 144

205 DAY ADJ WT 893

ADJ YW 1495

CED	BW	WW	YW	RADG	SC	MK	MARB	RE
+12	+0.1	+85	+148	+0.30	+1.44	+11	+0.66	+0.80
\$W	\$F	\$G	\$B	\$C				
+65	+106	+57	+163	+264				



LOT #70

71

WILKS SONIC 1043X

REG: AAA20806705 Tattoo: 1043X DOB: 03/23/23

DL SONIC 444
WILKS SONIC 138X DAM TAG 145-0
 WILKS EXTRA EBOREA 65 2023 BIRTH WT 75

BYERGO BLACK MAGIC 3348
WILKS ELLUNA 1450 205 DAY ADJ WT 816
 WILKS SG ELLUNA 23 ADJ YW 1345

CED	BW	WW	YW	RADG	SC	MK	MARB	RE
+0	+3.8	+89	+156	+0.32	+0.71	+16	+1.15	+1.03
\$W	\$F	\$G	\$B	\$C				
+62	+114	+85	+199	+302				

72

WILKS SONIC 1123X



REG: AAA20806704 Tattoo: 1123X DOB: 03/25/23

DL SONIC 444
WILKS SONIC 138X DAM TAG 24-0
 WILKS EXTRA EBOREA 65 2023 BIRTH WT 75

SYDGEN ENHANCE
WILKS DELUX ELINE 240 205 DAY ADJ WT 902
 WILKS DELUX ELINE 165 ADJ YW 1511

CED	BW	WW	YW	RADG	SC	MK	MARB	RE
+12	-0.2	+94	+168	+0.33	+2.15	+23	+1.03	+0.85
\$W	\$F	\$G	\$B	\$C				
+84	+103	+73	+176	+305				

REFERENCE SIRE: WILKS SONIC 308X

REG: AAA 19300560 TATTOO: 308X DOB: 3/4/18

CED	BW	WW	YW	RADG	DMI	YH	SC	DOC
+5	+2.5	+90	+147	+27	+1.69	+8	+1.74	+31
.40	.73	.67	.38	.32	.32	.47	.38	.33
HP	CEM	MILK	MKH	MW	MH	\$EN	MARB	RE
+15.9	+7	+15		+103	+90	-31	+50	+65
.22	.31	.34		.37	.40		.35	.35
\$W	\$F	\$G	\$B					
+70	+97	+47	+144					

MOGCK SURE SHOT
 KG SOLUTION 0018
 KG RITO LADY 8724

DL SONIC 444
 CONNEALY CONSENSUS 7229
 DL BARBARA 792
 DL BARBARA 1199

BALDRIDGE WAYLON W34
 WILKS WAYLON 258
 WILKS 112 STATS BLACKCAP 112

WILKS BLACKCAP BARB 96
 WILKES 338 GUY 30
 WILKS 30W338 BLACKCAP BARB64
 WILKS 114RYSTONE BARB 64

73

WILKS SONIC 933X

REG: AAA20806681 Tattoo: 933X DOB: 03/28/23

DL SONIC 444
WILKS SONIC 308X DAM TAG 36-0
 WILKS BLACKCAP BARB 96 2023 BIRTH WT 75

WILKS WAYLON 2145
WILKS BURGESS 360 205 DAY ADJ WT 919
 WILKS 18WK205 BURGESS 166 ADJ YW 1477

CED	BW	WW	YW	RADG	SC	MK	MARB	RE
-4	+5.8	+81	+133	+0.29	+1.49	+28	+0.48	+0.82
\$W	\$F	\$G	\$B	\$C				
+65	+98	+50	+148	+250				

74

WILKS SONIC 1083X

REG: AAA20806698 Tattoo: 1083X DOB: 03/25/23

DL SONIC 444
WILKS SONIC 308X DAM TAG 21-0
 WILKS BLACKCAP BARB 96 2023 BIRTH WT 75

WILKS WAYLON 165
WILKS EMPRESS 210 205 DAY ADJ WT 902
 WILKS EMPRESS 137 ADJ YW 1467

CED	BW	WW	YW	RADG	SC	MK	MARB	RE
+0	+4.5	+86	+148	+0.27	+0.97	+27	+0.60	+0.66
\$W	\$F	\$G	\$B	\$C				
+71	+99	+52	+151	+255				

75

WILKS SONIC 1093X

REG: AAA20806693 Tattoo: 1093X DOB: 03/29/23

DL SONIC 444
WILKS SONIC 308X DAM TAG 127-0
 WILKS BLACKCAP BARB 96 2023 BIRTH WT 85

BUBS SOUTHERN CHARM AA31
WILKS QUEEN MARY 1270 205 DAY ADJ WT 977
 WILKS SITZ159 QUEENMARY 171 ADJ YW 1505

CED	BW	WW	YW	RADG	SC	MK	MARB	RE
-9	+6.7	+89	+150	+0.32	+2.04	+31	+0.47	+0.89
\$W	\$F	\$G	\$B	\$C				
+64	+122	+49	+171	+262				

76

WILKS SONIC 1133X

REG: AAA20806689 Tattoo: 1133X DOB: 04/01/23

DL SONIC 444
WILKS SONIC 308X DAM TAG 83-0
 WILKS BLACKCAP BARB 96 2023 BIRTH WT 70

WILKS ABSOLUTE 395
WILKS BLACKCAP BARB 830 205 DAY ADJ WT 815
 WILKS BLACKCAP BARB 667 ADJ YW 1424

CED	BW	WW	YW	RADG	SC	MK	MARB	RE
+3	+4.0	+95	+162	+0.34	+2.63	+23	+0.22	+0.72
\$W	\$F	\$G	\$B	\$C				
+74	+113	+34	+148	+254				

77

WILKS SONIC 1163X

REG: AAA20806691 Tattoo: 1163X DOB: 03/23/23

DL SONIC 444
WILKS SONIC 308X
WILKS BLACKCAP BARB 96
BYERGO BLACK MAGIC 3348
WILKS ELBAN LADY 1230
WILKS ELBAN LADY 23

DAM TAG 123-0
2023 BIRTH WT 65
205 DAY ADJ WT 820
ADJ YW 1400

CED	BW	WW	YW	RADG	SC	MK	MARB	RE
+8	+2.3	+83	+137	+0.27	+1.17	+22	+0.61	+1.06
\$W	\$F	\$G	\$B	\$C				
+68	+112	+57	+168	+275				



New Offering!
TWO-YEAR-OLD REGISTERED ANGUS BULLS!

11 GREEN

WILKS BIGRADE 12X

REG: AAA 20537206 Tattoo: 12X DOB: 2/24/22

CASINO BOMBER N33
44 BIGRADE
44 RITA 6821
WILKS WAYLON EXTRA DUE 716X
WILKS LOVER 1670
WILKS 52WINF LOVER 15

DAM TAG 167-0
2022 BIRTH WT 70

CED	BW	WW	YW	RADG	SC	MK	MARB	RE
+6	+4.6	+87	+142	+25	+1.29	+25	+71	+83
\$W	\$F	\$G	\$B	\$C				
+73	+106	+57	+164	+284				

39 GREEN

WILKS GRENADE 1492X

REG: AAA 20538258 Tattoo: 1492X DOB: 3/15/22

CASINO BOMBER N33
EXAR GRENADE 9152B
EXAR MERLE 7441
WILKS IMPRESSION 2362
WILKS EDELLAMERE 1507
WILKS WP EDELLAMERE 70

DAM TAG 150-7
2022 BIRTH WT 80

CED	BW	WW	YW	RADG	SC	MK	MARB	RE
+0	+3.6	+79	+130	+24	+1.41	+27	+76	+61
\$W	\$F	\$G	\$B	\$C				
+71	+84	+59	+143	+259				

4 PURPLE

WILKS GRENADE 1712X

REG: AAA 20538302 Tattoo: 1712X DOB: 3/17/22

CASINO BOMBER N33
EXAR GRENADE 9152B
EXAR MERLE 7441
WILKES K205 DATELINE STUD 18
WILKS 18WK205 BESSIE 165
WILKS YSTONE 114R BESSIE 96

DAM TAG 165-3
2022 BIRTH WT 80

CED	BW	WW	YW	RADG	SC	MK	MARB	RE
+2	+3.4	+82	+137	+26	+73	+23	+33	+63
\$W	\$F	\$G	\$B	\$C				
+69	+91	+36	+127	+227				

54 GREEN

WILKS ICONIC 1742X

REG: AAA 20537169 Tattoo: 1742X DOB: 3/19/22

MUSGRAVE 316 STUNNER
DB ICONIC G95
DB MS DISCOVERY D13
QUAKER HILL RAMPAGE 0A36
WILKS EDELLAMERE 587
WILKS NS EDELLAMERE 28

DAM TAG 58-7
2022 BIRTH WT 75

CED	BW	WW	YW	RADG	SC	MK	MARB	RE
+9	+3	+72	+126	+28	+87	+21	+1.1	+36
\$W	\$F	\$G	\$B	\$C				
+65	+84	+73	+157	+244				

5 WILKS ICONIC 1682X ★ HB

PURPLE REG: AAA 20537156 Tattoo: 1682X DOB: 3/20/22

MUSGRAVE 316 STUNNER
DB ICONIC G95 DAM TAG 19-4
 DB MS DISCOVERY D13 2022 BIRTH WT 70

PA SAFEGUARD 021
WILKS SG LADY 19
 WILKS 18WK205 LADY 113

CED	BW	WW	YW	RADG	SC	MK	MARB	RE
+9	-6	+64	+112	+21	+1.02	+22	+1.57	+26
\$W	\$F	\$G	\$B	\$C				
+61	+77	+91	+168	+278				

7 WILKS SUMMATION 632X

PURPLE REG: AAA 20538314 Tattoo: 632X DOB: 3/10/22

K C F BENNETT CONSENT Y75
K C F BENNETT SUMMATION DAM TAG 76-3
 THOMAS PATRICIA 9705 2022 BIRTH WT 75

WILKES K205 DATELINE STUD 18
WILKS 18WK205 DOLLY 76
 WILKS INF 11R DOLLY 44

CED	BW	WW	YW	RADG	SC	MK	MARB	RE
+7	+2	+64	+130	+31	+1.06	+38	+5	+69
\$W	\$F	\$G	\$B	\$C				
+65	+118	+44	+163	+259				

14 WILKS 7WHT ENHANCE 482X

PURPLE REG: AAA 20543735 Tattoo: 482X DOB: 3/23/22

SYDGEN ENHANCE
WILKS ENHANCE 679X DAM TAG 57-8
 WILKS 24ORPRED EDELLA 184 2022 BIRTH WT 70

WILKS WAYLON 55
WILKS EBOREAMERE 57
 WILKS SG EBOREAMERE 1

CED	BW	WW	YW	RADG	SC	MK	MARB	RE
-1	+2	+68	+122	+28	+1.5	+28	+8.9	+64
\$W	\$F	\$G	\$B	\$C				
+62	+77	+69	+147	+235				

8 WILKS 31WHT BUBS 1662X ★ HB

PURPLE REG: AAA 20537150 Tattoo: 1662X DOB: 3/11/22

BUBS SOUTHERN CHARM AA31
WILKS BUBS 1439X DAM TAG 9-6
 WILKS 17WK205 ELBARA 48 2022 BIRTH WT 65

DEER VALLEY ALL IN
WILKS SHOSHONE 9
 WILKS INF SHOSHONE 30

CED	BW	WW	YW	RADG	SC	MK	MARB	RE
+7	+1	+61	+110	+24	+1.65	+24	+1.00	+86
\$W	\$F	\$G	\$B	\$C				
+60	+86	+76	+161	+279				

71 WILKS 69WHT OUTRIGHT 1892X

GREEN REG: AAA 20537197 Tattoo: 1892X DOB: 4/11/22

WILKS OUTRIGHT KING 126X
WILKS OUTRIGHT 889X DAM TAG 140-9
 WILKS TOTAL ELBINA 115 2022 BIRTH WT 85

WILKS WAYLON 1765
WILKS BURGESS 140
 WILKS 18WK205 BURGESS 166

CED	BW	WW	YW	RADG	SC	MK	MARB	RE
+2	+3.3	+73	+126	+28	+67	+22	+57	+53
\$W	\$F	\$G	\$B	\$C				
+60	+93	+49	+141	+236				

10 WILKS 69WHT OUTRIGHT 1082X

PURPLE REG: AAA 20537212 Tattoo: 1082X DOB: 3/17/22

WILKS OUTRIGHT KING 126X
WILKS OUTRIGHT 889X DAM TAG 189-3
 WILKS TOTAL ELBINA 115 2022 BIRTH WT 80

TC TOTAL 410
WILKS TOTAL MAUD 189
 WILKS CLASSY MAUD STRAT 162

CED	BW	WW	YW	RADG	SC	MK	MARB	RE
+5	+2.1	+75	+126	+27	+73	+24	+66	+84
\$W	\$F	\$G	\$B	\$C				
+68	+79	+61	+140	+228				

11 WILKS 69WHT OUTRIGHT 1852X

PURPLE REG: AAA 20537193 Tattoo: 1852X DOB: 3/20/22

WILKS OUTRIGHT KING 126X
WILKS OUTRIGHT 889X DAM TAG 127-9
 WILKS TOTAL ELBINA 115 2022 BIRTH WT 75

WILKS WAYLON 55
WILKS ELBINA 127
 WILKS PRED59W ELBINA 114

CED	BW	WW	YW	RADG	SC	MK	MARB	RE
+2	+3.2	+77	+130			+21		
\$W	\$F	\$G	\$B	\$C				
+57	+88							



WILKINSON

--- RANCH ---



Thank You
FOR ATTENDING OUR SALE!

WILKINSON

--- RANCH ---

*Bulls can be kept at the ranch until May 1, 2023 • Pay when you pick up your bulls
Registration papers available upon request • All bulls will be semen tested*

Mark Wilkinson
C) 605-203-0380

Dan Wilkinson
C) 605-203-0378

BULLS CAN BE SEEN AT THE FARM

Directions from DeSmet:

8 miles west • 3 miles south on 425th Ave. • 1/4 miles west on 211th St.

