



# Aircraft Wash Plan

For Airport Tenants and Users at Nashua Airport – Boire Field

NOVEMBER 2014



# Table of Contents

## I. **Executive Summary**

Objectives

Description of Environmental Concerns

Aircraft Washing Options

Best Management Practices (BMP's)

## II. **Appendices**

### **Appendix A – Figure 1**

Fig. 1, Designated Aircraft Wash Area

### **Appendix B – Approved Detergent Material Safety Data Sheet (MSDS)**

### **Appendix C – NHDES Registration/Permit**

## Objectives

---

This plan is designed to allow Nashua Airport tenants and users to wash their aircraft in an environmentally responsible way, and in accordance with the Airport's Stormwater Pollution Prevention Plan (SWPPP) using only products that are known to not cause harm to the environment. A nonhazardous wastewater discharge registration has been applied for from NHDES (New Hampshire Department of Environmental Services) and received to allow this activity under certain conditions which are prescribed herein.

## Description of Environmental Concerns

---

Nashua Airport – Boire Field is classified by the US EPA (Environmental Protection Agency) as an Industrial Facility. The Airport operates under a SWPPP to meet or exceed the requirements of the US EPA and NHDES with respect to pollution prevention. As an Industrial Facility, it is required that best management practices are in place to prevent the contamination or pollution of Stormwater. Stormwater can dissolve or carry pollutants far from their source and distribute them to many points along its path. Eliminating pollutants from stormwater improves general water quality for everyone. If eliminating pollutants is not possible, then reduction or treatment of pollutants is a prudent goal.

This Aircraft Wash Plan describes the best management practices and pollutant controls implemented or proposed to be implemented at the Airport to reduce or eliminate pollutants from stormwater resulted from aircraft washing activities. Individuals desiring to wash their aircraft on airport property must familiarize and follow all of the requirements of this document.

## Aircraft Washing Options

---

There are two (2) options available to wash an aircraft at Nashua Airport:

1. Wash the aircraft in the designated area shown on the attached Figure (Drawing No. Fig.1, Designated Aircraft Wash Area). Prior to washing aircraft in the designated area please contact the Airport Manager for permission. Prior approval from the Airport Manager is required. An approval form shall be completed by the Airport Manager which will include date and time of aircraft washing which will take into account weather conditions and airport operation schedule. The Airport Manager will keep a copy of the approval form in a file at the Airport Administration Office. The designated area shall be used only if the wastewater is not from power washing, steam cleaning, engine cleaning, or undercarriage cleaning. The aircraft shall not be washed with soaps or other products that contain regulated contaminants. Only approved detergents shall be used for washing the aircraft.

The approved detergent to wash aircraft at the Nashua Airport is Calla 301A Cleaner/Degreaser Concentrate. Calla 301A Cleaner/Degreaser Concentrate is approved by the EPA and the MSDS Sheet does not have any of the contaminants listed in the New Hampshire Code of Administrative Rules, Env-Or 600, Table 600-1.

The Airport does not have a source of water for use to wash aircraft. Aircraft owners shall supply their own water to the designated area shown on the attached Figure (Drawing No. Fig.1, Designated Aircraft Wash Area). The aircraft owner can use 5 gallon buckets to wash their aircraft or they can purchase a 55 gallon drum on a trailer for a water source. If a 55 gallon drum on a trailer is used, once the aircraft owner has completed the washing of the aircraft the 55 gallon drum and trailer shall be removed from the designated aircraft wash site and taken off-site.

Aircraft washing is limited to 30 aircraft a week on a first come, first serve basis. The Airport Manager reserves the right to shut down the designated aircraft wash area at any time.

2. The second option is to use towels/rags and the approved detergent (Calla 301A Cleaner/Degreaser Concentrate) in spray bottles. This method will not cause runoff since the spray will be applied directly onto the aircraft. With this method the aircraft can be washed in a hangar or on the apron. If washed on the apron the towels/rags and spray bottles shall be removed from the apron once the washing is complete. If further clarification is needed, please contact the Airport Manager.

## Best Management Practices (BMPs)

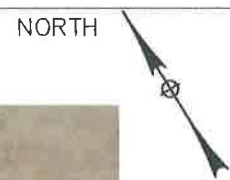
---

The Airport shall implement the following requirements and BMPs as part of this Aircraft Wash Plan:

- Stake/Mark out the designated aircraft wash areas.
- Provide a copy of this Aircraft Wash Plan to tenants and users
- Monitor aircraft washings to ensure this plan is being followed.
- Visually inspect the designated wash area monthly.
- All FOD shall be removed from the designated aircraft wash areas and placed into an approved container/dumpster.

# Appendices

## Appendix A – Figure 1



**DESIGNATED AIRCRAFT WASH AREA PLAN**

SCALE: 1"=40'

**LEGEND:**

- TAXILANE ☒
- DESIGNATED AIRCRAFT WASH AREA
- EX. PROPERTY LINE

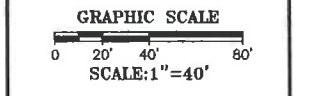
**NOTES:**

1. DESIGNATED AIRCRAFT WASH AREA POTENTIAL LOCATION TO BE APPROVED BY NHDES.
2. FOR ALLOWABLE DETERGENT TYPES PLEASE CONSULT WITH THE AIRPORT MANAGER.
3. WASH AIRCRAFT IN ACCORDANCE WITH THE AIRPORT RULES AND REGULATIONS, INCLUDING DAY AND TIME, WEATHER CONDITION, AIRPORT OPERATIONS SCHEDULE, ETC.
4. ACCESS TO DESIGNATED WASH AREA TO BE IN ACCORDANCE WITH THE TAXIING ROUTES ESTABLISHED BY THE AIRPORT MANAGER.
5. NO AIRCRAFT WASHING IS PERMITTED UNDER ANY CIRCUMSTANCES IN AREAS NOT DESIGNATED FOR SUCH USE. FINES MAY BE ASSESSED BY THE REGULATING AGENCIES.

**PLANNING SET**

DESIGNATED AIRCRAFT WASH AREA	OWNER BOIRE FIELD AIRPORT NASHUA MUNICIPAL AIRPORT NASHUA, NEW HAMPSHIRE
-------------------------------	---

NO.	DATE	DESCRIPTION	BY
PROJECT NO.		N/A	
DESIGNED BY		IR	
DRAWN BY		IR	
CHECKED BY		EWS	
DATE		07/07/2014	



SHEET TITLE

**DESIGNATED AIRCRAFT WASH AREA**

DRAWING NO.  
**FIG. 1**

## Appendix B – Approved Detergent Materials Safety Data Sheet (MSDS)



**Zip-Chem Products**  
**Calla 301A**  
**Material Safety Data Sheet**

**Section: 1 CHEMICAL PRODUCT AND COMPANY INFORMATION**

**Product Name:** Calla 301A **For Additional Product Information:** 1 (800) 648-2661

**Chemical Family:** DfE Approved Aqueous Cleaner

**Manufacturer:** Zip-Chem Products **In Emergency:** 1 (800) 424-9300  
 400 Jarvis Drive  
 Morgan Hill, CA 95037

**Section: 2 COMPOSITION/INFORMATION ON HAZARDOUS INGREDIENTS**

FOR EXPOSURE LIMITS SEE SECTION 8  
 FOR OTHER TOXICOLOGICAL INFORMATION SEE SECTION 11

**HAZARDOUS INGREDIENTS**

Descriptive Name	CAS Number	Percentage Range	Hazard Type per CFR 1910.1200	Exposure Limits	LD <sub>50</sub>	LC <sub>50</sub>	NTP, IARC, Or OSHA Carcinogen
Potassium Silicate	1312-76-1	<1%	Not Hazardous	None	Not Determined	Not Determined	No
Alcohol Ethoxylate	68991-48-0	<2%	Not Hazardous	None	>2000 mg/kg	Not Determined	No
Iminodisuccinic acid sodium salt	144538-83-0	<2%	Not Hazardous	None	>2000 mg/kg	Not Determined	No

**Section: 3 HAZARDS IDENTIFICATION**

**PHYSICAL HAZARDS:**

**ACUTE HEALTH EFFECTS:** Product may be irritating to skin and eyes.

**CHRONIC HEALTH EFFECTS:** Product may cause irritation to skin and eyes.

**IATA CLASSIFICATION:**

**HMIS RATINGS:**

Health: 2  
 Flammability: 0  
 Reactivity: 0  
 Protective Equipment: E

**Section: 4 FIRST AID MEASURES**

**EYES:** Flush immediately with water for 15 minutes and take to physician.

**SKIN:** Wash affected area with water.

**INGESTION:** Do not induce vomiting so as to avoid aspiration of material into the lungs. If conscious, drink large amounts of water and contact a physician.

**INHALATION:** Remove from exposure and restore breathing.

**Zip-Chem Products**  
Calla 301A  
Material Safety Data Sheet

**Section: 5 FIRE AND EXPLOSION HAZARDS**

**FLAMMABILITY DATA:**

FLAMMABLE/COMBUSTIBLE/PYROPHORIC: Not flammable  
FLASH POINT AND METHOD: None PMCC  
AUTOIGNITION TEMPERATURE: Not established

**FLAMMABLE LIMITS AT NORMAL TEMPERATURE AND PRESSURE (PERCENT VOLUME IN AIR):**

LEL: N/A                      UEL: N/A

**EXPLOSION DATA:**

SENSITIVITY TO MECHANICAL IMPACT: Not Sensitive  
SENSITIVITY TO STATIC DISCHARGE: Not Sensitive

EXTINGUISHING MEDIA: Foam, Alcohol Foam, CO<sub>2</sub>, Dry Chemical, Water Fog

FIRE FIGHTING TECHNIQUES AND COMMENTS: Use standard firefighting techniques to fight fires involving this material. The material itself is not flammable.

HAZARDOUS COMBUSTION PRODUCTS: Carbon dioxide, carbon monoxide

**Section: 6 ACCIDENTAL SPILL/RELEASE INFORMATION**

FOR ALL TRANSPORTATION ACCIDENTS CALL CHEMTREC AT 1-800-424-9300.

REPORTABLE QUANTITY: Not Applicable

**SPILL MITIGATION PROCEDURES:**

Stop source of spill as soon as possible and notify appropriate personnel. Burn around spill area to prevent spill from spreading. Ventilate area.

**AIR RELEASE:**

Vapors may be suppressed by use of water fog or spray. Contain all liquid for treatment or neutralization.

**WATER RELEASE:**

Material is soluble in water. Contain liquid for neutralization of the pH.

**LAND SPILL:**

Create a trench to contain materials. Spilled materials may be contained using sand, clay, earth or a commercial absorbent. Do not place materials back in their original container.

**SPILL RESIDUES:**

Dispose of per guidelines under section 13, DISPOSAL CONSIDERATIONS.

**PERSONNEL PROTECTION FOR EMERGENCY SPILL AND FIRE FIGHTING SITUATIONS:**

Additional protective clothing must be worn to prevent personal contact with this material. Those items include but are not limited to gloves, apron, and safety glasses.

**Section: 7 HANDLING AND STORAGE**

DO NOT TAKE INTERNALLY. AVOID CONTACT WITH EYES AND CLOTHING. UPON CONTACT WITH SKIN OR EYES WASH OFF WITH WATER.

STORAGE CONDITIONS:

**Zip-Chem Products**  
**Calla 301A**  
**Material Safety Data Sheet**

Store in a cool, dry, well-ventilated place.

STORE AT TEMPERATURES BELOW 120°F. DO NOT STORE OR USE NEAR HEAT, SPARKS, OR FLAMES. AVOID BREATHING VAPORS. VAPORS ARE HEAVIER THAN AIR AND WILL COLLECT IN LOW AREAS AND OTHER CONFINED AREAS.

**PRODUCT STABILITY AND COMPATIBILITY:**

SHELF LIFE LIMITATIONS: 36 months from date of shipment (DOS).

INCOMPATIBLE MATERIALS FOR STORAGE OR TRANSPORT: Strong oxidizing agents

INCOMPATIBLE MATERIALS FOR PACKAGING: N/A

<b>Section: 8 PREVENTIVE MEASURES</b>
---------------------------------------

**PERSONAL PROTECTION FOR ROUTINE USE OF THIS PRODUCT:**

RESPIRATORY PROTECTION: Breathing apparatus is not required for use of this product.

SKIN AND EYE PROTECTIVE EQUIPMENT: Impervious gloves are recommended to prevent skin contact. Safety glasses to prevent eye contact are recommended.

**ENGINEERING CONTROLS**

VENTILATION: Local or mechanical to keep Section II ingredients below their exposure limits.

**EQUIPMENT SPECIFICATIONS (WHEN APPLICABLE):**

RESPIRATOR TYPE: None required

PROTECTIVE CLOTHING TYPE: (This includes: gloves, boots, apron, protective suit):

Impervious gloves, safety glasses

**WASTE DISPOSAL:**

Spilled material collected in absorbent material should be transferred to steel disposal or recovery drums. If this product becomes a waste, it DOES NOT meet the criteria of a hazardous waste as defined under 40 CFR 261, in that it does not exhibit the characteristics of hazardous waste under Subpart D. If this product becomes a waste, it should be disposed of in accordance with local, state and federal regulations by incineration.

**Zip-Chem Products**  
Calla 301A  
Material Safety Data Sheet

**Section: 9 PHYSICAL AND CHEMICAL PROPERTIES**

PHYSICAL STATE(gas, liquid, solid): Liquid  
APPEARANCE: Clear  
ODOR: Slight odor  
FREEZING POINT: Not Determined  
BOILING RANGE: Not Determined  
DECOMPOSITION TEMPERATURE: Not Determined  
SPECIFIC GRAVITY (H2O=1): 1.0  
BULK DENSITY: 8.3 lbs/gal @ 70 Deg F  
pH @ 25 Deg C: 11.5  
VOC VAPOR PRESSURE @ 25 Deg C: 0  
SOLUBILITY IN WATER: Soluble  
VOLATILES, PERCENT BY WEIGHT: 90%  
EVAPORATION RATE: Slower than Ether  
VAPOR DENSITY: Heavier than air  
VOLATILE ORGANIC COMPOUND (VOC) G/L: 0 grams/Liter

**Section: 10 STABILITY AND REACTIVITY DATA**

CONDITIONS UNDER WHICH THIS PRODUCT MAY BE UNSTABLE:

MECHANICAL SHOCK OR IMPACT: No  
ELECTRICAL (STATIC) DISCHARGE: No  
HAZARDOUS POLYMERIZATION: Will Not Occur  
INCOMPATIBLE MATERIALS: Strong oxidizing agents.  
CONDITIONS OF REACTIVITY: None known  
HAZARDOUS DECOMPOSITION PRODUCTS: Carbon dioxide, carbon monoxide

**Zip-Chem Products**  
**Calla 301A**  
**Material Safety Data Sheet**

**Section: 11 TOXICOLOGICAL PROPERTIES**

WARNING STATEMENTS AND WARNING PROPERTIES:  
 DO NOT TAKE INTERNALLY.

SIGNS, SYMPTOMS AND EFFECTS OF EXPOSURE

INHALATION

None known

SKIN

May cause irritation.

EYE

May cause irritation.

INGESTION

ACUTE: May cause nausea or vomiting.

CHRONIC: If large quantities are swallowed, do not induce vomiting as it might cause aspiration of vomitus into the lungs. Drink lots of water and see physician.

MEDICAL CONDITIONS AGGRAVATED BY EXPOSURE: None known.

INTERACTIONS WITH OTHER CHEMICALS THAT ENHANCE TOXICITY: None Known

ACUTE TARGET ORGAN TOXICITY: No organs known to be damaged from exposure to this product.

CHRONIC TARGET ORGAN TOXICITY: There are no known effects from repeated exposure.

REPRODUCTIVE AND DEVELOPMENTAL TOXICITY: There are no known or reported effects on reproductive function or fetal development.

CARCINOGENICITY: NTP? NO IARC MONOGRAPHS? NO OSHA REGULATED? NO

MUTAGENICITY: This product is not known to be mutagenic.

EXPOSURE LIMITS: Not Determined

**Section: 12 ECOLOGICAL INFORMATION**

AQUATIC TOXICITY: None known or reported.

**Section: 13 DISPOSAL CONSIDERATIONS**

Spilled material collected in absorbent material should be transferred to steel disposal or recovery drums.

If this product becomes a waste, it DOES NOT meet the criteria of a hazardous waste as defined under 40 CFR 261, in that it does not exhibit the characteristics of hazardous waste under Subpart D.

If this product becomes a waste, it should be disposed of in accordance with local, state and federal regulations by incineration.

**Section: 14 TRANSPORT INFORMATION**

DOT SHIPPING NAME: DOT Non-Regulated (Soap)

DOT HAZARD CLASS: None

DOT PACKING GROUP: None

DOT REPORTABLE QUANTITY: None

**Section: 15 REGULATORY INFORMATION**

INTERNATIONAL

**Zip-Chem Products**  
**Calla 301A**  
**Material Safety Data Sheet**

All components of this product are listed on the following inventories: MITI (Japan) EINECS (EEC) DSL (Canada).

**FEDERAL**

**TOXIC SUBSTANCES CONTROL ACT (TSCA):**

The components of this product are listed on the TSCA inventory.

**SUPERFUND AMENDMENTS AND REAUTHORIZATION ACT TITLE III (SARA):**

**Section 302/304**

Requires emergency planning based on 'Threshold Planning Quantities' (TPQs), and release reporting based on Reportable Quantities (RQs) of 'Extremely Hazardous Substances' (EHS) listed in Appendix A of 40 CFR 355. There are no components of this material with known CAS numbers that are on the EHS list.

**Section 311 & 312**

Based upon the available information, this material and/or components is classified as a health and/or physical hazards according to Section 311 & 312:

Descriptive Name	CAS Number	Percentage Range	Hazard Type per CFR 1910.1200	Exposure Limits	LD <sub>50</sub>	LC <sub>50</sub>	NTP, IARC, Or OSHA Carcinogen
None							

**Section 313**

This material does not contain chemicals with known CAS numbers subject to the reporting requirements of SARA Title III, Section 313 and 40 CFR 372:

**Comprehensive Environmental Response, Compensation, and Liability Act (CERCLA)**

This material does not contain chemical(s) with known CAS numbers classified as hazardous substances subject to the reporting requirements of CERCLA (40 CFR 302) and to the release reporting requirements of SARA (Section 302) based on reportable quantities (RQs):

**OSHA Regulations**

'Chemical-specific' U. S. Occupational Safety and Health Administration (OSHA) regulations (1910.1002 to 1910.1050) presented under 29 CFR 1910 do not apply to this material or its components.

**Other EPA Regulations**

No additional information available.

**Zip-Chem Products**  
**Calla 301A**  
**Material Safety Data Sheet**

**State****California Safe Drinking Water and Toxic Enforcement Act of 1988- Proposition 65**

This material is not known to contain any chemicals currently listed as carcinogens or reproductive toxins under California Proposition 65 at levels that would be subject to the proposition

**California South Coast Air Quality Management District (SCAQMD) Rule 443.1 (VOC's)**

A Volatile Organic Compound (VOC) is any volatile compound of carbon excluding methane, carbon monoxide, carbonic acid, metallic carbides or carbonates, ammonium carbonate, 1,1,1-trichloroethane, methylene chloride, FC-23, CFC-113, CFC-12, CFC-11, CFC-22, CFC-114, and CFC-115. By this definition, this is a VOC material.

**Massachusetts Right to Know Substance List (MSL) [105 CMR 670.000]**

Hazardous Substances (MSL-HS) on the MSL must be identified when present in materials at levels greater than state specified criterion. The criterion is:  $\geq 1\%$ . Components with CAS numbers present in this material at a level which could require reporting under the statute are:

ChemicalCAS Number

Extraordinarily Hazardous Substances (MSL-EHS) on the MSL must be identified when present in materials at levels greater than state specified criterion. The criterion is  $\geq 0.0001\%$ . There are no materials present that could require reporting under this statute.

**Pennsylvania Right to Know Hazardous Substance List**

Hazardous Substances (PA-HS) must be identified when present in materials at levels greater than the state specified criterion. The criterion is  $\geq 1\%$ . Components with CAS numbers present in this material at a level that could require reporting under the statute are:

ChemicalCAS Number**Section: 16 PREPARATION INFORMATION****REVISION INFORMATION:**

PREPARED BY:

Periodic review

APPROVAL DATE:

J Smith

SUPERSEDES:

3/28/12

3/2/10

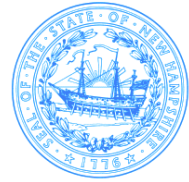
This information is furnished without warranty, expressed or implied, except that it is accurate to the best knowledge of Zip-Chem Products Company. The data in this sheet is related only to the specific material designated herein. Zip-Chem Products Company assumes no legal responsibility for use or reliance upon these data.

## Appendix C – NHDES Registration/Permit





STATE OF NEW HAMPSHIRE  
 DEPARTMENT OF ENVIRONMENTAL SERVICES  
 WATER DIVISION  
 29 HAZEN DRIVE, PO BOX 95  
 CONCORD, NEW HAMPSHIRE 03302-0095  
 (603) 271-2858



## REGISTRATION AND NOTIFICATION FORM FOR FLOOR DRAINS AND DISCHARGES TO GROUNDWATER

### Facility Information

Facility Name: City of Nashua  
 Address: 229 Main Street, PO Box 2019  
 Property Deed Reference Book: 932 Page: 199 Tax Map: E Lot # 60  
 City: Nashua State: NH Zip: 03061

### Facility Owner Information

Owner Name: City of Nashua Phone Number: (603) 882 - 0661  
 Mailing Address: 229 Main Street, PO Box 2019  
 City: Nashua State: NH Zip: 03061

### Property Owner Information (complete only if different from facility owner)

Owner Name: \_\_\_\_\_ Phone Number: ( ) -  
 Mailing Address: \_\_\_\_\_  
 City: \_\_\_\_\_ State: \_\_\_\_\_ Zip: \_\_\_\_\_

### Facility Operator's Information (complete only if different from facility owner)

Owner Name: Stephen R. Bourque Phone Number: (603) 882 - 0661  
 Mailing Address: 93 Perimeter Road  
 City: Nashua State: NH Zip: 03063

### Contact Person Information (complete only if different from facility owner)

Owner Name: Stephen R. Bourque Phone Number: (603) 882 - 0661  
 Mailing Address: 93 Perimeter Road  
 City: Nashua State: NH Zip: 03063

**Application for Discharge of Non-Domestic Wastewater** - complete the following page if your wastewater does *not* contain regulated contaminants and (if a floor drain) you do *not* store or use regulated contaminants in the area served by the drain.

Please provide a complete description of the facility and type of waste or wastewater handled at the facility served by the floor drain or other non-domestic wastewater discharge (include Locust map (i.e. USGS map):  
See attached Facility Description. Also see attached USGS Map and Figure FIG.1

Please describe the wastewater characteristics, including analytical results if available: \_\_\_\_\_  
Dirt and dust on aircrafts and approved washing detergent. See attached MSDS sheet for washing detergent analytical results.

Please describe the materials and products used at the facility which may be included in the wastewater (include material safety data sheets as required in 29 CFR Chapter 1910 Part 1200 for all products that may be constituents of the discharge): See attached MSDS sheet for approved washing detergent.  
The approved washing detergent name is Calla 301A, Zip-Chem Products.

Please describe the disposal method (how the wastewater is discharged and where, including sketch of any infiltration structures, and/or dimensions of any injection well proposed to be used): See Figure FIG.1 for wastewater discharge location. The approved washing detergents, dirt and dust will sheet flow in grass area.  
Please provide the discharge rate (gallons per minute) or discharge volume (gallons per day), and a schedule for periodic discharges: Discharge volume: 50 gallons per aircraft with less than thirty (30) aircraft per week.

**Floor Drain Registration** - Complete when you have a floor drain(s). I intend to (check one):

- Eliminate regulated contaminants from the wastewater or (if a floor drain) eliminate regulated contaminants from the area served by the floor drain.
- I will complete the *Discharge Well and Floor Drain Pre-Closure Notification Form* for closing the floor drain(s) (when drain is closed, send verification of closure with date and photos to DES).
- Connect the drain or discharge line to municipal sanitary sewer in accordance with the DES and local regulations by \_\_\_\_\_ (date).
- Connect drains to a registered holding tank which meets DES requirements (See DES fact sheet, Holding Tanks for Floor Drains, and file Holding Tank Registration form) by \_\_\_\_\_ (date)

**Vehicle Dust and Salt Rinsing** - Additional information if you are registering wastewater generated during dust and salt wash and rinse which infiltrates into the ground)

- a. Submit a plan of the site including structures, drainage, wetlands, location of rinsing activities, holding tank(s) etc.
- b. Submit a description of the activities including rinse and/or wash equipment, vehicle types, wash frequency, etc.
- c. Conduct all site activities using Best Management Practices (Env-Wq 421)
- d. Describe where the facility conducts steam cleaning, high power washing of undercarriages, engines, and other potential vehicle contaminants and the disposal method of this contaminated wastewater:  
\_\_\_\_\_  
\_\_\_\_\_

**To the best of my knowledge, the information I have provided on this form is true and correct. I will notify DES if I do not act according to the intentions I have stated on this form.**

\_\_\_\_\_  
Signature of Facility Owner

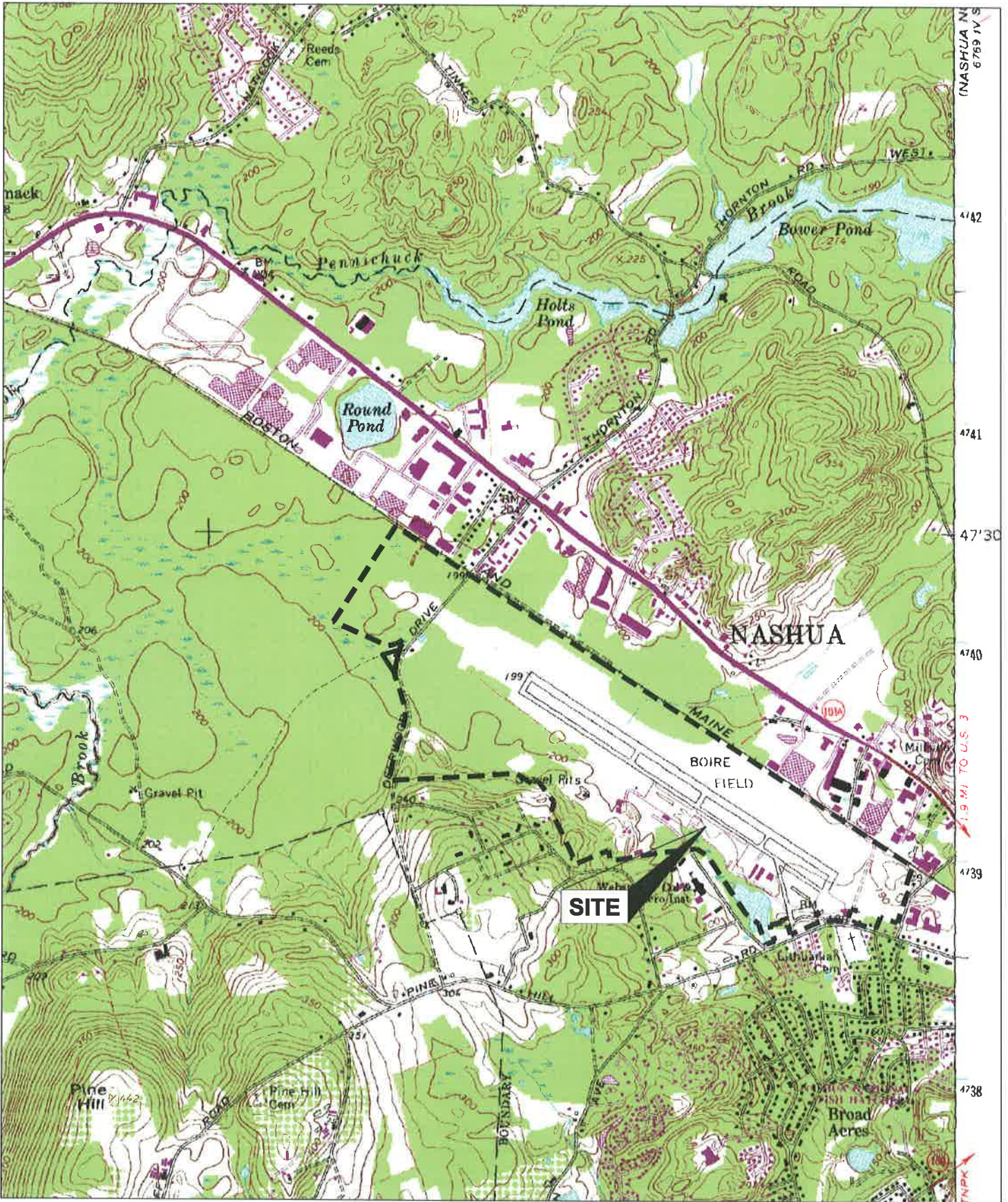
\_\_\_\_\_  
Date Signed

## **FACILITY DESCRIPTION**

This facility is an Airport (Nashua Municipal Airport), owned by the City of Nashua, New Hampshire, and overseen by the Nashua Airport Authority. The City of Nashua is located in southern Hillsborough County, New Hampshire. The Airport is covered under the Stormwater Pollution Prevention Plan (SWPPP) as outlined in the EPA's Multi-Sector General Permit for Stormwater Discharges Associated with Industrial Activity (MSGP), section Subpart S – Sector S – Air Transportation.

The Airport is situated approximately 3 miles north-west of downtown Nashua. It is located just off of NH Route 3, locally known as the Everett Turnpike, a major north-south arterial connecting the City to Interstate 495 in Massachusetts. The Airport is a large general aviation airport serving mostly private pilots and business aircraft. It is comprised of 390± acres set at approximately 200 feet above mean sea level. Approximately 23% of the Airport area is covered by impervious surfaces.

The Airport is proposing to have a designated aircraft wash area in a grassed area. Approved detergents will be used on Airport Property to wash aircrafts of dirt and dust. See attached USGS Map and Figure FIG.1.



**USGS Map - South Merrimack Quadrangle  
New Hampshire - Hillsboro County  
7.5 Minute Series (Topographic)  
Scale 1:24,000 (1"=2,000')**

# Calla 301A DfE Approved

## Description

Calla 301A is a uniquely formulated all purpose, heavy duty cleaner and degreasing compound that efficiently removes grease, oils, carbon, hydraulic fluid and dirt, as well as many soils which resist other cleaners. It has been designed for the environment and has been approved by the US EPA DfE program. It is nonflammable, biodegradable, has no irritating vapors and contains no harmful concentrations of phenols, chromates or chlorinated solvents. Calla 301A is noncorrosive and will not pit, stain or attack aluminum alloys, magnesium, copper, steel or other metals. It will not injure acrylic paint or other paints used on equipment, machines or autos when used as directed. It will not damage wiring on motors or acrylic base plastics. Calla 301A rinses easily and leaves no residue or stain, even if allowed to completely dry on the surface.

## Application

Calla 301A can be used at different dilutions depending upon the amount of soil and grease that needs to be removed. Typical dilutions are 20 to 1. For stubborn soils, an concentration of 10:1 is typically used. Heavily soiled areas may need greater concentrations

## Physical Properties

- Appearance: Clear amber liquid
- Flash Point: None
- Specific Gravity: 1.0
- Density (LB/GL): 8.33
- VOC: 0 grams/liter
- Boiling Point: 212°F
- Odor: None

## MilSpec

## Other

DfE Approved

## Features

- DfE Approved
- No Solvents
- Non-Toxic Biodegradable
- Non-Flammable
- Conforms to AMS 1526C, AMS 1550B, Boeing CSD-1, and D6-17487
- Safe on Aluminum, Magnesium and all structural metal.
- Safe on all quality paints, primers and acrylic plastics.

## Specifications

## Packaging

Gallons, 5 gallons, drums  
Special packaging upon request

## Commercial Specifications

CSD-1, D6-17487, AMS-1526A, AMS-1550A