

Light of Life

AUGUST 2022

LUTHERAN WORLD RELIEF

We are collecting items to make Personal Care kits and School Kits for Lutheran World Relief. These kits get sent all over the world, including Ukraine, along with the quilts that the women have been making.

Items needed are:

Personal Care: one light weight bath size towel, 2 bars of bath soap, 1 metal nail clippers, 1 sturdy comb, 1 adult size toothbrush in original package

School Kits: 4-70 sheet notebooks, 1 blunt scissor, 1-2 1/2 inch eraser, 1 pencil sharpener, 1 30cm ruler, 5 black or blue ballpoint pens, 5 unsharpened #2 pencils, 1 box 16-24 crayons.



If you would prefer to donate money, Sharon Hughes is willing to do the shopping for you. Donations can be placed in the offering plate marked for LWR or given to Sharon.

LEFSE—A ROLLING GOOD TIME

Starting September 13, each Tuesday and Thursday in September until October 18 we'll be in the kitchen rolling out this Norwegian delicacy. Rollers start at 8am and the bakers get to sleep in and start at 8:30am. No experience is needed! Join us for fun and fellowship.



GARAGE SALE-THANK YOU!!!

Thanks to everyone who helped with this year's garage sale. Thanks to everyone who donated items! It takes many hands to help price items, prepare the food for the lunch, help serve, help the day of the sale, help clean up afterwards, etc. The BLCW made \$1584.10. These funds will be used to support projects around the church. Ideas at this time include, blinds for the windows in the narthex, banners for the sanctuary and a door for the window opening in the kitchen.

OUR STAFF

Interim Pastor

Julie Krahn,
608-577-9608
jakrahn.1230@gmail.com

Interim Administrative Secretary

Mary TeWinkel, 608-244-8486
burkelutheran@att.net

Maintenance Engineer

Dave Wisner

BURKE LUTHERAN CHURCH

5720 Portage Rd / Madison, WI 53718
608-244-8486 / burkelutheran@att.net
www.burkelutheran.org

RALLY SUNDAY SUNDAY, SEPTEMBER 11

Save the Date! Please plan on joining us for a special worship service as we kick off a new year. More details to come in the September issue of the Light of Life.

CHURCH DOORS

If you are the last one to leave the church please be sure that the front door locks behind you. The door does not always latch if just left to close on it's own. Just take a second to give it a quick check after closing. Recently we have found the door open in the morning. Thanks!

A MESSAGE FROM PASTOR JULIE.....



No Matter

I love to visit other congregations when I'm not leading worship myself. Whenever the occasion arises, I relish the occasion to receive some word of grace spoken differently through a different voice or experience something innovative to try back home. Recently I received this tidbit. Every week the pastor gives this reminder, "We are the perfect church," and the people respond, "for imperfect people." So true. So very true.

Christ's church is nothing, if not a collection of imperfect people – young and old, rich or poor, lay and ordained. Gathered are all the imperfect souls in need of the unconditional love and acceptance of Jesus. No matter where you come from or where you are going, you are welcome here. No matter what you believe or doubt, no matter what you have or don't have, no matter what you are feeling or not feeling, this is the perfect church for imperfect people. No matter your color or creed, age, sexual orientation, or any such category you use to label people, this is a welcome place for all to hear about this amazing God who calls you by name.

So this is the perfect place to serve our world and one another. It's the perfect place to feed the hungry, shelter the homeless, clothe the naked, speak out for justice and stand for equality.

It's the perfect place to invite those of all faiths or no faith at all. It's the perfect place to invite those who are needy or secure, crabby or grateful, because the unconditional love of Christ is for all regardless of any imperfections you might see or those you keep hidden. So invite all the imperfect people you know and they will find the perfect church here for them.

A Heartfelt Thank YOU!

Thank you for your generosity during our Christmas in July event! Your purchases of olive wood carvings help the Palestinian artisans more than you can imagine. Our siblings in the Holy Land overcome so much because of the occupation and your support is very much appreciated! I can't thank you enough!

Pastor's Contact Information

Pastor Julie Krahn

Cell – 608-577-9608

Email – jakrahn.1230@gmail.com

Pastor's Sabbath day – Fridays

PRAYER CONCERNS

During the month of July, we have remembered the following individuals in our Sunday prayers:

Lisa Thompson	Mark Gehrke	Diane McFarlin
Larry Dean	Virginia Steward	Lucy Wisner
Linda Truitt	Sandy Weber	
Family & Friends of Josephine Pederson		

We apologize if we have missed anyone, it was not intentional



FOOD PANTRY

August's focus is on "Boxed Dinners": Hamburger Helper, rice mixes, noodle mixes, etc. Please place your non-perishable goods in the 'Donations' basket in the Narthex & it will be delivered to the pantry.



MEN'S BREAKFAST

The next Men's Breakfast is Wednesday, August 10 at Gus' Diner, Hwy 19, Sun Prairie, at 9:00am. Stop in for a cup of joe, a hearty breakfast and connect with brothers in Christ.



BIRTHDAY LUNCH

All women are invited to join in for fellowship on Wednesday August 17, noon. We will be going to Rex's Inn Keeper in Waunakee.



ONE YEAR TO LIVE-MEN'S RETREAT

SEPTEMBER 23-25, 2022

MacKenzie Environmental Education Center
W7303 County Road CS & Q - Poynette, WI

Sign up by August 23 to receive a \$25 discount. Register today-space is limited. Call or text Paul Beckman (608-279-0744) if you have questions.

LUTHERDALE FEST QUILT AUCTION

AUGUST 13, 8:00AM TO 4:00PM

Please set your calendars and join Lutherdale for a day full of food concessions, fresh baked goods, crafts, fabric sale, pontoon rides on the lake, and of course our LIVE AUCTION! Live Auction begins at 10am. Featuring over 250 quilts of all sizes, made and donated by many talented and dedicated quilters. It all goes down at Lutherdale, N7891 US Hwy 12 Elkhorn, WI.



DINNERS
AT THE **LAKE**

Served 4:00-7:00pm

Lutherdale, N7891 US
Hwy 12 Elkhorn, WI

Friday, August 12th

QUILT FEST FISH FRY

2 pieces Battered or Baked Cod, Roasted Red Potatoes, Seasonal Vegetable, Mac & Cheese, Creamy Cole Slaw, Rye Bread, and a sweet treat.

Adults \$16, Children (10 & Under) \$8.

You will be able to preview quilts, bid on silent auction items, shop in the gift gallery and more on Friday evening.

**I Tried
Lutefisk Twice!**

(Once going down and
another coming back up)

LIGHT OF LIFE & SUNDAY BULLETIN ARTICLES

If you have news you'd like to see in the Sunday bulletin announcements and/or Light of Life newsletter:

1. Email your submissions to burkelutheran@att.net (please indicate in the subject line whether it is for the bulletin, LOL or both), or
2. Mail to church, 5720 Portage Rd, Madison, WI 53718, or 3. Turn it into the church office with Attn: Mary

BULLETIN DEADLINE: Noon on Wednesdays

LIGHT OF LIFE DEADLINE: 15th of the month

Youth & Kids Corner

Confirmation Class



CONFIRMATION CLASSES FORMING

Classes will begin in September. If you know of someone in 7-8 grader that wants to participate please contact Pastor Julie.

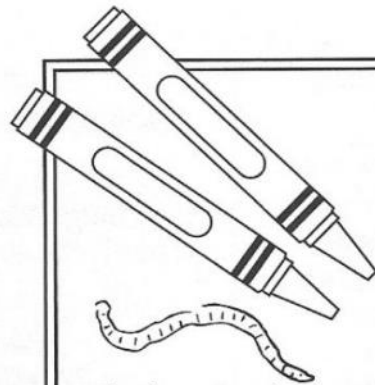


Rally Sunday is September 11. Plan to attend to help kick off the new year.

Anyone interested in helping with Sunday School should contact David Hanson from the Teach Board.



"I slept in church because I'm striving to be more like God, and on the seventh day He rested."



Bugs in the Bible



Whether at a picnic, on the beach or playing outdoors, it seems like we're always joined by uninvited guests – bugs!

Bugs and other little creatures are mentioned in the Bible.



Fill in the blanks with the little creatures mentioned in each verse.
Circle them in the puzzle below.

Proverbs 6:6 _____

Exodus 16:20 _____

Psalms 78:45 _____

1 Sam. 24:14 _____

Matt. 23:24 _____

Isaiah 50:9 _____

Judges 14:8 _____

Isaiah 59:5 _____

Acts 12:23 _____

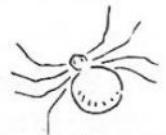
Leviticus 11:22 _____

Leviticus 11:22 _____

Leviticus 11:22 _____

Leviticus 11:22 _____

Deuteronomy 7:20 _____



M	O	T	H	S	G	N	A	T	B	H
A	N	T	A	L	L	C	H	P	E	O
G	R	A	S	S	H	O	P	P	E	R
G	F	C	R	I	C	K	E	T	S	N
O	L	S	P	I	D	E	R	S	B	E
T	E	C	L	O	C	U	S	T	D	T
S	A	E	F	K	A	T	Y	D	I	D
G	F	L	I	E	S	W	O	R	M	S

Answer: ant, flies, gnat, bees, worms, locust, grasshopper, hornet, maggots, flea, moths, spider, katydid, cricket

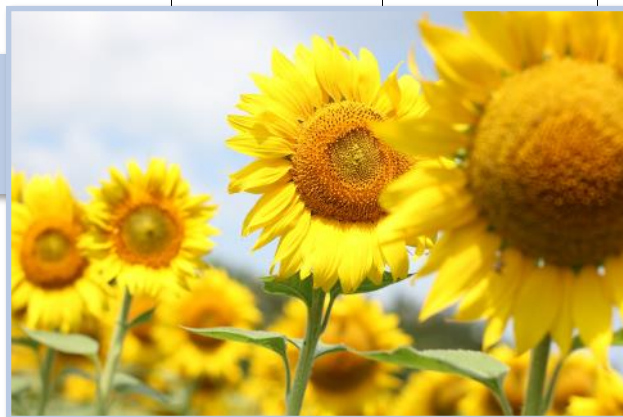
AUGUST CALENDAR

Sun	Mon	Tue	Wed	Thu	Fri	Sat
	1	2	3	4	5	6
7 Worship, 9am	8	9 Council Meeting, 6:30pm	10 Quilting, 9am Men's Breakfast, 9am Bible Study, 1:30pm	11	12 	13 Quilt Fest, Lutherdale
14 Worship, 9am	15	16	17 Quilting, 9am Birthday Lunch, noon Bible Study, 1:30pm	18	19 	20
21 Old Fashion Hymn Sing with Worship, 9am	22 Preach Board, 9am	23	24 Quilting, 9am Bible Study, 1:30pm	25 	26	27
28 Anniversary Worship, 9am	29	30	31 Quilting, 9am Bible Study, 1:30pm			

Save the Dates:

September 11
September 13
September 23-25

Rally Sunday
Lefse Making starts, Tuesdays & Thursdays
Men's Retreat



Happy Birthday!

Aug 4 Aiden Brown
Aug 7 Dave Weinberger, Jr.
Susan Weinberger
Aug 8 David Peterson
Aug 11 Darin Runge
Aug 12 Elias Kittleson
Virginia Steward
Aug 15 Pam Ekern
Aug 16 Phil Paul
Aug 17 Kelly Lietz
Aug 17 Jacob Hanson
Aug 19 Kristine Patzer
Nolan Proebstle

Aug 20 Carter Truitt
Dave Weinberger
Aug 21 Jenny Brown
.Connie Hauge
Aug 24 Dan Hanson
Aug 26 Chase Peterson
Danni Queiser
Steve Weinberger
Kjersten Proebstle
Aug 27 Stephen Bosben
Aug 28 Kurt Kalhagen
Aug 29 Alan Mascari
Aug 30 Jeannette Gehrke

Happy Anniversary!

Linda & Tom Hanson, August 7
Linda & John Schramer, August 12
Lori & Robert Kalhagen, August 19
June & Richard Chadwick, August 21
Carrie & Kirk Kruse, August 26
Sandra & Rick Brandon, August 28
Deb & Lon Buss, August 29
Dianne & Randy Copenhefer, August 29



We apologize if we have missed anyone, it was not intentional.

AUGUST WORSHIP LEADERS...



	August 7 9:00am Service	August 14 9:00am Service	August 21 9:00am Service	August 28 9:00am Service
Organist/Pianist	Gloria Lundquist	Gloria Lundquist	Susie Kittel Moore	Susie Kittel Moore
Music Leader	Dave Wisner	Dave Wisner	Chris Grefe	Dave Wisner
Music Leader	Chris Grefe	Chris Grefe	Dave Wisner	Chris Grefe
Communion Assistant	Julie Clark	Sharon Hughes		Mary TeWinkel
Communion Prep	Gloria Lundquist	Mary TeWinkel		Gloria Lundquist
Lay Reader	Tim Wachs	Barb Hennings	Sharon Hughes	Cheryl Beckman
Ushers	Bob Lenzendorf	Roger Kittleson Rick Brandon	Chris & Janeen Otis	Karl Patzer David Hanson
Coffee Hour	Donuts	Donuts	Donuts	Potluck
Counters	Gloria Lundquist Deb Brown	Linda Hughes Mary TeWinkel	Linda Hughes Mary TeWinkel	Sharon Hughes Jan Peterson

BEAUTY OF OUR CHURCH

We are fortunate at Burke to have all the wonders of nature around us. Here are some recent sightings of a doe and 2 fawns and our nest of barn swallows. The swallows are close to being ready to take flight.



MEMORIES!

It was 3 years ago (2019) on July 7th that we meet to break ground for our construction project. Pastor Rob led the congregation in a blessing ceremony. "We give thanks, O God, as we dedicate this land to your glory and praise. Grant us faith to know your gracious purpose in all things, give us joy in them, and lead us to the building up of your kingdom; through your Son, Jesus Christ, our Savior and Lord, who lives and reigns with you and the Holy Spirit, one God, now and forever. Amen." The congregation then sang *Here I Am Lord* and shovels broke ground. We have come a long way!

