

# half steps and enharmonic equivalents ANSWERS



Enharmonic Equivalents share the same sound but have *two different* letter names.

Refer to the keyboard below.

Each black key on the keyboard has *2 names* (e.g. C# = Db; Bb = A#) but *share the same sound*. Also, the white half step notes (E F and B C) each has an enharmonic equivalent; ex. E = Fb; F = E#; B = Cb; C = B#

## Exercises:

1. Write the enharmonic equivalents in the boxes on the keyboard. Check your work.
2. Write the enharmonic equivalent beside each letter name. Check your work.

C# =                      Db =

D# =                      Eb =

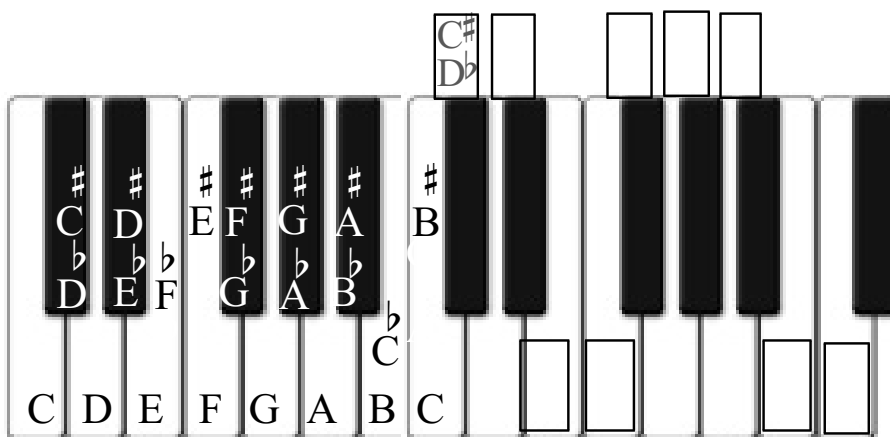
E# =                      Fb =

F# =                      Gb =

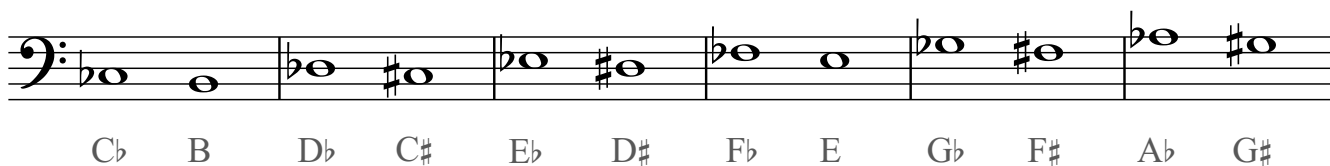
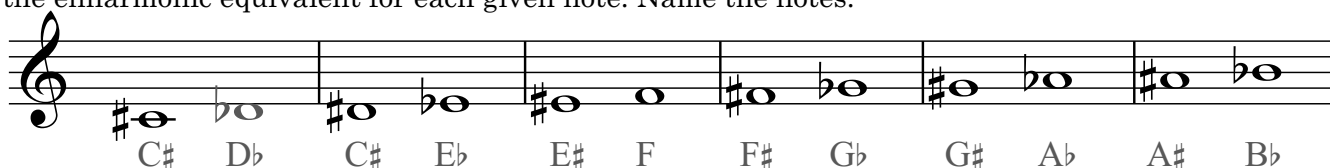
G# =                      Ab =

A# =                      Bb =

B# =                      Cb =



3. Write the enharmonic equivalent for each given note. Name the notes.



4. Name the notes. Indicate if the notes are an enharmonic equivalent (EE) under the letter names.

