

Original

9-46 9

"SOUTH CHANNEL
SUBDIVISION OF PART OF LOT NO. 1,
 OF THE RE-SUBDIVISION OF RUSSELL ISLAND, CLAY TR,
 ST. CLAIR CO., MICH.

LIBER 46 OF PLATS, PAGE 9

June 18-1926
J. L. Howell

DEDICATION.

KNOW ALL MEN BY THESE PRESENTS: That the "Russell Island Company," a Michigan Corporation, by **WILLIAM L. CARPENTER** as **PRESIDENT** and **JOHN H. BROOKE** as **SECRETARY** have caused the lands embraced in the annexed plat to be surveyed, laid out and platted and to be known as "South Channel Subdivision of Part of Lot No. 1, of the Re-Subdivision of Russell's Island, Clay Tr., St. Clair Co., Mich." and the street shown on said plat is dedicated to the use of the public.

Signed and sealed in presence of:

C. P. Bissans
 R. L. Carpenter

William L. Carpenter L.S.
 John H. Brooke L.S.
 Secy.

STATE OF MICHIGAN.

County of Wayne

On this 30th day of November 1925 before me a Notary Public in and for said County appeared **WILLIAM L. CARPENTER** and **JOHN H. BROOKE**, to me personally known who said that they are the **PRESIDENT** and **SECRETARY** of the said Russell Island Company, a Michigan Corporation and that the seal affixed to the above dedication is the corporate seal of said corporation, and said instrument was signed in behalf of said corporation by authority of its Board of Directors and William L. Carpenter and John H. Brooke acknowledged to be the free act and deed of said corporation; My commission expires October 26, 1928.

Rolla L. Carpenter
 Notary Public, Wayne Co. Mich.

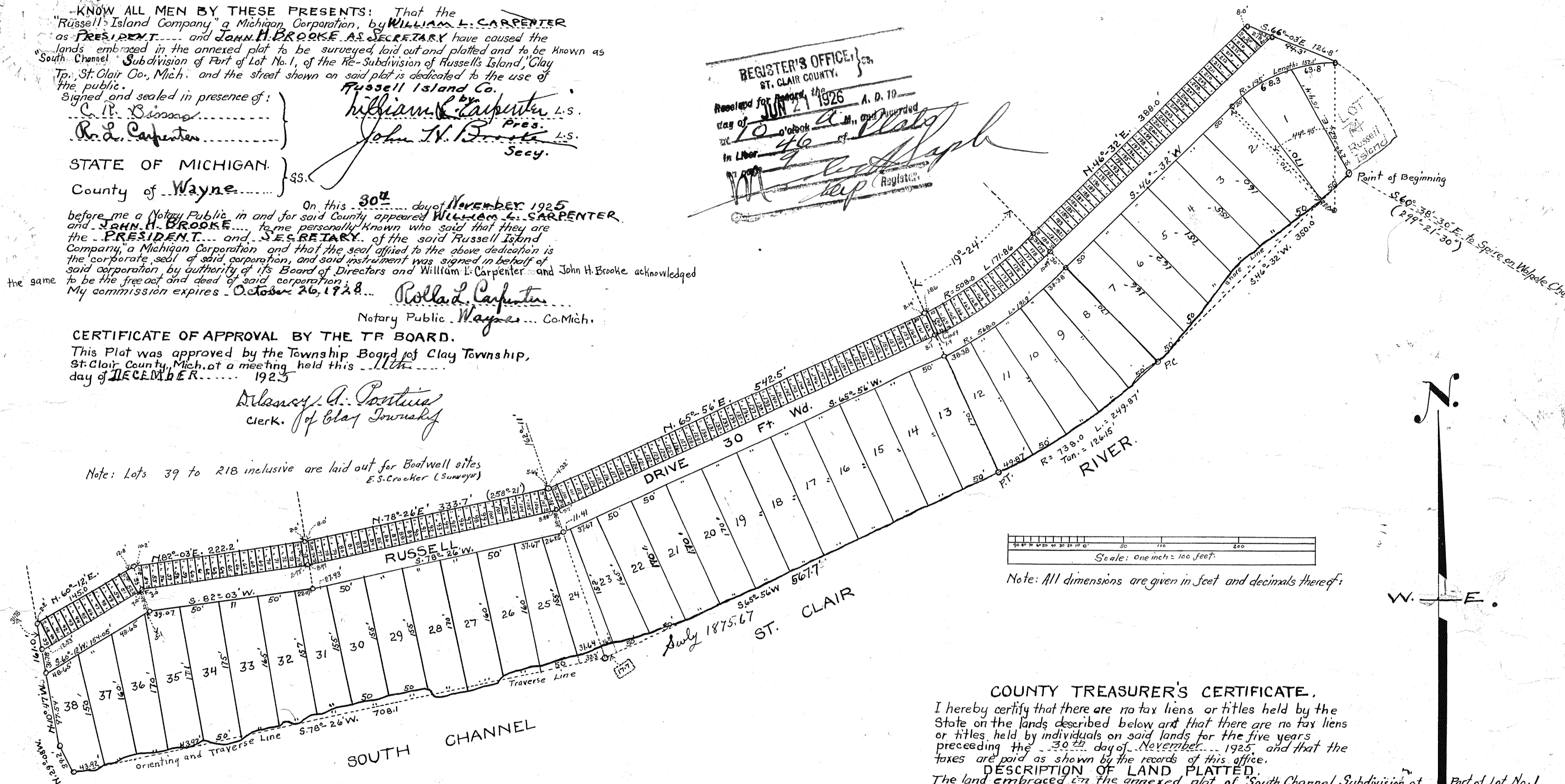
CERTIFICATE OF APPROVAL BY THE TR BOARD.

This Plat was approved by the Township Board of Clay Township, St. Clair County, Mich. at a meeting held this 17th day of DECEMBER, 1925

Delaney A. Postulas
 Clerk of Clay Township

Note: Lots 39 to 218 inclusive are laid out for Boatwell sites
 E. S. Crocker (Surveyor)

REGISTER'S OFFICE
 ST. CLAIR COUNTY
 Received for Record this
 day of JUN 21 1926 A. D. 19
 in Liber 46 of Plats
 M. J. [Signature] Registrar



Scale: One inch = 100 feet.

Note: All dimensions are given in feet and decimals thereof.

CERTIFICATE OF APPROVAL BY BOARD OF COUNTY AUDITORS.

Approved by the Board of County Auditors of St. Clair County Michigan at a meeting held this 1st day of June, 1926

SURVEYOR'S CERTIFICATE

I hereby certify that the plat hereon delineated is a correct one and that permanent monuments consisting of iron pipe of not less than one inch in diameter and fifteen inches in length set in a concrete base at least four inches in diameter, and forty eight inches in length have been placed at all points marked 'true' as hereon shown at all angles in the boundaries of the land platted, at all intersections of street intersections of alleys, or of streets and alleys and at all intersections of streets and alleys with the boundaries of the plat.

Emory S. Crocker Registered Surveyor Algona Mich.

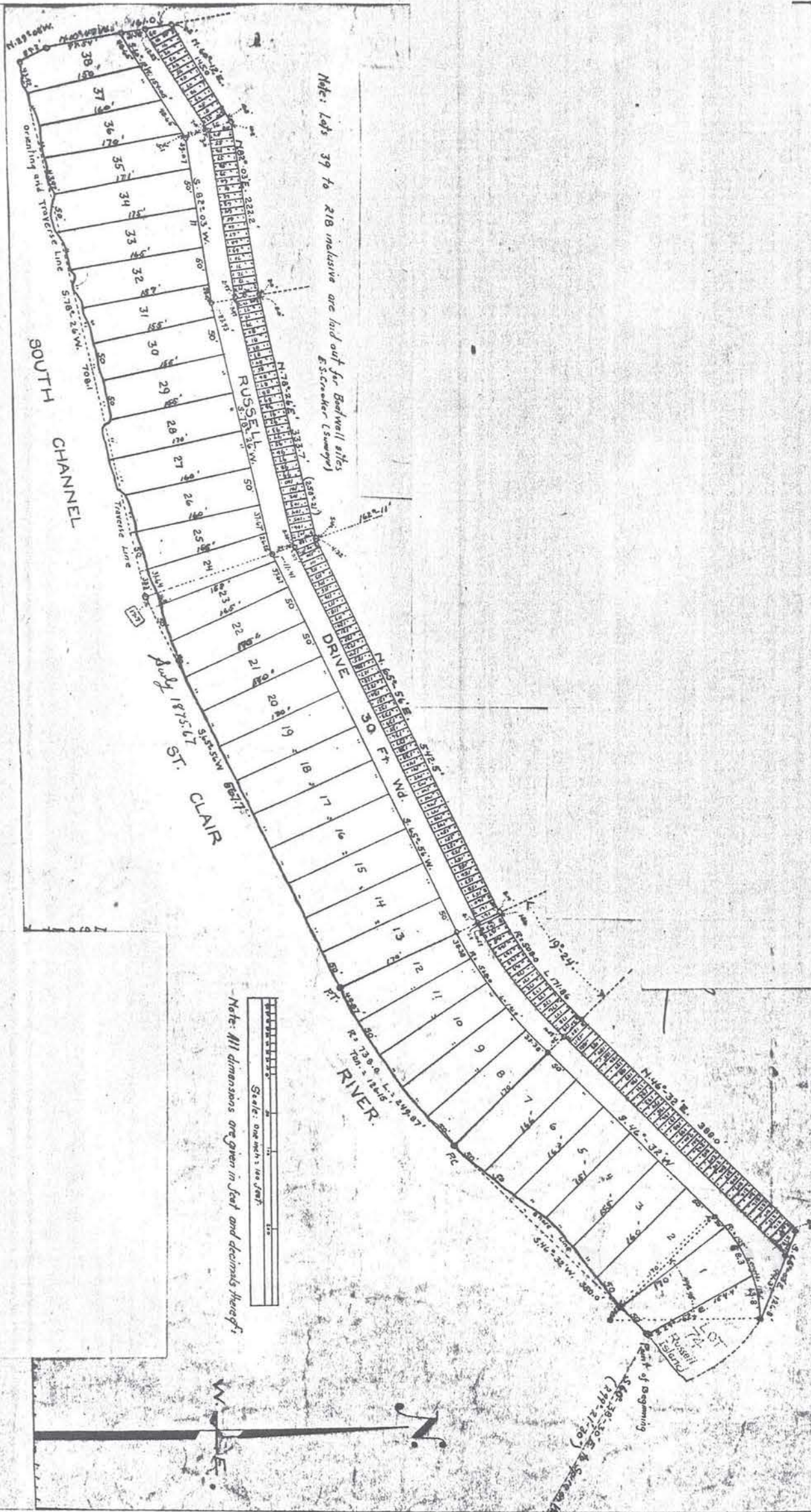
COUNTY TREASURER'S CERTIFICATE.

I hereby certify that there are no tax liens or titles held by the State on the lands described below and that there are no tax liens or titles held by individuals on said lands for the five years preceeding the 30th day of November, 1925, and that the taxes are paid as shown by the records of this office.

DESCRIPTION OF LAND PLATTED.

The land embraced in the annexed plat of South Channel Subdivision of Part of Lot No. 1 of the Re-subdivision of Russell Island, Clay Tr., St. Clair Co., Mich. is hereby described as follows: From an iron pipe 1/2 in. diameter set in a concrete base on the westerly shore of the South Channel and the southwesterly line of Lot No. 74 of the Russell Island Subdivision and from which point the Spire of the Walpole Island Church bears S. 60°-38'-30" E., thence Southwesterly along the shore of the South Channel of the St. Clair River a distance of 1875.67 feet; thence N. 29°-08' W. 39.2 feet; thence N. 10°-47' W. 161.0 feet; thence N. 60°-12' E. 145.0 feet; thence N. 82°-03' E. 222.2 feet; thence N. 78°-26' E. 333.7 feet; thence N. 65°-56' E. 542.5 feet; thence curving to the north with a radius of 508.0 feet a distance of 171.86 feet; thence N. 46°-32' E. 388.0 feet; thence S. 66°-03' E. 126.8 feet; thence curving to the west with a radius of 195.0 feet a distance of 63.8 feet; thence S. 29°-52' E. along south westerly line of Lot No. 74 of Russell Island 154.4 feet to the point of beginning.

Robert C. Anderson
 Co. Treasurer.



SOUTH CHANNEL SUBDIVISION OF PART OF LOT NO. 1 OF THE RE-SUBDIVISION OF RUSSELL ISLAND.
 Plat recorded June 21, 1926 Liber and Page 46-9 St. Clair County Register of Deeds Office
 LAND TITLE AND ABSTRACT CO., PORT HURON, MICHIGAN
ESTABLISHED 1899

46-9