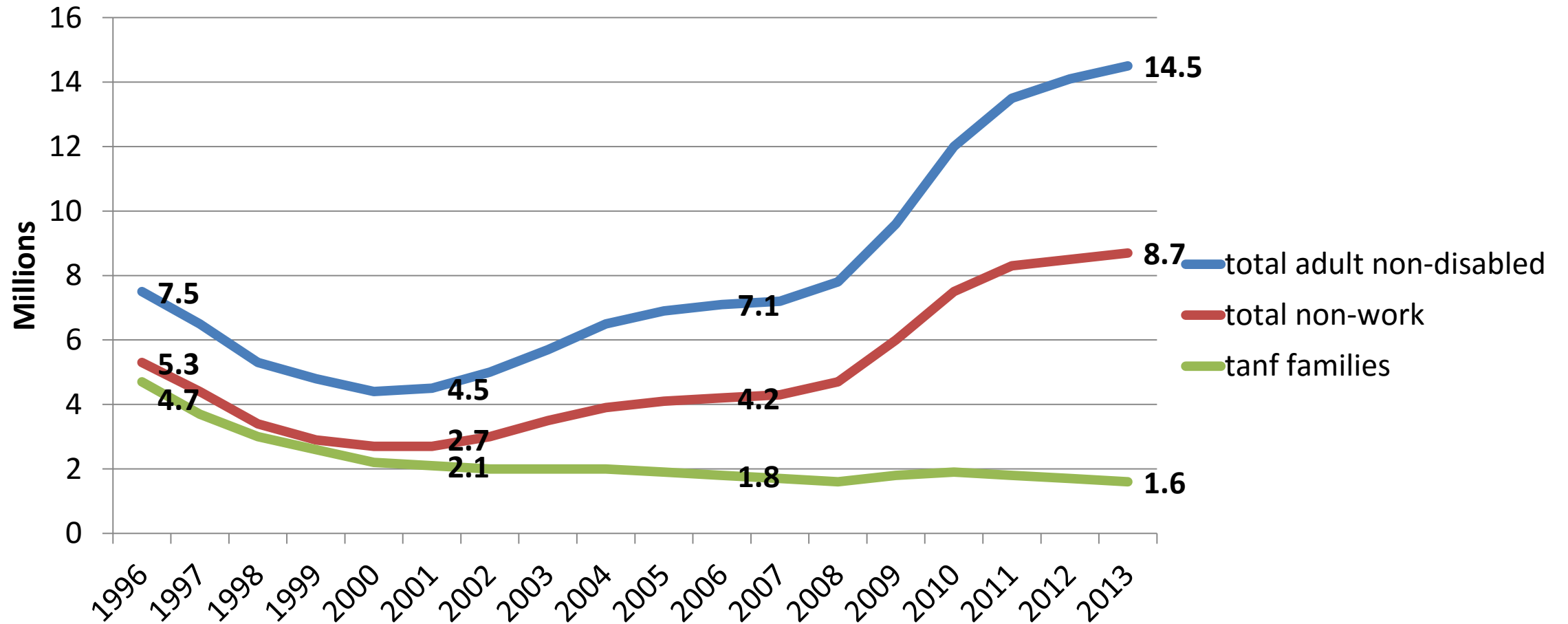


Numbers of non-working SNAP households closely mirrors TANF trends for the first five years after welfare reform, then diverges

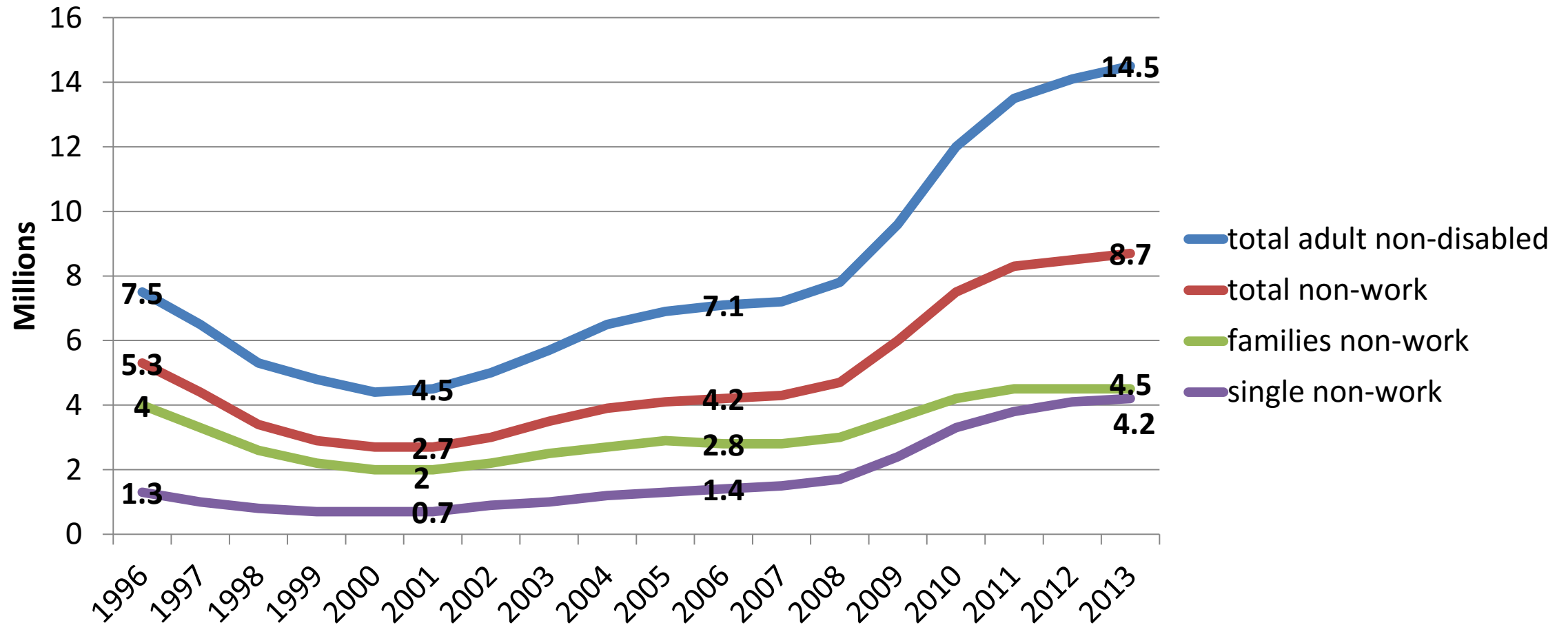
Millions of households 1996-2013



Source: FNS- SNAP Quality Control Sample & HHS- TANF Caseload Data

Growth of non-working households (millions)

1996-2013



Source: FNS- SNAP Quality Control Sample & HHS- TANF Caseload Data

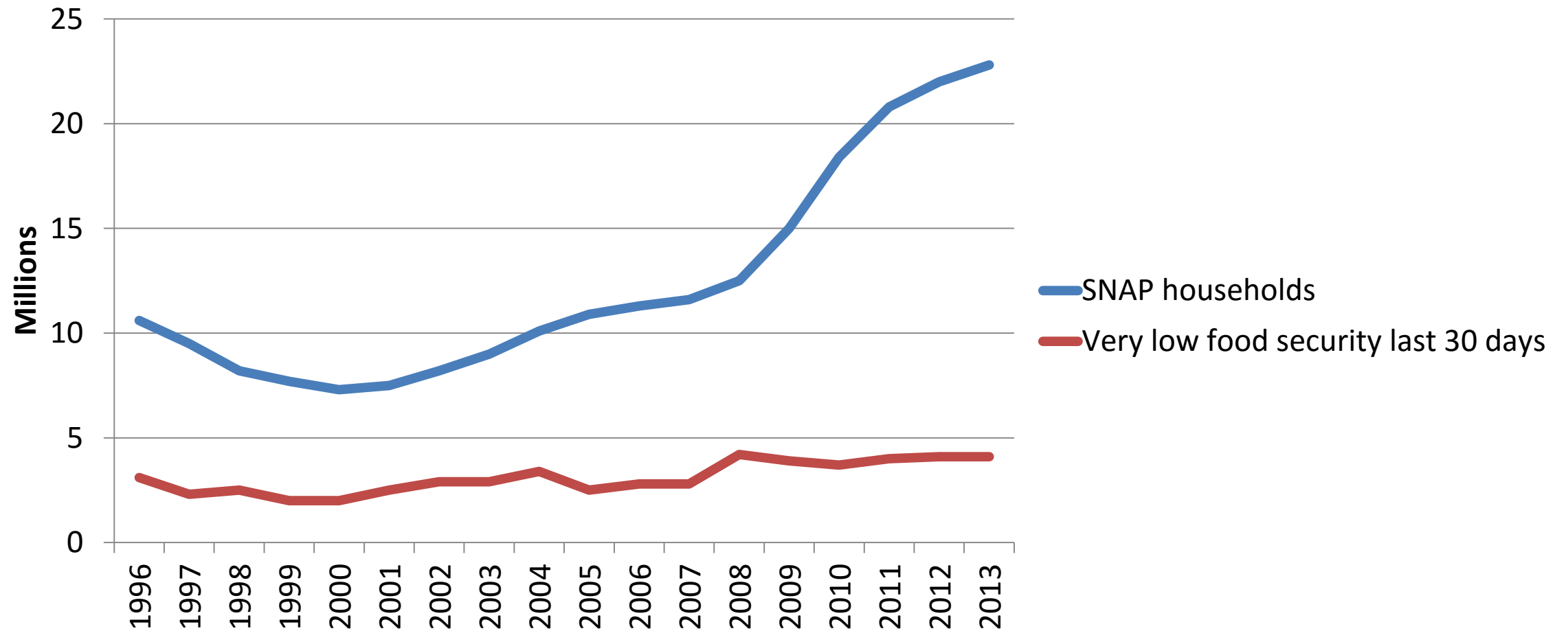
Food Stamp spending represents a high burden to average taxpayers

92 MILLION AMERICAN TAX FILERS PAID SOME NET INCOME TAX

\$804 - - TAXES TO PAY FOR FOOD STAMPS FROM EACH NET FILER

\$12,800 - - INCOME TAX PAID BY THE MIDDLE 20% OF AMERICANS

Numbers of households experiencing food insecurity is unrelated to the prevalence of SNAP benefit receipt



Source: FNS- SNAP Quality Control Sample. USDA- ERS Household Food Security in the U.S. data 2000-13. Estimated effects of differences in data collection screening 1996-99.

WE
ACCEPT
FOOD
STAMP

FOOD



MIXX
TAIL

\$2.79
5 CANS

\$6.99
4 PACK CANS



Wine & Spirits



SAVE
ROLL YOUR OWN
CIGARETTES
BEST
PRICES

OPEN
7 DAYS A WEEK
11am-9:00pm

WE
ACCEPT
FOOD
STAMP

MIXX
STALL

Welcome to
Wisconsin
SPOTTED COW
DON MAN
TWO WOMEN

CIGARETTES
BACK