



## SHUN & Shame

# Green Concept

Being green a human survival skill !!!

Custodian Guardian 'GREEN Concept' endeavors' to turn people from being a threat to other people & 'Planet EARTH'. Into a Custodian of 1 GOD's creations! Being 'Green' starts at home includes neighbors & community. A Custodian Guardian Gathering is a local activist hub (environment, social justice, religion).

Custodian Guardian SHUN & Shame. A Community holds guilty accountable, MS R1-7. Government turns Green Concept into Law.

## ADDICTIONS

Addiction a repetitive compulsive behavior gratifying a perceived need. Addicts delude themselves by not accepting the harm their behavior is doing. Harm to themselves, family, friends, work mates & community. Keep addicts away from children.

Addicts are delusional ! Addicts do not believe they are addicted as long as they are enjoying them-selves & holding their lives together. Realistically, addictions limit addicts individuality & freedoms as they become more restricted in their behavior.

**1GOD is waiting to hear from YOU !** 

### ADDICTION Prayer

Addiction day 12.2.7.

Dear 1 GOD, Creator of the most beautiful Universe  
Your most humble faithful custodian guardian (1<sup>st</sup> name)  
Help me be not an addict  
Help Humankind contain addictions  
Punish addictions providers in life & Afterlife  
Let this community be addiction free  
For the Glory of 1 GOD & the Good of Humankind



This prayer is used on Addiction Day ! Or as needed.



Addicts with illicit addictions enjoy the secretive nature of their habit! Illicit addictions result in imprisonment & loss of self respect. Addicts are ignorant (stupid), gullible (foolish) & weak (pathetic) !

When people are addicted, their enjoyment often becomes focused on carrying out their habit & reliving withdrawal. Rather than the full range of experiences which form their full potential for happiness of non-addiction. A moral & civil duty, always hold addicts accountable.

Addicted become a threat to themselves & community. They become delusional, immoral, dishonest, deceitful, selfish, uncaring & anti social. A moral & civil duty, always report addicts.

Addicts need psychiatric help & help support groups. Relapse Addicts are quarantined to protect the community especially the young.

## Adrenaline Addiction

**Adrenaline**, a hormone that acts as neurotransmitter. A main cause of a stress reaction to a threat to the physical integrity of the body.

Excessive participation in aerobics, car racing, jogging, sky diving,... Participation gives an adrenaline rush leading to addiction. These Addicts become depressed when they cannot get their rush'.



When Adrenalin is released into the bloodstream it acts to increase heartrate, blood pressure, dilates pupils, raises blood sugar levels & diverts blood flow from skin & inner organs. People who often get angry, guilty, worrisome arouse their adrenaline even though they may sit around doing nothing else. Angry, worried\_ meditate.

A need for speed is an adrenaline affliction. Any racing gives an adrenaline rush. Winning gives an even bigger rush. The human body was not designed for speed. Their is no need for speed. Winning is selfish.



Winners rush leads to wanting more. Losing leads to anxiety. This anxiety leads to desperation. Wanting to win at any cost (cheating, substance abuse, kill to win..).



Anti social behaviour gives an adrenaline rush. The more obnoxious, outrages the bigger the rush. Ask any punk road-terrorist (burnout, tail gating, cutting off, pushing of a road, extra loud wheelies), gang member (bullying, vandalism, violence), serial killer (inflicting fear, pain, death)

Anti social behavior a threat to a community is prosecuted **MS R1-7**  
It is a civil duty to report, road rage, dangerous driving, accidents.

Dangerous activities (stunts, thrillseeking..) give an adrenaline rush. People who otherwise cannot get a winners rush do dangerous things. These activities encourage copycats who get injured, killed, being a threat to others. Dangerous activities end, **MS R2**. Participants have to pay for rescue & medical expenses.

Being an Adrenaline junkie is an illness. Seek help!



## Alcohol Addiction



Alcohol is consumed through drink & food. Consuming Alcohol leads to behavioral changes (drunkenness'). Drunkenness (alcoholism) is the main cause of Accidents, Assaults, Rape, Vandalism. Drunks are a burden, a nuisance & threat to the community.

Alcoholism is the overpowering need to consume alcohol. Like all addicts, Alcoholics put their own selfish needs above that of others & the community. Alcoholics will beg, borrow & steal to get a drink! Alcoholics need treatment. Treatment consists of drying out! Treatment is not a cure. Alcoholics soon are back being Drunks!



The best help for Alcoholics is to stop the availability of Alcohol.



Production, marketing & distribution of Alcohol must end.

## ZERO TOLERANCE to ALCOHOL !!!



**CHRISTIANITY** is the main cause of spreading Alcoholism.

Christian Idol (false idol) Jesus (false messiah) told Christians to drink Alcohol (red wine). Christians drink Alcohol at religious mess & non religious gatherings. Christian HE & SHE drink Alcohol before mating. Christian SHE continuous drinking Alcohol during pregnancy & breastfeeding (baby is born an alcoholic). Christian parents encourage their children to drink Alcohol. Christian parents are bad parents!



A young Christian having been weaned on Alcohol sees at mess in church, Priest, Parents, friends, neighbors drink Alcohol. A young Christian sees parents drink Alcohol at home, leisuretime & functions. A young Christian (HE & SHE) when socializing within their age group faces peer pressure to binge drink to be acceptable. Young Christian HE get young SHE drunk to mate or rape. Both become 'Trash'. Shame, Shun, Trash!

Christian monks could not find spiritual inspiration through praying & reading the scriptures turned to Alcohol for spiritual inspiration. Not happy, monks produced their own Alcohol. Producing & drinking Alcohol kept monks in a constant state of drunken stupor. Now they had insights (la la land).



Catholic Schools are like Taverns. Principals have a bar (expensive alcohol), teachers social club has a bar. Administration has wine (cheap) for mess & fund raising.

Every Friday & Saturday drunken Christians Bash, Rape & Kill. On Sunday they 'Confess' get 'Forgiven'. After they go to mess for a drink (alcoholic). After church they go binge drink with friends, family. Binge drink Christians are the main cause of 'Domestic Violence'. **1GOD** is dismayed, will not forgive & hold accountable, so does Humankind. Every drunk is held accountable.

Christianity because it encourages the consumption of Alcohol is not acceptable as a religion or cult. **1GOD** does not want Humankind to destroy its health by consuming Alcohol. **1GOD** is disappointed with Christian addiction to Alcohol.

**Say NO to Christianity !!! Say NO to Alcohol !!!**

### **M U S T – D O :**

SHE is not to mate with drunk HE. HE is not to mate with drunk SHE. SHE drinking during pregnancy is put under home arrest. SHE drinking while breast feeding is put under home arrest. A community has a duty of care to every unborn, newborn. Alcoholic SHE is not suitable to be a parent. Foster parents raise Alcoholic SHE's baby.

Parents with underage children (SHE 17, HE 18) that drink Alcohol are unacceptable. Every community has a duty of care to every under age child. Alcoholic Parents Holy Matrimony Contract is canceled their underage children are raised by Foster-parents.

Education facilities are Alcohol free. Educators (Principals, Teachers, Administrators) who bring, consume Alcohol are removed & banned from Schools. Christian Education-facilities are transferred to public education (without compensation). Christian Educators (Principals, Teachers, Administrators) are removed & banned from Education. Their school bars are demolished their Alcohol is destroyed!

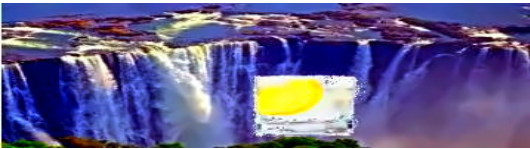
Every community (Shire) has a duty of care to its people. Alcohol a community threat is contained & eradicated. Every Shire is to ban Alcohol & enforce the ban. Province bans the production & distribution of Alcohol. Illegal production, distribution of Alcohol is prosecuted: **MS R6** Existing production, distribution of Alcohol is stopped & closed down. No compensation is given.



Deny Christian churches, cults charity status & tax exemption.

Make being drunk a Crime, **MS R2** No bail for drunks.

Any Crime committed while being drunk doubles Rehabilitation.



Filtered Water  
for good Health !!!

## Drugs Addiction



It is common knowledge that drugs (mind altering substances) are bad for the human body. Yet 99.9 % of Drug Junkies take drugs by choice. They are extraordinary dumb & anti community scum. Don't feel pity for Drug-Junkies their problem is self inflicted. They are a burden & threat. Hold them accountable.

Cage these threats to the community, **MS R4**.  
Manufacturers, Distributors & providers of mind-altering substances, illegal or legalized (Bad Law), are caged, **MS R7**. Bad law is reversed, backdated.



Marijuana, Codein are not medicine. They are not to be used. They are illgal drugs, **MS R7**



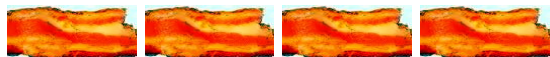
Any Crime committed while being under the influence of mind



altering substance (s) trebles Rehabilitation. Being under the influence of Alcohol & mind-altering substances Rehabilitation is increased by a multiplier of 5. **Note!** Past & present Drug Alcohol junkies can only be employed at 'wmw x2' or lower.

## ZERO TOLERANCE to MIND-ALTERING SUBSTANCES

### Eating Addiction



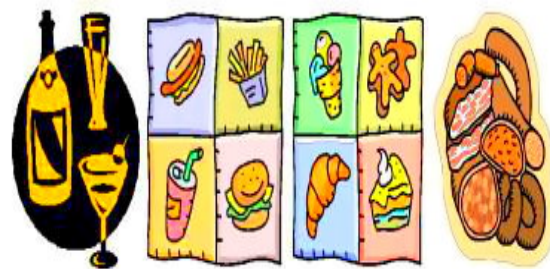
Eating is essential we can't live without it. Eating is a necessity, over eating is an addiction. Overeaters (Blubber-People) can look forward to getting, blubbery, get more sweaty, tire more easy, trouble finding gear that fits, find chairs uncomfortable tight, trouble tying shoelaces, have clogged arteries, high blood pressure, get diabetes, die younger, probable have obese children.

Blubber is good for hippopotamus & whales. For humans too much blubber is sickening. Being overweight makes a person more out of



breath, lethargic, tire easy, have more sickies, become a burden to oneself, family, work mates, friends & community. Being overweight is not acceptable. Help people loose weight.

Stop being blubbery. End having alcohol & artificial sweeteners in food or drinks. Reduce sharply using natural sweeteners & reduce sodium intake, use only iodized salt. Stop eating manufactured & GM (genetic modified) food.



Banquet, Feast, Smorgasbord, long meals type of eating are out. Over eating is out. Consuming Alcohol while eating is out. Desert's are out. Eating small portion's is in. Drinking water with meal's is in.

Adhere to the Custodian guardian 'Daily Routine'. Reduce the



amount you eat for each meal. Drink unsweetened drinks. Avoid fissy drink. Do daily day & night exercises. Observe 'Night Curfew'. **Pray :**

**1GOD is waiting to hear from YOU !**  

### **B L U B B E R – Prayer**

Dear **1GOD**, Creator of the most beautiful Universe  
Your most humble faithful custodian-guardian (1<sup>st</sup> name)  
Thank you for supplying me with Daily drink & food  
Help me not to overeat & become blubbery



I endeavor to be deserving of small portions of food every day  
May I be spared agonizing health issues because of overeating  
For the Glory of **1GOD** & the Good of Humankind

**Blubber people use this prayer before every feed!**



### **Gambling Addiction**



Gambling uses human weakness & deceit to bring misery to persons , families & the community. Gambling promoters prey on weak desperate people. Gambling involves betting (on anything), hedging (insurance, futures, options..), lotteries (you got to be in it to win it), speculating (hoping asset values increase). Don't feel sorry for gamblers. Weak, selfish, dumb individual's believe they deserve unearned wealth. They don't. Hold them accountable.

Reality entertainment participants are the most embarrassing gamblers. They behave disgusting, betray, deceive, lie, humiliate others & themselves, gambling that they win. **Winners loose their winnings to 100% tax on winnings. Unearned income is taxed away. Shun Players, Promoters, Sponsors..**

Taken advantage of peoples weakness is a crime, cage gambling providers, **MS R7**. Gambling venues (Betting shops, Casinos', Future exchanges', Reality entertainment, Stock-exchanges) are closed. Confiscate all profit & assets of gambling provider &



professional gambler (fund manager, land speculator, futures trader, share trader..). Cancel Freehold (Investment property). Individuls' that win (includes reality entertainment winners), loose to 100% tax on winnings. Government that allow gambling is replaced it's members get **MS R7**.

Gamblers are dumb, deluded, selfish bad people. Gambling provider are deceitful parasitic predatory profiteer's. Both are BAD & are accountable.

## ZERO TOLERANCE to GAMBLING

### Shopping Addiction



You enter a shop & you can't leave without shopping. A new product is released or 1/2 yearly 'Sale', you stand outside the store for many hours, you have to be the 1<sup>st</sup> to get the product (s). You are an addict! A shopping-junkie!



Greedy Profiteers use addicts to their advantage. Marketing create something new (usually unneeded junk). Then market it as something that everyone has to have.

The Advertising campaign is mainly aimed at shopping junkies. Junk Providers for Shopping Addicts are a large source of rubbish & garbage. Advertising of non essentials ends. Delivery of Junk mail to mail boxes ends, breaches: **MS R4**.



Non essentials have an extra 50% tax (garbage) charged. Shopping junkie's seek help.

**Responsible shopping:** No impulse shopping (make a shopping list & stick to it). Shop alone. Only purchase essentials (No junk). Don't use a credit card.

### Smoking Addiction



**Smoking** addiction, a human misery! Smokers stink from the mouth, their clothing stinks they stink up a room. Their ashes & butts are everywhere. They are

dirty, disgusting, stinking individuals. **Shun them! Shame them.**

Smokers are a health risk to themselves. They burn their lips, teeth, gums, mouth, throat, windpipe & lungs becoming sick, a burden to the community. **Smokers are lazy taking many smoke breaks & self inflicted sickies.**



Smokers are a health risk to others. Pregnant smokers are hurting their unborn. After birth these newborn are sentenced to a life of having health issues. They may have deformities, disabilities.. Hurting unborn: **MS R3** Children of smoking parents are to sue their parents for compensation.



Smokers are negligent. They start fires, homes, forest, grass. They are held accountable, **MS R4** & pay compensation. **Smokers fire, injured people & or animals, MS R5** It killed people & or animals, **MS R6**

Passive smoke (assault) hurts people. Smokers that create passive smoke are prosecuted, **MS R3**. Entities (leisure, entertainment, work..) that allow smoking are prosecuted, **MS R3** & have to pay compensation. **Government that allow smoking are replaced, get MS R7**

In 1951\* it was established that smoking is unhealthy a severe threat. Government & Government agencies, departments that didn't 'Ban' smoking failed to serve & protect the community. **Retrospective legislation is passed & these guilty get, MS R7.** \*Pagan Calendar



Any individual or group, business or other entity that promotes (advertising, marketing, freebies), allows (parents, teachers, work, clubs, eateries, entertainment venue), profits (manufacturers, suppliers, transporters, wholesalers, retailers), makes available 'Smokes' & or smoking accessories, **MS R7**

It doesn't matter what the 'Smokes' contain.

The act of smoking is the health risk.



**ZERO TOLERANCE to SMOKING !!**

## **New Technology Addiction**

New Technology junkies can be amusing. They camp outside a retailer waiting to buy a new over priced gadget. [How silly!](#)

New Technology junkies a silly mutation of Shopping Addiction. Are the greatest cause of waste. They discard goods that work & have a long use by date. They never learn to use their new technology. Because they do not have it long enough. [These junkies turn longterm products into disposables.](#)

Most New Technology is not recyclable. Creating waste disposal problems for the Shire & future generations. A microchip producer brings out a new chip every 6 months to cater for New Technology junkies. [Perfectly functioning chips are discarded. What a waste. Environmental vandalism. Manufacturer, distributor, MS R7](#)

Community's need to set guidelines. Custodian Guardian solution, every new product has a shelf life of 7years. [It cannot be replaced with a new model for 7 years. Breach, MS R7](#)

**The people, organizations that create junkies & feed addiction are despicable, immoral, criminals. They are held accountable: MS R7.**

**NOTE !!** This applies to all 'Addictions'. Parents of underage (17 SHE, 18 HE) are accountable. [MS R1, 1<sup>st</sup> offence, 2<sup>nd</sup> offence MS R2, loose all their children. Cannot look after other underage.](#)

## **BURNING**



After humankind discovered how to use fire. It saw this as a blessing.

Wood burning was supplemented with fossil fuel burning. English





Christians introducing the industrial age started the pollution that is leading to climate change. Fire & burning are now a threat, a curse.

**STOP BURNING, NOW !!!**

The most dangerous part of burning is, SMOKE. In fires the greatest threat to health, mortality is smoke inhalation. On a greater scale Smoke rising up into the atmosphere Stops heat escaping into Space. Surface water warms, surface land warms, ice melts: CLIMATE CHANGE !



To survive the human body needs **Breathable Air**. Humans burning things is the main threat to 'Breathable air'.

**Non breathable Air You have 4 minutes to live!**

**ZERO TOLERANCE TO AIR POLLUTERS !!!!!!!**

## Energy

Too much leisure time, too large homes, too large incomes, too many unneeded gadgets, has created a spike in ever increasing energy needs. Current Energy is polluting, has high establishing costs, high running & maintenance costs. Polluting Energy relies on burning. Burning is replaced with non burning.

Domestic & non domestic burning of dung, wood, coal, gas & oil for cooking, heating & power, **ENDS!** Power-Stations that burn (coal, oil gas, uranium) to create energy are **SHUT Down** & dismantled. Energy is produced by non burning. Polluting Owners & operators are prosecuted, **MS R7**. Uranium & Coal mines are closed & sealed. It's Owners, Operators are caged, **MS R7**

Burning coal produces great amounts of air polluting smoke (Carbon dioxide). Carbon dioxide drifts up. 50% is washed down by rain the rest drifts into the atmosphere where it accumulates. Carbon dioxide lets through sunlight to heat the Earth but prevents some of the heat from being radiated back into space (Global-warming). Result Earth's

surface is slowly heating up. This heating of the surface temperature has increased dramatically since year '0' (2004). This warming decreases the size of glaciers & polar ice caps. Resulting in rising sea levels & climate change. \*Custodian-Guardian New-Age time-management



Coal is transported by open (uncovered) rolling-stock. Coal-dust is blown onto: animals & people (eye infections, respiratory problems, rashes.), laundry (hung out to dry needs rewashing to avoid rashes), soil (crop, garden, orchard, vegetation), water (tank, creek, lake, river, sea) is polluted needs filtering. It Ends.

**Coal produces dirty energy**

**Coal is choking us**

**Clean Coal is a Fraud!**

**STOP** the lorries, close the Mines:

**SURVIVE !!!**



**Burning is replaced with, 'Solar, Water, Wind' !!**



Burning to move domestic & non domestic transport Ends! Gas & Oil have non burning use. Domestic & non domestic transport on Freeways is replaced with 'Freeway Trams' (see Shire)! Long distance overland transport is by Rail only. Individual polluting transport is phased out. Cancel new Freeways.

An increasing population needs better energy planning. Reducing energy usage per person is a must. Night Curfew is a must. Reducing energy for leisuretime activities is essential. Cluster homes replace 2 storey mansion's, double garage, vanity gardens, swimming pool,...

**Night-Curfew**

The human body was not designed to be nocturnal. Humans misused

their brain-power to create a nocturnal lifestyle. This lifestyle wastes a lot of energy, increases crime, is unhealthy, increases energy usage..



A 7 hour Night-curfew from 14-21 hours (C-G Klock) is mandatory. During Night-Curfew 'NO' road transport (commercial, private, public..) is allowed to move on roads except emergency vehicles!

No street lights, traffic lights, advertising...are on. No businesses are open. No air transport is operating Airports are closed! Air transport must land at the nearest available landing field! No rail movement! Railway stations & terminals are closed! Trains stay stationary in the station during Curfew !

Nobody works (everything is closed) except minimum emergency personal. No energy is to be used except for emergency or heating! 1 public news radio station is transmitting. All other entertainment is switched off! No office, no manufacturing or retailer is to operate or use energy! Homes can use heating in extreme cold (dress warmer). The Shire enforces Night Curfew.

## Leisuretime



Burning smoking BBQ's, 'End! Out door heating, 'End's'! Cold outside wear warmer cloth. Or go inside. Using outdoor heating is, Environmental Vandalism, MS R7.

Home don't use petrol burning Garden Power tools! Encourage family, friends, neighbors, workmates, to not use petrol burning Garden Power tools! Stop (non violent)! Community from producing, selling, buying, petrol burning Garden Power tools! It is your moral & civil duty to end polluting in your neighborhood community! Hold family, friends, neighbors, workmates, community accountable for polluting!



**Polluting** Entertainment Ends. In the Air: Air-Shows, private air transport (plane, jet, helicopter, drone, space-shuttle...). In under





the water: motorized boat racing, private-owned sea transport (cabin cruiser, cruise ships, hovercraft, jet skis, speed boats, yachts,..). On land: all 2,3 & 4 wheel motorized (burning fuel), cycles, bikes, SUV, buggies, sport-cars, limousines, luxury cars. Car-racing, car-stunts.



Fireworks are a major polluter. They become more common bigger more polluting. Depending on weather condition air pollution may linger for day's. Particle pollution settles on water polluting it making it unfit to Drink. Fireworks End! Laser lights replace them.

## Water

60+% of our body consists of water. Every cell in our body needs it. Water lubricates our joints, regulates our body temperature & flushes our waste...

Condensed atmospheric water vapor forms droplets. Earth's gravity pulls the droplets down (falling rain) to the surface. Rain is a major source of fresh water. This rain water is used for drinking, preparing food, cooking, washing, personal hygiene,...



A person used to be able to drink rainwater, use it for food preparation. This is not advisable, rain water is polluted, unhealthy, toxic, acidic, bad tasting, bad smelling. Laundry should not be left out in the rain to become polluted (dirty, sticky, smelly). Not only does it look dirty & is bad smelling but it may irritate the skin.

Cold rain falls as hail or snow. Snow accumulates on high mountains,



arctic & antarctic creating fresh water reserves. Snow is white, polluted snow is gray even black. Black snow is found in the Himalayas, glaciers around the globe, Greenland & Antarctica.

Communities create fresh water reservoirs. These reservoirs rely on rainwater & melting snow to fill them. Because of pollution these waters need treatment before human consumption.

Reservoir should be deep rather than shallow. Deep water is cooler, reducing evaporation, algae growth especially the poisonous type & insect infestation. Water sports are prohibited to stop urinating, menstruating & pooing into water (turning water into sewerage). Water craft (jet ski, motorboats..) pollute (oil, gasoline, battery acid..) they are banned! Exception: Park-Ranger transport.

A person cannot rely on the community doing it right. No treatment, partial treatment, wrong treatment, cost cutting, corruption, criminal behavior.. Home treatment of water is becoming mandatory.



Home treatment of water requires filtration. Filtration is to reduce: arsenic, asbestos, chlorine, chloroform, carbonate hardness, copper, dirt, herbicides, heavy metals, lead, pesticides, rust.. Also in warmer climates filtered water needs to be boiled to protect against deadly (micro organism) disease.

**Threats to fresh-water** Soon the demand for fresh water will exceed the availability of fresh water.

**Irrigation!** Using groundwater for irrigation depletes underground reservoir of water faster than it can replenish. Resulting in drying up a whole Ecosystem, creating a shortage of fresh water. Ground water irrigation ends. Anyone illegal using groundwater for irrigation is prosecuted, **MS R7**. Government allowing Groundwater irrigation, is replaced & it's members are prosecuted, **MS R7**.

Irrigation, using Freshwater from rivers, lakes, creek.. slows the flow of water. This encourages evaporation. Resulting in drought! This type of irrigation resulted in ending civilizations. End irrigation.

Polluted waterway's (creek, stream, river, pond, lake..) create a shortage of fresh water. Storm water filled with pharmaceuticals, toxin, poisons.. Illegal dumping of industrial waste, toxin, poisons.. Polluting of waterways ends, polluters are prosecuted, individuals **MS R3** all others, **MS R7**.

## Supplement fresh-water

Desalination uses a lot of energy, costly. Intake of water has adverse environmental impact, pulling large numbers of fish, shellfish, their eggs.. into the system. Larger sea creatures are trapped against screens at the front of an intake structure. Chemical treatment, corrosion, create a warm brine which is released back into the ocean.



Desalination has a high boron content making for inferior water quality. This water used in farming, ranching & food production results in a high boron level diet. Prolonged consuming of high boron levels is unhealthy.

Recycled waste water, sewage passes through primary treatment to take out solids, nutrients are removed, filters remove most bacteria & viruses. Water is then forced through a membrane to remove molecules. Tests don't reveal all health-risks.

**Toilet to tap is an option of last resort.**





Bottled water (costly) is suitable for travel. Plastic (has become a serious threat, stop making & using it) water bottles release chemicals which become dangerous when warming up (sun, heater). Glass (no lead) bottles are recommended.

## Flavored drinking-water

For variety drinking water is flavored. Some flavoring is unhealthy & is to be avoided. Flavored water can be served cold or hot.

**Suitable** flavored drinks: Beef extract, Chicken extract, Cocoa, Coffee, Fruit, Herbs, Spices, Tea, Vegetable.



**Unhealthy** flavored drinks & add-ons: Alcohol, Artificial color, Artificial flavoring, Artificial & natural sweetener, Carbonated, Cola, Cordial, Energy drink, Lemonade, Decaffeinated coffee, Fruit juice, Preservatives, Sodium,..



## Drinking water is best



**Daily-routine:** Get up, have a 0.2l glass of lightly chilled, filtered water. Before every meal (Breakfast, Early Day snack, Lunch, Late Day snack, Dinner) have a 0.2l glass of lightly chilled, filtered water.

Have Drinking-glass (no plastic) filled with 0.2l of filtered water on each Bedside-table. Drink during night every time after you visited a toilet & when having a dry throat, drink rest in the morning.



Any Person, Organization/Government that denies drinkable water or is cause & effect of polluted water. Are held accountable, **MS R7**

## No-liquid intake You have 4 days to live

## Product development

When people create, their creations are to have a beginning, an end & be recyclable. E.g. Household product manufactured (beginning), use by date (end), biodegradable (recyclable). Everything made is to be recyclable!

Products from the concept stage are to be healthy, safe, non polluting biodegradable & or otherwise recyclable. Everything produced & used is biodegradable & or otherwise recyclable.

**Stop**, using anything that is unhealthy, unsafe, pollutes, is not biodegradable or otherwise recyclable! Producing Manufacturing unhealthy, unsafe, polluting goods is a crime, **MS/R7**

## GM-Crop (Monster seed) > GM-Food (Unhealthy Food)

Genetic modified (engineered) Crops are based on Seeds altered by humans of **1GOD's** original design. For the purpose of Greed, Profiteering & insulting **1GOD**. **1GOD** doesn't want Human Genetic reengineering. Evolution is to evolve, mutate,...

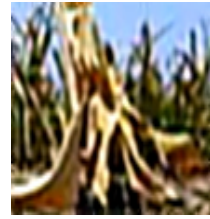
**Background:** During the US invasion of South East Asia. The US Military ordered the develop & usage of Herbicides (Agent Orange), a weapon of 'Mass Destruction' of Vegetation & Eco system. Removing foliage made it easier from the air to gun down fleeing children, women & livestock (increase killrate). The poisoned ecosystem led to mutations. Result birth defects sick people & animals,...



Herbicides are dangerous, polluting soil & waterways. Producers & distributors of Herbicides are prosecuted, **MS R7**. Government that allow this pollution is replaced, **MS R7**. Food polluted with Herbicides are unfit for consumption (Animal, human).

The Herbicide manufacturers (Greedy predatory parasitic profiteers) expanded from Plantkillers into Seed poisoners. A normal seed is

modified using techniques learned creating 'Herbicides'. These modifications create unnatural mutations '**Monster Seeds**'. Modifications make seeds impotent to re sowing of crop, forcing to always buy seeds each season (Evil immoral Greed).



Evolution notices the modified Seed & responds by modifying every thing that the seed comes in contact with, ecosystem & food chain. Crops from GM seeds end up going straight (bread) to human food consumption or via animal feed (fish, meat, poultry). Creatures (Sea creatures, Birds, Mammals) fed GM Crops direct (chicken, pig..) or indirect (Rodent eats seed, feed, Rodent eaten by Predator, Predator killed by Hunter becomes Gourmet dinner..).

Food creatures eat influences their digestion. To digest Modified plants a creatures digestive system must modify (genetic re engineer) itself via Evolution. This unnatural (Anti GOD) type Evolution creates unnatural new types of Mutations.

Genetic Modification (GM) is Anti-1GOD, a threat to humankind, all other creatures & the environment. GM Crop because of the flow on effect alters the whole Food chain. Creating mutations which create new Diseases & Life threatening Global Plagues in all members of the Food chain! People will become more sick, Die younger, more sick babies, more miscarriages...

**GM-Food** (Unhealthy Food): Alfalfa, Baby-food, Bacon, Bread, Breakfast-Cereal, Canola, Chicory, Corn, Cotton-seed oil, Eggs, Ham,



Margarine, Meat, Papaya, Peas, Potato, Poultry, Sausages, Soybean, Sugar-beet, Sugarcane, Sweet-Peppers, Tomatoes, Wheat, Zucchini..

Say '**NO**' to **GM-Food**!

**Must do!** Cure to this threat to Humankind & the Eco-System is Prevention & Treatment.



**PREVENTION!** Stop: GM Research, GM Seed manufacture & GM Crop growing.

**TREATMENT!** Government prosecutes: GM Scientist, Executives, Directors, Owners & Crop Growers for Crime against Humankind & against the Eco system. **MS R7**

Government ends threat by scorching GM Research & Seed manufacturing facilities. GM Crops are burned. Contaminated Soil were GM Crops were grown is scorched 3 years running. Government that doesn't implement this Treatment' is replaced.



**NO GM > NO GM-Seed > NO GM-Crop > NO GM-Food**

Home don't eat GM Food! Encourage family, friends, neighbors, workmates, to not eat Gm Food! Stop (non-violent)! Community from producing, selling, buying, GM Food! It is your moral & civil duty.to end GM (seed, crop, food)!

## **Pest Control**

Inside Insecticides (chemical) that are used, attack the nervous system. They make unborn & newborn hyperactive. Insecticides irritate Human & pet respiratory systems. Do not use Insecticides inside. Keep inside clean & tidy.

Outside Insecticides (chemical) are used on crops, orchards & food. Crops, orchards & food that have been contaminated are unfit for human or animal consumption. They are burned by the community



(Shire). Insecticides seep into the water system ending up in Oceans. Polluting the Ocean Eco system, polluting seafood.

## **Fracking**

Fracking is a great threat to the environment, community, humans,... Fracking is the process of drilling & injecting fluid at high pressure into shale rock fracturing it releasing gases. The high pressure triggers 'Earthquakes'.

Each process needs millions of liter of water. The Water has toxic chemicals & sand added. During the process methane gas (increases

Global warming) & toxic chemicals pollute nearby groundwater. Drinking this water has resulted in cases of neurological, sensory & respiratory damage to humans & animals.

Waste fluid is left in above ground puddles to evaporate. Releasing volatile organic compounds into the atmosphere, contaminating air, creating ground level ozone & acid rain. This results in unhealthy livestock, crops, fruit & shriveling inedible pasture.. Residents complain of fatigue, nausea, headaches & worse.

Sometimes explosives are used which trigger Earthquakes. The use near faultlines may trigger a major Earthquake. These explosions damage underground reservoirs. They release gases that may start 'Wildfire's'!

## **Fracking is an Ecological Disaster. Fracking Ends!**

Owners & operators are prosecuted, **MS R7**. Government that allow Fracking is replaced & its members held accountable, **MS R7**.

## **Garbage**

The creation of Garbage is reduced!  
Biodegradable or reusable packaging is used.  
Making DISPOSABLE products\* ENDS!  
Printing Junk mail\* ENDS!



The making of unnecessary JUNK (collectibles, gadgets, designer gear..)\* ENDS! \*These providers are prosecuted, **MS R7**

It is your moral & civil duty.to end dumping of illigal Rubbish Garbage in your neighborhood community! Hold family, friends, neighbors, workmates, businesses, community, accountable for polluting! Communities are out of room to dump garbage (landfill). **We must reduce Garbage NOW!**

## **Shopping Malls**

In a Shopping Complex having 7 Retail outlets selling the same goods (jeans,..) operated by 7 different Profiteering Entities is a waste of energy, capital, floorspace. The 7 Retail outlets are replaced with 1



**CROn** retail outlet (1 CROn for each segment). A Shopping Complex is replaced by the '**CRBC** (CROn Retail & Bazaar Complex)!' Parasitic Predatory Profiteering Entities (Shopping Complex & Retailers) are closed down, owners & operators are prosecuted, **MS R6**. CROn Retail replaces all Fastfood Clones with a Healthy (non alcoholic) Beverage-Bar. **CRBC** are part of a Shire Oasis.

Nail salon create toxic fumes. They are a health risk an air polluter. This pollution enters the air circulation system. Employees have breathing protection. Ignorant customers (victims) don't. These Shops are wide open, spreading toxic fumes inhaled by passers by. This health risk is most threatening to pregnant women, newborn & elderly. If you have been exposed to toxic fumes sue the salon & the Shopping Center for compensation. Shut them down & ban them. Prosecute owners & executives, **MS/R7** It also applies to Beauty & Hairdresser Salons. **Note!** Doesn't apply to Hair cutters.

## Town planning

The purpose of Shire Planning is to utilize land to most benefit Community & Habitat. It is essential a Community & Habitat harmonize. All fertile land has to be utilized for growing food & or ranching, ensuring sanctuaries are provided for native vegetation & native creatures. Non fertile land is to be used for domestic & non domestic building. Existing buildings on fertile land are demolished & recycled on non fertile land. Mansions with vanity gardens, holiday homes, apartments, penthouses, retirement villages are replaced with Shire cluster homes on non fertile land.

Cities with 1million+ residents & Freeways have 2 major problems: pollution & rushhour congestion. Both problems need now not later pollution & rush hour congestion. Both problems need now solutions. Custodian Guardian have a solution. Freeway Trams! Rail replacing individual transport & long haul Big rig haulage.





During a draught in Australia hundreds of sheep cried as they agonizing slowly died of thirst. Nearby golf courses watered their putting green. Golfers drank chilled water mostly mixed with alcohol.



This is disgusting! **1 GOD** is angry. Golf a silly useless elitist entertainment. It ends! Golf courses are recycled for food growing. Golfers are useless members of the community. Custodian Guardian SHAME & SHUN them.

Drinking water shortage & draughts make it unacceptable to operate private, commercial & tourist swimming pools. All pools are filled with soil. Owners are not compensated. C-G SHAME & SHUN them.

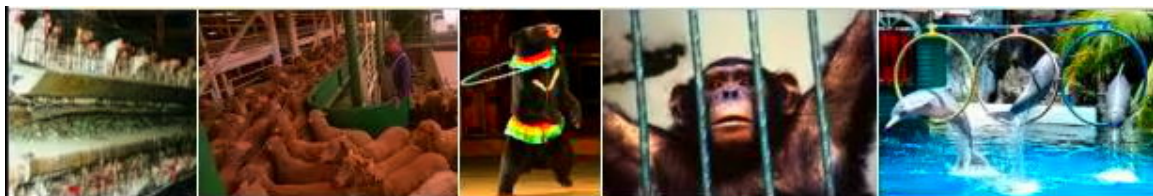
Celebrity sport needs purpose build facilities (Hall, Stadium..), infrastructure (Rail, Roads..). This wastes community resources & creates long-term (Shire) debt. Facilities are an Energy waster create a lot of garbage. Stop building these facilities & demolish existing.



These events supply entertainment, Alcohol, Cola, other sweet drinks, Gambling, unhealthy food (greasy, fatty, salty) often accompanied by violence (assault, rage, throwing objects, vandalism). Event's create a lot of garbage (bottles, food, paper, plastic, cans) needing storing (landfil). Gambling leads to crime: Cheating (nobling, rigging of result..), intimidation, blackmail, violence.

## Animal Exploitation

Animal cruelty Ends. Battery housing is demolished & replaced with 'Free-range'. Battery housing operators are prosecuted, **MS R4**.



Life Animal transport further than 30 km ends. Breach by primary producer, Agent & transport operator are prosecuted, **MS R4**.

Circus animal entertainment Ends. Animal trainer & Circus operator are prosecuted, **MS R4**.

Theme park animal entertainment Ends. Animal trainer & Themepark operator are prosecuted, **MS R4**.

Zoos are closed & replaced by Wildlife Sanctuaries which house only local specie. Illegal Zoo is closed, operator is prosecuted, **MS R4**.



Animal fights End. Animal owner, trainer & promoter are caged, **MS R4**. Any person (s) providing gambling get, **MS R6**



Racing animals Ends. Racing venue are closed & demolished. Racing animal owner, trainer & racing venue operator are prosecuted, **MS/R4**. Racing venue's are demolished.



Thrill killing (Safari hunts, Royal hunts, other hunts) of Animals Ends.  
Promoter & Hunters are prosecuted, **MS R4**  
Only Rangers can cull animals.

## Military

Military pollute with transport & explosives, A N (Atomic nuclear), B (biological), C (chemical) weapons. They are a threat to human, animal & plant life. Scientists that create these weapons get **MS R7**. Production faciities & stockpiles of these weapons are demolished, & burned by the SHIRE. Government that allow the production & or storage of these weapons are replaced & get, **MS/ R7**



**S U R V I V A L – Prayer** Survival-Day 11.1.7.

Dear **1GOD**, Creator of the most beautiful Universe  
Your most humble faithful custodian-guardian(1<sup>st</sup> name)  
Thanks' you for the Survival of Humankind  
I endeavour to help my body, specie & community survive  
I shall make survival my no.1 priority  
Please support my efforts to survive  
For the Glory of **1GOD** & the Good of Humankind



This prayer is used on Survival day (C-G Kalender) !



Fun-Day themes\* that are important to environmentalist:

**Pollution Day 4.2.7 ~ Defoliant Day 6.2.7 ~ Holocaust Day 8.2.7**  
**Habitat Day 9.1.7 ~ Survival Day 11.1.7 ~ Pet Day 11.3.7**  
**Good health Day 12.1.7 Addictions Day 12.2.7 Shrub Day 13.1.7**  
**Tree Day 13.3.7** Fun-Day themes cater for a community need to  
celebrate be shamed & remember. \*New-Age time-management

Burning, garbage, polluting, environmental-vandalism are not only a threat to this generation, next generation but coming generations. Children are to report parents that burn, dump garbage, create too much garbage, pollute air, soil, water, are environmental vandals, destroying their Childrens future. Parents hold accountable, remove & **MS R7** politicians that allow or are responsible for: Burning, garbage, polluting, environmental vandalism!

**Non-breathable Air You have 4 minutes to live**

**No-liquid intake. You have 4 days to live!**

**Custodian-Guardian live in harmony with 1 GOD's crations!**

Many Environmentalist have pet causes. They spend passion, time & money. All very nice, makes a person feel good.

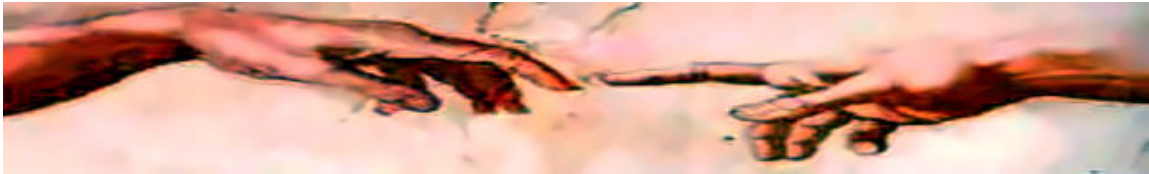
The narrow confines of most causes. Results in no headway in major human survival causes: **Pollution** (air, soil, water), **Violence** (home, community, global), **Wealth-Apartheid** (estate passing on position,



power, wealth; parasitic, predatory, profiteering).

Only an organization with moral strength, endless perseverance & **1 GOD** given solutions can assure human survival.

**Join Us! > Be Green! > Be a Custodian!**



Custodian Guardian also adhere to Chain of Evil, No Violence-Concept, Economic concept, 7Scrolls, N-At-m.

End