

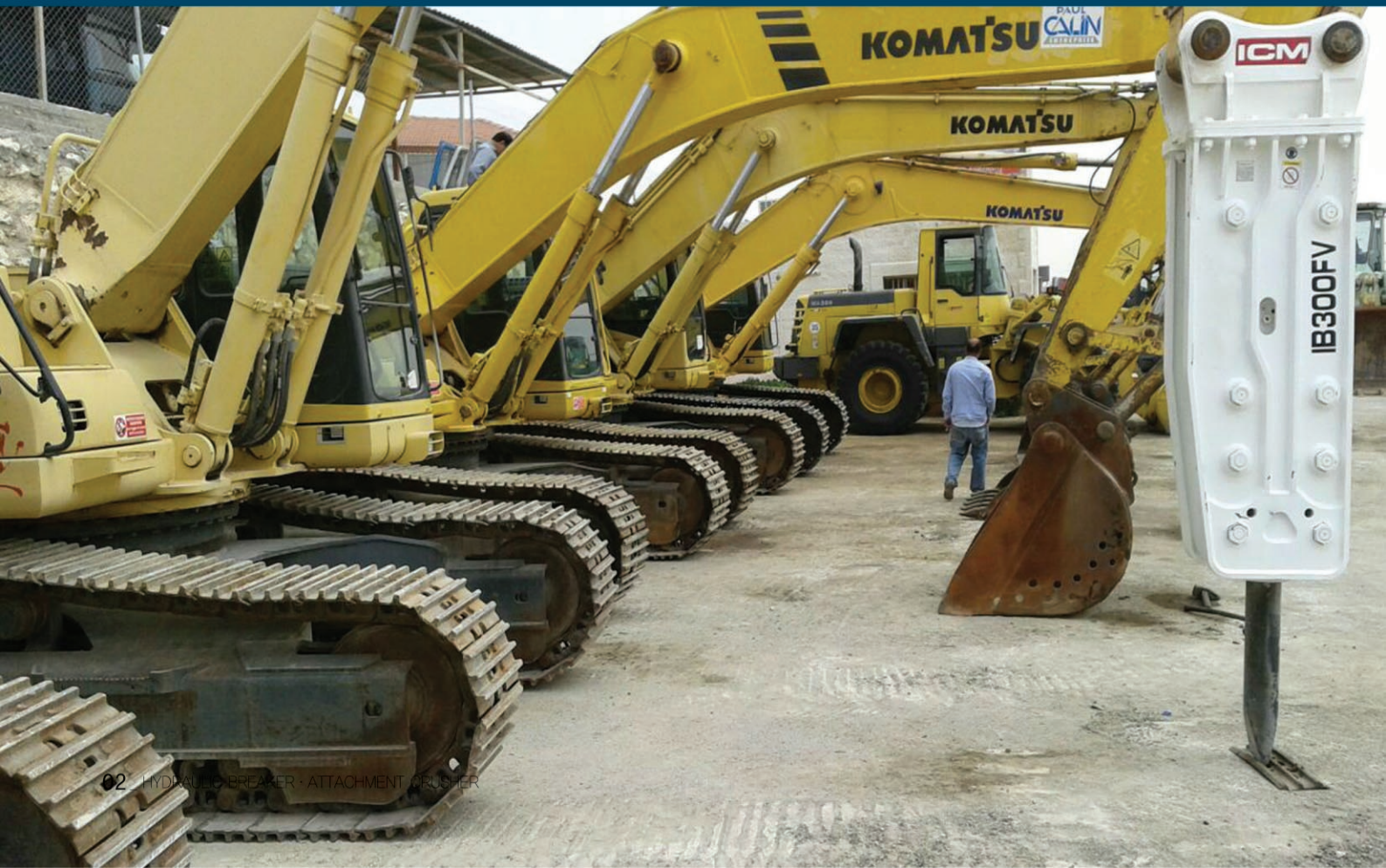
HYDRAULIC BREAKER ATTACHMENT CRUSHER





ICM “V-Type” Breaker Series

- Ready to work under any working sites!
- High quality & pround durability!
- Priority system for customer satisfaction!



TOP (OPEN) TYPE



► Specification

OUT WARD TYPE	Unit	IB 180FV	IB 200FV	IB 300FV	IB 400FV
Selection of Machine	ton	13-18	18-28	28-35	36-45
	lb	28660-39683	39683-61729	61729-77162	79366-99208
Operation Weight	kg	1230	1740	2420	3020
	lb	2712	3836	5335	6657
Weight of Main Body	kg	510	750	950	1400
	lb	1124	1654	2094	3087
Height(Incl. Tool)	mm	2031	2327	2500	2950
	inch	81	93	100	118
Required Oil Flow Range	l/min	90-120	130-150	150-190	190-250
	gal/min	24-32	34-40	40-50	50-66
Operating Pressure	bar	160-180	160-180	160-180	160-180
	psi	2321-2610	2321-2610	2321-2610	2321-2610
Impact Rate	bpm	400-900	400-800	350-750	250-500
	mm	120	135	150	160
Rod / Chisel	inch	4,724	5,315	5,906	6,299
	mm	ø 19	ø 25	ø 25	ø 32
Hose Diameter	inch	3/4	1	1	1 1/4
	kg,m	581	724	1061	1479
Impact Energy Class	joule	5,700	7,100	10,400	14,500
	ft,lb	4204	5237	7671	10695
Back Head Gas Pressure	bar(psi)	6(87)	6(87)	6(87)	6(87)

* Specifications and features are subject to change without prior to better improvement in quality.



► Specification

IN WARD TYPE	Unit	IB 100V	IB 200V	IB 300V	IB 350V	IB 400V	IB 430V	IB 450V	IB 500V	IB 600V	IB 700V	IB 800V	IB1000V	IB1200V	IB1300V	IB1500V
Selection of Machine	ton	0.8-2.5	1.2-3.0	2.5-4.5	4-7	4-8	8-12	10-14	11-16	15-18	18-25	25-32	32-38	38-42	40-48	48-55
	lb	1763-5511	2645-6613	5511-9920	8819-15432	8819-17637	17637-26456	22046-30865	24250-35274	33069-39683	39683-55116	61729-70548	70548-83776	83776-92594	88185-105822	105822-121254
Operation Weight	kg	72	92	150	250	275	380	500	795	1250	1450	1780	2100	2700	2995	4100
	lb	158	202	330	550	605	838	1100	1749	2750	3190	3916	4620	5940	6589	9020
Weight of Main Body	kg	53	65	86	122	151	210	280	471	652	754	911	1072	1283	1443	1924
	lb	107	131	174	246	305	424	566	951	1317	1523	1840	2165	2592	1915	3886
Height(Incl. Tool)	mm	1135	1262	1342	1472	1600	1860	2101	2326	2604	2691	2828	3055	3255	3395	3709
	inch	45	50	53	58	63	73	83	92	103	106	111	120	128	134	146
Required Oil Flow Range	l/min	15-25	20-30	25-50	30-60	40-70	50-90	60-100	80-110	90-120	100-150	120-180	150-210	180-240	200-260	210-290
	gal/min	4-8	5-10.5	6.5-13	8-16	10.5-18.5	13-24	16-16.5	21-29	24-32	27-40	32-48	40-56	48-63	51-69	55-77
Operating Pressure	bar	90-120	90-120	90-120	100-130	110-140	120-150	130-160	150-170	150-170	160-180	160-180	160-180	160-180	160-180	160-180
	psi	1280-1707	1280-1707	1280-1707	1422-1849	1565-1991	1707-2134	1849-2276	2134-2418	2134-2418	2276-2560	2276-2560	2276-2560	2276-2560	2276-2560	2276-2560
Impact Rate	bpm	800-1400	700-1200	600-1100	500-1000	500-900	400-800	400-800	350-700	350-650	350-600	350-500	300-450	300-450	250-400	200-350
	mm	40	45	53	60	68	75	85	100	125	135	140	150	155	155	175
Rod / Chisel	inch	1,57	1,811	2,087	2,362	2,677	2,953	3,346	3,937	4,921	5,315	5,511	5,905	6,102	6,102	6,889
	mm	ø 12	ø 12	ø 12	ø 12	ø 12	ø 12	ø 19	ø 19	ø 25	ø 25	ø 25	ø 25	ø 32	ø 32	ø 32
Hose Diameter	inch	1/2	1/2	1/2	1/2	1/2	1/2	3/4	3/4	1	1	1	1	1 1/4	1 1/4	1 1/4
	kg,m	46	59	97	112	148	214	265	428	591	688	826	1004	1101	1224	1927
Impact Energy Class	joule	450	580	950	1,100	1,450	2,100	2,600	4,200	5,800	6,750	8,100	9,850	10,800	12,000	18,900
	ft,lb	332	428	701	811	1,069	1,549	1,918	3,098	4,278	4,979	5,974	7,265	7,966	8,851	13,940
Back Head Gas Pressure	bar(psi)	16(232)	16(232)	16(232)	16(232)	16(232)	16(232)	16(232)	16(232)	16(232)	16(232)	16(232)	16(232)	16(232)	16(232)	16(232)

* Specifications and features are subject to change without prior to better improvement in quality.



ICM “S-Type” Breaker Series

- Noise reduction technology!
- Friendly environment!
- High quality & proud of durability!



SILENCE (BOX) TYPE



► Specification

OUT WARD TYPE	Unit	IB 180FS	IB 200FS	IB 300FS	IB 400FS
Selection of Machine	ton	13-18	18-28	28-35	36-45
	lb	28660-39683	39683-61729	61729-77162	79366-99208
Operation Weight	kg	1310	1840	2540	3110
	lb	2888	4057	5600	6856
Weight of Main Body	kg	510	750	950	1400
	lb	1124	1654	2094	3087
Height(Incl. Tool)	mm	2031	2327	2500	2950
	inch	81	93	100	118
Required Oil Flow Range	l/min	90-120	130-150	150-190	190-250
	gal/min	24-32	34-40	40-50	50-66
Operating Pressure	bar	160-180	160-180	160-180	160-180
	psi	2321-2610	2321-2610	2321-2610	2321-2610
Impact Rate	bpm	400-900	400-800	350-750	250-500
	mm	120	135	150	160
Rod / Chisel	inch	4,724	5,315	5,906	6,299
	mm	ø 19	ø 25	ø 25	ø 32
Hose Diameter	inch	3/4	1	1	1 1/4
	kg,m	581	724	1061	1479
Impact Energy Class	joule	5,700	7,100	10,400	14,500
	ft,lb	4204	4237	7671	10695
Back Head Gas Pressure	bar(psi)	6(87)	6(87)	6(87)	6(87)

* Specifications and features are subject to change without prior to better improvement in quality.



► Specification

IN WARD TYPE	Unit	IB 100S	IB 200S	IB 300S	IB 350S	IB 400S	IB 430S	IB 450S	IB 500S	IB 600S	IB 700S	IB 800S	IB1000S	IB1200S	IB1300S	IB1500S
Selection of Machine	ton	0.8-2.5	1.2-3.0	2.5-4.5	4-7	4-8	8-12	10-14	11-16	15-18	18-25	25-32	32-38	38-42	40-48	48-55
	lb	1763-5511	2645-6613	5511-9920	8819-15432	8819-17637	17637-26456	22046-30865	24250-35274	33069-39683	39683-55116	61729-70548	70548-83776	83776-92594	88185-105822	105822-121254
Operation Weight	kg	102	126	165	265	295	395	571	861	1296	1500	1825	2145	2745	3045	4155
	lb	225	278	364	584	650	871	1259	1898	2857	3306	4023	4729	6052	6713	9160
Weight of Main Body	kg	53	65	86	122	151	210	280	471	652	754	911	1072	1283	1443	1924
	lb	107	131	174	246	305	424	566	951	1317	1523	1840	2165	2592	1915	3886
Height(Incl. Tool)	mm	1135	1262	1342	1472	1600	1860	2101	2326	2604	2691	2828	3055	3255	3395	3709
	inch	45	50	53	58	63	73	83	92	103	106	111	120	128	134	146
Required Oil Flow Range	l/min	15-25	20-30	25-50	30-60	40-70	50-90	60-100	80-110	90-120	100-150	120-180	150-210	180-240	200-260	210-290
	gal/min	4-8	5-10.5	6.5-13	8-16	10.5-18.5	13-24	16-16.5	21-29	24-32	27-40	32-48	40-56	48-63	51-69	55-77
Operating Pressure	bar	90-120	90-120	90-120	100-130	110-140	120-150	130-160	150-170	150-170	160-180	160-180	160-180	160-180	160-180	160-180
	psi	1280-1707	1280-1707	1280-1707	1422-1849	1565-1991	1707-2134	1849-2276	2134-2418	2134-2418	2276-2560	2276-2560	2276-2560	2276-2560	2276-2560	2276-2560
Impact Rate	bpm	800-1400	700-1200	600-1100	500-1000	500-900	400-800	400-800	350-700	350-650	350-600	350-500	300-450	300-450	250-400	200-350
	mm	40	45	53	60	68	75	85	100	125	135	140	150	155	155	175
Rod / Chisel	inch	1.57	1.811	2.087	2.362	2.677	2.953	3.346	3.937	4.921	5.315	5.511	5.905	6.102	6.102	6.889
	mm	ø 12	ø 12	ø 12	ø 12	ø 12	ø 12	ø 19	ø 19	ø 25	ø 25	ø 25	ø 25	ø 32	ø 32	ø 32
Hose Diameter	inch	1/2	1/2	1/2	1/2	1/2	1/2	3/4	3/4	1	1	1	1	1 1/4	1 1/4	1 1/4
	kg,m	46	59	97	112	148	214	265	428	591	688	826	1004	1101	1224	1927
Impact Energy Class	joule	450	580	950	1,100	1,450	2,100	2,600	4,200	5,800	6,750	8,100	9,850	10,800	12,000	18,900
	ft,lb	332	428	701	811	1,069	1,549	1,918	3,098	4,278	4,979	5,974	7,265	7,966	8,851	13,940
Back Head Gas Pressure	bar(psi)	16(232)	16(232)	16(232)	16(232)	16(232)	16(232)	16(232)	16(232)	16(232)	16(232)	16(232)	16(232)	16(232)	16(232)	16(232)

* Specifications and features are subject to change without prior to better improvement in quality.



ICM “SL, BL–Type” Breaker Series

- Advanced technology!
- Excellent performance!
- Easier and faster maintenance!



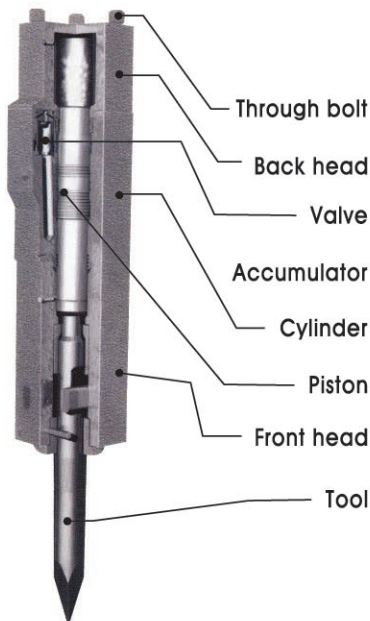


► Specification

OUT WARD TYPE	Unit	IB 300SL	IB 400SL	IB 400BL	IB 430BL	IB 450BL
Selection of Machine	ton	2,5-4,5	4-8	4-8	8-12	10-14
	lb	5511-9920	8819-17637	8819-17637	17637-26456	22046-30865
Operation Weight	kg	180	430	290	400	550
	lb	396	948	639	808	1111
Weight of Main Body	kg	86	151	151	210	280
	lb	174	305	305	424	566
Height(Incl. Tool)	mm	1300	1500	1347	1518	1737
	inch	52	59	53	60	68
Required Oil Flow Range	l/min	25-50	40-70	40-70	50-90	60-100
	gal/min	6,5-13	10,5-18,5	10,5-18,5	13-24	16-16,5
Operating Pressure	bar	90-120	110-140	110-140	120-150	130-160
	psi	1280-1707	1565-1991	1565-1991	1707-2134	1849-2276
Impact Rate	bpm	600-1100	500-900	500-900	400-800	400-800
	mm	53	68	68	75	85
Rod / Chisel	inch	2,087	2,677	2,677	2,953	3,346
	mm	∅ 12	∅ 12	∅ 12	∅ 12	∅ 19
Hose Diameter	kg.m	97	148	148	214	265
	joule	950	1,450	1,450	2,100	2,600
Impact Energy Class	ft.lb	701	1,069	1,069	1,549	1,918
	bar(pos)	16(232)	16(232)	16(232)	16(232)	16(232)

* Specifications and features are subject to change without prior to better improvement in quality.

Inward valve type



Reinforcement



Auto Grease System

Outward valve type

The longest service life due to applied heat treatment.

The energy of piston stroke is accumulated due to charged nitrogen gas.

As a valve system, easier and quicker repair and/or replacement.

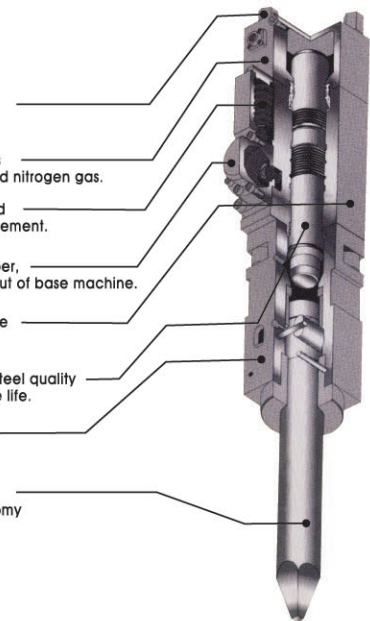
As high pressure surge damper, it's for protecting pump output of base machine.

Easy and lowest maintenance cost due to minimized parts.

The dimension and special steel quality of piston exert longer service life.

The front cover can easily be replaced.

The working tool guarantees the performance and economy of ICM hydraulic breaker.



ICM TOTAL ATTACHMENT Series

- Best Work Efficiency!
- Simple & Easy maintenance!
- Excellent Durability!

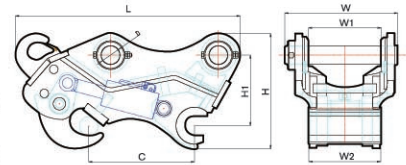


Quick-Coupler



Benefits

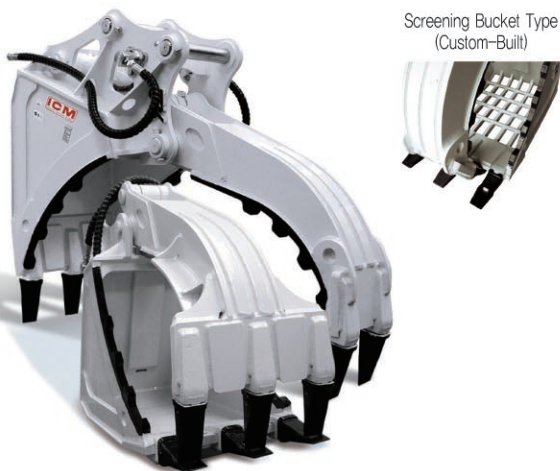
- The strongest durability on the same class prolongs its life.
- Double safety device
- Shorten the working hours with fast removable coupler
- Enough room for the safety pin



Decription	Unit	ISQ30	ISG60	ISQ80	ISQ100	ISQ140	ISQ170	ISQ200
Excavator	ton	5-8	11-13	18-22	23-30	31-36	37-42	43-50
Operating Weight	kg	60-70	170-190	330-340	510-528	630-636	670-755	760-890
Length (L)	mm	585	824	970	1057-1072	1076-1094	1208-1238	1253-1285
Height (H)	mm	293	391	491	552-557	587-610	613-627	628-662
Width (W)	mm	259-269	408-423	477-496	535-584	586-624	624-664	661-726
Center (C)	mm	255-290	375-400	450-480	487-540	510-580	533-600	556-612

*It can be changed for improving product's performance.

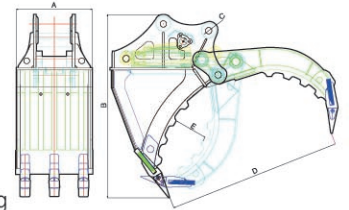
Fixed Stone Grapple / Waste Grapple



Screening Bucket Type
(Custom-Built)

Benefits

- Handling of seawalls, stones and many others are all available.
- Multipurpose function to prevent slipping
- Available to work with many kinds of stone (Option)
- Available to classify soil cement and stone (Option)



Decription	Unit	ISG20	ISG30	ISG40	ISG60	ISG80	ISG100	ISG140	ISG200
Excavator	ton	3-4	5-7	6-9	9-14	18-25	27-32	33-39	45-50
Operating Weight	kg	154	305	471	730	1430	1860	2500	3110
Width (W)	mm	300	430	600	636	802	833	944	964
Height (B)	mm	893	1153	1340	1545	1938	2060	2270	2528
Pin Diameter (C)	mm	35	45	50	65	70-80	80-90	100	110-120
Max. Opening (D)	mm	818	1183	1380	1550	2220	2235	2520	2627
Min. Opening (E)	mm	107	164	172	220	309	320	422	470
Oil Pressure	kg/cm ²	110-130	110-140	110-160	150-170	160-180	160-180	180-210	180-210
Center (C)	kg/cm ²	170	170	180	190	200	220	230	250

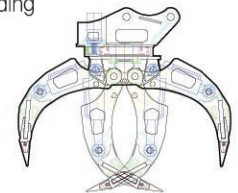
*It can be changed for improving product's performance.

Rotating Stone Grapple



Benefits

- Carrying rocks and excellent performance in loading
- Strong power and a crash-cushion on high pressure cylinder
- Excellent abrasion resistance and high gradient prolong its life
- Swing bearing shock absorber
- The safety check valve in cylinder prevents the grabbed material from falling down.



Model	Excavator ton	Operating Weight kg	Cyl. Oil Pressure kg/cm ²	Cyl. Max Pressure kg/cm ²	Oil Supply l/min	Motors Model	Motor daNm	Max. Pressure bar	Max speed rpm	Max Oil flow l/min
IRSG30	4-7	365	120-190	250	30-50	MR315CU	61	225	240	75
IRSG60	11-16	850	150-200	250	90-120					
IRSG80	18-22	1,960	160-240	260	100-150	MT500	160	300	285	150
IRSG100	28-32	2,100	160-240	260	130-200					

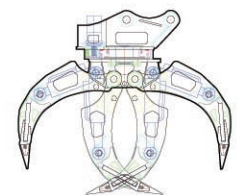
*It can be changed for improving product's performance.

Rotating Wood Grapple



Benefits

- Outstanding performance on loading at the logging place
- High use in various works
- During the swing work, it prevents the grabbed material from falling down by grabbing more safety even when the machine is stopped.



Model	Excavator ton	Operating Weight kg	Cyl. Oil Pressure kg/cm ²	Cyl. Max Pressure kg/cm ²	Oil Supply l/min	Motors Model	Motor daNm	Max. Pressure bar	Max speed rpm	Max Oil flow l/min
IRWG30	4-7	365	120-190	250	30-50	MR315CU	61	225	240	75
IRWG60	11-16	850	150-200	250	90-120					
IRWG80	18-22	1,960	160-240	260	100-150	MT500	160	300	285	150
IRWG100	28-32	2,100	160-240	260	130-200					

*It can be changed for improving product's performance.

▶ Compactor



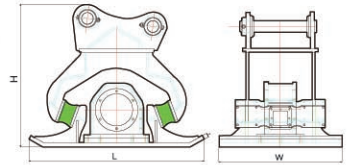
All-in-one block oil flow control valve



Proper high-quality oil pressure motor to all types of models

Benefits

- Proper high-quality oil pressure motor to all types of models
- All-in-one block oil flow control valve
- Highly effective in hardening the narrow ditch



Model	Excavator ton	Operating Weight kg	Measurement (L×W×T)mm	Height (H)	Pressure (kg/cm ²)	Capacity (cc/rev)	Oil Supply l/min	Vibration (rpm)	Impulse Force (ton)
ICT20	5-7	350	920×530×25	740	150-210	30	40-50	600-2000	5
ICT30	7-9	500	950×550×25	800	150-210	55	45-75	600-2000	7
ICT40	12-15	650	1145×700×28	850	150-210	63	85-105	600-2000	7
ICT60	16-22	900	1250×850×30	975	150-210	80	120-170	600-2000	13
ICT80	28-32	1150	1350×950×32	1050	180-210	100	120-170	600-2000	15
ICT100	32-40	1300	1450×1050×35	1100	180-210	100	120-170	600-2000	17

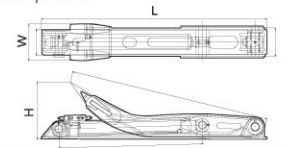
*It can be changed for improving product's performance.

▶ Multi-Purpose Grapple



Benefits

- Can be used for various purposes in many work places
- Excellent work performance and convenient function
- Safety amount check valve
- A crash-cushion device
- Simplifying procedures of changing structure



Model	Excavator (ton)	Operating Weight (kg)	Length L (mm)	Width (W) (mm)	Height (H) (mm)
IPG30	4-7	110-140	1,255	235	353
IPG60	11-16	150-170	1,622	264	409

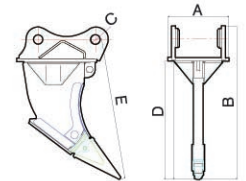
*It can be changed for improving product's performance.

▶ Ripper



Benefits

- The flat board work is available.
- Large ripper tooth prevents it from breaking.
- High quality and strengthened performance



Model	Excavator (ton)	Operating Weight (kg)	A (mm)	B (mm)	C (mm)	D (mm)	E (mm)
IRP30	5-7	93	260-270	717	45	569	674
IRP60	12-15	275	398	1067	65	842	1010
IRP80	18-22	440	460-480	1167	70-80	894	1105
IRP100	28-31	625	530-590	1358	80-90	1045	1255
IRP140	34-38	885	610-630	1626	90-100	1259	1515
IRP170	39-43	950	620-650	1626	100-110	1259	1520
IRP200	45-50	1065	660-720	1679	110-120	1270	1560

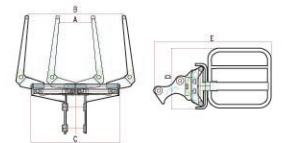
*It can be changed for improving product's performance.

▶ Bale Grapple



Benefits

- The highest performance on the same class
- The pressure of excavator makes it available to load/unload two-row.



Model	Equipment Weight (ton)	A	B	C	D	E	Using Pressure	Weight(kg)
IBG30	5-7	515	1,530	1,460	996	1,920	40-180	280
IBG60	12-15	515	1,530	1,460	996	1,780	40-200	294

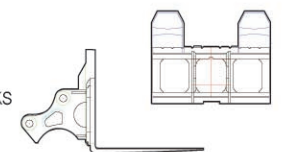
*It can be changed for improving product's performance.

▶ Lifting Fork



Benefits

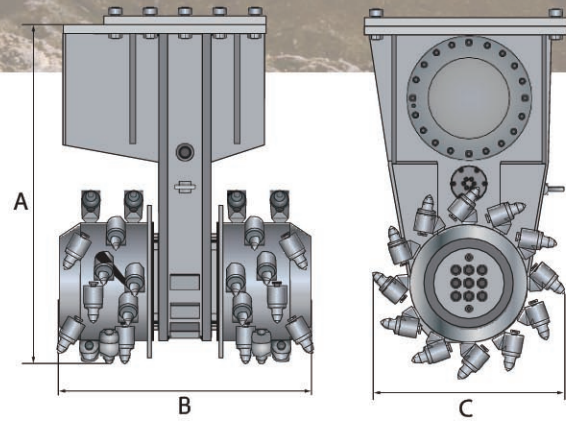
- Available to load/unload palletized materials such as building materials and bricks
- Low price and reliable quality
- Available to adjust distances of three-row



Model	Weight	Width (mm)	Fork Using Weight (kg)	Length (mm)	Carrier (ton)
ILF30	190	880	2,500	1,020	4-7
ILF60	235	948	2,500	1,070	11-16
ILF80	600	1,300	5,000	1,200	18-26
ILF100	1,100	1,650	7,000	1,200	29-35

*It can be changed for improving product's performance.

▶ Drum Cutter

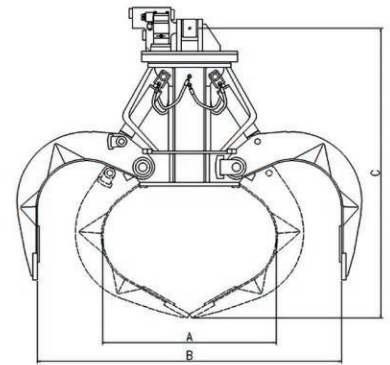


▶ Technical Data

IN WARD TYPE	Unit	IDRT 30	IDRT 40	IDRT 70	IDRT 80	IDRT 100	IDRT 150
Carrier Weight Class	ton	3~7	8~15	10~18	20~32	25~40	35~50
Service Weight	kg	390	420	800	1,350	1,450	1,500
Oil Flow Rate	l/min	49~90	75~124	109~170	190~320	190~320	275~410
Max. Operating Pressure	bar	350	350	350	350	350	350
Rotational Speed	rpm	90~160	80~135	60~110	60~90	50~90	55~85
Max. Cutting Force at 350bar	N	17,800	23,200	36,200	58,200	69,900	81,800
Max. Torque at 350bar	Nm	3,150	5,200	10,400	19,500	23,400	27,800
Max. Rock hardness	Mpa	25	40	50	70	80	100
Length of Drum Grinder	A	740	740	990	1,200	1,200	1,300
Width of Drum Head	B	615	660	730	880	920	950
Diameter of Drum Head	C	370	370	560	670	670	710
Number of Picks	PC	64	64	48	48	48	56
Pick Shank Diameter	mm	20	20	25	30	30	30

* Specifications are subject to change without prior notice for improvement of performance.

▶ Orange Grapple



► Technical Data

Model	A		B		C		Capacity		Excavator Weight		Unit Weight	
	mm	in	mm	in	mm	in	yd ³	m ³	Lbs.	Ton	Lbs.	Ton
IOG-35	720	28,4	1538	60,6	1000	39,4	0,3	0,2	11023-17637	5-8	992	0,4
IOG-40	780	30,7	1620	63,8	1000	39,4	0,4	0,3	15432-22046	7-10	1102	0,5
IOG-60	896	35,2	1650	64,9	1640	65	0,8	0,6	26455-35273	12-16	1980	1,0
IOG-80	1060	42	1800	71	1820	71	1,0	0,8	39683-52910	18-24	2600	1,3
IOG-100	1150	45,2	2014	79	1937	76,2	1,3	1,0	27320-66138	26-30	3100	1,5
IOG-120	1190	47	2160	85	1961	77,2	1,6	1,2	66138-70547	30-32	3400	1,7
IOG-150	1250	49,2	2360	93	2500	98,4	2,0	1,5	75000-88184	34-40	4400	2,0
IOG-200	1482	58,3	2999	118	2714	107	2,6	2,0	88184-99208	40-45	6060	2,7
IOG-250	1651	65	3151	124	2845	112	3,3	2,5	99208-110231	45-50	6840	3,1
IOG-350	1905	75	3481	137	3024	119	4,6	3,5	132277-143300	60-65	9800	4,4
IOG-500	2346	92,3	3736	147	3660	144	6,5	5,0	154323-169755	70-77	15400	7,0

* Specifications are subject to change without prior notice for improvement of performance.

▶ Hydraulic Ripper



▶ Technical Data

IN WARD TYPE	Unit	IV 10	IV 15	IV 20	IV 25	IV 30	IV 35	IV 50	IV 55
Hydraulic Excavator	ton	8-12	14-18	18-26	25-30	28-35	30-42	42-55	55-70
Operating Weight	kg	1,400	1,500	2,500	260	3,300	3,400	5,600	5,800
Hydraulic Working Pressure	bar	160-80	180-200	180-200	200-220	220-240	220-240	260-280	260-280
Hydraulic Return Pressure	bar	6	6	6	6	6	6	6	6
Hydraulic Oil Flow	l/min	90	100	160	180	180	200	250	280
Case Drain Maximum Pressure	bar	4	4	4	4	4	4	4	4
Frequency	l/min	1400	1400	1400	1300	1300	1200	1000	1000
Dimensions (cm)	L×W×H	165×50×160	165×50×160	240×78×175	240×78×175	280×85×180	280×85×180	310×90×190	310×90×190
Accumulator Pressure	Mpa	0,5	0,5	0,5	0,5	0,5	0,5	0,4	0,4

※ Specifications are subject to change without prior notice for improvement of performance.

▶ Fixed Pulverizer



Model	IP150	IP200	IP250	IP300	IP500
Weight	890	1500	1750	2350	4200
Opening width of jaw(mm)	0 - 800	0 - 870	0 - 980	0 - 1120	0 - 1280
Operating pressure(kg/cm ²)	260	280	300	300	300
Applicable Excavator(ton)	13 - 18	20 - 22	22 - 25	28 - 37	42 - 47

*This specification can be modified depends on the quality improvement etc.



▶ One Cylinder Attachment



IMS200



IMD200



IMS300

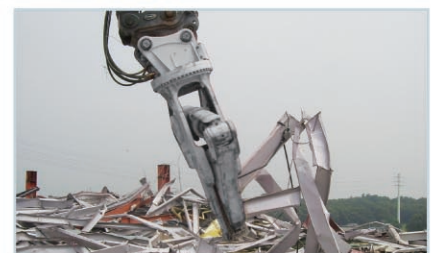


IMD300



Model	Unit	IMS200	IMP200	IMD200	IMS300	IMP300	IMD300
Operating Weight	kg	2,000	2,000	2,000	2,450	2,600	2,450
	lb	4,409	4,409	4,409	5,401	5,732	5,401
Overall Length	mm	2,181	2,386	2,321	2,174	2,627	2,529
	inch	85,87	93,94	91,37	85,59	103,43	99,57
Overall Width	mm	1,071	1,367	1,106	1,158	1,443	1,213
	inch	42,17	53,82	43,54	45,59	56,81	47,56
Max. Opening Width	mm	507	886	645	571	957	731
	inch	19,96	34,88	25,39	22,48	37,68	28,78
Cutter Length	mm	500	200	400	600	300	500
	inch	19,69	7,87	15,74	23,62	11,81	19,68
Crushing Force	ton(A)		53	61		73	82
	ton(B)		72			102	
	ton(C)		97			134	
	ton(D)		145			201	
Cutting Force	ton	172	165	172	256	229	256
Operating pressure	kg/cm ²		300			320	
	psi		4,226			4,550	
Oil Flow Rate	LPM		200~250			250~300	
	GPM		52,8~66,1			66,1~79,2	
Suitable Excavator	ton		18~26			26~32	
Speed Up Valve							Option
Motor setting Pressure	kg/cm ²						160
	psi						2,275
Motor Oil Flow Rate	LPM						36~40
	GPM						9,5~10,5
Revolving Speed	RPM						13~15

*It can be changed for improving product's performance.



▶ Two Cylinder Attachment



IMS201



IMC201



IMP201



IMD201



Model	Unit	IMS201	IMC201	IMP201	IMD201
Operating Weight	kg	1,760	1,680	1,760	1,760
	lb	3,880	3,704	3,880	3,880
Overall Length	mm	2,258	2,218	2,197	2,197
	inch	88,89	83,78	86,5	86,5
Overall Width	mm	1,294	1,354	1,541	1,541
	inch	50,94	53,31	60,67	60,67
Max. Opening Width	mm	522	886	872	872
	inch	20,55	34,88	34,33	34,33
Cutter Length	mm	120 x 4ea	180	180	180 x 2ea
	inch	4,72 x 4ea	7,09	7,09	7,09 x 2ea
Crushing Force	ton(A)	56	57	51	51
	ton(B)		85	61	
	ton(C)			78	
	ton(D)			95	
	ton(E)				
Cutting Force	ton(A)	73	183	183	183
	ton(B)	94			127
	ton(C)	127			
	ton(D)	200			
Operating pressure	kg/cm ²			300	
	psi			4,226	
Oil Flow Rate	LPM			200-250	
	GPM			52,8-66,1	
Suitable Excavator	ton			18-26	
Speed Up Valve				Option	
Motor setting Pressure	kg/cm ²			160	
	psi			2,275	
Motor Oil Flow Rate	LPM			36-40	
	GPM			9,5-10,5	
Revolving Speed	RPM			13-15	





ICM Heavy Industries Co., Ltd.

Head Office

143-1 Haechang-ri Paltan-myun, Hwaseong-si Gyunggi-do, Korea

TEL : -82-31-353-4205 FAX : -82-31-353-5720

E-mai : cheong@icm-tool.com

steven@icm-tool.com

www.ICM-TOOL.com

