

## Nine Minimum Elements of a Watershed Protection Plan

EPA Handbook for Developing Plans to Restore and Protect Our Waters

<http://www.epa.gov/polluted-runoff-nonpoint-source-pollution/handbook-developing-watershed-plans-restore-and-protect>

- a) Identification of causes that will need to be controlled to achieve the load reductions described in (b)
- b) Estimates of load reductions expected for the management measures described in (c)
- c) Description of management measures that will need to be implemented to achieve load reductions described in (b)**
- d) Estimate of technical and financial assistance needed to implement this plan**
- e) Information/education component that will be used to enhance public understanding of this plan
- f) Schedule for implementing management measures described in (c)
- g) Description of interim, measurable milestones for determining whether management measures described in (c) are being implemented
- h) Set of criteria that can be used to determine whether load reductions described in (b) are being achieved
- i) Water quality monitoring component to evaluate effectiveness of implementation measured against the established criteria described in (h)

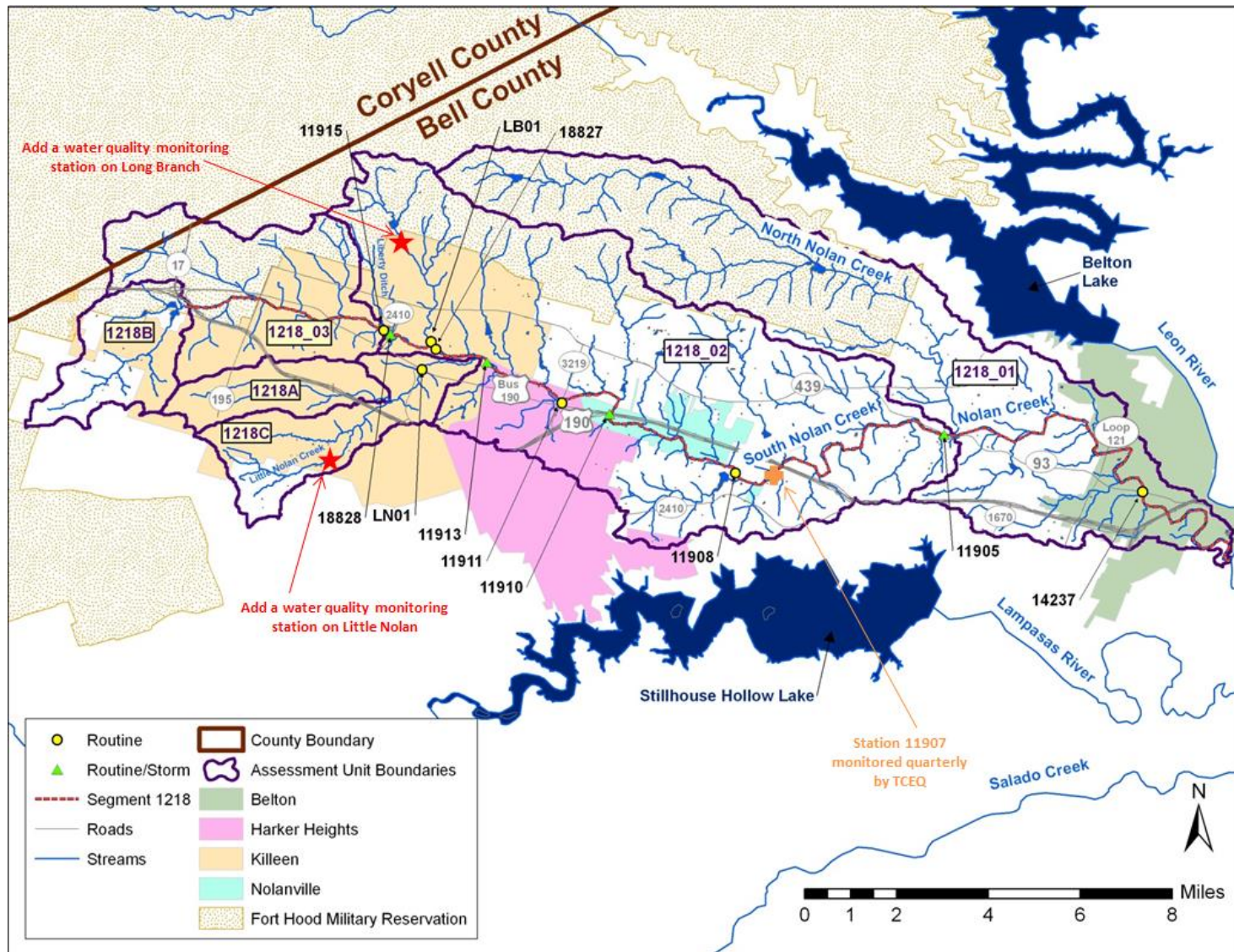
# Nolan Creek/South Nolan Creek WPP Timeline



Example Educational & Outreach Activities from the report “Outreach and Education Strategy for the Nolan Creek/South Nolan Creek Watershed”

Outreach Activity	Host &/or Delivery Agency	Proposed Number of Programs or Items		
		Years 1-3	Years 4-6	Years 7-10
<b>Nolan Creek Partnership Outreach - Awareness &amp; Informational Materials</b>				
Website	Nolan Creek Partnership	1	1	1
Fact Sheet		1	1	1
Newsletters		3	3	3
Brochures		1	1	1
Fliers		4	4	4
Signage			3	3
Displays at Local Events		8	12	12
<b>Regional Nonpoint Source Pollution Educational Programs</b>				
Texas Watershed Steward Training	Nolan Creek Partnership & Cities (host) with Texas AgriLife with TWRI (delivery agency)	1		
Texas Stream Team Training	Nolan Creek Partnership & Cities (host) with Texas Stream Team (delivery agency)	2	2	2
Septic System Workshops	Nolan Creek Partnership & Cities (host) with Texas AgriLife with TWRI (delivery agency)		1	1
Riparian Proper Functioning Condition Training	Nolan Creek Partnership & Cities (host) with Texas Riparian Association (delivery agency)		1	1
Public School Educational Program	Nolan Creek Partnership & Cities (host & delivery agency)		2	2
<b>Agricultural Nonpoint Source Pollution Educational Programs</b>				
Nutrient Management	Nolan Creek Partnership (advertising & supporting) with Texas AgriLife (delivery agency)		2	2
Soil & Water Testing			2	2
Livestock Grazing Management Education			2	2
Agricultural Waste Pesticide Collection Events	Nolan Creek Partnership (hosting) with TCEQ (delivery agency)		1	1

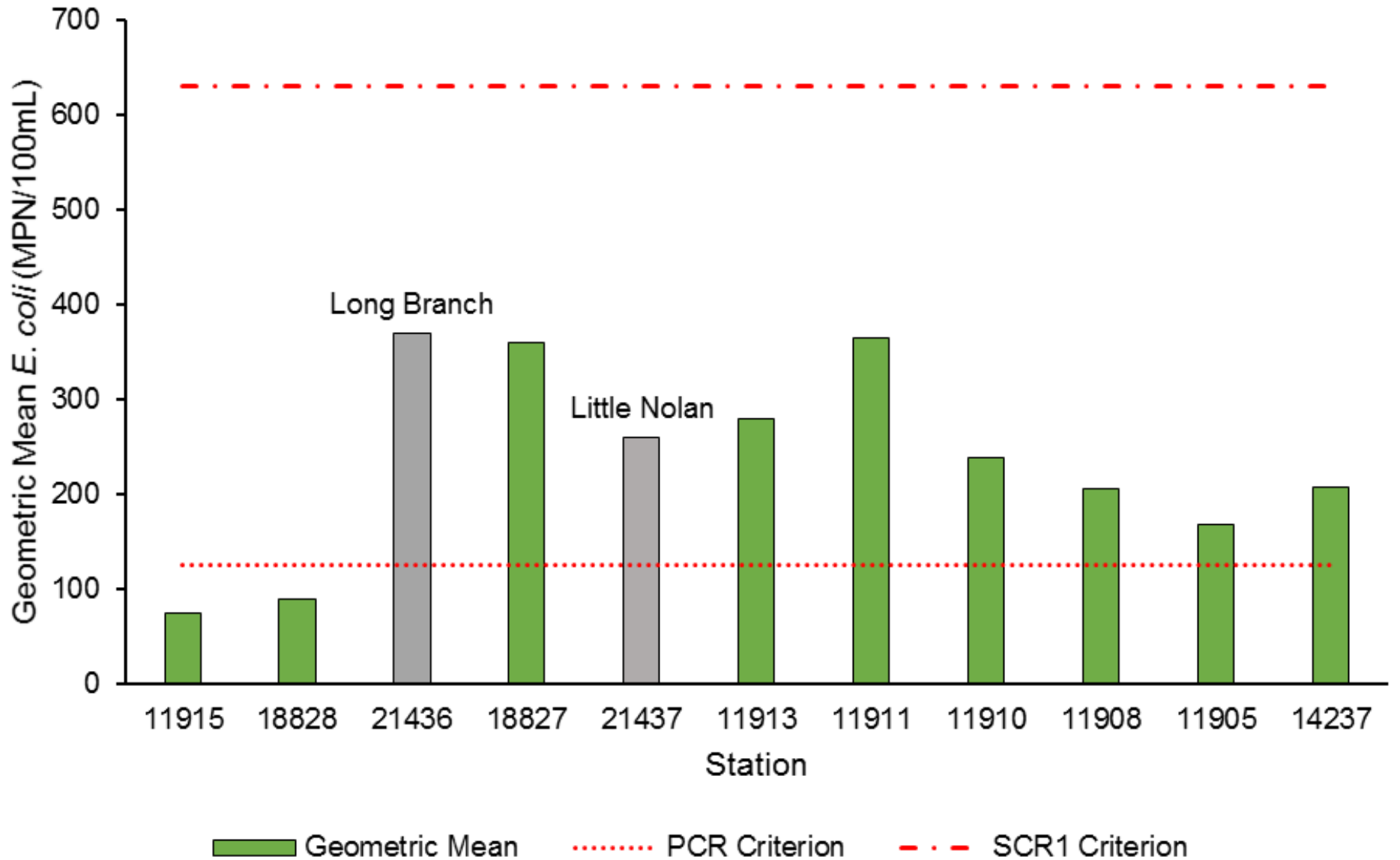
Outreach Activity	Host &/or Delivery Agency	Proposed Number of Programs or Items		
		Years 1-3	Years 4-6	Years 7-10
Lonestar Healthy Streams	Nolan Creek Partnership (hosting) with Texas AgriLife (delivery agency)		1	1
Feral Hog Management Workshop	Nolan Creek Partnership (hosting) with Texas AgriLife (delivery agency)		1	2
Whitetail Deer Management Workshop	Nolan Creek Partnership (hosting) with Texas AgriLife (delivery agency)		1	2
<b>Urban Nonpoint Source Pollution Educational Programs</b>				
Pet Waste	Nolan Creek Partnership (advertising & supporting) with Cities, Texas AgriLife, Centex Sustainable Communities Partnership (hosting)		1	1
Illegal Dumping			1	1
Fats, Oil, Grease			1	1
Sports & Athletic Field Education			1	1
Low Impact Development			1	1
Urban Nutrient Management			1	1
Stormwater BMP Demonstrations			1	1
Local Government Maintenance Education			1	1
Stream Cleanup Events	Nolan Creek Partnership & Cities (advertising & supporting) with Keep Texas Beautiful (hosting)		1	1
Recreationalist Anti-Litter Campaign	Cities & County (Hosting)		1	1
Storm Drain Inlet Marking Events	Cities (Hosting)		1	1



Location of monitoring stations during characterization project and proposed station locations.

## Description of Station Locations during Characterization Project

Station	Station Description	Latitude	Longitude	Routine	Storm
11915	South Nolan Creek upstream of WWTP outfall	31.109499	-97.704253	x	
18828	South Nolan Creek at 38th St	31.108091	-97.702156	x	x
LB01	Long Branch just upstream of crossing of South Nolan Creek at Twin Creek Dr	31.105946	-97.689364	x	
18827	South Nolan Creek at Twin Creek Dr	31.103470	-97.687851	x	
LN01	Little Nolan Creek off US 190	31.097143	-97.692268	x	
11913	South Nolan Creek at Roy Reynolds Road	31.099382	-97.671748	x	x
11911	Nolan Creek at FM 3219	31.086666	-97.648056	x	
11910	Nolan Creek at US 190	31.083099	-97.633080	x	x
11908	Nolan Creek at Levi Crossing	31.064665	-97.593330	x	
11905	Nolan Creek at Backstrom Crossing (above confluence of North Nolan Creek)	31.076666	-97.527496	x	x
14237	Nolan Creek at SH 93 in Belton	31.058743	-97.464989	x	



Geometric mean *E. coli* concentrations for routine monthly grab samples collected between May 2013 and June 2015 (n = 26). Grey bars represent tributaries flowing into South Nolan Creek. PCR indicates the criterion for primary contact recreation and SCR1 the criterion of secondary contact recreation 1.