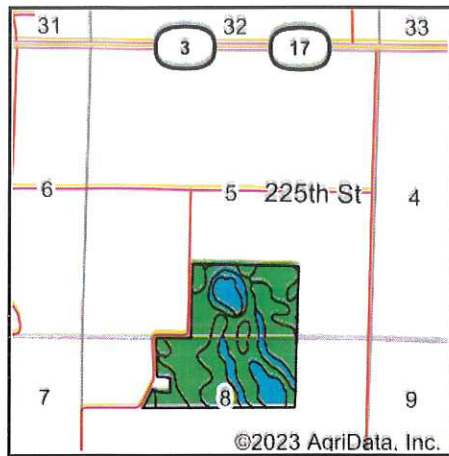
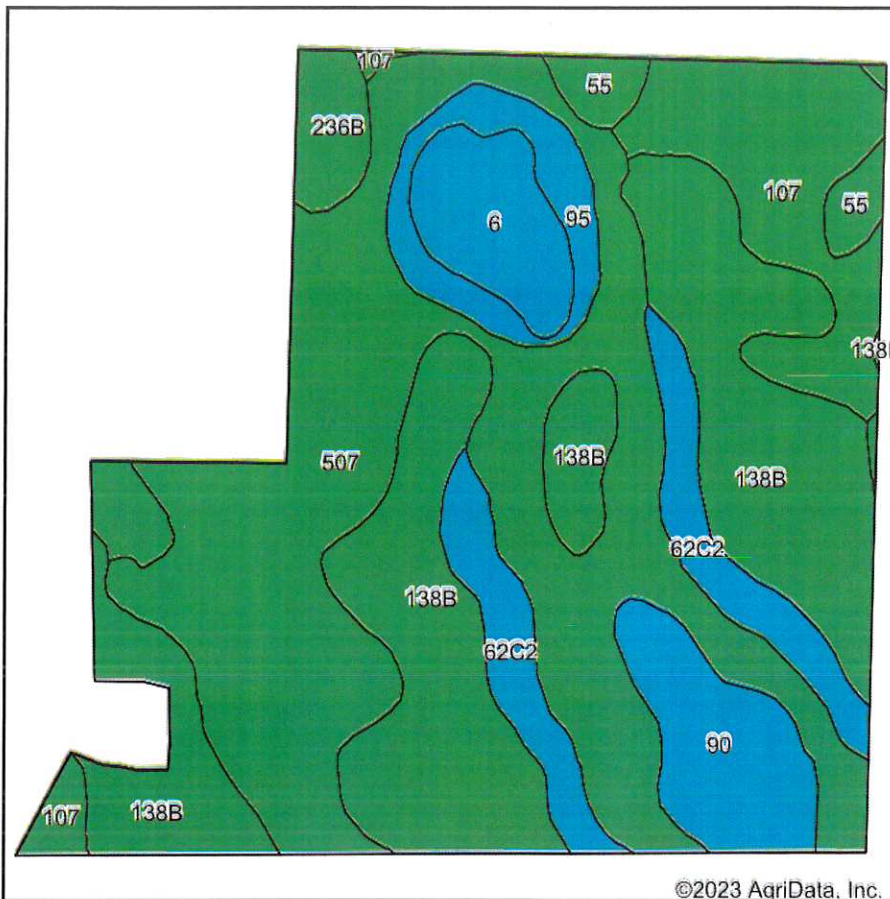


Soils Map



State: **Iowa**
 County: **Wright**
 Location: **5-91N-26W**
 Township: **Eagle Grove**
 Acres: **132.98**
 Date: **1/20/2023**



Maps Provided By
surety
 CUSTOMIZED ONLINE MAPPING
 © AgriData, Inc. 2021 www.AgriDataInc.com



Soils data provided by USDA and NRCS.

Area Symbol: IA197, Soil Area Version: 31

Code	Soil Description	Acres	Percent of field	CSR2 Legend	Water Table	Restrictive Layer	Septic Limits	Foundation Limits	Non-Irr Class *c	CSR2**	CSR	*n NCCPI Soybeans
507	Canisteo clay loam, 0 to 2 percent slopes	47.81	36.0%		0ft.	> 6.5ft.	very limited	very limited	IIw	84	78	81
138B	Clarion loam, 2 to 6 percent slopes	38.91	29.3%		2.9ft.	> 6.5ft.	very limited	somewhat limited	Ile	89	80	83
107	Webster clay loam, 0 to 2 percent slopes	12.71	9.6%		0ft.	> 6.5ft.	very limited	very limited	IIw	86	83	82
62C2	Storden loam, 6 to 10 percent slopes, moderately eroded	9.29	7.0%		4.6ft.	> 6.5ft.	somewhat limited	somewhat limited	IIle	64	51	68
90	Okoboji mucky silty clay loam, 0 to 1 percent slopes	7.27	5.5%		0ft.	> 6.5ft.	very limited	very limited	IIIw	55	59	73
6	Okoboji silty clay loam, 0 to 1 percent slopes	5.59	4.2%		0ft.	> 6.5ft.	very limited	very limited	IIIw	59	57	74
95	Harps clay loam, 0 to 2 percent slopes	4.82	3.6%		0ft.	> 6.5ft.	very limited	very limited	IIw	72	62	82
236B	Lester loam, 2 to 6 percent slopes	4.16	3.1%		3.6ft.	> 6.5ft.	very limited	somewhat limited	Ile	85	75	81
55	Nicollet clay loam, 1 to 3 percent slopes	2.42	1.8%		1.5ft.	> 6.5ft.	very limited	very limited	Iw	89	88	81
Weighted Average									2.15	81.3	74.8	*n 80.1

**IA has updated the CSR values for each county to CSR2.
 *n: The aggregation method is "Weighted Average using all components"
 *c: Using Capabilities Class Dominant Condition Aggregation Method
 Soils data provided by USDA and NRCS.