

Easy SpringPLUS

RollEase's newest
solution to
cordless shades
and ChildSafe™
products



RollEase®

Easy SpringPLUS

superior performance,
wide selection, child
and pet safe

Introducing **Easy Spring Plus**, RollEase's new solution to cordless shades and ChildSafe™ offerings.

Easy Spring Plus eliminates concerns about safety and aesthetics often associated with a dangling cord.

Easy Spring Plus complies with WCMA/ANSI federal testing standards making roller shades safe for both children and pets.

The durable construction of the **Easy Spring Plus** ensures years and years of reliable performance. Our unique cordless lift system is manufactured with just a few parts making it easy to assemble and quick to install. The **Easy Spring Plus**'s tight and secure fit into shade headers prevents shades from popping out of brackets.

Easy Spring Plus offers a variety of systems—including options on tube and spring sizes, single and dual shade applications, and adjustable wheel brackets—making it the perfect choice for any shade application in homes, offices, planes, yachts, and other recreational vehicles.

NEW!!

EASY SPRING PLUS *Performance and dependability without the cord*

- Child and pet safe
- Sleek window shade appearance
- Easy-to-assemble
- 5 systems to choose from
- Available for shades up to 96" wide
- Tube sizes available in 1-1/4" (32mm) and 1-1/2" (38mm) diameters
- 3 spring sizes for each tube size—for large to small windows

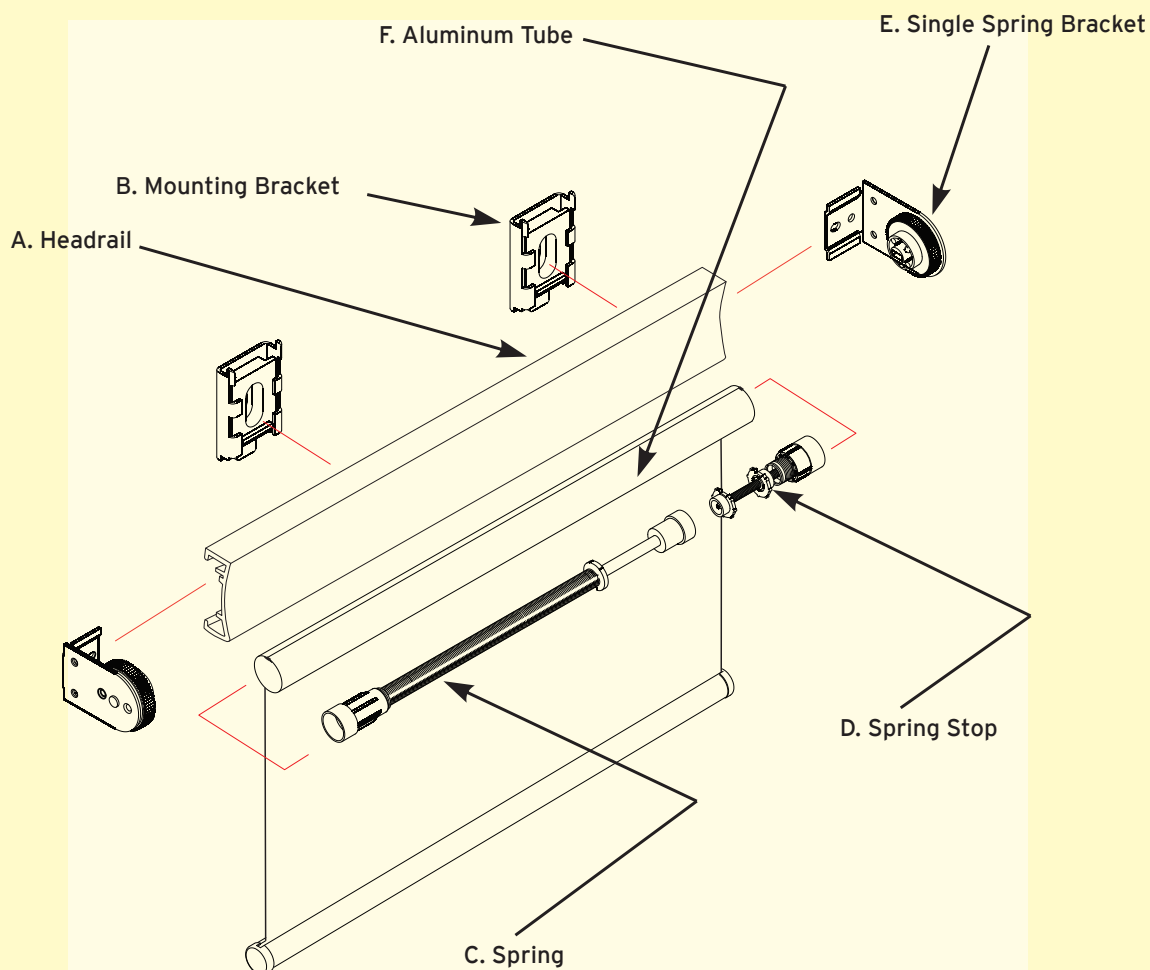


Diagram	Item	RollEase Item Number	Quantity Needed (based on one shade)
A.	Easy Spring Plus Headrail Single System	RE0080110	1
B.	Mounting Brackets for Headrail	RE0080200	varies depending on width of shade
For 1-1/4" (32mm) System			
C.	1-1/4" (32mm) Spring (left side)	RE0081600 - 1.1 x 120mm RE0084500 - 1.2 x 300mm RE0082300 - 1.4 x 400mm	1
D.	1-1/4" (32mm) Stop (right side)	RE0081200 - short RE0081300 - long	1
E.	1-1/4" (32mm) Adjustable Brackets	RE0083910	2
F.	Tube	RTEA3T12 - 12' RTEA3T16 - 16'	1
Not Shown	Pre-Rotation Tool	RE0082700	1
For 1-1/2" (38mm) System			
C.	1-1/2" (38mm) Spring (left side)	RE0080400 - 1.2 x 300mm RE0080500 - 1.5 x 450mm RE0084400 - 1.7 x 550mm	1
D.	1-1/2" (38mm) Stop (right side)	RE0081400	1
E.	1-1/2" (38mm) Adjustable Brackets	RE0080710	2
F.	Tube	RTEA4T12 - 12' RTEA4T16 - 16'	1
Not Shown	Pre-Rotation Tool	RE0084200	1

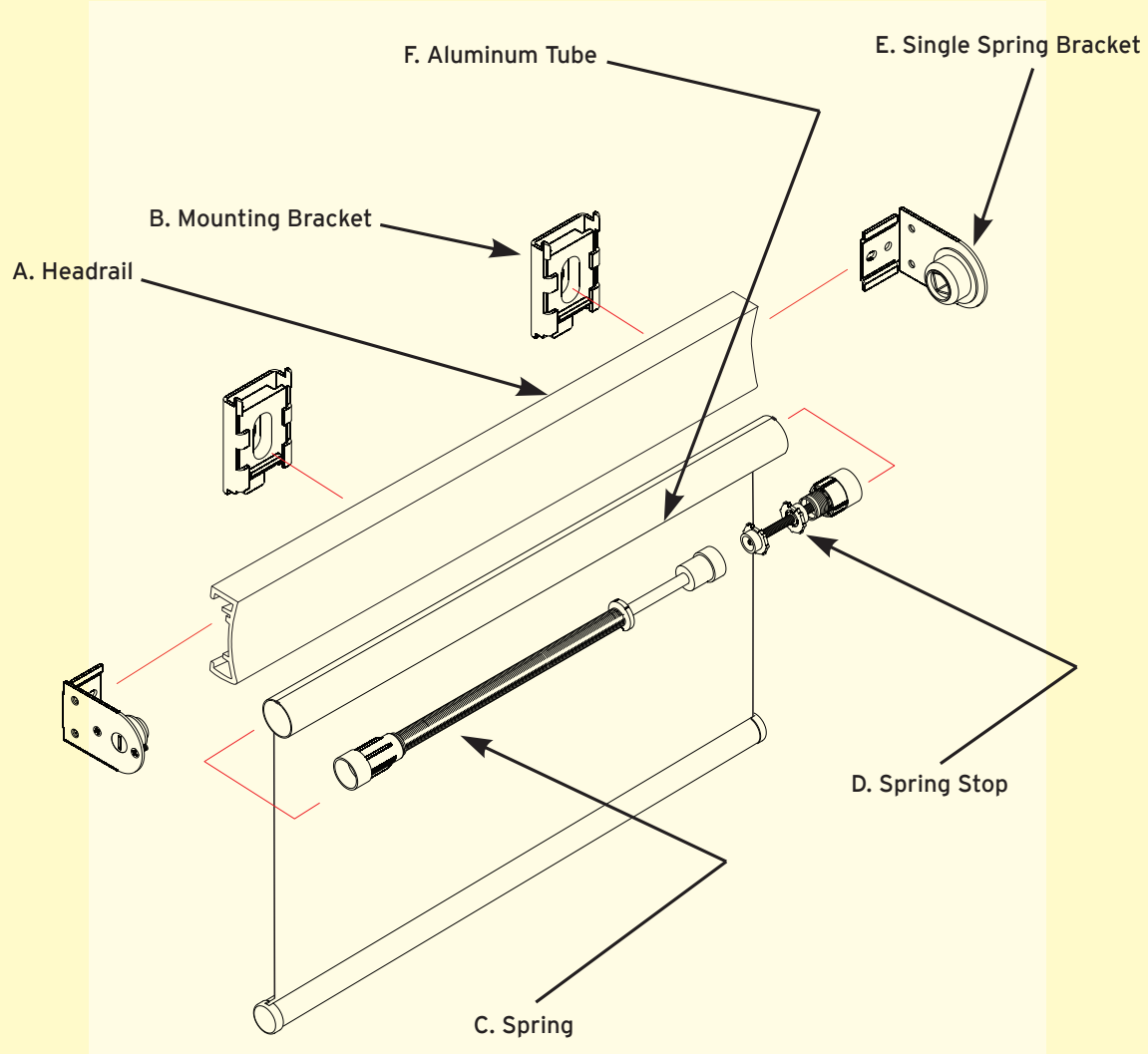


Diagram	Item	RollEase Item Number	Quantity Needed (based on one shade)
A.	Easy Spring Plus Headrail Single System	RE0080110	1
B.	Mounting Brackets for Headrail	RE0080200	varies depending on width of shade
C.	38mm Spring (left side)	RE0080400 - 1.2 x 300mm RE0080500 - 1.5 x 450mm RE0084400 - 1.7 x 550mm	1
D.	38mm Stop (right side)	RE0081400	1
E.	38mm Bracket without Adjuster	RE0084610	2
F.	Tube	RTEA4T12 - 12' RTEA4T16 - 16'	1
Not Shown	Pre-Rotation Tool	RE0084200	1

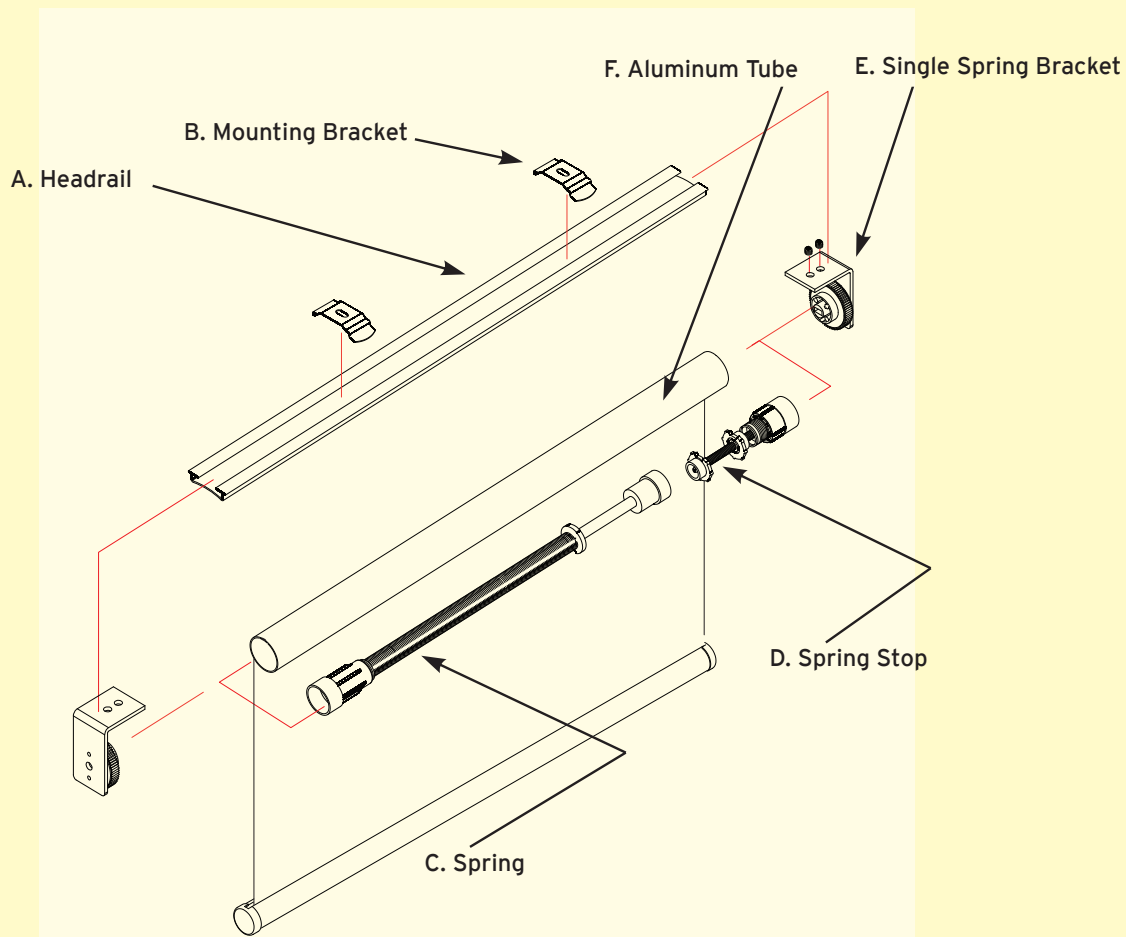


Diagram	Item	RollEase Item Number	Quantity needed (based on one shade)
A.	Easy Spring Plus Headrail Single & Double	RE0080810	1
B.	Easy Spring Plus Mounting Bracket	RE0081110 - White RE0081030 - Silver	varies depending on width of shade
C.	1-1/4" (32mm) Spring (left side)	RE0081600 - 1.1 x 120mm RE0084500 - 1.2 x 300mm RE0082300 - 1.4 x 400mm	1
D.	1-1/4" (32mm) Stop (right side)	RE0081200 - short RE0081300 - long	1
E.	1-1/4" (32mm) Single Adjustable Bracket	RE0084110 - 50mm RE0084010 - 57mm	2
F.	Tube	RTEA3T12 - 12' RTEA3T16 - 16'	1
Not Shown	Pre-Rotation Tool	RE0082700	1

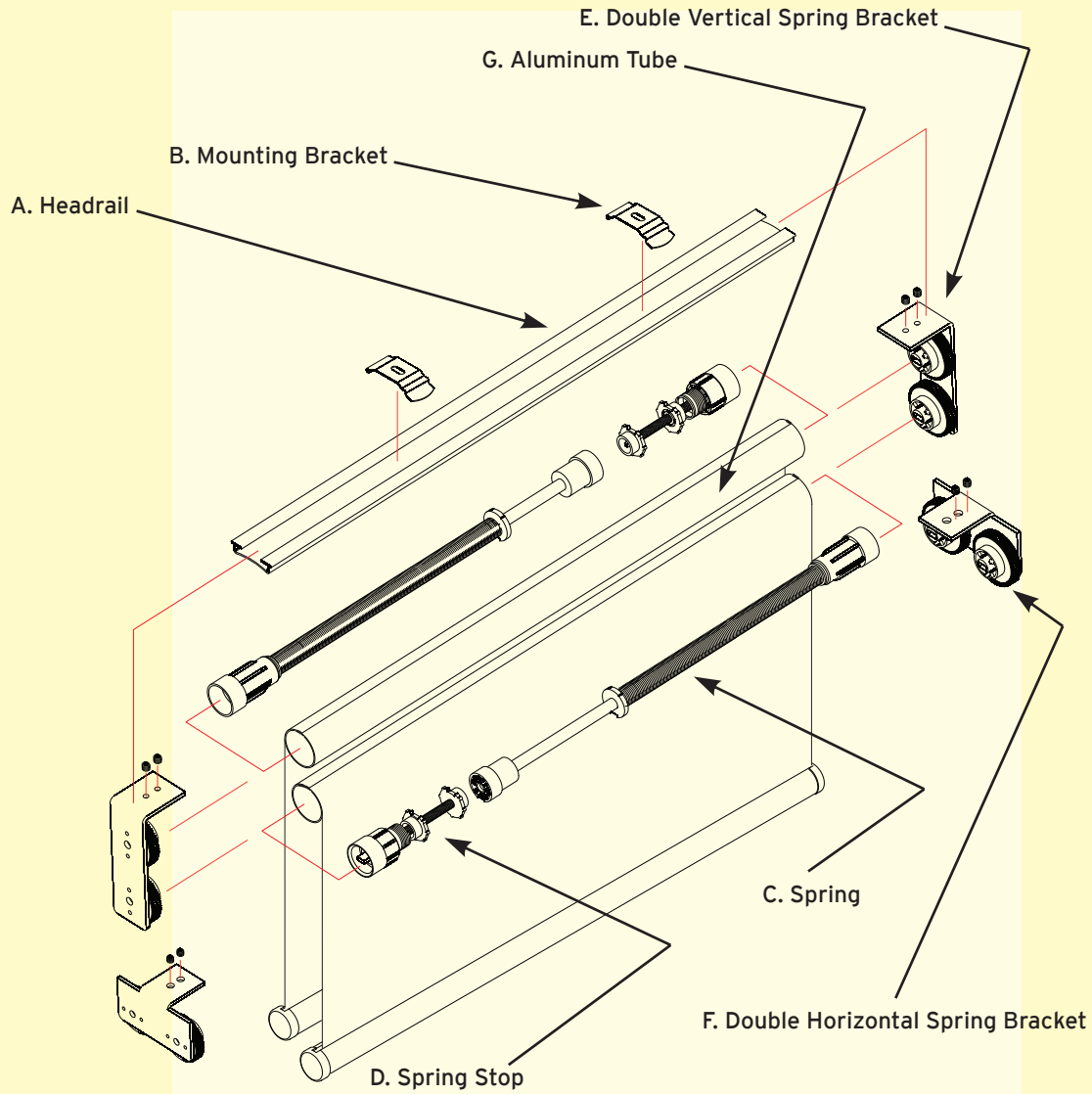
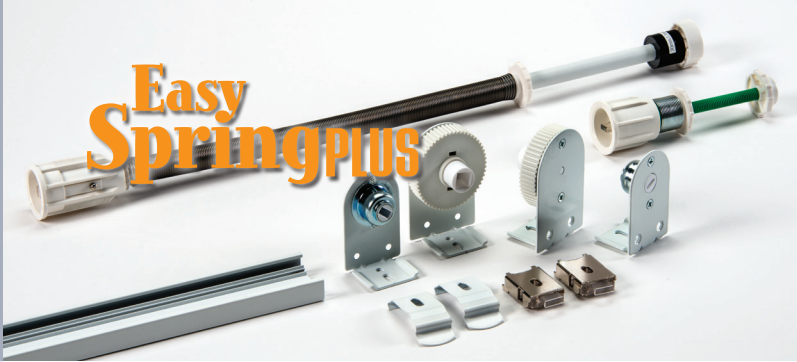
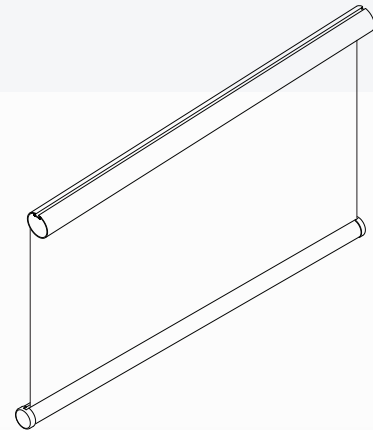


Diagram	Item	RollEase Item Number	Quantity needed (based on one shade)
A.	Easy Spring Plus Headrail Single & Double	RE0080810	1
B.	Easy Spring Plus Mounting Brackets	RE0081110 - White RE0081030 - Silver	varies depending on width of shade
C.	1-1/4" (32mm) Spring (left side)	RE0081600 - 1.1 x 120mm RE0084500 - 1.2 x 300mm RE0082300 - 1.4 x 400mm	2
D.	1-1/4" (32mm) Stop (right side)	RE0081200 - short RE0081300 - long	2
E.	1-1/4" (32mm) Double Adjustable Straight Bracket	RE0082610	2
F.	1-1/4" (32mm) Double Adjustable Horizontal Bracket	RE0084310	2
G.	Tube	RTEA3T12 - 12' RTEA3T16 - 16'	2
Not Shown	Pre-Rotation Tool	RE0082700	1



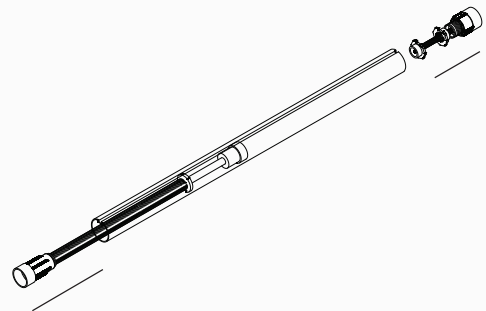
STEP 1

Prepare fabric, tube, and hem bar using the deduction chart. Attach fabric to tube, and hem bar to fabric, as for a standard roller shade.



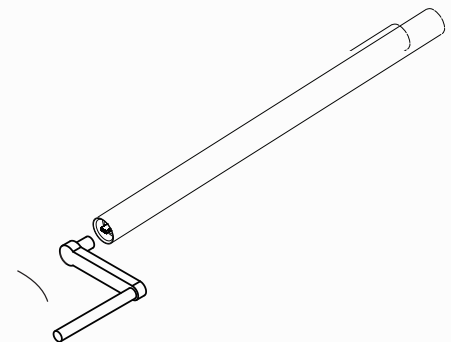
STEP 2

Insert desired spring into left side of tube (see spring selector guide) and desired stop into right side of tube.



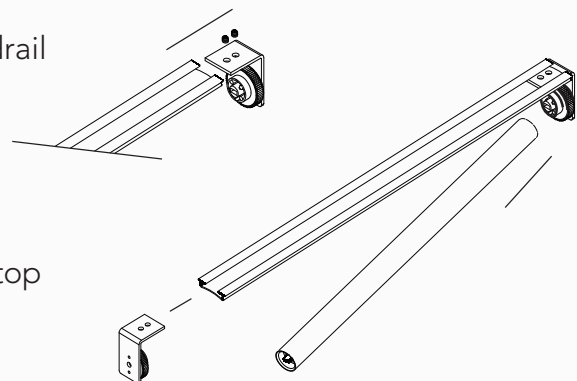
STEP 3

Using the pre-rotation tool, turn the spring set (see spring selector guide for the number of turns) to set the tension on the spring. (Note: keep the blind in a horizontal position for this step).



STEP 4

Attach one end bracket to the end of the headrail using the set screws provided. Position the male end of the spring, or stop, to the bracket attached to the rail. Position the other bracket to the rail and tube, and attach with set screws. Make sure that the brackets fit all the way into the rail and spring/stop ends. Do not over tighten set screws.



For installation, mount brackets to mounting surface and snap headrail into brackets.



Since 1980, RollEase has been the essential resource for the production of high-quality window covering lift systems and products. RollEase's award-winning lift systems are considered the finest manually operated lift systems on the market. RollEase clutches can be found in window treatments in hotels, office buildings, historic landmarks, and fine residences across the United States and internationally.

RollEase Headquarters

200 Harvard Avenue
Stamford, CT 06902-6320 USA
Office: 203.964.1573 / 800.552.5100
Fax: 203.964.0513 Order Fax: 203.358.5865

RollEase West

7310 West Roosevelt Street, Suite 26
Phoenix, AZ 85043 USA
Office: 623.936.5818
Fax: 623.936.5294

www.rollease.com

Item #MKBROESP

