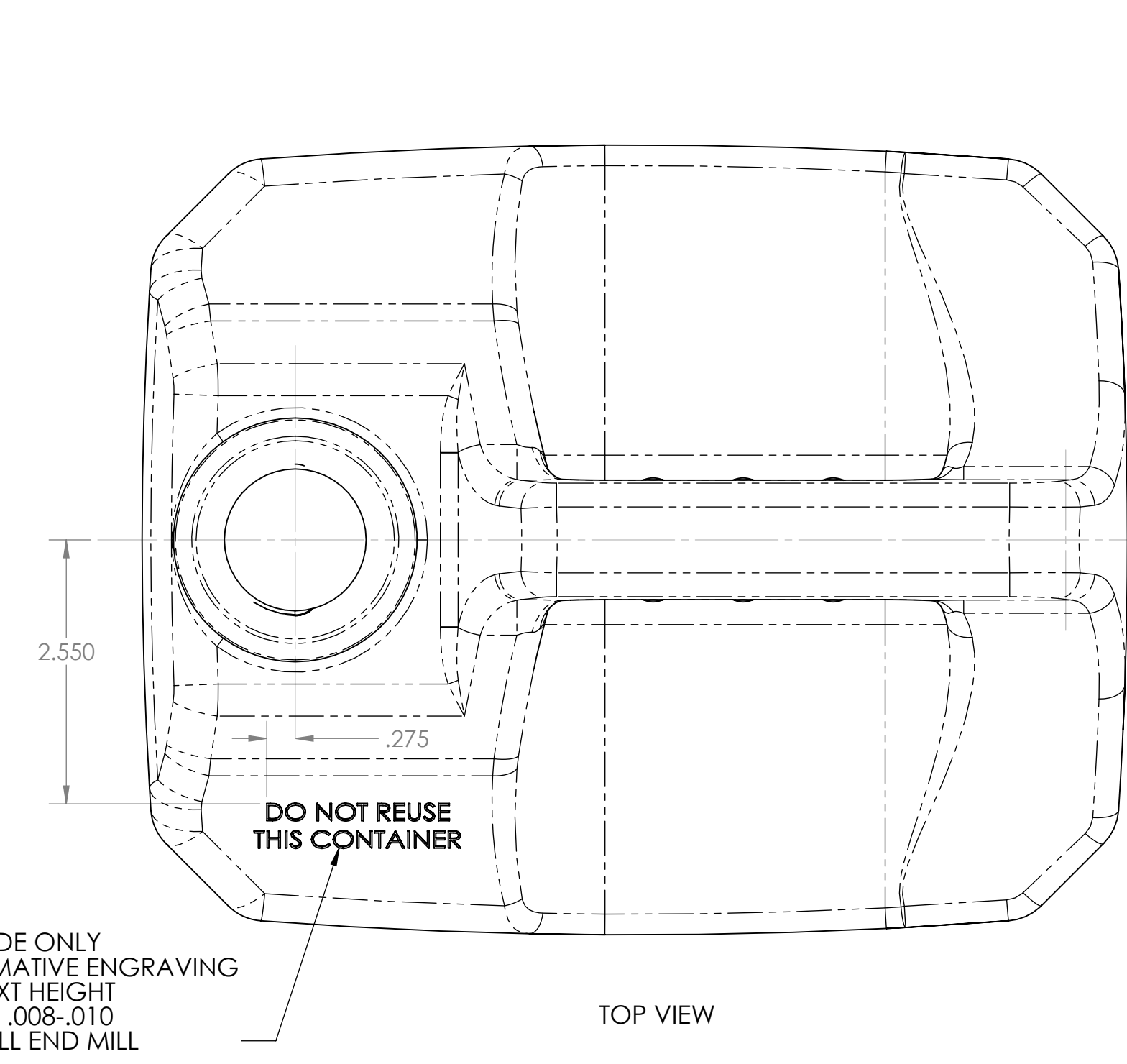
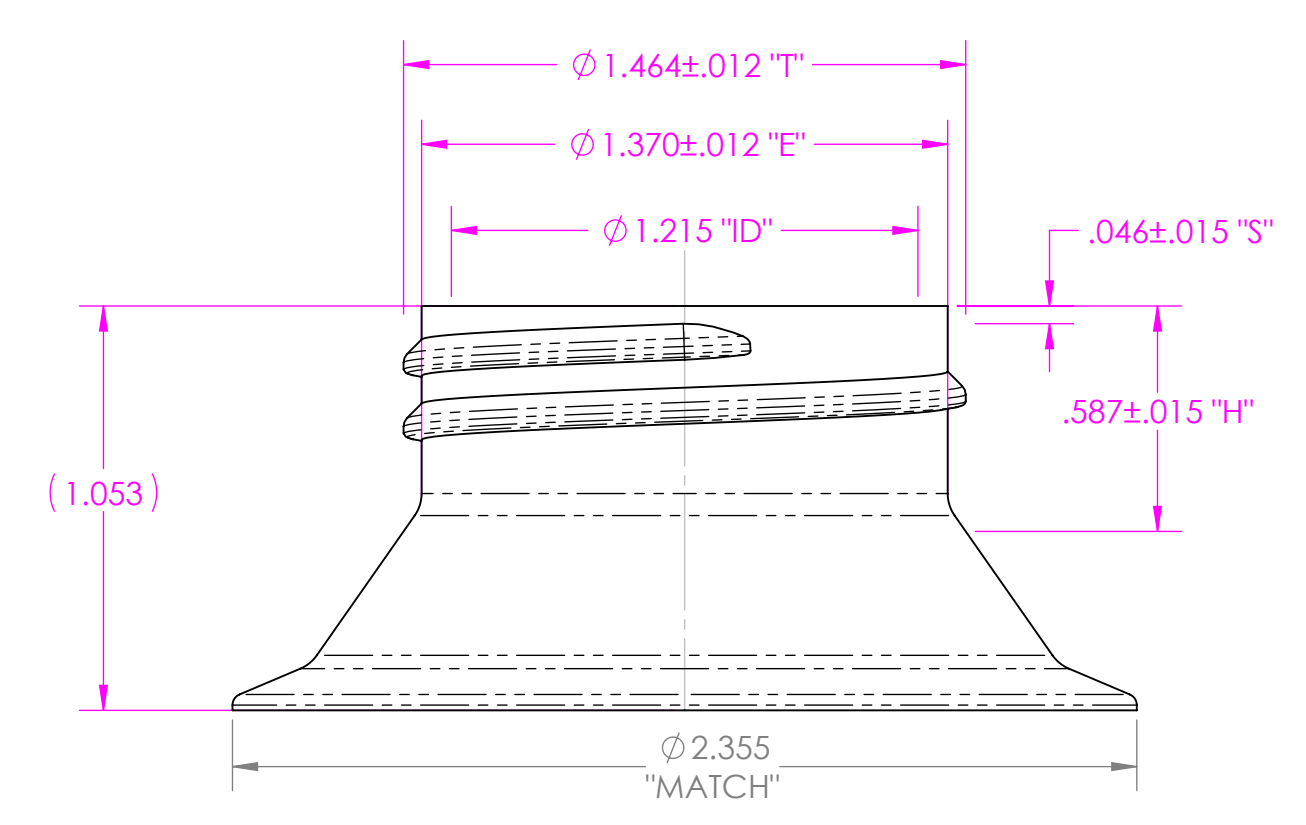
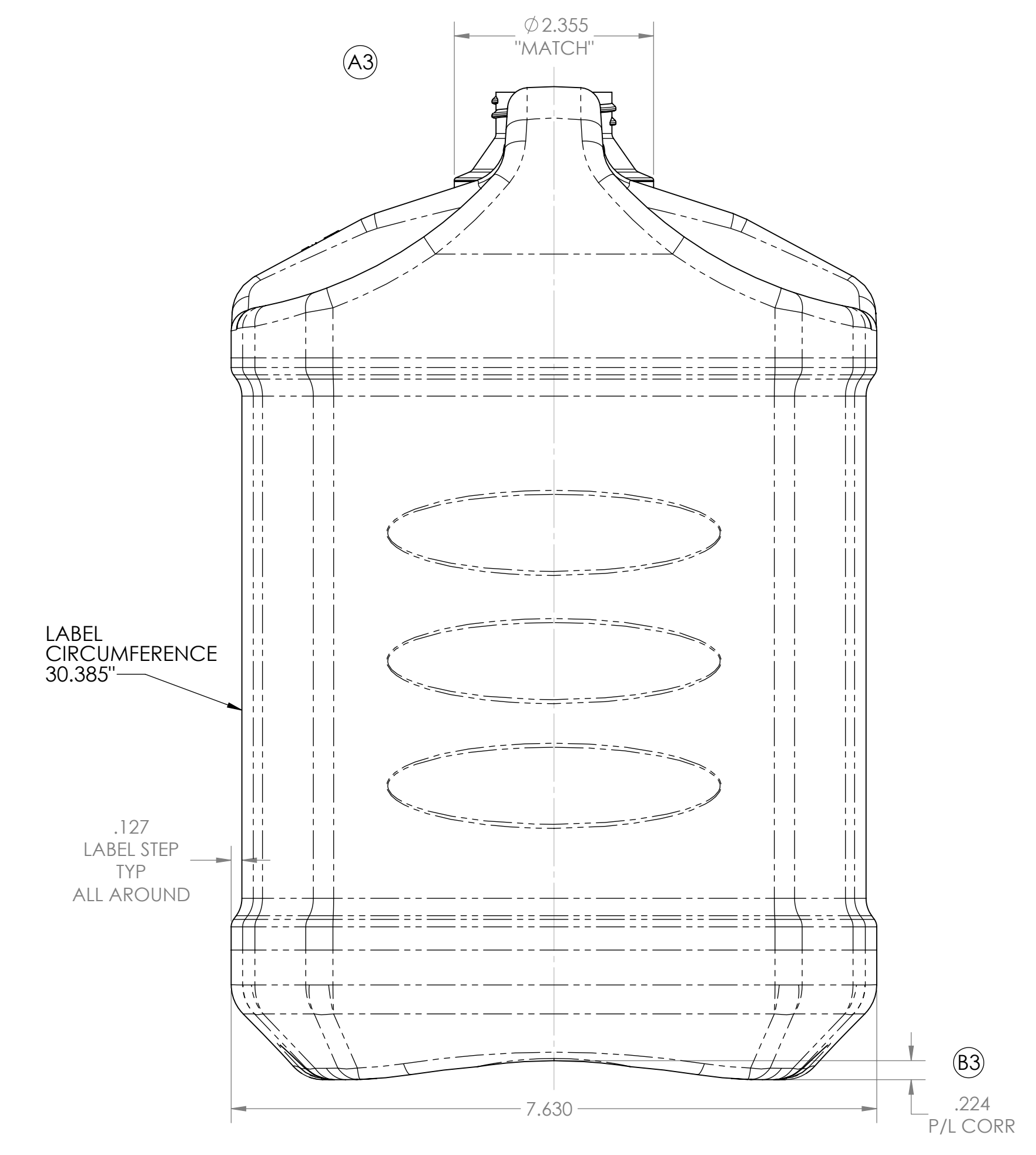
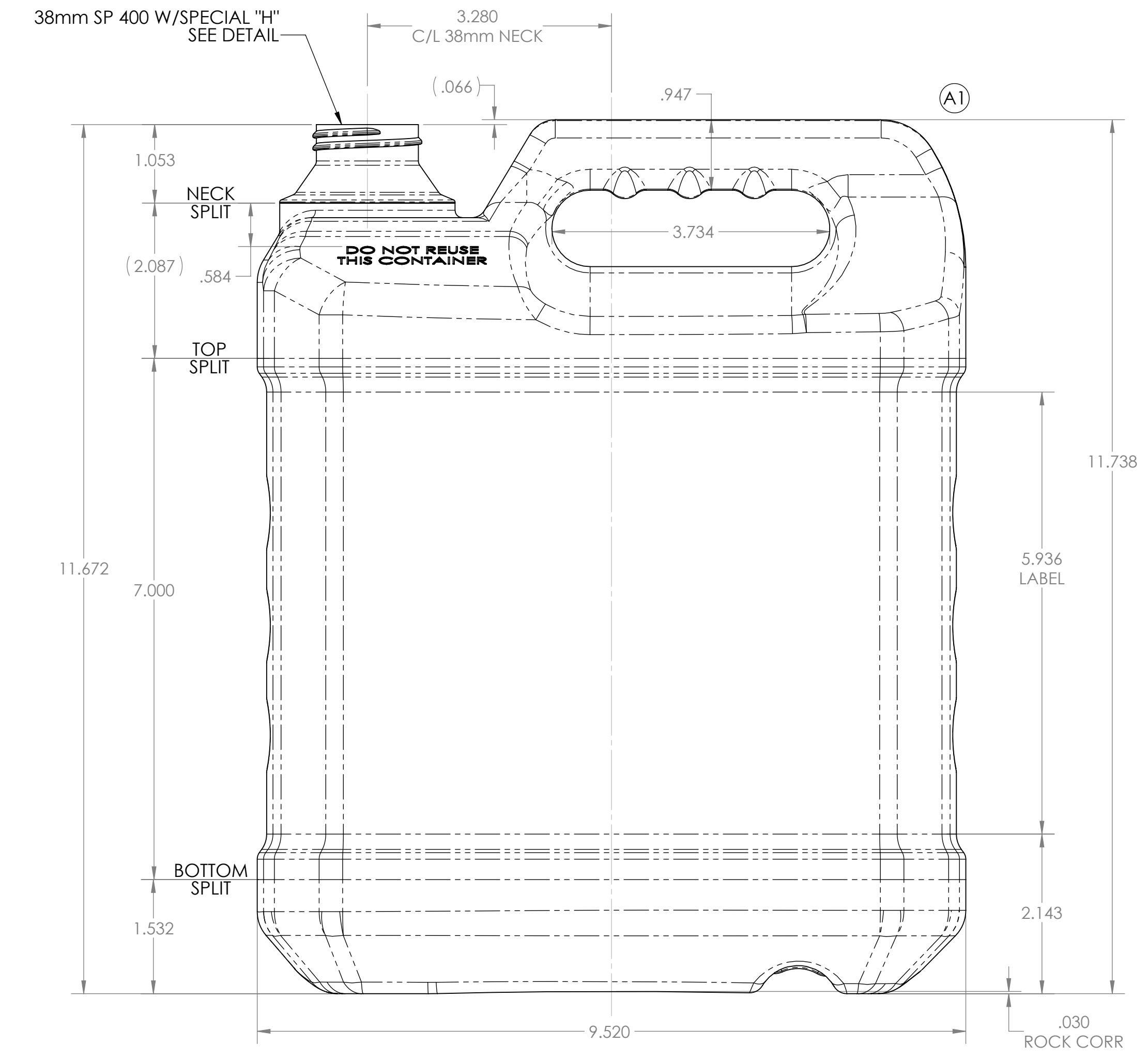


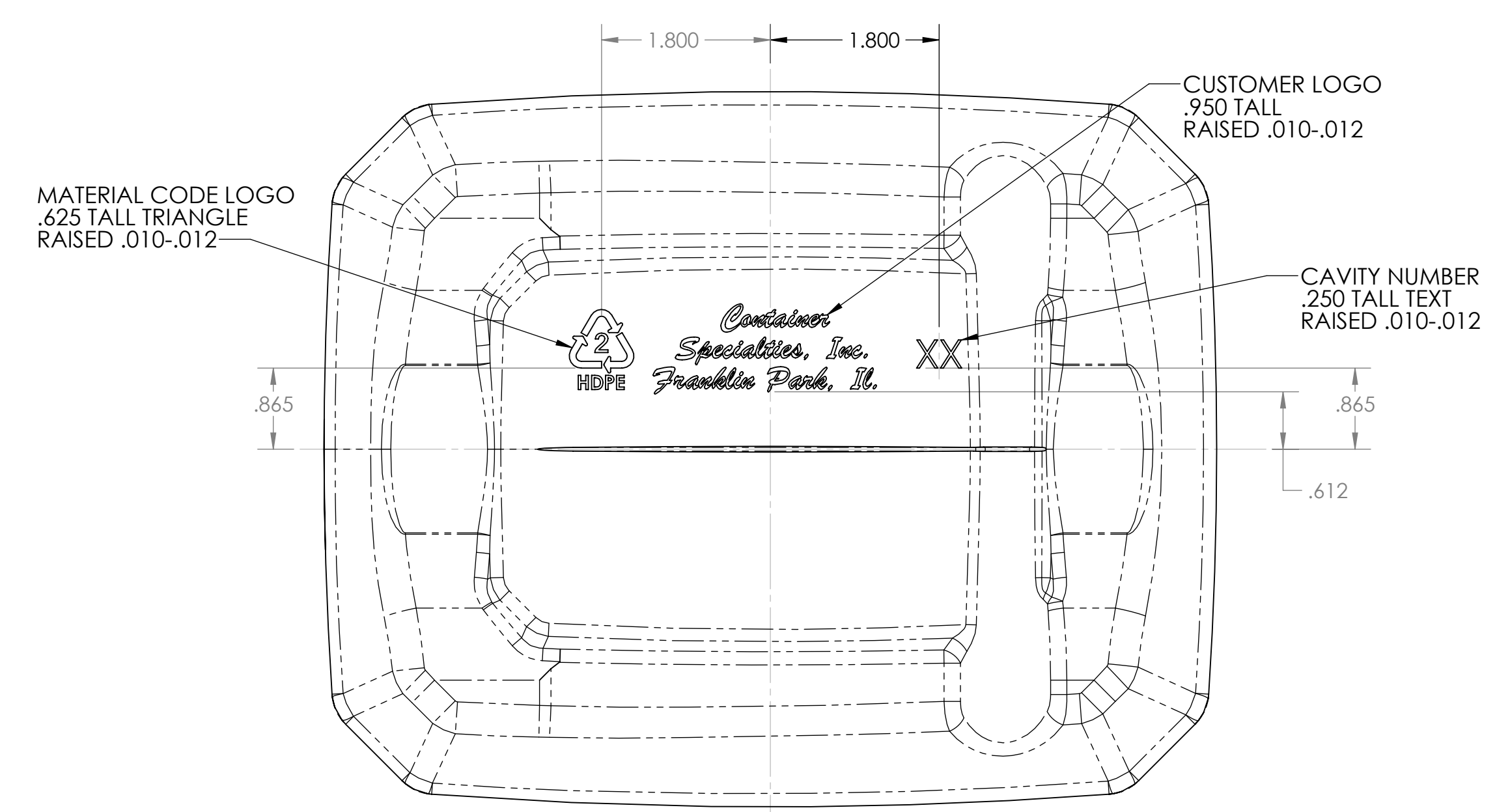
REVISIONS			
REV.	DESCRIPTION	DATE	APPROVED
A	1) REMOVED 18mm and 43mm NECK FINISH 2) REMOVED SHOULDER INSERT 3) WAS Ø 2.650 "MATCH"	6/10/2014	KDG
B	1) PUSH UP DEPTH INCREASED .150" 2) OVERFLOW VOLUME WAS 360.3 oz 3) P/L CORR WAS .074	9/3/2015	KDGC2



(A2) ONE SIDE ONLY INFORMATIVE ENGRAVING .185 TEXT HEIGHT RAISED .008-.010 USE BALL END MILL



38mm SP 400 NECK FINISH W/SPECIAL "H"
 THREAD NOTES:
 1. 6 THREADS PER INCH
 2. 1.5 TURNS OF THREAD
 3. "M" STYLE THREAD PROFILE
 4. THREAD START 90° TO P/L IN PIN HALF



Notes:
 1) Tolerances Unless Specified:
 Vertical -- ±.080
 Horizontal -- ±.090
 Volumetric -- ±3.6 oz
 2) Bottles to be Checked Aged with 20° C water
 3) Estimated Bulge -- 14 oz



PROPRIETARY AND CONFIDENTIAL THE INFORMATION CONTAINED IN THIS DRAWING IS THE SOLE PROPERTY OF MID-AMERICA MACHINING, INC. ANY REPRODUCTION IN PART OR AS A WHOLE WITHOUT THE WRITTEN PERMISSION OF MID-AMERICA MACHINING, INC. IS PROHIBITED.	Drawn By: KDG Checked: MJS Customer: CSI Job #: 20734 Reference Materials: Customer supplied sample	Date: 19MAY14 Date: 19MAY14	Container Data: Weight: 305 grams Fill Level Capacity: 320 oz Dry Product Overflow Capacity: 357 oz (B2) Material: HDPE Avg. Wall Thickness	Description: Product Drawing 2.5 Gallon F Style Size: D Drawing Number: MA9079-2 Scale: 1:1	REV B SHEET 1 OF 1
---	---	--------------------------------	--	--	-----------------------