

4000 sq.ft. For Lease

26409 Northline Rd, Taylor, MI 48180



Listing ID: 30473346
Status: Active
Property Type: Industrial For Lease
Industrial Type: Flex Space, Manufacturing
Contiguous Space: 4,000 SF
Total Available: 4,000 SF
Lease Rate: \$6.25 PSF (Annual)
Base Monthly Rent: \$2,083
Lease Type: Modified Gross
Ceiling: 16 - 18 ft.
Office SF: 960 SF
Drive-In Bays: 1 Bay



Overview/Comments

4,000 sq.ft. of light industrial for lease in Taylor Trade Center 1. 26409 Northline Rd. Mezzanine storage over office.

Call Rea Construction at 734 946-8730 for a tour.

<http://www.rea-construction.net/>

More Information Online

<http://www.catylist.com/listing/30473346>



QR Code

Scan this image with your mobile device:

General Information

Tax ID/APN: 263960770
Industrial Type: Flex Space, Manufacturing, Light Industrial, Warehouse/Distribution
Land Area: 3.53 Acres

Available Space

Suite/Unit Number:	26409	Lease Type:	Modified Gross
Space Available:	4,000 SF	Rent Escalators:	Step-Up Lease
Minimum Divisible:	4,000 SF	Offices:	3
Maximum Contiguous:	4,000 SF	Office SF:	960 SF
Space Subcategory 1:	Industrial-Business Park	Parking Spaces:	8
Space Subcategory 2:	Warehouse/Distribution	Loading Docks:	0
Space Type:	Relet	Drive In Bays:	1
Date Available:	09/01/2019	Ceiling Height:	18
Lease Rate:	\$6.25 PSF (Annual)	Clear Height:	16

Space Description 4,000 sq.ft. of light industrial for lease in Taylor Trade Center 1. 26409 Northline Rd. Mezzanine storage over office. Call Rea Construction at 734 946-8730 for a tour. <http://www.rea-construction.net/>

Area & Location

Property Located Between: Beech Daly and Lang
Highway Access: I94
Airports: DTW

Building Related

Tenancy:	Multiple Tenants	Office Space SF:	960 SF
Total Number of Buildings:	2	Property Condition:	Average
Number of Stories:	1	Year Built:	1978

Year Renovated: 2008
Roof Type: Flat
Construction/Siding: Brick
Parking Ratio: 1 (per 1000 SF)
Parking Type: Surface
Total Parking Spaces: 8
Column Spacing: 40
Passenger Elevators: 0

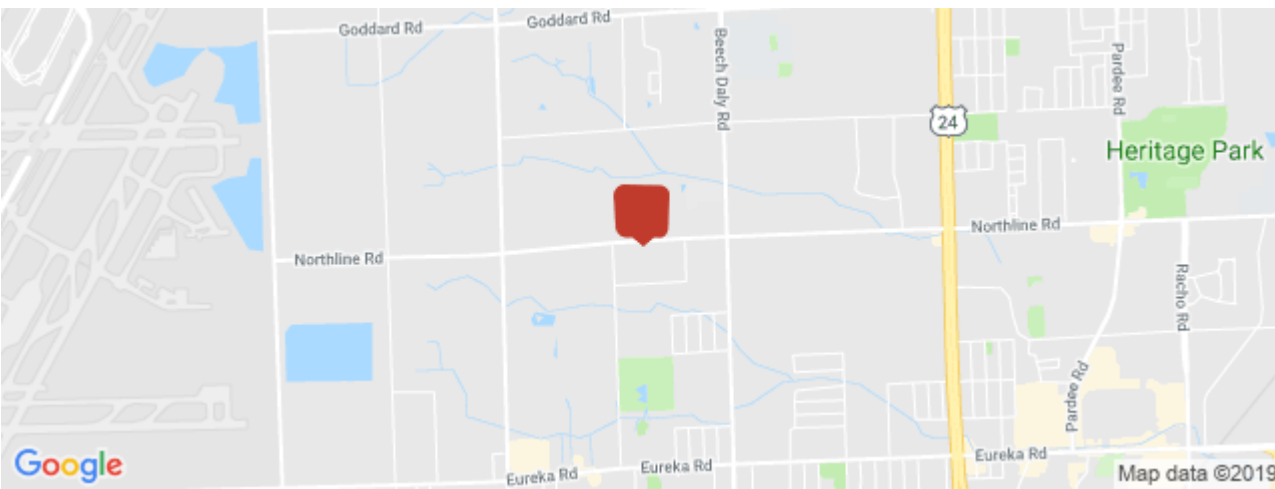
Freight Elevators: 0
Amps: 200
Volts: 208
X-Phase: 3
Heat Type: Natural Gas
Lighting: Metal Halide
Internet Access: Cable

Land Related

Water Service: Municipal
Sewer Type: Municipal

Location

Address: 26409 Northline Rd, Taylor, MI 48180
County: Wayne
MSA: Detroit-Warren-Dearborn
Submarket: Airport District



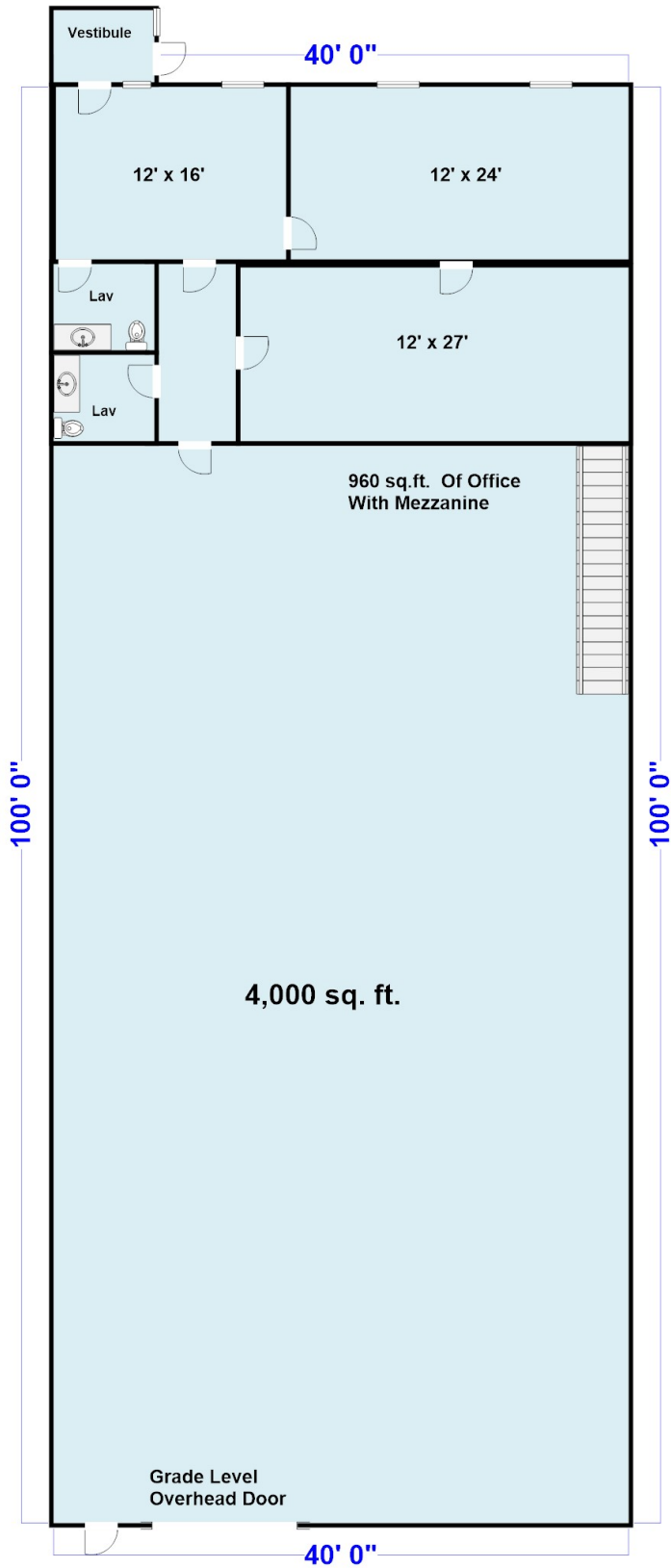
Property Images



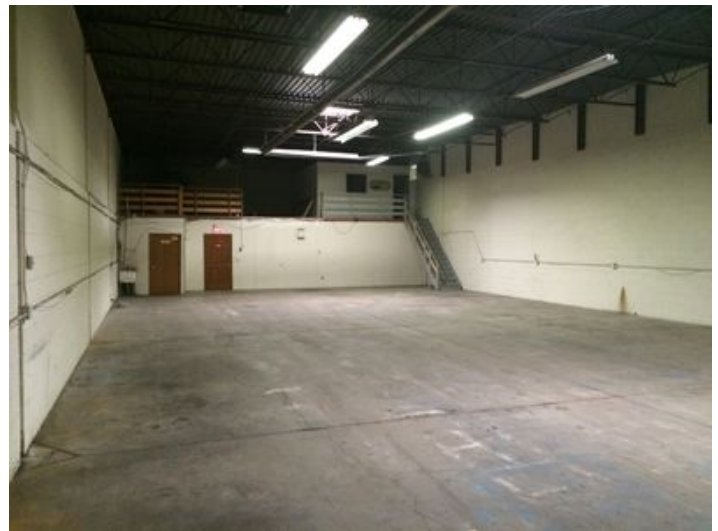
Taylor Trade Center 1&2 (4)



taylor trade center 2



26425 northline (2)



26425 northline

26409 Northline

Property Contacts



Yvon Rea

Rea Construction

734-946-8730 [0]