

# FWDP Newsletter

Volume 31 Issue 5 May 2016



## Fort Worth Decorative Painters is a Chapter of the Society of Decorative Painters Celebrating 31 Years

### Color Me Beth!

WOW! What a difference a month makes! I was "dancin' in the streets" thrilled to see a PACKED house at our last meeting. LaRue always brings in a big crowd because we all love her projects but I appreciate the extra effort it took to get so many of you there and painting. Thank you, Thank you, Thank you. Let's keep it going through the year!



Part of my excitement was due to all the visitors we had with us. Connie Alexander brought 3 friends from the library to join us. LaRue's sister-in-law, Theresa Christian-sen, a former member who has had to take some time away because of family responsibilities, was there also. Bettye Stevens came in to visit for the evening and former member Sherida D'Ambra came not only to visit but also to rejoin the chapter. Donna Armstrong, also a former member joined us. YEA and warm welcomes to all of you! We are always delighted to see new and returning visitors and members. Please come back soon!

The draw for our evening, LaRue Hughes, and her unique project, earn a very sincere thank you from all of us to you, LaRue. You always come up with the most wonderful, new, exciting projects for us and this one was the best! I walked around and saw some beautiful pieces. I can't wait to finish mine. We are so glad you are feeling better and hope you will be around to bring us your creative ideas over and over again. It's always fun when you are teaching.

Jan McCleery's Saturday Special is coming up quickly and since the April meeting was your last chance to sign up with Dusti in person, you'll need to contact her PRONTO if you want to get on the list. Jan is a one of a kind sort of gal and her seminars one of a kind, too. Remember, even if you don't want to paint the goose, you can still sign up for the seminar, sit towards the back of the class, bring a project that you need to work on and enjoy a full dedicated day of painting among friends. Your Chapter funds are being used to produce these Saturday Specials. It's a fabulous opportunity to spend a full day with friends, get a great lesson from talented teachers and have a nice lunch with your painting buds. Who could ask for more! (I have one 3-D wooden goose, \$7, and 2 flat goose cut outs, \$4 each, if anyone needs a surface.) And May will be the last time to sign up for Nancy's class in July. Please let her know if you want her canvases immediately and she can probably have them back before the May meeting.

Many thanks to Yvonne for agreeing to host our third color wheel table for the Christmas Party. I can only hope that we'll have so many people wanting to come that we'll need another table! Get ready to volunteer!

As mentioned at the last meeting, in order to make holding an office/committee chair more convenient for our Board members who live far away, we voted to have the Board Meetings for the rest of the year at 5pm on our meeting nights. As always, all members are welcome to join us for the meeting but we will discuss all issues during the regular chapter meeting, too. Please feel free to join us if you'd like to be in on the action.

Ladies, we're on a roll! I beg and you provide. Bless you all! We're almost half way through the year, if you can believe it, and as much fun as we've had so far, I'm absolutely SURE that the best is yet to come! Can't wait to see you all again in a couple of weeks. Beth



Meeting is April 18, 2016

5:00 Board Meeting 6:00 Social 6:30 Meeting

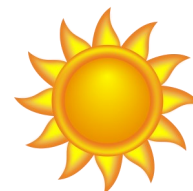
FWDP supports the Society of Decorative Painters. Dues are \$50/year. You must be a member of SDP to belong to FWP.

Visit the website at: [www.decorativepainters.org](http://www.decorativepainters.org)

## Sunshine—Larue Hughes

Ladies, please continue to check on our members who have not been here in a while. If someone is ill or needs a card, please let me know.

“Friendship doubles our Joy and divides our sorrow”(Author unknown)  
Thank you. LaRue Hughes- 817-834-5048



A Very Happy Birthday to those who have Birthdays in May and June.

5/10 Sherida D'Ambra  
5/13 Armida Guzman  
5/15 Louise Smith

6/24 Suzane Godley  
6/29 Vera Hudnall

## Treasurer's Report—Sharlene King

### Treasury Report

Checking, Bank of America	4,629.91
Savings, Bank of America	5,209.25
Total	9,839.16

## Membership—Mary Helen Horne

FWDP has 27 members  
Sherida D'Ambra has rejoined the chapter.

Please continue to invite art friends that you come in contact with as your move around your community.

Mary Helen

## Monthly Raffles—Sharlene King

May raffle items will be donated by Dusti, Beth, Armida & Delfa.

Many thanks to Yvonne, Pam, Vera & LaRue for April raffle items. We had a great selection to buy tickets for!

Sharlene



## Memory Boxes

I have not been able to attend the meetings due to family illnesses. Keep painting boxes so we have them when the need arises.

Thanks a lot,  
Judy Wallis



## Items for Newsletter

If you bring a homemade food item to the meeting, please share it.....bring me a copy or send by email so I can put it in the newsletter.



## April Meeting









## May Project—Dusti Dancer—Floral Wreath by Heidi England



## May Project—Dusti Dancer—Floral Wreath by Heidi England

This was a fun piece to paint with Heidi England, I hope you will enjoy painting it also. It was painted as a wreath originally, but for samples I have used just pieces of the pattern and changed the shape to fit the wood. If you are not interested in the wreath or just don't want to do the full piece use your imagination and adapt the pattern to any background you choose. My original is on a 15in. cheese box lid. Heidi's original was on the top of a dough box. It would look good on a flower pot, a lazy Susan, a heart shaped piece, a canvas, or anything you can think of. The pattern that is in the newsletter is the size I used on my lid.

Before the meeting you will need to basecoat your piece with a light creamy color. Mine is Buttermilk with Light Buttermilk in the center. You just want the center of the wreath a little lighter than the rest of the piece. You can't go wrong, if your piece does not fade to a lighter center it will not matter when you are finished. If desired you can add texture paste before you basecoat or Crackle between coats, this will just add a little texture detail to your piece. Heidi did both on hers and I didn't do either on my original. If your piece does not fade to a lighter center it will not matter when you are finished. Apply your pattern. The pattern that is in the newsletter is the size I used on my lid. I have also enlarged and reduced it for different pieces. That is it for before class.

Bring your regular painting supplies, a natural sponge, stylus, painters tape (optional,) and don't forget your brushes. I used a filbert #4, 6, or 8 depending on your pattern size, a small round and a liner. The edge is done on the chiseled edge of a ¾ or 1" flat.

Heidi uses Jo Sonja paints and I did not have them when I did my base coating so I just tried to get as close as possible to the pictures. If you prefer to use Americana paints I have a list of colors that are as close as I could come without mixing. I converted to colors I had on hand, you may want to mix or have a color that is closer. Use the colors that you like. I am looking forward to seeing you all at the meeting.

### Jo Sonja Background Colors

Soft White  
Poppy  
Rosewood  
Golden Grain  
Antique Brass  
Cobblestone  
Forest  
Sea Grass  
Tingles Pond  
Deep Pond  
Raindrop  
Wild Grape  
Espresso

### Americana

Warm White  
Cad Red  
Black Plum  
Moon Yellow  
Cocoa or True Ochre  
Sable Brown  
Evergreen  
Lt Avocado or Celery  
Colonial Green  
Uniform  
Ice Blue  
Plum or Pansy Lavender  
Russet



# Hospitality—Louise Smith & Juanita Munoz



Meeting Month MAY

## Main Dish

Juanita

Delfa

## Side Dish

Sharlene

Beth

## Dessert

Beth

Pam Martinez

La Rue

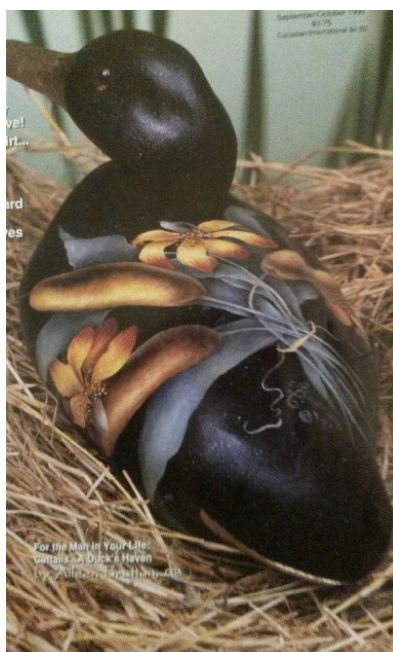
## Drinks

Connie Alexander

Thank you to everyone who signed up. We all like to eat so more is always welcome!

If you will not be attending or need to make a change please contact Juanita at 817-707-4660 .

## May Saturday Special





## Saturday Specials

Time is running out to sign up for the **May 14<sup>th</sup>** Saturday Special with **Jan McCleery**. We will be painting in water based oils and will be painting daisies and cat tails. Jan's piece is on a duck but this pattern can be painted on any surface you choose. You just need a dark background. Pattern is in the newsletter and Jan will furnish a pallet of paint if you want one. Now is your chance to try oils or dip back into them if it had been awhile. Jan sent the full pattern and a modified pattern. If you have never painted in oils she suggests that you use the modified pattern.

If you haven't signed up please call or email me to get on the list and you can mail me a check.

Our next Saturday Special will be Nancy's flowers on canvas. Contact Nancy if you want the triangle canvases, she is going to order and will have them at the May meeting. These flowers will also be in oils and she will teach is to clean our brushes with baby oil so that we don't use turpentine or another strong odor type cleaner.

Contact me to sign up for either of these seminars, a bargain at \$20 for the day, including lunch. Invite a friend, remember the Saturday Special are open to anyone. May is the last meeting to sign up for Nancy's and Jan's will be the Saturday before the meeting.

Dusti  
[thedust@charter.net](mailto:thedust@charter.net)  
817-480-7308

---

## July Saturday Special—Surface

**CHANGE OF DATE**  
**THE AUGUST SATURDAY SPECIAL HAS**  
**MOVED TO**  
**JULY 23**

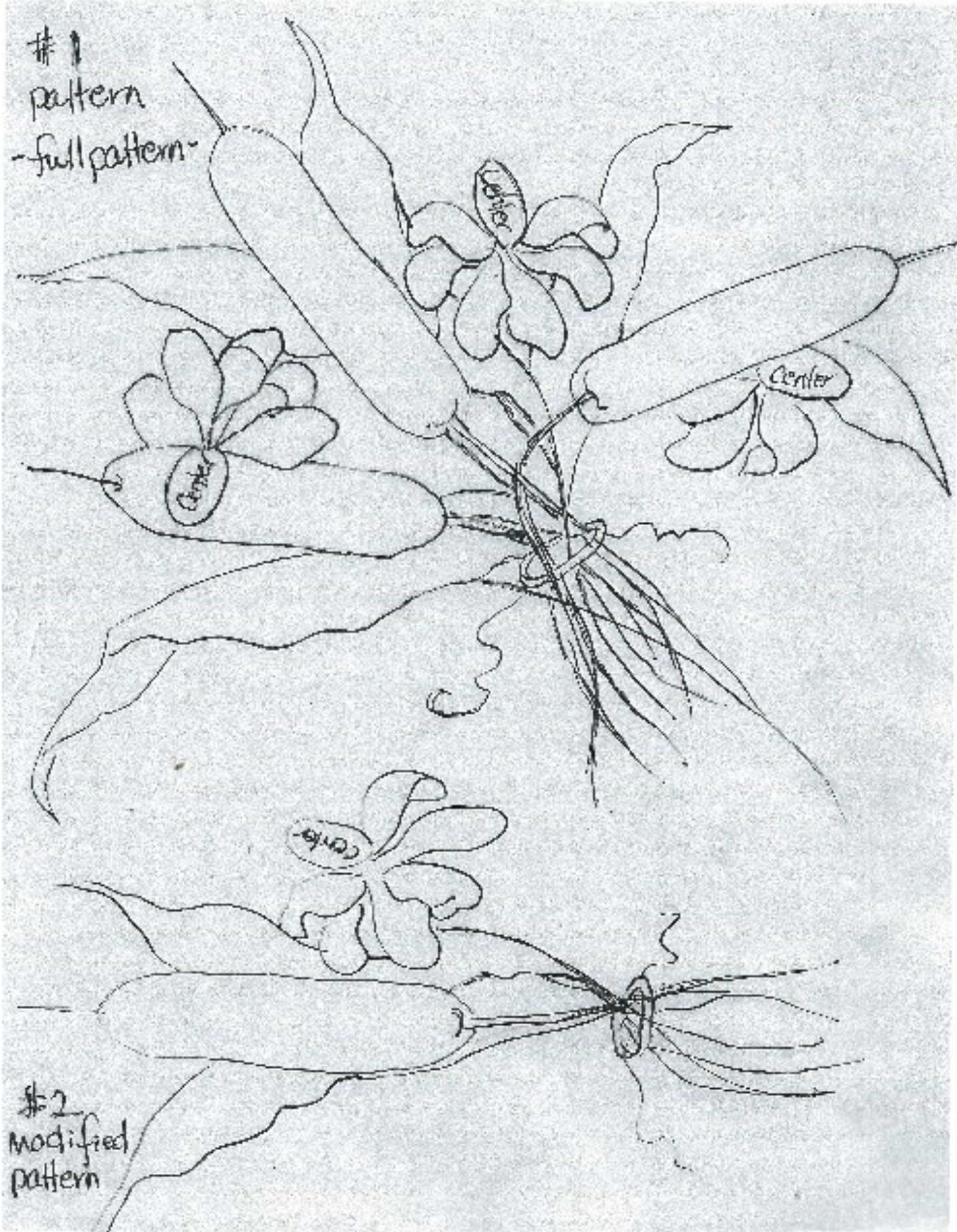
In July we will be painting two floral canvases in oils. Don't be afraid of painting in oils, it is really very easy!

You may paint on any surface you desire, but if you would like to paint on the triangle canvas they will be need to be ordered. These canvases have not been found in the area. The triangle is 12". Cost is \$8.00 per canvas with a special price of \$15.00 for two.

The canvases for those that ordered them will be at the May meeting. There will be a few extra for those that were not able to order in April.

---

#1  
pattern  
-full pattern-





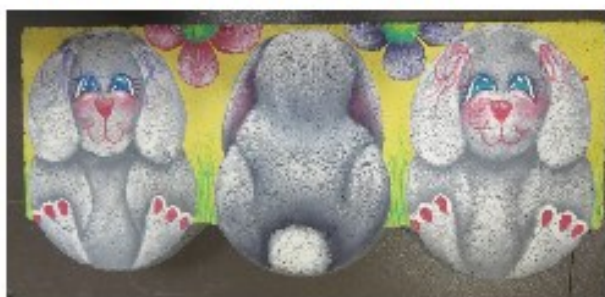
## **FWDP 2016 MEETING PROJECTS**



January—Snowman—Nancy Genetti



February—Chicken Housework Apron—Beth



March—Flopsy, Mopsy... - landscape Stone  
Beth Stodieck



April—Goldwork Floral Box—LaRue Hughes



May—Texas Wildflower Wreath—Dusti Dancer

September—Make it Take it—Armida Guzman



October—Scarecrow jar lid—Nancy Genetti



November—Joy Canvas Pillow—Sharlene





May 14

Goose with Cattails—Oils

Jan McCleery



July 23—Date Change

Pair of Florals - oils

Nancy Genetti



Oct (TBA)

Reindeer—Acrylics

Judy Briscoe

## Minutes—April 18, 2016

The meeting was called to order at 6:05 pm by President Beth Stodieck. Following items were discussed:

Announcements: Board meetings will be at 5 pm on our regular meeting nights

Minutes: Minutes approved as written.

Programs: Tonight LaRue is teaching us a gold work floral. Dusti explained the prep for her piece to be taught in May – floral wreath designed by Heidi England.

Membership: There 26 paid members for this year. Sherida D'Ambra had rejoined the chapter.

Treasurer's report: Checking 4,554.91 Savings 5,209.25 for a total of 9,764.16.

Newsletter: Deadline is April 24.

Seminar: Sandy Aubuchon seminar was a great success and everyone that attended learned and had fun. Members were reminded that you cannot even take a class a convention for the price the chapter charges. Everyone should take advantage of these bargains.

Quarterly Saturday Special: The first Saturday Special will be May 14 with Jan McCleery in oils. Dusti is taking money tonight. You can paint in any medium, but class will be taught in oils. The August Saturday special is being changed to July. It will be either 23rd or 30th, depending on availability of the church. Dusti is also taking sign-ups for the July Saturday Special and Nancy is taking canvas orders.

Christmas Party: The Theme will be A Color Wheel Christmas. The special ornament to be painted will be a palette, but it cannot be painted as a palette with spots of paint on it. Three members have volunteered to decorate tables – Louise Smith (yellow), Yvonne Lowrie (Red) and Beth Stodieck (blue).

Hospitality: Members were thanked for the food & drinks brought tonight. List going around for next month.

### Memory Boxes

Monthly raffle: Sharlene thanked those that brought raffle items tonight.

Sunshine: Many members are having ongoing health issues. Especially keep Jeanette Johnson, Jan McCleery and Peggy Gilliland in your prayers.

### Old Business:

Meeting Adjourned at 6:25 for painting with LaRue.

Respectfully submitted,

Nancy Genetti, Recording Secretary

## 2016 Board



### Elected Officers:

President:	Beth Stodieck
Vice/Program/Pres. Elect:	Armida Guzman
Vice/Membership/Directory:	Mary Helen Horne
Secretary/Newsletter:	Nancy Genetti
Treasurer:	Sharlene King & Dusti Dancer

### Committees:

Christmas Party:	Armida Guzman & Nancy Genetti
Hospitality/Table Attendant:	Louise Smith/ Juanita Munoz
Monthly Raffle:	Sharlene King
Website/Publicity:	Suzane Godley
Parliamentarian:	
Saturday Specials	Dusti Dancer
Seminars	Nancy Genetti
Sunshine/Birthdays:	LuRue Hughes
Memory Boxes	Judy Wallis

## Notices

### Sandy Aubuchon Seminar

If you purchased Sandy's Color book and have not picked it up or let me know to bring it to meeting in May please contact me and I will bring yours.

Thanks, Nancy

### Anyone have?

Peggy Gilliland is looking for a Maureen McNaughton floral tray pattern that was done at a chapter meeting. She thought it was a FW project, but it was probably Bluebonnet Chapter. If anyone has the that pattern please contact Peggy.



How often does this happen?

We had Four YES four Texas SDP Chapter Presidents at the Yellow Rose Chris Haughey seminar. L to R Nancy Genetti—Bluebonnet Chapter, Arlington, Nancy Nass—Wildflowers Chapter in Sherman, Donna Armstrong - Yellow Rose Chapter Dallas, and Beth Stodieck - Fort Worth Chapter. We need to see more of this!



## Christmas Party—Armida & Nancy



The Theme for this year's Christmas Party is “A Color Wheel Christmas”

1. We have three volunteers to decorate tables:

Yvonne Lowrie—Red

Louise Smith—Yellow

Beth Stodeick—Blue

2. Silent Auction

The silent auction is our main income for the year. We would like to have some wonderful pieces this year that members can't resist bidding on.

We ask that the pieces be no older than 2 years.

If older than 2 years, a special piece, i.e. from a noted artist, a Decorative painting historical piece, etc. will be considered by the committee.

3. We will have gifts of five again this year. Beth will be in charge of these.
4. Please paint a special ornament to be exchanged. We have decided that the ornaments will all be painted on the same wood piece this year. The surface is a PALETTE. The only stipulation is that it cannot be painted as a palette (ie blobs of paint on it)). We are getting fewer and fewer each year. This has always been a fun part of the party. Some of us have ornaments from 30-40 years ago and are they wonderful to bring out at Christmas time. Dusti will be in charge of the ornament exchange.
5. And.....we will have a great dinner as always, along with a few surprises.

Anyone that would like to help or have any suggestions, please see Armida or Nancy.

## Subscription Information

### Address:

Painting World Magazine  
PO Box 1236  
Miamisburg, OH 45343-1236

### Make checks out to Magpie Publishing, LLC.

For US Subscriptions, send \$29.99 for the full years' subscription.

**Questions?** Email: [info@paintingworldmag.com](mailto:info@paintingworldmag.com) *You will get a response within 1-2 business days.*

Subscriptions in the US are \$29.99 per year, which includes 7 beautiful, full-color printed issues that arrive at your door every 2 months plus access to a digital edition.

**That's only \$4.28 per issue! Save 46.5% off the newsstand price!**

**PLEASE REMEMBER: The first issue will not publish until *after June 15, 2016.***

### Payment Methods:

You can pay with all major credit cards or PayPal.

Pay by mailing a check to the address above

### Shipping Time:

Please allow 6-8 weeks for shipment of your subscription in the US, longer for international shipments.

## Save the Dates

Lynn Andrews will be coming to Wildflowers Chapter in Sherman September 21 & 22

Rosemary West will be coming to San Angelo June 18 & 19

## SDP Corner



Early bird registration has been extended. It is not too late to register and come to Conference and paint, paint paint.

Check your email for the Ezines sent out by SDP. That have lots of information in them along with downloadable projects. Maybe someday our chapter will be featured. Also check the members only section of the SDP website for free projects.

## Birth Announcement!

### Oklahoma City Painting Palooza



(by definition – an all-out Crazy Event)

**Due Date - September 26 – October 1, 2016**

Size - Small (to begin with) but ***Mighty*** Parents -

**Bear With Us, Rol Publications & Turtle Hollow.**

Due to an apparent void in this part of our country, that has a huge painting population, we are looking to put the Best of the Best together to bring a frenzy of painting fun, education, laughter and shopping to the southwest.

Rally ALL your painting buddies & friends to come join us for the most enjoyable time you can **imagine**

The Sheraton Hotel info is on the web site if you want to make reservations for your room. Only \$89.00/night

**Registration is now open**



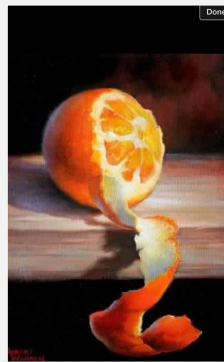
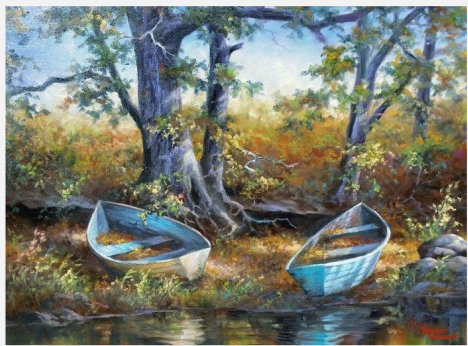
## Robert Warren Seminar

Second annual Winstar seminar with Robert Warren! The dates are Sept 26-29, 2016. The seminar will be at the Winstar casino in Thackerville OK, about one hour north of Dallas. The cost of the seminar this year is \$525.00 and a \$250.00 deposit will secure your seat in this class. My address to send your deposit is:

Jo Legg

429709 E. 1950 Rd.

RATTAN, OK 74562



A ~ anger makes me unattractive. Overcome it.

R ~ respect all human life. God made us all.

T ~ treat others the way you want to be treated. We all deserve it

I ~ imagine something wonderful about everything

S ~ say only nice things or nothing at all

## Fort Worth Decorative Painters

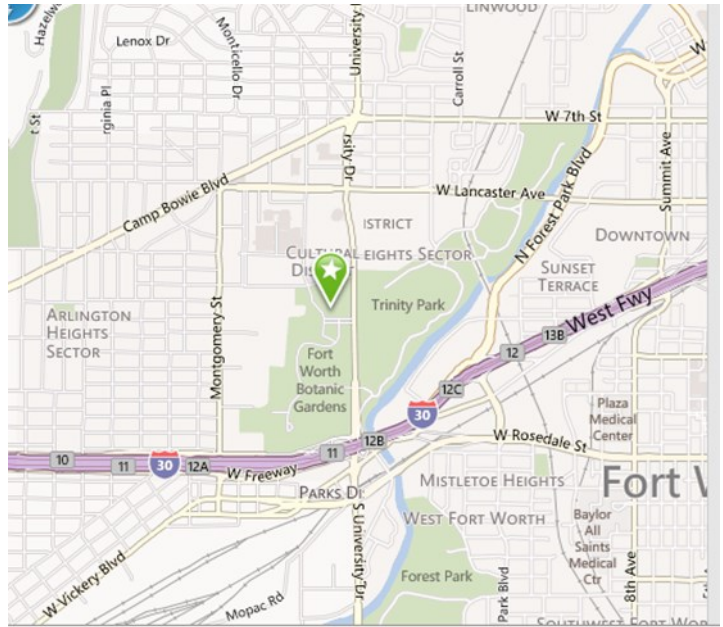
Nancy Genetti  
Newsletter Editor  
1117 Eton Drive  
Richardson, TX 75080

### Facebook:

Fort Worth Decorative Painters (FWDP)

[www.fwdecorativepainters.com](http://www.fwdecorativepainters.com)

Next Newsletter Deadline 5-20-16



**FWDP Meets the Third Monday of February, March, April, May, September, October & November.**

**January Meeting 4th Monday and the Christmas Party 2nd Monday in December.**

**At the**

**Botanical Gardens  
3220 Botanic Garden Blvd.  
Fort Worth, TX 76107**

### 2016 Dates to Remember

May 14—Saturday Special—Jan McCleery—Goose with cattails

May 16—Regular Meeting—Dusti Dancer—Texas Wildflower Wreath

May 16—5 pm Board Meeting

**July 23**—Saturday Special—Nancy Genetti—Floral Canvases—**date change**

August 23—Board Meeting (if needed)

September 19—Regular Meeting—Armida Guzman—Make It Take It

September 19—5 pm Board Meeting

October ?? - Saturday Special—Judy Briscoe—Reindeer

October 17—Regular Meeting—Nancy Genetti—Scarecrow jar lid

October 17—5 pm Board Meeting

November 21—Regular Meeting—Sharlene King—Joy Canvas Pillow

November 21—5 pm Board Meeting (if needed)

December 12—Christmas Party—A Color Wheel Christmas