

1. LIFT DEALER SHALL PROVIDE AND INSTALL ALL SPECIFIED LIFT COMPONENTS IN ACCORDANCE WITH MANUFACTURER'S INSTRUCTIONS AND AS SPECIFIED AND APPROVED BY ARCHITECT.
2. HOISTWAY BY OTHERS, HOISTWAY MUST HAVE NO PINCH POINTS.
3. LANDING GATES AND DOORS SHALL BE INSTALLED BY OTHERS. MINIMUM OF 6'8" HEADROOM CLEARANCE AT UPPER LANDING BY OTHERS.
4. ELECTRICAL CONTRACTOR TO PROVIDE A 115V, SINGLE PHASE 15 AMP ELECTRICAL CONNECTION FOR LIFT.
5. ELECTRICAL PIPING AND WIRING TO GATES, DOORS, CALL-SEND CONTROLS, STRIKES, INTERLOCKS, AND MACHINE HOUSING BY OTHERS. DISCONNECT SWITCH BY OTHERS.
6. ALL LIGHTING BY OTHERS. LIGHTING NOT LESS THAN (5) FOOT CANDLES.
7. FINAL ELECTRICAL CONNECTIONS TO LIFT COMPONENTS AND LIFT ADJUSTMENTS BY LIFT DEALER.
8. LIFT BASE MUST BE ANCHORED TO A 4" THICK, 3500 PSI, LEVEL, REINFORCED CONCRETE PAD. PAD CONSTRUCTED BY OTHERS.
9. LIFT IS SUBJECT TO LOCAL, CITY, AND STATE CODES. ALL DESIGNS, CLEARANCES, WORKMANSHIP AND MATERIAL SHALL BE IN COMPLIANCE WITH ALL CODES HAVING LEGAL JURISDICTION.
10. LIFT SHALL BE IN COMPLIANCE WITH ALL APPLICABLE INSPECTION REQUIREMENTS. DETERMINATION AND ADHERENCE TO THESE REGULATIONS IS THE RESPONSIBILITY OF THE LIFT DEALER.
11. DIMENSIONS AND SPECIFICATIONS ARE SUBJECT TO CONSTANT CHANGE AND CONTINUALLY EVOLVING CODES AND PRODUCT APPLICATIONS.
12. ANY ALTERATIONS TO THE EQUIPEMENT WITHOUT THE WRITTEN AUTHORIZATION OF MANUFACTURER WILL VOID ALL WARRANTITES.

TECHNICAL SPECIFICATIONS

CAPACITY: 750 LBX. (327kg) WITH MINIMUM SAFETY FACTOR OF 5 TIMES RATED LOAD.
 TRAVEL SPEED: 18 TO 21 FPM (.08 ms) MAXIMUM. LIFT SHALL STOP AUTOMATICALLY AT DESIRED LANDINGS.
 DRIVE: 1:2 CHAIN HYDRAULIC FULL TIME 24V BATTERY OPERATION AND SMART CHARGER.
 CONTROLS: PLATFORM CONTROLS CONSTANT PRESSURE DIRECTIONAL PADDLE SWITCH.

SAFETY DEVICES: SLACK CHAIN SAFETY DEVICE

- HYDRAULIC FLOW CONTROL VALVE
- INTERNAL BATTERY DISCONNECT/BREAKER
- GROUNDING ELECTRICAL SYSTEM WITH UPPER, LOWER AND FINAL LIMIT SWITCHES
- 24V OPERATING CONTROLS
- 42" HIGH GUARD PANELS, NON-SLIP PLATFORM, AND ACCESS RAMP SERVICES.
- OPTIONAL SAFETY PAN WITH OBSTRUCTION SENSITIVE CUT-OUT.
- MANUAL LOWERING PULL CABLE.
- OPTIONAL GRAB RAIL MOUNTED ON GUARD PANEL TOWER SIDE.
- STANDARD PRESSURE GAUGE
- MODULAR TOWER

THIS DRAWING REFLECTS OUR INTERPRETATION OF THE INFORMATION THAT YOU THE DEALER PROVIDED ON THE AVPL ORDER FORM. THIS INFORMATION IS YOUR RESPONSIBILITY AND THE BASIS FROM WHICH THIS CUSTOM APPLICATION DRAWING IS DERIVED. PLEASE INDICATE YOUR REQUESTED ACTION BY CHECKING ONE OF THE FOLLOWING OPTIONS AND SIGNING BELOW TO AUTHORIZE COMPLETION OF THIS ORDER.

_____ APPROVED WITH NO EXCEPTIONS. MANUFACTURE THIS UNIT PER THIS DRAWING.

_____ APPROVED AS NOTED. MAKE NOTED CHANGES AND MANUFACTURE. NO REAPPROVAL REQUIRED.

_____ REVISED DRAWINGS REQUIRED WITH NOTED CHANGES. DON'T MANUFACTURE AT THIS TIME.

SIGNATURE OR COMPANY REPRESENTATIVE: _____

DATE APPROVED: _____

PROPRIETARY AND CONFIDENTIAL
 THE INFORMATION CONTAINED IN THIS DRAWING IS THE SOLE PROPERTY OF <COMPANY NAME>. ANY REPRODUCTION IN PART OR AS A WHOLE WITHOUT THE WRITTEN PERMISSION OF <COMPANY NAME> IS PROHIBITED.

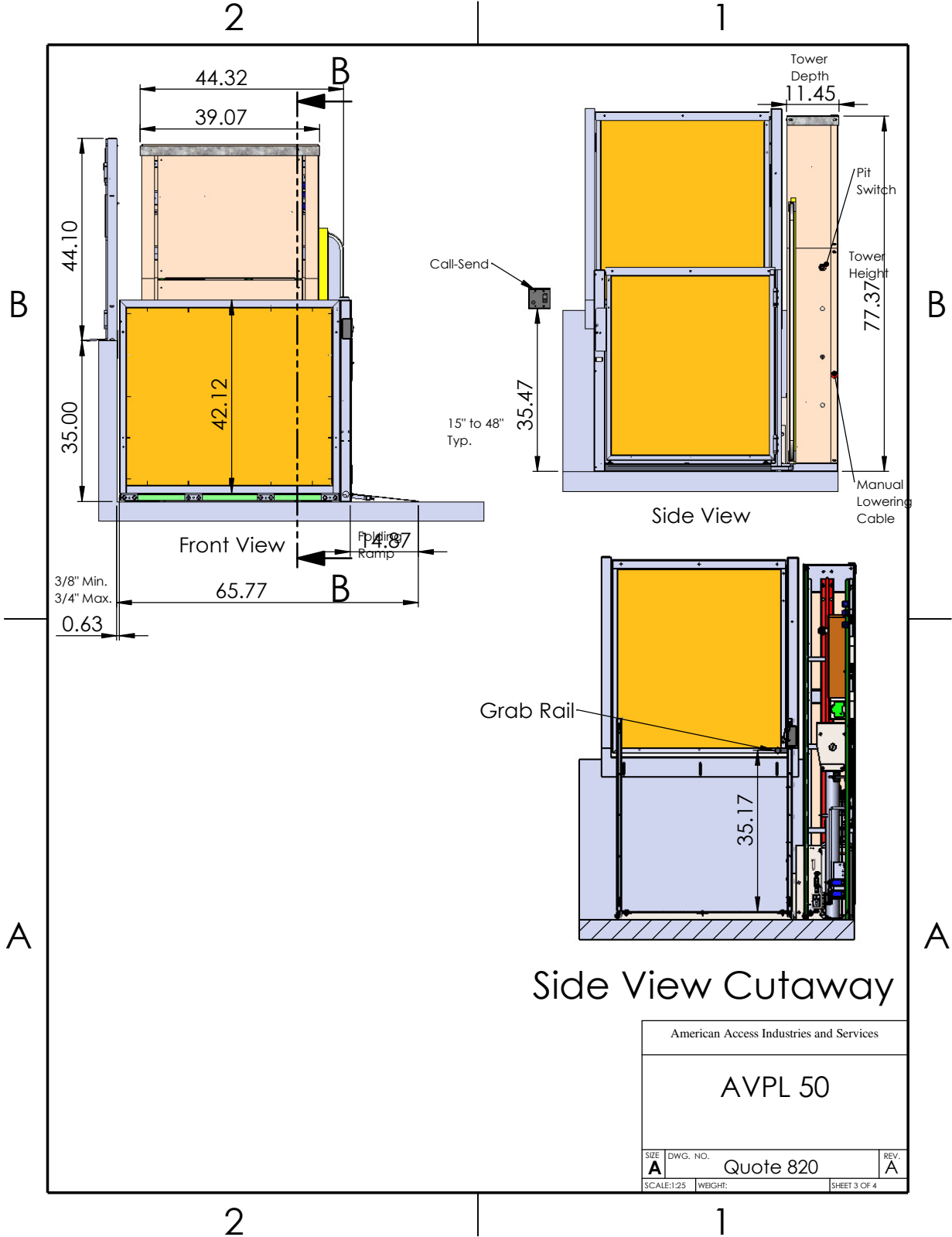
DEALER	J.T. LAWRENCE	AMERICAN ACCESS INDUSTRIES	
CUSTOMER	E.A. DAVIDOUTS & CO.	AVPL 50	
JOB OR PO#	19-004-FRGNT		
	-		
COMMENTS:		SIZE A	DWG. NO. Quote 820
		SCALE: 1:50	WEIGHT:
			REV. A
			SHEET 1 OF 4

B

B

A

A



American Access Industries and Services		
AVPL 50		
SIZE A	DWG. NO. Quote 820	REV. A
SCALE: 1:25	WEIGHT:	SHEET 3 OF 4

