

## 2012-2013 Board of Directors

**President:**

Sergio Galvez, California Lutheran University

**President-Elect:**

Olga Diaz, Embry Riddle Aeronautical University

**Past-President:**

Vacant

**Chief Financial Officer:**

Lia Mauga, California State University San Marcos

**Secretary:**

Maria Garcia, University of Southern California

**Parliamentarian:**

James Oda, Leeward Community College

**Arizona Chapter President:**

Tara Grant, Arizona State University

**Central CA Chapter President:**

Martha Escalera, The National Hispanic University

**Nevada Chapter President:**

Kimberly Williams, Nevada State College

**Northern CA Chapter President:**

Caren Fernandez, CSU Chico

**Pacific Islands Chapter President:**

Teresa Filepin, College of Micronesia-FSM/Yap Campus

**Southern CA Chapter President:**

Yara Jimenez, California State University Los Angeles

## 2012-2013 Service Council

**Legislation/Education Committee:**

Arash Daneshzadeh, Making Waves Education Program

**Membership/Elections Committee:**

Niki Dixon, Pasadena City College

**Professional Development Committee:**

Jesus Angulo, The National Hispanic University

**Public Relations Committee:**

Daniel Fuentes, Cal Poly San Luis Obispo

**Research Committee:**

Vacant

**Resource Development Committee:**

Cristina Aguirre, University of San Diego

**Technology Committee:**

Jevan Gray, University of California, Davis

## **WESTOP Welcomes You!**

For more information, please go to: [www.westop.org](http://www.westop.org)

**WESTOP**

WESTERN ASSOCIATION OF EDUCATIONAL OPPORTUNITY PERSONNEL

ARIZONA • CENTRAL CALIFORNIA • NEVADA • NORTHERN CALIFORNIA • PACIFIC ISLANDS • SOUTHERN CALIFORNIA

# Membership Information 2012-2013



# “The leading Regional Association representing the concerns and needs of Educational Equity Programs and students”

## General Membership Information

1. All memberships are valid from July 1, 2012 -June 30, 2013. The discounted rate ends on September 30, 2012.

2. Membership Fees/ Types:

*Individual /Professional:* \$100 Regular Membership.

A professional membership is open to anyone interested in becoming a member of WESTOP.

Benefits: Professional Development, reduced rates for Regional and Chapter events membership discounts and voting privileges.

Discounted Price-\$65 from July 1, 2012– September 30, 2012

*Corporate:* \$200.00

*Retiree:* \$35.00

*Student:* \$15 per membership year.

Those selecting Student Membership CANNOT be a full-time professional and must provide proof of enrollment. No voting privileges are associated with this membership.

Benefits: Professional Development, Reduced rate at Regional and Chapter events.

*Institutional:* (Based on the Tier System listed below).

Benefits: The entire institution receives reduced rates for Regional and Chapter events BUT voting privileges are based on the Tier System of voting members.

### Tier System:

Discounted Rate-July 1, 2012 – September 30, 2012

1-5 Voting Members \$300

6-10 Voting Members \$575

11-15 Voting Members \$825

16-20 Voting Members \$1,050

20+ Voting Members \$1,050 + \$50 for each additional member after 20 members at the same institution.

Regular Membership Price from October 1, 2012 – June 30, 2013

1-5 Voting Members \$500

6-10 Voting Members \$1,000

11-15 Voting Members \$1,500

16-20 Voting Members \$2,000

20+ Voting Members \$2,000 + \$100 for each additional member after 20 members at the same institution.

## *Institutional Membership– continued*

- Cvent will prompt the person registering for institutional membership for ONE designated person to oversee the membership at that specific institution. This will become the contact for that institution’s membership.
- The individuals listed under the tier system will have voting privileges for the entire membership year. The names of those individuals should be indicated when registering on Cvent. If the names are not available at that time, the designated contact must send the names to the Membership Chair and CFO as soon as possible.
- Only those members on record with the Membership Chair and CFO will be forwarded to the Chapter Presidents as voting members.
- Program funds may be used to purchase institutional membership. Individual membership may not be paid with grant funds.
- Early registration membership discounts are available and expire **September 30, 2012.**
- If you have any questions or require further information regarding membership or payment, please contact:

### Membership Questions

**Niki Dixon**

Membership and Elections Chair

Pasadena City College

[njdixon@pasadena.edu](mailto:njdixon@pasadena.edu)

(626) 585-7364

### Payment Questions

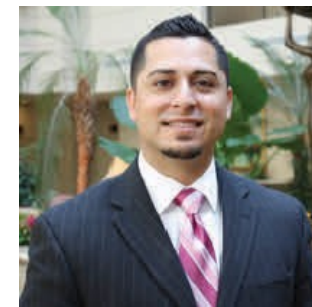
**Lia Mauga**

Chief Financial Officer (CFO)

CSU San Marcos

[lmauga@csusm.edu](mailto:lmauga@csusm.edu)

(760) 750-4013



***Sergio Galvez, 2012 –13 WESTOP President***