



RollEase®

SILENTPIN™

Rest assured...

**...that you are using the RollEase® SILENTPIN™ System,
the quietest idler and brackets available.**

Enjoy the Silence of SILENTPIN™

RollEase® is proud to introduce the quieter and safer solution for large capacity motorized shades. Unlike traditional idlers, the rotation takes place inside the idler around the bronze bushing to reduce noise. The 10mm shaft is engineered to safely lock the motorized shade into the RollEase® brackets. The motor side bracket adds extra security by increasing the "interlock" of the spring clip, preventing the shade from working loose which is a potential problem among other brackets. The brackets can be mounted to the wall or ceiling and have a built-in leveling screw. Both brackets have roll formed edges for improved strength and durability and minimization of noise caused by bracket deflection.

We at RollEase® hope you enjoy this new product as we are dedicated to providing the highest quality window covering solutions to all of our customers.

RollEase® is a distributor of all Somfy motors. Call for pricing.



SILENTPIN™ System Idler

TECHNICAL DATA SHEET

RollEase® SILENTPIN™ Idler

Part Number: MSPE5BK

The SILENTPIN™ Idler fastens to the SILENTPIN™ Idler Bracket to securely capture and lock the 10mm idler shaft to prevent unintentional separation. The method of retention of the idler pin also prevents the shaft from spinning in the bracket. Instead, the rotation of the shade is accomplished by the housing and internal bronze bushing rotating around the steel shaft. This system is exceptionally safe and quiet.

Qualified: The SILENTPIN™ System with the SILENTPIN™ Adapter Sets and RollEase® Tube is life tested to meet RollEase® qualification standards.

Max Load: 254 lbs (115 kgs)

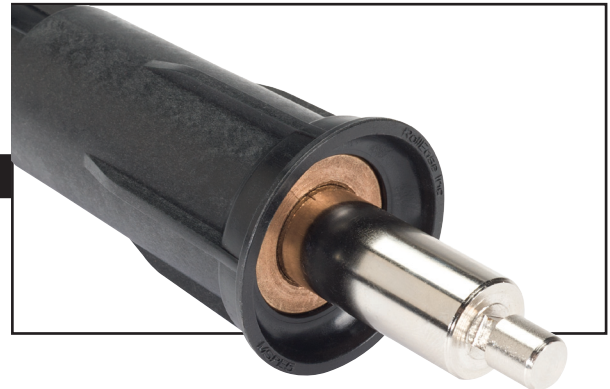
Mounting: Using the SILENTPIN™ Idler, Bracket Set, Adapter Set and RollEase® Tube produces a reliable, safe and remarkably quiet motorized shade. On applications over 10' wide it is recommended to fasten the yellow drive wheel of the idler into the tube.

Adjustability: The SILENTPIN™ Idler shaft can travel longitudinally 1.375" (35mm) allowing for some flexibility during installation. The more compressed the shaft, the minimal the light gap.

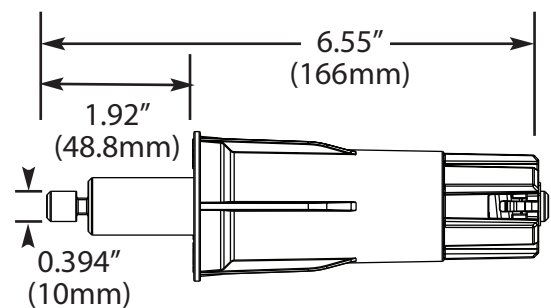
Total Tube Deductions: Minimum 1.5" (0.75" motor and Idler equal on both sides) Maximum 2.5" (0.75" motor and 1.75" Idler).

Achievable Minimum Light Gap: 0.75" minimum per side.

RollEase® SILENTPIN™ Adapter Sets:



SILENTPIN™ Idler MSPE5BK



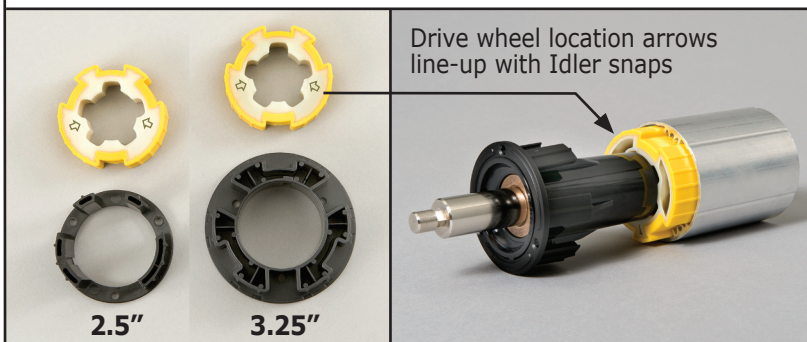
RollEase® SILENTPIN™ Idler Fits These Tube Sizes:

2" Smooth Wall Tube: RTEASW5T14
Tube must be notched. No adapters necessary.

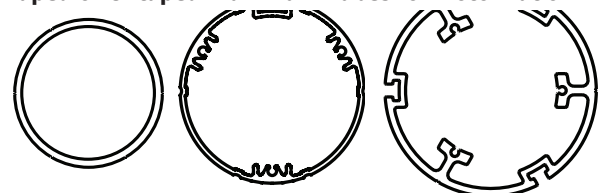
2.5" (63mm) Profile Tube: RTEA6T16
Use Motor Adapter Set: **RTA6U50BK**

3.25" (83mm) Profile Tube: RTEA7T16
Use Motor Adapter Set: **RTA7U50**

The adapter set consists of a crown, drive and screws custom fit to RollEase® profile tubes. The drives are overmolded with a soft thermoplastic elastomer to dampen noise produced from motor vibration.



Taped or Untaped Aluminum Tubes for Motorization



Tube must
be notched

Crown Drive Avoids Notching

SILENTPIN™ Bracket Set

Used with all LT50, Sonesse 50 Somfy Star Head Motors

TECHNICAL DATA SHEET

The RollEase® SILENTPIN™ Bracket Set is formed from 12 gage (0.105"/2.7mm) steel with deep drawn edges for strength, silence and style. The heavy wall construction design prevents movement and deflection during operation which eliminates a source of noise in otherwise quiet motor installations.

The RollEase® SILENTPIN™ Motor Bracket

Part Number: MSBM6 (Zinc/White)

Bracket is designed to accept the Somfy® star head motors. The motor snaps easily into bracket and adds extra security by increasing the "interlock" of the spring clip. This prevents the shade from working loose which is a potential problem among other brackets.

The RollEase® SILENTPIN™ Idler Bracket

Part Number: MSBI6 (Zinc/White)

Bracket includes an adjustable "Idler Plate" for the SILENTPIN™ Idler which incorporates a shade leveling screw. The Idler Plate can be oriented for ceiling or wall mount installations. The SILENTPIN™ Idler shaft drops into a slot in the Idler Plate, securely retaining the pin end. The leveling screw adjusts a total of 0.375" (9.5mm) allowing for some correction during installation. With these special features, the SILENTPIN™ Idler Bracket can only be used with the SILENTPIN™ Idler. The bracket does not support any other idler.

Common Data for Both Brackets:

Mounting: Optimal performance is realized with the pairing of the SILENTPIN™ System Bracket Set and SILENTPIN™ Idler. Together they offer a secure, adjustable and silent means of mounting a motorized shade with unmatched performance. Shades can be ceiling, wall or side mounted.

Max Load: 254 lbs (115 kgs)

Qualified: The SILENTPIN™ System with the SILENTPIN™ Adapter Sets and RollEase® Tube is life tested to meet RollEase® qualification standards.

Projection: 2.5" (63mm)

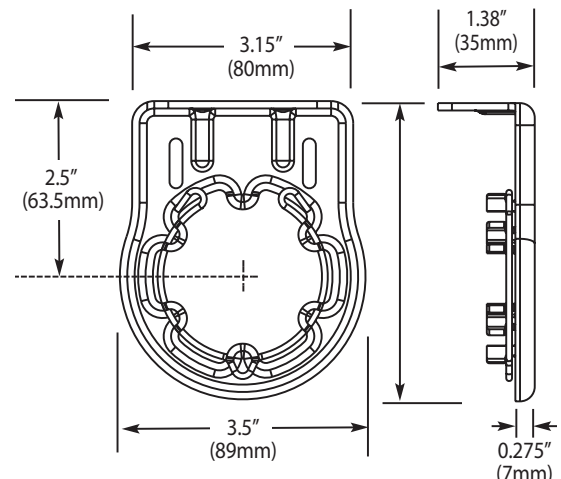
Maximum Roll Diameter: 4.5" (114mm) maximum roll diameter, 3.5" diameter (90mm) to allow for drop in installation on pin end side.

Total Tube Deduction: Minimum 1.5" (0.75" Motor and Idler equal on both sides) Maximum 2.5" (0.75" motor and 1.75" Idler).

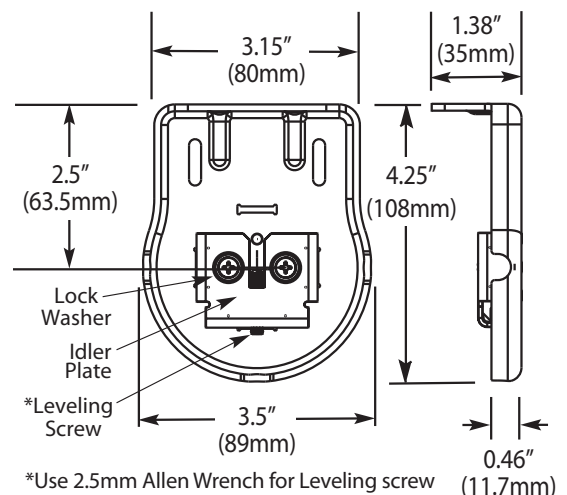
Achievable Minimum Light Gap: 0.75" minimum per side.



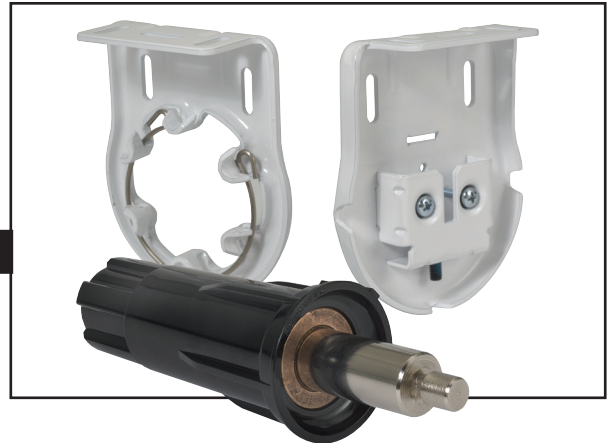
SILENTPIN™ MOTOR BRACKET - MSBM6



SILENTPIN™ IDLER BRACKET - MSBI6

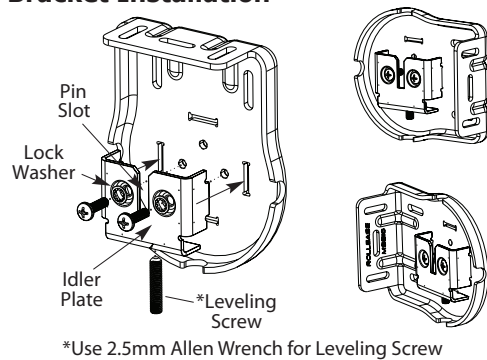


SILENTPIN™ System INSTALLATION GUIDE

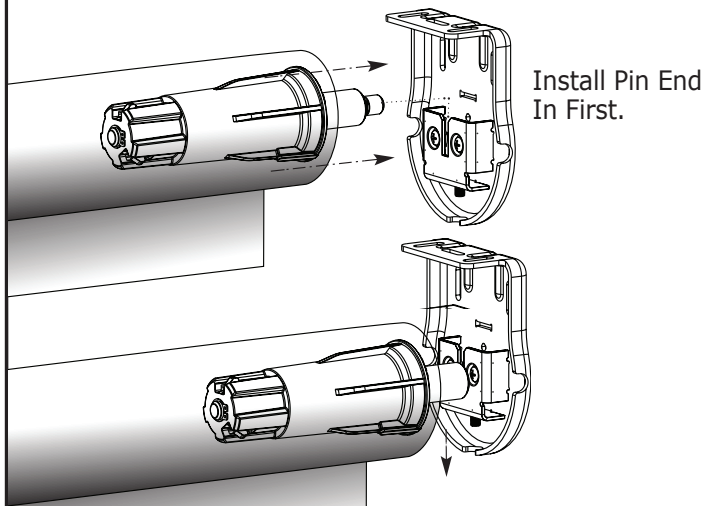


SILENTPIN™ IDLER BRACKET MSBI6

Idler Bracket Installation



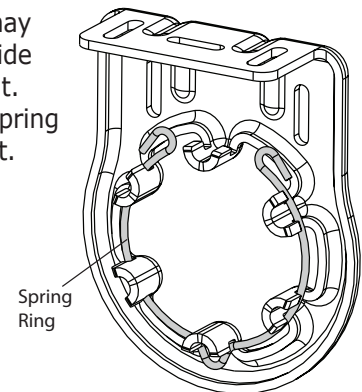
The Idler Plate must be positioned with the "U" shaped Pin Slot **up**. Align the Idler Plate in the appropriate three slots and secure with the two screws and lock washers provided. Next, drop in SILENTPIN™ Idler into Bracket. After the shade is installed, adjust the leveling screw as required.



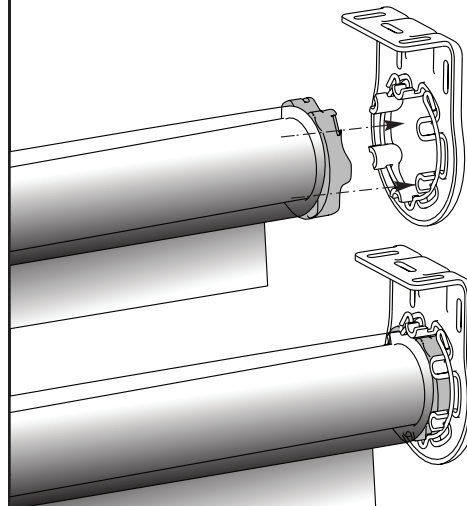
SILENTPIN™ MOTOR BRACKET MSBM6

LT50, Sonesse-50 Motor Bracket Installation

The Motor Bracket may be top mounted or side mounted, left or right. Do not remove the spring ring from the bracket.



Press the motor into the bracket, spring ring will open slightly allowing the motor to enter and then the spring will close, firmly locking the motor to the bracket. Ensure the spring ring is inside the groove of the bracket and the motor.



Motorized Accessories

RollEase is a distributor of all Somfy motors. Call for pricing.



	COMPONENT	PART	BOX PACK SIZE
	SILENTPIN™ 2.5 inch (63mm) Crown and Drive Tube Adapter Set Set consists of (1) Drive and (1) Crown with (3) screws. For use with SILENTPIN™ Pin-End and RollEase 2.5" (63mm) tube, Use (2) sets per shade; (1) set with motor, (1) set with Pin-End	RTA6U50	20 sets
	SILENTPIN™ 2.5 inch (63mm) Crown only	RTA6CROWN With a screw pack	20 sets
	SILENTPIN™ 3.25 inch (83mm) Crown and Drive Tube Adapter Set Set consists of (1) Drive and (1) Crown with (3) screws. For use with SILENTPIN™ Pin-End and RollEase 3.25" (83mm) tube, Use (2) sets per shade; (1) set with motor, (1) set with Pin-End	RTA7U50	20 sets
	SILENTPIN™ LT50, Sonesse-50 Motor Bracket	MSBM6 (Zinc) MSBM6W (White)	1 1
	SILENTPIN™ Idler Bracket (LT50, Sonesse-50)	MSBI6 (Zinc) MSBI6W (White)	1 1
	SILENTPIN™ 10mm Retractable Idler	MSPE5BK	1
	2" Smooth Wall Tube 14' Long 2.5" (63mm) Profile Tube 16' Long 3.25" (83mm) Profile Tube 16' Long	RTEASW5T14 RTEA6T16 RTEA7T16	4 4 2

OTHER MOTORIZED ACCESSORIES PRICELIST

	Skyline Bracket Motorized Adapter for Somfy® Wirefree™ battery motors. Use with 12 VDC Somfy® Roll Up WireFree (LT-30) Motor and RollEase Skyline Brackets (Skyline 1.25" (32mm) Pin-End) or (Skyline 1.5" (38mm) Pin-Ends).	SLAMLT30(W/BK)	25
	Skyline Bracket Motorized Adapter for Somfy® Sonesse 30 motors. Use with hard-wired Somfy® SONESSE 30 (ST-30) Motor and RollEase Skyline Brackets for Skyline 1.5" (38mm) Pin-End. (Includes adapter to motor mounting screws).	SLAMST30(W/BK)	25
	ST-30 to 40mm Tube, Adapter Kit	SOMF9013776	1
	40mm Motor Crown and Drive Set (50mm profiled Tube Adapter Set)	RTA5LS40	20 sets
	LS40 Skyline Motor Adapter	XLS40SLAM(BK)	25
	LS40 Drive Stop and Screw	SOMF9147894	1