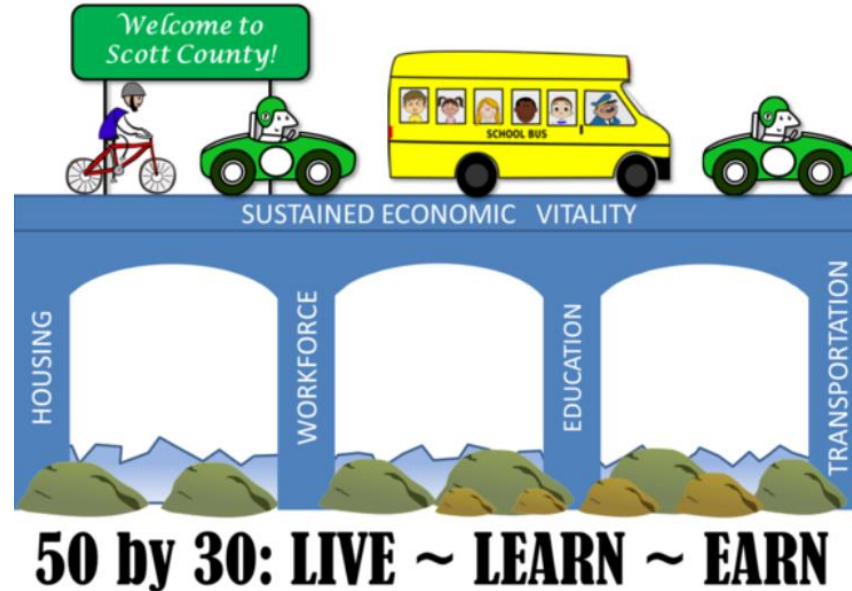


# 50 by 30

## Live, Learn, Earn



Project Retreat  
February 28, 2017

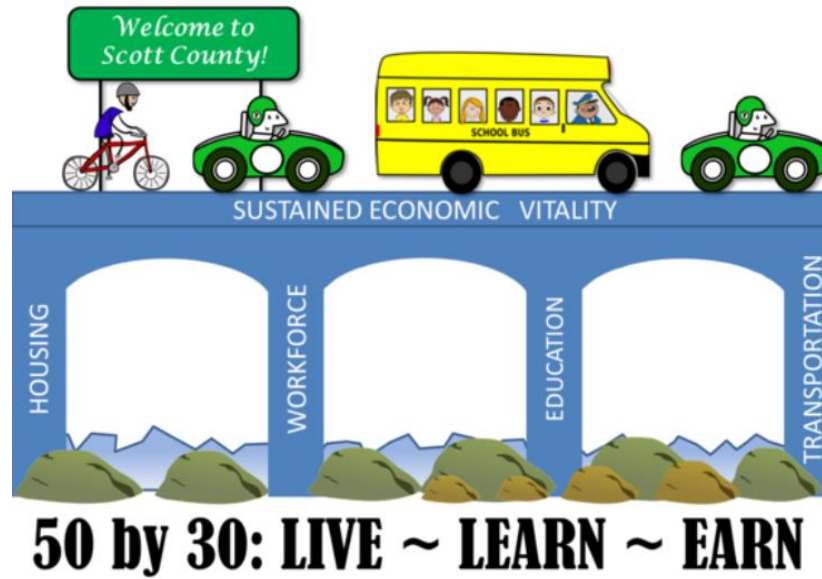
# Agenda

- ▶ Opening
- ▶ Work Group Reports, Cross–Pillar Discussion
  - Housing
  - Workforce Development
  - Educational Preparedness
  - Transportation
- ▶ Break for Dinner
- ▶ Cross–Pillar Discussion, Reports
- ▶ Closing



# 50 by 30

## Live, Learn, Earn



## Housing Data Story

# Outline

- ▶ Vision
- ▶ Big Questions
- ▶ Current status of Housing in Scott County



# Housing Workgroup Vision

Create housing options that give people in all stages of life and of all economic means viable choices for safe, stable and affordable homes.

Taken from 2040 Thrive MSP Housing Policy Plan



# Big Questions

- ▶ How do we develop a shared understanding of housing terms and definitions, such as “affordable,” “workforce housing,” “executive,” “senior,” “subsidized,” “market rate,” and “homelessness”?
- ▶ What can we do to ensure that all households have the opportunity to spend less than 30% of household income on safe and stable housing?



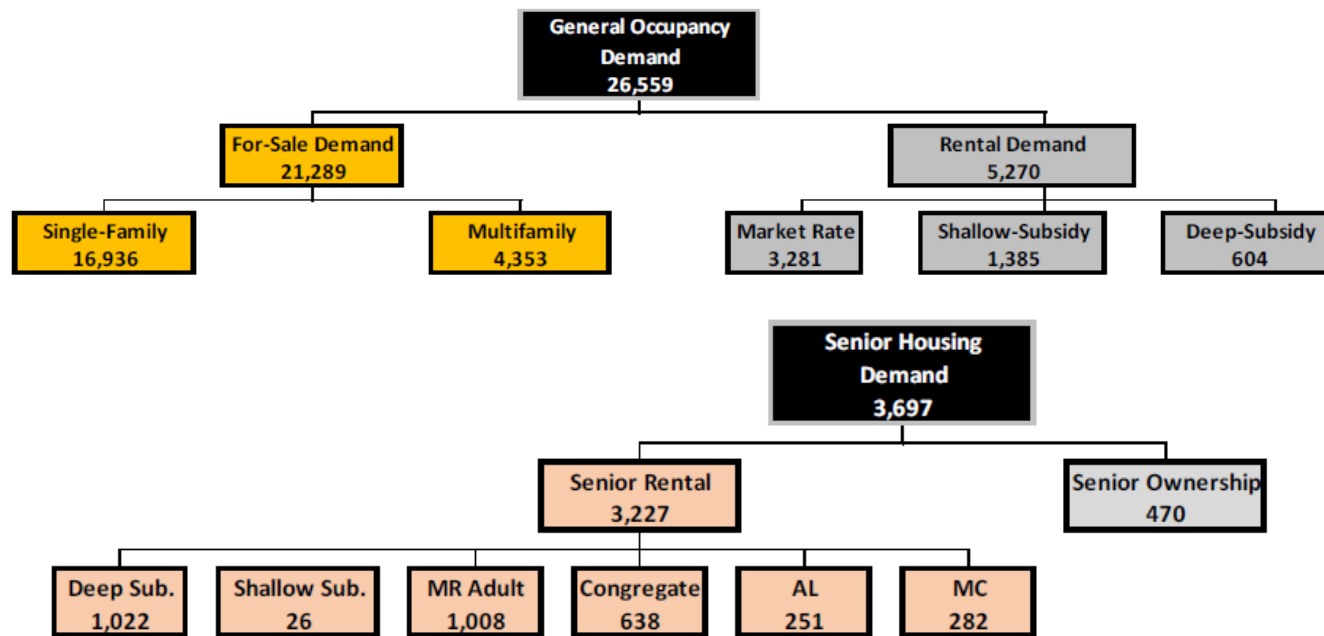
# Big Questions

- ▶ How do we better integrate housing and employment concentrations to provide options for non-car ownership households in Scott County?
- ▶ How can we provide a wide range of housing options for a resident's entire life in the county?



# Current Status of Housing in Scott County

Housing Demand in Scott County  
General Occupancy & Senior Housing  
2017-2040 (24 years)



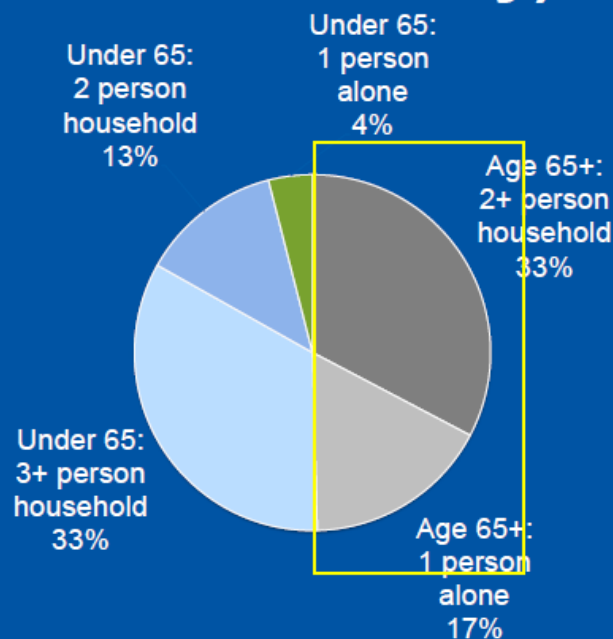
Source: Maxfield Comprehensive Housing Needs Update  
Scott County, November 2016





# Current Status of Housing in Scott County

The new market demand *is old*  
(in Scott County)



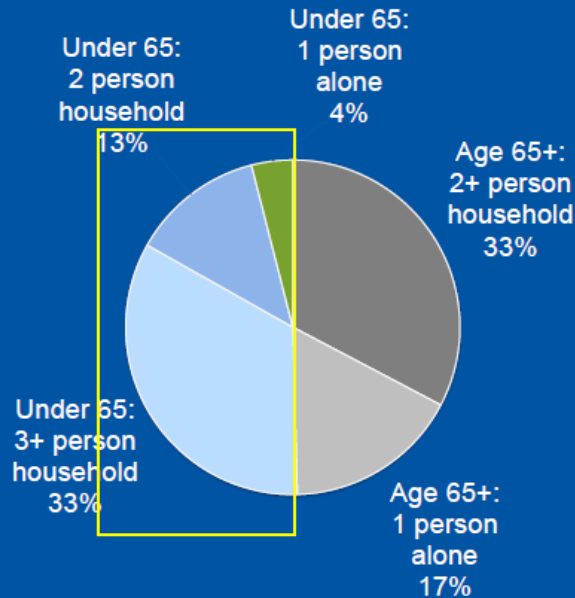
Half of household growth among 65+

Source: 2040 forecasts from the Metropolitan Council (March 2015 release)



# Current Status of Housing in Scott County

The new market demand *is old*  
(in Scott County)



Less than  
half net  
new  
households  
will have  
children

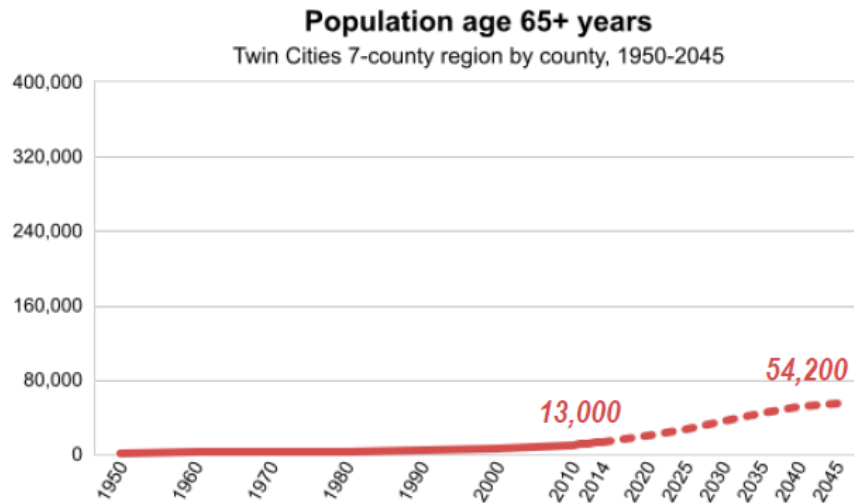
Source: 2040 forecasts from the Metropolitan Council (March 2015 release)



# Current Status of Housing in Scott County

*In Scott County...*

**Greater growth in older adult population than any other Twin Cities county**



*Scott's older adult population is expected to more than quadruple by 2045*

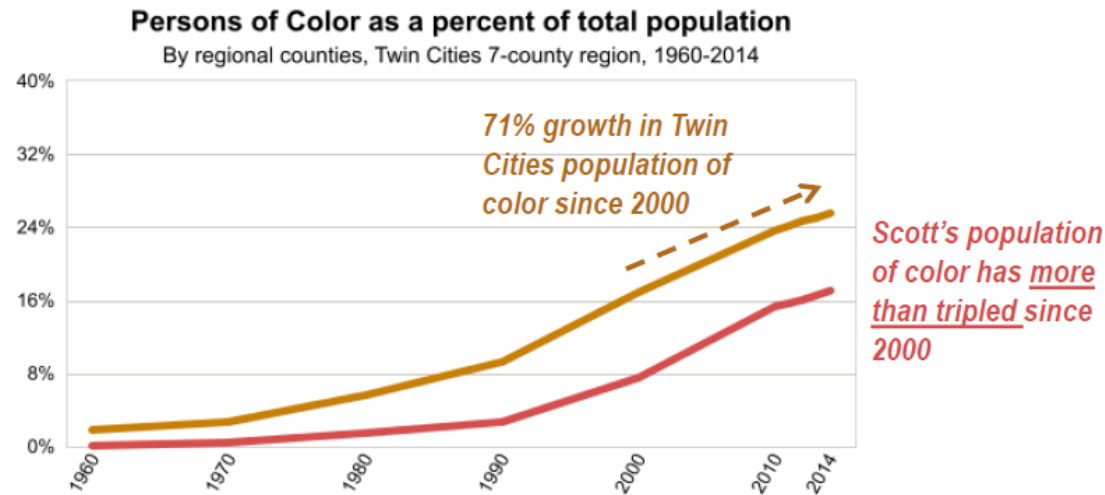
@MNCompass



# Current Status of Housing in Scott County

*In Scott County...*

**Growth in populations of color have far outpaced growth region-wide**



@MNCompass



# Current Status of Housing in Scott County

What does affordable housing look like at different income levels?

|             | Income limit Family of 4   | 30% Housing per month | Est. home to purchase w/ 5% down |
|-------------|--|-----------------------|----------------------------------|
| 30%         | \$25,750   | \$644                 | \$83,189                         |
| 60%         | \$51,480   | \$1,287               | \$166,314                        |
| 80%         | \$65,700   | \$1,643               | \$212,254                        |
| 100%        | \$85,800   | \$2,145               | \$277,190                        |
| 120%        | \$102,950  | \$2,574               | \$332,595                        |
| data source | <a href="https://www.huduser.gov/portal/datasets/il.html">https://www.huduser.gov/portal/datasets/il.html</a><br><a href="https://www.huduser.gov/portal/datasets/mtsp.html">https://www.huduser.gov/portal/datasets/mtsp.html</a> |                       |                                  |



# Current Status of Housing in Scott County

## RENTAL RATE COMPARISONS

### Proposed Market Rate Apartment in Prior Lake (150 units):

- 1-bedroom unit = \$1,375/mo.
- 2-bedroom unit = \$1,775/mo.
- 3-bedroom unit = \$1,950/mo.

### Proposed Tax Credit Affordable Workforce Apartments in Prior Lake (68 units):

- 1-bedroom unit = \$805/mo.
- 2-bedroom unit = \$995/mo.
- 3-bedroom unit = \$1,115/mo.



# Current Status of Housing in Scott County

## Median Home Sale Price (12/31/16)

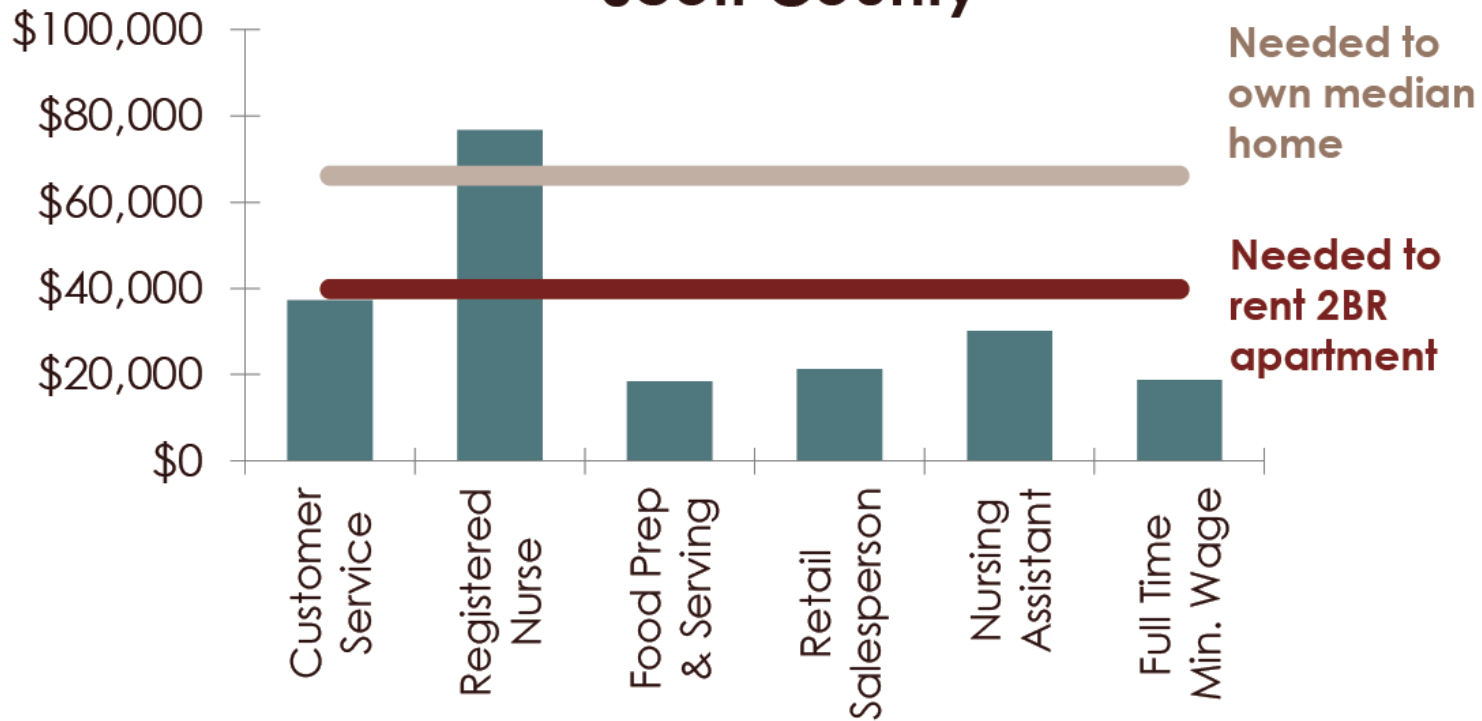
|                   |                       |
|-------------------|-----------------------|
| ➤ Scott County    | \$257,000             |
| ➤ Prior Lake      | \$294,500 (639 sales) |
| ➤ Savage          | \$265,000 (645 sales) |
| ➤ Shakopee        | \$222,000 (817 sales) |
| ➤ Belle Plaine    | \$207,050 (180 sales) |
| ➤ Elko New Market | \$305,000 (101 sales) |
| ➤ Jordan          | \$255,000 (115 sales) |
| ➤ New Prague      | \$250,000 (185 sales) |
| ➤ Twin Cities     | \$232,000             |

Source: Minneapolis Area Association of Realtors,  
Local Market Updates, Dec. 2016



# Current Status of Housing in Scott County

## Housing Affordability by Occupation, Scott County



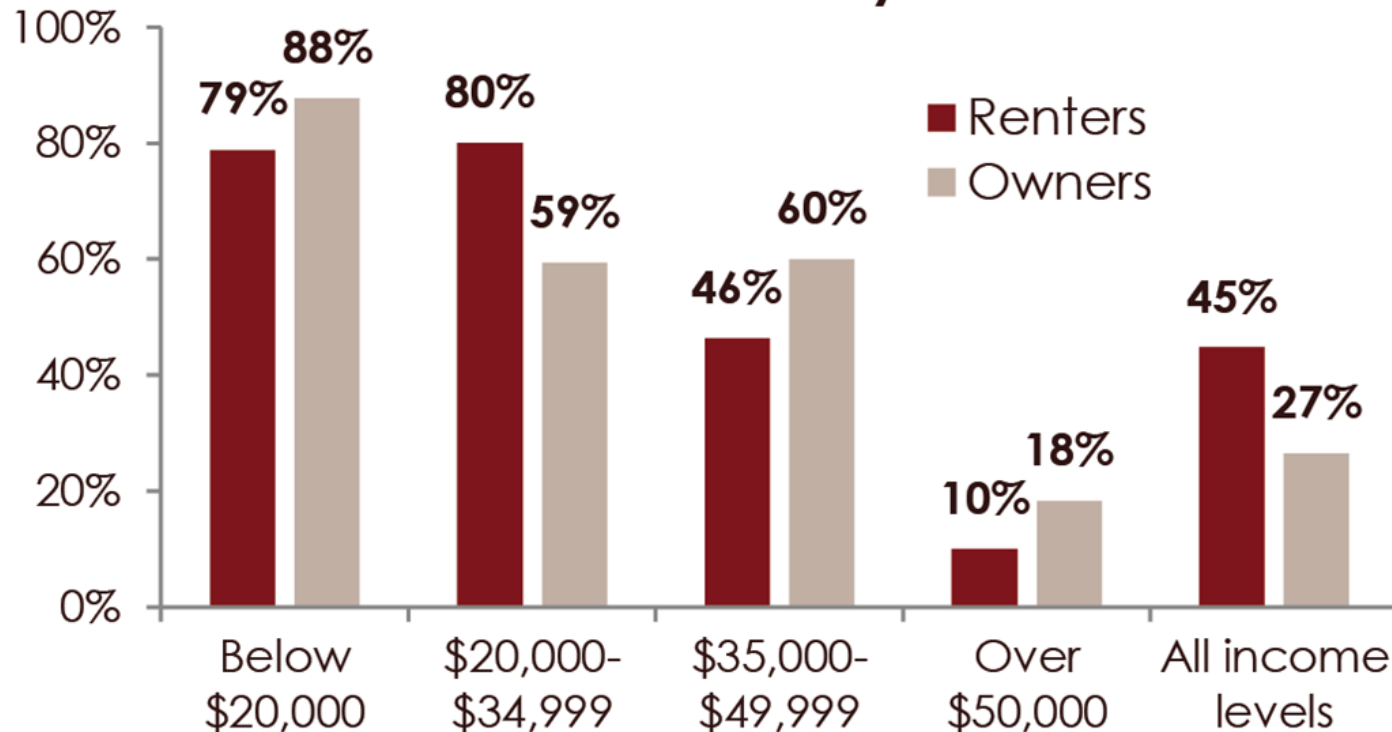
Source: Minnesota Housing Partnership County Profile, 2015





# Current Status of Housing in Scott County

## Proportion of Households Paying 30% or More of Income for Housing, Scott County



Source: Minnesota Housing Partnership County Profile, 2015



# Current Status of Housing in Scott County

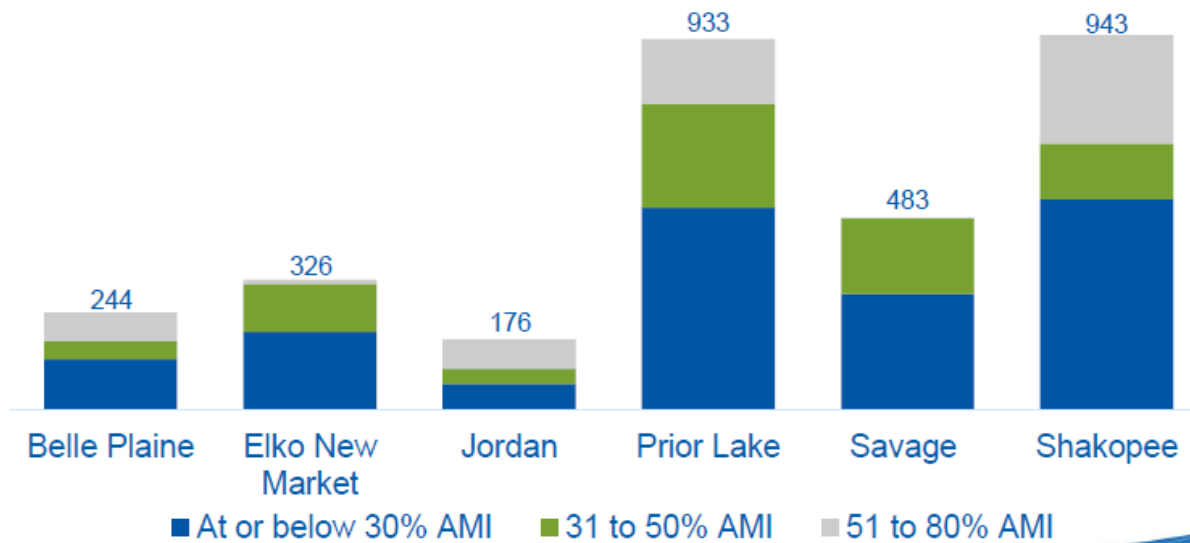
| City            | Vacancy Rates |              |              |
|-----------------|---------------|--------------|--------------|
|                 | Total Units   | Vacant Units | Vacancy Rate |
| Shakopee        | 1,333         | 12           | 0.9%         |
| Savage          | 694           | 0            | 0.0%         |
| Prior Lake      | 145           | 11           | 7.6%         |
| Jordan          | 51            | 1            | 2.0%         |
| Belle Plaine    | 16            | 0            | 0.0%         |
| New Prague*     | 68            | 3            | 4.4%         |
| <b>Subtotal</b> | <b>2,307</b>  | <b>27</b>    | <b>1.2%</b>  |

Source: Market Rate Units  
Maxfield Comprehensive Housing Needs Update  
Scott County, November 2016



# Current Status of Housing in Scott County

## Allocation of affordable housing need, 2021-2030



Source: Metropolitan Council, 2040 Housing Policy Plan



# Current Status of Housing in Scott County

## SCOTT COUNTY LOT INVENTORY

The Met Council's 25-year household forecast (2016 – 2040) =  
1,030 average annual growth for Scott County

**Prior Lake:** 12/31/16 supply = 154 lots (single family & townhomes)  
Avg. annual demand = 220 units

**Savage:** 12/31/16 supply = 259 lots (single family & townhomes)  
Avg. annual demand = 170 units

**Shakopee:** 12/31/16 supply = 128 lots (single family & townhomes)  
Avg. annual demand = 215 units

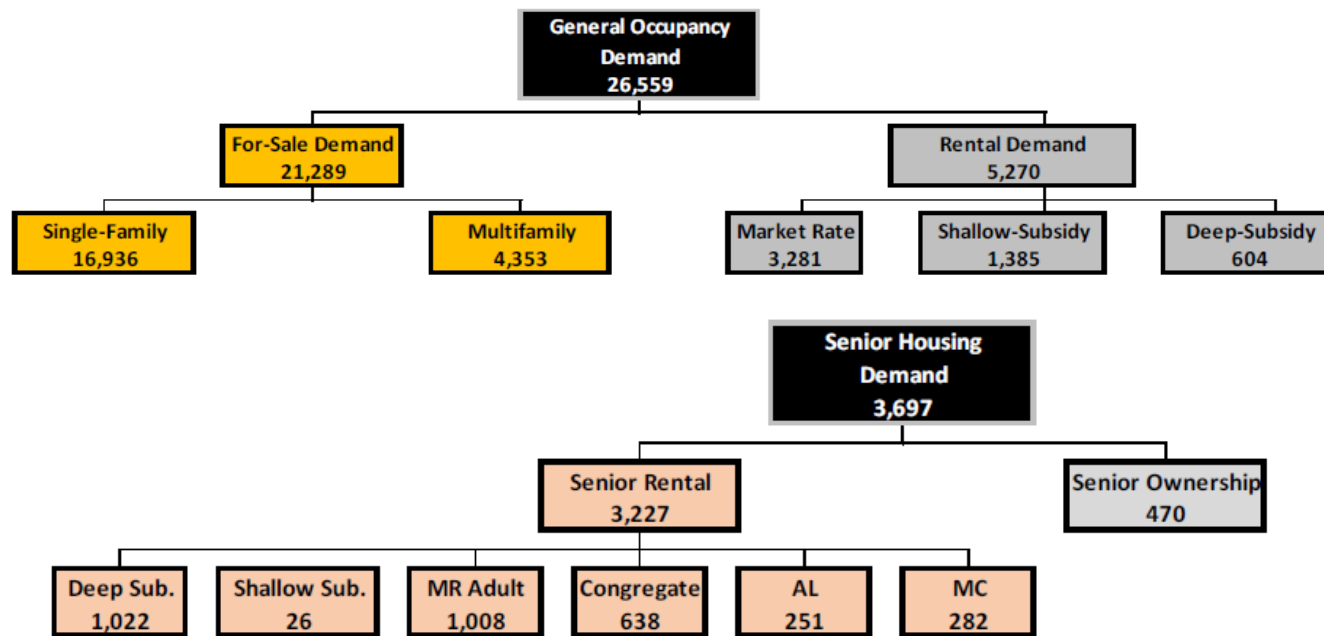
**3 Cities:** 12/31/16 supply = 541 lots (single family & townhomes)  
Avg. annual demand = 605 units

**CONCLUSION:** Current supply = 89% of 1-year demand  
Normal supply = 3 years x demand



# Current Status of Housing in Scott County

Housing Demand in Scott County  
General Occupancy & Senior Housing  
2017-2040 (24 years)



Source: Maxfield Comprehensive Housing Needs Update  
Scott County, November 2016

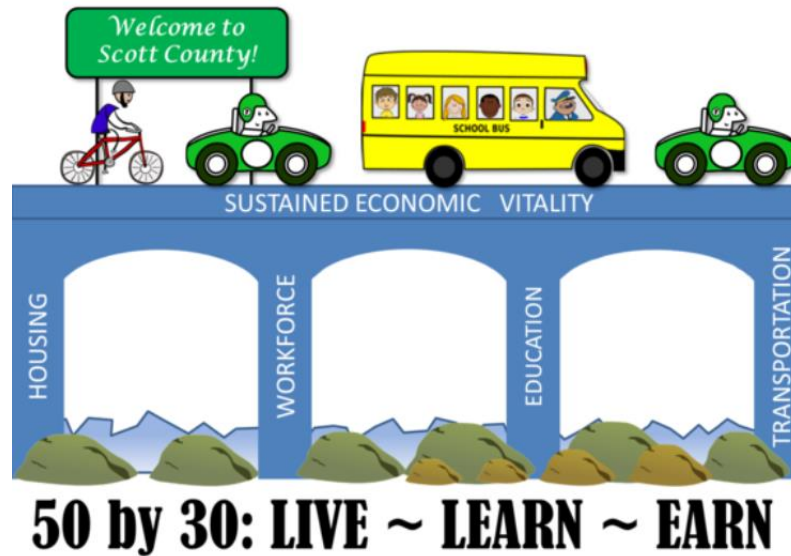


# Discussion

- ▶ What does the data say to you?
- ▶ What surprised you about the data?
- ▶ What don't we know?



# 50 by 30 Live, Learn, Earn



Workforce Development Data Story

# Outline

- ▶ Vision
- ▶ Big Questions
- ▶ Current State





# Vision

- ▶ Elevate each person's contribution to the community through a rich variety of local employment opportunities and career pathways

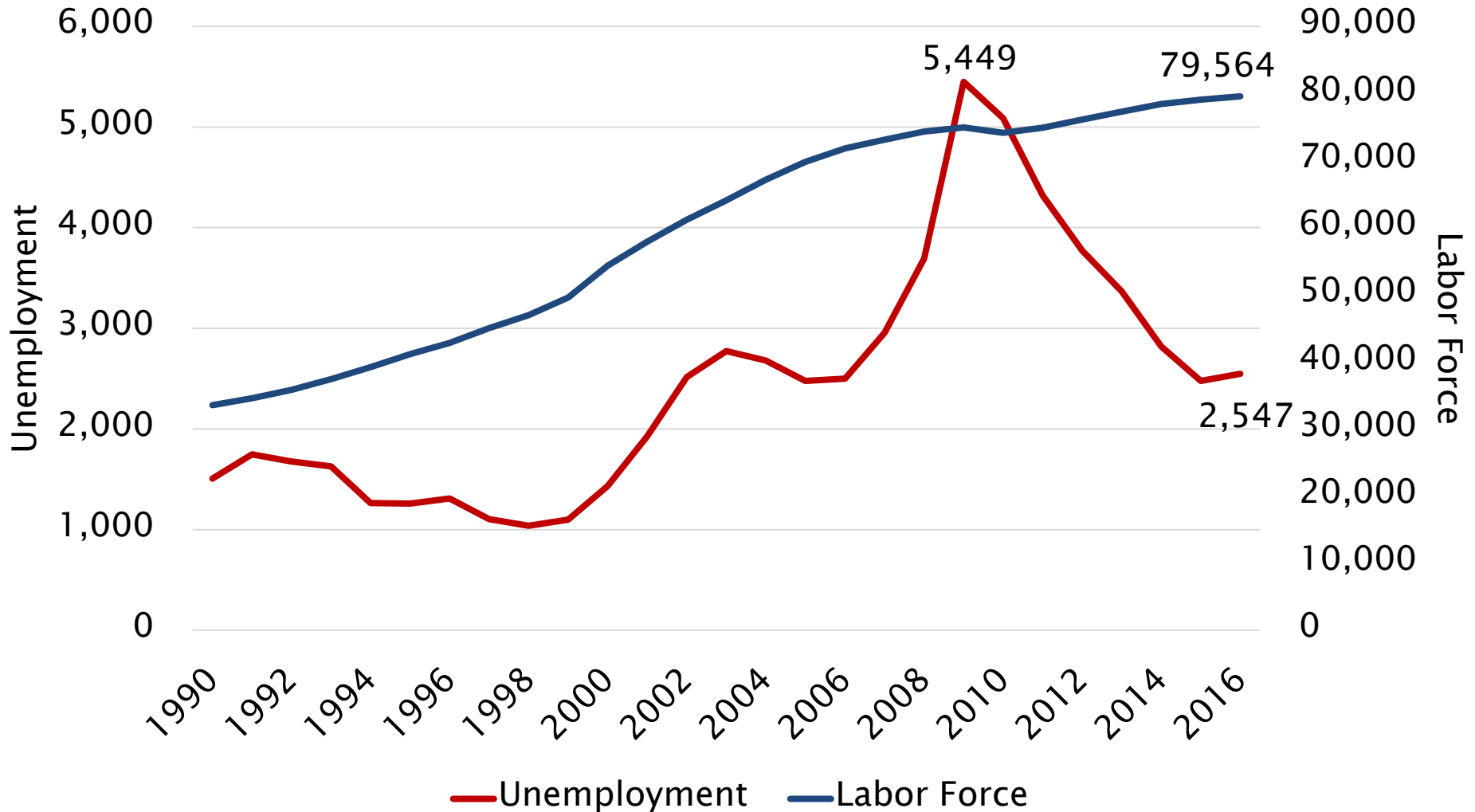


# Big Picture Questions

- ▶ What are local employer needs/gaps/concerns for their workforce?
- ▶ Are there alternatives and creative workforce solutions to help local employers/job seekers based on best practices and industry trends?
- ▶ What are the gaps between post-secondary opportunities in the community and workforce skills training needs?



# Scott County Labor Force Trends



# Age Trends in Scott County

2010 – 2015 ACS 5-Year Estimates

| Age               | Total          | Labor Force Participation Rate | Unemployment Rate | 2010 – 2015 Change |
|-------------------|----------------|--------------------------------|-------------------|--------------------|
| <b>Total, 16+</b> | <b>101,807</b> | <b>76.8%</b>                   | <b>4.6%</b>       | <b>10.8%</b>       |
| 16 to 19 years    | 7,624          | 53.2%                          | 13.4%             | 14.0%              |
| 20 to 24 years    | 6,608          | 86.1%                          | 10.7%             | 16.7%              |
| 25 to 44 years    | 39,487         | 90.2%                          | 2.8%              | -3.3%              |
| 45 to 54 years    | 21,874         | 91.7%                          | 4.4%              | 15.9%              |
| 55 to 64 years    | 13,971         | 74.0%                          | 4.7%              | 30.8%              |
| 65 to 74 years    | 7,415          | 28.4%                          | 3.6%              | 38.5%              |
| 75 years+         | 4,828          | 6.7%                           | 9.6%              | 28.0%              |

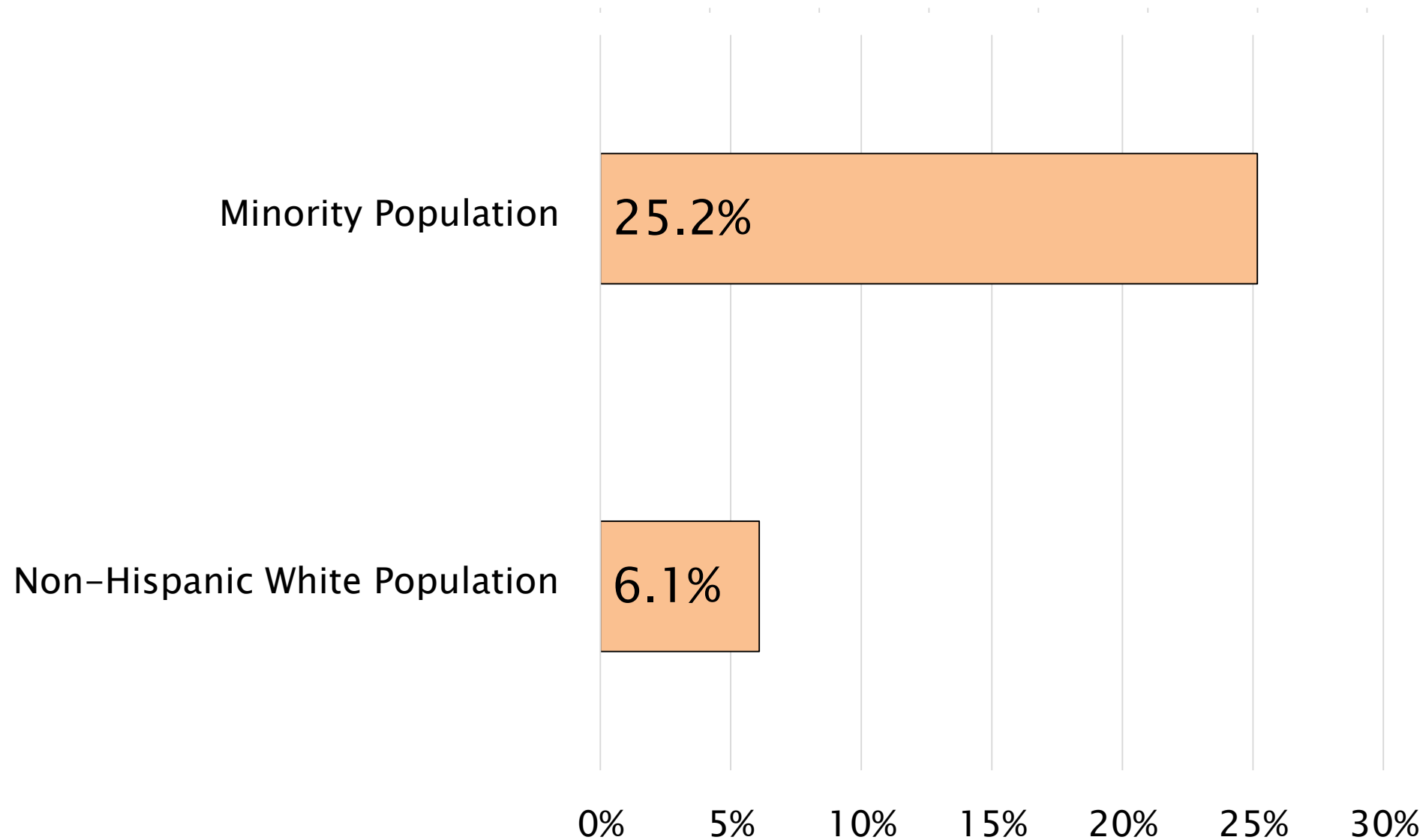
# Race & Ethnicity in Scott County

2010 – 2015 ACS 5-Year Estimates

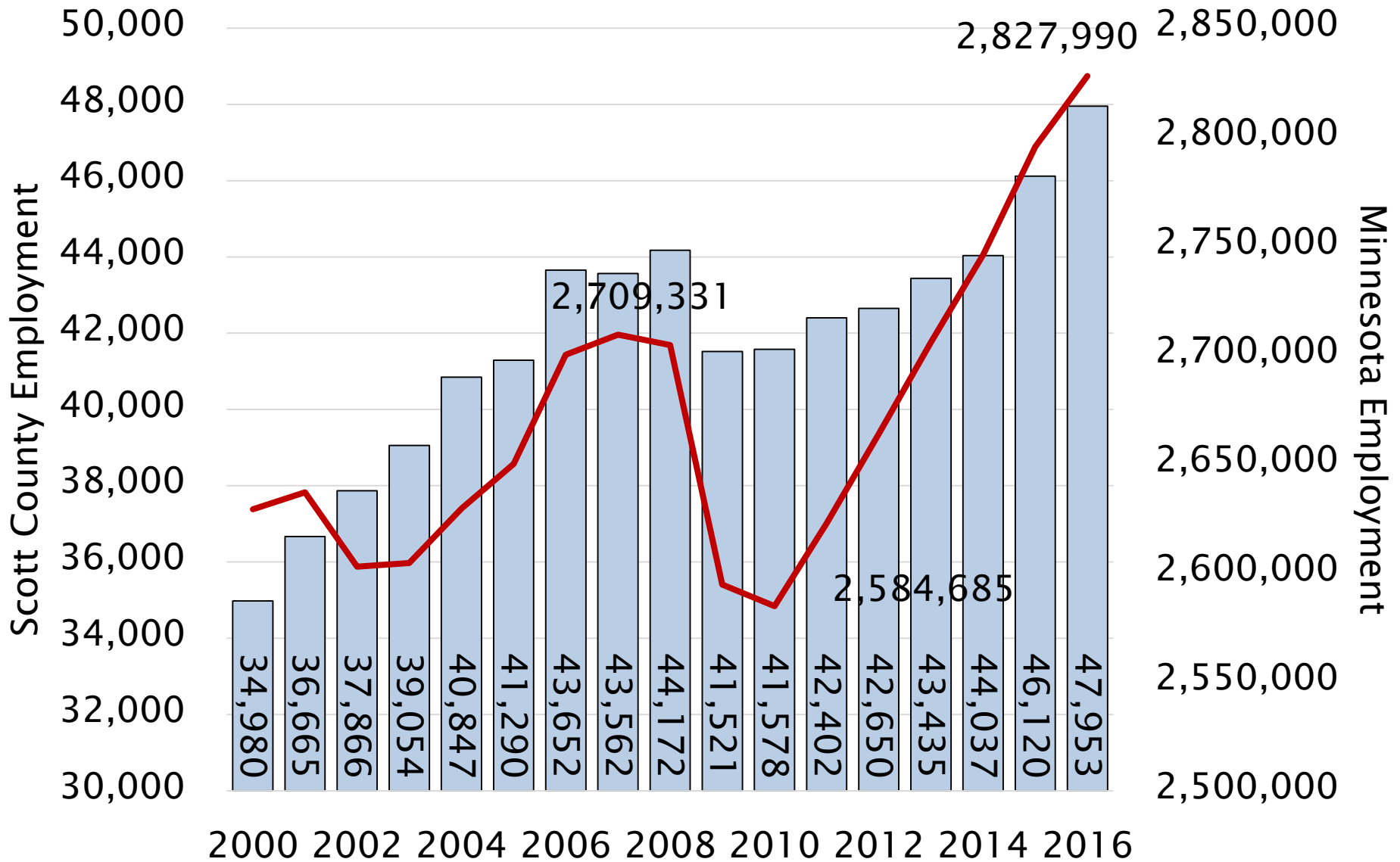
| Age                         | Total          | Labor Force Participation Rate | Unemployment Rate | 2010 – 2015 Change |
|-----------------------------|----------------|--------------------------------|-------------------|--------------------|
| <b>Total Population 16+</b> | <b>101,807</b> | <b>76.8%</b>                   | <b>4.6%</b>       | <b>10.8%</b>       |
| White                       | 89,348         | 77.2%                          | 4.1%              | 8.3%               |
| Black or African American   | 2,865          | 65.8%                          | 11.5%             | 49.3%              |
| American Indian             | 688            | 51.6%                          | 13.0%             | 8.2%               |
| Asian                       | 5,908          | 78.4%                          | 4.4%              | 25.0%              |
| Some Other Race             | 1,360          | 77.8%                          | 10.3%             | 25.5%              |
| Two or More Races           | 1,471          | 75.5%                          | 18.9%             | 53.9%              |
| Hispanic or Latino          | 4,117          | 79.5%                          | 8.8%              | 25.8%              |

# Race & Ethnicity in Scott County

2010 - 2015 ACS 5-Year Estimates



# Total Employment Trends



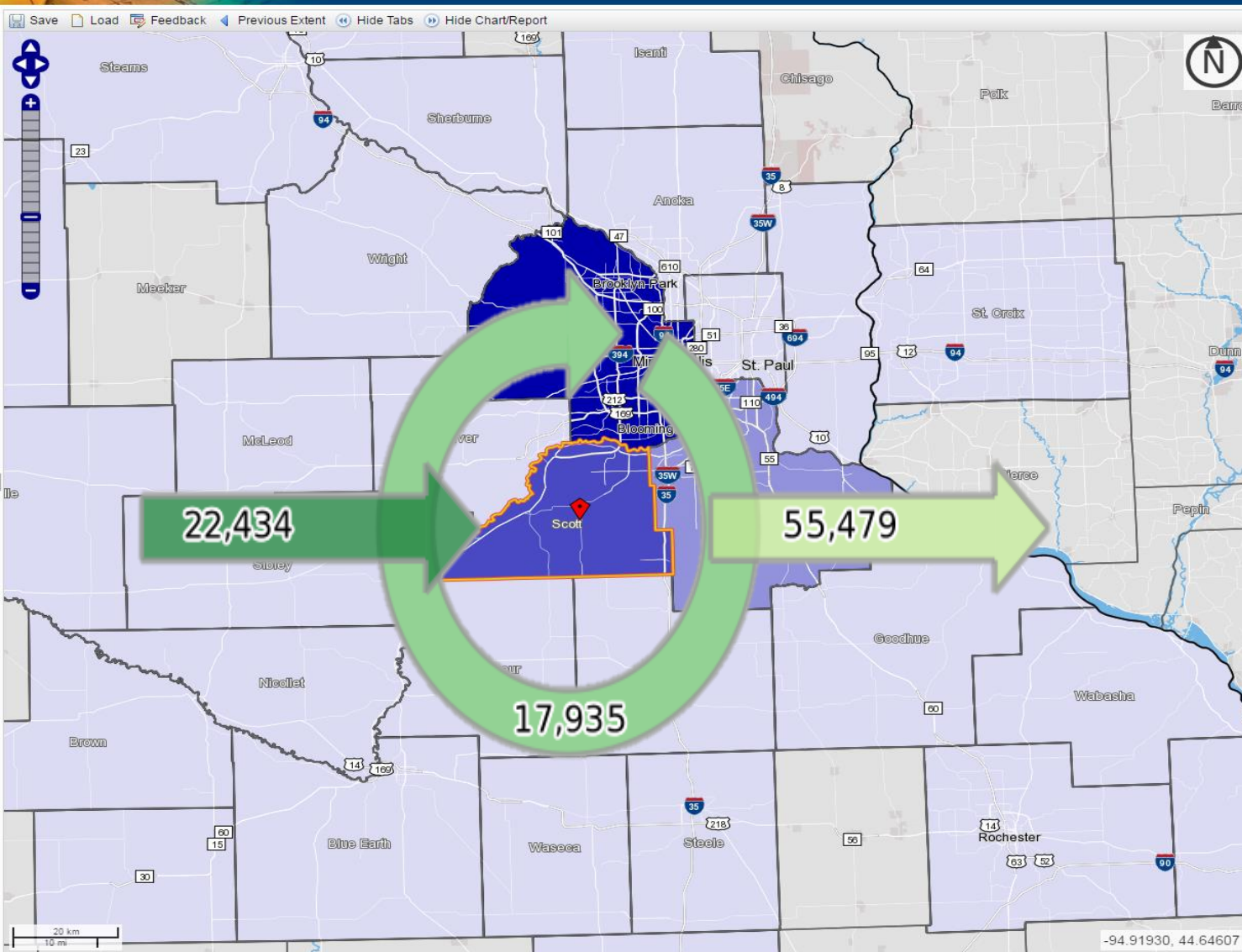
# Distinguishing Industries in Scott County

| Industry Title                               | Q2 2016<br>Number of<br>Jobs | Location<br>Quotient | Avg. Annual Job<br>Growth '10 - '15 |
|--|------------------------------|----------------------|-------------------------------------|
| Accommodation                                | 3,187                        | 5.4                  | -1.1%                               |
| Printing & Related Support Activities        | 1,425                        | 3.7                  | 9.3%                                |
| Heavy & Civil Engineering<br>Construction    | 1,100                        | 2.6                  | 3.5%                                |
| Amusement, Gambling, & Recreation            | 1,636                        | 2.6                  | 0.6%                                |
| Specialty Trade Contractors                  | 2,712                        | 2.1                  | 7.2%                                |
| Construction of Buildings                    | 875                          | 2.0                  | 16.8%                               |
| Transit & Ground Passenger<br>Transportation | 659                          | 2.0                  | 13.4%                               |
| Computer & Electronic Product Mfg.           | 1,288                        | 1.7                  | 3.1%                                |
| Repair & Maintenance                         | 578                          | 1.6                  | 0.5%                                |
| Merchant Wholesalers, Durable<br>Goods       | 1,553                        | 1.4                  | 3.2%                                |



# Scott County Inflow/Outflow

LEHD Home Help and Documentation Reload Text-Only



view as **Bar Chart**

**Jobs Counts by Counties Where Workers are Employed - All Jobs**

|                               | 2014   |        |
|-------------------------------|--------|--------|
|                               | Count  | Share  |
| <b>All Counties</b>           | 73,414 | 100.0% |
| <b>Hennepin County, MN</b>    | 29,777 | 40.6%  |
| <b>Scott County, MN</b>       | 17,935 | 24.4%  |
| <b>Dakota County, MN</b>      | 11,055 | 15.1%  |
| <b>Ramsey County, MN</b>      | 3,793  | 5.2%   |
| <b>Carver County, MN</b>      | 3,428  | 4.7%   |
| <b>Anoka County, MN</b>       | 1,050  | 1.4%   |
| <b>Le Sueur County, MN</b>    | 806    | 1.1%   |
| <b>St. Louis County, MN</b>   | 449    | 0.6%   |
| <b>Rice County, MN</b>        | 432    | 0.6%   |
| <b>Blue Earth County, MN</b>  | 416    | 0.6%   |
| <b>Washington County, MN</b>  | 369    | 0.5%   |
| <b>Olmsted County, MN</b>     | 279    | 0.4%   |
| <b>Wright County, MN</b>      | 264    | 0.4%   |
| <b>McLeod County, MN</b>      | 241    | 0.3%   |
| <b>Stearns County, MN</b>     | 213    | 0.3%   |
| <b>Brown County, MN</b>       | 206    | 0.3%   |
| <b>Nicollet County, MN</b>    | 150    | 0.2%   |
| <b>Steele County, MN</b>      | 147    | 0.2%   |
| <b>Sibley County, MN</b>      | 143    | 0.2%   |
| <b>Winona County, MN</b>      | 103    | 0.1%   |
| <b>Sherburne County, MN</b>   | 98     | 0.1%   |
| <b>Becker County, MN</b>      | 94     | 0.1%   |
| <b>Lyon County, MN</b>        | 91     | 0.1%   |
| <b>Cook County, IL</b>        | 77     | 0.1%   |
| <b>Cass County, ND</b>        | 77     | 0.1%   |
| <b>Goodhue County, MN</b>     | 72     | 0.1%   |
| <b>Benton County, MN</b>      | 61     | 0.1%   |
| <b>Douglas County, MN</b>     | 53     | 0.1%   |
| <b>Crow Wing County, MN</b>   | 47     | 0.1%   |
| <b>Fau Claire County, WI</b>  | 46     | 0.1%   |
| <b>Kandiyohi County, MN</b>   | 39     | 0.1%   |
| <b>Waseca County, MN</b>      | 38     | 0.1%   |
| <b>Watsonwan County, MN</b>   | 38     | 0.1%   |
| <b>La Crosse County, WI</b>   | 35     | 0.0%   |
| <b>Otter Tail County, MN</b>  | 34     | 0.0%   |
| <b>St. Croix County, WI</b>   | 33     | 0.0%   |
| <b>Roseau County, MN</b>      | 30     | 0.0%   |
| <b>Renville County, MN</b>    | 29     | 0.0%   |
| <b>Carlton County, MN</b>     | 28     | 0.0%   |
| <b>Minnehaha County, SD</b>   | 26     | 0.0%   |
| <b>Grand Forks County, ND</b> | 25     | 0.0%   |
| <b>Dane County, WI</b>        | 25     | 0.0%   |
| <b>Beltrami County, MN</b>    | 24     | 0.0%   |
| <b>Morrison County, MN</b>    | 24     | 0.0%   |
| <b>Wabasha County, MN</b>     | 24     | 0.0%   |
| <b>Clay County, MN</b>        | 23     | 0.0%   |
| <b>Isanti County, MN</b>      | 22     | 0.0%   |
| <b>Story County, IA</b>       | 21     | 0.0%   |
| <b>Freeborn County, MN</b>    | 19     | 0.0%   |
| <b>Aitkin County, MN</b>      | 18     | 0.0%   |

# Scott County Inflow/Outflow

- ▶ Shakopee (9.8%)
- ▶ Minneapolis (8.5%)
- ▶ Bloomington (8.3%)
- ▶ Burnsville (6.3%)
- ▶ Eden Prairie (5.8%)
- ▶ Prior Lake (5.4%)
- ▶ Savage (3.4%)
- ▶ St. Paul (3.3%)
- ▶ Edina (3.2%)
- ▶ Minnetonka (3.2%)
- ▶ Shakopee (13.1%)
- ▶ Prior Lake (7.9%)
- ▶ Savage (6.1%)
- ▶ Burnsville (4.7%)
- ▶ Belle Plaine (3.7%)
- ▶ Lakeville (3.1%)
- ▶ Jordan (2.9%)
- ▶ Bloomington (2.9%)
- ▶ New Prague (2.8%)
- ▶ Minneapolis (2.8%)

Top Work Destinations for  
Scott County Residents  
(Est. 73,400 in 2014)

Where those Employed in  
Scott County Come From  
(Est. 40,400 in 2014)

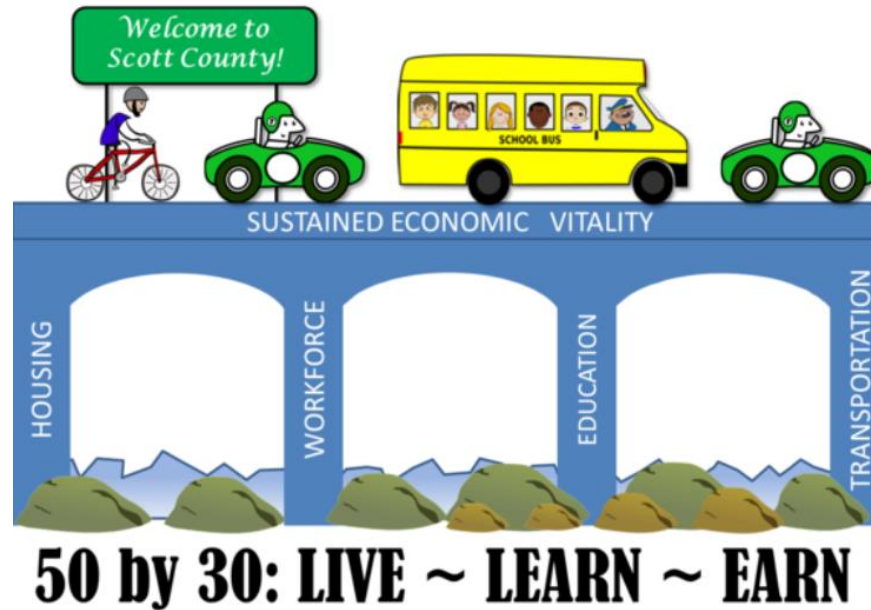
# Discussion

- ▶ What does the data say to you?
- ▶ What surprised you about the data?
- ▶ What don't we know?



# 50 by 30

## Live, Learn, Earn



Educational Preparedness Data Story

# Vision Statement

- ▶ Ensure children are developmentally on track and prepared for educational success.



# Big Questions

- Is preparing children for a successful life a community issue? – Who is responsible?
- What are the primary barriers to educational success?
- What kinds of supports do families of young children need?
- What programs or experiences are currently working well for young children (birth–age 8) and families in our communities?
- What challenges do we face in meeting the needs of young children (birth–age 8)?



# Current Status of Early Childhood Education in Scott County

- As of July 2015, Scott County had an estimated population of 141,660 people. Of the 141,660 people, 28.5% are under age 18 and 7.2% are under age 5 (US Census Bureau).
- As of 2015, Scott County has a median household income of \$87,794 (US Census Bureau)



# Current Status of Early Childhood Education in Scott County—Child Care Costs

- ▶ Childcare costs in Scott County vs income (Child Care Aware):

## Cost of Child Care

Center-based Child Care · Home-based Child Care

 \$ 20,862

 \$ 10,497

Annual Cost of Child Care

 \$ 36,411

 \$ 9,550

Annual Cost of Child Care for an Infant and a 4-year-old

Infant Cost in Center

\$ 20,862

vs.

Public College Tuition

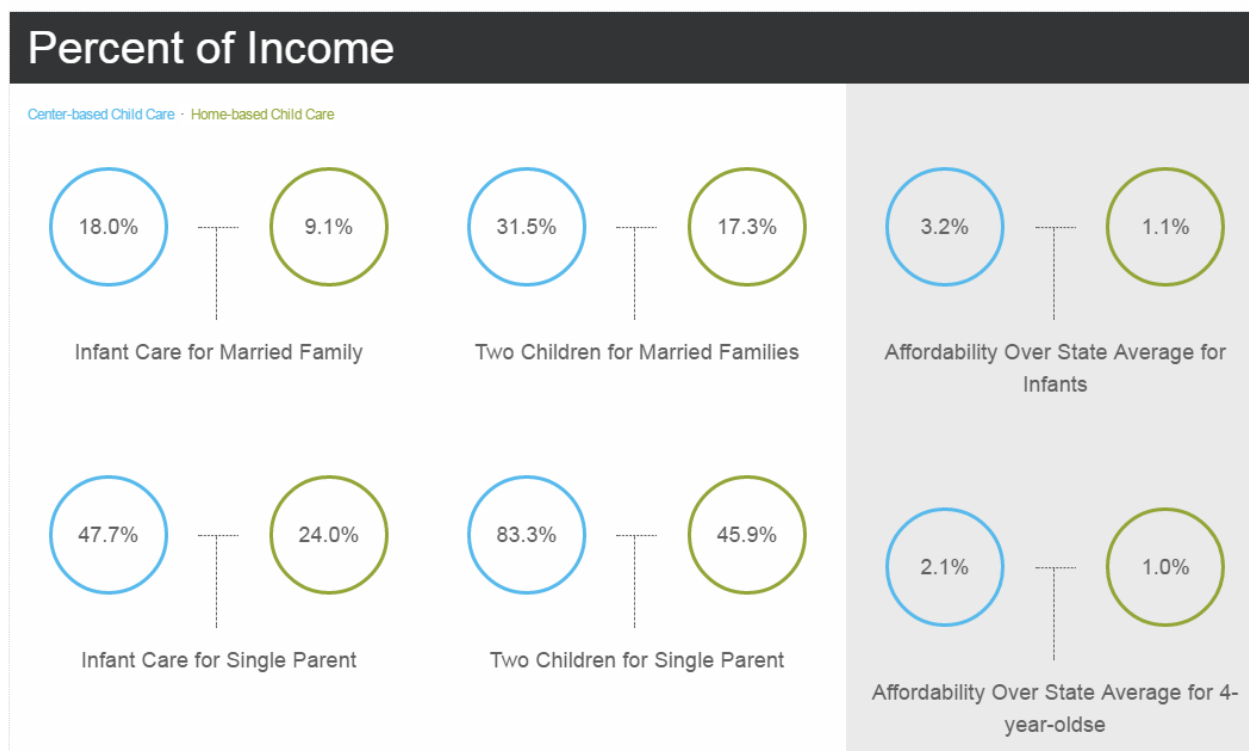
\$10,831



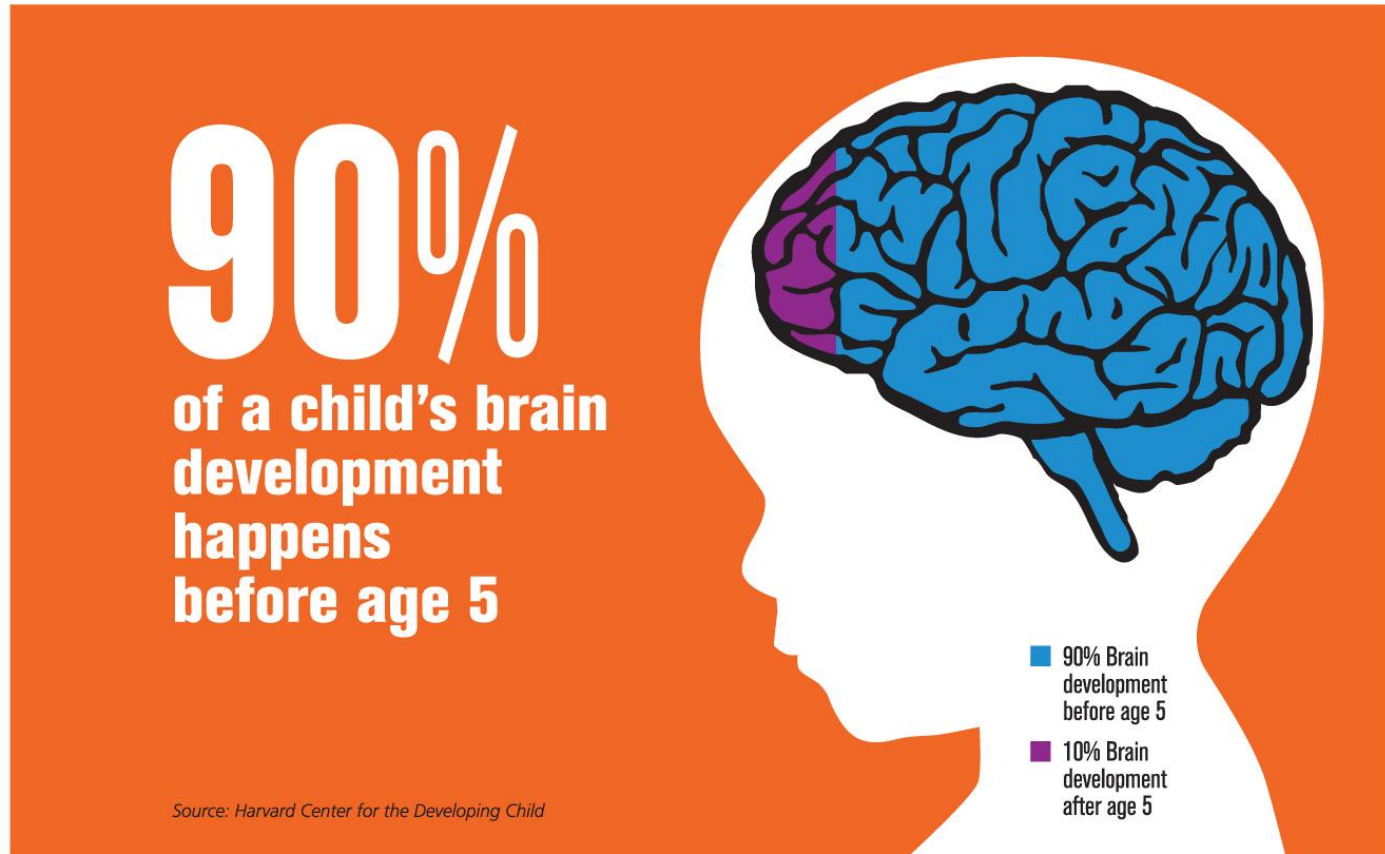


# Current Status of Early Childhood Education in Scott County—Child Care Costs Continued

## Childcare costs in Scott County as a percentage of income (Child Care Aware):

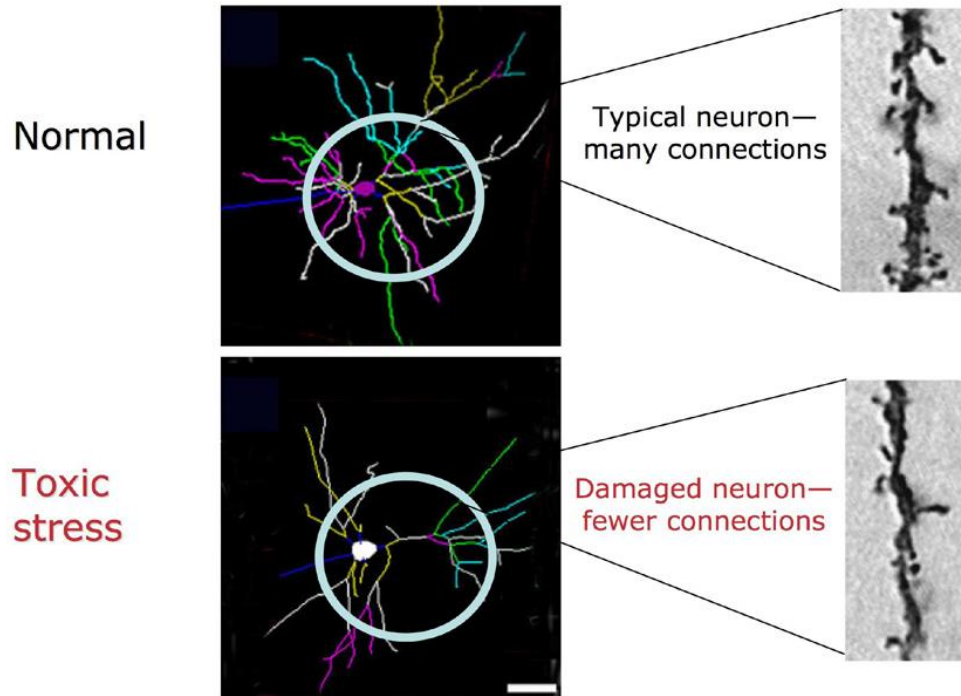


# Current Status of Early Childhood Education in Scott County--Continued



# Current Status of Early Childhood Education in Scott County--Continued

## Persistent Stress Changes Brain Architecture



Prefrontal Cortex and Hippocampus

Sources: Radley et al. (2004)  
Bock et al. (2005)



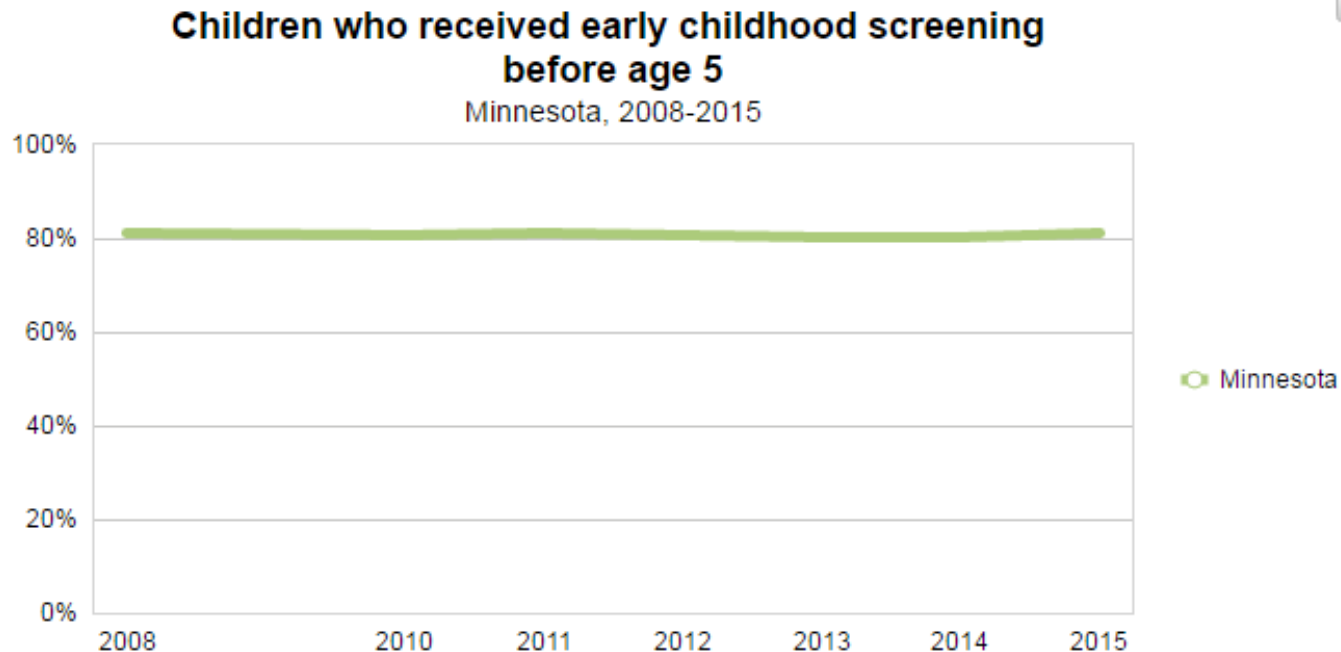
# Current Status of Early Childhood Education in Scott County--Continued

- Research shows a strong correlation between being ready for kindergarten and reading at grade level in third grade. Reading at grade level in third grade is also a strong predictor of future success (St. Paul Kids).



# Current Status of Early Childhood Education in Scott County--Continued

- 80.6% of Scott County children are screened before age 5. State average is 81.1% (MN Compass).

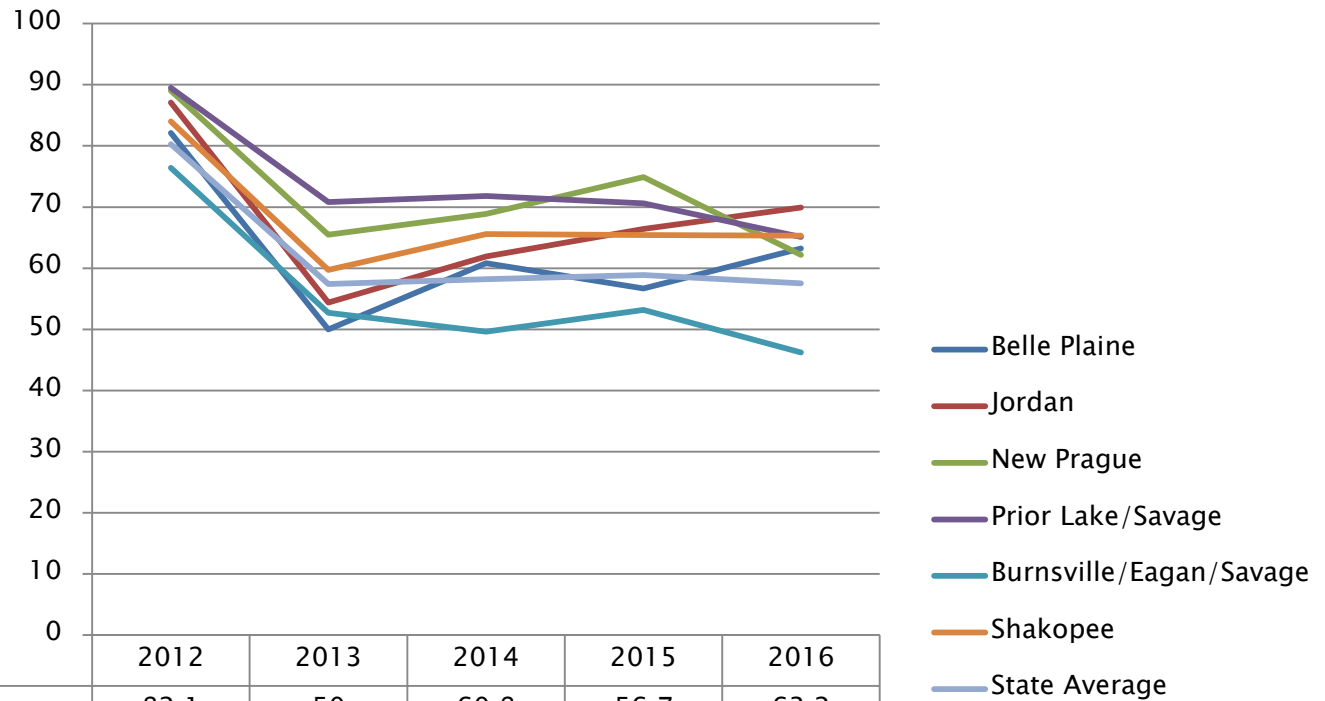


# Current Status of Early Childhood Education in Scott County--Continued

- Scott County has six school districts (MN Dept. of Education).
  - In 2016, 62.6% of Scott County third graders were reading at grade level (MN Compass) compared to 57.5% of Minnesota third graders state wide.
  - ▶ For Scott County school districts, proficiency is:
    - Shakopee: 65.3 %
    - Burnsville–Eagan–Savage: 46.2%
    - Prior Lake–Savage: 65.1 %
    - Jordan: 69.9 %
    - Belle Plaine: 63.2%
    - New Prague: 62.2%
- (MN Dept. of Education)



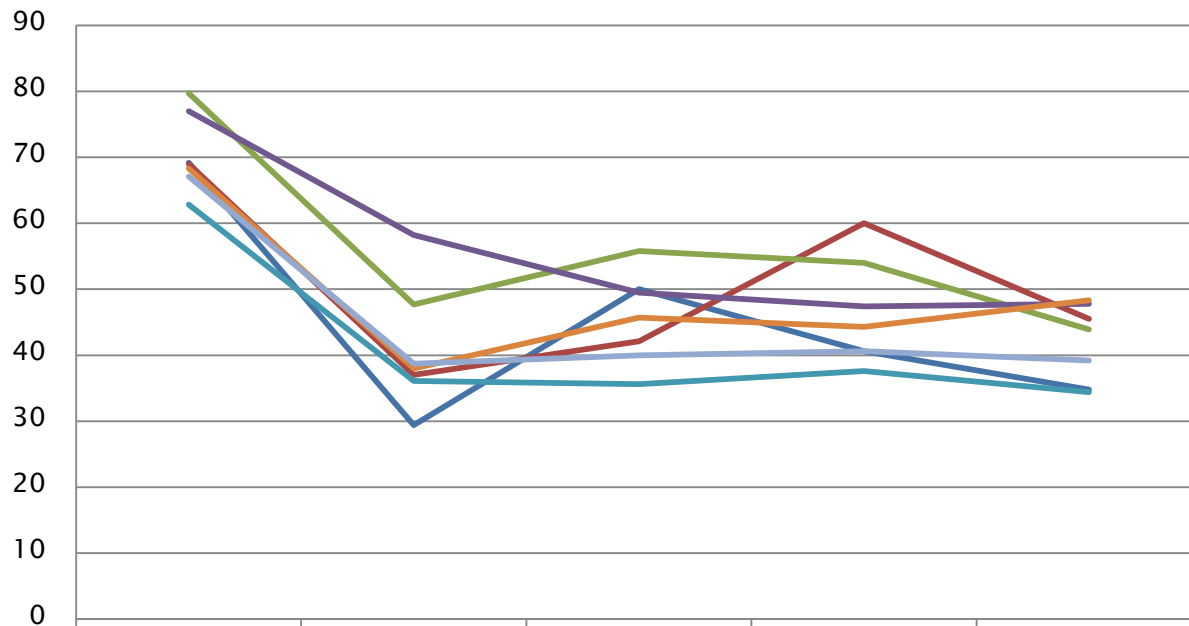
# % of 3rd Graders Proficiently Reading at Grade Level



|                         | 2012 | 2013 | 2014 | 2015 | 2016 |
|-------------------------|------|------|------|------|------|
| Belle Plaine            | 82.1 | 50   | 60.8 | 56.7 | 63.2 |
| Jordan                  | 87.1 | 54.4 | 61.9 | 66.4 | 69.9 |
| New Prague              | 89   | 65.5 | 68.9 | 74.9 | 62.2 |
| Prior Lake/Savage       | 89.5 | 70.8 | 71.8 | 70.6 | 65.1 |
| Burnsville/Eagan/Savage | 76.4 | 52.7 | 49.6 | 53.2 | 46.2 |
| Shakopee                | 84   | 59.7 | 65.6 | 65.4 | 65.3 |
| State Average           | 80.3 | 57.4 | 58.2 | 58.9 | 57.5 |



# % of 3rd Graders Reading Proficiently--Free and Reduced Lunch

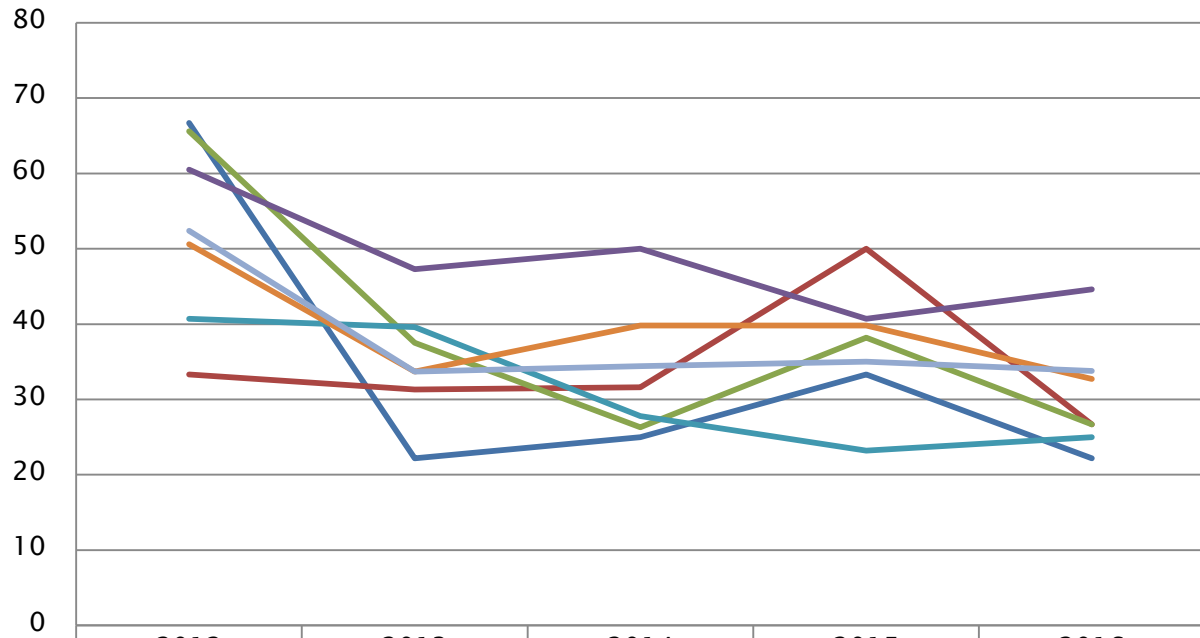


|                         | 2012 | 2013 | 2014 | 2015 | 2016 |
|-------------------------|------|------|------|------|------|
| Belle Plaine            | 69.2 | 29.4 | 50   | 40.6 | 34.8 |
| Jordan                  | 69   | 37   | 42.1 | 60   | 45.5 |
| New Prague              | 79.7 | 47.7 | 55.8 | 54   | 43.9 |
| Prior Lake/Savage       | 77   | 58.2 | 49.5 | 47.4 | 47.8 |
| Burnsville/Eagan/Savage | 62.8 | 36.1 | 35.6 | 37.6 | 34.4 |
| Shakopee                | 68.3 | 38   | 45.7 | 44.3 | 48.3 |
| State Average           | 67.1 | 38.7 | 40   | 40.6 | 39.2 |





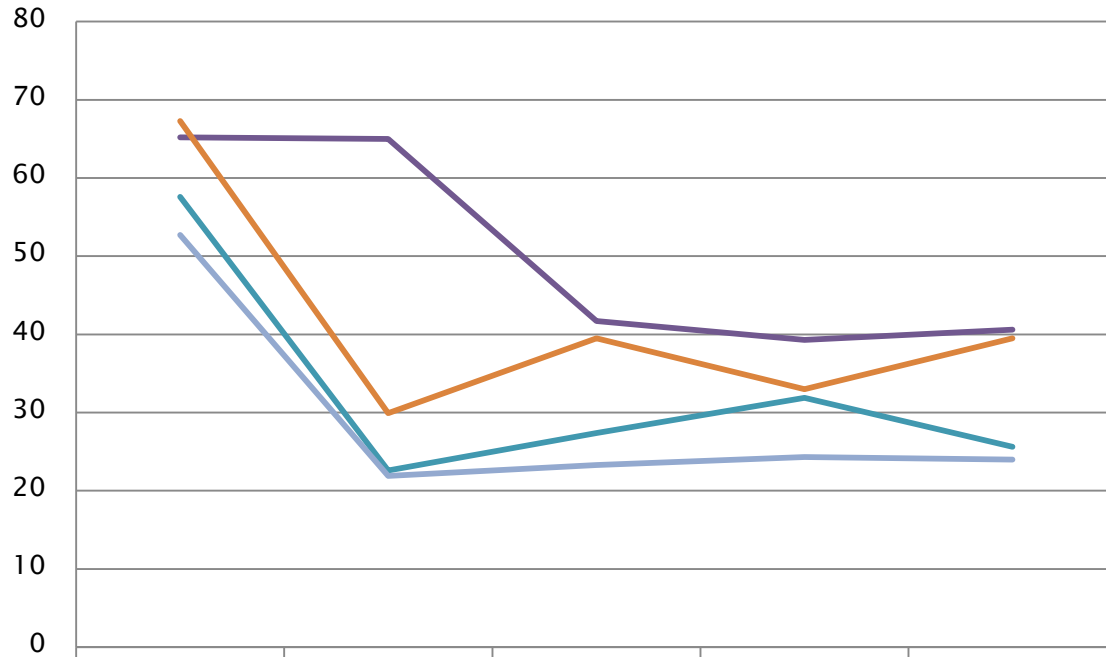
# % of 3rd Graders Reading Proficiently--Special Education



|                           | 2012 | 2013 | 2014 | 2015 | 2016 |
|---------------------------|------|------|------|------|------|
| — Belle Plaine            | 66.7 | 22.2 | 25   | 33.3 | 22.2 |
| — Jordan                  | 33.3 | 31.3 | 31.6 | 50   | 26.7 |
| — New Prague              | 65.6 | 37.5 | 26.3 | 38.2 | 26.7 |
| — Prior Lake/Savage       | 60.5 | 47.3 | 50   | 40.7 | 44.6 |
| — Burnsville/Eagan/Savage | 40.7 | 39.6 | 27.8 | 23.2 | 25   |
| — Shakopee                | 50.6 | 33.7 | 39.8 | 39.8 | 32.7 |
| — State Average           | 52.4 | 33.7 | 34.4 | 35   | 33.8 |



# % of 3rd Graders Reading Proficient--ESL



|                         | 2012 | 2013 | 2014 | 2015 | 2016 |
|-------------------------|------|------|------|------|------|
| Belle Plaine            | 0    |      |      |      |      |
| Jordan                  | 0    |      |      |      |      |
| New Prague              | 0    |      |      |      |      |
| Prior Lake/Savage       | 65.2 | 65   | 41.7 | 39.3 | 40.6 |
| Burnsville/Eagan/Savage | 57.6 | 22.6 | 27.4 | 31.9 | 25.6 |
| Shakopee                | 67.3 | 29.9 | 39.5 | 33   | 39.5 |
| State Average           | 52.7 | 21.9 | 23.3 | 24.3 | 24   |



# Sources Used

- ▶ Brain Development Image: Harvard Center for the Developing Child
- ▶ Child Care Aware  
<http://usa.childcareaware.org/advocacy-public-policy/resources/reports-and-research/costofcare/>
- ▶ Image Brain: <http://46y5eh11fhgw3ve3ytpwxt9r.wpengine.netdna-cdn.com/wp-content/uploads/2015/03/InBrief-The-Science-of-Early-Childhood-Development.pdf>
- ▶ Image Kids: [https://static.wixstatic.com/media/bf9945\\_d5b438b7999a4386b6111211aa661593~mv2.jpg](https://static.wixstatic.com/media/bf9945_d5b438b7999a4386b6111211aa661593~mv2.jpg)
- ▶ MN Compass: <http://www.mncompass.org/profiles/county/scott> and  
<http://www.mncompass.org/children-and-youth/early-childhood-screening#1-5982-g>
- ▶ MN Dept. of Education: <http://w20.education.state.mn.us/MDEAnalytics/Maps.jsp>
- ▶ MN Dept. of Education Report Card: <http://rc.education.state.mn.us/#>
- ▶ St Paul Kids: [http://www.saintpaulkids.org/vertical/sites/%7BEB10C188-5C92-4990-BE75-21C570FEDF8F%7D/uploads/Goal\\_Two\\_-\\_Reading\\_by\\_Third\\_Grade.pdf](http://www.saintpaulkids.org/vertical/sites/%7BEB10C188-5C92-4990-BE75-21C570FEDF8F%7D/uploads/Goal_Two_-_Reading_by_Third_Grade.pdf)
- ▶ US Census Bureau: <http://www.census.gov/quickfacts/table/AGE135215/27139>

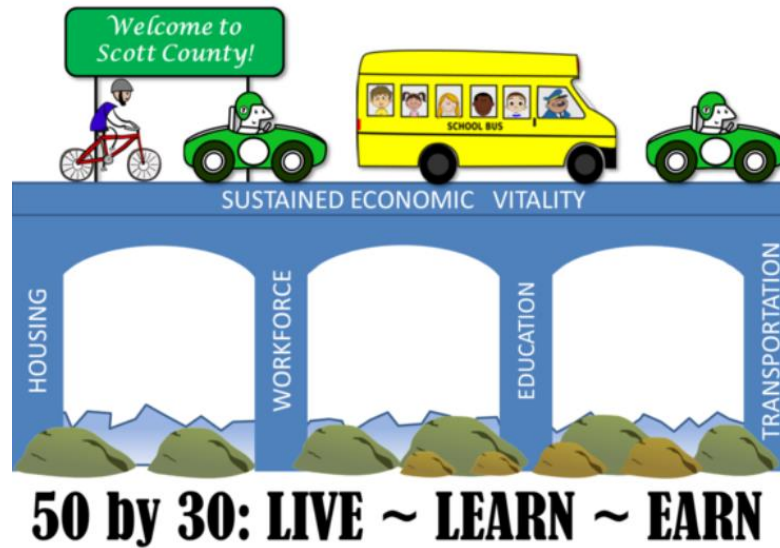


# Discussion

- ▶ What does the data say to you?
- ▶ What surprised you about the data?
- ▶ What don't we know?



# 50 by 30 Live, Learn, Earn



## Transportation Data Story

# Vision Statement

Ensure access to safe, reliable & affordable transportation options that connect people to jobs, goods & services.



# Big Questions

- Do all residents have mobility options?
- Can all residents travel safely?
- Can businesses move employees and freight efficiently and safely?



# Current Status of Transportation in Scott County

- Scott County is on the outer ring of the Minneapolis–St. Paul Metro Area.
- The Metropolitan Council classifies the northern cities of Scott County as Suburban (Savage), Suburban Edge (Shakopee), and Emerging Suburban Edge (Prior Lake) communities.
- Jordan, Belle Plaine, and Elko New Market are designated as Rural Centers



## Community Designations

### Urban Service Areas

- Urban Center
- Urban
- Suburban
- Suburban Edge
- Emerging Suburban Edge

### Rural Service Areas

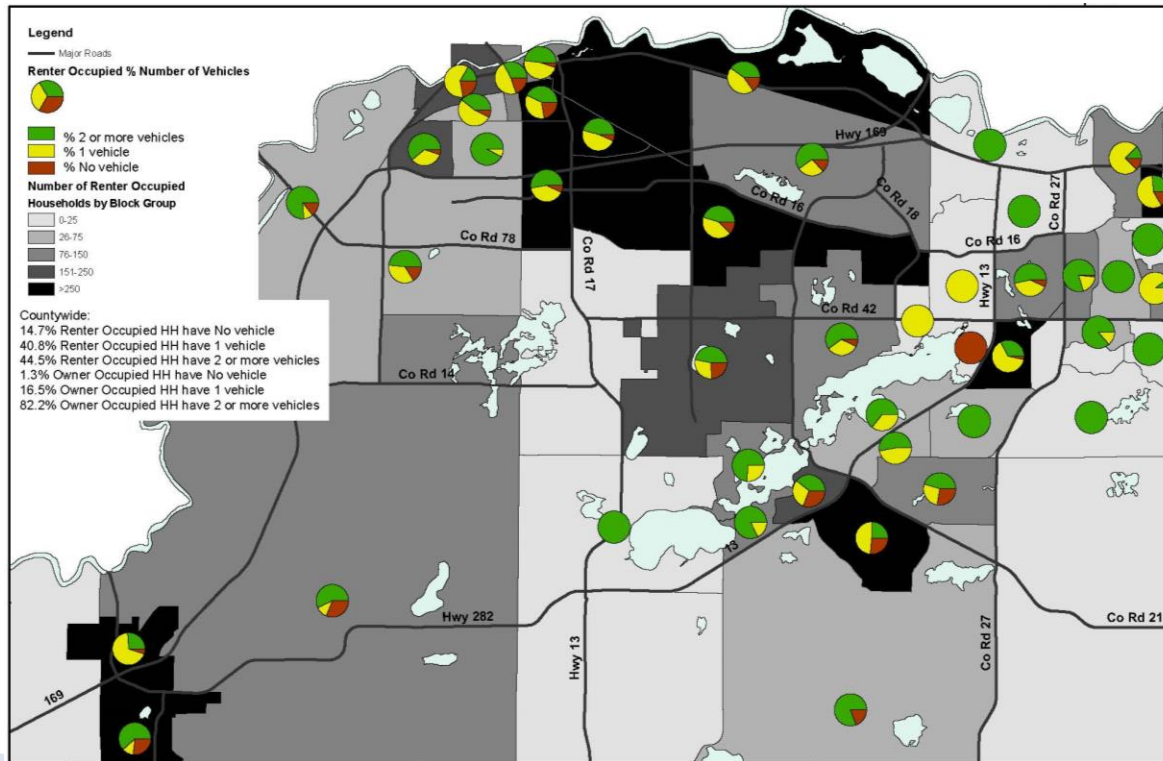
- Rural Center
- Diversified Rural
- Rural Residential
- Agricultural





# Current Status of Transportation in Scott County

- 1 in 7 Renter Occupied Households do not own a vehicle.
- More than 1 in 6 Owner Occupied Households own 1 vehicle or less.

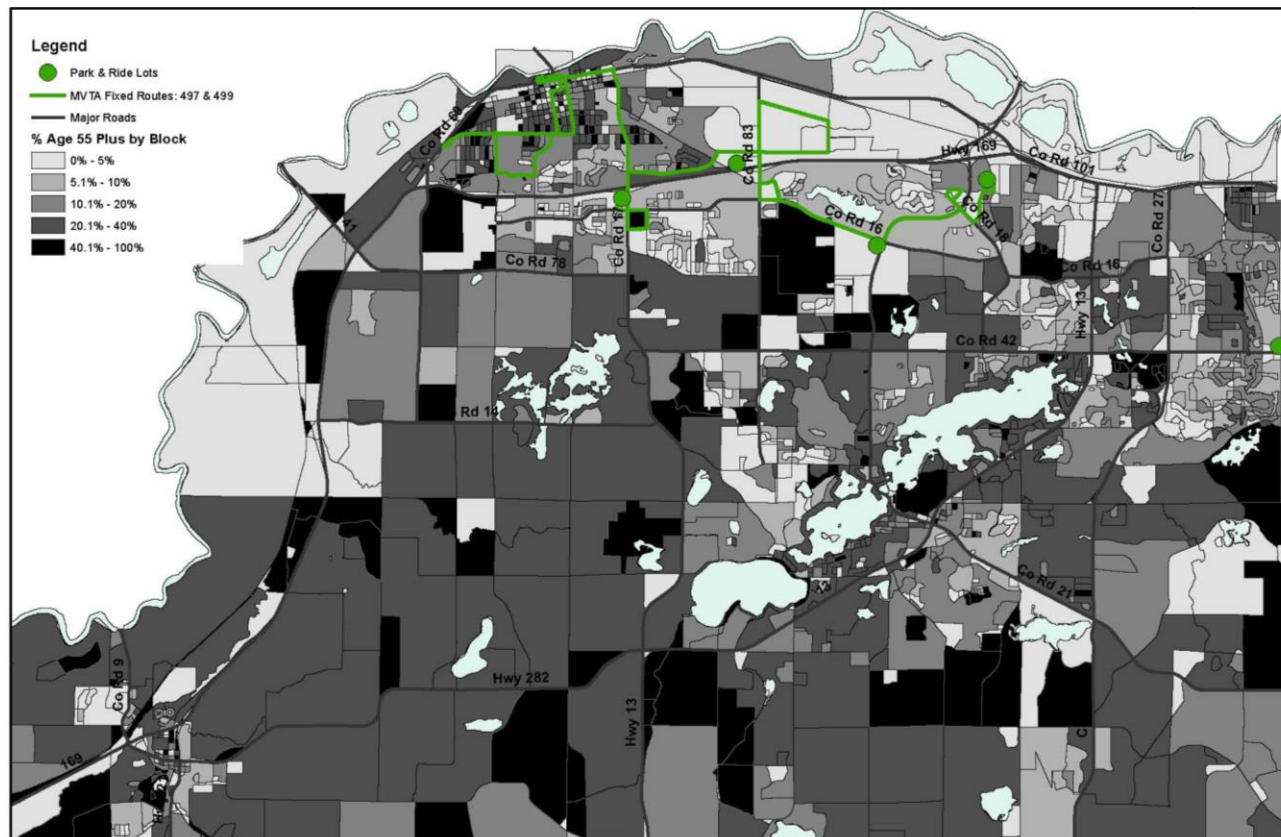


# Current Status of Transportation in Scott County

- In 2015, 26.8% of resident were 55 or older. This percentage continues to grow.

- The darkest areas have 40 percent or more of the population 55 and above.

- Countywide the percentage of Census Blocks with 40 percent or more of the population over age 55 is 10.6 percent.



# Current Status of Transportation in Scott County

- The average housing unit density for Census Blocks within a ¼ mile buffer of MVTA fixed routes 497 and 499 is 3.2 units per acre.
- In Shakopee, a Suburban Edge community, this is 11.8 housing units per acre below the regional benchmark for fixed route service of 15.
- Less than 1 percent (0.65%) of Census Blocks in the county have a housing density of 15 units per acre or more.





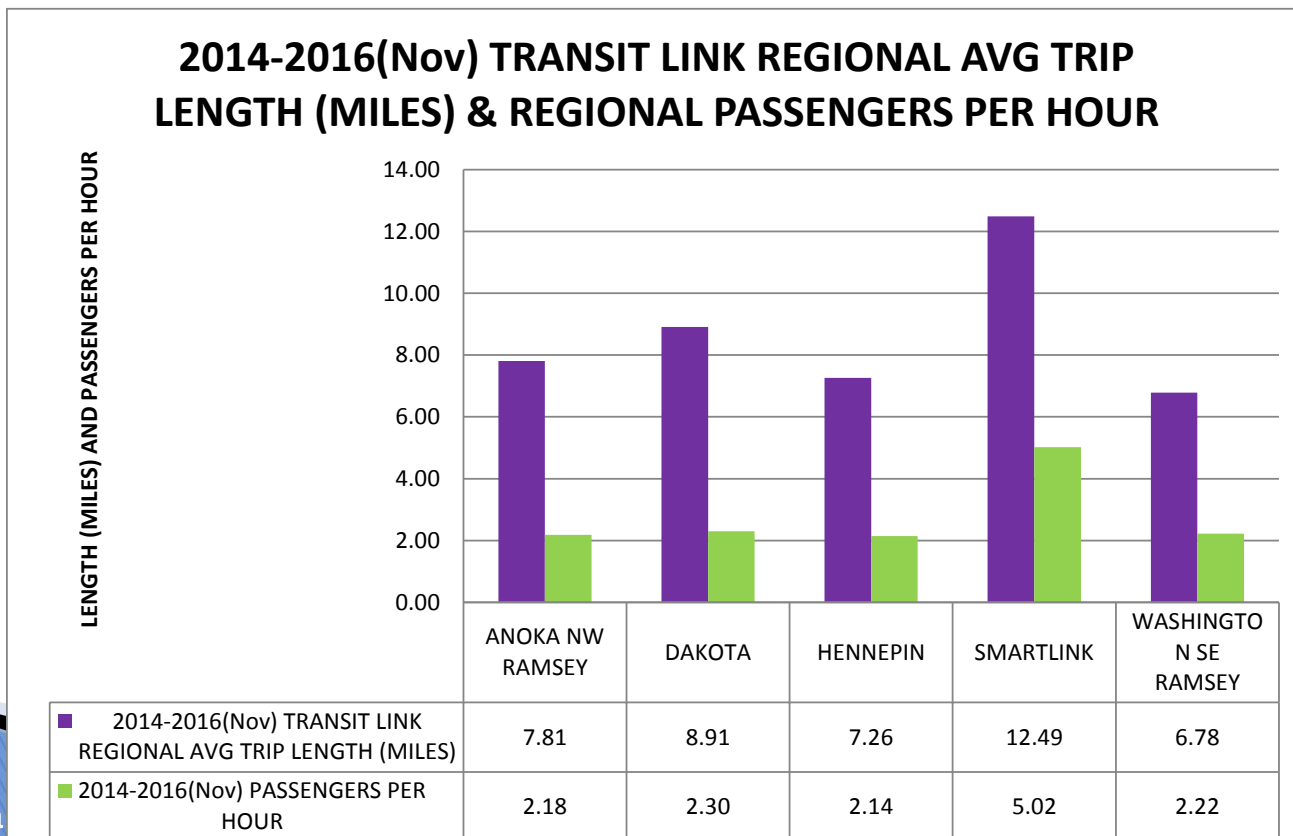
# Big Question 1: Do all residents have mobility options?

- ▶ Transit needs are primarily provided by the Minnesota Valley Transit Authority (MVTA) and the County's SmartLink program.
  - MVTA Provides fixed route and flex route bus service to Shakopee, Prior Lake, and Savage.
  - SmartLink Transit provides Dial-A-Ride services, Medical Assistance trips, and coordinates the Volunteer Driver program throughout the County.



# Big Question 1: Do all residents have mobility options?

- SmartLink is an efficient and highly used program. In 2015, Dial-A-Ride provided trips for 117,706 passengers, which is 41,077 more passengers than the closest provider in the metro area.
- Dial-a-Ride trips in Scott County, on average, are longer (12.49 miles) than those in other parts of the metro, but also handle more passengers per hour (5.02 passengers) than other metro providers.

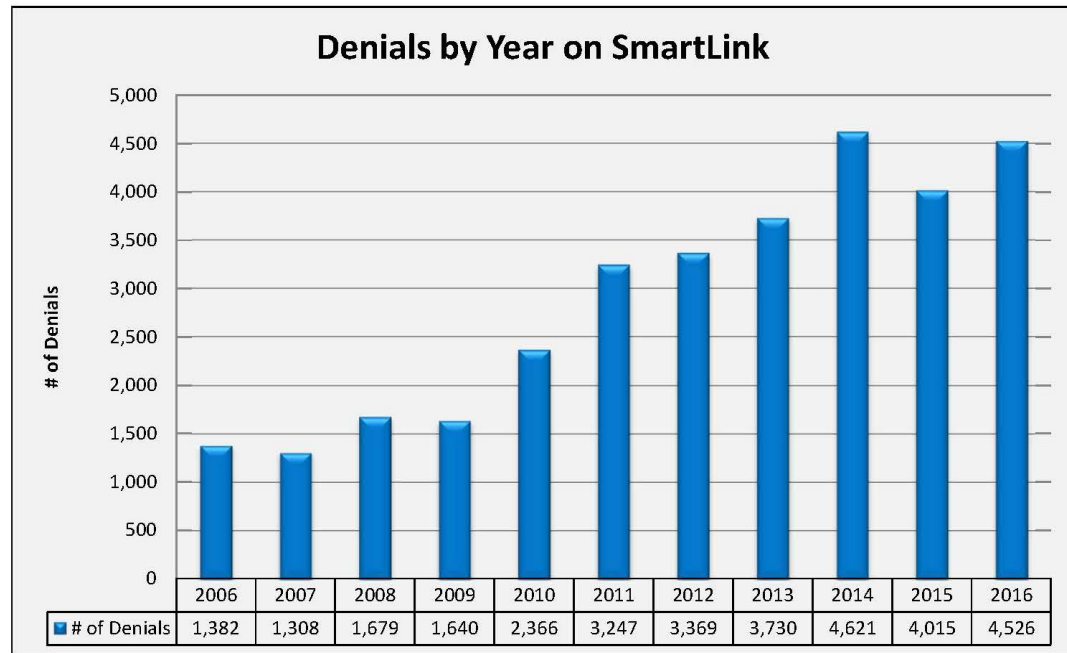


# Big Question 1: Do all residents have mobility options?

- ▶ The number of denials by year on SmartLink Dial-a-Ride service is increasing

## About this measure:

This measure shows denials by year on the SmartLink (Dial-A-Ride) service for the period 2006 through 2016. At this time, the operational period for SmartLink is Monday-Friday from 6AM-7PM.

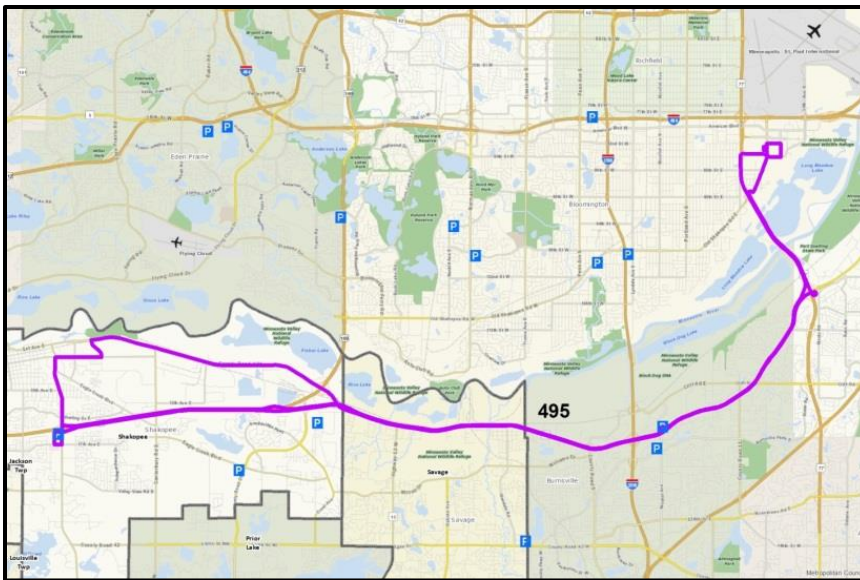


Source: Trapeze



# Big Question 1: Do all residents have mobility options?

- MVTA operates park and rides along the more heavily used routes. Passengers can flag down buses, or some routes are designated as “flex”, where the driver can deviate from the route to pick a passenger.
- In August, the MVTA started a new route (495) between Shakopee and the Mall of America, which is growing in passenger numbers.



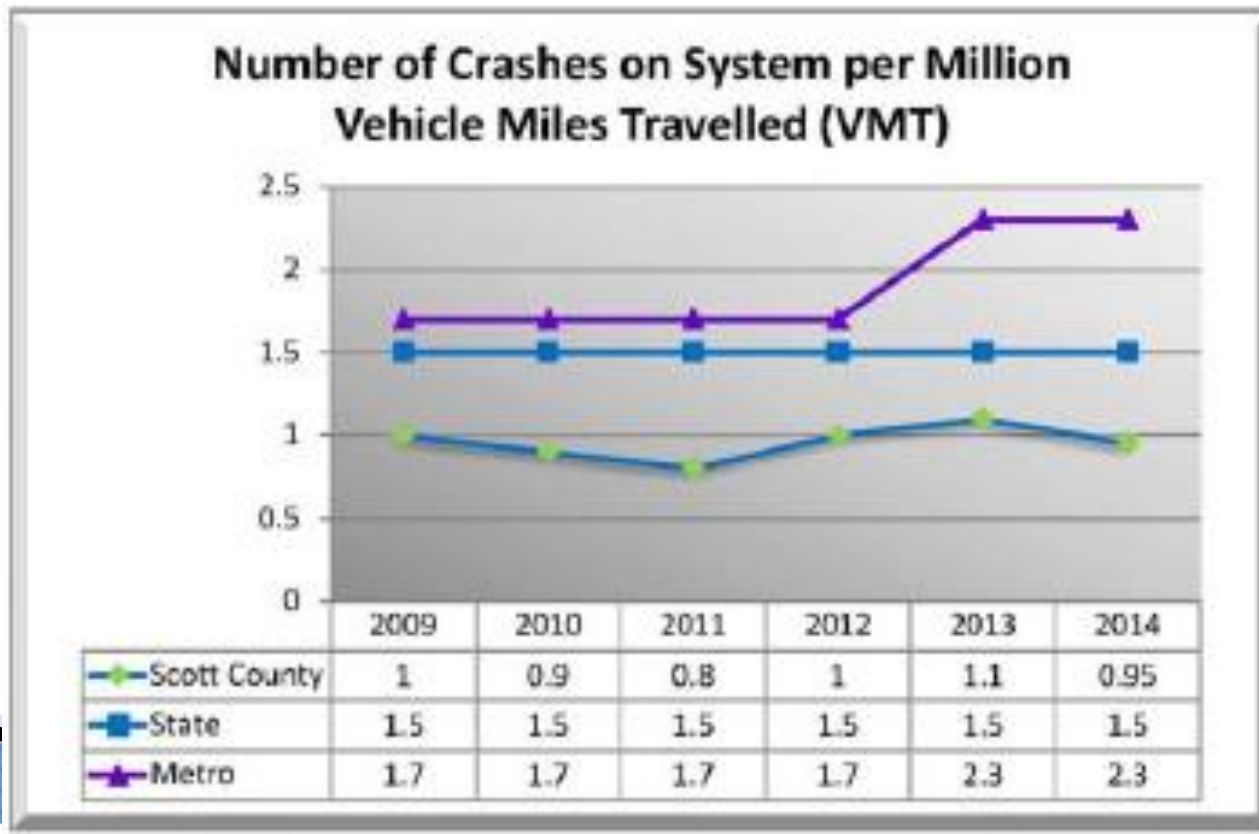
- MVTA is active in planning and promoting its routes and working with businesses.
- In December, Mystic Lake began providing a discounted transit pass to its employees to use MVTA’s services.
- There are other transit providers that operate in and around Scott County that have an interest in increasing mobility.





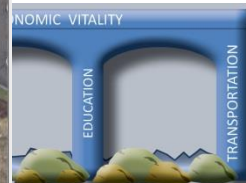
# Big Question 2: Can residents travel safely?

- ▶ Crashes on County Highways have remained constant over the past 6 years with about 1 crash or less per million vehicle miles traveled (MVMT). This is below the metro average.
- ▶ SmartLink's Miles Driven per Accident is 10 times lower than the regional safety bench mark.



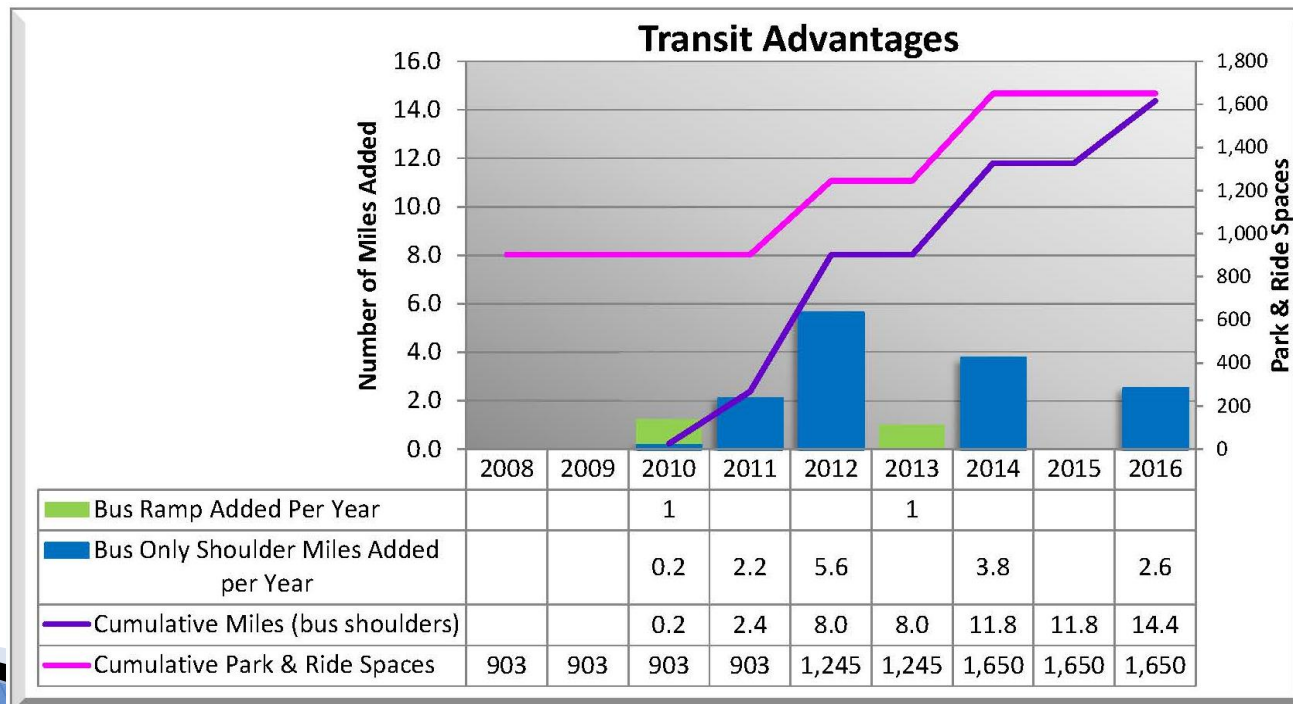
# Big Question 2: Can residents travel safely?

- ▶ There are developments in Scott County that are not pedestrian friendly. This makes it hard for transit users to safely get to their destination. A commercial development may have sidewalk going by it, but there is no internal pedestrian access. This problem is compounded in the winter. To what extent these are issues or where they are located is not known at this point.

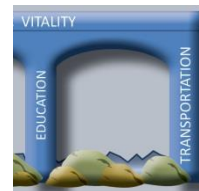


# Big Question 3: Can employers move employees and freight efficiently and safely?

- ▶ **Regional Transit Advantages infrastructure is developing in Scott County**
  - Bus only shoulders and bus ramps allow transit passengers to bypass congestion. Bus only shoulders were first implemented in 2010 and now exceed 14 miles. Two bus ramps were added over this time period. Park & Ride parking spaces also grew from approximately 900 spaces to 1,650 spaces.

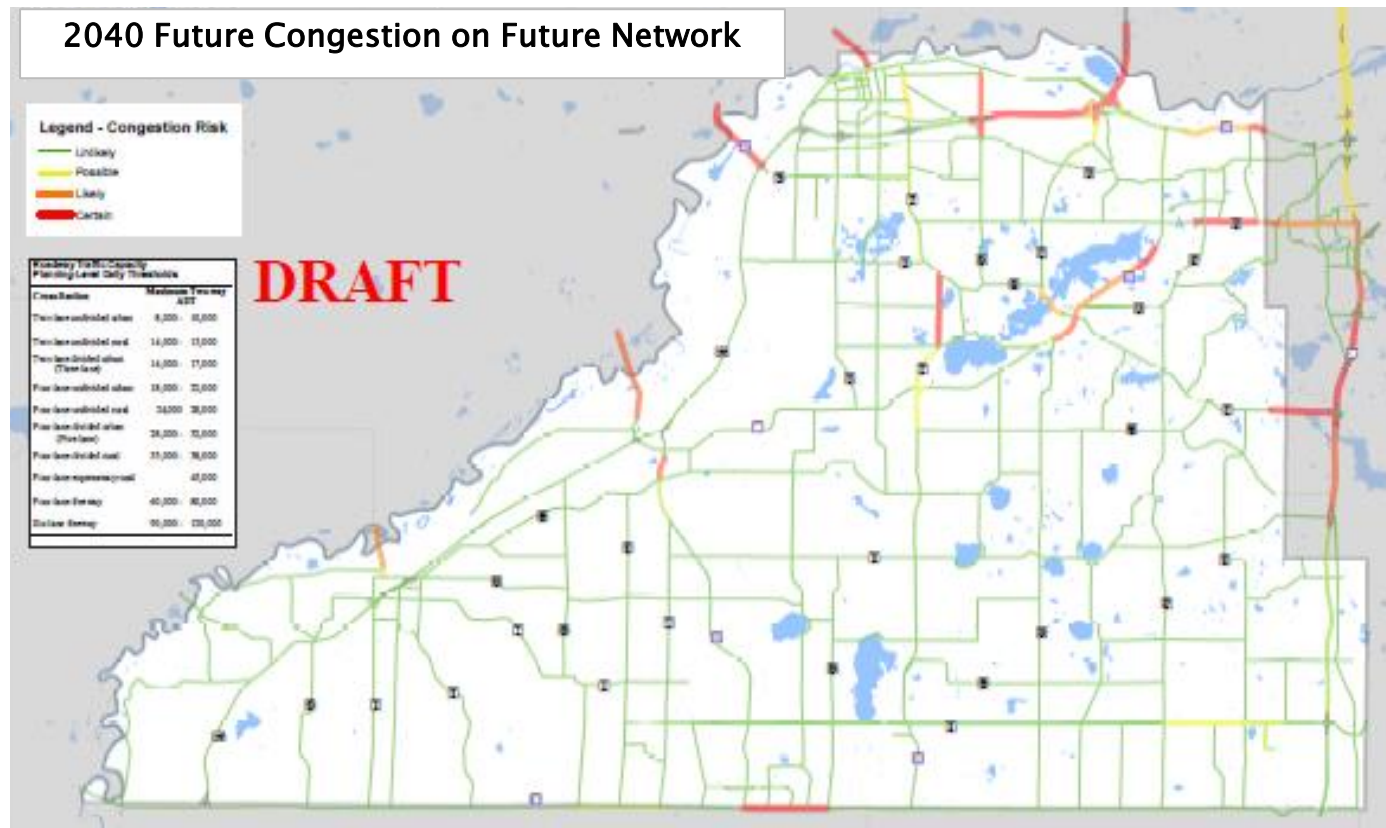


Source: Scott County Highway Department, MnDOT Bus Shoulder Database



# Big Question 3: Can employers move employees and freight efficiently and safely?

- Despite investments into Scott County's roads, river crossings are projected to be at and over capacity in 2040.



ED ECONOMIC VITALITY



# Discussion

- ▶ What does the data say to you?
- ▶ What surprised you about the data?
- ▶ What don't we know?





**Back in 30 minutes**

# Turning the Corner



# Discussion

- ▶ Common themes
  
- ▶ Opportunities for action





