

2021 BC-8 HD SW & DW

BY BCROASTERS.COM

THE BC-8 COMES IN BOTH SINGLE & DOUBLE WALL MODELS. THESE ARE GREAT FOR A COFFEE SHOP, WHOLESALE OR RETAIL COFFEE BUSINESS. THE SINGLE WALL MODEL CAN ROAST FROM 2-8LB. ROASTS. WHILE THE DOUBLE WALL MODEL CAN DO SAMPLES DOWN TO ONE POUND ROASTS. THESE ROASTERS CAN DO UP TO 5 ROASTS PER HOUR. THESE ARE CAPABLE OF ROASTING AROUND 250LB. PER DAY. IT HAS ALL THE FEATURES MOST COMPANIES CHARGE EXTRA FOR BUILT INTO THE BASE PRICE. THE BC-8 MODEL COMES WITH THE ADVANCED AND PRECISE AIRFLOW CONTROL VIA THE MDDS (MANUAL DAMPER) SYSTEM & MANY NEW SAFETY FEATURES. SOLID HEAVY-DUTY STAINLESS STEEL DRUM AND BUILT IN PROFILING SYSTEM FOR BT & ET. DIRECT-CONNECT CHAFF UNIT FOR EFFICIENCY & REDUCED FOOTPRINT. COMES IN LP GAS WITH OPTION TO CONVERT TO NG. NOW IN CHOICE ON SINGLE OR DOUBLE WALL DRUMS! NEW HD MODELS FOR 2021 WHICH INCLUDE A HD CHAFF FAN AND HD GAS GAUGE PLUS OTHER FEATURES



FEATURES

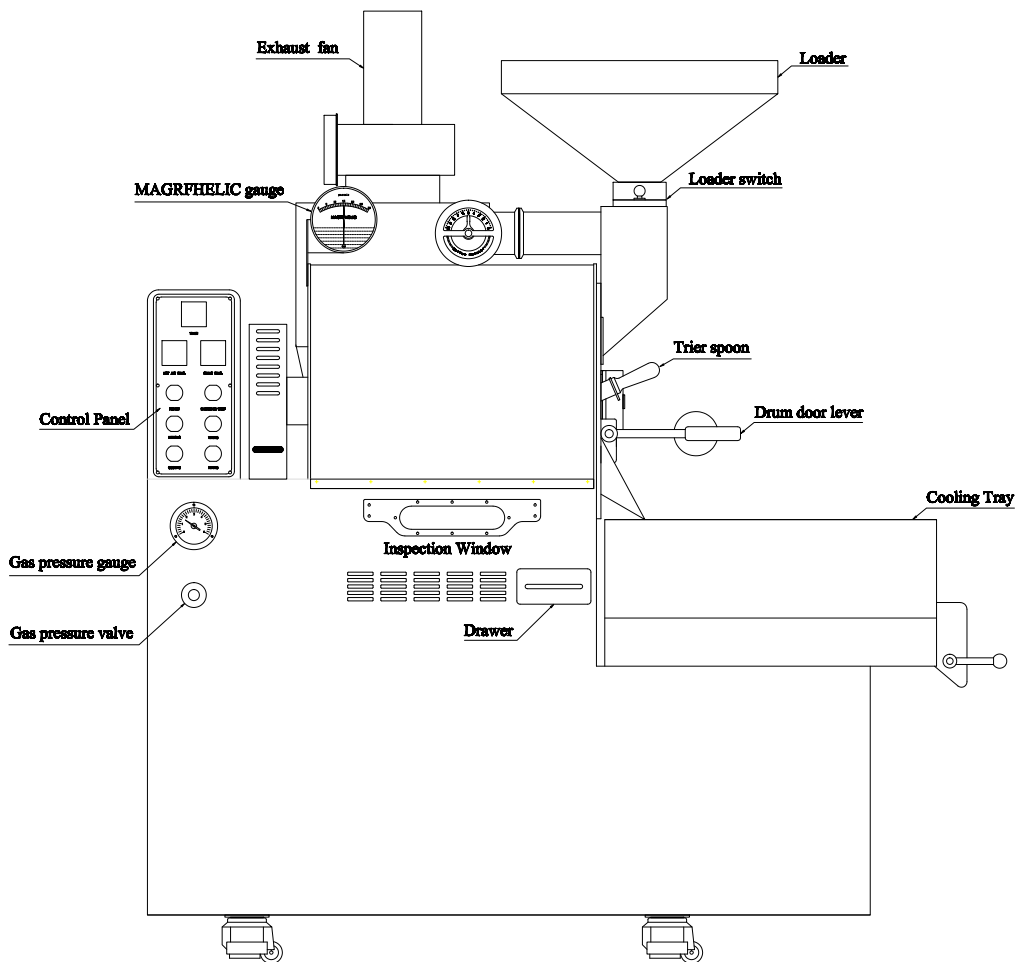
DRUM TYPE
DATA LOGGING
THERMOCOUPLES
CONTROL PANEL
WARRANTY
PARTS AVAILABLE
110V CONVERTER

Single or DW 304SS Drum 5mm
2 OMRON CONTROLS w/BT & ET
K-TYPE for BT & ET
BT & ET VEIW ON PANEL
1 YEAR PARTS & INSTRUCTION
10 Year Parts Available Guarantee
110V Voltage Converter 2000W

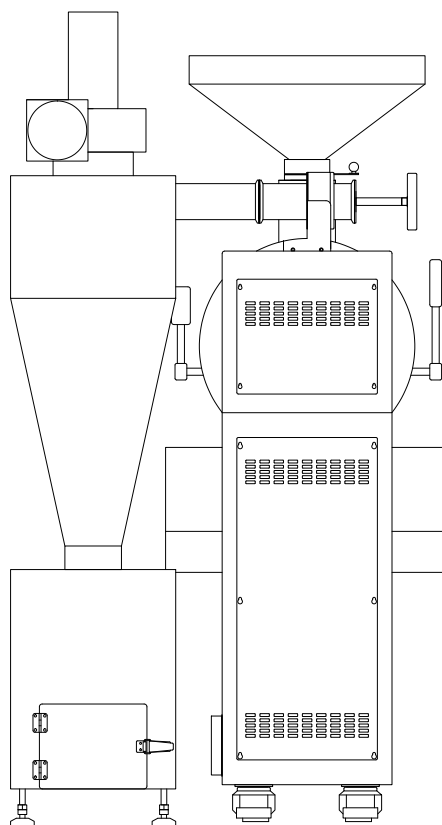
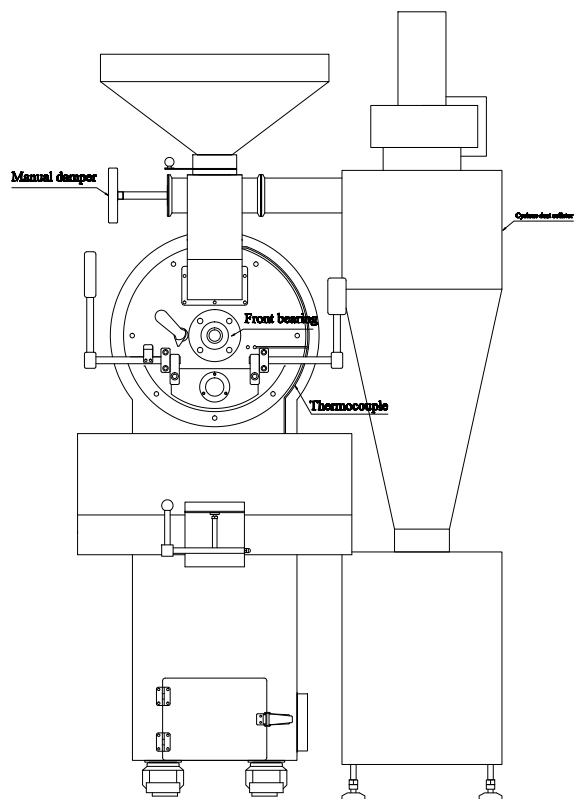
| BC-8MD | GAS TYPE |
|--------------------|--------------------|
| Batch Size | 2-8lb. |
| Roasting Time | 9-14 minutes |
| Production | 32-40lb.hr |
| Heat Source | NG/LPG |
| Voltage | 220V |
| Wattage | 610W |
| Drum Motor | 200W |
| Chaff Fan Motor | 120W |
| Cooling Fan Motor | 200W |
| MIXING ARM | 60W |
| BTU | 60,000 |
| NG PRESSURE | 7-14WC |
| LPG PRESSURE | MAX. 16-20WC |
| Gas Consumption | 0.6kg/hr |
| Roaster Dim. | 52x34x62" |
| Roaster Weight | 628lb. |
| Package Dimensions | 55x46x60 850LB. |

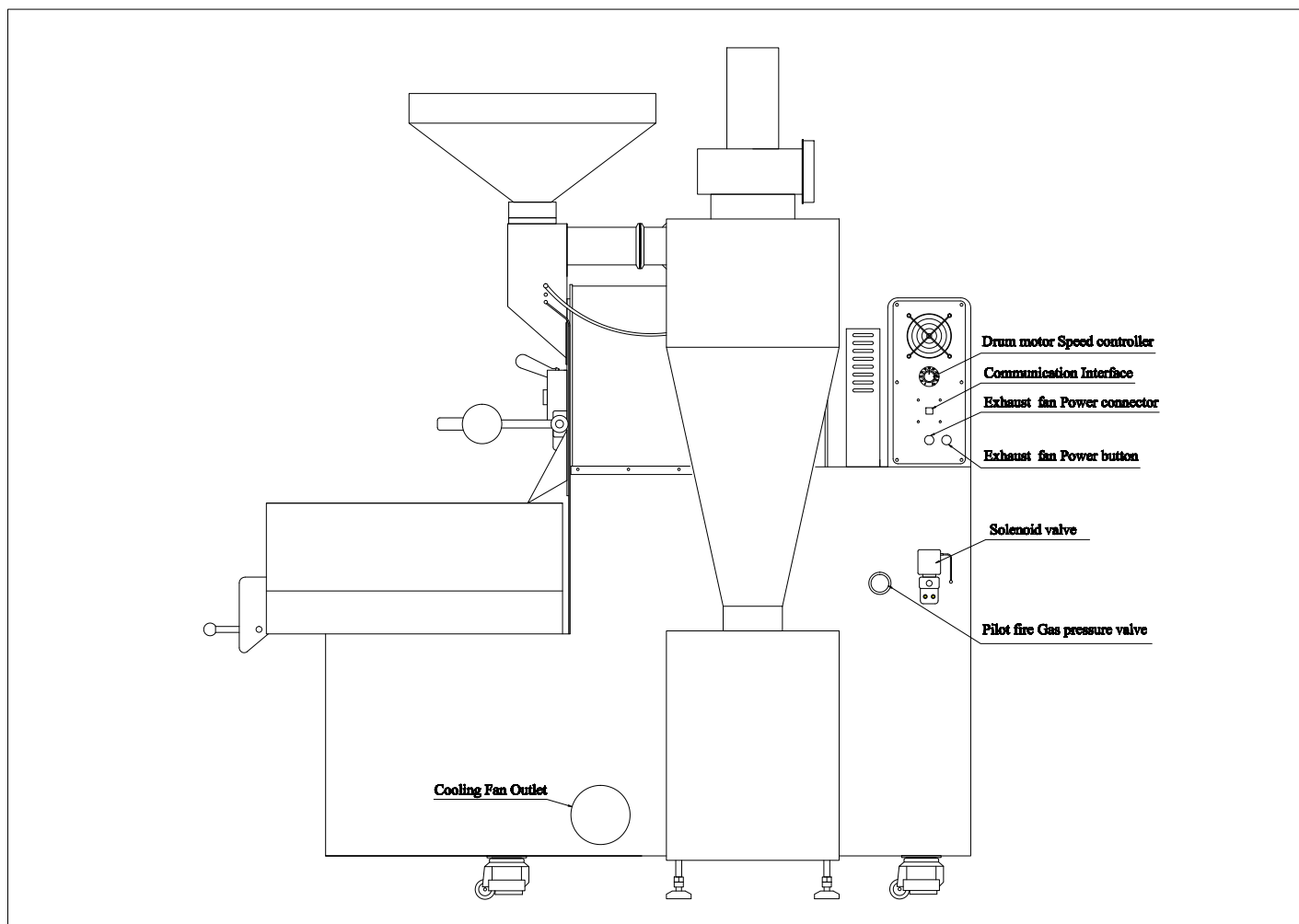
THE BC-8 MD IS A HEAVY DUTY ROASTER BUILT WITH A CARBON STEEL BODY WITH APPROVED POWDER COAT HIGH TEMPERATURE BODY IN BLACK, RED OR WHITE. THE HOUSINGS COME IN A CHOICE OF 4 COLORS (ROSE GOLD, BLACK TITANIUM & STAINLESS) ALSO WE NOW OFFER 3 TEXTURED HOUSINGS WIN GOD CHECKERED, BLACK & SILVER CHECKERED.

TWO EXHAUST PIPES COMES OFF THE
2020 8 ARE 5" EACH AND CAN BE
EXHAUSTED OUT OF BUILDING SEPARATELY OR CONNECTED WITH A BLAST OR
BACKDRAFT DAMPER.



THE 2021 HD MODEL FEATURES A NEW HEAVY DUTY GAS GAUGE





THE 2021 BC-8 HAS A NEW HEAVY DUTY TYPE CHAFF FAN. STARTING IN 2020 THE CHAFF FAN EXHAUST SIZE WAS INCREASED TO 120MM REQUIRING A 5" PIPE CONNECTION TO CHAFF UNIT. ALSO THE COOLING TRAY EXHAUST REQUIRES A 5" PIPE CONNECTION. YOU MAY WISH TO USE EITHER 5" PIPE OR USE A 5" TO 6" REDUCER PIPE AND USE STANDARD 6" EXHAUST PIPE FOR EACH EXHAUST. IF CHOOSING TO RUN THE TWO 5 OR 6" PIPES TOGETHER USING A BLAST DAMPER OR BACKDRAFT DAMPER YOU WILL THEN NEED TO INCREASE THE EXIT SIZE PIPE LIKELY TO 8". OF COURSE IF YOU CAN EVER RUN THE TWO PIPES OUT SEPARATELY THIS IS ALWAYS BETTER.

BC ROASTER COLORS

**BC ROASTERS NOW COME IN 3 BODY COLORS:
BLACK, RED & WHITE**



BLACK BODY WITH BLACK
CHECKERED HOUSING

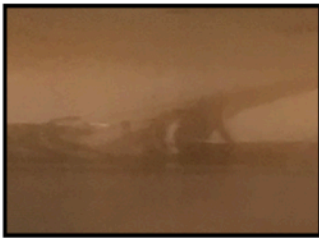


RED BODY WITH GOLD
CHECKERED HOUSING



WHITE BODY WITH
ROSE GOLD HOUSING

**HOUSING COLORS INCLUDE 3 SOLID COLORS:
ROSE GOLD, BLACK TITANIUM, STAINLESS**
(COLORS MAY VARY FROM PICTURES SLIGHTLY)



ROSE GOLD

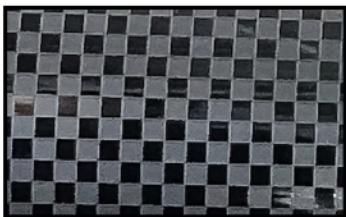


STAINLESS

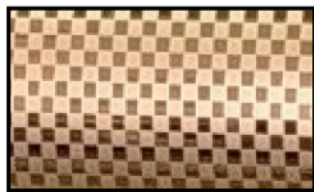


BLACK TITANIUM

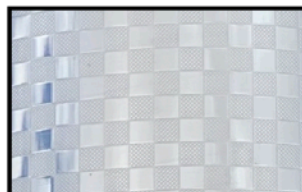
**ALSO HOUSING COLORS IN TEXTURED CHECKERED COLORS:
CHECKERED BLACK, SILVER OR GOLD:**



CHECKERED BLACK



CHECKERED GOLD



CHECKERED SILVER

BODY COLORS:
BLACK, RED OR WHITE

SOLID HOUSING
COLORS: ROSE GOLD,
BLACK TITANIUM,
STAINLESS

TEXTURE HOUSINGS:
CHECKERED GOLD,
CHECKERED BLACK OR
CHECKERED SILVER

BC-8 COMMERCIAL COFFEE ROASTER

- *FLOOR MODEL WITH CASTER WHEELS
- *DIRECT CONNECT CHAFF UNIT FOR SMALLER FOOTPRINT
- *CHOICE GAS MODELS

| | |
|--|--|
| SIZE (LxWxH) | 52X34X62" (INCLUDES DIRECT CONNECT CHAFF UNIT IN MEASUREMENT) |
| WEIGHT | 628LB |
| MINIMUM CLEARANCE FROM COMBUSTABLE MATERIALS | 18-24" |
| ROASTING CAPACITY | 2-8LB SINGLE WALL 1 OZ TO 8LB DOUBLE WALL |
| ROAST TIME & ROASTS PER HOUR | 9-14 MINUTES (5 ROASTS PER HOUR) |
| DRUM INFORMATION | SW DRUM: 5MM SUPERIOR 304SS CONTAINS 18% CHROMIUM AND 8% NICKEL DW DRUM: HAS TWO LAYERS OF 3MM + 2MM 304SS WITH 6MM OF AIR CUSHION. SS WELDING (TOTAL 11MM THICK) |
| ELECTRIC STATS: | GAS MODEL: SINGLE PHASE 220V 50/60HZ 610W REQUIRES STANDARD 15A BREAKER |
| ELECTRICAL PLUG TYPE | GAS MODELS: 20A 250V 3 WIRE NEMA 6-20P |
| FUEL CHOICES ON GAS MODELS | LPG GAS STANDARD WITH MODELS. NATURAL GAS CONVERSION KITS OFFERED FOR CUSTOMER INSTALLATION ONLY. |
| BURNER INFORMATION ON GAS MODELS | 2020 BURNERS: 12 STANDARD HD BURNERS 2021 MODELS 12 IN SW & 15 DW STANDARD HD BURNERS |
| BTU REQUIRMENTS | 60,000 BTU MINIMUM REQUIRED FOR NG LINE |
| GAS PRESSURE | LPG: 12-16WC (3-4KPA) MARSHALL 1912/197 REGULATOR RECOMMENDED NG: 7-14WC |

| EXHAUST SETUP | |
|---------------------------------------|---|
| EXHAUST PIPE REQUIREMENTS | POSITIVE PRESSURE EXHAUST VENTING WITH MINIMUM CLEARANCE 18-24" FROM COMBUSTABLE MATERIALS |
| MAXIMUM VENTING LENGTHS | 20-25' FROM CHAFF UNIT. DEDUCT 3-5' FOR 45-90 DEGREE PIPE ELBOWS. IF YOU MUST VENT AT LONGER LENGTHS CONSULT A LOCAL TECHNICIAN ON USE OF POSSIBLE BOOSTER FANS |
| MAXIMUM EXHAUST TEMPERATURES | 425-475F |
| CHAFF UNIT HIGH TEMP. | 300-350F |
| COOLING TRAY HIGH TEMP. | 200F |
| DATA LOGGING VIA ARTISAN OR CROPSTER | BUILT IN DATA LOGGER ATTACHES TO COMPUTER (PC OR MAC) VIA USB OR BLUETOOTH |
| K TYPE THERMOCOUPLES | BT & ET WITH TWO ADDITIONAL PREDRILLED CAPPED THREADED HOLES TO ADD OR ADJUST THERMOCOUPLES |
| MANUFACTURED IN CHINA FOR BC ROASTERS | CUSTOM BUILT FOR BC SPECS IN USA AND OVER 200 LANDS |

[HTTP://WWW.BUCKEYECOFFEE.COM/BC-COFFEE-ROASTERS.HTML](http://www.buckeyecoffee.com/bc-coffee-roasters.html)

BC ROASTERS
BUCKEYE, ARIZONA 85326
TONOPAH, ARIZONA 85354

TOLL FREE: 844.522.6333
[INFO@BUCKEYECOFFEE.COM](mailto:info@buckeyecoffee.com)
[INFO@BCROASTERS.COM](mailto:info@bcroasters.com)

