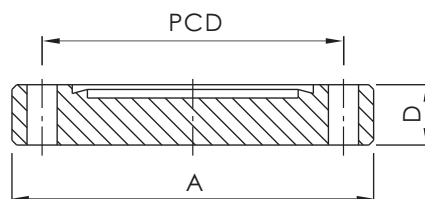


# CF Flanges



## CF BLANK FLANGE

\*Material: SS 304L

\*Tapped and Through Holes

Part Number	Flange Size	A (mm)	D (mm)	PCD (mm)	Bolt Holes	Diameter (mm) / Thread Type
CF-BL-133	CF1.33"(DN16)	33.70	7.60	26.97	6	4.37
CF-BL-133T	CF1.33"(DN16)	33.70	7.60	26.97	6	8-32
CF-BL-133M	CF1.33"(DN16)	33.70	7.60	26.97	6	M4
CF-BL-212	CF2.12"(DN25)	53.80	11.90	41.28	4	6.73
CF-BL-212T	CF2.12"(DN25)	53.80	11.90	41.28	4	1/4-28
CF-BL-212M	CF2.12"(DN25)	53.80	11.90	41.28	4	M6
CF-BL-275	CF2.75"(DN40)	69.30	12.70	58.72	6	6.73
CF-BL-275T	CF2.75"(DN40)	69.30	12.70	58.72	6	1/4-28
CF-BL-275M	CF2.75"(DN40)	69.30	12.70	58.72	6	M6
CF-BL-338	CF3.38"(DN50)	85.30	16.00	72.39	8	8.43
CF-BL-338T	CF3.38"(DN50)	85.30	16.00	72.39	8	5/16-24
CF-BL-338M	CF3.38"(DN50)	85.30	16.00	72.39	8	M8
CF-BL-450	CF4.50"(DN63)	113.50	17.30	92.15	8	8.43
CF-BL-450T	CF4.50"(DN63)	113.50	17.30	92.15	8	5/16-24
CF-BL-450M	CF4.50"(DN63)	113.50	17.30	92.15	8	M8
CF-BL-462	CF4.62"(DN80)	117.00	19.10	102.36	10	8.43
CF-BL-462T	CF4.62"(DN80)	117.00	19.10	102.36	10	5/16-24
CF-BL-462M	CF4.62"(DN80)	117.00	19.10	102.36	10	M8
CF-BL-600	CF6.00"(DN100)	151.60	19.80	130.25	16	8.43
CF-BL-600T	CF6.00"(DN100)	151.60	19.80	130.25	16	5/16-24
CF-BL-600M	CF6.00"(DN100)	151.60	19.80	130.25	16	M8
CF-BL-675	CF6.75"(DN130)	170.69	21.30	151.61	18	8.43
CF-BL-675T	CF6.75"(DN130)	170.69	21.30	151.61	18	5/16-24
CF-BL-675M	CF6.75"(DN130)	170.69	21.30	151.61	18	M8
CF-BL-800	CF8.00"(DN160)	202.44	22.35	181.05	20	8.43
CF-BL-800T	CF8.00"(DN160)	202.44	22.35	181.05	20	5/16-24
CF-BL-800M	CF8.00"(DN160)	202.44	22.35	181.05	20	M8
CF-BL-1000	CF10.00"(DN200)	253.24	24.60	231.85	24	8.43
CF-BL-1000T	CF10.00"(DN200)	253.24	24.60	231.85	24	5/16-24
CF-BL-1000M	CF10.00"(DN200)	253.24	24.60	231.85	24	M8
CF-BL-1200	CF12.00"(DN250)	304.40	25.90	283.97	32	8.43
CF-BL-1200T	CF12.00"(DN250)	304.40	25.90	283.97	32	5/16-24
CF-BL-1200M	CF12.00"(DN250)	304.40	25.90	283.97	32	M8
CF-BL-1325	CF13.25"(DN270)	335.79	28.45	306.32	30	10.49
CF-BL-1325T	CF13.25"(DN270)	335.79	28.45	306.32	30	3/8-24
CF-BL-1325M	CF13.25"(DN270)	335.79	28.45	306.32	30	M10
CF-BL-1400	CF14.00"(DN300)	354.84	28.45	325.37	30	10.49
CF-BL-1400T	CF14.00"(DN300)	354.84	28.45	325.37	30	3/8-24
CF-BL-1400M	CF14.00"(DN300)	354.84	28.45	325.37	30	M10
CF-BL-1650	CF16.50"(DN350)	418.34	28.45	388.87	36	10.49
CF-BL-1650T	CF16.50"(DN350)	418.34	28.45	388.87	36	3/8-24
CF-BL-1650M	CF16.50"(DN350)	418.34	28.45	388.87	36	M10

\*Note: SS 316LN Material Available on Request.

CF