



# The Madagascar Water Project

MWP-1  
ANDOVORANTO

Lat: 18° 56' 49.83" S Long: 49° 6' 30.54" E

## MWP – 1

**Date Of Installation: March 2015**

Pump Type: Batimax

Screen / Well Point: PVC

Pipe: PVC

Flow: 25 liters / minute

**Current pedestal: Wood table**

### Repairs & Maintenance

Sept. 2017: Changed Pump: New 9 meter

July 2018: Changed Pump: New 9 meter

Nov 2019: routine maintenance

Feb 2020: Complete Rebuild: new slab, table, Batimax pump

Sept 2020: routine maintenance

Sept 2021: routine maintenance



➤ October 2021

**•Previous Status:**

*No water flowing on the 5 first stroke, late production, weak flow and bit hard*

**• Action Taken:**

*Stop the pressure leak with Teflon tape. Tighten everything with washer. Cleaning the pump body and the room,*

**Note:**

- *The screen needs to be cleaned up, although it is difficult since the BHA is entirely made with PVC.*
- *The well is well maintained*

**• Current Status:**

*Working but less flow and hard to pump*

**• Recommendation:**

*Let's wait and see if the flow will improve later.*



# The Madagascar Water Project

MWP-2  
ANDOVORANTO

Lat: 18° 57' 1.06" S Long: 49° 6' 34.08" E

## MWP – 2

**Date Of Installation:** March 2015

Pump Type: Batimax

Screen / Well Point: PVC

Pipe: PVC

Flow: 25 liters / minute

**Current pedestal:** Wood table

### Repairs & Maintenance

Sept. 2017: Changed Pump: New 9 meter

July 2018: Changed Pump: New 9 meter

Nov 2019: Routine maintenance

Feb 2020: Complete Rebuild: new slab, table, Batimax pump

Sept 2020: Upgrade pump with new XL Pump

Sept 2021: Routine maintenance



Photo Oct 2021

➤ [October 2021](#)

**•Previous Status:**  
*Working good, table ok, cement slab broken*

**Action Taken:**  
*Routine maintenance, doing cement slab*

**• Current Status:**  
Working good

**Note:**  
- *The well is well maintained*





# The Madagascar Water Project

**MWP-3  
ANDOVORANTO**

Lat: 18° 57' 8.24" S Long: 49° 6' 32.69" E

## MWP – 3

**Date Of Installation: March 2015**

Pump Type: Batimax

Screen / Well Point: PVC

Pipe: PVC

Flow: 25 liters / minute

**Current pedestal: Wood table**

### Repairs & Maintenance

Feb 2017: Changed Pump: New Batimax

Nov 2019: Routine maintenance

February 2020: Complete Rebuild New slab, table, Batimax pump

Sept 2020: Routine maintenance

Sept 2021: Changing to new Standard pump



Photo Sept 2021

➤ October 2021

•**Status on Arrival:**  
Working good, table ok,  
cement slab broken

•**Action Taken:**  
Routine maintenance, doing  
cement slab

•**Current Status:** Working good

**Note:**

- *The well is well maintained*





# The Madagascar Water Project

MWP-4  
ANDOVORANTO

Lat: 18° 56' 43.72" S Long: 49° 6' 38.53" E

## MWP – 4

**Date Of Installation: March 2015**

Pump Type: New Batimax

Screen / Well Point: PVC

Pipe: PVC

Flow: 25 liters / minute

**Current pedestal: Wood table**

### Repairs & Maintenance

Sept. 2017: Changed : New 9 meter

July 2018: Changed Pump: New 9 meter

Nov 2019: routine maintenance, repair table

February 2020: Complete Rebuild: new slab, table, Batimax Pump

Sept 2020: Upgrade pump with new XL Pump

Sept 2021: Routine maintenance



Photo Oct 2021

➤ [October 2021](#)

### •Previous status:

Well flowing Good with roof and fence, pump top cover loose as the pump body is used.

•**Action taken:** change the pump body with new standard pump.

•**Current status:** producing well with roof and fence

**Note:** wood table still in good condition





# The Madagascar Water Project

MWP-5  
ANDAVAKIMENA

Lat 18° 52' 37.45"S Long 49° 8' 19.14"E

## MWP – 5 Ferry Crossing

**Date Of Installation: March 2015**

Pump Type: Batimax

Screen / Well Point: PVC

Pipe: PVC

Flow: 25 liters / minute

**Pedestal: Cast iron**

### Repairs & Maintenance

Sept 2017: Changed Pump: New 20m

July 2018: Changed Pump: New  
Batimax

Nov 2019: Changed Pump: Rebuilt  
Batimax

February 2020: Complete Rebuild  
with new slab, table, pump



Photo Oct 2021

➤ [September 2021](#)

•**Status on Arrival:** Working barely, pump tired

•**Action Taken:** Complete rebuilt with new Standard pump, new cast iron pedestal

•**Current Status:** Working

➤ [October 2021](#)

•**Status on Arrival:** Working good

•**Action Taken:** routine maintenance

•**Current Status:** Working

**Note:** well has shelter and wall





# The Madagascar Water Project

**MWP-8  
ANDOVORANTO**

Lat: 18° 57' 40.70" S Long: 49° 6' 24.29" E

## MWP – 8

**Date Of Installation: March 2016**

Pump Type: Batimax

Screen / Well Point: PVC

Pipe: steel

Flow: 25 liters / minute

**Current pedestal: Wood table**

### Repairs & Maintenance

July 2018: Changed Pump: New

Batimax

Nov 2019: Changed Pump: Rebuilt

Batimax

February 2020: Action Taken: Routine maintenance

Sept 2020: complete rebuilt of table, Leather cup changed



Photo Oct 2021

➤ [September 2021](#)

- Status on Arrival:** Working
- Action Taken:** Pump being Changed to rebuilt pump
- Current Status:** Working

➤ [October 2021](#)

- Status on Arrival:** Working good
- Action Taken:** verification
- Current Status:** Working

**Note:** well maintained





# The Madagascar Water Project

MWP-9  
ANDOVORANTO

Lat 18°57'20.44"S Long 49° 6'34.19"E

## MWP – 9 Mayor's Office

**Date Of Installation:** March 2016

Pump Type: Batimax

Screen / Well Point: PVC

Pipe: PVC

Flow: 25 liters / minute

**Pedestal: Cast iron**

### Repairs & Maintenance

July 2018: Changed Pump: New Batimax

Nov 2019: Changed Pump: Rebuilt Batimax

February 2020: Routine Maintenance

Sept 2021: Complete rebuilt with new

Standard pump, new cast iron pedestal



Photo Oct 2021

➤ [Oct 2021](#)

•**Previous Status:**  
Working good

•**Action Taken:**  
routine maintenance

•**Current Status:**  
Working



Lat: 19° 8' 5.66" S Long 49° 1' 41.33" E

## MWP – 10

**Date Of Installation: March 2016**

Pump Type: Batimax

Screen / Well Point: PVC

Pipe: PVC

Flow: 25 liters / minute

### Repairs & Maintenance

July 2018: Complete Rebuild: new slab, table, new Batimax pump

Nov 2019: Routine Maintenance

### February 2020:

Status on Arrival: Not Working – Pump Broken

Action Taken: Rebuild table, replacement pump not available

Current Status: Not Working

Recommendations:

- 1) New pump, slab
- 2) Build enclosure / shelter
- 3) Continue work with Well Committee



### SEPT

- Status on Arrival: Pump not working, lack of pump
- Action Taken: Install new batimax pump
- Current Status: Working

### OCT

- Previous status: produce well, good shelter and good wall, slab broken
- Action taken: routine maintenance, re-do slab
- Current status: produce well
- Note: has good shelter and wall

Note: Infrastructure will last 2 years



# The Madagascar Water Project

**MWP-11  
AMBILABE**

Lat: 19° 47' 49.63" S Long: 48° 48' 29.69" E

## **MWP – 11**

**Date Of Installation: March 2016**

Pump Type: Batimax

Screen / Well Point: Steel

Pipe: Steel

Flow: 25 liters / minute

### **Repairs & Maintenance**

July 2018:

- 1) Changed Pump: New Batimax
- 2) Rebuilt table

June 2019: Changed Pump: Rebuilt Batimax and Table

**February 2020:**

Status on Arrival: Working

Action Taken: Routine maintenance

Current Status: Working

Recommendations:

- 1) Build enclosure / shelter
- 2) Continue work with Well Committee



Photo October 2020

### **SEPT**

- Status on Arrival: Working
- Action Taken: Routine maintenance
- Current Status: Working
- Recommendation:
  - Pump or inside spares need to be replaced Asap
  - Strengthen social, Shelter

### **OCT**

- Previous status: produce well
- Action taken: Setting up rebuilt Batimax pump
- Current status: producing, good flow.
- Recommendation: strengthen social
- Note: Batimax pump, good shelter, good wall.
- Note: Table still last 8 more months





# The Madagascar Water Project

**MWP-12  
TSIVANGIANA**

Lat: 19° 39' 4.62" S Long: 48° 47' 4.89" E

## MWP – 12

**Date Of Installation: March 2016**

Pump Type: Batimax

Screen / Well Point: PVC

Pipe: PVC

Low Flow: 15 liters / minute

### Repairs & Maintenance

July 2018: Changed Pump: New 9m, Rebuild Table

Oct 2019: Repair table, slab, Changed Pump: Rebuilt Batimax

**February 2020:**

Status on Arrival: Working

Action Taken: Routine maintenance

Current Status: Working, relatively low flow

Recommendations:

- 1) Complete Rebuild: new slab, table, pump
- 2) Build enclosure / shelter
- 3) Continue work with Well Committee



Photo September 2020

### SEPT

- Status on Arrival: Not Working, problem of pump
- Action Taken: Complete rebuilt with New XL PUMP
- Setting up of XL pump stand by securing maximum the hose. The test of flow is very good and the well is stable and secured).
- Current Status: Working

### OCT

- Previous status: produce well
- Action taken: routine maintenance
- Current status: produce, good flow
- Recommendation: strengthen Social
- Note: XL Pump, wall, no shelter
- Note: Infrastructure will still last 2year

Lat: 19°39'32.72"S Long: 48°47'6.01"E

## MWP – 16

**Date Of Installation: September 2016**

Pump Type: Batimax

Screen / Well Point: PVC

Pipe: PVC

Flow: 20 liters / minute

### Repairs & Maintenance

July 2018: Repair table, repair slab, Change Pump:  
New 9 meter

June 2019: Replace table, repair slab, Changed  
Pump: Rebuilt Batimax

### February 2020:

Status on Arrival: Not Working – pump cracked

Action Taken: Replace Pump: Rebuilt Batimax

Current Status: Working

Recommendations:

- 1) Replace pump
- 2) Build enclosure / shelter
- 3) Continue work with Well Committee



Photo October 2020

### SEPT

•Status on Arrival: Not Working, problem of pump

•Action Taken: Complete rebuilt with New XL PUMP.  
(Setting up of XL pump stand by securing maximum the hose. The test of flow is very good and the well is stable and secured).

•Current Status: Working

•Recommendation:  
-Strengthen social

### OCT

•Status on Arrival: Working well

•Action Taken: general check

•Current Status: Working

•Recommendation:  
-Strengthen social

Note: Infrastructure will still last 2year





# The Madagascar Water Project

**MWP-17  
TSIVANGIANA**

Lat: 19°39'19.78"S Long: 49°3'23.03"E

## MWP – 17 Tsivangiana School

**Date Of Installation: September 2016**

Pump Type: Batimax

Screen / Well Point: PVC

Pipe: PVC

Flow: 15 liters / minute

### Repairs & Maintenance

July 2018: Repair slab, repair table, Change

Pump: New Batimax

Oct 2019: : Repair slab, replace table,

Change Pump: Rebuilt Batimax

### February 2020:

Status on Arrival: Not Working – needs new cup

Action Taken: Routine maintenance

Current Status: Working

Recommendations:

- 1) Replace pump
- 2) Continue work with Well Committee



Photo October 2020

### SEPT

- Status on Arrival: Working
- Action Taken: Routine maintenance
- Current Status: Working
- Recommendation:  
-Strengthen social

### OCT

- Previous status: produce well
- Action taken: routine maintenance
- Current status: produce, good flow
- Recommendation: strengthen Social, table need to be changed on next trip
- Note: good shelter, good wall



MADAGASCAR  
WATER PROJECT

# The Madagascar Water Project

MWP-21  
AMBILABE

Lat: 19° 47' 46.96" S Long: 49° 3' 23.03" E

## MWP – 21

**Date Of Installation: October 2016**

Pump Type: Batimax

Screen / Well Point: PVC

Pipe: PVC

Flow: 25 liters / minute

### Repairs & Maintenance

July 2018: Repair table, Changed Pump: New Batimax

June 2019: Changed Pump: Rebuilt Batimax

### February 2020:

Status on Arrival: Working

Action Taken: Routine maintenance

Current Status: Working

Recommendations:

- 1) Complete Rebuild: new slab, table, pump
- 2) Improve enclosure / shelter
- 3) Continue work with Well Committee



Photo October 2020

### SEPT

- Status on Arrival: Not Working, problem of pump
  - Action Taken: Complete rebuilt with New XL PUMP
- Setting up of XL pump stand by securing maximum the hose. The test of flow is very good and the well is stable and secured).
- Current Status: Working
  - Recommendation:  
-Strengthen social

### OCT

- Previous status: produce well
- Action taken: routine maintenance
- Current status: produce well, good flow
- Recommendation: strengthen social
- Note: XL Pump, good shelter, good wall

Note: Infrastructure will still last 2year





# The Madagascar Water Project

MWP-23  
SONDRARA

Lat: 19° 4' 28.44" S Long: 49° 3' 23.18" E

## MWP – 23

**Date Of Installation: February 2017**

Pump Type: Batimax

Screen / Well Point: PVC

Pipe: Steel

Flow: 25 liters / minute

**Pedestal: Cast iron**

### Repairs & Maintenance

July 2018: Changed Pump to New

Batimax, Rebuild table

Oct 2019: Routine Maintenance

February 2020: Routine maintenance

Sept 2020: complete rebuilt with new XL pump



➤ [Oct 2021](#)

• **Previous Status:**  
*Working but weak flow,*

• **Action Taken:**  
*Complete rebuilt with new XL pump and Cast iron pedestal*

• **Current Status:**  
*Working, flow improved*

• **Recommendation:**  
*Let's wait and see if the flow will improve later.*

Photo Oct 2021



# The Madagascar Water Project

MWP-26  
ANDOVORANTO

Lat: 18° 57' 3.35" S Long: 49° 6' 37.24" E

## MWP – 26

**Date Of Installation: Feb 2017**

Pump Type: Batimax

Screen / Well Point: Steel

Pipe: Steel

Beneficiaries: CEG School: 230 children

Flow: 20 liters / minute

**Current pedestal: Wood table**

### Repairs & Maintenance

April 2018: Changed Pump: New Batimax

Nov 2019: Changed Pump: Rebuilt Batimax

February 2020: Routine Maintenance

Sept 2020: complete rebuilt including new pump



➤ [Oct 2021](#)

• **Previous Status:**

*Not working, soft pumping seems pumping air, it looks like WT dropped down and well point is above*

• **Action Taken:**

*Testing well by changing pump*

• **Current Status:**

*Not Working*

• **Note:**

- *Ranowash installed a twin pump close to it, Users put them together in a same location, same wall.*

➤ **Recommendation:**

- *To shut down the well*

Photo Oct 2021





# The Madagascar Water Project

MWP-28  
ANDOVONA

Lat: 18° 53' 28.3" S Long: 49° 7' 6.83" E

## MWP – 28

**Date Of Installation: Sept 2017**

Pump Type: 9 meter

Screen / Well Point: steel

Pipe: steel

Low Flow: 15 liters / minute

Water slightly brown, odorous

### Repairs & Maintenance

July 2018: Changed Pump: Rebuilt 9m

November 2019: routine maintenance, pump working but needs renovations

### February 2020:

Status on Arrival: not working

Action Taken: unable to repair, no parts, logistics

Current Status: not working

Recommendations:

- 1) Complete Rebuild: new slab, table, pump
- 2) Continue work with Well Committee



Photo September 2020

## SEPT

•Status on Arrival: Not Working, problem of pump

•Action Taken:

-Complete rebuilt with New XL PUMP  
Test of flow is very good and the well is stable and secured.

-Training of new technician

## OCT

•Previous status: produce well, good flow, base stable

•Action taken: routine maintenance

•Current status: produce, good flow

•Recommendation: strengthen Social

•Note: XL pump working well, people are building a shelter

Note: Infrastructure will still last 2year



# The Madagascar Water Project

MWP-29  
VAVONY

Lat: 49° 7' 6.83"E Long 49° 7' 6.83"E

## MWP – 29

**Date Of Installation: Sept 2017**

Pump Type: 9 meter

Screen / Well Point: PVC

Pipe: steel

Flow: 25 liters / minute

### Repairs & Maintenance

July 2018: Changed Pump: Rebuilt 9m

Nov 2019: Changed Pump: New Batimax

### February 2020:

Status on Arrival: Working

Action Taken: New slab, routine pump maintenance

Current Status: Working

Recommendations: Continue work with Well Committee



Photo September 2020

### SEPT

- Status on Arrival: Working
- Action Taken: routine maintenance
- Current Status: Working
- Recommendation:  
-Strengthen social

### OCT

- Previous status: did not produce
- Action taken: change to rebuilt batimax pump
- Current status: produce, good flow

Note: Need complete rebuild next year including pump





# The Madagascar Water Project

MWP-32  
AMBOKAMBATSY

Lat: 19° 0' 52.01" S Long: 49° 4' 43.86" E

## MWP – 32

**Date Of Installation: September 2017**

Pump Type: Batimax  
Screen / Well Point: Steel  
Pipe: Steel  
Flow: 25 liters / minute

### Repairs & Maintenance

April 2018: Complete Rebuild: new slab, table, Batimax pump  
Nov 2019: repaired table, replaced pump with rebuilt Batimax

### February 2020:

Status on Arrival: Working

Action Taken: Routine maintenance

Current Status: Working

### Recommendations:

- 1) Continue work with Well Committee



Photo September 2020

### SEPT

- Status on Arrival: Working good, Well walled, no roof
- Action Taken: routine maintenance
- Current Status: Working

### OCT

- Status on Arrival: Working good
- Action Taken: routine maintenance
- Current Status: Working , good flow
- Recommendation:  
-Strengthen social



# The Madagascar Water Project

**MWP-33**  
**AMBODITAFARA**

Lat: 19° 2' 32.81" S Long: 49° 4' 3.88" E

## MWP – 33

**Date Of Installation: September 2017**

Pump Type: Batimax

Screen / Well Point: Steel

Pipe: Steel

Flow: 25 liters / minute

Replaces: MWP-25, seasonally dry

### Repairs & Maintenance

April 2018: Complete Rebuild: New slab, table, Batimax pump

Nov 2019: Routine maintenance

### February 2020:

Status on Arrival: Working

Action Taken: Routine Maintenance

Current Status: Working

Recommendations:

- 1) New pump
- 2) Build enclosure / shelter
- 3) Continue work with Well Committee



Photo October 2020

## SEPT

- Previous status: didn't Produce due to leather cup, no shelter, no wall

- Action taken: Change to new Batimax pump

## OCT

- Current status: produce with very poor flow due to water table dropped

- Recommendation: strengthen Social

- Note: Leather cup broken in 1day, well lack of care, after strong sensitization, people promised to build a shelter...





# The Madagascar Water Project

**MWP-34  
ANALALAVA**

Lat: 19° 6' 57.74" S Long: 49° 2' 14.89" E

## **MWP – 34**

**Date Of Installation: September 2017**

Pump Type: Batimax

Screen / Well Point: Steel

Pipe: Steel

Flow: 25 liters / minute

### **Repairs & Maintenance**

July 2018: Changed Pump: Rebuilt Batimax

April 2019:

- 1) Replace table
- 2) Changed pump: New Batimax

Nov 2019: routine maintenance

### **February 2020:**

Status on Arrival: Working

Action Taken: Routine maintenance

Current Status: Working

Recommendations:

- 1) Build enclosure, shelter
- 2) Continue work with Well Committee



Photo September 2020

## **SEPT**

- Previous status: Not working, problem of Leather cup and Stopper plug

- Action taken: Change Stopper plug and doing routine maintenance

- Final status: working perfectly

## **OCT**

- Current status: produce well

- Recommendation: strengthen Social



# The Madagascar Water Project

MWP-36  
MAHATSARA

Lat: 19° 8' 5.66" S Long: 49° 1' 41.33" E

## MWP – 36

**Date Of Installation: September 2017**

Pump Type: 9 meter

Screen / Well Point: Steel

Pipe: Steel

Flow: 25 liters / minute

### Repairs & Maintenance

July 2018: Changed Pump: Rebuilt 9m

Oct 2019: repair pump – broken handle

### February 2020:

Status on Arrival: Working

Action Taken: Routine Maintenance

Current Status: Working

Recommendations:

- 1) Repair table, change pump
- 2) Organize Well Management Committee



Photo September 2020

## SEPT

- Previous Status: 9m pump broken, wood broken
- Action taken: complete rebuilt, 9m pump changed to New Batimax pump
- Final status: working well

## OCT

- Previous status: produce well, good flow
- Action taken: routine maintenance
- Current status: produce, good flow
- Recommendation: strengthen Social
- Note: new infrastructure, Batimax pump





# The Madagascar Water Project

MWP-37  
VOHITRAMPASINA

Lat: 19° 9' 16.68" S Long: 49° 1' 9.73" E

## MWP – 37

**Date Of Installation: September 2017**

Pump Type: Rebuilt Batimax

Screen / Well Point: Steel

Pipe: Steel

Flow: 25 liters / minute

### Repairs & Maintenance

Dec 2017:

1) Changed Pump: New Batimax

2) Rebuild table

Oct 2019: Complete Rebuild: New slab, table, Batimax pump

### February 2020:

Status on Arrival: Working

Action Taken: Routine maintenance

Current Status: Working

Recommendations: Continue work with Well Committee



## SEPT

- Previous Status: Pump not working due to problem of Leather cup
- Action taken: routine maintenance, complete rebuilt of table
- Final status: working well, Final status: working well, table new

## OCT

- Previous status: produce well
- Action taken: routine maintenance
- Current status: produce, good flow
- Recommendation: strengthen Social

Lat: 19° 11' 40.11" S Long: 49° 0' 28.06" E

## MWP – 41

**Date Of Installation: September 2017**

Pump Type: 20-meter pump

Screen / Well Point: PVC

Pipe: Steel

Flow: 25 liters / minute

### Repairs & Maintenance

June 2019:

- 1) Rebuilt table
- 2) Changed Pump: New Batimax

Oct 2019: Routine Maintenance

**February 2020:**

Status on Arrival: Working

Action Taken: Routine Maintenance

Current Status: Working

Recommendations:

- 1) Improve enclosure / shelter
- 2) Continue work with Well Committee



Photo September 2020

### SEPT

- Previous Status: Pump works
- Wood table Ok
- Leather cup changed

### OCT

- Previous status: produce well, good flow
- Action taken: routine maintenance

• Current status: produce, good flow

• Recommendation: strengthen Social, change pump next time

Note: Wood table need to be change after 8 months





# The Madagascar Water Project

MWP-44  
AMPANALANA

Lat: 20° 5' 38.86" S Long: 48° 43' 44.62" E

## MWP – 44

### Date Of Installation: June 2018

Pump Type: 9-meter pump  
Screen / Well Point: Steel  
Pipe: Steel  
Flow: 25 liters / minute

### Repairs & Maintenance

Oct 2019: Repair table, Changed Pump:  
Rebuilt 9m

### February 2020:

Status on Arrival: Working

Action Taken: Routine maintenance

Current Status: Working

### Recommendations:

- 1) Build enclosure, shelter
- 2) Change pump
- 3) Continue work with Well Committee



Photo September 2020

## SEPT

- Previous status: Tired 9m pump still producing, table broken, no shelter
- Action taken: complete rebuilt with new Batimax pump
- Current status: produce, good flow
- Recommendation: strengthen Social
- Note: many people use the well

## OCT

- Previous status: didn't produce because leather cup broken
- Action taken: routine maintenance, training of new Local technicians
- Current status: produce, good flow
- Recommendation: strengthen Social
- Note: good shelter, good wall



# The Madagascar Water Project

MWP-45  
AMBODIHARINA

Lat: 20° 0' 52.9" S Long: 48° 46' 7.16" E

## MWP – 45

**Date Of Installation: June 2018**

Pump Type: 9-meter pump

Screen / Well Point: Steel

Pipe: Steel

Flow: 25 liters / minute

### Repairs & Maintenance

Oct 2019: Changed Pump: New Batimax

### February 2020:

Status on Arrival: Working

Action Taken: Routine Maintenance

Current Status: Working

Recommendations:

- 1) Improve enclosure, shelter
- 2) Continue work with Well Committee



Photo October 2020

SEPT

- Previous status: produce, no shelter no wall, pump weak
- Action taken: Complete rebuilt of table, setting new pump
- Current status: producing, good flow
- Recommendation: strengthen social
- Note: leather cup working, one spare left

OCT

- Previous status: produce well, good shelter and good wall
- Action taken: routine maintenance
- Current status: producing, good flow.
- Recommendation: strengthen social
- Note: leather cup working, one spare left, good shelter, good wall





# The Madagascar Water Project

MWP-46  
AMBODIHARINA

Lat: 20° 1' 4.95" S Long: 48° 46' 2.53" E

## MWP – 46

**Date Of Installation: June 2018**

Pump Type: 9-meter pump

Screen / Well Point: Steel

Pipe: Steel

Flow: 25 liters / minute

### Repairs & Maintenance

Oct 2019: Changed Pump: New Batimax

### February 2020:

Status on Arrival: Working

Action Taken: Changed new Batimax pump

Current Status: Working

Recommendations: Continue work with Well Committee



Photo September 2020

## SEPT

- Previous Status: Pump working due to problem of Leather cup
- Action taken: routine maintenance,
- Final status: working well

## OCT

- Previous status: produce well
- Action taken: routine maintenance
- Current status: produce, good flow
- Recommendation: strengthen Social



# The Madagascar Water Project

MWP-47  
ANDRANOTSARA

Lat: 20° 8' 32.9" S Long: 48° 42' 26.93" E

## MWP – 47

**Date Of Installation: June 2018**

Pump Type: 9-meter pump

Screen / Well Point: Steel

Pipe: Steel

Flow: 20 liters / minute

Water brown with slight odor

### Repairs & Maintenance

Nov 2019: Routine Maintenance

### February 2020:

Status on Arrival: Working

Action Taken: Routine Maintenance

Current Status: Working

### Recommendations:

- 1) Build enclosure, shelter
- 2) Change pump
- 3) Continue work with Well Committee



Photo September 2020

## SEPT

- Previous status: tired 9m pmp but still producing, slight smell and dark, table rotten

- Action taken: changed the 9m pump to used Batimax pump, complete rebuilt of table, slab

- Current status: producing, good flow.

## OCT

- Previous status: produce well, slight smell and dark,

- Action taken: routine maintenance, paint with color protector

- Current status: producing, good flow.

- Recommendation: need to emphasize social process



Lat: 20° 16' 30.93" S Long: 48° 39' 6.85" E



## MWP – 51

**Date Of Installation: July 2018**

Pump Type: 9-meter pump

Screen / Well Point: Steel

Pipe: Steel

Flow: 25 liters / minute, Salty water

### Repairs & Maintenance

**Nov 2019:** Routine Maintenance

**February 2020:** pump broken and abandoned

### ➤ October 2021

•**Status on Arrival:**

*The well has not been working for more than 1 year since the 9m pump is broken, moreover, not much people use it because water is salty.*

• **Action Taken:**

- *Pulled out the entire BHA*

**Note: the well point is completely cemented with hard red rusted beach sand**

• **Recommendation:**

*Abandon*



# The Madagascar Water Project

MWP-52  
ANALILA

Lat: 20° 16' 30.93" S Long: 48° 39' 6.85" E

## MWP – 52

**Date Of Installation: July 2018**

Pump Type: 9-meter pump

Screen / Well Point: Steel

Pipe: Steel

Flow: 25 liters / minute

MWP-52 is the only year-round source of fresh water

### Repairs & Maintenance

**April 2019:** Changed Pump: New Batimax

**Nov 2019:** Routine Maintenance

**February 2020:** Routine Maintenance

**Sept 2020:** Complete rebuild with rebuilt Batimax pump, new wood table



Photo of WP Oct 2021

### ➤ October 2021

#### •**Status on Arrival:**

*The well has not been working for more than 3 months, the problem was due to broken stopper plug.*

#### • **Action Taken:**

*- We were starting to change the stopper plug, but did not work. Then, changed the pump to new, but still not producing. Then, cleaned the existing check valve, re-put it on its place, but still not working. Then put a new valve, but still not producing, while pumping, the handle pushed back and it is very hard to pump.*

*So we pulled out the entire BHA, and drilled a new replacement well, with a number MWP144.*

*- **Note: the well point is completely cemented with hard sand***

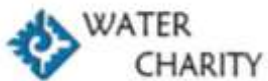
#### • **Recommendation:**

*Abandon MWP49 and drill new well replacement*





MADAGASCAR  
WATER PROJECT



# The Madagascar Water Project

MWP-55  
MASOMELOKA

Lat: 20° 17' 9.64" S Long: 48° 37' 25.18" E

## MWP – 55

**Date Of Installation:** July 2018

Pump Type: 9-meter pump

Screen / Well Point: Steel

Pipe: Steel

Flow: 25 liters / minute

**Current pedestal:** Wood table

### Repairs & Maintenance

**Oct 2019:** Changed Pump: Rebuilt Batimax

**February 2020:** Routine Maintenance

**Sept 2020:** Complete rebuild with new XL Pump,  
new table



Photo Oct 2021

➤ [October 2021](#)

•**Status on Arrival:**

- *Well producing, pump and wood in good condition*
- *Well cared*

•**Action Taken:**

- *Routine maintenance*

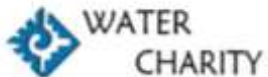
•**Current Status:**

*Working good*

**Note:** roof leveled up, well cared



MADAGASCAR  
WATER PROJECT



WATER  
CHARITY

# The Madagascar Water Project

MWP-56  
MASOMELOKA

Lat: 20° 16' 58.21" S Long: 48° 37' 42.67" E

## MWP – 56 Catholic Mission School

**Date Of Installation: July 2018**

Pump Type: 9-meter pump

Screen / Well Point: Steel

Pipe: Steel

Flow: 25 liters / minute

**Current pedestal: Wood table**

### Repairs & Maintenance

**Nov 2019:** Routine Maintenance

**February 2020:** Routine Maintenance

**Sept 2020:** Complete rebuild with new XL pump, new wood table



Photo Oct 2021

➤ October 2021

• **Previous Status:**

- The well has not been working for more than 3 months, the problem was the stopper plug of the pump which was broken.
- Slab broken

• **Action Taken:**

- Changing the tired pump to new Standard pump.
- Fix cement slab

• **Current status:**

Working good

➤ **Recommendation:**

Encourage the Priest to put shelter



Lat: 20° 16' 58.21" S Long: 48° 37' 42.67" E

## MWP – 56 Catholic Mission School

**Date Of Installation: July 2018**

Pump Type: Standard pump on Bucket well

Screen / Well Point: PVC

Pipe: PVC

Flow: 25 liters / minute

### Repairs & Maintenance

**Nov 2019:** Routine Maintenance

**February 2020:** Routine Maintenance

**Sept 2020:** Complete rebuild with new XL pump, new wood table



Photo Oct 2021

### ➤ October 2021

#### • **Previous Status:**

- The well has not been working for more than 3 months, the problem was the BHA has dropped down,
- Wood rotten

#### • **Action Taken:**

- Changing the pump into new Standard pump, covering Bucket well with wood table
- Fixing tightly the BHA with a long pillar to avoid shaking.

#### • **Current status:**

Working good

#### ➤ **Recommendation:**

Encourage the Priest to put shelter



MADAGASCAR  
WATER PROJECT

# The Madagascar Water Project

Lat: 20° 15' 50.36" S Long: 48° 39' 10.13" E

MWP-57  
ANTANIAMBO

## MWP – 57

**Date Of Installation: July 2018**

Pump Type: Batimax

Screen / Well Point: Steel

Pipe: Steel

Flow: 25 liters / minute

**Current pedestal: Wood table**

### Repairs & Maintenance

**Nov 2019:** Routine Maintenance

**February 2020:** Routine Maintenance

**Sept 2020:** Complete rebuild with rebuilt Batimax pump, new wood table



Photo Oct 2021

### ➤ October 2021

•**Status on Arrival:**

- *Well producing but weak pump*

•**Action Taken:**

- *Routine maintenance*

•**Current Status:**

*Working*

➤ **Recommendation:**

*Pump needs to be renewed on next trip*





# The Madagascar Water Project

MWP-59  
SOHIHY

Lat: 19° 4' 31.42" S Long: 49° 3' 23.03" E

## MWP – 59

**Date Of Installation: July 2018**

Pump Type: Batimax

Screen / Well Point: Steel

Pipe: Steel

Flow: 25 liters / minute

### Repairs & Maintenance

Feb 2019: Repair pump after fire: new table, pump

Nov 2019: Routine Maintenance

### February 2020:

Status on Arrival: Not Working

Action Taken: Routine Maintenance – new leather cup needed to get pump working

Current Status: Working

Recommendations:

- 1) Build enclosure, shelter
- 2) Change pump
- 3) Continue work with Well Committee



Photo October 2020

## OCT

- Previous status Oct: did not produce due to problem of Stopper plug, leather cup. Wood rotten.

- Action taken: complete rebuilt of new generation table, settling of renewed Batimax pump.

- Current status: producing. Does not have a good flow.

- Recommendation: villagers need to build a shelter.

- Note: the photo was taken before painting final green paint color

Lat: 20° 12' 57.44" S Long: 48° 40' 27.71" E

## MWP – 60

**Date Of Installation: February 2019**

Pump Type: Batimax

Screen / Well Point: Steel

Pipe: Steel

Flow: 25 liters / minute

### Repairs & Maintenance

Feb 2019: Repair pump after fire: new table, pump

Nov 2019: Routine Maintenance

### February 2020:

Status on Arrival: Not Working – pump broken

Action Taken: None, pump needs to be replaced and no spare available

Current Status: Not Working

Recommendations:

- 1) Build enclosure, shelter
- 2) Change pump
- 3) Continue work with Well Committee



Photo October 2020

## OCT

•Previous status: did not produce due to problem of pump, the top is broken and pump is very tired. Wood rotten. Well walled.

•Action taken: complete rebuilt with new generation table, settling of renewed Batimax pump.

•Current status: producing, good flow.

•Recommendation: villagers need to build a shelter.





# The Madagascar Water Project

MWP-61  
NEW SOHIHY

Lat: 20° 13' 26.30" S Long: 48° 39' 53.88" E

## MWP – 61

**Date Of Installation: July 2018**

Pump Type: Batimax

Screen / Well Point: Steel

Pipe: Steel

Flow: 25 liters / minute

Built in community that later became  
"New Sohihy" after the Jan 2019 fire.

### Repairs & Maintenance

Nov 2019: Routine Maintenance

### February 2020:

Status on Arrival: Working

Action Taken: Routine Maintenance

Current Status: Working

Recommendations:

- 1) Improve shelter
- 2) Continue work with Well Committee



Photo October 2020

## OCT

- Previous status: produce but need to be poored due to problem of check valve. Pump still good. Wood rotten. Well walled and good shelter.

- Action taken: complete rebuilt with new table and new check valve, change stopper plug.

- Current status: producing, good flow.

- Recommendation: assist well committee



# The Madagascar Water Project

MWP-63  
AMPANOTOANA

Lat: 20° 12' 27.06" S Long: 48° 40' 21.12" E

## MWP – 63

**Date Of Installation: July 2018**

Pump Type: 9-meter pump

Screen / Well Point: Steel

Pipe: Steel

Flow: 25 liters / minute

### Repairs & Maintenance

July 2019: Changed Pump: New Batimax

Nov 2019: Routine Maintenance

### February 2020:

Status on Arrival: Not Working, pump broken

Action Taken: None, pump needs to be replaced and no spare available

Current Status: Not Working

### Recommendations:

- 1) Improve enclosure, shelter, well security
- 2) Change pump
- 3) Train Technician, Continue work with Well Committee



Photo October 2020

## OCT

•Previous status: working well. Table rotten. Well with shelter, wall.

•Action taken: complete rebuilt of new generation table.

•Current status: producing, good flow.

•Recommendation: assist well committee.

•We will continue to work on that path today.





# The Madagascar Water Project

MWP-64  
ANTANANDAVA

Lat: 20° 15' 0.58" S Long: 48° 39' 9.59" E

## MWP – 64

**Date Of Installation: July 2018**

Pump Type: Batimax

Screen / Well Point: Steel

Pipe: Steel

Flow: 20 liters / minute

Water Quality: slight odor, brown color

### Repairs & Maintenance

Nov 2019: Routine Maintenance

### February 2020:

Status on Arrival: Working

Action Taken: Routine Maintenance

Current Status: Working

Recommendations:

- 1) Improve enclosure, shelter, well security
- 2) Continue work with Well Committee



Photo October 2020

## OCT

- Previous status: produce with slight odor and water not clear, Pump tired. No roof no wall.

- Action taken: complete rebuilt, change stopper plug, routine maintenance.

- Current status: producing, good flow but water still have slight odor and little black.

- Recommendation: assist well committee, build shelter, need new pump

# The Madagascar Water Project

MWP-65  
ANDAKOROLAVA

Lat: 20° 14' 34.22" S Long: 48° 39' 21.41" E

## MWP – 65

**Date Of Installation: July 2018**

Pump Type: Batimax

Screen / Well Point: Steel

Pipe: Steel

Flow: 20 liters / minute

Water Quality: slight odor, brown color

### Repairs & Maintenance

Nov 2019: Routine Maintenance

### February 2020:

Status on Arrival: Working

Action Taken: Routine Maintenance

Current Status: Working

Recommendations:

- 1) Build enclosure, shelter, improve well security
- 2) Continue work with Well Committee



### OCT

•Previous status: produce with slight odor and little black, Pump in good condition. No roof no wall.

Action taken: complete rebuilt, change stopper plug, routine maintenance.

•Current status: producing with same status (slight odor and water not clear), good flow.

•Recommendation: assist well committee





# The Madagascar Water Project

MWP-66  
ANTAROBY

Lat: 20° 14' 13.11" S Long: 48° 39' 32.07" E

## MWP – 66

**Date Of Installation: July 2018**

Pump Type: Batimax

Screen / Well Point: Steel

Pipe: Steel

Flow: 20 liters / minute

Water Quality: slight odor, brown color

### Repairs & Maintenance

Nov 2019: Routine Maintenance

### February 2020:

Status on Arrival: Working

Action Taken: Routine Maintenance

Current Status: Working

Recommendations:

- 1) Improve shelter, well security
- 2) Continue work with Well Committee



Photo October 2020

### OCT

•Previous status: Didn't produce due to problem of check valve. Wood rotten. Well walled and good shelter.

•Action taken: complete rebuilt with new table, new check valve, new rebuilt Batimax pump.

•Current status: producing, good flow.

•Recommendation: assist well committee



# The Madagascar Water Project

MWP-67  
ANKAZOMIRAFY

Lat: 19° 57' 15.39" S Long: 48° 47' 55.8" E

## MWP – 67

**Date Of Installation: July 2018**

Pump Type: 9-meter pump

Screen / Well Point: Steel

Pipe: Steel

Flow: 25 liters / minute

### Repairs & Maintenance

Oct 2019: Complete Rebuild: New slab, table, New Batimax pump

### February 2020:

Status on Arrival: Working

Action Taken: Routine Maintenance

Current Status: Working, well managed

Recommendations:

- 1) Build enclosure, shelter
- 2) Continue work with Well Committee



Photo October 2020

## SEPT

•Previous status: Didn't produce due to problem Pump. Wood rotten. Well walled and good shelter.

•Action taken: complete rebuilt with new table, new Batimax pump.

•Current status: producing, good flow.

•Recommendation: assist well committee

## OCT

Nothing to mention

Final status: Working fine





# The Madagascar Water Project

MWP-68  
TSANGAMBATO

Lat: 19° 58' 25.89" S Long: 48° 47' 12.36" E

## MWP – 68

**Date Of Installation: July 2018**

Pump Type: Batimax

Screen / Well Point: Steel

Pipe: Steel

Flow: 20 liters / minute

### Repairs & Maintenance

Nov 2019: Routine Maintenance

### February 2020:

Status on Arrival: Working

Action Taken: Routine Maintenance

Current Status: Working

Recommendations:

- 1) Improve enclosure, well security
- 2) Train Technician, continue and increase work with Well Committee



Photo September 2020

## SEPT

- Previous status: Didn't produce due to problem of Pump, wood rotten

- Action taken: complete rebuilt with new table, new Batimax pump.

- Current status: producing, good flow.

- Recommendation: assist well committee

- Note: shelter and enclosure well done

## OCT

Nothing to mention

Final status: Working fine



# The Madagascar Water Project

MWP-70  
SALEHY

Lat: 19° 59' 25.9" S Long: 48° 47' 6.13" E

## MWP – 70

**Date Of Installation: July 2018**

Pump Type: Batimax

Screen / Well Point: Steel

Pipe: Steel

Flow: 20 liters / minute

### Repairs & Maintenance

Nov 2019: Routine Maintenance

### February 2020:

Status on Arrival: Working

Action Taken: Routine Maintenance

Current Status: Working

Recommendations:

- 1) Change pump
- 2) Continue work with Well Committee



Photo September 2020

## SEPT

- Previous status: Didn't produce due to problem of Pump, wood rotten, shelter felt down.

- Action taken: complete rebuilt with new table, new check valve, new Batimax pump.

- Current status: producing, good flow.

- Recommendation: assist well committee

- Note: shelter and enclosure well done

## OCT

Nothing to mention

Final status: Working fine





# The Madagascar Water Project

MWP-71  
NIERENANA

Lat: 19° 34' 30.74" S Long: 48° 51' 55.87" E

## MWP – 71

**Date Of Installation: July 2018**

Pump Type: 9-meter pump

Screen / Well Point: Steel

Pipe: Steel

Flow: 20 liters / minute

### Repairs & Maintenance

Nov 2019: Routine Maintenance

### February 2020:

Status on Arrival: Working

Action Taken: Routine Maintenance

Current Status: Working

Recommendations:

- 1) New table, pump
- 2) Improve enclosure, shelter
- 3) Continue work with Well Committee



Photo September 2020

## SEPT

- Previous status: produce, wood rotten,
- Action taken: partially rebuilt table,
- Current status: producing, good flow.
- Recommendation: assist well committee

## OCT

- Previous status: produce well, good flow, has shelter and wall.
- Action taken: routine maintenance
- Current status: produce, good flow
- Recommendation: strengthen Social
- Note: 9m pump still working fine



# The Madagascar Water Project

MWP-72  
MAROSIKY

Lat: 19° 35' 37.55" S Long: 48° 52' 1.19" E

## MWP – 72

**Date Of Installation: July 2018**

Pump Type: 9-meter pump  
Screen / Well Point: Steel  
Pipe: Steel  
Flow: 25 liters / minute

### Repairs & Maintenance

Nov 2019: Routine Maintenance, pump in need of repair

### February 2020:

Status on Arrival: Not Working

Action Taken: Completely Rebuilt: new slab, table, Batimax pump

Current Status: Working

Recommendations:

- 1) Improve enclosure, shelter
- 2) Continue work with Well Committee



Photo September 2020

- Previous status: produce well, good flow, good shelter, has wall.
- Action taken: routine maintenance
- Current status: produce, good flow
- Recommendation: strengthen Social
- Note: infrastructure in a very good condition

## SEPT

- Previous status: produce,
- Action taken: partially rebuilt slab
- Current status: producing, good flow.
- Recommendation: assist well committee

## OCT

- Previous status: produce well, good flow, has shelter and wall.
- Action taken: routine maintenance
- Current status: produce, good flow
- Recommendation: strengthen Social



Lat: 19° 35' 49.75" S Long: 48° 51' 55.78" E

## MWP – 73

**Date Of Installation: July 2018**

Pump Type: 9-meter pump

Screen / Well Point: Steel

Pipe: Steel

Flow: 25 liters / minute

### Repairs & Maintenance

Nov 2019: Routine Maintenance, pump in need of repair

### February 2020:

Status on Arrival: Not Working

Action Taken: Completely Rebuilt: new slab, table, Batimax pump

Current Status: Working

Recommendations:

- 1) Improve enclosure, shelter
- 2) Continue work with Well Committee



Photo September 2020

## SEPT

- Previous status: produce,
- Action taken: routine maintenance
- Current status: producing, good flow.
- Recommendation: assist well committee

## OCT

- Previous status: produce well, good flow, has shelter and wall.
- Action taken: routine maintenance
- Current status: produce, good flow
- Recommendation: strengthen Social



# The Madagascar Water Project

MWP-74  
MAROSIKY

Lat: 19° 35' 23.74" S Long: 48° 52' 5.63" E

## MWP – 74

**Date Of Installation: July 2018**

Pump Type: Batimax

Screen / Well Point: Steel

Pipe: Steel

Flow: 25 liters / minute

### Repairs & Maintenance

Nov 2019: Routine Maintenance

### February 2020:

Status on Arrival: Working

Action Taken: Completely Rebuilt:  
new slab, table, Batimax pump

Current Status: Working

Recommendations:

- 1) Improve enclosure, shelter
- 2) Continue work with Well Committee



## SEPT

- Previous status: produce,
- Action taken: routine maintenance
- Current status: producing, good flow.
- Recommendation: assist well committee

## OCT

- Previous status: produce well, good flow, has shelter and wall.
- Action taken: routine maintenance
- Current status: produce, good flow
- Recommendation: strengthen Social
- Note: no shelter, not covered





MADAGASCAR  
WATER PROJECT

# The Madagascar Water Project

Lat: 19° 11' 42.27" S Long: 49° 0' 27.46" E

MWP-80  
ANTSIRANAMIHANANA

## MWP – 80

### Date Of Installation: June 2019

Pump Type: Batimax

Screen / Well Point: Steel

Pipe: Steel

Flow: 25 liters / minute

Table is experimental cement design

Water Quality at risk – two nearby wells are brackish

### Repairs & Maintenance

Nov 2019: Routine Maintenance

### February 2020:

Status on Arrival: Working

Action Taken: Routine Maintenance

Current Status: Working

Recommendations:

- 1) Build enclosure, shelter
- 2) Continue work with Well Committee



### SEPT

- Previous Status: Pump working
- Leather cup changed
- Final status: working well
- Well well maintained

### OCT

- Previous status: produce well
- Action taken: routine maintenance
- Current status: produce, good flow
- Recommendation: strengthen Social
- Note: cement stand base



# The Madagascar Water Project

MWP-81  
FENOARIVO

Lat: 20° 38' 21.88" S Long: 48° 31' 8.97" E

## MWP – 81

**Date Of Installation: September 2019**

Pump Type: Batimax

Screen / Well Point: Steel

Pipe: Steel

Flow: 25 liters / minute

Table is experimental cement design

**Pedestal: Cement stand**

### Repairs & Maintenance

**Nov 2019:** Routine Maintenance

**Sept 2020:** Changing with new XL pump



October 2021

### •Previous Status:

- Not working due to physical failure of pump, just broken one day before
- Well maintained and well cared

### •Action Taken:

- Replacement of old pump to new Standard pump.
- Painting cement stand cover

### •Current Status:

*Working good*

Photo Oct 2021





# The Madagascar Water Project

MWP-82  
FENOARIVO

Lat: 20° 38' 28.86" S Long: 48° 31' 8.73" E

## MWP – 82

**Date Of Installation: September 2019**

Pump Type: Batimax  
Screen / Well Point: Steel  
Pipe: Steel  
Flow: 25 liters / minute  
**Pedestal: Cast iron**

### Repairs & Maintenance

**Nov 2019:** Routine Maintenance  
**Feb 2020:** Routine Maintenance  
**Sept 2020:** Changing with new XL pump, Complete rebuild with new table



Photo Oct 2021

October 2021

### •Previous Status:

- Pump tired but still producing with local home made leather cup
- *Well maintained and well cared*

### •Action Taken:

*Replacement of old pump to new Standard pump, new pedestal and new check valve*

### •Current Status:

*Working good*

Lat: 20° 37' 29.38" S Long: 48° 30' 17.81" E

## MWP – 83

**Date Of Installation: August 2019**

Pump Type: Batimax

Screen / Well Point: Steel

Pipe: Steel

Flow: 20 liters / minute

**Current pedestal: Wood table**

### Repairs & Maintenance

Nov 2019: Routine Maintenance

### February 2020:

Action Taken: Routine Maintenance

### Sept 2020:

Changing ump with new XL Pump

Complete rebuild with new table



Photo Oct 2021

### Sept 2021:

#### •Previous Status:

*Not Working, problem of tired pump (XL Pump)*

*The pump has been broken for more than 4 months*

#### •Action Taken:

- *Changing old pump with New Standard pump,*
- *Renewed partially wood table since the other are still in good condition*

#### •Current Status:

*Working good*





# The Madagascar Water Project

MWP-84  
AMBODISANINA

Lat: 20° 37' 37.54" S Long: 48° 30' 35.66" E

## MWP – 84

**Date Of Installation: August 2019**

Pump Type: Batimax

Screen / Well Point: Steel

Pipe: Steel

Low Flow: 15 liters / minute

Water slightly brown, no odor

**Current pedestal: Wood table**

### Repairs & Maintenance

Nov 2019: Routine Maintenance

February 2020: Routine  
Maintenance

Sept 2020: Changing new XL  
pump, Complete rebuild with new  
table



Photo Oct 2021

Sept 2021:

#### •Previous Status:

- Not Working, problem of tired pump (XL Pump)
- The pump has been broken for more than 4 months
- Pump well cared
- Water slightly brown, no odor

#### •Action Taken:

- Changing old pump with New Standard pump,
- Renewed partially wood table since the other are still in good condition
- Water still slightly brown, no odor

#### •Current Status:

Working good

Lat: 20° 37' 40.97" S Long: 48° 30' 54.03" E

## MWP – 85

**Date Of Installation: August 2019**

Pump Type: Batimax

Screen / Well Point: Steel

Pipe: Steel

Low Flow: 15 liters / minute

**Pedestal: Cast iron**

### Repairs & Maintenance

Nov 2019: Routine Maintenance

February 2020: Routine Maintenance

Sept 2020: Changing new XL pump, Complete rebuild with new table



October 2021

**•Previous Status:**

- Well not producing since the XL pump was broken
- Well maintained and well cared

**•Action Taken:**

Replacement of old pump to new Standard pump, new pedestal and new check valve

**•Current Status:**

Working good



Lat: 20° 37' 46.46" S Long: 48° 31' 1.53" E

## MWP – 86

**Date Of Installation:** August 2019

Pump Type: Rebuilt Batimax

Screen / Well Point: Steel

Pipe: Steel

Low Flow: 15 liters / minute

**Pedestal:** Cast iron

### Repairs & Maintenance

Nov 2019: Routine Maintenance

February 2020: Routine Maintenance

Sept 2020: Changing new XL pump, Complete rebuild with new table



Photo Oct 2021

October 2021

#### •Previous Status:

- Well working, with its original leather cup, only the piston is about to break
- *Well maintained and well cared*

#### •Action Taken:

- *Replacement of the piston, re-using the same previous pump*
- *Complete rebuild with Cast iron pedestal*

#### •Current Status:

*Working good , flow improving*

#### ➤ **Recommendation:**

*Pump needs to be renewed later*



# The Madagascar Water Project

MWP-87  
AMPAHOMANITRA

Lat: 20° 37' 52.74" S Long: 48° 30' 54.93" E

## MWP – 87

**Date Of Installation: August 2019**

Pump Type: Batimax

Screen / Well Point: Steel

Pipe: Steel

Low Flow: 15 liters / minute

Water slightly brown, no odor

**Pedestal: Cast iron**

### Repairs & Maintenance

Nov 2019: Routine Maintenance

February 2020: Routine Maintenance

Sept 2020: Complete rebuilt with new XL pump,  
new table



October 2021

### •Previous Status:

- Well working, with its original leather cup,
- *Well maintained and well cared*

### •Action Taken:

- *Replacement of old pump with new Standard pump*
- *Complete rebuild with Cast iron pedestal*

### •Current Status:

*Working good, Water clearer*

Photo Oct 2021



Lat: 20° 20' 50.84" S Long: 48° 34' 35.35" E

## MWP – 88

**Date Of Installation: August 2019**

Pump Type: Batimax

Screen / Well Point: Steel

Pipe: Steel

Flow: 25 liters / minute

**Pedestal: Cast iron**

### Repairs & Maintenance

Nov 2019: Routine Maintenance

February 2020: Routine Maintenance

Sept 2020: Complete rebuilt with new XL pump, new table



Photo Oct 2021

October 2021

### •Previous Status:

- Well working, with some local home made stopper plug and leather cup,
- *Well maintained and well cared*

### •Action Taken:

- *Replacement of old pump with new Standard pump*
- *Complete rebuild with Cast iron pedestal*

### •Current Status:

*Working good*



# The Madagascar Water Project

MWP-89  
AMBALAVONTAKA

Lat: 20° 20' 47.43" S Long: 48° 34' 38.32" E

## MWP – 89

**Date Of Installation: August 2019**

Pump Type: Batimax

Screen / Well Point: Steel

Pipe: Steel

Flow: 25 liters / minute

**Pedestal: Cast iron**

### Repairs & Maintenance

Nov 2019: Routine Maintenance

February 2020: Routine Maintenance

Sept 2020: Complete rebuilt with new XL pump, new table



Photo Oct 2021

### October 2021

#### •Previous Status:

- Well working, with some local home made stopper plug and leather cup,
- *Well maintained and well cared*

#### •Action Taken:

- *Replacement of old pump with new Standard pump*
- *Complete rebuild with Cast iron pedestal*

#### •Current Status:

*Working good*





# The Madagascar Water Project

MWP-90  
AMBALAVONTAKA

Lat: 20° 20' 55.36" S Long: 48° 34' 32.49" E

## MWP – 90

**Date Of Installation:** September 2019

Pump Type: Batimax

Screen / Well Point: Steel

Pipe: Steel

Flow: 25 liters / minute

**Pedestal:** Cast iron

### Repairs & Maintenance

Nov 2019: Routine Maintenance

February 2020: Routine Maintenance

Sept 2020: Complete rebuilt with new XL pump, new table



Photo Oct 2021

October 2021

### •Previous Status:

- Well working, with some local home made stopper plug and leather cup,
- *Well maintained and well cared*

### •Action Taken:

- *Replacement of old pump with new Standard pump*
- *Complete rebuild with Cast iron pedestal*

### •Current Status:

*Working good*

Lat: 20° 32' 24.64" S Long: 48° 32' 59.38" E

## MWP – 91

**Date Of Installation: September 2019**

Pump Type: Batimax

Screen / Well Point: Steel

Pipe: Steel

Flow: 25 liters / minute

**Pedestal: Cast iron**

### Repairs & Maintenance

Nov 2019: Routine Maintenance

February 2020: Routine Maintenance

Sept 2020: Complete rebuilt with new XL pump, new table



October 2021:

**•Previous Status:**

*Not Working, the piston is loose, leather cup broken  
The pump has been broken for more than 4 months*

**•Action Taken:**

- *Changing old pump with New Standard pump*
- *Changing wood table to cast iron pedestal*

**•Current Status:**

*Working good*





# The Madagascar Water Project

MWP-92  
AMBINANIN'NY SAKALEONA

Lat: 20° 32' 22.61" S Long: 48° 32' 58.84" E

## MWP – 92

**Date Of Installation:** September 2019

Pump Type: Batimax

Screen / Well Point: Steel

Pipe: Steel

Flow: 25 liters / minute

**Pedestal: Cast iron**

### Repairs & Maintenance

Nov 2019: Routine Maintenance

February 2020: Routine Maintenance

Sept 2020: Complete rebuilt with new XL pump, new table



Photo Oct 2021

October 2021:

#### •Previous Status:

*Not Working, the piston is loose, leather cup broken The pump has been broken for more than 4 months*

#### •Action Taken:

- Changing old pump with New Standard pump
- Changing wood table to cast iron pedestal

#### •Current Status:

*Working good*





# The Madagascar Water Project

MWP-93  
AMBINANIVOLO

Lat: 20° 24' 59.89" S Long: 48° 34' 42.80" E

## MWP – 93

**Date Of Installation: September 2019**

Pump Type: Batimax  
Screen / Well Point: Steel  
Pipe: Steel

Flow: 25 liters / minute

**Current pedestal: Wood table**

### Repairs & Maintenance

Nov 2019: Routine Maintenance  
February 2020: Routine Maintenance  
Sept 2020: Complete rebuilt with new XL pump, new table



Photo Oct 2021

October 2021

### •Previous Status:

*Working but less flow, water with odor and black coloration. It is hard to pump and the head pump is tired. So people do not use it much.*

### •Action Taken:

- *Cleaning the well point screen by rotating the pipe, but still produce the same black and stink water.*
- *Doing complete rebuilt by changing old pump to new Standard pump, check valve and renewing wood table.*

### •Current Status:

*Working but still hard to pump, with black and stink water.*

**Recommendation:** *Let's wait and see after the water table rise*





MADAGASCAR  
WATER PROJECT

# The Madagascar Water Project

MWP-94  
NOSINDRAVINA

Lat: 20° 28' 53.93" S Long: 48° 34' 14.22" E

## MWP – 94

**Date Of Installation: September 2019**

Pump Type: Batimax

Screen / Well Point: Steel

Pipe: Steel

Flow: 25 liters / minute

**Pedestal: Cast iron**

### Repairs & Maintenance

Nov 2019: Routine Maintenance

Sept 2020: Routine Maintenance



Photo Oct 2021

October 2021

### •Previous Status:

*Not Working, the piston is loose, leather cup broken The pump has been broken for more than 4 months. Well no fence, no roof.*

### •Action Taken:

- Changing old pump with New Standard pump
- Changing wood table to cast iron pedestal

### •Current Status:

*Working good*

**Recommendation:** *Encourage users to build shelter*



# The Madagascar Water Project

MWP-95  
SAHAFARY

Lat: 20° 31' 38.72" S Long: 48° 29' 31.75" E

## MWP – 95

**Date Of Installation:** September 2019

Pump Type: Batimax  
Screen / Well Point: Steel  
Pipe: Steel  
Flow: 25 liters / minute  
**Pedestal: Cast iron**

### Repairs & Maintenance

Nov 2019: Routine Maintenance  
February 2020: Routine Maintenance  
Sept 2020: Complete rebuilt with new XL pump, new table



Photo Oct 2021

➤ [October 2021](#)

- **Status on Arrival:**  
*Working but weak production due to tired pump*
- **Action Taken:**  
*Complete rebuilt with new Standard pump, new cast iron pedestal*
- **Current Status:**  
*Working good*
- **Note:**  
*Well cared*



Lat: 20° 33' 50.39" S Long: 48° 30' 3.98" E

## MWP – 96

**Date Of Installation: September 2019**

Pump Type: Batimax

Screen / Well Point: Steel

Pipe: Steel

Flow: 20 liters / minute

### Repairs & Maintenance

**Nov 2019:** Routine Maintenance

**February 2020:** Routine Maintenance

**Sept 2020:** Changing to new XL Pump



### ➤ [October 2021](#)

#### •Status on Arrival:

*The well has not been working for more than 3months*

#### • Action Taken:

*- We were starting to change the stopper plug, but did not work. Then, changed the pump to new, but still not producing. Then, cleaned the existing check valve, re-put it on its place, but still not working. Then put a new valve, but still not producing, while pumping, the handle pushed back and it is very hard to pump.*

*So we pulled out the entire BHA, and drilled a new replacement well, with a number MWP147.*

*- **Note: the well point is completely plugged with hard black sand.***

#### • Recommendation:

*Abandon MWP96 and drill new well replacement*



# The Madagascar Water Project

MWP-97  
ANDONAKA

Lat: 20° 31' 33.42" S Long: 48° 31' 1.99" E

## MWP – 97

**Date Of Installation: September 2019**

Pump Type: Batimax

Screen / Well Point: Steel

Pipe: Steel

Flow: 25 liters / minute

**Pedestal: Cast iron**

### Repairs & Maintenance

**Nov 2019:** Routine Maintenance

**February 2020:** Routine Maintenance

**Sept 2020:** Changing to new XL Pump



Photo Oct 2021

October 2021

### •Previous Status:

- Well working, with some local home made stopper plug and leather cup,
- *Well maintained and well cared*

### •Action Taken:

- *Replacement of old pump with new XL pump*
- *Complete rebuild with Cast iron pedestal*

### •Current Status:

*Working good*





MADAGASCAR  
WATER PROJECT

# The Madagascar Water Project

MWP-98  
ANDONAKA

Lat: 19° 4' 31.42" S Long: 48° 31' 5.04" E

## MWP – 98

**Date Of Installation: September 2019**

Pump Type: Batimax

Screen / Well Point: Steel

Pipe: Steel

Flow: 25 liters / minute

**Pedestal: Cast iron**

### Repairs & Maintenance

**Nov 2019:** Routine Maintenance

**February 2020:** Routine Maintenance

**Sept 2020:** Changing to new XL Pump



Photo Oct 2021

October 2021

### •Previous Status:

- Well working, with some local home made stopper plug and leather cup,
- *Well maintained and well cared*

### •Action Taken:

- *Replacement of old pump with new Standard pump*
- *Complete rebuild with Cast iron pedestal*

### •Current Status:

*Working good*



MADAGASCAR  
WATER PROJECT

# The Madagascar Water Project

MWP-99  
AMBAHY

Lat: 20° 46' 20.61" S Long: 48° 28' 36.79" E

## MWP – 99

**Date Of Installation:** August 2019

Pump Type: Batimax

Screen / Well Point: Steel

Pipe: Steel

Flow: 20 liters / minute

Water slightly brown, slightly odorous

**Pedestal:** Cast iron

### Repairs & Maintenance

**Nov 2019:** Routine Maintenance

**February 2020:** Routine Maintenance

**Sept 2020:** Changing to new XL Pump



Photo Oct 2021

October 2021

### •Previous Status:

- Well not working for 1 month
- *Water with dark color and with odor*

### •Action Taken:

- *Replacement of old pump with new Standard pump*
- *Complete rebuild with Cast iron pedestal*

### •Current Status:

*Working good, but still dark color and odor*

### Note:

*Not many people use it since the water is dark with odor, and the well is not well cared.*



Lat: 20° 46' 24.10" S Long: 49° 3' 23.03" E

## MWP – 100

**Date Of Installation: August 2019**

Pump Type: Batimax

Screen / Well Point: Steel

Pipe: Steel

Low Flow: 15 liters / minute

**Pedestal: Cast iron**

### Repairs & Maintenance

**Nov 2019:** Routine Maintenance

**February 2020:** Routine Maintenance

**Sept 2020:** Changing to new XL Pump



October 2021

### •Previous Status:

- Well not working for 3 months due to physical failure of the pump

- The well was walled inside a private house.

*Note: It looks like the house close to the well is the only one who take care of the well, by putting roof and wall, and finding solution to fix the pump when it is broken. Although the other people was claiming with the behavior of the responsible, and his attitude, such as locking in his yard the well.*

### •Action Taken:

- A meeting with all users was held, clarifying the social issue.

- Replacement of old pump with new Standard pump

- Complete rebuild with Cast iron pedestal

### •Current Status:

- Working good,

- The responsible of the well opened up the wall to the public users, and everyone committed to participate in any expenses related to the well.





# The Madagascar Water Project

**MWP-101**  
**ANDRANOTSINDRANO**

Lat: 19° 4' 31.42" S Long: 48° 30' 11.09" E

## MWP – 101

**Date Of Installation: October 2019**

Pump Type: Batimax

Screen / Well Point: Steel

Pipe: Steel

Flow: 20 liters / minute

**Pedestal: Cast iron**

### Repairs & Maintenance

**Nov 2019:** Routine Maintenance

**February 2020:** Routine Maintenance

**Sept 2020:** Changing to new XL Pump



Photo Oct 2021

October 2021:

### •Previous Status:

*Not Working, the piston is loose, leather cup broken. The pump has been broken for more than 4 months.*

### •Action Taken:

- Changing old pump with New Standard pump
- Changing wood table to cast iron pedestal

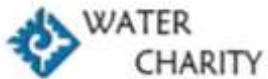
### •Current Status:

*Working good*





MADAGASCAR  
WATER PROJECT



WATER  
CHARITY

# The Madagascar Water Project

Lat: 20° 42' 6.16" S Long: 48° 28' 17.32" E

MWP-102  
ANALANOLONA

## MWP – 102

**Date Of Installation:** October 2019

Pump Type: Batimax

Screen / Well Point: Steel

Pipe: Steel

Flow: 20 liters / minute

**Pedestal:** Cast iron

### Repairs & Maintenance

**Nov 2019:** Routine Maintenance

**February 2020:** Routine Maintenance

**Sept 2020:** Changing to new XL Pump



Photo Oct 2021

October 2021

### •Previous Status:

- Well not working for 3 months due to physical failure of the pump

### •Action Taken:

- Replacement of old pump with new Standard pump
- Complete rebuild with Cast iron pedestal

### •Current Status:

- Working good,





# The Madagascar Water Project

MWP-103  
NOSY VARIKA

Lat: 20° 35' 6.49" S Long: 48° 32' 1.48" E

## MWP – 103

**Date Of Installation:** October 2019

Pump Type: Batimax

Screen / Well Point: Steel

Pipe: Steel

Flow: 25 liters / minute

**Pedestal:** Cast iron

### Repairs & Maintenance

**Nov 2019:** Routine Maintenance

**February 2020:** Routine Maintenance

**Sept 2020:** Changing to new XL Pump



Photo Oct 2021

October 2021

### •Previous Status:

- Well not working for 3 months due to physical failure of the pump

### •Action Taken:

- Replacement of old pump with new Standard pump
- Complete rebuild with Cast iron pedestal

### •Current Status:

- Working good,





# The Madagascar Water Project

MWP-104  
ANDRANOTSARA SOUTH

Lat: 20° 8' 32.90" S Long: 48° 42' 26.93" E

## MWP – 104

**Date Of Installation: October 2019**

Pump Type: Batimax

Screen / Well Point: Steel

Pipe: Steel

Flow: 25 liters / minute

**Repairs & Maintenance**

None

**February 2020:**

Status on Arrival: Working

Action Taken: Routine Maintenance

Current Status: Working

Recommendations:

- 1) Continue work with Well Committee



Oct 2019

**SEPT/OCT**

•Status on Arrival: working, leather cup still in good condition

•Action Taken: routine maintenance

•Current Status: Working

•Recommendation:  
-Strengthen social

Note: table, pump still last 1.5 more years



# The Madagascar Water Project

MWP-105  
AMBARIMALEMY

Lat: 19° 27' 34.11" S Long: 48° 55' 34.88" E

## MWP – 105

**Date Of Installation: October 2019**

Pump Type: Batimax

Screen / Well Point: Steel

Pipe: Steel

Flow: 20 liters / minute

Water slightly red, slight odor

**Pedestal: Cast iron**

### Repairs & Maintenance

**Nov 2019:** Routine Maintenance

**February 2020:** Routine Maintenance

**Sept 2020:** Routine Maintenance



Photo Oct 2021

October 2021

#### •Previous Status:

- Well working, with its original leather cup,
- *Well maintained and well cared*
- *Pump still in a very good condition*

#### •Action Taken:

- *Routine maintenance*
- *Clean and check the check valve*
- *Changing wood table to Pedestal cast iron*

#### •Current Status:

*Working good*





# The Madagascar Water Project

MWP-106  
AMBALABE

Lat: 19° 29' 34.02" S Long: 48° 54' 50.41" E

## MWP – 106

**Date Of Installation: November 2019**

Pump Type: Batimax

Screen / Well Point: Steel

Pipe: Steel

Flow: 25 liters / minute

**Pedestal: Cast iron**

### Repairs & Maintenance

**February 2020:** Routine Maintenance

**Sept 2020:** Routine Maintenance



Photo Oct 2021

October 2021

### •Previous Status:

- Well working but pump starting tired, top pump cover start to loose, easy stroke, moderate flow but continue.
- Wood rotten
- *Well maintained and well cared*

### •Action Taken:

- *Complete rebuild with new Standard pump and pedestal cast iron*

### •Current Status:

*Working good*



# The Madagascar Water Project

**MWP-107**  
**AMBODISAKOANA**

Lat: 19° 28' 20.13" S Long: 48° 54' 48.7" E

## MWP – 107

**Date Of Installation: November 2019**

Pump Type: Batimax

Screen / Well Point: Steel

Pipe: Steel

Flow: 25 liters / minute

### Repairs & Maintenance

None

### February 2020:

Status on Arrival: Working

Action Taken: Routine Maintenance

Current Status: Working

Recommendations:

- 1) Continue work with Well Committee



Photo October 2020

### SEPT

- Status on Arrival: Working
- Action Taken: routine maintenance
- Current Status: Working

### OCT

- Previous status: produce well, good flow, half sheltered, walled
- Action taken: routine maintenance
- Current status: produce, good flow
- Recommendation: strengthen Social





# The Madagascar Water Project

**MWP-108**  
**AMBODISAKOANA**

Lat: 19° 28' 34.42" S Long: 48° 54' 45.14" E

## MWP – 108

**Date Of Installation: November 2019**

Pump Type: Batimax

Screen / Well Point: Steel

Pipe: Steel

Flow: 25 liters / minute

### Repairs & Maintenance

None

### February 2020:

Status on Arrival: Working

Action Taken: Routine Maintenance

Current Status: Working

### Recommendations:

- 1) Improve enclosure, shelter
- 2) Continue work with Well Committee



Photo October 2020

### SEPT

- Status on Arrival on Sept: Not working due to leather cup problem
- Action Taken: routine maintenance
- Current Status: Working

### OCT

- Previous status: produce well, good flow, good shelter, good wall
- Action taken: routine maintenance
- Current status: produce, good flow
- Recommendation: strengthen Social
- Note: table need to be changed after 6 months
- Recommendation:
  - Strengthen social
  - Rebuild shelter

Lat: 19° 28' 7.04" S Long: 48° 54' 58.04" E

## MWP – 109

**Date Of Installation: November 2019**

Pump Type: Batimax  
Screen / Well Point: Steel  
Pipe: Steel  
Flow: 25 liters / minute

**Repairs & Maintenance**  
None

**February 2020:**  
Status on Arrival: Working

Action Taken: Routine Maintenance

Current Status: Working

Recommendations:  
1) Continue work with Well Committee



Photo October 2020

## SEPT

- Status on Arrival on Sept: Not working due to leather cup problem
- Action Taken: routine maintenance
- Current Status: Working

## OCT

- Previous status: produce well, good flow, good shelter, good wall
- Action taken: routine maintenance
- Current status: produce, good flow
- Recommendation: strengthen Social
- Note: infrastructure in a good condition





# The Madagascar Water Project

**MWP-110**  
**SERANANDAVITRA**

Lat: 19° 31' 47.53" S Long: 48° 53' 11.82" E

## MWP – 110

**Date Of Installation: November 2019**

Pump Type: Batimax  
Screen / Well Point: Steel  
Pipe: Steel  
Flow: 25 liters / minute

**Repairs & Maintenance**  
None

**February 2020:**  
Status on Arrival: Working

Action Taken: Routine  
Maintenance

Current Status: Working

Recommendations:

- 1) Continue work with Well Committee



Photo October 2020

### SEPT

- Status on Arrival: Working good, leather cup still in good condition
  - Action Taken: routine maintenance
  - Current Status: Working
  - Recommendation:
    - Strengthen social
- Note: Nothing to point, table, pump still last 1.5 more years, left 1 spare of leather cup

### OCT

- Previous status: produce well, good flow, good shelter, good wall
  - Action taken: routine maintenance
  - Current status: produce, good flow
  - Recommendation: strengthen Social
- Note: infrastructure in a good condition



# The Madagascar Water Project

**MWP-111**  
**SERANANDAVITRA**

Lat: 19° 31' 41.47" S Long: 48° 53' 15.04" E

## MWP – 111

**Date Of Installation: November 2019**

Pump Type: Batimax

Screen / Well Point: Steel

Pipe: Steel

Flow: 25 liters / minute

**Repairs & Maintenance**  
None

**February 2020:**

Status on Arrival: Working

Action Taken: Routine Maintenance

Current Status: Working

Recommendations:

- 1) Continue work with Well Committee



### SEPT

- Status on Arrival: Not working due to stopper plug problem
- Action Taken: change stopper plug, routine maintenance
- Current Status: Working

### OCT

- Previous status: produce well, good flow, good shelter, good wall
- Action taken: routine maintenance
- Current status: produce, good flow
- Recommendation: strengthen Social
- Note: infrastructure in a good condition

Note: table, pump still last 1.5 more years



Lat: 19° 31' 43.56" S Long: 48° 53' 45.45" E

## MWP – 112

**Date Of Installation: November 2019**

Pump Type: Batimax

Screen / Well Point: Steel

Pipe: Steel

Flow: 25 liters / minute

**Pedestal: Cast iron**

### Repairs & Maintenance

**February 2020:** Routine Maintenance

**Sept 2020:** Routine Maintenance



Photo Oct 2021

October 2021

**•Previous Status:**

- Well working but pump tired
- Well maintained and well cared

**•Action Taken:**

- Complete rebuild with new XL pump and new pedestal cast iron, cement slab

**•Current Status:**

*Working good*



# The Madagascar Water Project

**MWP-113**  
AMPANALANA VATOMANDRY

Lat: 19° 22' 55.65" S Long: 48° 57' 20.03" E

## MWP – 113

**Date Of Installation: November 2019**

Pump Type: Batimax  
Screen / Well Point: Steel  
Pipe: Steel  
Flow: 25 liters / minute

**Repairs & Maintenance**  
None

**February 2020:**  
Status on Arrival: Working

Action Taken: Routine Maintenance

Current Status: Working

Recommendations:

- 1) Continue work with Well Committee



## SEPT

- Status on Arrival: Working good
- Action Taken: change stopper plug, routine maintenance
- Current Status: Working

## OCT

- Previous status: produce well, good flow, good shelter, has wall.
- Action taken: routine maintenance
- Current status: produce, good flow
- Recommendation: strengthen Social

Note: Good flow, table, pump still last 1.5 more years, left 1 spare of leather cup



Lat: 19° 24' 21.14" S Long: 48° 56' 57.44" E

## MWP – 114

**Date Of Installation: November 2019**

Pump Type: Batimax  
Screen / Well Point: Steel  
Pipe: Steel  
Flow: 25 liters / minute

**Repairs & Maintenance**  
None

**February 2020:**  
Status on Arrival: Working

Action Taken: Routine  
Maintenance

Current Status: Working

Recommendations:

- 1) Improve enclosure, shelter
- 2) Continue work with Well Committee



Photo October 2020

## SEPT

- Status on Arrival: Working
- Action Taken: change stopper plug, routine maintenance
- Current Status: Working

## OCT

- Previous status: produce well, good flow, has shelter, has wall.
- Action taken: routine maintenance
- Current status: produce, good flow
- Recommendation: strengthen Social
- Note: infrastructure in a good condition, table, pump still last 1.5 more years





MADAGASCAR  
WATER PROJECT

# The Madagascar Water Project

MWP-115  
MAINTINANDRY

Lat: 19° 25' 20.87" S Long: 48° 56' 5.98" E

Sponsored By  
Tori Rittelmeyer

## MWP – 115

**Date Of Installation: November 2019**

Pump Type: Rebuilt Batimax

Screen / Well Point: Steel

Pipe: Steel

Flow: 20 liters / minute

### Repairs & Maintenance

None

### February 2020:

Status on Arrival: Working

Action Taken: Routine Maintenance

Current Status: Working

Recommendations:

- 1) Change Pump
- 2) Continue work with Well Committee

SEPT



d, top of

lug,  
tenance

ood flow,

ice

ow

ocial

ondition

ore years,





MADAGASCAR  
WATER PROJECT

# The Madagascar Water Project

MWP-116  
MAINTINANDRY

Lat: 19° 25' 41.86" S Long: 48° 55' 44.63" E

## MWP – 116

**Date Of Installation: November 2019**

Pump Type: Rebuilt Batimax  
Screen / Well Point: Steel  
Pipe: Steel  
Flow: 20 liters / minute

**Repairs & Maintenance**  
None

**February 2020:**

Status on Arrival: Working

Action Taken: Routine  
Maintenance

Current Status: Working

Recommendations:

- 1) Change Pump
- 2) Continue work with Well Committee



Photo October 2020

SEPT

- Status on Arrival: Working good
  - Action Taken: change stopper plug, routine maintenance
  - Current Status: Working
  - Recommendation:  
-Strengthen social
- Note: Fair flow, table, pump still last 1.5 more years, left 1 spare of leather cup

OCT

Previous status: produce well, good flow, shelter, wall

- Action taken: routine maintenance
  - Current status: produce, good flow
  - Recommendation: strengthen Social
- Note: infrastructure in a good condition



# The Madagascar Water Project

**MWP-117**  
**MANAKAMBAHINY**

Lat: 19° 15' 21.42" S Long: 48° 59' 13.18" E

## MWP – 117

**Date Of Installation: November 2019**

Pump Type: Rebuilt Batimax

Screen / Well Point: Steel

Pipe: Steel

Flow: 25 liters / minute

Replaces MWP-39, plugged at filter

### Repairs & Maintenance

None

### February 2020:

Status on Arrival: Working

Action Taken: Routine Maintenance

Current Status: Working

Recommendations:

- 1) Improve enclosure, shelter
- 2) Change Pump
- 3) Continue work with Well Committee



### SEPT

- Status on Arrival: Working good
- Action Taken: routine maintenance
- Current Status: Working
- Recommendation:
  - Strengthen social
  - Change pump next time

### OCT

- Previous status: produce well, good flow
- Action taken: routine maintenance
- Current status: produce, good flow
- Recommendation: strengthen Social
- Note: pump need to be changed after 3months, table will last more than 1year





# The Madagascar Water Project

**MWP-118**  
**KALOMALALA**

Lat: 18° 59' 6.50" S Long: 49° 5' 33.23" E

## MWP – 118

**Date Of Installation: November 2019**

Pump Type: Batimax  
Screen / Well Point: Steel  
Pipe: Steel

Replaced MWP-19, filter plugged  
Flow: 25 liters / minute

**Repairs & Maintenance**  
None

**February 2020:**  
Status on Arrival: Working

Action Taken: Routine Maintenance

Current Status: Working

Recommendations:

- 1) Continue work with Well Committee



Photo October 2020

## SEPT

- Status on Arrival: Working good
- Action Taken: routine maintenance
- Current Status: Working
- Recommendation:  
-Strengthen social

## OCT

- Status on Arrival: Working good
- Action Taken: routine maintenance
- Current Status: Working
- Recommendation:  
-Strengthen social

Note: Table, pump still last 2 more years

## MWP – 120

**Date Of Installation: November 2020**

Pump Type: XL Pump

Screen / Well Point: Steel

Pipe: Steel

Flow: 25 liters / minute

Recommendations:

- 1) Enclosure, shelter
- 2) Continue work with Well Committee





## MWP – 121

**Date Of Installation: November 2020**

Pump Type: XL Pump

Screen / Well Point: Steel

Pipe: Steel

Flow: 25 liters / minute

Recommendations:

- 1) Enclosure, shelter
- 2) Continue work with Well Committee



## MWP – 122

: November 2020

Pump Type: XL Pump

Screen / Well Point: Steel

Pipe: Steel

Flow: 25 liters / minute

Recommendations:

- 1) Enclosure, shelter
- 2) Continue work with Well Committee

**Date Of Installation: November 2020**

Pump Type: XL Pump

Screen / Well Point: Steel

Pipe: Steel

Flow: 25 liters / minute

Recommendations:

- 1) Enclosure, shelter
- 2) Continue work with Well Committee





## MWP – 123

**Date Of Installation: November 2020**

Pump Type: XL Pump

Screen / Well Point: Steel

Pipe: Steel

Flow: 25 liters / minute

Recommendations:

- 1) Enclosure, shelter
- 2) Continue work with Well Committee





## MWP – 124

**Date Of Installation: November 2020**

Pump Type: XL Pump

Screen / Well Point: Steel

Pipe: Steel

Flow: 25 liters / minute

Recommendations:

- 1) Enclosure, shelter
- 2) Continue work with Well Committee





## MWP – 125

**Date Of Installation: November 2020**

Pump Type: XL Pump

Screen / Well Point: Steel

Pipe: Steel

Flow: 25 liters / minute

Recommendations:

- 1) Enclosure, shelter
- 2) Continue work with Well Committee



## MWP – 126

**Date Of Installation: November 2020**

Pump Type: XL Pump

Screen / Well Point: Steel

Pipe: Steel

Flow: 25 liters / minute

Recommendations:

- 1) Enclosure, shelter
- 2) Continue work with Well Committee





## MWP – 127

**Date Of Installation: November 2020**

Pump Type: Rebuilt Batimax pump, XL Pump stand

Screen / Well Point: Steel

Pipe: Steel

Flow: 25 liters / minute

Recommendations:

- 1) Enclosure, shelter
- 2) Continue work with Well Committee





## MWP – 128

**Date Of Installation: November 2020**

Pump Type: Rebuilt Batimax pump, XL Pump stand

Screen / Well Point: Steel

Pipe: Steel

Flow: 25 liters / minute

Recommendations:

- 1) Enclosure, shelter
- 2) Continue work with Well Committee





## MWP – 129

**Date Of Installation: November 2020**

Pump Type: Rebuilt Batimax pump, XL Pump stand

Screen / Well Point: Steel

Pipe: Steel

Flow: 25 liters / minute

Recommendations:

- 1) Fresh water limited at 200Liters, then should be waiting until reservoir refilled
- 2) Enclosure, shelter
- 3) Continue work with Well Committee

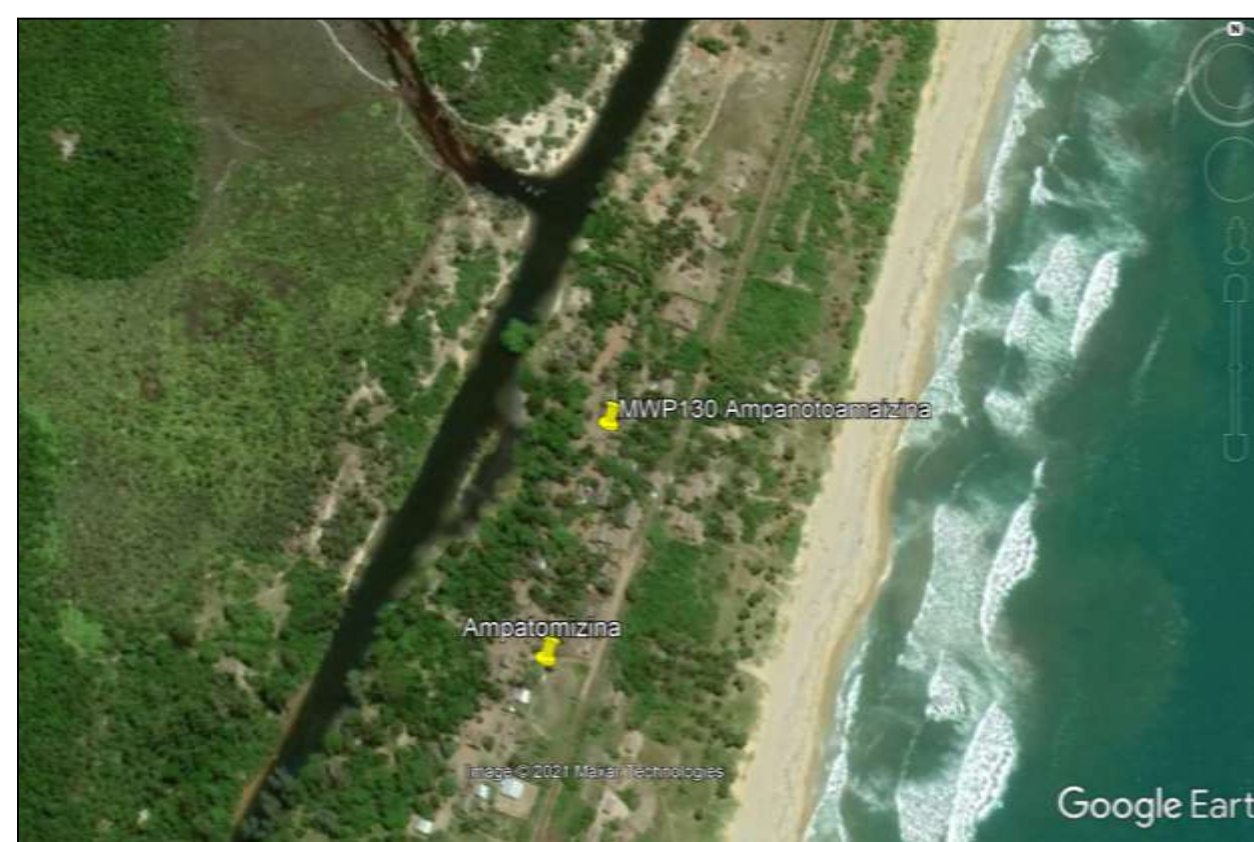
Note: first 200L flow Fresh, next salty





## AMPANOTOAMAIZINA

18°41'43.75"S / 49°12'26.42"E



- Region: Antsinanana
- District: Brickaville
- Commune: Ambinaninony
- Fonkotany: Ampanotoamaizina
- Number of population: 300

- Source of revenue: Fishing, Farming
- Source of water: Pangalana channel
- Existing water infrastructure: Any.
- MWP Well installed: MWP130

Date of installation: August 2021  
 Pump Type: XL Pump  
 Pedestal: Cast iron  
 Screen / Well Point: Steel  
 Pipe: Steel

WT: 5.0m BHA: WP+3+2+1 BGL: 5.2m  
 Flow: 25 liters per minute  
 Quality: Fresh



## TAMPINA

18°31'28.4"S / 49°16'46.55"E

Returning to Previous View ✕

Backspace will take you to previous views.  
Use control-backspace to redo.

Tampina

18°31'28.4"S / 49°16'46.55"E MWP131

Image © 2021 Maxar Technologies  
Image © 2021 CNES / Airbus



- Region: Antsinanana
- District: Brickaville
- Commune: Ambinaninony
- Fonkotany: Tampina
- Number of population: 600

- Source of revenue: Fishing, Farming
- Source of water: Canzee pump
- Existing water infrastructure: 5 Canzee pumps. 3 among them working
- MWP Well installed: MWP131

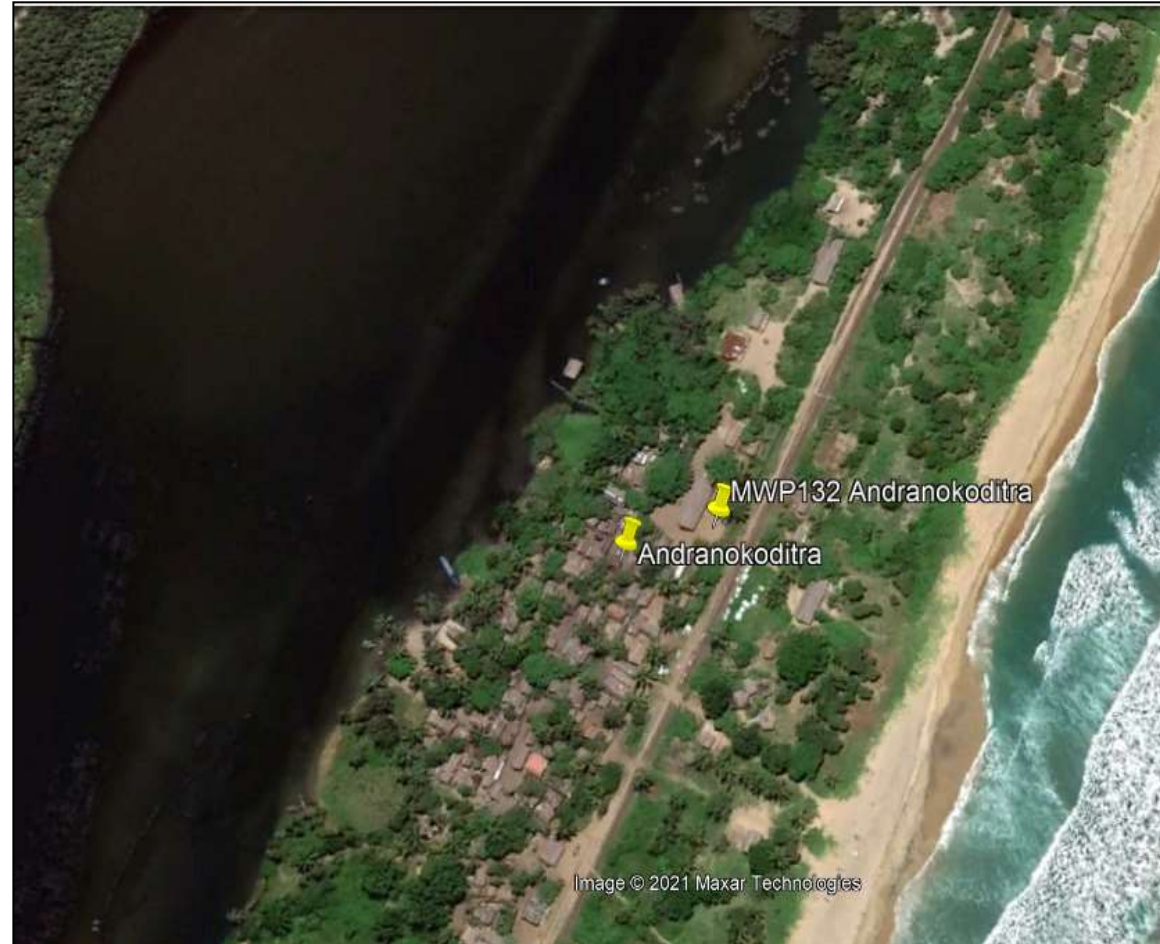
Date of installation: August 2021  
Pump Type: XL Pump  
Pedestal: Cast iron  
Screen / Well Point: Steel  
Pipe: Steel

WT: 4.0m BHA: WP+3+1+2 BGL: 6.2m  
Flow: 25 liters per minute  
Quality: Fresh



## ANDRANOKODITRA

18°35'49.37"S / 49°14'54.24"E



- Region: Antsinanana
- District: Brickaville
- Commune: Ambinaninony
- Fonkotany: Andranokoditra
- Number of population: 622

- Source of revenue: Fishing, Farming
- Source of water: Canzee pump, Pangalana channel
- Existing water infrastructure: 5 Canzee pumps, 2 among them working (People have to fetch water from the Pangalana during Sept Oct since water from Canzee pump become salty).
- MWP Well installed: MWP132

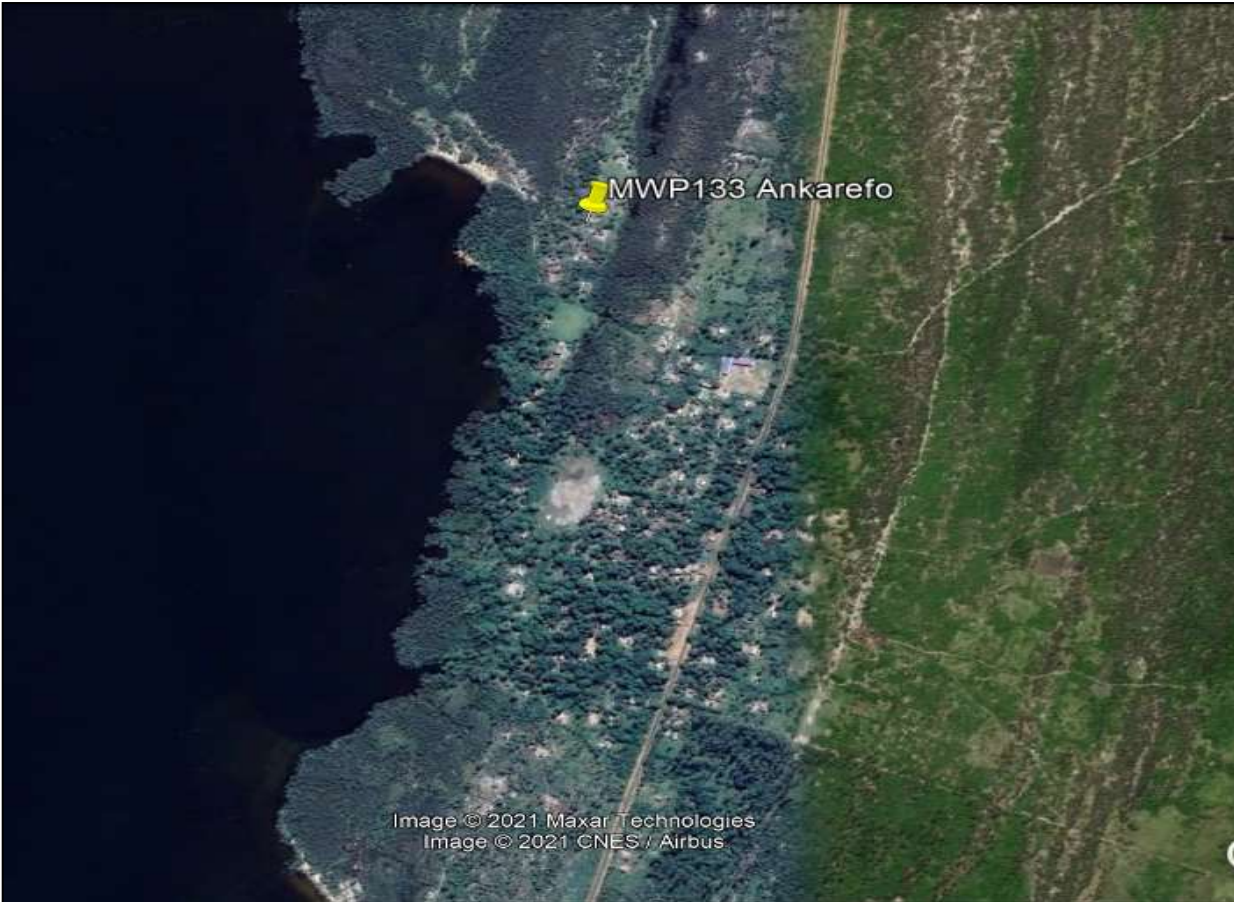
Date of installation: August 2021  
 Pump Type: XL Pump  
 Pedestal: Cast iron  
 Screen / Well Point: Steel  
 Pipe: Steel

WT: 2.6m BHA: WP+3+2 BGL: 5.2m  
 Flow: 25 liters per minute  
 Quality: Fresh



## ANKAREFO

18°24'01.8"S / 49°19'15.37"E



- Region: Antsinanana
- District: Brickaville
- Commune: Ambinaninony
- Fonkotany: Ankarefo
- Number of population: 180

- Source of revenue: Fishing, Farming
- Source of water: Private artisanal pump
- Existing water infrastructure: Any public infrastructure
- MWP Well installed: MWP133

Date of installation: August 2021  
Pump Type: XL Pump  
Pedestal: Cast iron  
Screen / Well Point: Steel  
Pipe: Steel

WT: 2.0m BHA: WP+2+2 BGL: 4.2m  
Flow: 25 liters per minute  
Quality: Fresh, bit brownie





## The Madagascar Water Project

MWP134 - MWP 135

### ANILAVINANY

(Lat 20°59'04.7"S Long 48°26'35.9"E)



Region: Vatovavy  
District: Mananjary  
Commune: Mahela  
Fonkotany: Anilavinany  
Number of Household: 413  
Number of population: 2,065

Source of revenue: Fishing, Farming  
Source of water: Open bucket well  
Existing water infrastructure: 4 canzee pumps, 1 Bucket well  
Wells installed by MWP: MWP134 - MWP135



## The Madagascar Water Project

MWP134

### ANILAVINANY

Lat 20°59'04.7"S Long 48°26'35.9"E

Date of Installation: September 2021

Pump Type: XL Pump

Pedestal: Cast iron

Screen / Well Point: Steel

Pipe: Steel

Flow: 25 liters per minute

Quality: Fresh



WT: 1.8m BHA: WP+3+2 BGL: 5.2m



# The Madagascar Water Project

MWP135

## ANILAVINANY

Lat 20°59'00.6"S Long 48°26'36.2"E

Date of Installation: September 2021

Pump Type: XL Pump

Pedestal: Cast iron

Screen / Well Point: Steel

Pipe: Steel

Flow: 25 liters per minute

Quality: Fresh



WT: 1.7m BHA: WP+2+1+1+1+0.5 BGL: 5.7m





**MADAGASCAR**  
WATER PROJECT

## The Madagascar Water Project

MWP136

### PANGALANA SUD

Lat 21°18'15.13"S Long 48°20'1.59"E



Region: Vatovavy  
District: Mananjary  
Commune: Ankatafana  
Fonkotany: Pangalana Sud  
Number of Household: 200  
Number of population: 1,629

Source of revenue: Fishing, Farming  
Source of water: Artisanal private wells, Canzee pumps  
Existing water infrastructure: 4 canzee pumps, Artisanal private wells  
Well installed by MWP: MWP136





## The Madagascar Water Project

MWP136

### PANGALANA SUD

Lat 21°18'15.13"S Long 48°20'1.59"E

Date of Installation: September 2021

Pump Type: XL Pump

Pedestal: Cast iron

Screen / Well Point: Steel

Pipe: Steel

Flow: 25 liters per minute

Quality: Fresh



WT: 2.2m BHA: WP+3+2 BGL: 5.2m





## AMBALAVONTAKA

Lat 21°19'31.6"S Long 48°19'38.9"E



Region: Vatovavy  
District: Mananjary  
Commune: Ankatafana  
Fonkotany: Ambalavontaka  
Number of Household: 270  
Number of population: 2,400  
Source of revenue: Fishing, Farming

Source of water: Pangalana  
Existing water infrastructure: 4 broken canzee pumps  
Wells installed by MWP: MWP137 - MWP138



## AMBALAVONTAKA

Lat 21°19'31.6"S Long 48°19'38.9"E

Date of Installation: September 2021  
Pump Type: XL Pump  
Pedestal: Cast iron  
Screen / Well Point: Steel  
Pipe: Steel  
Flow: 25 liters per minute  
Quality: Fresh



WT: 2.0m BHA: WP+3+2 BGL: 5.2m



### AMBALAVONTAKA

Lat 21°19'28.2"S Long 48°19'39.2"E



Date of Installation: September 2021

Pump Type: XL Pump

Pedestal: Cast iron

Screen / Well Point: Steel

Pipe: Steel

Flow: 25 liters per minute

Quality: Fresh

WT: 1.8m BHA: WP+3+1 BGL: 4.2m

Note: Drill until WT1.8m, settled BHA WP+3+IC+2, hammered/turned until major obstacle at 5.0BGL, Test but hard to pump, handle pushed back while pumping, hammered out, turned, changing 2m pipe to 1m, lifted up and Tested every 20cm, finally BHA: WP+3+1, good production with Fresh water. Note: No check valve because Check valve blocked by the Pedestal.

## MAHELA

Lat 20°58'09.9"S Long 48°26'29.9"E



**Region:** Vatovavy  
**District:** Mananjary  
**Commune:** Mahela  
**Fonkotany:** Mahela  
**Number of Household:** 587  
**Number of population:** 2,900

**Source of revenue:** Fishing, Farming  
**Source of water:** Open bucket well  
**Existing water infrastructure:** 3 broken canzee pumps, 1 Bucket well  
**Wells installed by MWP:** MWP139 - MWP140



### MAHELA

Lat 20°58'09.9"S Long 48°26'29.9"E

Date of Installation: September 2021

Pump Type: XL Pump

Pedestal: Cast iron

Screen / Well Point: Steel

Pipe: Steel

Flow: 25 liters per minute

Quality: Fresh, Little brownie



WT: 1.7m BHA: WP+3+1 BGL: 4.2m

Note: Drill until WT1.7m, settled BHA WP+3+IC+2, hammered/turned until major obstacle at 4.8mBGL, Test but hard to pump, handle pushed back while pumping, very low and dirty black flow, hammered out, turned, changing 2m pipe to 1m, lifted up and Tested every 20cm, finally BHA: WP+3+IC+1, good production with Fresh water, but coloration slightly brown.



## MAHELA

Lat 20°58'10.9"S Long 48°26'32.0"E

Date of Installation: September 2021

Pump Type: XL Pump

Pedestal: Cast iron

Screen / Well Point: Steel

Pipe: Steel

Flow: 25 liters per minute

Quality: Fresh



WT: 1.8m BHA: WP+3+2 BGL: 5.2m





**MADAGASCAR**  
WATER PROJECT

# The Madagascar Water Project

MWP-141

## ANALILA

Lat: 20° 16' 30.93" S Long: 48° 39' 6.85" E

REPLACEMENT of MWP52

### MWP – 141

**Date Of Installation: October 2021**

Pump Type: Standard pump

Screen / Well Point: Steel

Pipe: Steel

Pedestal: Cast iron

Flow: 20 liters / minute

Quality of water: Fresh, clear

MWP-141 is the replacement of the plugged MWP52

#### Technical data

WT: 6m

BHA: WP+3+3+IC+2



Photo Oct 2021





# The Madagascar Water Project

MWP141

REPLACEMENT of MWP52

**ANALILA**  
Lat: 20° 16' 30.93" S Long: 48° 39' 6.85" E



Photo Oct 2021



Photo Oct 2021



## MANONILAZA

Lat: 20° 16' 35.09" S Long: 48° 38' 35.08" E

### MWP – 142

**Date Of Installation: October 2021**

Pump Type: Standard pump

Screen / Well Point: Steel

Pipe: Steel

Pedestal: Cast iron

Flow: 25 liters / minute

Quality of water: Fresh, clear

MWP-142 is the replacement of the plugged MWP48

#### Technical data

WT: 4.5m

BHA: WP+3+1+IC+2



Photo Oct 2021



## MANONILAZA

Lat: 20° 16' 35.09" S Long: 48° 38' 35.08" E





## SAKOHO

WEST OF MASOMELOKA

Lat: 20° 14' 32.07" S Long: 48° 29' 58.06" E

### MWP – 143

**Date Of Installation: October 2021**

Pump Type: Standard pump

Screen / Well Point: Steel

Pipe: Steel

Pedestal: Cast iron

Flow: 25 liters / minute

Quality of water: Fresh, clear

#### Technical data

WT: 6m

BHA: WP+3+3+IC+2

- Region: Antsinanana
- District: Mahanoro
- Commune: Masomeloka
- Fonkotany: Sakoho
- Number of population: 300

Source of revenue: Fishing, Farming

Source of water: River

Well installed by MWP: MWP143



Photo Dec 2021

## MASOMELOKA

Lat: 20° 16' 45.61" S Long: 49° 3' 23.03" E

REPLACEMENT of MWP49

### MWP – 144

**Date Of Installation: October 2021**

Pump Type: Standard pump

Screen / Well Point: Steel

Pipe: Steel

Pedestal: wood table

Flow: 25 liters / minute

Quality of water: Fresh, clear

Current pedestal: Wood table

MWP-144 is the replacement of the plugged MWP49

#### Technical data

WT: 3m

BHA: WP+3+IC+3



Photo Oct 2021



## MASOMELOKA

Lat: 20° 16' 45.54" S Long: 48° 37' 30.02" E

REPLACEMENT of MWP50

### MWP – 145

Date Of Installation: October 2021

Pump Type: Standard pump

Screen / Well Point: Steel

Pipe: Steel

Pedestal: wood table

Flow: 25 liters / minute

Current pedestal: Wood table

Quality of water: Fresh, clear

MWP-145 is the replacement of the plugged MWP50

#### Technical data

WT: 3m

BHA: WP+3+IC+3





## AMBODIATAFANA

WEST OF MASOMELOKA

Lat: 20° 14' 40.0" S Long: 48° 30' 19.2" E

### MWP – 146

**Date Of Installation:** October 2021

Pump Type: Standard pump

Screen / Well Point: Steel

Pipe: Steel

Pedestal: Cast iron

Flow: 25 liters / minute

Quality of water: Fresh, clear

#### Technical data

WT: 6.7m

BHA: WP+3+3+IC+2+1

- Region: Antsinanana
- District: Mahanoro
- Commune: Masomeloka
- Fonkotany: Ambodiatafana
- Number of population: 300

Source of revenue: Fishing, Farming

Source of water: River

Well installed by MWP: MWP146







# The Madagascar Water Project

MWP-147

## AMBOHITSARA

Lat: 20° 33' 50.39" S Long: 48° 30' 3.98" E

REPLACEMENT of MWP96

### MWP – 147

**Date Of Installation: October 2021**

Pump Type: Standard pump   Screen/Well Point: Steel   Pipe: Steel   Pedestal: Cast iron   Flow: 25 liters / minute   Quality of water: Fresh, clear  
MWP-147 is the replacement of the plugged MWP96

Technical data: WT: 2m   BHA: WP+2+IC+2



Photo Oct 2021





# The Madagascar Water Project

MWP-148  
AMBALANAKONDRO  
WEST OF MASOMELOKA

## AMBALANAKONDRO

WEST OF MASOMELOKA

Lat: 20° 14' 18.5" S Long: 48° 29' 08.8" E

### MWP – 141

**Date Of Installation: December 2021**

Pump Type: Standard pump

Screen / Well Point: Steel

Pipe: Steel

**Pedestal: Cast iron**

Flow: 25 liters / minute

Quality of water: Fresh, clear

#### Technical data

WT: 3.5m

BHA: WP+3m pipe+IC+2m pipe+1m pipe

- Region: Antsinanana
- District: Mahanoro
- Commune: Masomeloka
- Fonkotany: Ambalanakondro
- Number of population: 300

Source of revenue: Fishing, Farming  
Source of water: River  
Well installed by MWP: MWP148



Photo Dec 2021



## AMBALANAKONDRO

WEST OF MASOMELOKA

Lat: 20° 14' 18.5" S Long: 48° 29' 08.8" E



Second drilling inside the village, which failed



First flow of MWP148



## MWP – 149

**Date Of Installation: December 2021**

Pump Type: Standard pump

Screen / Well Point: Steel

Pipe: Steel

Pedestal: wood table

Flow: 25 liters / minute

Quality of water: Fresh, clear

MWP-149 is the replacement of MWP54

### Technical data

WT: 4m

BHA: WP+3m pipe+IC+2m pipe+1m pipe

## MASOMELOKA

Lat: 20°16'48.64"S Long: 48°37'32.99"E



Photo Dec 2021





# The Madagascar Water Project

MWP-149  
MASOMELOKA

REPLACEMENT of MWP54

## MASOMELOKA

Lat: 20° 14' 18.5" S Long: 48° 29' 08.8" E



Good flow of MWP148



# The Madagascar Water Project

MWP-150

REPLACEMENT of MWP60

## MWP – 150

**Date Of Installation: December 2021**

Pump Type: Standard pump

Screen / Well Point: Steel

Pipe: Steel

Pedestal: Wood table

Flow: 25 liters / minute

Quality of water: Fresh, clear

MWP-153 is the replacement of the plugged MWP60

### Technical data

WT: 2m

BHA: WP+3m pipe+IC+1m pipe+1m pipe

## SOHIHY

Lat: 20° 12' 57.8" S Long: 48° 40' 28.3" E



Photo Dec 2021





# The Madagascar Water Project

MWP-150

REPLACEMENT of MWP60

SOHIHY

Lat: 20° 12' 57.8" S Long: 48° 40' 28.3" E



Good flow of MWP150



We did a coring, tried to put well point in a clear sand with a good reservoir



# The Madagascar Water Project

MWP-151  
SALEHY

REPLACEMENT of MWP69

## SALEHY

Lat: 19° 59' 16.18" S Long: 48° 47' 7.36" E

### MWP – 151

**Date Of Installation: December 2021**

Pump Type: Standard pump

Screen / Well Point: Steel

Pipe: Steel

Pedestal: cast iron

Flow: 25 liters / minute

Quality of water: Fresh, clear

MWP-151 is the replacement of the plugged MWP69

#### Technical data

WT: 3m

BHA: WP+3m pipe+IC+2m pipe+1m pipe



Photo Dec 2021





# The Madagascar Water Project

MWP-151

SALEHY

Lat: 19° 59' 16.18" S Long: 48° 47' 7.36" E

REPLACEMENT of MWP69



Photo Dec 2021



Photo Dec 2021



## MAROSIKY

Lat: 19° 35' 49.75" S Long: 48° 51' 55.78" E

REPLACEMENT of MWP73

### MWP – 152

**Date Of Installation: December 2021**

Pump Type: Standard pump

Screen / Well Point: Steel

Pipe: Steel

Pedestal: cast iron

Flow: 25 liters / minute

Quality of water: Fresh, clear

MWP-152 is the replacement of the plugged MWP72

#### Technical data

WT: 5m

BHA: WP+ 3m pipe+2m pipe + IC+1m pipe + 0.5m pipe + 0.5m pipe



Photo Dec 2021



# The Madagascar Water Project

MWP-152

REPLACEMENT of MWP73

## MAROSIKY

Lat: 19° 35' 49.75" S Long: 48° 51' 55.78" E



First flow of MWP152

## MAROSIKY

Lat: 19° 35' 37.55" S Long: 48° 52' 1.19" E

### MWP – 153

**Date Of Installation: December 2021**

Pump Type: Standard pump

Screen / Well Point: Steel

Pipe: Steel

Pedestal: cast iron

Flow: 25 liters / minute

Quality of water: Fresh, clear

MWP-153 is the replacement of the plugged MWP72

#### Technical data

WT: 4.7m

BHA: WP+ 3m pipe+2m pipe + IC+1m pipe + 0.5m pipe



Photo Dec 2021



## TSIVANGINA

Lat: 19°39'4.74"S Long: 48°47'4.87"E



### MWP – 154

**Date Of Installation: Aug 2022**

Pump Type: Standard pump

Screen / Well Point: Steel

Pipe: Steel

Pedestal: cast iron

Flow: 25 liters / minute

Quality of water: Fresh, clear

MWP-154 is the replacement of the plugged MWP12

#### Technical data

WT: 5.0m

BHA: WP+ 3m pipe+2m pipe + 2m pipe

## AMPANOTOANA

Lat: 20°12'26.69"S Long: 48°40'26.23"E

### MWP – 155

**Date Of Installation: Aug 2022**

Pump Type: Standard pump

Screen / Well Point: Steel

Pipe: Steel

Pedestal: cast iron

Flow: 25 liters / minute

Quality of water: Fresh, clear

MWP-155 is the replacement of the plugged MWP62

#### Technical data

WT: 5.0m

BHA: WP+ 3m pipe+2m pipe + 2m pipe





## ANTANIAMBO

Lat: 20° 15' 50.33" S Long: 48° 39' 10.13" E

### MWP – 156

**Date Of Installation: Aug 2022**

Pump Type: Standard pump

Screen / Well Point: Steel

Pipe: Steel

Pedestal: cast iron

Flow: 25 liters / minute

Quality of water: Fresh, clear

MWP-156 is the replacement of the plugged MWP57

#### Technical data

WT: 3.5m

BHA: WP+ 3m pipe+1m pipe +2m pipe







# The Madagascar Water Project

MWP-157

## MASOMELOKA

Lat: 20°17'2.59"S Long: 48°37'27.22"E

### MWP – 157

**Date Of Installation: Aug 2022**

Pump Type: Standard pump

Screen / Well Point: Steel

Pipe: Steel

Pedestal: cast iron

Flow: 25 liters / minute

Quality of water: Fresh, clear

#### Technical data

WT: 2.0m

BHA: WP+ 3m pipe+1.5m pipe + 0.5m pipe + 1m pipe

