



**COMMERCIAL  
FLEET SERVICE, INC.**

---

**CONCRETE PLACING SYSTEMS • AIR COMPRESSORS**

---

**SALES, PARTS & SERVICE**

---

# Concrete Placing Tools and Accessories

2847 East Jones Avenue  
Phoenix, AZ 85040  
(602) 305-6800

10103 Harmon Rd.  
Fort Worth, TX 76177  
(817) 232-2300

Pg #	Item #	Description
5	013709484	Rod, Finish 48" Wood Gunite
6	013709535	Rod, Finish 48" Aluminum Gunite
7	087CC914F	Fresno, Finish 24" Round Full Curve
8	087CC914H	Fresno, Finish 24" Round Half Curve
9	0137401086	Fresno, Finish 24" Round Curved
10	HANDLE	Wood Fresno Handle
11	0137401116	Trowel, Finish 12" x 4"
12	07113208	Trowel, Finish 12" x 4" Curved Wood Handle
13	087CF208	Trowel, Gunite 12" x 4" Exposed Rivet Wood Handle
14	07112132	Trowel, Finish 12" x 5" Curved Wood Handle
15	0137401062	Trowel, Finish 12" x 5" Exposed Rivet Straight Wood Handle
16	07116200	Margin Trowel, 5" x 1-1/2"
17	07116197	Margin Trowel, 5" x 2"
18	087HC151	Margin Trowel, 5" x 2"
19	087CF276B	Pool Trowel, 12" x 3-1/2"
20	087CF4375R	Pool Trowel, 14" x 4"
21	07114518	Mahogany Float 18"
22	07114270	Curb Tool, 2" Radius Durasoft Handle
23	07114274	Gutter Tool, 2" Radius Durasoft Handle
24	07114272	Curb Tool, 3" Radius Durasoft Handle
25	07114276	Gutter Tool, 3" Radius Durasoft Handle
26	07114084	Boots, White Rubber Size 8
26	07114085	Boots, White Rubber Size 9
26	07114086	Boots, White Rubber Size 10
26	07114087	Boots, White Rubber Size 11
26	07113466	Boots, White Rubber Size 12
27	GREASEGUN	Grease Gun
28	031C15SD	Clamp, Heavy Duty 1-1/2"
28	031C20SD	Clamp, Heavy Duty 2"
28	031C25SD	Clamp, Heavy Duty 2-1/2"
29	031C30SD	Clamp, Heavy Duty 3"
29	031C40SD	Clamp, Heavy Duty 4"
29	031C50SD	Clamp, Heavy Duty 5"

Pg #	Item #	Description
30	031CG15D	Gasket, Heavy Duty 1-1/2"
30	031CG20D	Gasket, Heavy Duty 2"
30	031CG25D	Gasket, Heavy Duty 2-1/2"
30	031CG30D	Gasket, Heavy Duty 3"
30	031CG40D	Gasket, Heavy Duty 4"
30	031CG50D	Gasket, Heavy Duty 5"
31	031C15SG	Clamp, Grooved 1-1/2"
31	031C20SG	Clamp, Grooved 2"
32	031CG15G	Gasket, Grooved Clamp 1-1/2"
32	031CG20G	Gasket, Grooved Clamp 2"
33	110SN200APD	Complete Nozzle, 2" HD Western w/ 3/4" Air Fitting
34	110SN200AP	Complete Nozzle, 2" VIC Western w/ 3/4" Air Fitting
35	110SN202APD	Nozzle, 2" HD Insert
36	110SN202AP	Nozzle, 2" VIC Insert
37	0137602088	Nozzle, 2" Tip Mesa Molded Long
38	110SN220	Nozzle, 2" Tip Western
39	00880723555S	Nozzle, 2" Tip
40	110SN203AP	Nozzle, 2" Air Ring Western
41	031H20N150D2K	MCW 2" x 50' HD-HD
41	031H20N150DGK	MCW 2" x 50' HD-VIC
41	031H20N150G2K	MCW 2" x 50' VIC-VIC
42	031HB20DH	Hose End, 2" HD
43	031HB20GH	Hose End, 2" VIC
44	018CP14S	Clamp, 5/8" x 3-1/2" Center Punch Clamp
45	039CB15	Clean Out Ball, 1-1/2" Hose
45	039CB2	Clean Out Ball, 2" Hose
45	039CB3	Clean Out Ball, 2-1/2" and 3" Hoses
45	039CB4	Clean Out Ball, 4" Hose
45	039CB5M	Clean Out Ball, 5" Hose (Medium)
46	031R302028D	Reducer, 3" x 2" x 28" Heavy Duty
46	031R302036D	Reducer, 3" x 2" x 36" Heavy Duty
47	008R035R30R20H	Reducer, 3" x 2" x 35" w/ Handle
47	008R302028RR	Reducer, 3" x 2" x 28" w/ Handle

Pg #	Item #	Description
48	031RE4030D	90 Degree Reducing Elbow, 4" x 3" HD
48	031RE5030D	90 Degree Reducing Elbow, 5" x 3" HD
48	031RE5040D	90 Degree Reducing Elbow, 5" x 4" HD
49	HOSECRUTCH	Hose, Crutch
50	012345	Hose, Air 3/4" x 50' w/ Air King Fittings
51	12397134	Additive, Slick-Pak
52	12395200	Additive, Standard Delayed Set
53	12398455	Additive, Plaster Fast-Set
54	12397140	Additive, Supercizer 7
55	12397180	Additive, Super Slump Buster
56	12397000	Additive, Control Finish
57	12397081	Additive, NS-7
58	12395664	Additive, Super Air Plus
59	Shooting Wire	50lb Coil, 0.035 or 0.042
60	WATERLEVEL	Water Level Hose
61	096WB1	Whip Check, 1/2" x 1-1/4" ID Hose to Hose
61	096WA2	Whip Check, 1-1/2" x 3" ID Hose to Hose
62	031SL5000	Safety Sling
63	07114739	Rebar Bender
64	JIFFY	Jiffy Jack
65	016AL800B	Alphalock





## COMMERCIAL FLEET SERVICE, INC.

2847 East Jones Avenue  
Phoenix, AZ 85040  
(602) 305-6800

10103 Harmon Rd.  
Fort Worth, TX 76177  
(817) 232-2300

CONCRETE PLACING SYSTEMS

•

AIR COMPRESSORS

•

SALES, PARTS & SERVICE

**WWW.COMFLEETSERV.COM**



Item #: 013709484

Rod, Finish 48" Wood Gunite



## COMMERCIAL FLEET SERVICE, INC.

2847 East Jones Avenue  
Phoenix, AZ 85040  
(602) 305-6800

10103 Harmon Rd.  
Fort Worth, TX 76177  
(817) 232-2300

CONCRETE PLACING SYSTEMS

•

AIR COMPRESSORS

•

SALES, PARTS & SERVICE

**WWW.COMFLEETSERV.COM**



Item #: 013709535

Rod, Finish 48" Aluminum Gunite



## COMMERCIAL FLEET SERVICE, INC.

2847 East Jones Avenue  
Phoenix, AZ 85040  
(602) 305-6800

10103 Harmon Rd.  
Fort Worth, TX 76177  
(817) 232-2300

CONCRETE PLACING SYSTEMS

•

AIR COMPRESSORS

•

SALES, PARTS & SERVICE

**WWW.COMFLEETSERV.COM**



Item #: 087CC914F

Fresno, Finish 24" Round Full Curve





## COMMERCIAL FLEET SERVICE, INC.

2847 East Jones Avenue  
Phoenix, AZ 85040  
(602) 305-6800

10103 Harmon Rd.  
Fort Worth, TX 76177  
(817) 232-2300

CONCRETE PLACING SYSTEMS

•

AIR COMPRESSORS

•

SALES, PARTS & SERVICE

**WWW.COMFLEETSERV.COM**



Item #: 087CC914H

Fresno, Finish 24" Round Half Curve



## COMMERCIAL FLEET SERVICE, INC.

2847 East Jones Avenue  
Phoenix, AZ 85040  
(602) 305-6800

10103 Harmon Rd.  
Fort Worth, TX 76177  
(817) 232-2300

CONCRETE PLACING SYSTEMS

•

AIR COMPRESSORS

•

SALES, PARTS & SERVICE

**WWW.COMFLEETSERV.COM**



Item #: 0137401086

Fresno, Finish 24" Round Curved





## COMMERCIAL FLEET SERVICE, INC.

2847 East Jones Avenue  
Phoenix, AZ 85040  
(602) 305-6800

10103 Harmon Rd.  
Fort Worth, TX 76177  
(817) 232-2300

CONCRETE PLACING SYSTEMS

•

AIR COMPRESSORS

•

SALES, PARTS & SERVICE

**WWW.COMFLEETSERV.COM**



Item #: HANDLE

Wood Fresno Handle



## COMMERCIAL FLEET SERVICE, INC.

2847 East Jones Avenue  
Phoenix, AZ 85040  
(602) 305-6800

10103 Harmon Rd.  
Fort Worth, TX 76177  
(817) 232-2300

CONCRETE PLACING SYSTEMS



AIR COMPRESSORS



SALES, PARTS & SERVICE

**WWW.COMFLEETSERV.COM**



Item #: 0137401116

Trowel, Finish 12" x 4"



## COMMERCIAL FLEET SERVICE, INC.

2847 East Jones Avenue  
Phoenix, AZ 85040  
(602) 305-6800

10103 Harmon Rd.  
Fort Worth, TX 76177  
(817) 232-2300

CONCRETE PLACING SYSTEMS

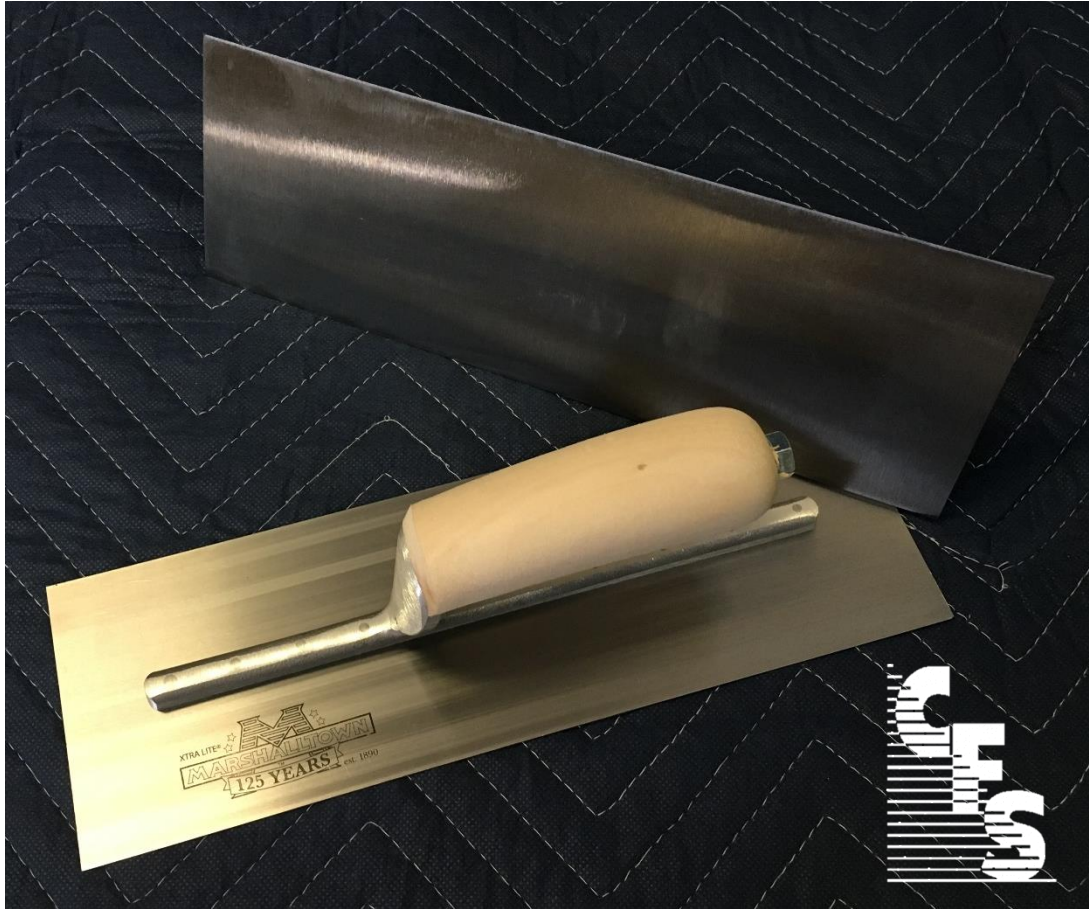
•

AIR COMPRESSORS

•

SALES, PARTS & SERVICE

**WWW.COMFLEETSERV.COM**



Item #: 07113208

Trowel, Finish 12" x 4" Curved Wood Handle





## COMMERCIAL FLEET SERVICE, INC.

2847 East Jones Avenue  
Phoenix, AZ 85040  
(602) 305-6800

10103 Harmon Rd.  
Fort Worth, TX 76177  
(817) 232-2300

CONCRETE PLACING SYSTEMS

•

AIR COMPRESSORS

•

SALES, PARTS & SERVICE

**WWW.COMFLEETSERV.COM**



Item #: 087CF208

Trowel, Gunitite 12" x 4" Exposed Rivet Wood Handle



## COMMERCIAL FLEET SERVICE, INC.

2847 East Jones Avenue  
Phoenix, AZ 85040  
(602) 305-6800

10103 Harmon Rd.  
Fort Worth, TX 76177  
(817) 232-2300

CONCRETE PLACING SYSTEMS

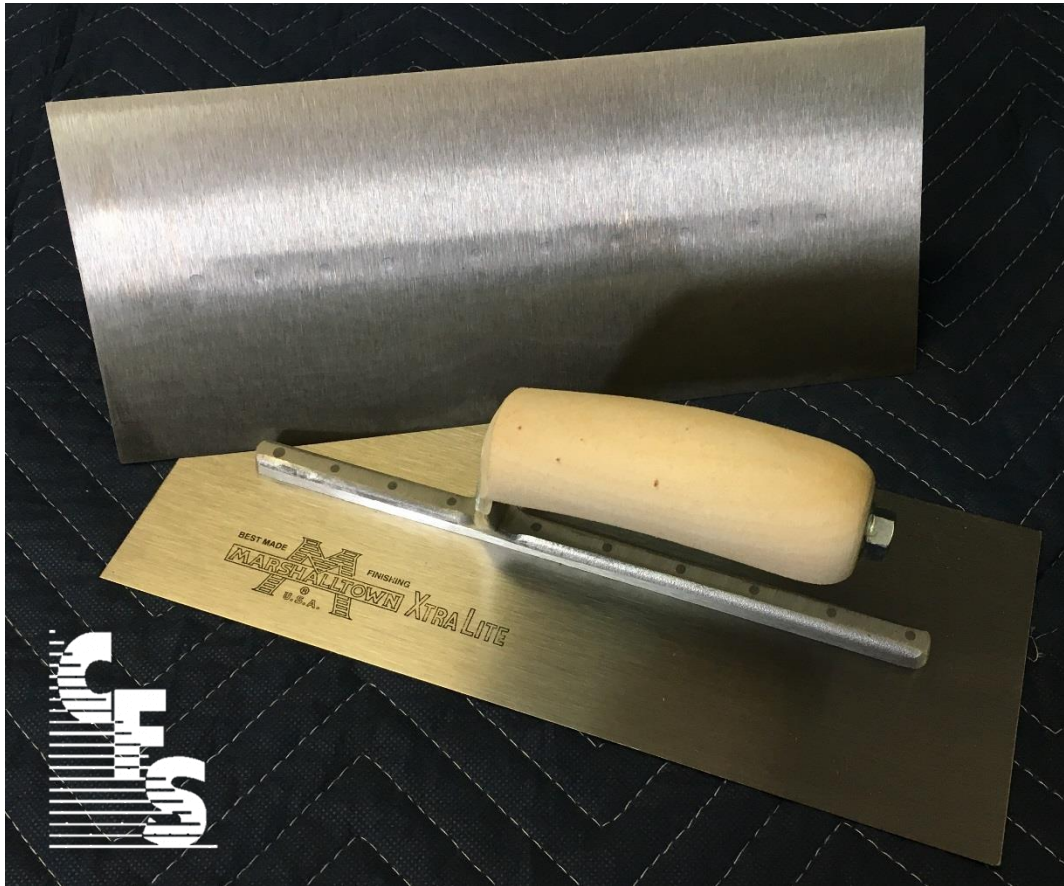


AIR COMPRESSORS



SALES, PARTS & SERVICE

**WWW.COMFLEETSERV.COM**



Item #: 07112132

Trowel, Finish 12" x 5" Curved Wood Handle





## COMMERCIAL FLEET SERVICE, INC.

2847 East Jones Avenue  
Phoenix, AZ 85040  
(602) 305-6800

10103 Harmon Rd.  
Fort Worth, TX 76177  
(817) 232-2300

CONCRETE PLACING SYSTEMS

•

AIR COMPRESSORS

•

SALES, PARTS & SERVICE

**WWW.COMFLEETSERV.COM**



Item #: 0137401062

Trowel, Finish 12" x 5" Exposed Rivet Straight Wood Handle



## COMMERCIAL FLEET SERVICE, INC.

2847 East Jones Avenue  
Phoenix, AZ 85040  
(602) 305-6800

10103 Harmon Rd.  
Fort Worth, TX 76177  
(817) 232-2300

CONCRETE PLACING SYSTEMS

•

AIR COMPRESSORS

•

SALES, PARTS & SERVICE

**WWW.COMFLEETSERV.COM**



Item #: 07116200

Margin Trowel, 5" x 1-1/2"





## COMMERCIAL FLEET SERVICE, INC.

2847 East Jones Avenue  
Phoenix, AZ 85040  
(602) 305-6800

10103 Harmon Rd.  
Fort Worth, TX 76177  
(817) 232-2300

CONCRETE PLACING SYSTEMS

•

AIR COMPRESSORS

•

SALES, PARTS & SERVICE

**WWW.COMFLEETSERV.COM**



Item #: 07116197

Margin Trowel, 5" x 2"



## COMMERCIAL FLEET SERVICE, INC.

2847 East Jones Avenue  
Phoenix, AZ 85040  
(602) 305-6800

10103 Harmon Rd.  
Fort Worth, TX 76177  
(817) 232-2300

CONCRETE PLACING SYSTEMS

•

AIR COMPRESSORS

•

SALES, PARTS & SERVICE

**WWW.COMFLEETSERV.COM**



Item #: 087HC151

Margin Trowel, 5" x 2"





## COMMERCIAL FLEET SERVICE, INC.

2847 East Jones Avenue  
Phoenix, AZ 85040  
(602) 305-6800

10103 Harmon Rd.  
Fort Worth, TX 76177  
(817) 232-2300

CONCRETE PLACING SYSTEMS

•

AIR COMPRESSORS

•

SALES, PARTS & SERVICE

**WWW.COMFLEETSERV.COM**



Item #: 087CF276B

Pool Trowel, 12" x 3-1/2"



## COMMERCIAL FLEET SERVICE, INC.

2847 East Jones Avenue  
Phoenix, AZ 85040  
(602) 305-6800

10103 Harmon Rd.  
Fort Worth, TX 76177  
(817) 232-2300

CONCRETE PLACING SYSTEMS

•

AIR COMPRESSORS

•

SALES, PARTS & SERVICE

**WWW.COMFLEETSERV.COM**



Item #: 087CF4375R

Pool Trowel, 14" x 4"





## COMMERCIAL FLEET SERVICE, INC.

2847 East Jones Avenue  
Phoenix, AZ 85040  
(602) 305-6800

10103 Harmon Rd.  
Fort Worth, TX 76177  
(817) 232-2300

CONCRETE PLACING SYSTEMS

•

AIR COMPRESSORS

•

SALES, PARTS & SERVICE

**WWW.COMFLEETSERV.COM**



Item #: 07114518

Mahogany Float 18"



## COMMERCIAL FLEET SERVICE, INC.

2847 East Jones Avenue  
Phoenix, AZ 85040  
(602) 305-6800

10103 Harmon Rd.  
Fort Worth, TX 76177  
(817) 232-2300

CONCRETE PLACING SYSTEMS

•

AIR COMPRESSORS

•

SALES, PARTS & SERVICE

**WWW.COMFLEETSERV.COM**



Item #: 07114270

Curb Tool, 2" Radius Durasoft Handle





## COMMERCIAL FLEET SERVICE, INC.

2847 East Jones Avenue  
Phoenix, AZ 85040  
(602) 305-6800

10103 Harmon Rd.  
Fort Worth, TX 76177  
(817) 232-2300

CONCRETE PLACING SYSTEMS

•

AIR COMPRESSORS

•

SALES, PARTS & SERVICE

**WWW.COMFLEETSERV.COM**



Item #: 07114274

Gutter Tool, 2" Radius Durasoft Handle



## COMMERCIAL FLEET SERVICE, INC.

2847 East Jones Avenue  
Phoenix, AZ 85040  
(602) 305-6800

10103 Harmon Rd.  
Fort Worth, TX 76177  
(817) 232-2300

CONCRETE PLACING SYSTEMS

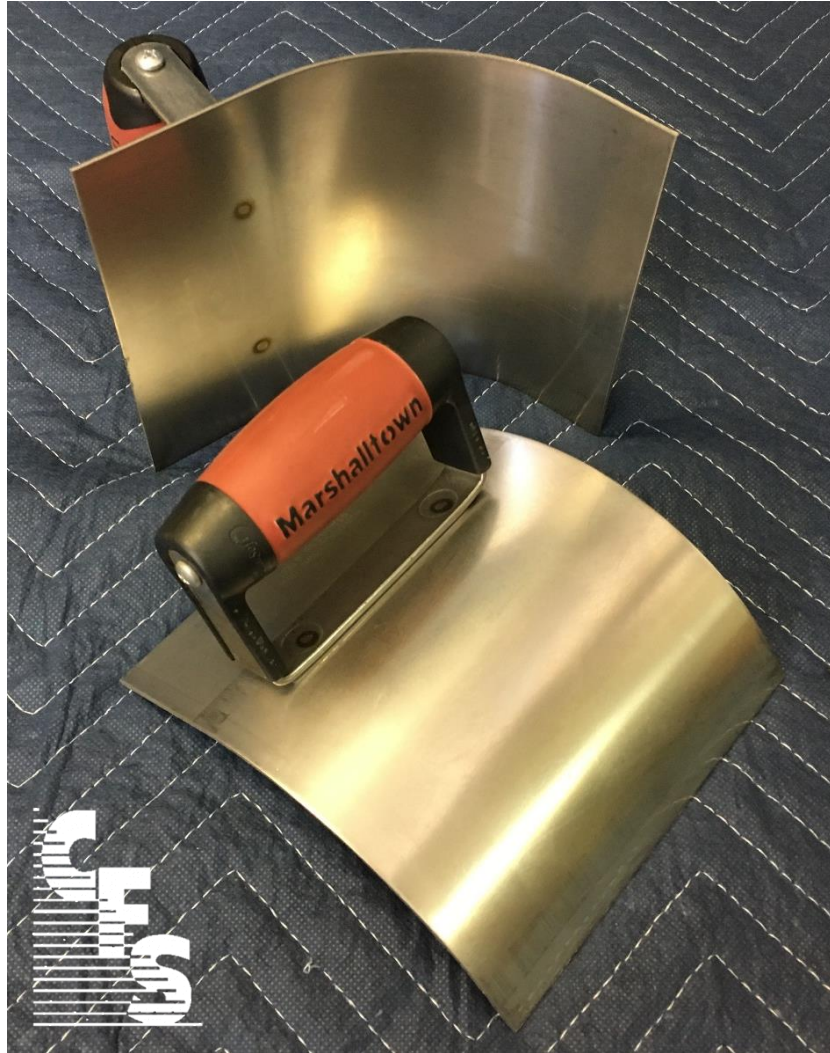
•

AIR COMPRESSORS

•

SALES, PARTS & SERVICE

**WWW.COMFLEETSERV.COM**



Item #: 07114272

Curb Tool, 3" Radius Durasoft Handle





## COMMERCIAL FLEET SERVICE, INC.

2847 East Jones Avenue  
Phoenix, AZ 85040  
(602) 305-6800

10103 Harmon Rd.  
Fort Worth, TX 76177  
(817) 232-2300

CONCRETE PLACING SYSTEMS

•

AIR COMPRESSORS

•

SALES, PARTS & SERVICE

**WWW.COMFLEETSERV.COM**



Item #: 07114276

Gutter Tool, 3" Radius Durasoft Handle



## COMMERCIAL FLEET SERVICE, INC.

2847 East Jones Avenue  
Phoenix, AZ 85040  
(602) 305-6800

10103 Harmon Rd.  
Fort Worth, TX 76177  
(817) 232-2300

CONCRETE PLACING SYSTEMS

•

AIR COMPRESSORS

•

SALES, PARTS & SERVICE

**WWW.COMFLEETSERV.COM**



### Boots, White Rubber

07114084 Size 8

07114085 Size 9

07114086 Size 10

07114087 Size 11

07113466 Size 12





## COMMERCIAL FLEET SERVICE, INC.

2847 East Jones Avenue  
Phoenix, AZ 85040  
(602) 305-6800

10103 Harmon Rd.  
Fort Worth, TX 76177  
(817) 232-2300

CONCRETE PLACING SYSTEMS

•

AIR COMPRESSORS

•

SALES, PARTS & SERVICE

**WWW.COMFLEETSERV.COM**



Grease Gun



## COMMERCIAL FLEET SERVICE, INC.

2847 East Jones Avenue  
Phoenix, AZ 85040  
(602) 305-6800

10103 Harmon Rd.  
Fort Worth, TX 76177  
(817) 232-2300

CONCRETE PLACING SYSTEMS



AIR COMPRESSORS



SALES, PARTS & SERVICE

**WWW.COMFLEETSERV.COM**



Clamps, Heavy Duty

031C15SD, 1-1/2"

031C20SD, 2"

031C25SD, 2-1/2"





## COMMERCIAL FLEET SERVICE, INC.

2847 East Jones Avenue  
Phoenix, AZ 85040  
(602) 305-6800

10103 Harmon Rd.  
Fort Worth, TX 76177  
(817) 232-2300

CONCRETE PLACING SYSTEMS

•

AIR COMPRESSORS

•

SALES, PARTS & SERVICE

**WWW.COMFLEETSERV.COM**



Clamps, Heavy Duty w/ Adjustable Handle

031C30SD, 3"

031C40SD, 4"

031C50SD, 5"



## COMMERCIAL FLEET SERVICE, INC.

2847 East Jones Avenue  
Phoenix, AZ 85040  
(602) 305-6800

10103 Harmon Rd.  
Fort Worth, TX 76177  
(817) 232-2300

CONCRETE PLACING SYSTEMS

•

AIR COMPRESSORS

•

SALES, PARTS & SERVICE

**WWW.COMFLEETSERV.COM**



### Gasket, Heavy Duty Clamp

031CG15D, 1-1/2"

031CG20D, 2"

031CG25D, 2-1/2"

031CG30D, 3"

031CG40D, 4"

031CG50D, 5"





## COMMERCIAL FLEET SERVICE, INC.

2847 East Jones Avenue  
Phoenix, AZ 85040  
(602) 305-6800

10103 Harmon Rd.  
Fort Worth, TX 76177  
(817) 232-2300

CONCRETE PLACING SYSTEMS

•

AIR COMPRESSORS

•

SALES, PARTS & SERVICE

**WWW.COMFLEETSERV.COM**



Clamps, Grooved

031C15SG, 1-1/2"

031C20SG, 2"



## COMMERCIAL FLEET SERVICE, INC.

2847 East Jones Avenue  
Phoenix, AZ 85040  
(602) 305-6800

10103 Harmon Rd.  
Fort Worth, TX 76177  
(817) 232-2300

CONCRETE PLACING SYSTEMS

•

AIR COMPRESSORS

•

SALES, PARTS & SERVICE

**WWW.COMFLEETSERV.COM**



Gasket, Grooved Clamp

031CG15G, 1-1/2"

031CG20G, 2"





## COMMERCIAL FLEET SERVICE, INC.

2847 East Jones Avenue  
Phoenix, AZ 85040  
(602) 305-6800

10103 Harmon Rd.  
Fort Worth, TX 76177  
(817) 232-2300

CONCRETE PLACING SYSTEMS

•

AIR COMPRESSORS

•

SALES, PARTS & SERVICE

**WWW.COMFLEETSERV.COM**



Item #: 110SN200APD

Complete Nozzle, 2" HD Western w/  $\frac{3}{4}$ " Air Fitting



## COMMERCIAL FLEET SERVICE, INC.

2847 East Jones Avenue  
Phoenix, AZ 85040  
(602) 305-6800

10103 Harmon Rd.  
Fort Worth, TX 76177  
(817) 232-2300

CONCRETE PLACING SYSTEMS



AIR COMPRESSORS



SALES, PARTS & SERVICE

**WWW.COMFLEETSERV.COM**



Item #: 110SN200AP

Complete Nozzle, 2" VIC Western w/  $\frac{3}{4}$ " Air Fitting





## COMMERCIAL FLEET SERVICE, INC.

2847 East Jones Avenue  
Phoenix, AZ 85040  
(602) 305-6800

10103 Harmon Rd.  
Fort Worth, TX 76177  
(817) 232-2300

CONCRETE PLACING SYSTEMS



AIR COMPRESSORS



SALES, PARTS & SERVICE

**WWW.COMFLEETSERV.COM**



Item #: 110SN202APD

Nozzle, 2" HD Insert



## COMMERCIAL FLEET SERVICE, INC.

2847 East Jones Avenue  
Phoenix, AZ 85040  
(602) 305-6800

10103 Harmon Rd.  
Fort Worth, TX 76177  
(817) 232-2300

CONCRETE PLACING SYSTEMS



AIR COMPRESSORS



SALES, PARTS & SERVICE

**WWW.COMFLEETSERV.COM**



Item #: 110SN202AP

Nozzle, 2" VIC Insert





## COMMERCIAL FLEET SERVICE, INC.

2847 East Jones Avenue  
Phoenix, AZ 85040  
(602) 305-6800

10103 Harmon Rd.  
Fort Worth, TX 76177  
(817) 232-2300

CONCRETE PLACING SYSTEMS

•

AIR COMPRESSORS

•

SALES, PARTS & SERVICE

**WWW.COMFLEETSERV.COM**



Item #: 0137602088

Nozzle, 2" Tip Mesa Molded Long



## COMMERCIAL FLEET SERVICE, INC.

2847 East Jones Avenue  
Phoenix, AZ 85040  
(602) 305-6800

10103 Harmon Rd.  
Fort Worth, TX 76177  
(817) 232-2300

CONCRETE PLACING SYSTEMS

•

AIR COMPRESSORS

•

SALES, PARTS & SERVICE

**WWW.COMFLEETSERV.COM**



Item #: 110SN220

Nozzle, 2" Tip Long Western



## COMMERCIAL FLEET SERVICE, INC.

2847 East Jones Avenue  
Phoenix, AZ 85040  
(602) 305-6800

10103 Harmon Rd.  
Fort Worth, TX 76177  
(817) 232-2300

CONCRETE PLACING SYSTEMS

•

AIR COMPRESSORS

•

SALES, PARTS & SERVICE

**WWW.COMFLEETSERV.COM**



Item #: 00880723555S

Nozzle, 2" Tip





## COMMERCIAL FLEET SERVICE, INC.

2847 East Jones Avenue  
Phoenix, AZ 85040  
(602) 305-6800

10103 Harmon Rd.  
Fort Worth, TX 76177  
(817) 232-2300

CONCRETE PLACING SYSTEMS

•

AIR COMPRESSORS

•

SALES, PARTS & SERVICE

**WWW.COMFLEETSERV.COM**



Item #: 110SN203AP

Nozzle, 2" Air Ring Western



## COMMERCIAL FLEET SERVICE, INC.

2847 East Jones Avenue  
Phoenix, AZ 85040  
(602) 305-6800

10103 Harmon Rd.  
Fort Worth, TX 76177  
(817) 232-2300

CONCRETE PLACING SYSTEMS

• AIR COMPRESSORS

• SALES, PARTS & SERVICE

**WWW.COMFLEETSERV.COM**



Hose, MCW 2" Kleber

031H20N150D2K, MCW 2" x 50' HD-HD

031H20N150DGK, MCW 2" x 50' HD-VIC

031H20N150G2K, MCW 2" x 50' VIC-VIC

**25' Lengths Also Available**



## COMMERCIAL FLEET SERVICE, INC.

2847 East Jones Avenue  
Phoenix, AZ 85040  
(602) 305-6800

10103 Harmon Rd.  
Fort Worth, TX 76177  
(817) 232-2300

CONCRETE PLACING SYSTEMS

•

AIR COMPRESSORS

•

SALES, PARTS & SERVICE

**WWW.COMFLEETSERV.COM**



Item #: 031HB20DH

Hose End, 2" HD





## COMMERCIAL FLEET SERVICE, INC.

2847 East Jones Avenue  
Phoenix, AZ 85040  
(602) 305-6800

10103 Harmon Rd.  
Fort Worth, TX 76177  
(817) 232-2300

CONCRETE PLACING SYSTEMS



AIR COMPRESSORS



SALES, PARTS & SERVICE

**WWW.COMFLEETSERV.COM**



Item #: 031HB20GH

Hose End, 2" VIC



## COMMERCIAL FLEET SERVICE, INC.

2847 East Jones Avenue  
Phoenix, AZ 85040  
(602) 305-6800

10103 Harmon Rd.  
Fort Worth, TX 76177  
(817) 232-2300

CONCRETE PLACING SYSTEMS



AIR COMPRESSORS



SALES, PARTS & SERVICE

**WWW.COMFLEETSERV.COM**



Item #: 018CP14S

Clamp, 5/8" x 3-1/2" Center Punch Clamp



## COMMERCIAL FLEET SERVICE, INC.

2847 East Jones Avenue  
Phoenix, AZ 85040  
(602) 305-6800

10103 Harmon Rd.  
Fort Worth, TX 76177  
(817) 232-2300

CONCRETE PLACING SYSTEMS

•

AIR COMPRESSORS

•

SALES, PARTS & SERVICE

**WWW.COMFLEETSERV.COM**



Clean Out Ball

039CB15, 1-1/2" Hose

039CB2, 2" Hose

039CB3, 2-1/2" and 3" Hoses

039CB4, 4" Hose

039CB5M, 5" Hose (Medium)





## COMMERCIAL FLEET SERVICE, INC.

2847 East Jones Avenue  
Phoenix, AZ 85040  
(602) 305-6800

10103 Harmon Rd.  
Fort Worth, TX 76177  
(817) 232-2300

CONCRETE PLACING SYSTEMS

•

AIR COMPRESSORS

•

SALES, PARTS & SERVICE

**WWW.COMFLEETSERV.COM**



Reducer, Heavy Duty

031R302036D, 3" x 2" x 36" Heavy Duty

031R302028D, 3" x 2" x 28" Heavy Duty



## COMMERCIAL FLEET SERVICE, INC.

2847 East Jones Avenue  
Phoenix, AZ 85040  
(602) 305-6800

10103 Harmon Rd.  
Fort Worth, TX 76177  
(817) 232-2300

CONCRETE PLACING SYSTEMS

•

AIR COMPRESSORS

•

SALES, PARTS & SERVICE

**WWW.COMFLEETSERV.COM**



Reducer, Heavy Duty w/ Handle

008R035R30R20H, 3" x 2" x 35" w/ Handle

008R302028RR, 3" x 2" x 28" w/ Handle





## COMMERCIAL FLEET SERVICE, INC.

2847 East Jones Avenue  
Phoenix, AZ 85040  
(602) 305-6800

10103 Harmon Rd.  
Fort Worth, TX 76177  
(817) 232-2300

CONCRETE PLACING SYSTEMS

• AIR COMPRESSORS

• SALES, PARTS & SERVICE

**WWW.COMFLEETSERV.COM**



### Reducing Elbow

031RE4030D, Elbow, 90 Degree Reducing, 4" x 3" HD

031RE5030D, Elbow, 90 Degree Reducing, 5" x 3" HD

031RE5040D, Elbow, 90 Degree Reducing, 5" x 4" HD





## COMMERCIAL FLEET SERVICE, INC.

2847 East Jones Avenue  
Phoenix, AZ 85040  
(602) 305-6800

10103 Harmon Rd.  
Fort Worth, TX 76177  
(817) 232-2300

CONCRETE PLACING SYSTEMS

•

AIR COMPRESSORS

•

SALES, PARTS & SERVICE

**WWW.COMFLEETSERV.COM**



Hose Crutch



## COMMERCIAL FLEET SERVICE, INC.

2847 East Jones Avenue  
Phoenix, AZ 85040  
(602) 305-6800

10103 Harmon Rd.  
Fort Worth, TX 76177  
(817) 232-2300

CONCRETE PLACING SYSTEMS

• AIR COMPRESSORS

• SALES, PARTS & SERVICE

**WWW.COMFLEETSERV.COM**



Item #: 012345

Hose, Air 3/4" x 50' w/ Air King Fittings





## COMMERCIAL FLEET SERVICE, INC.

2847 East Jones Avenue  
Phoenix, AZ 85040  
(602) 305-6800

10103 Harmon Rd.  
Fort Worth, TX 76177  
(817) 232-2300

CONCRETE PLACING SYSTEMS

AIR COMPRESSORS

SALES, PARTS & SERVICE

**WWW.COMFLEETSERV.COM**



Item #: 12397134

Additive, Slick-Pak

### Application:

When used as a pump primer. Slick-Pak eliminates the need for premium priced grout slurries or bagged cement primers. As a pumping aid, Slick-Pak enables the pumping of harsh, lean or over-watered mixes, reduces line pressure and increases the range of pumpability. Slick-Pak is compatible with all conventional concrete materials and contains no calcium chloride.





## COMMERCIAL FLEET SERVICE, INC.

2847 East Jones Avenue  
Phoenix, AZ 85040  
(602) 305-6800

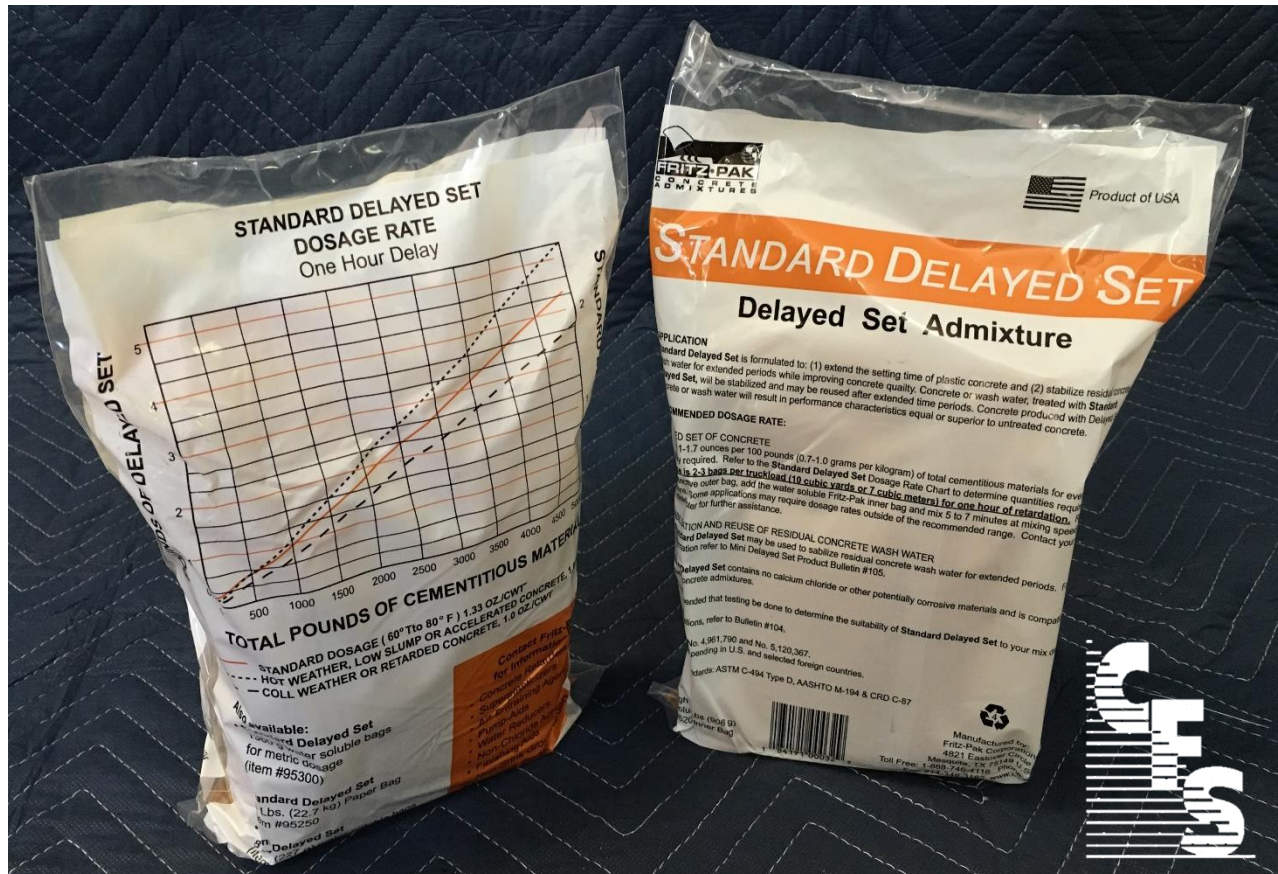
10103 Harmon Rd.  
Fort Worth, TX 76177  
(817) 232-2300

CONCRETE PLACING SYSTEMS

AIR COMPRESSORS

SALES, PARTS & SERVICE

**WWW.COMFLEETSERV.COM**



Item #: 12395200

### Additive, Standard Delayed Set

#### Application:

- (1) Extend the setting time of plastic concrete and (2) stabilize residual concrete wash water for extended periods while improving concrete quality. Concrete or wash water, treated with Standard Delayed Set, will be stabilized and may be reused after extended time periods. Concrete produced with Delayed Set concrete or wash water will result in performance characteristics equal or superior to treated concrete.



## COMMERCIAL FLEET SERVICE, INC.

2847 East Jones Avenue  
Phoenix, AZ 85040  
(602) 305-6800

10103 Harmon Rd.  
Fort Worth, TX 76177  
(817) 232-2300

CONCRETE PLACING SYSTEMS

AIR COMPRESSORS

SALES, PARTS & SERVICE

**WWW.COMFLEETSERV.COM**



Item #: 12398455

### Additive, Plaster Fast-Set

#### Application:

Plaster Fast-Set is designed to speed up the set of plaster. Because it contains no chlorides, it will not affect color, promote efflorescence or weaken the plaster. It speeds up the set evenly, and also makes the plaster easier to trowel and finish. Depending on temperature, it will speed up the set by up to 3 hours. Contains no chlorides, nitrites, nitrates or clay.





## COMMERCIAL FLEET SERVICE, INC.

2847 East Jones Avenue  
Phoenix, AZ 85040  
(602) 305-6800

10103 Harmon Rd.  
Fort Worth, TX 76177  
(817) 232-2300

CONCRETE PLACING SYSTEMS

•

AIR COMPRESSORS

•

SALES, PARTS & SERVICE

**WWW.COMFLEETSERV.COM**



Item #: 12397140

Additive, Supercizer 7

### Application:

When used as a high-range water reducer, Supercizer 7 will reduce water requirements up to 40% and increase concrete compressive strengths at all ages, reduces permeability and increase durability. Supercizer 7 is recommended for all types of concrete where improved concrete performance with a lower water:cement ratio, ultra-high early strengths and improved slump characteristics are desired.





## COMMERCIAL FLEET SERVICE, INC.

2847 East Jones Avenue  
Phoenix, AZ 85040  
(602) 305-6800

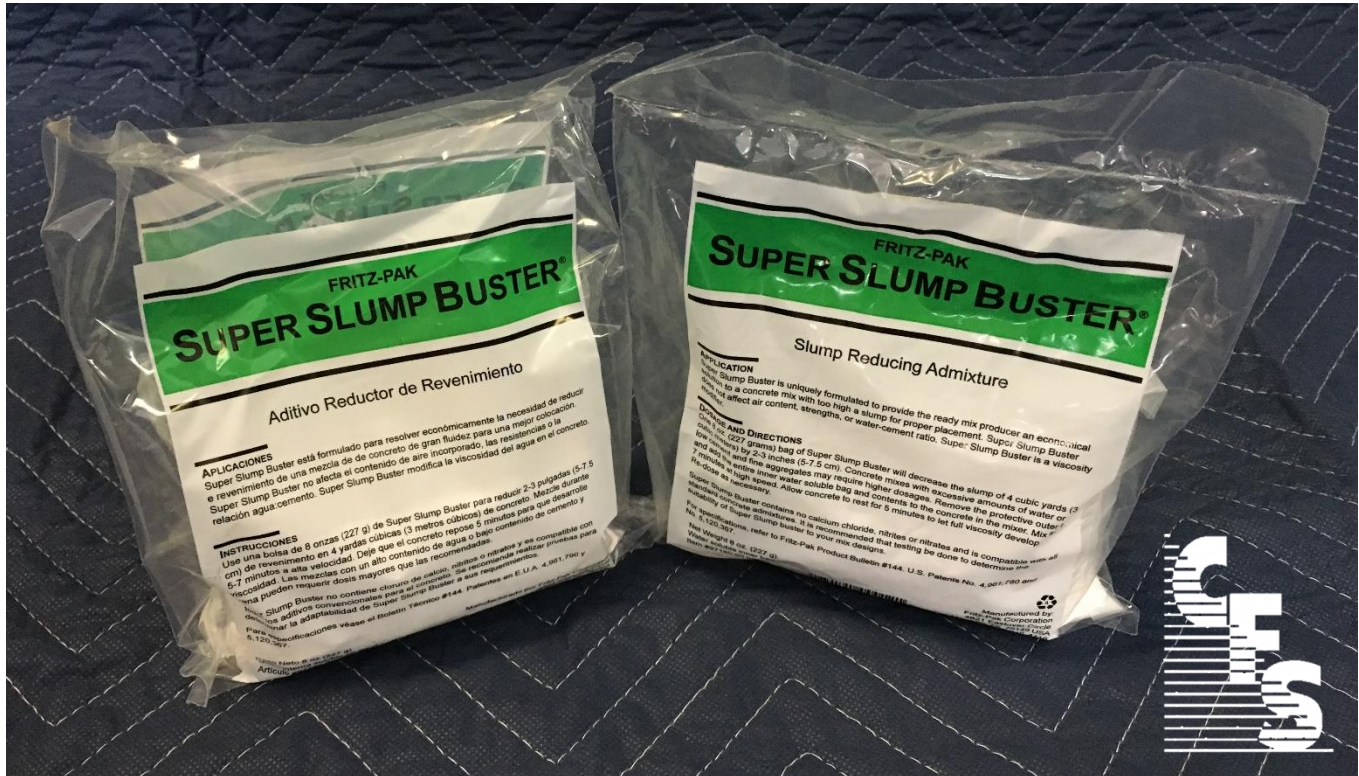
10103 Harmon Rd.  
Fort Worth, TX 76177  
(817) 232-2300

CONCRETE PLACING SYSTEMS

AIR COMPRESSORS

SALES, PARTS & SERVICE

**WWW.COMFLEETSERV.COM**



Item #: 12397180

### Additive, Super Slump Buster

#### Application:

Super Slump Buster is uniquely formulated to provide the ready mix producer an economical solution to a concrete mix with too high a slump for proper placement. Super Slump Buster does not affect air content, strengths, or water-cement ratio. Super Slump Buster is a viscosity modifier.



## COMMERCIAL FLEET SERVICE, INC.

2847 East Jones Avenue  
Phoenix, AZ 85040  
(602) 305-6800

10103 Harmon Rd.  
Fort Worth, TX 76177  
(817) 232-2300

CONCRETE PLACING SYSTEMS

AIR COMPRESSORS

SALES, PARTS & SERVICE

**WWW.COMFLEETSERV.COM**



Item #: 12397000

### Additive, Control Finish

#### Application:

Improves finishing characteristics without adding water for re-tempering. Control Finish “brings up the butter” to help finishing of concrete and produces a high quality, durable surface. It eliminates or greatly reduces surface problems associated with too much water: plastic shrinkage cracks, dusting, crazing and crusting. Control Finish may be used any time to aid in finishing concrete. It is of particular value on windy days, regardless of temperature and on hot or dry days, because it greatly reduces the amount of re-tempering with water needed.





## COMMERCIAL FLEET SERVICE, INC.

2847 East Jones Avenue  
Phoenix, AZ 85040  
(602) 305-6800

10103 Harmon Rd.  
Fort Worth, TX 76177  
(817) 232-2300

CONCRETE PLACING SYSTEMS

• AIR COMPRESSORS

• SALES, PARTS & SERVICE

**WWW.COMFLEETSERV.COM**



Item #: 12397081

Additive, NS-7

### Application:

NS-7 is a ready-to-use dry powdered admixture for portland cement grouts. NS-7 is formulated to produce a more uniform and workable non-shrink grout with less water, improved flowability and extended set times. As a non-shrink additive, NS-7 will allow slow, controlled, in-place expansion prior to hardening. As a grout fluidifier, NS-7 will greatly enhance flowability allowing ease of placement with extended handling and set times. NS-7 also significantly reduces water requirements, 10 to 20 percent, yielding increased compressive and flexural strengths.





## COMMERCIAL FLEET SERVICE, INC.

2847 East Jones Avenue  
Phoenix, AZ 85040  
(602) 305-6800

10103 Harmon Rd.  
Fort Worth, TX 76177  
(817) 232-2300

CONCRETE PLACING SYSTEMS

AIR COMPRESSORS

SALES, PARTS & SERVICE

**WWW.COMFLEETSERV.COM**



Item #: 12395664

Additive, Super Air Plus

### Application:

Recommended for all types of air entrained concrete where an increase in entrained air content is required in order to meet job site specifications.



## COMMERCIAL FLEET SERVICE, INC.

2847 East Jones Avenue  
Phoenix, AZ 85040  
(602) 305-6800

10103 Harmon Rd.  
Fort Worth, TX 76177  
(817) 232-2300

CONCRETE PLACING SYSTEMS

•

AIR COMPRESSORS

•

SALES, PARTS & SERVICE

**WWW.COMFLEETSERV.COM**



Shooting Wire

WIRE, 0.035 50lb Coil

WIRE42, 0.042 50lb Coil





## COMMERCIAL FLEET SERVICE, INC.

2847 East Jones Avenue  
Phoenix, AZ 85040  
(602) 305-6800

10103 Harmon Rd.  
Fort Worth, TX 76177  
(817) 232-2300

CONCRETE PLACING SYSTEMS

•

AIR COMPRESSORS

•

SALES, PARTS & SERVICE

**WWW.COMFLEETSERV.COM**



Water Level Hose



## COMMERCIAL FLEET SERVICE, INC.

2847 East Jones Avenue  
Phoenix, AZ 85040  
(602) 305-6800

10103 Harmon Rd.  
Fort Worth, TX 76177  
(817) 232-2300

CONCRETE PLACING SYSTEMS

•

AIR COMPRESSORS

•

SALES, PARTS & SERVICE

**WWW.COMFLEETSERV.COM**



### Whip Check

096WA2, 1-1/2" x 3" ID Hose to Hose

096WB1, 1/2" x 1-1/4" Hose to Hose





## COMMERCIAL FLEET SERVICE, INC.

2847 East Jones Avenue  
Phoenix, AZ 85040  
(602) 305-6800

10103 Harmon Rd.  
Fort Worth, TX 76177  
(817) 232-2300

CONCRETE PLACING SYSTEMS

•

AIR COMPRESSORS

•

SALES, PARTS & SERVICE

**[WWW.COMFLEETSERV.COM](http://WWW.COMFLEETSERV.COM)**



Item #: 031SL5000

Safety Sling



## COMMERCIAL FLEET SERVICE, INC.

2847 East Jones Avenue  
Phoenix, AZ 85040  
(602) 305-6800

10103 Harmon Rd.  
Fort Worth, TX 76177  
(817) 232-2300

CONCRETE PLACING SYSTEMS

•

AIR COMPRESSORS

•

SALES, PARTS & SERVICE

**WWW.COMFLEETSERV.COM**



Item #: 07114739

Rebar Bender





## COMMERCIAL FLEET SERVICE, INC.

2847 East Jones Avenue  
Phoenix, AZ 85040  
(602) 305-6800

10103 Harmon Rd.  
Fort Worth, TX 76177  
(817) 232-2300

CONCRETE PLACING SYSTEMS

•

AIR COMPRESSORS

•

SALES, PARTS & SERVICE

**WWW.COMFLEETSERV.COM**



Jiffy Jack



## COMMERCIAL FLEET SERVICE, INC.

2847 East Jones Avenue  
Phoenix, AZ 85040  
(602) 305-6800

10103 Harmon Rd.  
Fort Worth, TX 76177  
(817) 232-2300

CONCRETE PLACING SYSTEMS

•

AIR COMPRESSORS

•

SALES, PARTS & SERVICE

**WWW.COMFLEETSERV.COM**



Item #: 016AL800B

Alphalock